



Birmingham
City Council

Working with the PREVENT Duty

Overview and Scrutiny Committee,
March 21, 2018

Background and working together

Effective cross-council and interagency partnership

- With Counter Terrorism Unit colleagues
- Working within the safeguarding agenda

Prevent is one component of the UK Counter Terrorism Strategy known as CONTEST which is organised around four work-streams, each comprising a number of key objectives

Pursue: to stop terrorist attacks;

Prevent: to stop people becoming terrorists or supporting terrorism;

Protect: to strengthen our protection against a terrorist attack; and

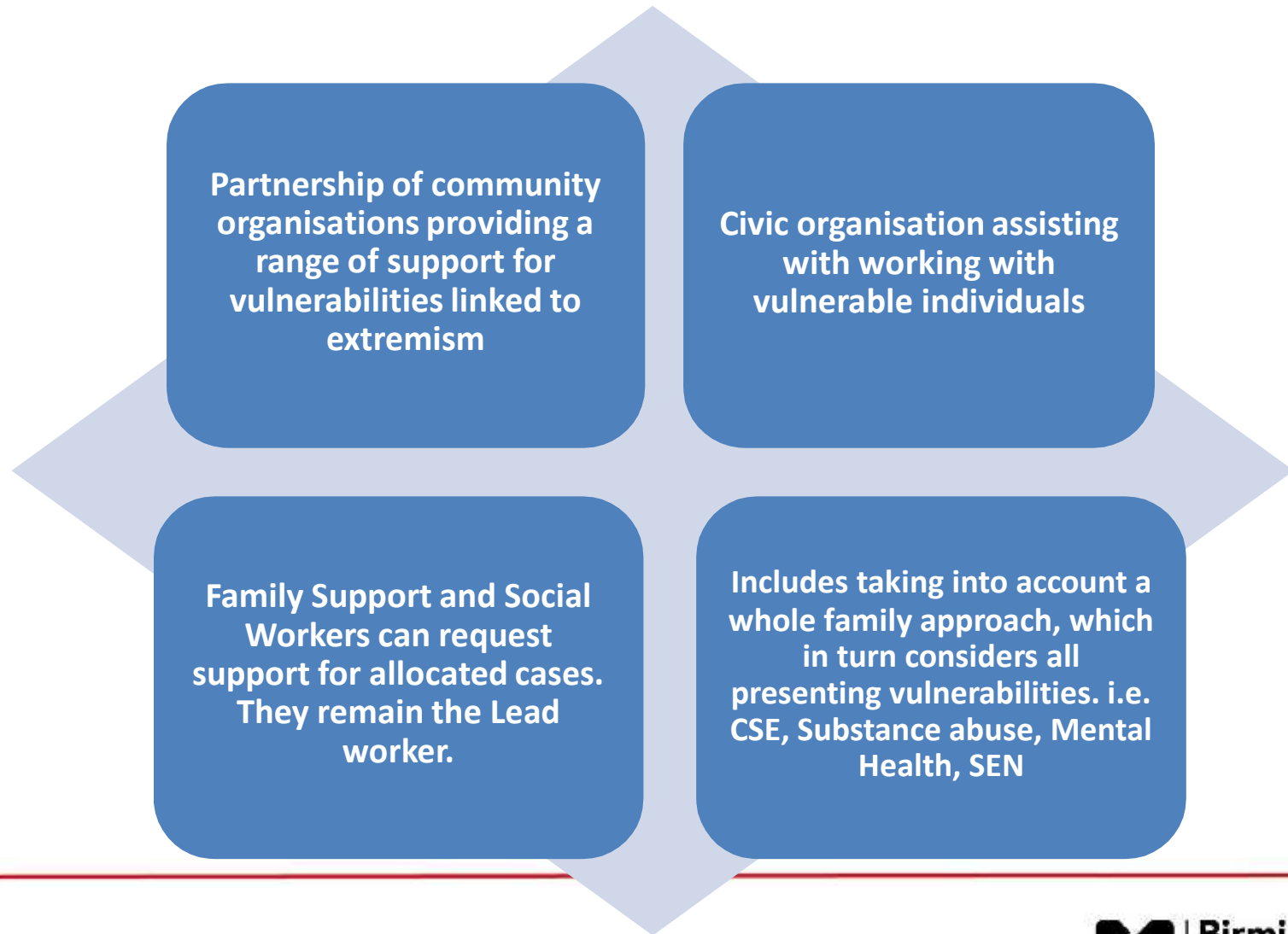
Prepare: to mitigate the impact of a terrorist attack.

- PREVENT Duty – July 1, 2015
 - Social workers, teachers, nurses...’to proactively help reduce vulnerability to radicalisation or terrorism ‘

Progress in education

- 100% of schools undertaken Prevent training
- 680 Home Office Accredited Prevent trainers in schools
- 220 schools engaged with UNICEF Rights Respecting School Award
- Additional schools officer in post and developing the offer to schools
- Recent Home Office Peer Review deemed BCC as at the vanguard of education practice nationally
- Developing international partnership with Indonesia, 'Unity in Diversity' with the support of the Foreign Office and the UK Ambassador to Indonesia.

Helping Families Early



CSC Prevent Guidance published Jan 2017 providing:

- Clear Pathway for CSC referrals
- Screening tool for referrers to complete with Request for Support aim to clearly articulate the concerns and intelligence
- Assessment guidance for social workers and family support to enable them to explore and articulate the full range of concerns which may be linked to extremism
- Clear communication and joint working with Prevent

Practice guidance in place

We are seeing more detailed and comprehensive assessments

This guidance document contains a screening tool and assessment questions to assist with exploring extremism concerns

The Extremism guidance is to provide children's practitioners with an explorative set of questions to assess the nature of extremism concerns being presented by a child or young person (CYP) and their family.

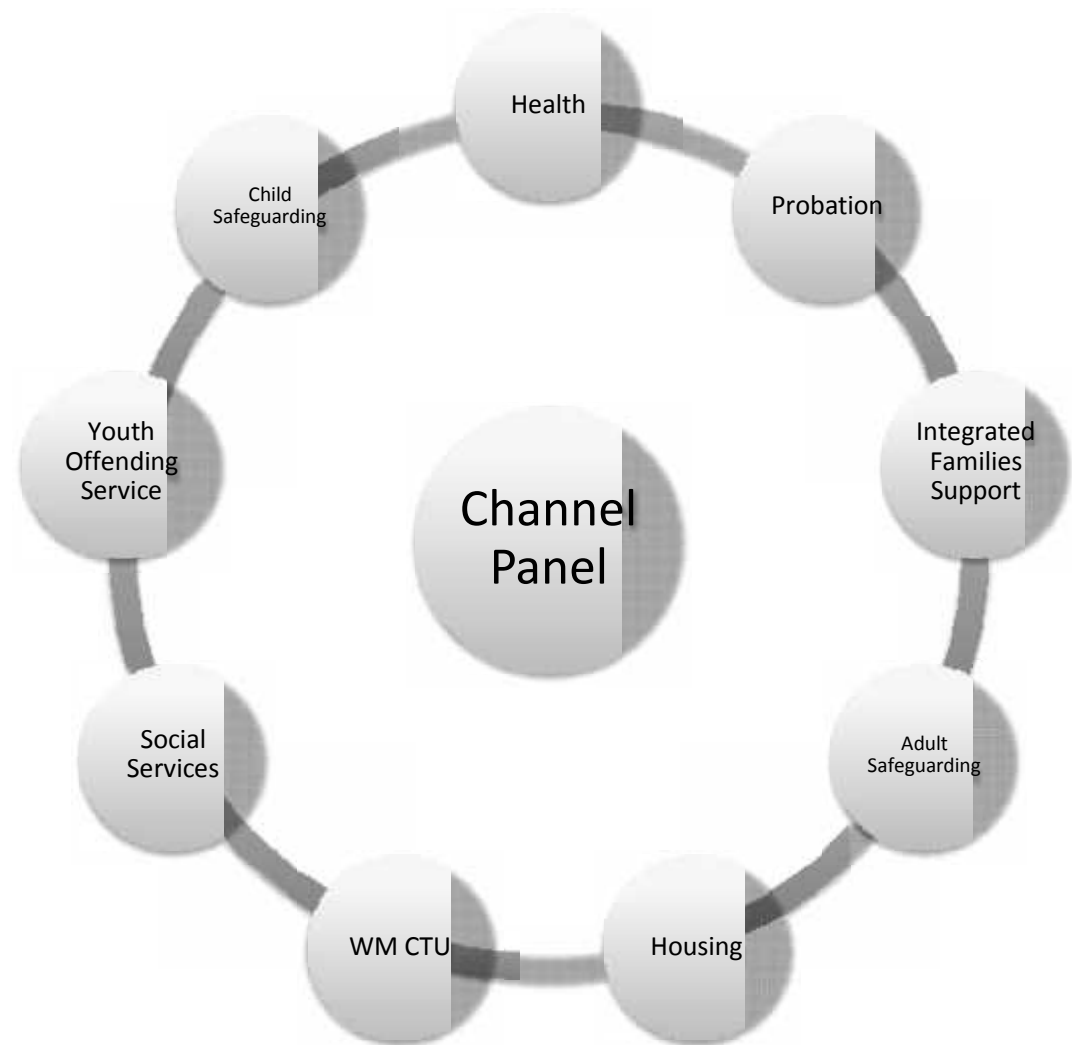
CHANNEL

Channel is a multi-agency approach
To identify & provide support to individuals
who are at risk of being drawn into
terrorist-related activity.

Provides a mechanism for safeguarding
vulnerable individuals

Assesses the nature & extent of the
potential risk they face before they
become involved in criminal activity

Where necessary, provide a support
package, tailored to an individuals needs.



KIKIT Case Study

Home Office Prevent Peer Review – February 2018

Key Findings :

Extremely strong approach to Prevent, internationally recognised

Deep understanding across the partnership at all levels

Highly skilled professionals demonstrating genuine leadership

Innovative practice to minimise threat and strengthen community resilience

Strong commissioned projects delivering good outcomes

At the vanguard of education practice in this area

Prevent needs to feature more prominently in the work of statutory safeguarding boards

Questions