

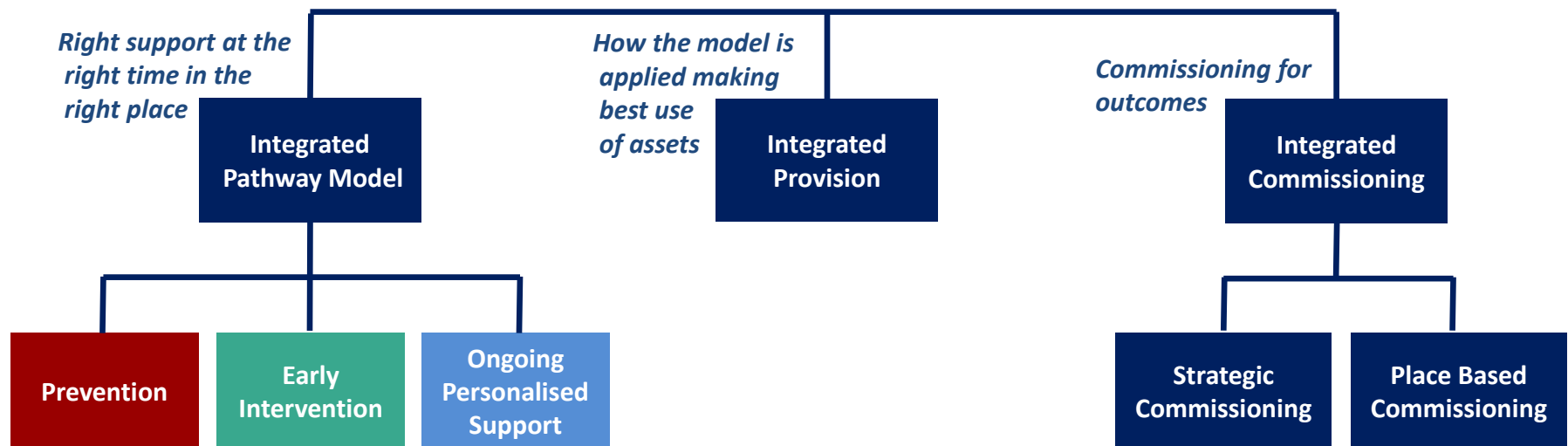
Appendix III



Draft Proposed Governance

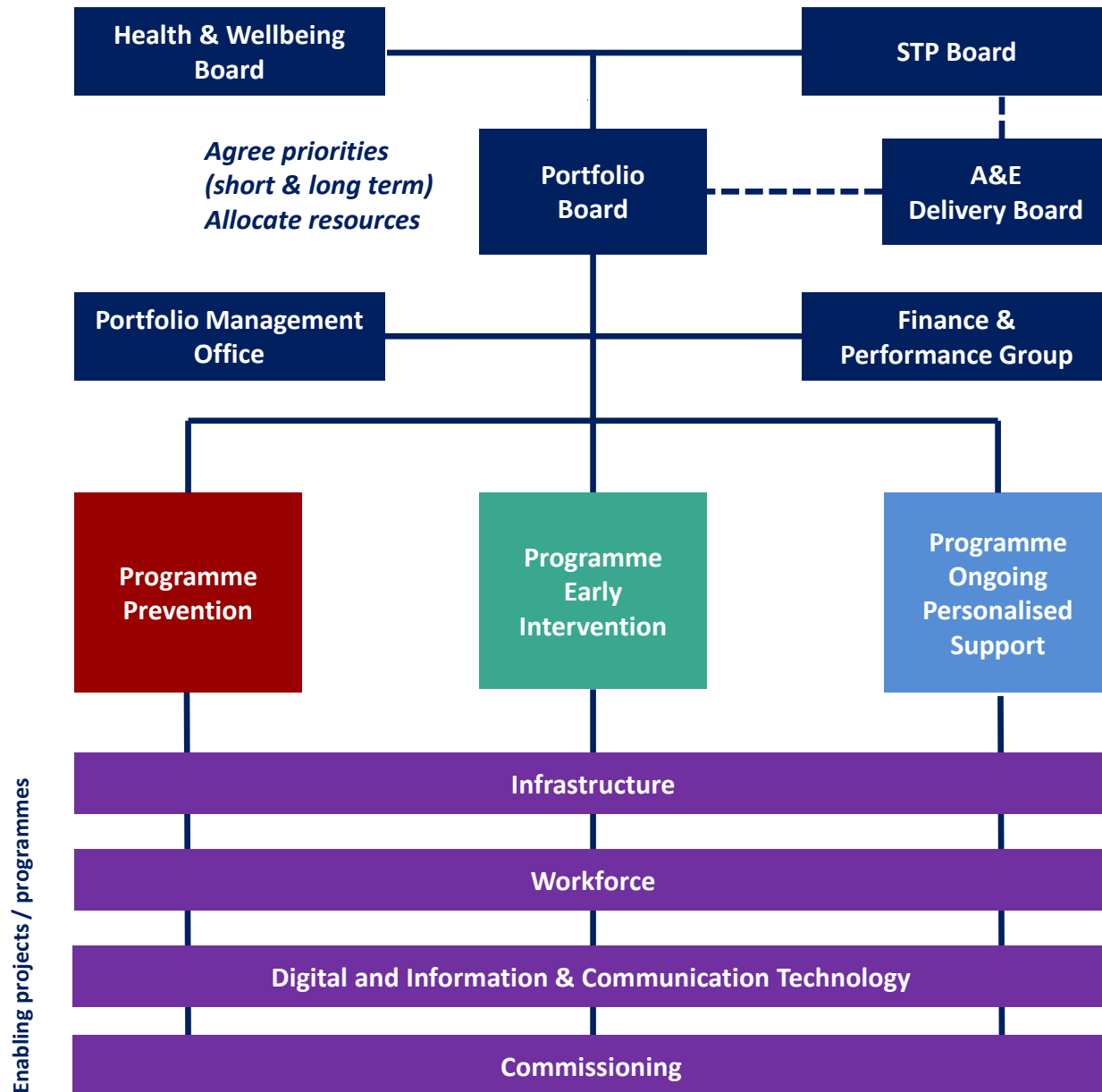
– A single bounded change programme

Components of Integration



Appropriate focus must be given to each component of integration

Portfolio Governance – Integrated Health and Social Care



Potential Projects

Programme
Prevention



Potential Projects

- **Project**

Programme
Early Intervention



Potential Projects

- **Project**

Programme
Ongoing Personalised Support



Potential Projects

- **Project**

Agreeing the Locality Model will allow us to
populate the projects under each programme

Interdependencies



Potential Enabling Programmes / Projects

Infrastructure

- **Project**

Workforce

- **Project**

Digital and Information & Communication Technology

- **Project**

Commissioning

- **Project**

Co-production

