

Birmingham Local Outbreak Engagement Board Covid-19 Overview

Birmingham Public Health Division
29/06/2021



Making a positive difference every day to people's lives

Overview



Making a positive difference every day to people's lives



Covid-19 in Birmingham: Current situation and 60-day trend

Total deaths
(Data up to 28 Jun)

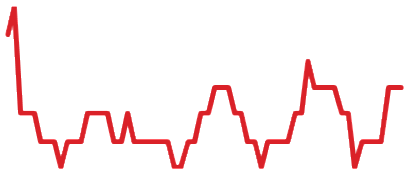
2,697

Latest daily figure

0

new deaths

60-day trend
(based on seven-day averages).



Source: coronavirus.data.gov.uk

Total cases
(Data up to 28 Jun)

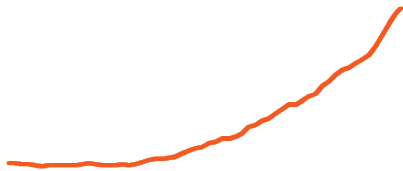
108,275

Latest daily figure

381

new cases

60-day trend
(based on seven-day averages).



Source: coronavirus.data.gov.uk

Hospital admissions
(Data up to 28 Jun)

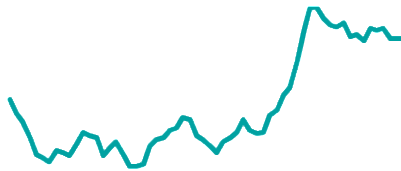
18,719

Latest daily figure

18

new admissions

60-day trend
(based on seven-day averages).



Source: NHS COVID-19 Situation
Operational Dashboard

Over 60's cases
(Data up to 26 Jun)

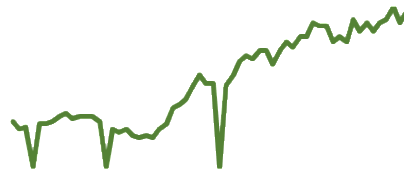
15,710

Latest daily figure

9




60+ new cases

60-day trend
(based on seven-day averages).



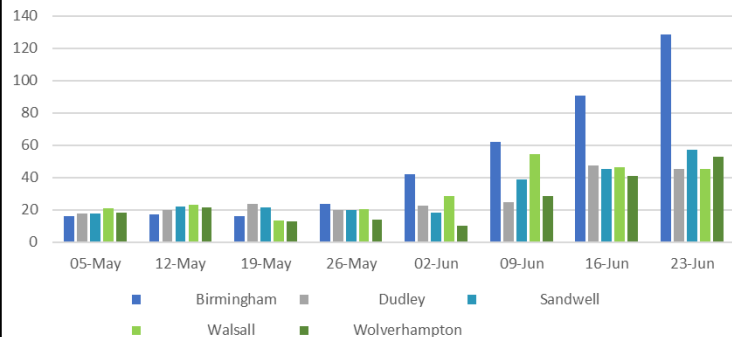
Source: PHE

Testing & Cases Summary: 7 Days up to 27th June 2021

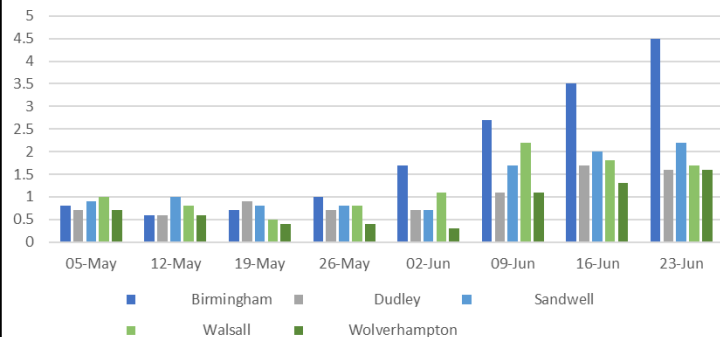
- 7 Day Rolling Case Rate to 26th June (Pillar 1 & 2) 199.2/100K 
 - Rate on 19th June 133.3/100K
 - Ranked 2nd highest in the West Midlands region, with Solihull ranked 1st (213.0/100K)
- 7 Day Pillar 2 PCR testing rate at 27th June 1,993/100K 
 - Rate of testing on 20th June 2,004/100K
 - Ranked 12th highest in the region
- 7 Day lateral flow testing rate at 27th June 5,647/100K
 - Ranked 13th highest in the region
- % of Pillar 2 positive PCR tests at 27th June 10.0% 
 - Rate on 20th June 6.3%
- % of positive lateral flow tests at 27th June 1.2%

Birmingham & the Black Country Direction of Travel

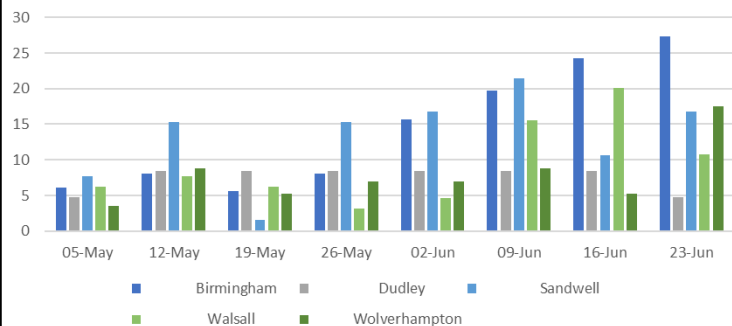
Birmingham and Black Country case rate - all ages



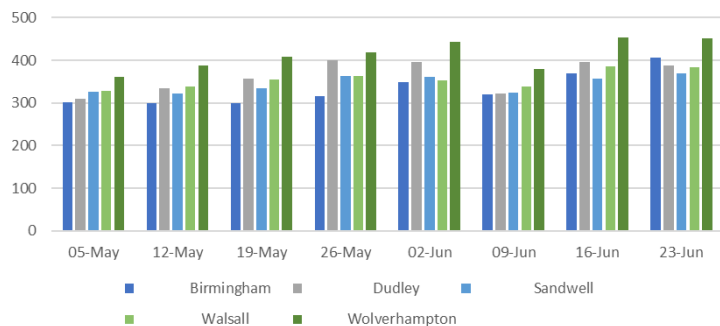
Birmingham and Black Country positivity



Birmingham and Black Country 60+ case rates

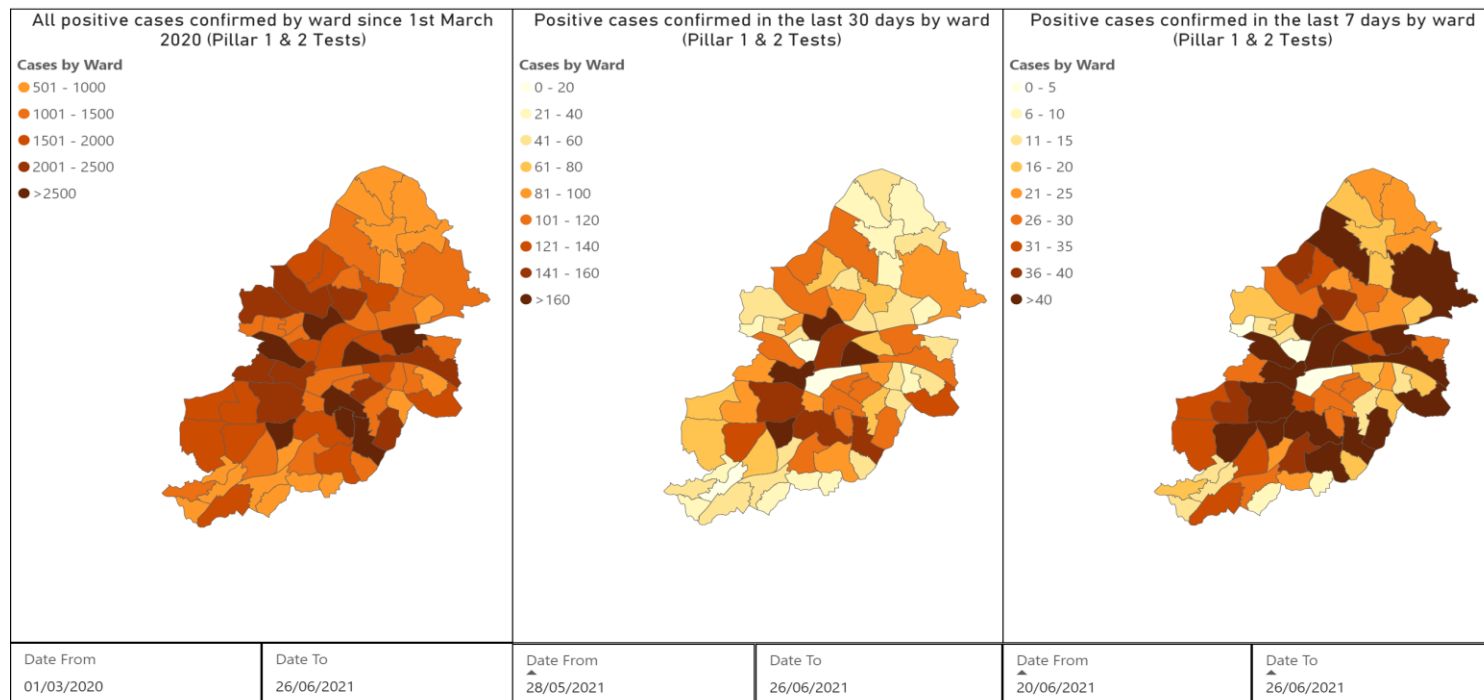


Birmingham & Black Country testing rates



Cases by Ward: Total, Last Month & Last Week

Confirmed Cases by Ward for Pillar 1 & 2 Tests



Total

Last Month

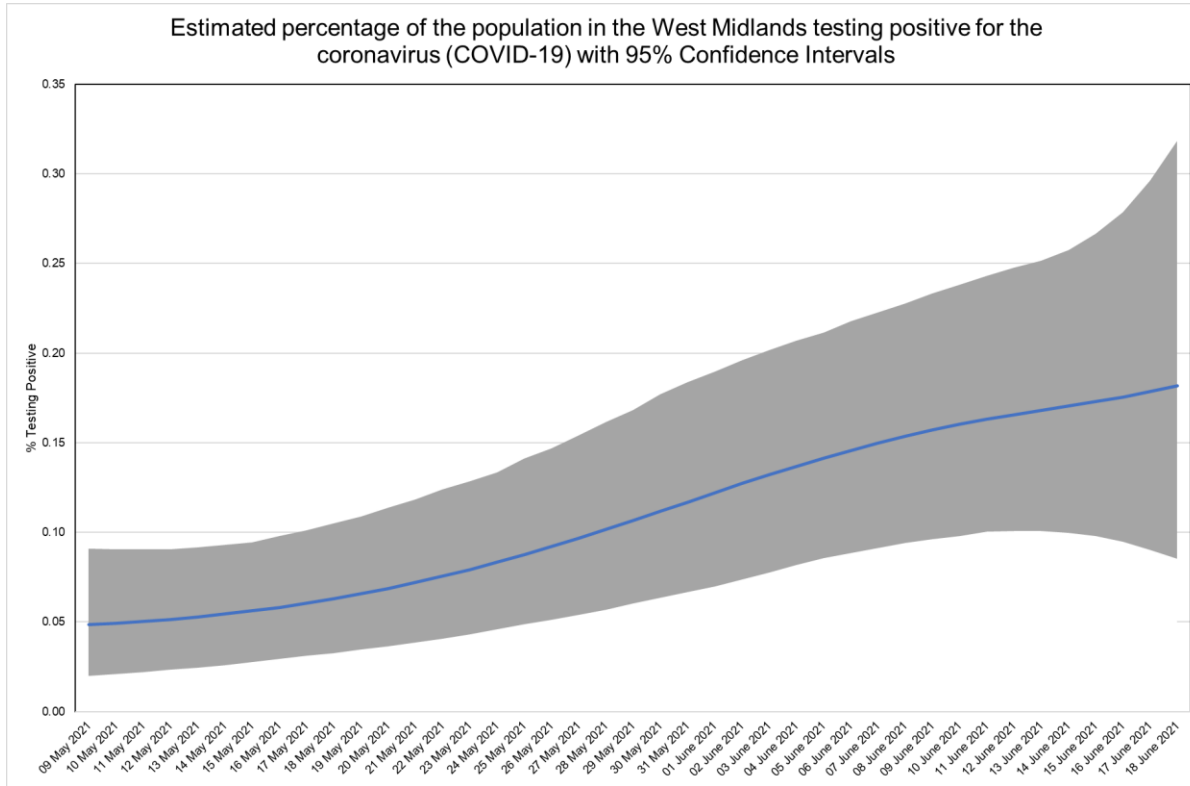
Last Week

Top Ten Case Rates by Ward

Ward	Prior week (2021-06-10 to 2021-06-16)		Most recent week (2021-06-17 to 2021-06-23)		Change between last two weeks		
	Cases	Rate	Cases	Rate	%	Absolute difference *	
Bournbrook & Selly Park	143	565.2	193	762.8	34	197.6	↑
Edgbaston	38	173.5	69	315.1	81	141.6	↑
Nechells	27	164.1	49	297.8	81	133.7	↑
Birchfield	36	288.4	33	264.4	-8	-24.0	→
Weoley & Selly Oak	26	107.2	61	251.5	134	144.3	↑
Sutton Wylde Green	7	79.4	22	249.4	214	170.0	↑
Aston	35	146.2	59	246.5	68	100.3	↑
Bordesley Green	30	233.9	27	210.5	-10	-23.4	→
Sheldon	26	131.1	39	196.6	49	65.5	→
Pype Hayes	8	74.3	21	195.1	162	120.8	↑

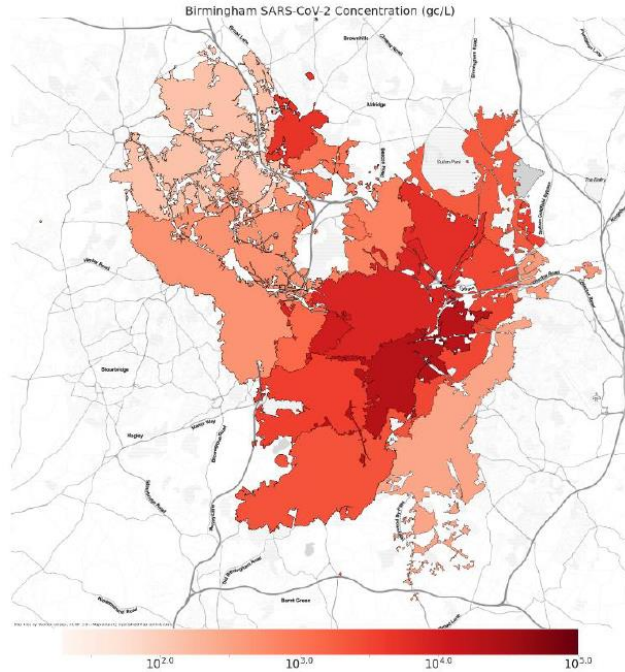
23 wards saw significant increase in case rates between the most recent week and the prior week. No wards saw a significant decrease

ONS Coronavirus (COVID-19) Infection Survey, up to 19th June

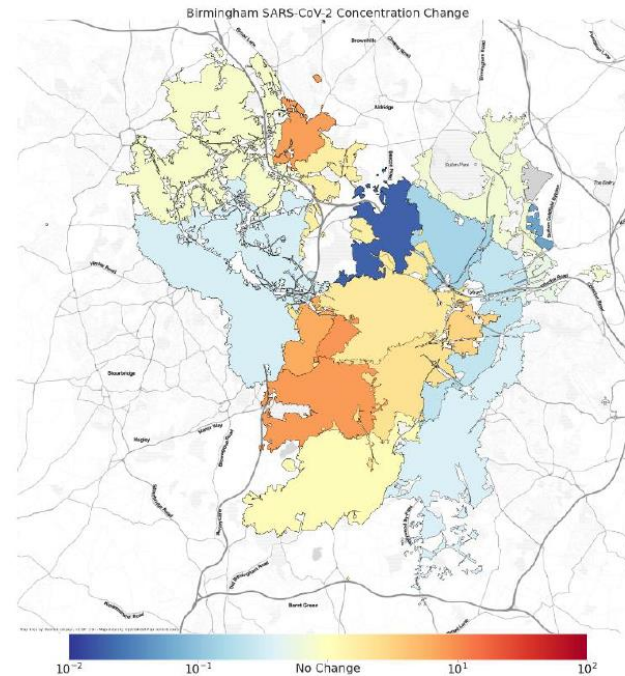


- The ONS infection survey estimates the % of the West Midlands population who were COVID positive on 19th June was 0.19%, which is down from a peak of over 2% in mid January, but is increasing.
- Following a decline in early May, the proportion testing positive has been increasing for the past month.
- The percentage of people testing positive increased in school Year 12 to age 24 years. Trends in the percentage testing positive is uncertain for all other age groups.
- ONS are not currently calculating sub regional estimates due to reduced estimate accuracy when prevalence is low.

NHS WASTEWATER SARS-COV-2 REPORT – Data to 25/06/21



SARS-CoV-2 RNA concentration in wastewater. Darker shading indicate areas with a higher viral concentration. Higher concentration is associated with increased prevalence.



Change in weekly average SARS-CoV-2 RNA concentration in wastewater (scale is to maximum increase/decrease within the city).

Variants of Concern



Making a **positive difference** every day to people's lives



Variants of Concern

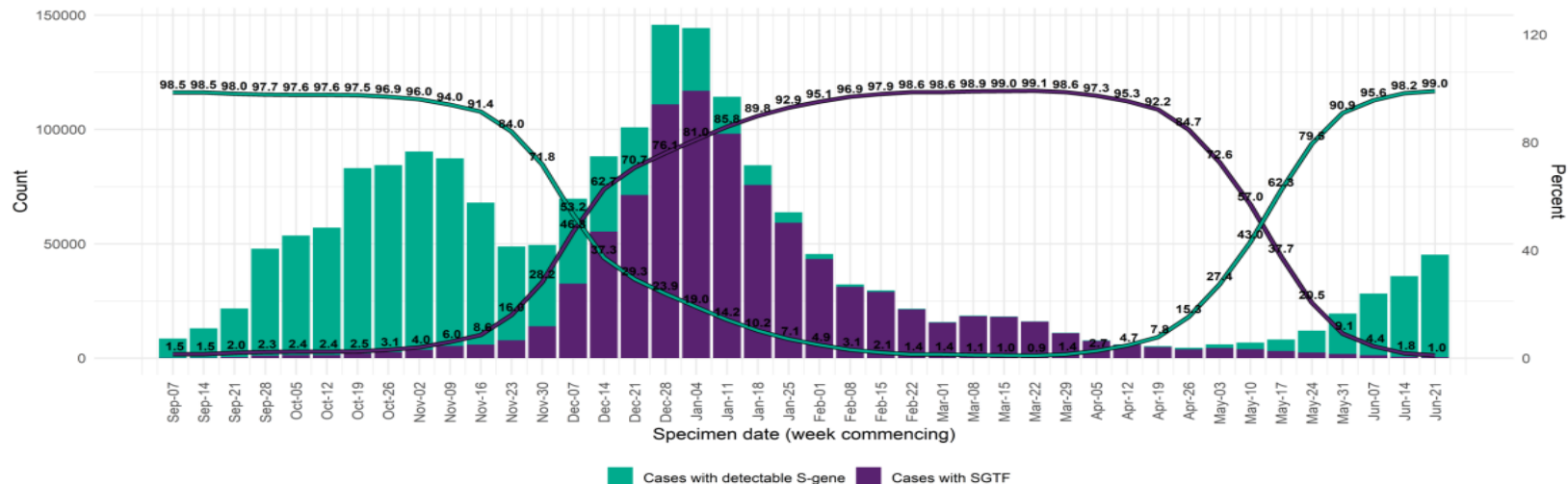
- Delta VOC - spreading rapidly across B'ham.
- Alpha VOC - previously dominant variant but now overtaken by Delta variant.
- Beta VOC -none currently in B'ham.

Current VOC Overview

- S Gene positive proxy for Delta VOC.
- 1,890 cases were tested for S-Gene in the 7 day period ending 28th June.
- 98.2% of these were S-gene positive.
- Cases are dispersed across B'ham city.
- Delta VOC dominant variant across West Midlands and England.

Delta Variant – National Picture

Weekly number and proportion of England Pillar 2 COVID-19 cases with detectable S gene or SGTF among those tested in TaqPath Labs

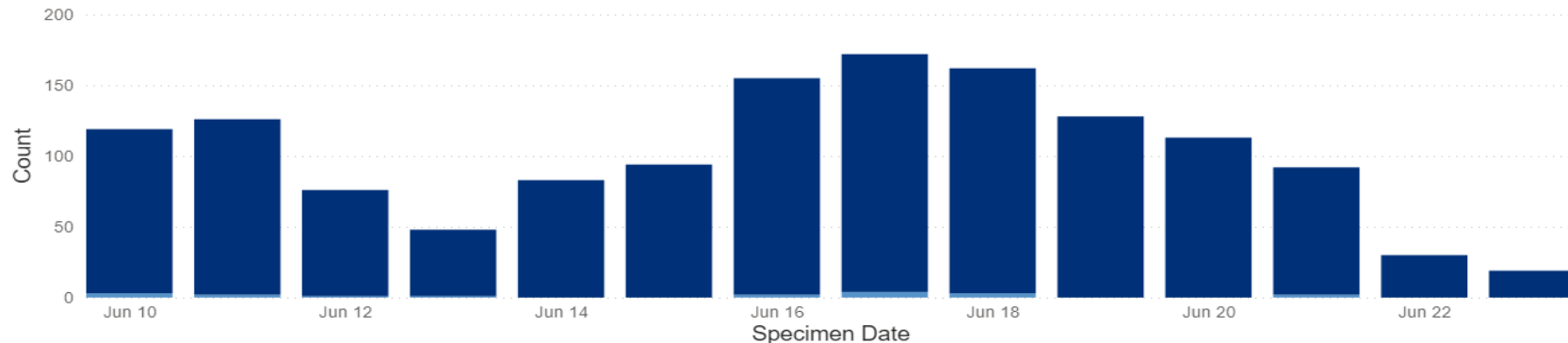


Increased proportion of cases tested in TaqPath labs show detectable S gene which indicates a potential Delta variant case. SGTF cases are a proxy measure for Alpha variant and are reducing. This suggests Delta variant has become the dominant variant in England.

Delta Variant - Birmingham

Count of Individuals by VAM (Variant and Mutation) Profile

VAM ● VOC-20DEC-01 ● VOC-21APR-02



- Of cases in Birmingham that were genetically sequenced in the last 2 weeks the majority were Delta variant (1,399 of 1,417)
- 18 were Alpha variant
- Only 6 VOC cases were related to travel suggesting spread is taking place in the community.
- There is a lag in data for cases sequenced in the most recent days.

COVID-19 Case Numbers by Variant 10th to 23rd June 2021

Legend

B.1.1.7 Alpha (Kent)

1

2

B.1.617.2 Delta (India)

1

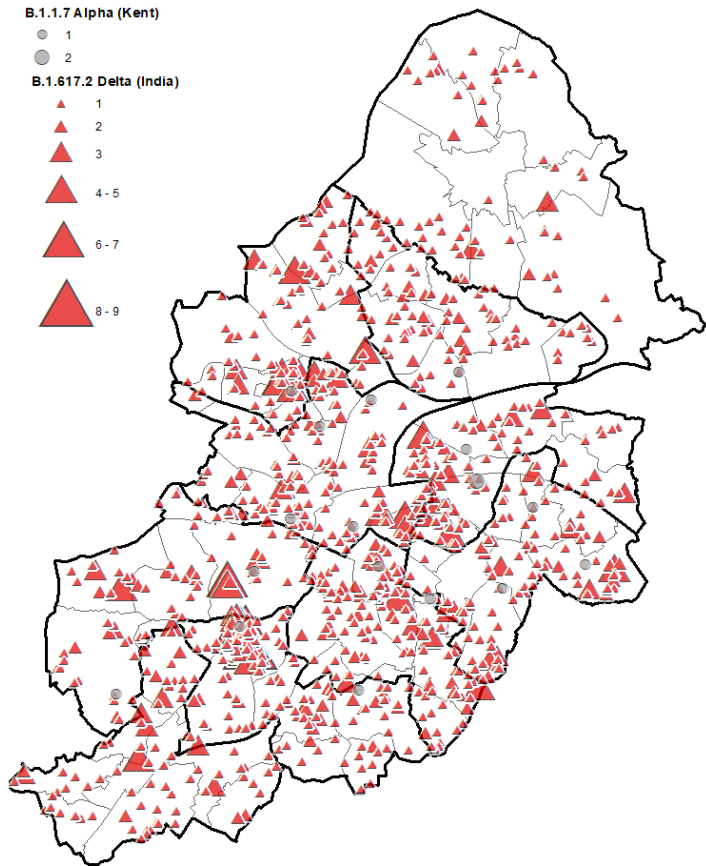
2

3

4 - 5

6 - 7

8 - 9



VOC distribution by Area

- Most cases are in West, Central and South East of the city.
- Delta variant now appears to be dominant in all areas of the city.
- Areas in the West of the city have low vaccine uptake and are therefore at a greater risk for cases resulting in severe illness.

Our Response

- Birmingham became an area of enhanced support w/c 14th June. The response focuses on increasing rates of testing, closing the gaps in vaccination and promoting compliance with guidelines.
- Across the city we have enhanced contact tracing and communication and engagement to increase vaccine and testing uptake alongside enforcement of current legislation.
- Specific actions are focused on 15 wards with high case rates and low vaccination uptake in over 50yrs. Actions include:
 - Pop-up vaccination clinics and walk-in clinics
 - Door to door lateral flow testing kit distribution to households and businesses
 - Focussed surge testing in response to linked clusters in workplaces and schools

Testing

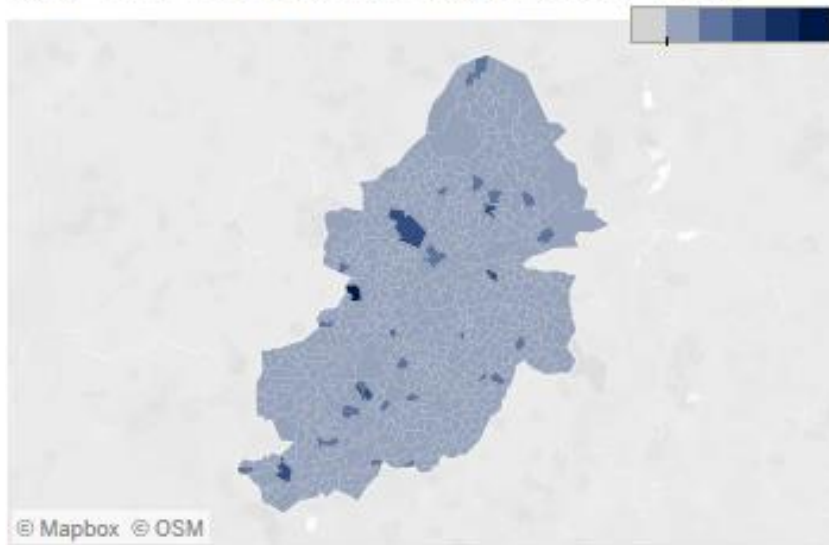


Making a positive difference every day to people's lives

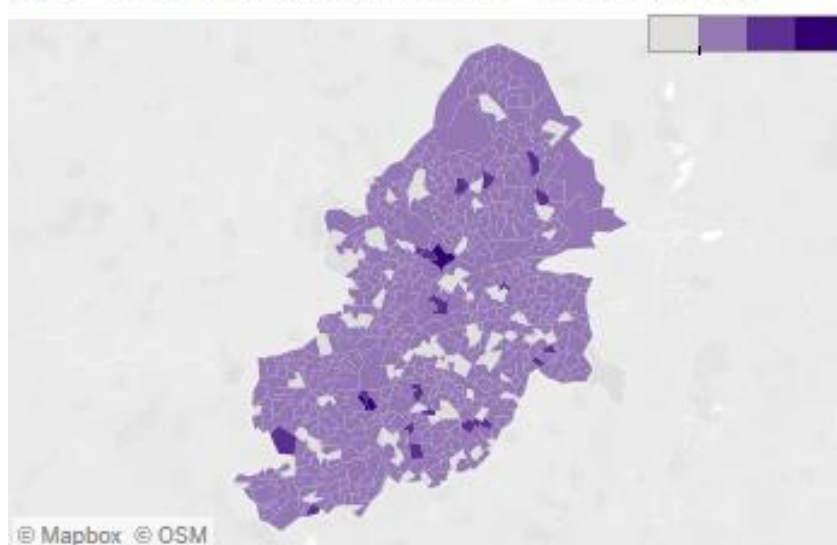


PCR Testing (Pillar 2) by LSOA: 7 Days up to 27th June 2021

7-day rate of total Pillar 2 tests LSOA
(per 100K population) Range 0.5K to 16.5K



7-day rate of positive Pillar 2 tests LSOA
(per 100K population) Range 0.0 to 1,731.6

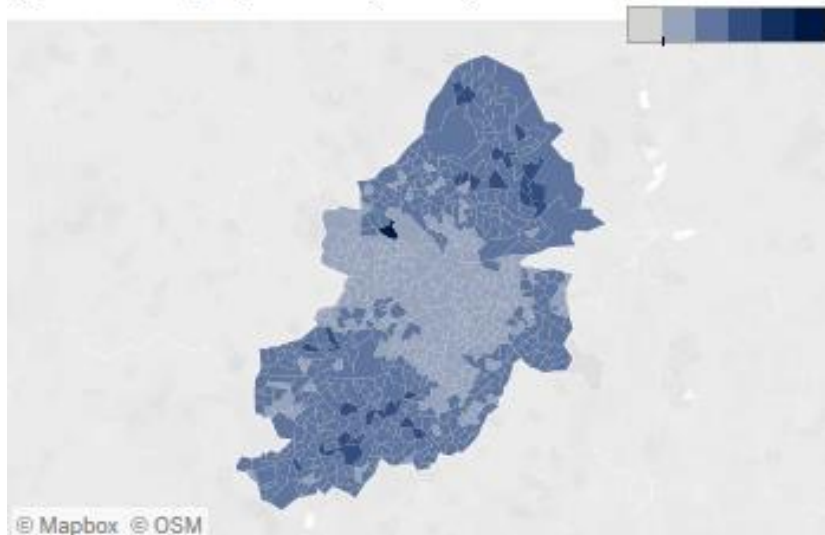


Lateral Flow Test Locations

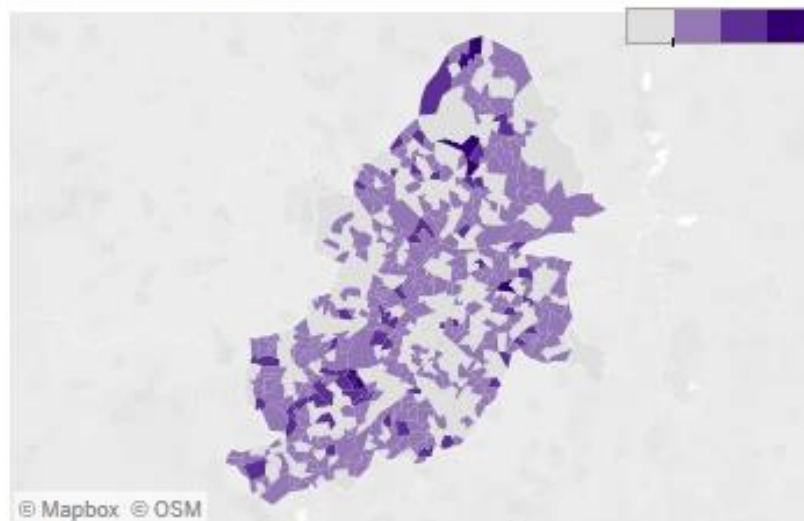
- **Lateral flow testing and collection sites have now closed.**
 - in line with the national move to home testing.
 - home testing kits can be ordered from gov's website,
 - <https://www.gov.uk/order-coronavirus-rapid-lateral-flow-tests>
- **Testing available at a network of community pharmacies**
 - 104 pharmacy community testing sites currently live.
- **Pop up collection sites - continue to operate**
- **Lateral Flow Device (LFD) Inclusion Pilot:**
 - engaged with homeless organisations to enable homeless citizens to collect and undertake regular LFD tests.

Lateral Flow Testing (Pillar 2) by LSOA: 7 Days up to 27th June 2021

7-day rate of total Pillar 2 tests LSOA
(per 100K population) Range 1.0K to 25.0K

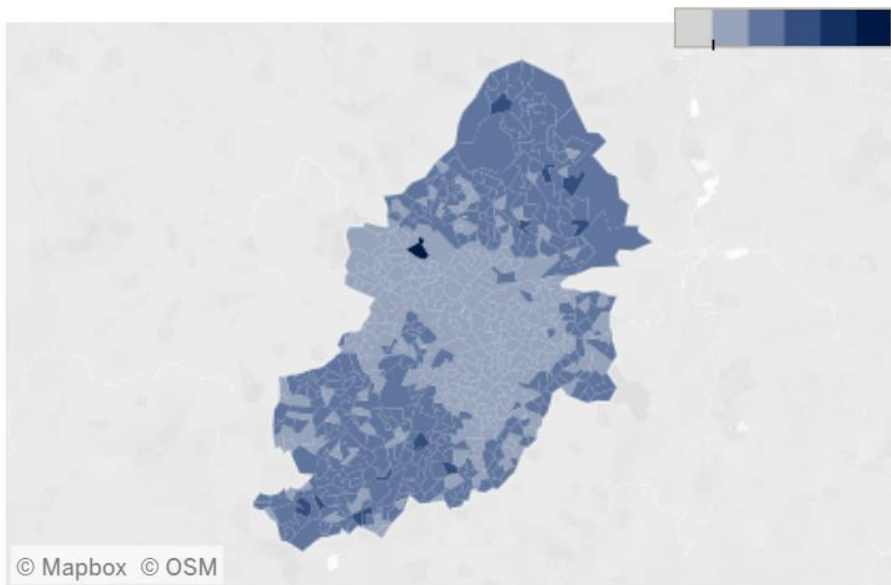


7-day rate of positive Pillar 2 tests LSOA
(per 100K population) Range 0.0 to 489.0

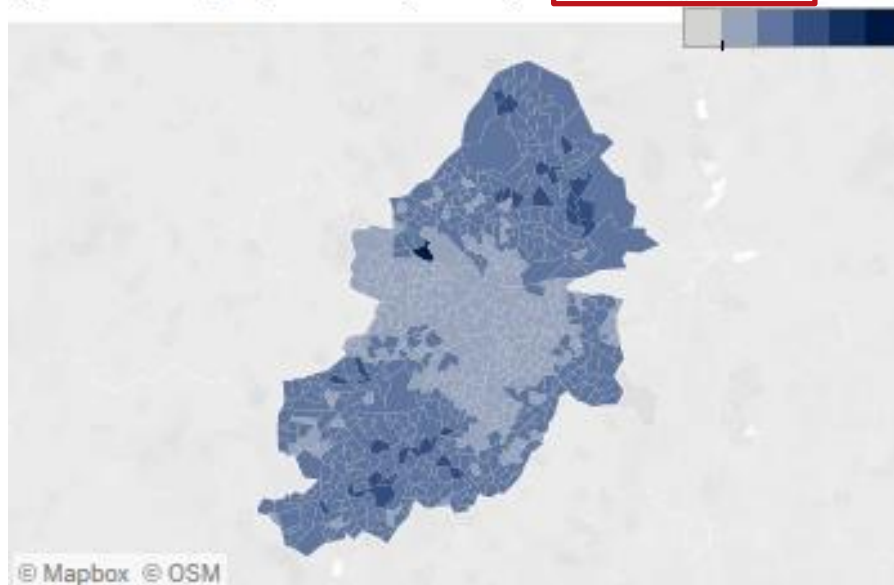


Lateral Flow Testing Progress

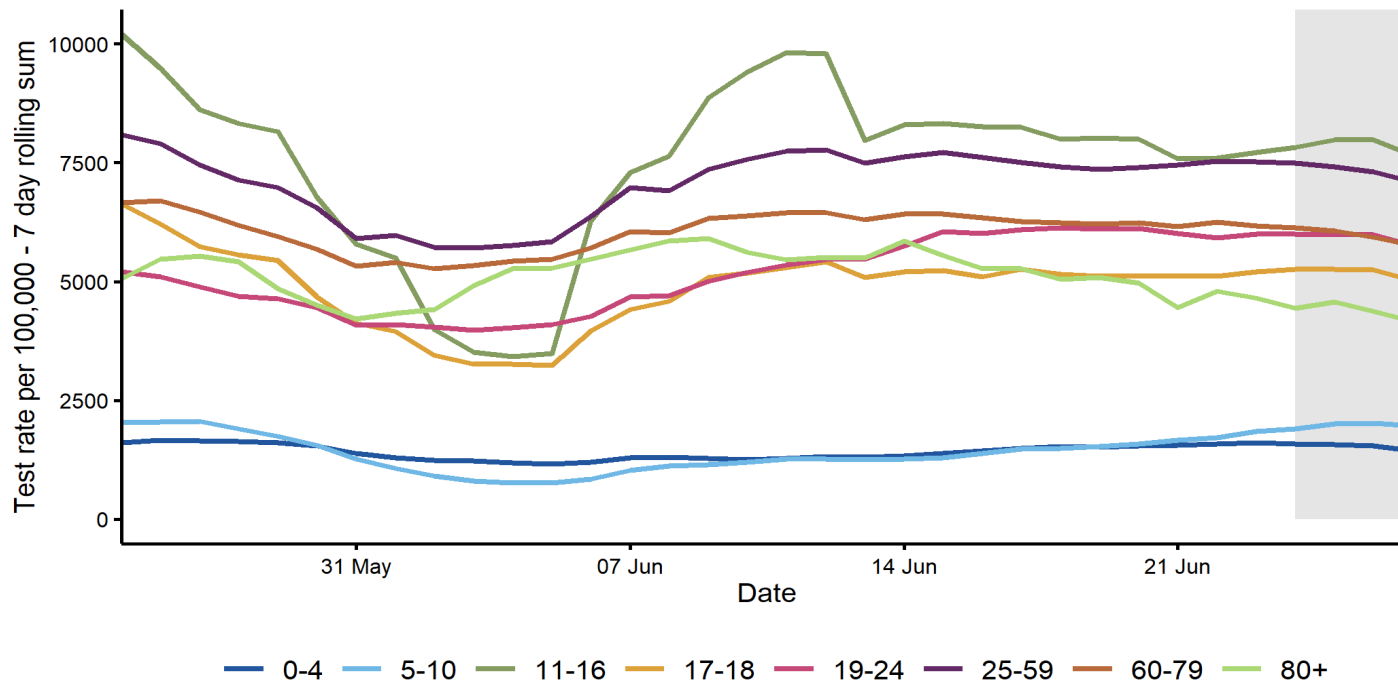
7-day rate of total Pillar 2 tests LSOA 5th June
(per 100K population) Range 0.6K to 18.3K



7-day rate of total Pillar 2 tests LSOA 27th June
(per 100K population) Range **1.0K to 25.0K**



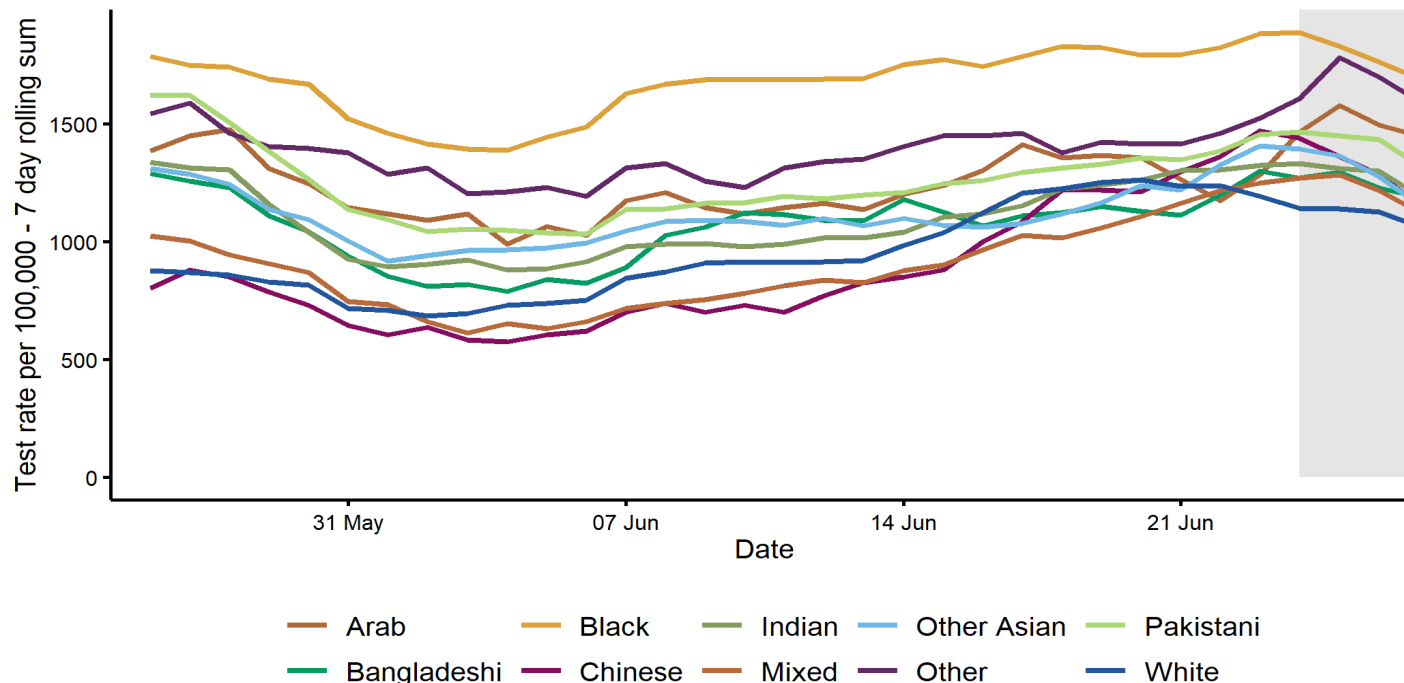
Age-Specific 7-Day Rolling Pillar 1 & 2 Test Rates per 100,000 Population Among Residents of Birmingham: 25th May to 27th June 2021



4 most recent days excluded due to reporting delays

Excluding 1365 tests with missing age data.

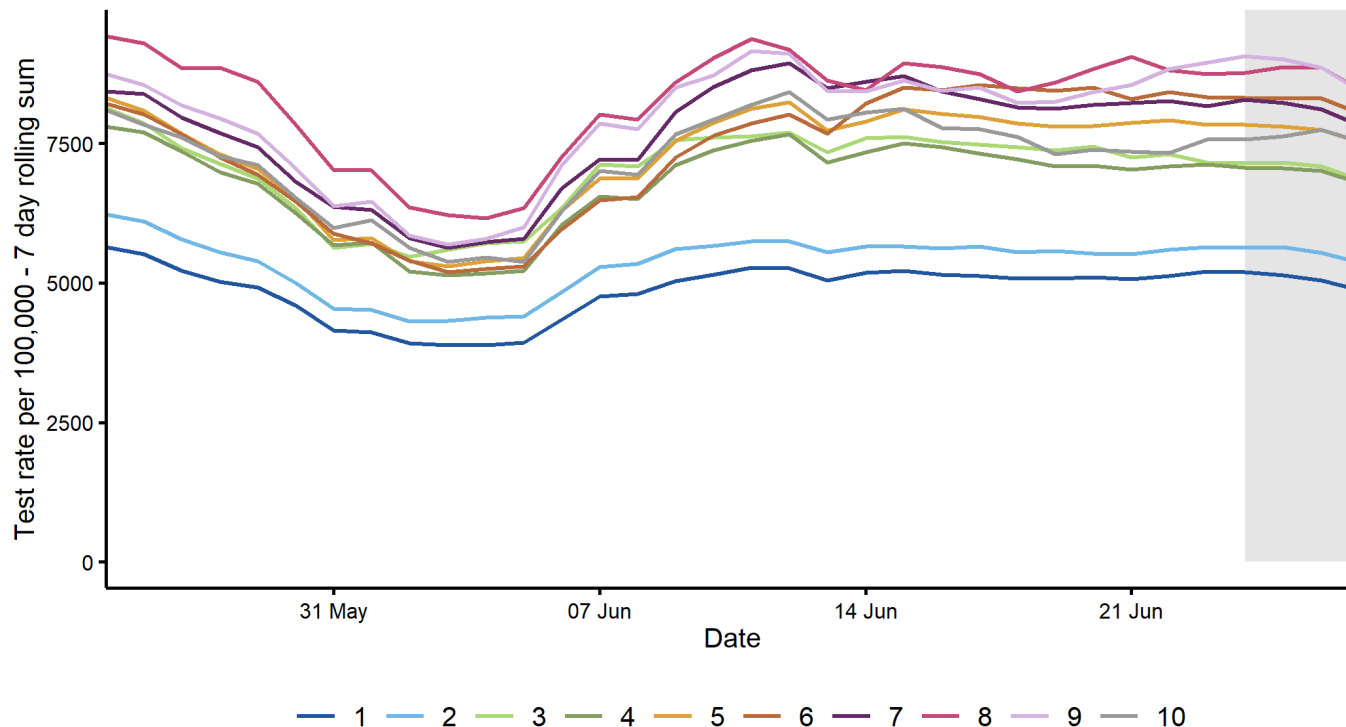
Ethnicity-Specific 7-Day Rolling Pillar 2 Test Rates per 100,000 Population Among Birmingham Residents: 25th May to 27th June 2021



4 most recent days excluded due to reporting delays

Excluding 220984 pillar 2 tests with missing ethnicity data.

Index of Multiple Deprivation-Specific 7-Day Rolling Pillar 1 & 2 Test Rates per 100,000 Population Among Birmingham Residents: 25th May to 27th June 2021



Using Index of Multiple Deprivation (IMD) of LSOA of usual residence (1 = most deprived; 10 = least deprived). Where an IMD is not present in local denominator data, it is not shown.

4 most recent days excluded due to reporting delays

Case Demographics



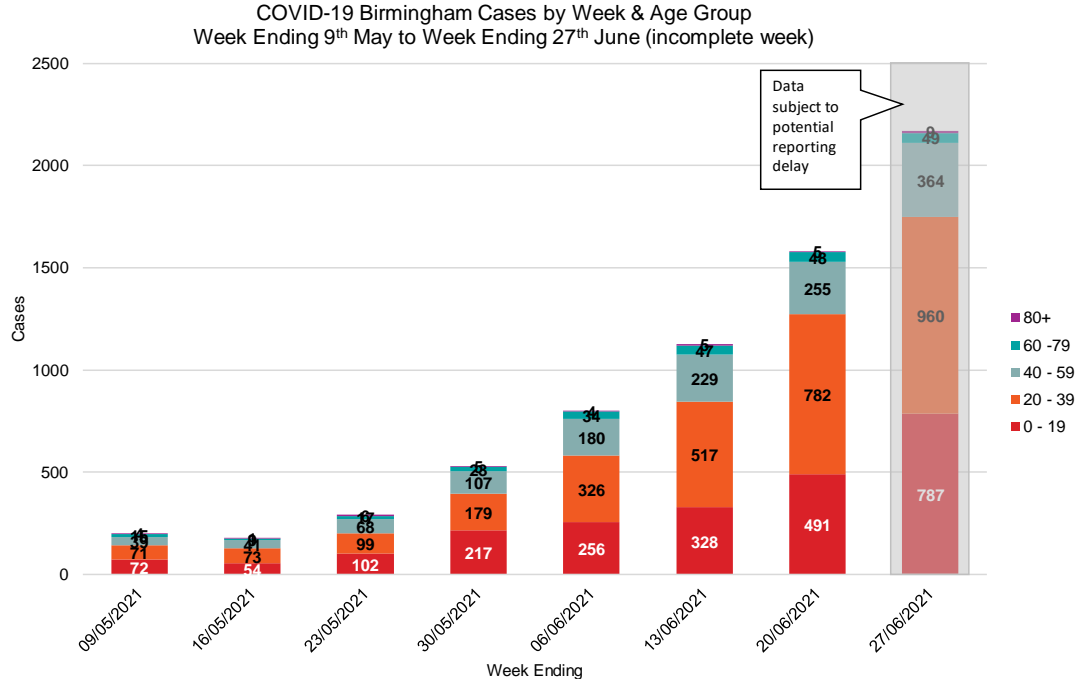
Making a **positive difference** every day to people's lives



Birmingham
City Council

Cases by Week & Age Group

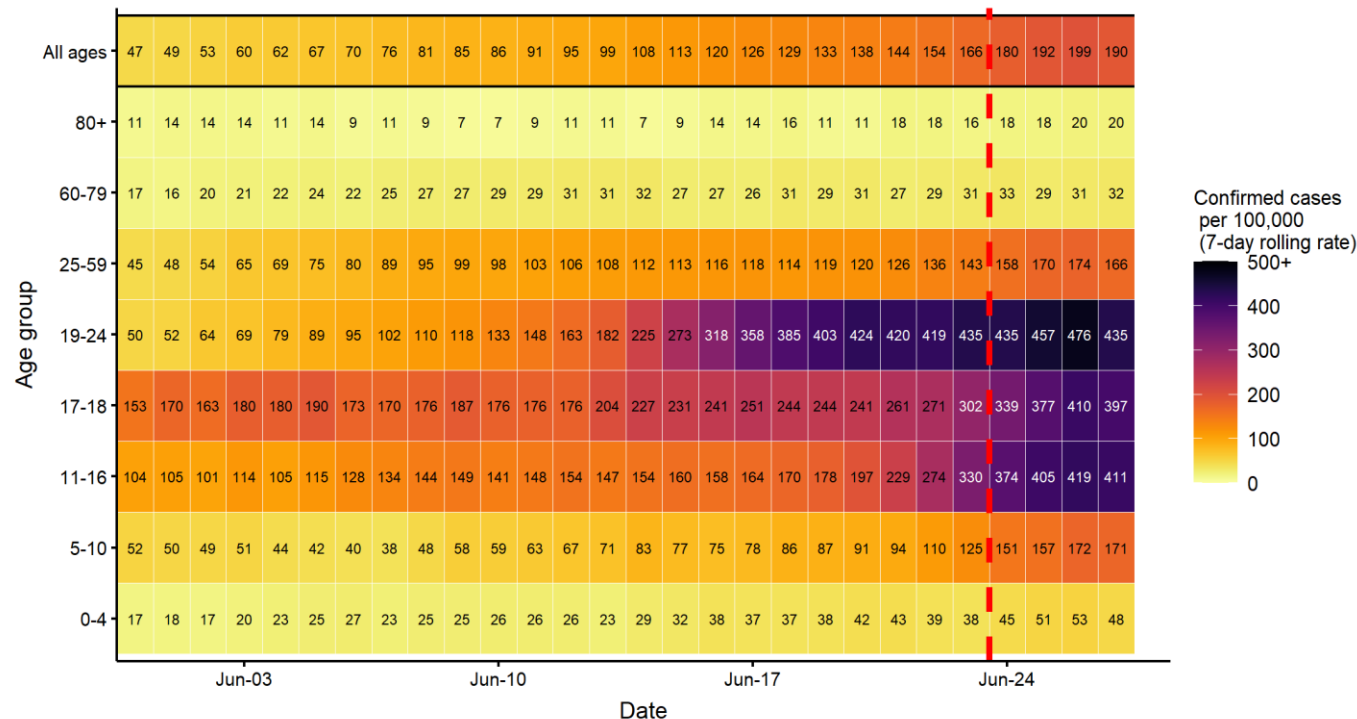
- At present the overall number of cases continues to rise exponentially.
- The 20–39 age group accounts for the highest number of positive cases followed by the 0–19 age group.
- Comparing week ending 27th June to the previous week, cases in the 20–39 age group have risen by 22.8%.



Cases for week ending 27th June 2021 are likely to be under-estimated due to time lags in reporting.

Age-Specific 7-Day Rolling Case Rates per 100,000 Population in Birmingham: 31st May to 27th June 2021

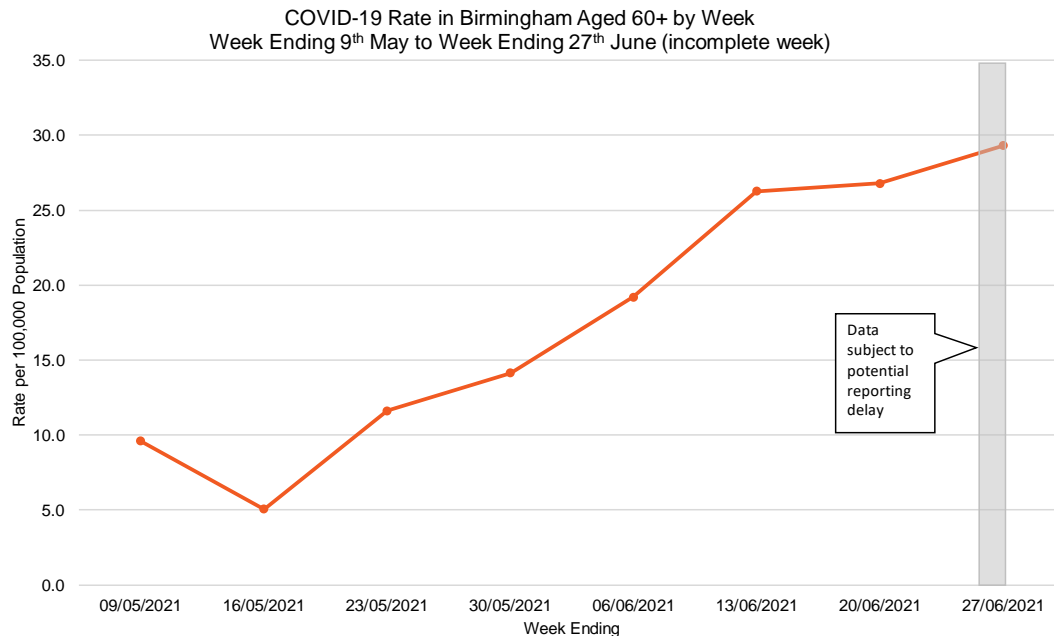
- Testing has been promoted to university students ahead of going home and this has identified some significant clusters in halls of residence and student households which has spiked up case rates in the 19-24yr age group.



The red dashed line denotes the 4 most recent days that are subject to reporting delays.

Case Rate in Population aged 60+

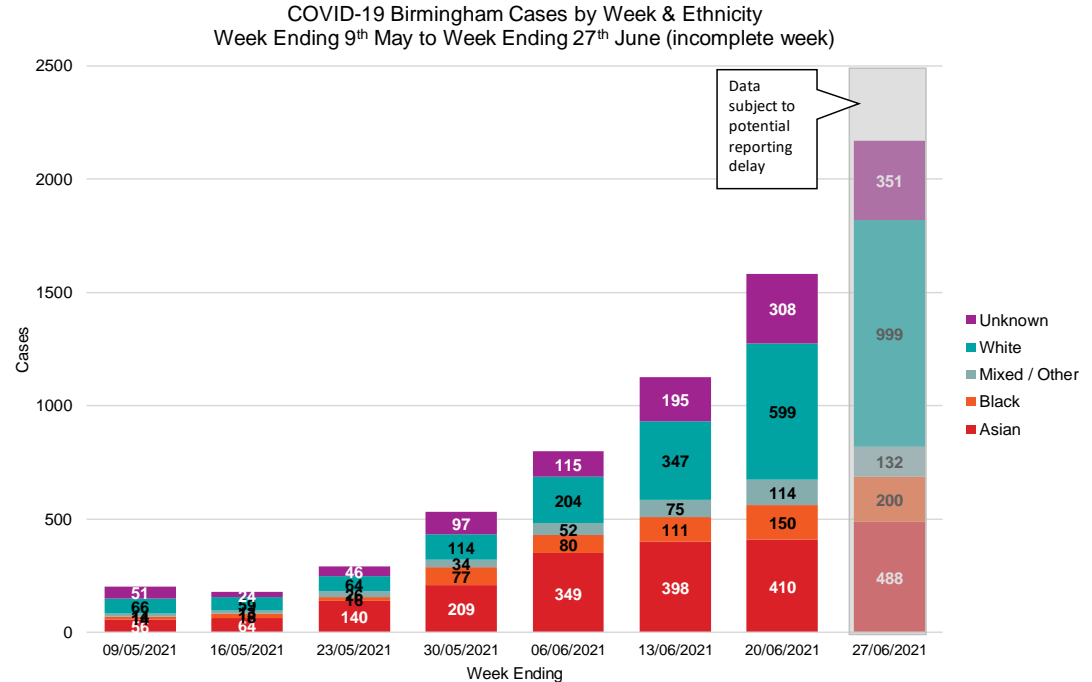
- Since the start of the National Lockdown on 05/01/21, the rate of positive cases in the 60+ age group decreased significantly, however from the second week of May 2021 we are observing a rapid increase in positive cases.
- Comparing week ending 27th June to the previous week, case rates have risen from a rate of 26.8 to 29.3.



Cases for week ending 27th June 2021 are likely to be under-estimated due to time lags in reporting.

Cases by Week & Ethnicity

- At present, cases in all ethnic groups continues to rise exponentially.
- This week, the White ethnic group accounts for the highest number of cases.
- The ethnic group with the largest percentage increase compared to the previous week, was the White ethnicity with an increase of 67%.

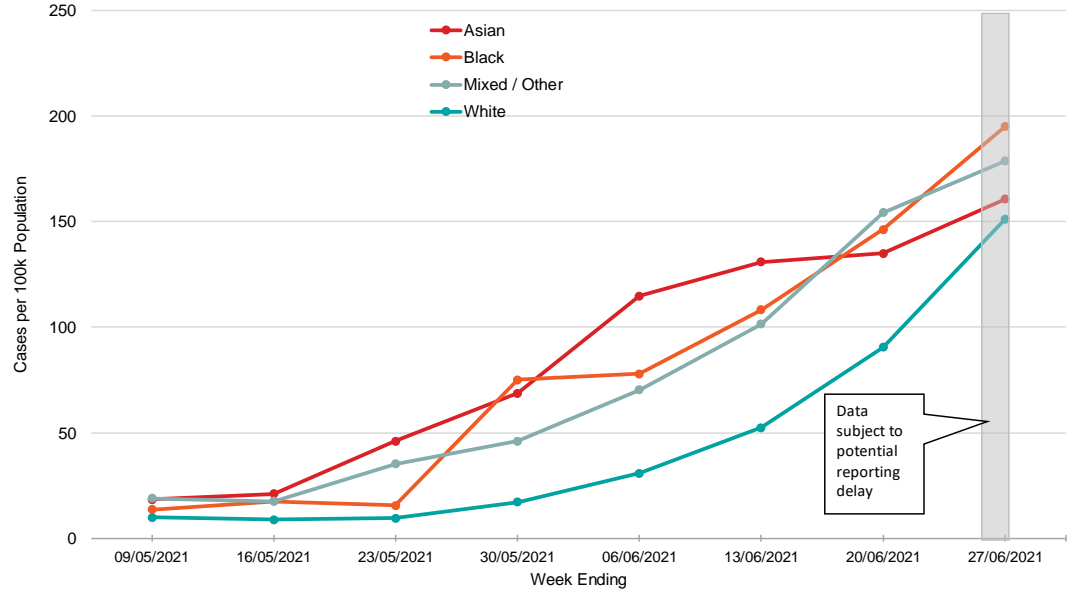


Cases for week ending 27th June 2021 are likely to be under-estimated due to time lags in reporting.

Case Rate by Ethnic Group

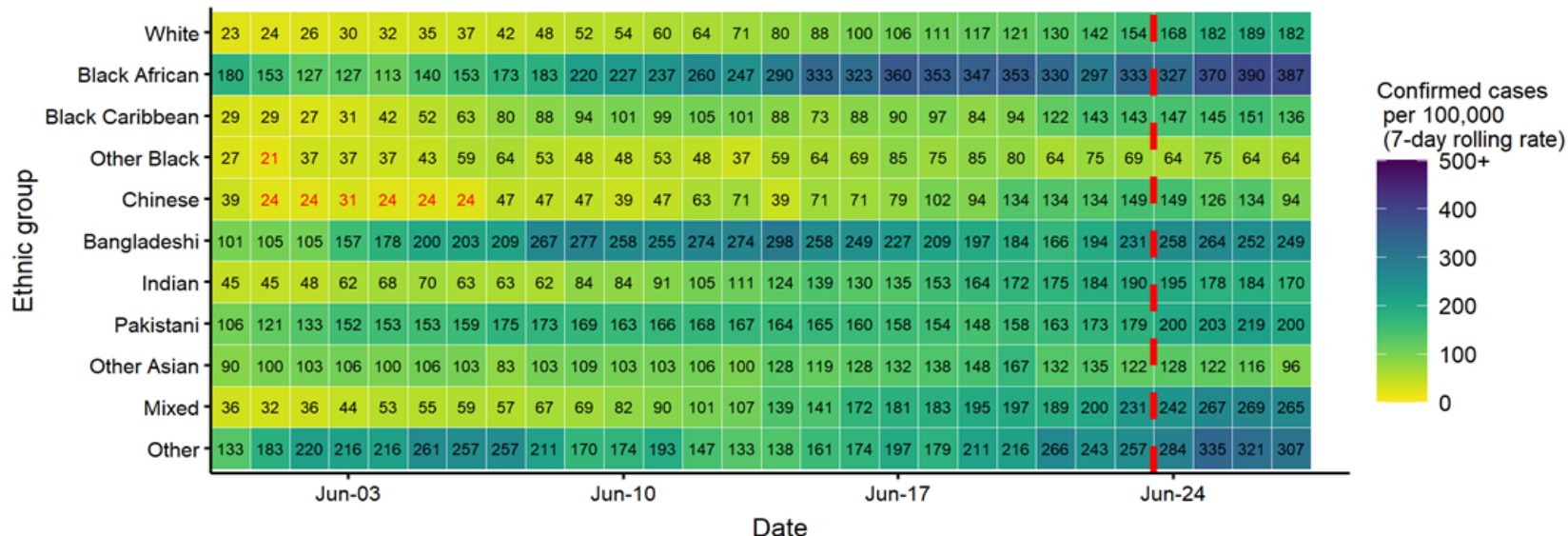
- Currently, the highest positive case rates is seen in the Black ethnic group and the lowest positive case rates is seen in the White ethnic group.
- The long-term trend has shown that the Asian ethnic group has observed the highest positive case rates per 100,000 population since the start of the pandemic.

COVID-19 Birmingham Case Rate per 100,000 Population by Week & Ethnic Group
Week Ending 9th May to Week Ending 27th June (incomplete week)



Cases for week ending 27th June 2021 are likely to be under-estimated due to time lags in reporting.

Ethnicity-Specific 7-day Rolling Case Rates per 100,000 Population in Birmingham: 31st May to 27th June 2021

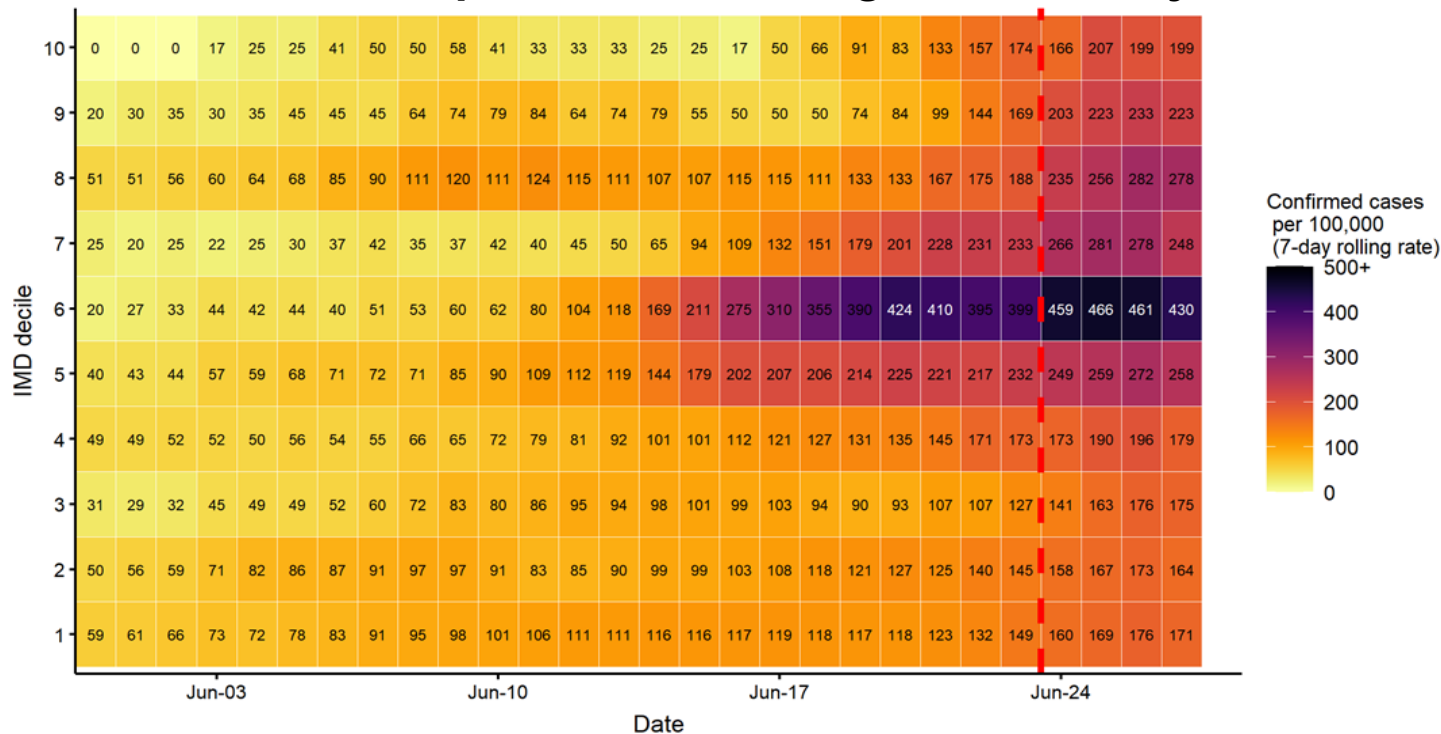


Excluding 4.3% ethnicity data classified as Na or Unknown.
Where text is red rates should be interpreted with caution as underlying case numbers are <5.

As of 26/05/2021 an issue with denominators for the categories Black African and Other Black has been corrected.

The red dashed line denotes the 4 most recent days that are subject to reporting delays.

Index of Multiple Deprivation-Specific 7-Day Rolling Case Rates per 100,000 Population in Birmingham: 31st May to 27th June 2021



Using Index of Multiple Deprivation (IMD) of LSOA of usual residence (1 = most deprived; 10 = least deprived). Where an IMD is not present in local denominator data, it is not shown.

The red dashed line denotes the 4 most recent days that are subject to reporting delays.

NHS Situations



Making a **positive difference** every day to people's lives

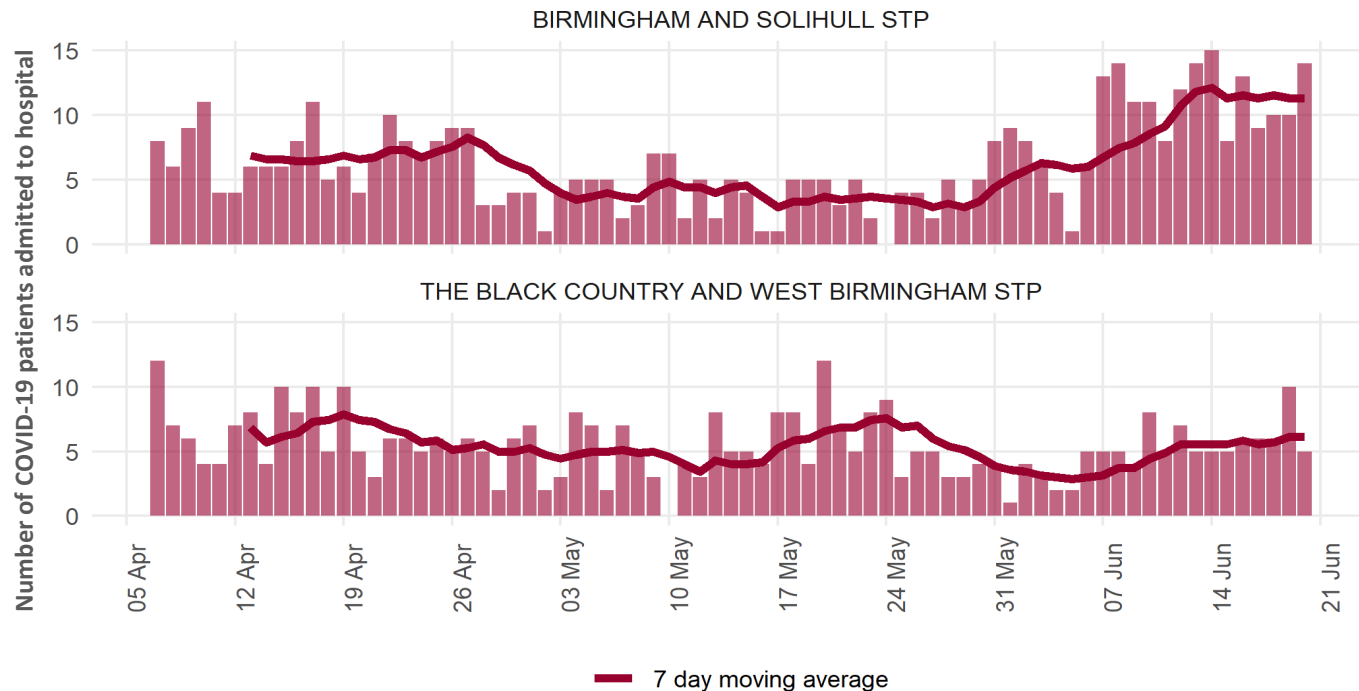


Birmingham
City Council

Hospital Metrics Data

Hospital Trust	Covid - 19 Daily Admissions 20/06	Hospital in-patients 22/06	Patients on Mechanical Ventilation 22/06
University Hospitals Birmingham NHS Foundation Trust	11	63	13
Sandwell & West Birmingham Hospitals NHS Trust	1	25	6
Birmingham Community Healthcare NHS Foundation Trust	2	0	0
Birmingham Women's & Children's NHS Foundation Trust	1	4	1
Birmingham & Solihull Mental Health NHS Foundation Trust	0	0	0

Daily number of COVID-19 patients admitted to hospital in the Sustainability & Transformation Partnerships (STPs) associated with Birmingham, 7th April to 20th June 2021



Deaths



Making a positive difference every day to people's lives

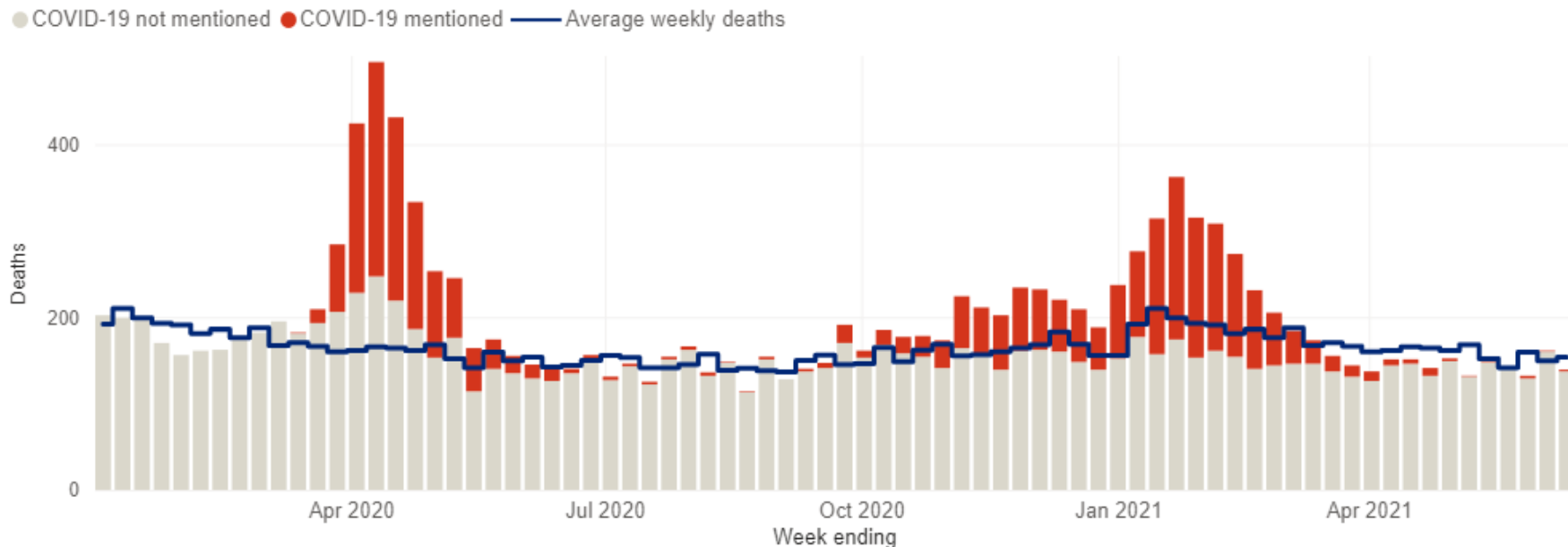


Birmingham
City Council

Death Data

- The most recent death data, where death occurred within 28 days of a positive Covid-19 test for the week ending 27th June, reported **2 deaths** and a death rate of **0.2/100k** population.
- More accurate data based on Covid-19 being mentioned on the death certificate is more historical and the most recent week is that ending 11th June, which reported **3 deaths** registered in Birmingham. Of these, 2 deaths occurred in hospital and 1 in a care home.

Excess Death: All Deaths up to 11th June



We have observed a fall in COVID deaths and there has only been one week with excess deaths (deaths above the 5 year average) in Birmingham for the last 13 reported weeks.

Situations



Making a **positive difference** every day to people's lives










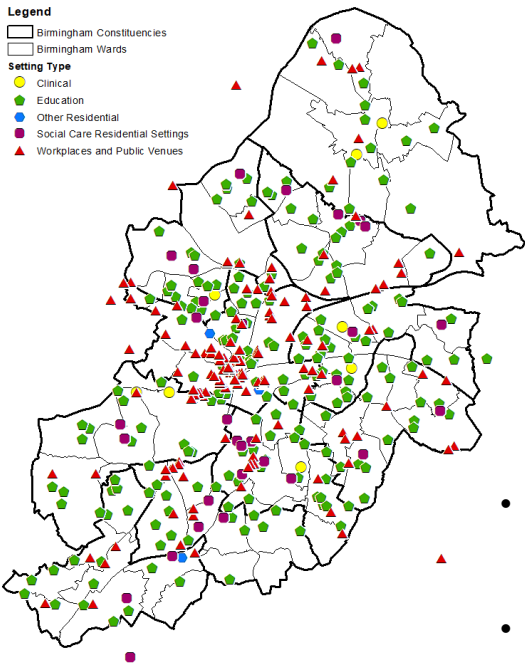
Birmingham
City Council

Confirmed Situations in Birmingham: Last Month & Last 7 days

All Confirmed Situations by Settings Type
26th May to 25th June 2021

Legend

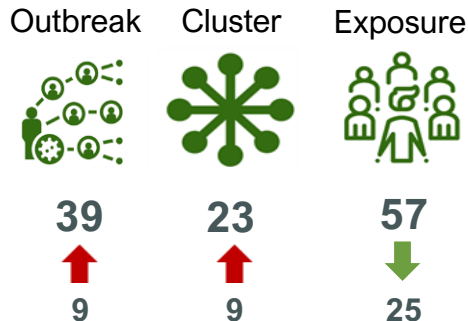
-  Birmingham Constituencies
-  Birmingham Wards
- Setting Type**
-  Clinical
-  Education
-  Other Residential
-  Social Care Residential Settings
-  Workplaces and Public Venues



Produced by Birmingham Public Health Knowledge Evidence and Governance Team (2021).
© Crown copyright and database rights 2021. Ordnance Survey 100021328.

**Map represents the last month.
One postcode can represent
more than one situation**

Type of Situation 19th June – 25th June 2021



Numbers under the arrows show the overall change in situations

- In the week up to 25th June, the number of situations has decreased from 154 to 119, showing a decrease of 35%.
- Exposures have decreased from 82 to 57. Outbreaks have increased to 39. Clusters have increased to 23 this week.
- The majority of situations (48%) are Exposures (57). Of these 68% are in Education settings and 6% in Social Care & Residential settings.
- There are 81 situations reported in **Education** settings, an increase of 17 from last week, a 27% increase.
- **Social Care & Residential** settings have increased by 1 situation this week to 7.
- **Workplace and Public Venues** settings have seen a decrease from 55 to 31 compared to last week, this represents a 44% reduction.
- **Other Residential** settings have no situations this week the same as last week.
- There are no **Clinical** situations this week.

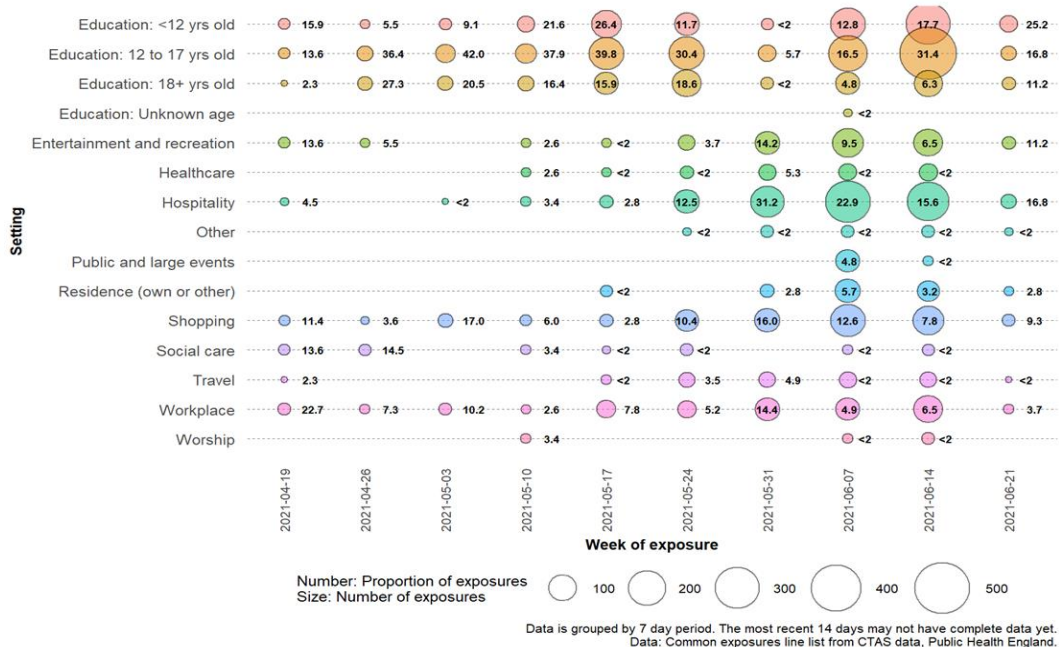
Making a positive difference every day to people's lives

Situation Awareness

- The HPR team logged 312 enquires during week 19th to 25th June, of which 119 situations required intervention. There is a current backlog of 200 notifications, due to a change in the notification process. This will be reflected in next week's figures.
- Education notifications continue to increase with 50% in Primary schools. HPR team are managing 11 significant Outbreaks.
- Residential & Adult Social Care notifications remain low reporting no concerns.
- Workplace & Public Venues notifications have decreased with majority being single case exposures within the city centre wards. HPR team are managing 1 significant Outbreak within a hospitality venue.
- VOC/VUI notifications stand at (2 x VOC-21APR-02 (Delta)). HPR team responded to 2 new cases. Total confirmed cases to date are 118.

Common Exposure Events Reported by Cases Resident in Birmingham*

Number & percentage of weekly exposures by setting: 19th April to 27th June 2021



- Over the last week, **most common exposures occurred in Education, <12 yrs old setting followed by 12 to 17 yrs old & Hospitality.**
- Common exposures **are not** proof of transmission in a setting but provide evidence of where transmission **might** be taking place.

*Reported in the 2-7 days before symptom onset, where at least 2 cases visit the same property 2-7 days before symptom onset and within 7 days of each other, by setting type and date of event. Data is grouped by 7 day period. The most recent 14 days may not have complete data yet.

Contact Tracing



Making a positive difference every day to people's lives



Birmingham
City Council

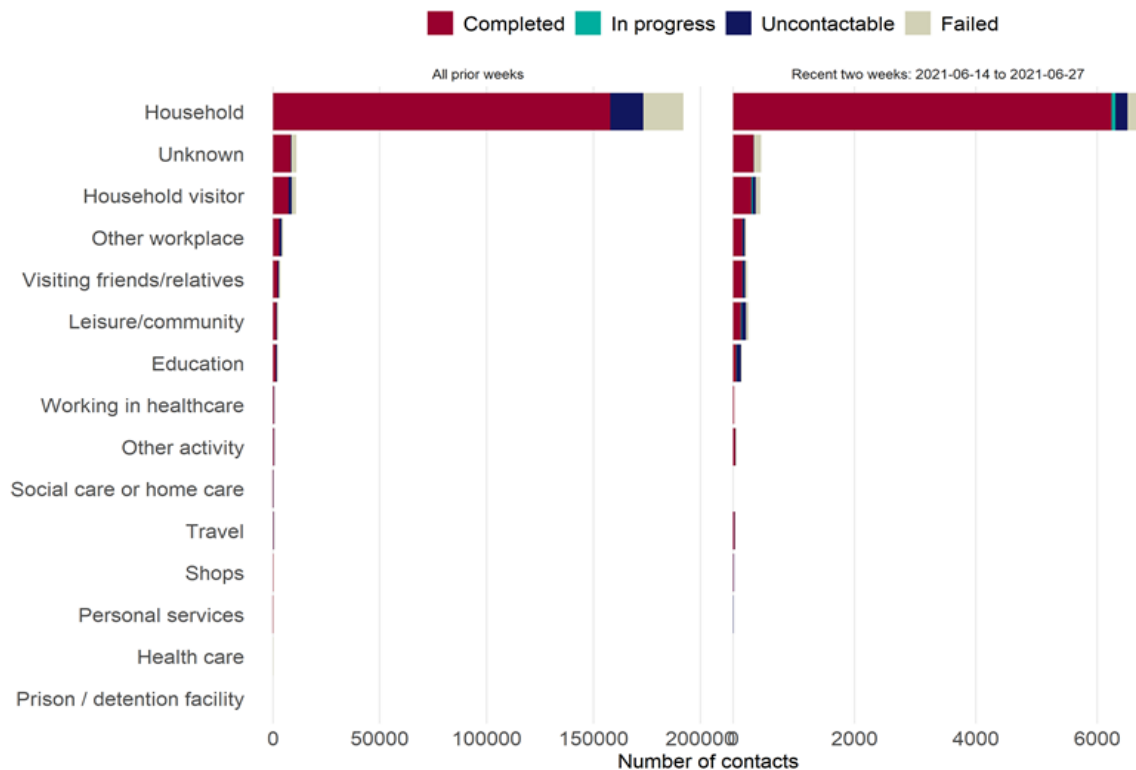
Contact Tracing

- The Contact Tracing Service now covers all Birmingham wards.
- A team providing face-to-face visits is in place for positive cases that:
 - cannot be reached by telephone (3 attempts, including voicemail and texts). These are referred to Environmental Health for follow-up (approx. 2-3 cases/day at present)
 - refuse to co-operate/self-isolate. These are referred to Environmental Health for follow-up visits (approx. 2 cases/day) and if necessary escalated to the Police.
- Total no. of positive cases received in June = 2,471; completion rate of 88%.
- Completion rate increased following implementation of text message sent prior to telephone call and the introduction of WMFS face-to-face follow up visits.
- BCC contribute to and are part of the national reference site to support the ongoing development of the current national Contact Tracing System (CTAS) for managing the case interview, and the new Integrated Tracing System (ITS) that is due to replace CTAS at some time in the future.
- The Local-0 pilot was a success and has now entered BAU. All cases bypass the national team and come directly to the BCC contact tracing team. The service will be left 'switched on' with further work continuing behind the scenes.

Contact Tracing –(continued)

- We have recently recruited 6 new call handlers to work on case tracing (2 of which replaced team members who moved rolls). Recruitment continues due to the growing number of cases with a further 6 potential agents currently undergoing training.
- We have seen case load increase three fold largely due to the easing of restrictions and the increased transmission from the Delta variant. This has resulted in approximately 208 cases per day having to be returned to the national team.
- An improved escalation process between the case tracing team, Health Protection Team and Environmental Health is now live for the escalation of Workplace, Education and activities. This new process increased case tracing capacity by approx. 20 cases per day.
- In the last 7 days we have handled 730 cases compare with 559 cases in the previous week. This does not include the 1,457 cases returned to the national team this week.
- The current doubling time nationally is 11.2 days.

Test & Trace Contacts by Exposure/Activity Setting & Current Outcome: 28th May 2020 to 27th June 2021



- Over the past 2 weeks, **Household** is the most common category, secondly is the **Unknown** category followed closely by the **Household Visitor** category.
- A decrease in the **Unknown** category has been observed in recent weeks, where data on exposure/activity setting were not provided.
- In the past two weeks, over 6,000 contacts were successfully completed, i.e. asked to self-isolate.

Data collected by NHS Track & Trace (NTAT).
 Uncontactable cases: insufficient contact details provided to contact the person.
 Failed contact tracing: contact tracing team attempted but did not succeed in contacting an individual.

Communications & Engagement



Making a positive difference every day to people's lives



Communication and Engagement Plan/Objectives (updated March 2021)



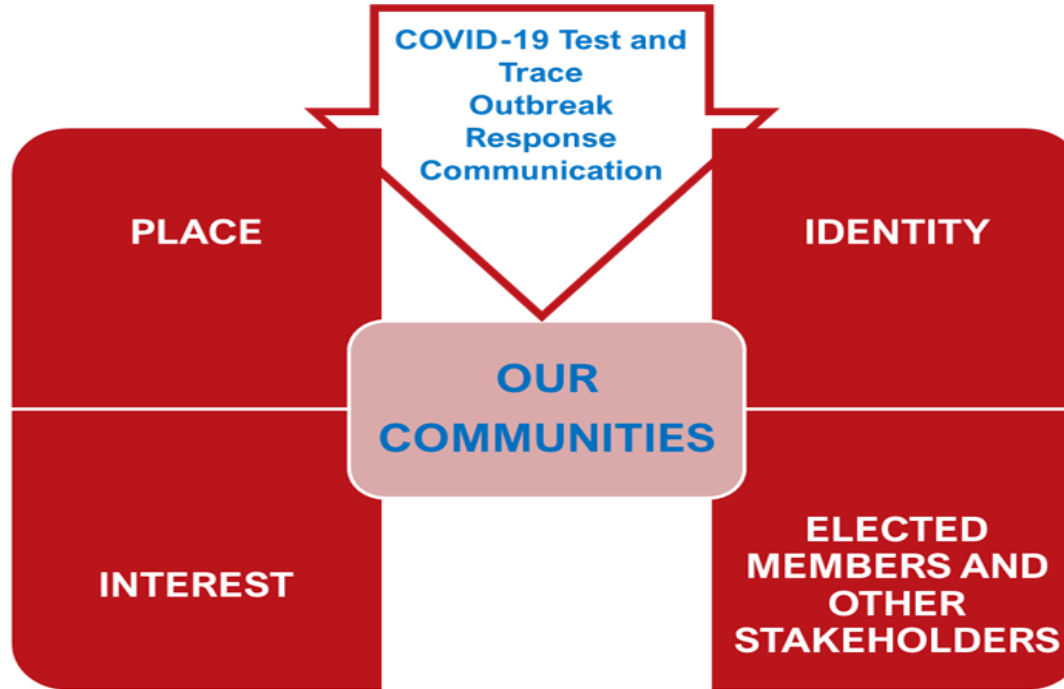
1- Support understanding and awareness of guidance and control measures

2 - Enable partnership working to deliver the local plan

3 - Establish appropriate and effective channels for delivery of the plan

4 - Assess impact and reflect the evolving evidence-base on behavioural insight

Core engagement threads to aid delivery



Digital Engagement: March to June 2021



Communication Channels

Online Q&As, Radio, Podcasts & TV

Tues 15th June & Tues 22nd June – Weekly BBC WM Interview

Tues 15th June – Birmingham Live Facebook Q&A

Tues 15th June – Free Radio interview

Tues 15th June – ITV Central interview

Tues 15th June & Mon 21st June – Midlands Today interview

Thursday 17th June - ZMC TV Network interview

Emails: Topics covered include mobile vaccination vans, enhanced support update via special COVID Champions meeting including links to materials such as Isolation pack, Vaccination toolkit.

Partner channels: GBCC <https://mailchi.mp/chambernews/eviction-ban-extension-a-huge-relief-for-tenants?e=87686a7e9a> ; BVSC: <https://www.bvsc.org/covid-19-information-and-resources>

Verbal: Word of mouth communication via communities about enhanced support testing, isolation and vaccinations.

Digital Engagement: March to June 2021



Social Media – Healthy Brum



Instagram

Post engagements – 868

Post reach – 20k

Facebook

Post reach – 38k

Post traffic (clicks) - 7.4k

Twitter

Post engagements – 1.3k

Post traffic (clicks) - 9.8k

Website

500,000 visits to our COVID-19 Pages

Website Updates:

- Enhanced support plans and FAQs- schools
- Translated Isolation support pages
- Translated Vaccine toolkit and slides
- Accessible BSL resources
- Champions COVID-19 dashboard
- Roadmap guidance and other related COVID-19 updates

Partner Website Updates

- Latest vaccination mobile van
<https://www.birminghamandsolihullcovidvaccine.nhs.uk/walk-in/>

Social media Key messages

Enhanced support plans.

Mobile Vaccination Units.

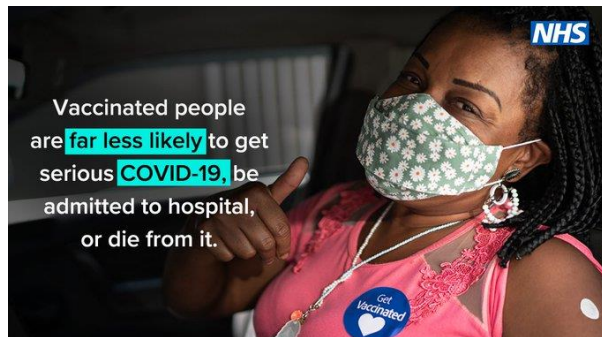
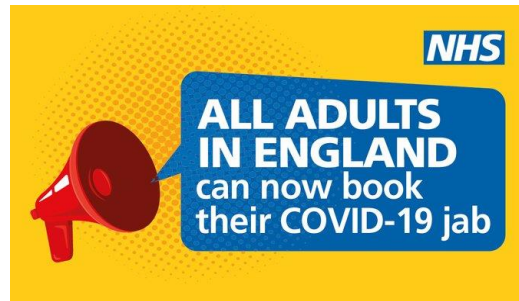
Mental health awareness

Ventilation when indoors (Euro 2021)

Home and door-to-door LFD testing

Vaccines access for 18yrs+ and continued caution with relaxing of lockdown restrictions

Communication and Engagement updates 15th June 2021



COVID Champion Programme

Coverage of champions across all 69 wards – at 28th June 2021

- 801 Community Champions + 34 Youth Champions.

Ongoing work:

- Analysis of representation at ward and demographic level to help develop a recruitment strategy.
- Current webinar themes: enhanced support, testing, vaccination, isolation, mental health and grief support.
- Thematic analysis of key themes (inbox, webinars & social media).
- Engagement via fortnightly webinars (next one 24th June).
- Vaccination Toolkit develop to support champions and their communities.

Good representation of different religions, and the LGBTQ community. More representation is needed for males, Bangladeshi & Caribbean communities, young people aged 18-30 years and people who consider themselves to have a disability.

Birmingham COVID-19 Champions as at 7th June 2021

Local Authority Count

Birmingham - 691

All Other Local Authorities - 101

2018 Birmingham Wards

Birmingham LA



Produced by Birmingham Public Health Division (2021)
© Crown copyright and database rights 2021 Ordnance Survey 100021326.

Engagement with Faith Groups

Over the last month we have continued to

- Birmingham Masjids, Black Led Churches and Interfaith group fortnightly meetings to give COVID-19 updates.
- Increased awareness on enhanced support in Birmingham across the areas of vaccination, isolation and testing and Roadmap rules.
- Increased messaging about mobile vaccination van and the wards being deployed and target engagement to increase uptake.
- Access to twice weekly tests and bulk order LFD test kits for places of worship.
- Present up to date and accurate information on what step 3 of the Roadmap looks like as a result of the delay to step 4.
- Share resources with accurate information and interpret faith group guidance to inform congregations and support myth busting and addressing misinformation. Self-isolation pack and Vaccine toolkit shared.
- Continue to share examples of COVID -19 messaging materials and resources produced by faith groups on social media and other channels.
- Fortnightly meeting with places of worship in partnership with Environmental Health to support with operational issues, day to day communal worship, cleaning, risk assessments etc
- COVID Charter and toolkit: https://www.birmingham.gov.uk/info/50231/coronavirus_covid-19/2336/covid_charter_for_faith_settings

Information gathering

- Feedback about challenges faced by faith groups and their respective congregations on issues such as; COVID-19 vaccination, singing, worship experiences, isolation, enforcement, testing and other issues pertaining to COVID -19.
- Feedback from faith leaders about Birmingham being an enhanced support area and impact on citizens and suggestions.
- Working with Cabinet office to address concerns from Birmingham Masjids about Step 4 date July 19th coinciding with Eid Ul Adha.
- Seeking ongoing support and responses from faith groups to help with enhanced support messaging about LFD home test kits, encouraging uptake of vaccines, the importance of isolation and step 3 of the Roadmap such as a request for FAQs on Covid variants.

Community and Partnership engagement

- Communication and engagement regarding enhanced support in Birmingham and 15 high interest wards sharing information with businesses, workplaces, education settings, faith groups and via emails, webinars and in addition a newsletter to community champions.
 - Held meetings and targeted webinars with these settings for questions and to advise key stakeholders about logistics. Special Public Health update for Champions on Wednesday 16th June.
 - Shared information via the settings and responded to any queries providing useful information and links to webpages.
 - Shared briefings and updates with elected members.
 - Working collaboratively internally with BCC Environmental Health colleagues and Covid Enforcement Officers and externally with Birmingham Children's Trust to support with COVID-19 messaging in priority wards and offer latest information and resources widely.
- Testing:** Raised awareness about universal home lateral flow testing in partnership with the local community champions, community partners and the CCG. (*Everyone can order a test kit*)
- Vaccination:** Supported community partners to lead conversations with their communities to address any concerns about vaccination and addressing misinformation.
 - Mobile vaccination sites: updated schedule daily at <https://www.birminghamandsolihullcovidvaccine.nhs.uk/walk-in/>
 - Working with and supporting Black Faith Leaders to take Mobile Vaccine van to areas within West Birmingham that are densely populated by the Black Community and vaccine uptake is low. Planning for Mobile Vaccine van at Aberdeen Street Church of God of Prophecy Winson Green (Soho and Jewellery Quarter Ward) Saturday 3rd July 2021
 - Link to eligible vaccine age groups advertised: <https://www.nhs.uk/conditions/coronavirus-covid-19/coronavirus-vaccination/coronavirus-vaccine/>
 - Link to available communications shared: <https://www.birminghamandsolihullccg.nhs.uk/get-involved/campaigns-and-toolkits>
- Isolation:** Isolation pack hard copies distribution to community groups through conduits such as EHOs.

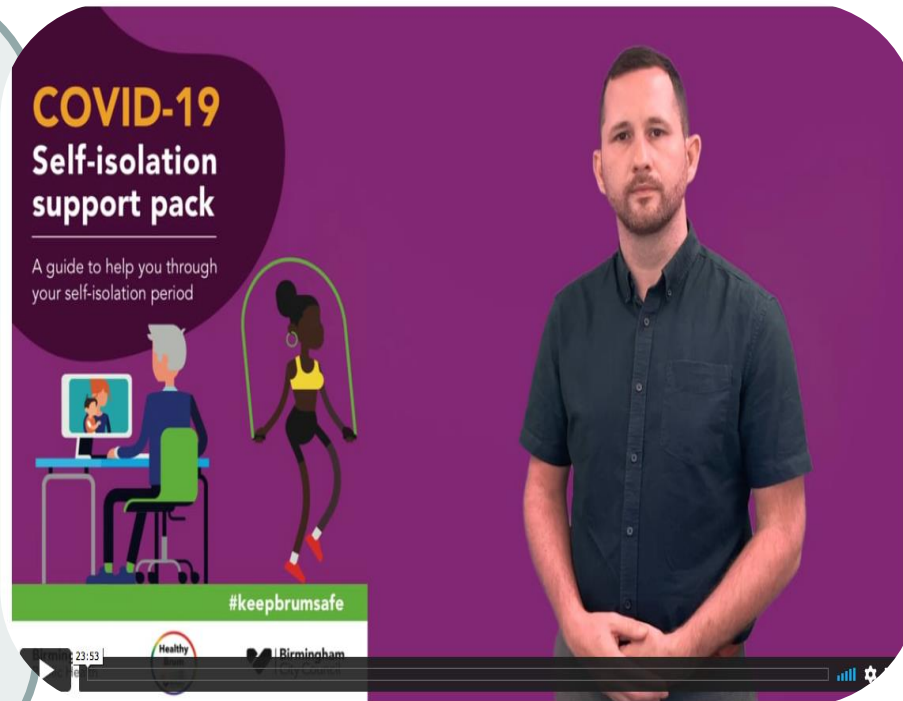
Commissioned Provider Spotlight

[CommPlus](#)-specialists in British Sign Language provision and training- have been commissioned to produce a range of informative COVID-19 related education materials to support deeper engagement with people with poor literacy and the Deaf community.

Across the City, many people will be able to make an informed choice through these accessible materials about COVID-19. The community will receive helpful information that enables them to participate in regular testing, accept vaccination when offered, access support during isolation and maintain their wellbeing if experiencing post COVID-19 health conditions.

A key element of their project will involve working collaboratively with other Community Providers to co-produce accessible resources for those within the Deaf community.

WATCH OUT! *CommPlus have created BSL video versions of our **COVID-19 Self Isolation support pack and Vaccination toolkit** that will be available on our website later this week.*



Further Work in Development

▪ Representation

- Extending and strengthening relationships with our 18 existing commissioned partners to co-ordinate the set up and delivery of a minimum of 10 befriending/non-digital channels for those communities with limited digital access and to accelerate existing engagement to support understanding and the uptake of testing, vaccination, recovery and any emerging themes from April 2021 for 12 months.
- Asset mapping the 69 wards to highlight gaps in our current engagement work, scope and commission further partners to reach the identified communities.

▪ Reach

- Review the COVID Champions network and recruitment to enhance communications and engagement and local asset leverage to improve relationships with communities and their understanding of different ways of testing and range of vaccinations and managing recovery.
- Champions Feedback. Encourage champions to share stories on the Newsletter 'Champions' corner' to support with wider reach across communities.
- Working with communities and partners to support with enhanced support and focus on more engagement across the City and 15 targeted wards.
- Conversations with influencers within the Black Community to address low uptake of COVID-19 vaccine.
- Launch of Business Champions with GBCC – two webinars scheduled for 28th June and 1st July. Results due for GBCC COVID-19 related survey, extending reach to include Growth Hub, BIDs and FSB.

▪ Response

- Collating responses from champions and faith settings in relation to Vaccine toolkit and isolation pack.
- 'You Said, We Did' – WhatsApp communication set-up.
- Progressing on monitoring commissioned partners fund through Ministry of Housing and Local Communities (MHCLG) grant for Communications and Engagement programme to strengthen our relationships with groups during the COVID-19 pandemic

