

Working with the PREVENT Duty

**Overview and Scrutiny Committee,
26 April 2017**

Waqar Ahmed – PREVENT Lead
Dr Tony Stanley – Chief Social Worker
10 Woodcock Street, Birmingham
6 April 2017

Background and working together

Effective cross-council and interagency partnership

- With Counter Terrorism Unit colleagues
- Working within the safeguarding agenda

Prevent is one component of the UK Counter Terrorism Strategy known as CONTEST which is organised around four work-streams, each comprising a number of key objectives

- *Pursue*: to stop terrorist attacks;
 - *Prevent*: to stop people becoming terrorists or supporting terrorism;
 - *Protect*: to strengthen our protection against a terrorist attack; and
 - *Prepare*: to mitigate the impact of a terrorist attack.
- PREVENT Duty – July 1, 2015
 - Social workers, teachers, nurses...’to proactively help offset extremism or terrorism ‘

Progress in Education

- 100% of schools undertaken Prevent training
- 553 Home Office Accredited Prevent trainers in schools representing 68% of schools
- 170 schools engaged with UNICEF Rights Respecting School Award, impact for 65000 children and young people
- s175 safeguarding audit – schools self assessment on progress
- Secured funding for an additional schools officer

Helping families early

- Partnership of community organisations providing a range of support for vulnerabilities linked to extremism
- A new route to access support, commenced Jan 2017
- Family Support and Social Workers can request support for allocated cases. They remain the Lead worker.
- Includes taking into account a whole family approach, which in turn considers all presenting vulnerabilities
- Awareness raising is ongoing and progressing

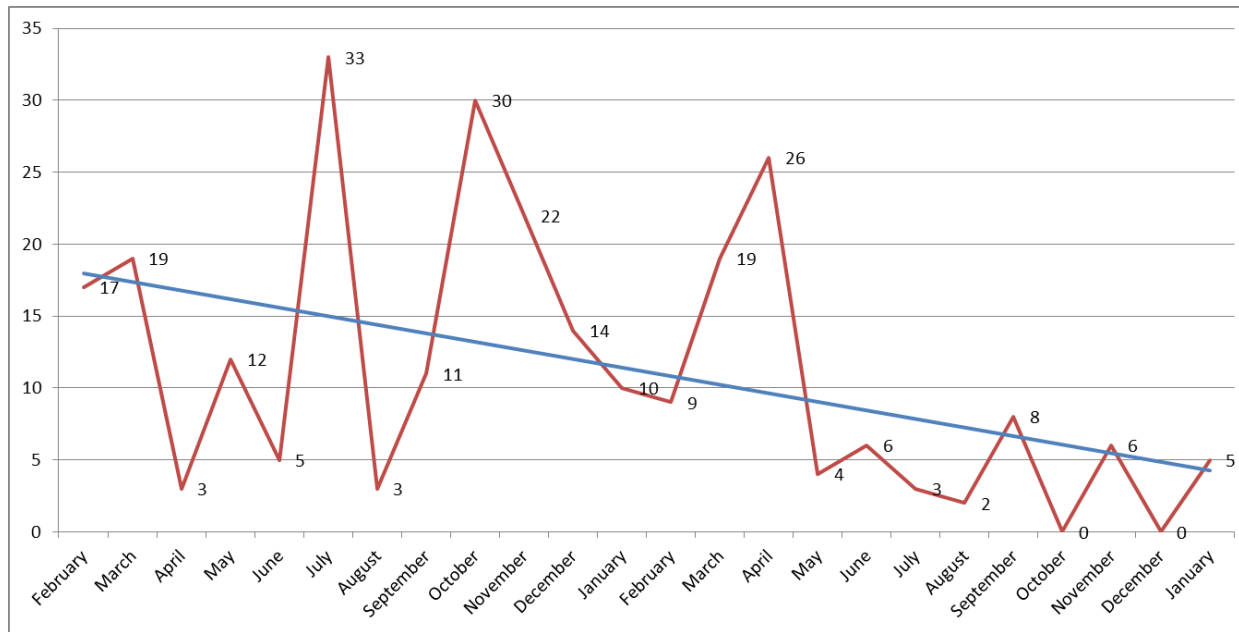
Practice guidance in place

- CSC Prevent Guidance published Jan 2017 providing:
 - Clear Pathway for CSC referrals
 - Screening tool for referrers to complete with Request for Support – aim to clearly articulate the concerns and intelligence
 - Assessment guidance for social workers and family support to enable them to explore and articulate the full range of concerns which may be linked to extremism
 - Clear communication and joint working with Prevent
- We are seeing more detailed and comprehensive assessments

Training and Support

- CSC Prevent Guidance roll out commenced Feb 2017, covering Family Support and Social Work
- WRAP3 Home Office Training will be rolled out to Social Workers from April 2017
- Majority of Family Support have already attended WRAP3 Training, a refresher is taking place in April 2017
- All CSC staff are being directed to complete Home Office Online Training on Prevent
- Working with Learning and Development colleagues to develop a 3 tiered approach to training mirroring RSRT Framework

Decreasing referrals, better quality



← 2015 →

← 2016 →

2017

Summary

- Downward trend in referrals to social care
- Maturity in the wider system
- Multi-Agency channel panel in place
- Decrease in inappropriate referrals to CSC
- More guidance and practice tools to help
- Ongoing engagement with frontline staff
- Safeguarding focus
- Significant harm distinction



Chief Social Work Office

0121 303 3762

tony.stanley@birmingham.gov.uk

Waqar.ahmed@birmingham.gov.uk

birmingham.gov.uk