

COVID-19 Vaccination Overview

25/01/2022



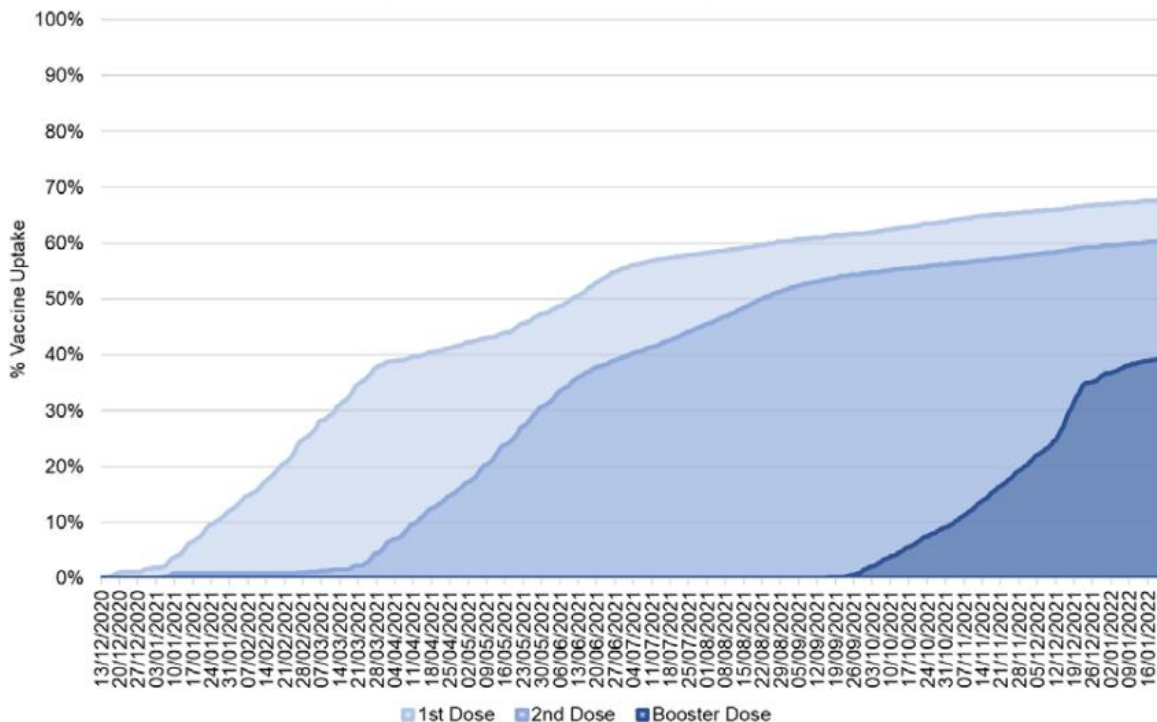
Covid-19 Vaccine Roll Out

- Booster jabs will continue to be offered to all adults (aged 16 and over).
- Children aged 12 to 15 can now get their second vaccine dose from 12 weeks after their first vaccine dose. They can get the vaccines either:
 - at school
 - book online for appointments at vaccination centres or pharmacies
 - through walk in sites, which are available [at locations across Birmingham](#).
- From April 2022, Covid-19 vaccination will be mandatory for all patient-facing health and social care workers in England including nurses.
- Figures from the [GOV.UK](#) website indicate that 90.8% of the English population aged 12 years and over have had their 1st vaccine dose, 83.5% their 2nd dose, and 63.8% their booster dose. This compares to 67.7%, 60.5% and 39.4% in Birmingham.

Birmingham Covid-19 Vaccination: 1st, 2nd and Booster Doses by Date

NIMS Data (Extracted 24/01/2022)

Birmingham - All Doses Comparison Aged 12+ by Date



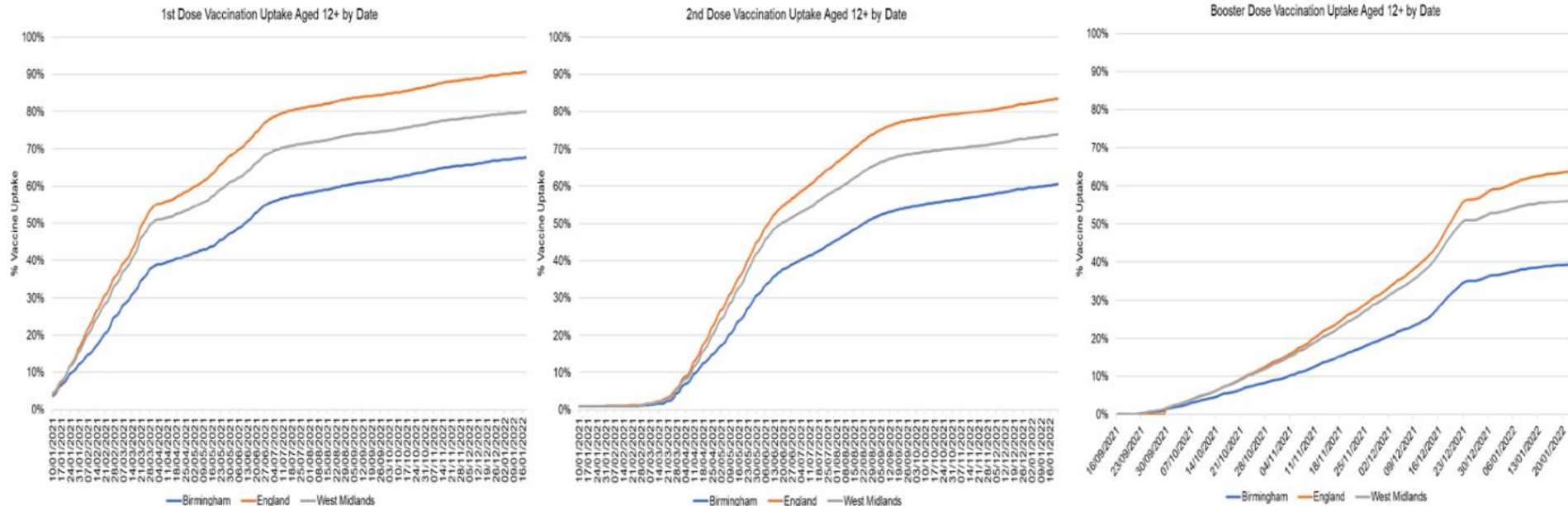
- 1st dose uptake began in late 2020 and showed strong initial growth before slowing in April 2021. Current uptake is 67.1%.
- 2nd dose vaccination began in April, with uptake at the earlier stages slightly more gradual than the 1st dose. Both are now showing low but consistent week-on-week increases. Current uptake is 60.6%.
- Booster uptake began in September 2021, and was initially slower than either 1st or 2nd doses, with a notable exception during a national push in December. Current uptake is 40.1%.



**A BOLDER
HEALTHIER
BIRMINGHAM**



Uptake by Date of Covid-19 Vaccination



Uptake* of 1st dose has slowed since the end of June, whilst uptake of 2nd dose slowed in mid-August. According to GOV.UK figures, the current rate of uptake for the 1st, 2nd and booster doses in Birmingham residents aged 12 years and over (67.7%, 60.5%, 39.4%) is significantly lower than the rates for West Midlands (80.0%, 73.9%, 56.1%) and England (90.8%, 83.5%, 63.8%).

Source: GOV.UK, accessed 24 Jan 2022

% Priority Groups, Covid-19 Vaccinated - NIMS data updated 24/01/2022

12-15 years

Eligible - 72k
1st dose - 35.5%

12 years and over*

1st dose - 67.1%
2nd dose - 60.6%
Booster dose - 40.1%

Under-50s*

1st dose - 57.8%
2nd dose - 49.0%
Booster dose - 24.8%

50 years and over

1st dose - 85.4%
2nd dose - 83.6%
Booster dose - 70.2%

65 years and over

1st dose - 90.7%
2nd dose - 89.7%
Booster dose - 81.2%

Booster uptake

All ages - 40.1%
>80yrs - 82.4%

Clinically Extremely Vulnerable

1st dose - 87.0%
2nd dose - 84.0%
Booster - 63.4%

COVID At Risk

1st dose - 80.1%
2nd dose - 75.7%
Booster - 52.1%

** Under 50s are aged 12-49 years old*



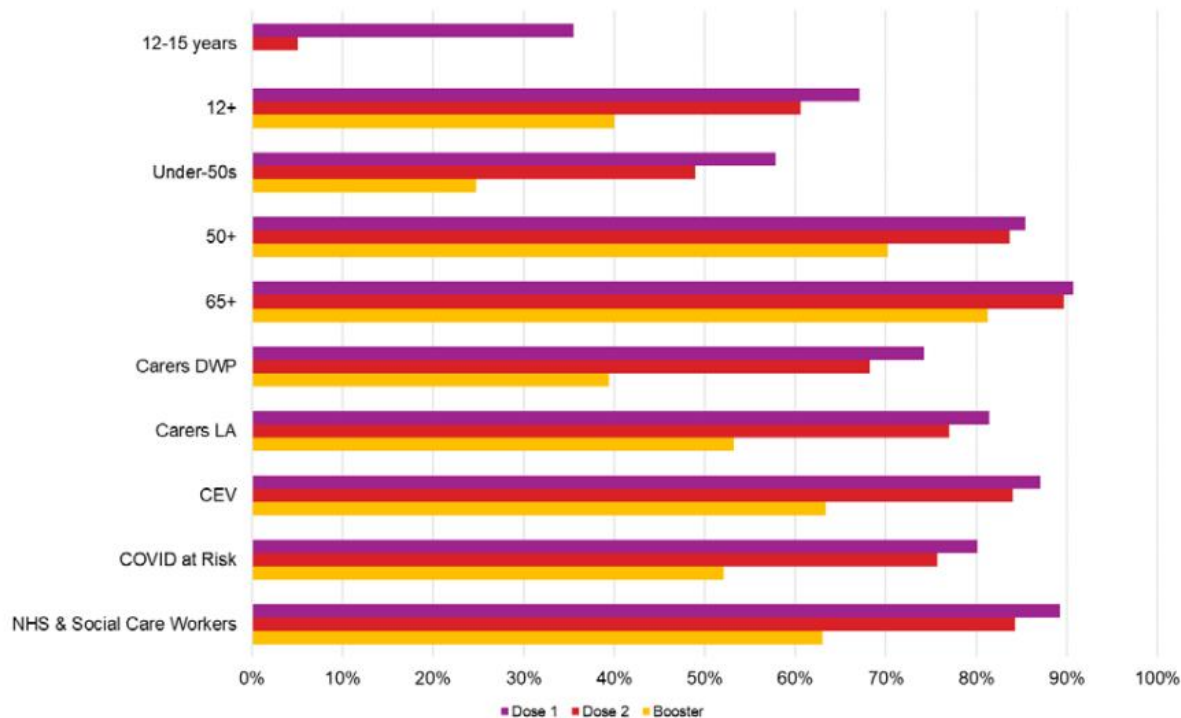
**A BOLDER
HEALTHIER
BIRMINGHAM**



Uptake in Birmingham Residents - Covid-19 1st, 2nd and Booster Doses

NIMS Data (Extracted 24/01/2022)

Vaccine 1st, 2nd and Booster % Uptake among Birmingham Residents



- Uptake of 1st, 2nd and booster doses remain consistently lower amongst under-50s compared to over-50s.
- Identified vulnerable groups including over-65s, clinically extremely vulnerable and Covid at-risk cohorts show good uptake of 1st and second doses, with booster uptake between 50% and 65%.
- Booster uptake in NHS and social care workers is lower compared to the uptake of first and second doses.



**A BOLDER
HEALTHIER
BIRMINGHAM**



Covid-19 vaccination - 1st Dose by Ward

NIMS Data (Extracted 24/01/2022)

	% uptake of 1st Dose of Covid-19 Vaccination (data extracted 24-01-22)				
Ward Name	Ward total uptake 12+	CEV	COVID at Risk	Carers - LA	Carers - DWP
Acoccks Green	68.2%	88.5%	81.5%	81.0%	80.3%
Allens Cross	75.4%	92.8%	84.0%	86.0%	75.0%
Alum Rock	53.1%	81.8%	74.7%	83.1%	70.7%
Aston	56.8%	81.9%	74.5%	81.2%	75.1%
Balsall Heath West	55.6%	81.0%	72.1%	64.3%	74.5%
Bartley Green	73.1%	88.5%	82.2%	82.9%	75.8%
Billesley	74.8%	90.8%	84.3%	82.7%	72.8%
Birchfield	53.0%	79.0%	70.6%	73.1%	67.3%
Bordesley & Highgate	52.9%	78.6%	70.4%	72.9%	68.5%
Bordesley Green	54.4%	82.4%	74.2%	74.2%	75.8%
Bournbrook & Selly Park	56.9%	89.2%	82.4%	77.4%	75.2%
Bournville & Cotteridge	78.6%	92.5%	88.4%	84.7%	72.8%
Brandwood & King's Heath	78.7%	91.3%	86.6%	90.7%	75.9%
Bromford & Hodge Hill	66.0%	86.7%	79.2%	83.4%	76.0%
Castle Vale	70.9%	91.5%	84.5%	80.8%	72.4%
Druids Heath & Monyhull	75.6%	92.4%	82.5%	89.7%	71.5%
Edgbaston	56.3%	86.6%	79.0%	80.7%	62.7%
Erdington	71.5%	90.6%	83.4%	83.1%	73.3%

	% uptake of 1st Dose of Covid-19 Vaccination (data extracted 24-01-22)				
Ward Name	Ward total uptake 12+	CEV	COVID at Risk	Carers - LA	Carers - DWP
Frankley Great Park	75.7%	89.9%	83.8%	80.6%	71.2%
Garretts Green	66.0%	87.2%	79.6%	83.8%	72.7%
Glebe Farm & Tile Cross	65.4%	84.7%	78.0%	82.0%	72.2%
Gravelly Hill	59.2%	87.2%	77.3%	82.0%	76.0%
Hall Green North	70.9%	89.7%	81.9%	79.7%	78.4%
Hall Green South	82.5%	93.5%	88.9%	91.8%	89.9%
Handsworth	56.0%	82.6%	72.6%	77.7%	71.1%
Handsworth Wood	66.6%	87.1%	80.7%	78.4%	74.2%
Harborne	68.8%	88.9%	83.3%	85.1%	67.9%
Heartlands	56.9%	83.0%	76.0%	81.6%	74.3%
Highters Heath	79.3%	92.8%	87.4%	88.8%	79.6%
Holyhead	49.4%	79.9%	68.8%	73.1%	59.6%
King's Norton North	79.1%	91.4%	84.4%	85.0%	68.3%
King's Norton South	72.0%	89.4%	80.7%	81.4%	67.6%
Kingstanding	69.9%	89.6%	81.8%	82.6%	74.9%
Ladywood	53.3%	78.3%	72.3%	69.9%	64.8%
Longbridge & West Heath	80.1%	94.0%	82.9%	87.2%	73.4%
Lozells	59.1%	85.0%	75.2%	75.0%	78.4%

Within this category, 75% or more of the ward have been vaccinated

Within this category, between 50% and 75% of the ward have been vaccinated

Within this category, less than 50% of the ward have been vaccinated

Covid-19 vaccination - 1st Dose by Ward

NIMS Data (Extracted 24/01/2022)

	% uptake of 1st Dose of Covid-19 Vaccination (data extracted 24-01-22)				
Ward Name	Ward total uptake 12+	CEV	COVID at Risk	Carers - LA	Carers - DWP
Moseley	72.9%	88.2%	81.1%	82.8%	75.2%
Nechells	51.2%	80.4%	72.6%	71.6%	71.5%
Newtown	48.9%	74.1%	66.6%	61.4%	67.3%
North Edgbaston	56.9%	82.3%	74.1%	74.6%	70.7%
Northfield	83.4%	93.4%	89.3%	89.7%	77.9%
Oscott	75.4%	90.6%	85.9%	80.3%	77.4%
Perry Barr	66.6%	87.6%	80.7%	82.4%	77.7%
Perry Common	70.1%	87.4%	80.2%	82.2%	75.2%
Pype Hayes	72.1%	90.4%	84.2%	79.5%	74.4%
Quinton	76.9%	90.1%	85.8%	83.7%	76.9%
Rubery & Rednal	77.1%	91.4%	83.5%	81.0%	70.6%
Shard End	72.0%	90.9%	83.4%	77.4%	72.5%
Sheldon	78.5%	91.5%	86.4%	87.7%	79.6%
Small Heath	58.8%	85.3%	78.7%	81.5%	77.7%
Soho & Jewellery Quarter	52.7%	78.4%	68.3%	72.9%	64.6%
South Yardley	75.3%	88.0%	84.6%	93.2%	79.7%
Sparkbrook & Balsall Heath East	55.8%	82.1%	72.0%	73.4%	73.5%
Sparkhill	58.3%	84.5%	75.2%	82.0%	78.8%

Within this category, 75% or more of the ward have been vaccinated

Within this category, between 50% and 75% of the ward have been vaccinated

Within this category, less than 50% of the ward have been vaccinated

	% uptake of 1st Dose of Covid-19 Vaccination (data extracted 24-01-22)				
Ward Name	Ward total uptake 12+	CEV	COVID at Risk	Carers - LA	Carers - DWP
Stirchley	77.6%	92.1%	86.5%	82.6%	73.2%
Stockland Green	61.2%	85.2%	76.6%	82.9%	75.1%
Sutton Four Oaks	89.6%	97.0%	94.4%	86.4%	82.1%
Sutton Mere Green	88.9%	95.3%	92.5%	91.9%	85.2%
Sutton Reddicap	80.9%	94.3%	88.1%	87.8%	78.1%
Sutton Roughley	87.7%	95.5%	92.7%	92.3%	83.2%
Sutton Trinity	86.9%	96.4%	92.4%	90.2%	78.9%
Sutton Vesey	86.6%	95.2%	90.9%	89.6%	82.9%
Sutton Walmley & Minworth	87.2%	95.7%	93.5%	86.5%	79.8%
Sutton Wylde Green	88.4%	95.6%	92.7%	95.7%	92.3%
Tyseley & Hay Mills	62.2%	87.4%	78.7%	82.1%	74.9%
Ward End	55.4%	81.5%	75.7%	77.6%	70.9%
Weoley & Selly Oak	68.7%	90.0%	81.3%	81.6%	73.2%
Yardley East	75.9%	92.0%	85.5%	87.8%	81.3%
Yardley West & Stechford	65.2%	86.8%	79.6%	84.5%	76.5%

Covid-19 vaccination - 2nd Dose by Ward

NIMS Data (Extracted 24/01/2022)

	% uptake of 2nd Dose of Covid-19 Vaccination (data extracted 24-01-22)				
Ward Name	Ward total uptake 12+	CEV	COVID at Risk	Carers - LA	Carers - DWP
Acoccks Green	61.4%	85.9%	77.0%	75.0%	72.4%
Allens Cross	68.8%	89.8%	80.5%	81.3%	70.6%
Alum Rock	44.3%	76.1%	68.2%	75.4%	64.4%
Aston	48.4%	78.8%	69.4%	75.7%	68.2%
Balsall Heath West	48.9%	77.6%	66.0%	59.1%	69.6%
Bartley Green	67.1%	86.3%	78.3%	80.6%	70.6%
Billesley	67.6%	87.5%	79.5%	77.6%	68.3%
Birchfield	45.7%	75.7%	65.0%	70.9%	62.2%
Bordesley & Highgate	45.8%	74.3%	64.4%	67.7%	59.9%
Bordesley Green	46.1%	78.2%	68.6%	70.5%	70.0%
Bournbrook & Selly Park	54.1%	87.4%	78.9%	71.0%	72.6%
Bournville & Cotteridge	73.4%	90.7%	84.7%	82.6%	64.5%
Brandwood & King's Heath	72.8%	87.9%	82.0%	88.0%	70.3%
Bromford & Hodge Hill	57.9%	83.3%	74.6%	79.3%	69.4%
Castle Vale	64.2%	88.6%	81.1%	78.3%	68.1%
Druids Heath & Monyhull	69.0%	89.2%	77.7%	81.6%	63.2%
Edgbaston	52.5%	85.4%	75.5%	82.5%	59.8%
Erdington	66.1%	87.6%	79.3%	80.0%	69.4%

Within this category, 75% or more of the ward have been vaccinated

Within this category, between 50% and 75% of the ward have been vaccinated

	% uptake of 2nd Dose of Covid-19 Vaccination (data extracted 24-01-22)				
Ward Name	Ward total uptake 12+	CEV	COVID at Risk	Carers - LA	Carers - DWP
Frankley Great Park	68.8%	87.5%	79.6%	77.5%	63.9%
Garretts Green	58.0%	84.3%	74.6%	76.2%	66.6%
Glebe Farm & Tile Cross	57.8%	80.5%	72.8%	75.3%	65.0%
Gravelly Hill	52.8%	83.8%	71.9%	71.9%	68.3%
Hall Green North	63.8%	87.1%	77.4%	75.8%	74.6%
Hall Green South	76.0%	91.9%	84.7%	84.5%	83.5%
Handsworth	48.0%	79.3%	67.5%	72.7%	64.1%
Handsworth Wood	60.4%	85.1%	77.3%	73.3%	69.4%
Harborne	64.7%	87.2%	80.1%	83.7%	61.5%
Heartlands	48.1%	78.6%	70.1%	77.6%	68.1%
Highters Heath	72.8%	90.3%	83.9%	87.5%	72.0%
Holyhead	42.7%	77.3%	64.8%	65.4%	53.5%
King's Norton North	72.9%	89.9%	81.5%	83.8%	62.3%
King's Norton South	65.3%	87.8%	76.8%	76.5%	63.0%
Kingstanding	62.6%	86.9%	77.5%	78.8%	69.5%
Ladywood	49.6%	75.4%	68.4%	68.0%	60.0%
Longbridge & West Heath	74.2%	92.6%	79.1%	86.1%	66.2%
Lozells	50.6%	82.1%	70.3%	72.0%	72.5%

Within this category, less than 50% of the ward have been vaccinated

Covid-19 vaccination - 2nd Dose by Ward

NIMS Data (Extracted 24/01/2022)

	% uptake of 2nd Dose of Covid-19 Vaccination (data extracted 24-01-22)				
Ward Name	Ward total uptake 12+	CEV	COVID at Risk	Carers - LA	Carers - DWP
Moseley	67.0%	84.6%	77.2%	75.8%	71.0%
Nechells	44.6%	77.0%	67.1%	65.1%	66.1%
Newtown	41.0%	68.1%	59.7%	55.4%	60.3%
North Edgbaston	50.9%	78.8%	69.0%	65.4%	63.4%
Northfield	77.8%	91.6%	86.3%	87.4%	74.2%
Oscott	69.3%	88.0%	81.6%	77.2%	72.1%
Perry Barr	60.6%	85.2%	77.1%	78.2%	72.8%
Perry Common	63.4%	85.1%	75.9%	79.1%	68.1%
Pype Hayes	66.0%	88.6%	80.6%	76.1%	69.9%
Quinton	71.1%	87.6%	83.0%	81.6%	70.6%
Rubery & Rednal	70.9%	89.0%	80.2%	81.0%	62.4%
Shard End	64.7%	88.1%	78.8%	73.7%	66.6%
Sheldon	72.2%	89.7%	83.1%	82.7%	73.8%
Small Heath	50.2%	81.0%	72.8%	75.9%	71.6%
Soho & Jewellery Quarter	46.9%	74.1%	62.6%	68.1%	59.6%
South Yardley	68.8%	85.7%	82.2%	89.8%	76.6%
Sparkbrook & Balsall Heath East	47.5%	76.2%	65.6%	67.2%	65.9%
Sparkhill	49.7%	79.9%	68.7%	75.8%	70.5%

Within this category, 75% or more of the ward have been vaccinated

Within this category, between 50% and 75% of the ward have been vaccinated

Within this category, less than 50% of the ward have been vaccinated

	% uptake of 2nd Dose of Covid-19 Vaccination (data extracted 24-01-22)				
Ward Name	Ward total uptake 12+	CEV	COVID at Risk	Carers - LA	Carers - DWP
Stirchley	72.3%	89.9%	83.6%	80.4%	71.6%
Stockland Green	54.4%	82.1%	71.4%	79.8%	68.5%
Sutton Four Oaks	84.2%	95.9%	92.7%	84.1%	82.1%
Sutton Mere Green	83.7%	94.7%	90.9%	91.9%	84.3%
Sutton Reddicap	75.1%	93.0%	85.2%	85.6%	72.1%
Sutton Roughley	82.3%	94.5%	91.3%	89.2%	77.2%
Sutton Trinity	81.8%	95.8%	90.9%	90.2%	73.7%
Sutton Vesey	81.4%	94.8%	88.8%	88.8%	79.4%
Sutton Walmley & Minworth	82.4%	94.4%	91.2%	84.7%	76.3%
Sutton Wylde Green	83.6%	94.1%	91.1%	93.5%	92.3%
Tyseley & Hay Mills	54.3%	83.9%	73.5%	77.1%	68.1%
Ward End	46.5%	76.6%	68.6%	68.4%	61.4%
Weoley & Selly Oak	63.1%	87.9%	77.4%	78.4%	68.6%
Yardley East	69.1%	88.3%	80.9%	83.3%	76.0%
Yardley West & Stechford	57.5%	83.8%	73.9%	76.4%	68.8%

Covid-19 vaccination - Booster Dose by Ward

NIMS Data (Extracted 24/01/2022)

	% uptake of Booster Dose of Covid Vaccination data extracted 24-01-22				
Ward Name	Ward total uptake 12+	CEV	COVID at Risk	Carers - LA	Carers - DWP
Acocks Green	39.8%	68.0%	54.4%	51.2%	44.1%
Allens Cross	50.9%	77.6%	63.6%	66.4%	49.7%
Alum Rock	15.8%	35.7%	27.8%	32.4%	25.1%
Aston	21.7%	51.5%	38.5%	42.4%	36.0%
Balsall Heath West	23.4%	49.9%	33.7%	32.2%	29.9%
Bartley Green	48.1%	73.2%	59.5%	59.5%	47.3%
Billesley	47.0%	70.8%	57.7%	53.7%	40.2%
Birchfield	21.9%	50.0%	36.7%	43.3%	30.2%
Bordesley & Highgate	22.7%	44.7%	35.3%	30.2%	22.3%
Bordesley Green	19.8%	43.1%	34.8%	34.1%	30.5%
Bournbrook & Selly Park	38.8%	74.1%	60.8%	56.5%	54.9%
Bournville & Cotteridge	59.9%	80.6%	71.0%	68.8%	45.3%
Brandwood & King's Heath	55.4%	71.5%	63.5%	68.9%	48.1%
Bromford & Hodge Hill	31.9%	55.7%	43.8%	47.6%	32.4%
Castle Vale	47.2%	78.5%	65.1%	56.7%	48.1%
Druids Heath & Monyhull	49.8%	73.2%	58.5%	66.7%	40.4%
Edgbaston	39.2%	73.2%	60.5%	59.6%	37.3%
Erdington	48.9%	75.8%	62.4%	68.1%	47.5%

	% uptake of Booster Dose of Covid Vaccination data extracted 24-01-22				
Ward Name	Ward total uptake 12+	CEV	COVID at Risk	Carers - LA	Carers - DWP
Frankley Great Park	48.9%	73.5%	58.7%	62.8%	40.3%
Garretts Green	35.3%	62.8%	50.3%	45.7%	40.0%
Glebe Farm & Tile Cross	34.2%	57.5%	46.8%	49.0%	35.7%
Gravelly Hill	32.7%	63.6%	49.7%	51.7%	45.4%
Hall Green North	39.1%	62.5%	49.3%	46.3%	39.0%
Hall Green South	57.0%	80.3%	66.8%	71.1%	62.0%
Handsworth	25.8%	56.1%	41.7%	46.0%	32.7%
Handsworth Wood	38.1%	64.5%	53.0%	60.2%	37.4%
Harborne	52.3%	75.6%	66.0%	69.5%	44.9%
Heartlands	22.2%	45.9%	36.7%	41.6%	27.4%
Highters Heath	52.8%	77.6%	63.1%	67.5%	47.1%
Holyhead	23.3%	56.6%	41.6%	50.0%	30.2%
King's Norton North	56.0%	77.8%	63.4%	73.8%	40.5%
King's Norton South	46.8%	74.3%	56.8%	51.0%	37.8%
Kingstanding	40.6%	69.2%	55.4%	52.3%	43.1%
Ladywood	31.5%	55.7%	48.0%	45.6%	36.1%
Longbridge & West Heath	55.9%	79.7%	60.5%	67.8%	45.8%
Lozells	22.3%	51.2%	38.3%	41.7%	37.0%

Within this category, 75% or more of the ward have been vaccinated

Within this category, between 50% and 75% of the ward have been vaccinated

Within this category, less than 50% of the ward have been vaccinated

Covid-19 vaccination - Booster Dose by Ward

NIMS Data (Extracted 24/01/2022)

Ward Name	% uptake of Booster Dose of Covid Vaccination data extracted 24-01-22				
	Ward total uptake 12+	CEV	COVID at Risk	Carers - LA	Carers - DWP
Moseley	48.0%	64.5%	52.5%	48.4%	33.7%
Nechells	22.3%	48.5%	37.8%	39.4%	32.4%
Newtown	18.6%	42.5%	31.9%	29.7%	31.8%
North Edgbaston	30.3%	59.0%	44.2%	44.6%	33.5%
Northfield	62.2%	83.5%	71.2%	77.0%	57.7%
Oscott	48.6%	76.8%	62.6%	57.5%	50.0%
Perry Barr	39.5%	67.4%	54.2%	52.9%	40.2%
Perry Common	42.9%	68.4%	54.4%	58.1%	45.1%
Pype Hayes	48.6%	73.2%	63.3%	60.7%	50.0%
Quinton	53.6%	74.2%	65.9%	67.3%	56.6%
Rubery & Rednal	52.7%	78.4%	61.3%	70.9%	40.4%
Shard End	46.0%	76.1%	61.7%	51.9%	46.0%
Sheldon	52.4%	77.7%	63.5%	64.8%	48.9%
Small Heath	21.2%	48.6%	37.0%	35.3%	33.8%
Soho & Jewellery Quarter	27.1%	49.2%	40.1%	43.6%	31.3%
South Yardley	47.4%	65.4%	60.0%	61.4%	48.2%
Sparkbrook & Balsall Heath East	18.7%	40.9%	29.5%	28.8%	22.6%
Sparkhill	20.9%	43.1%	31.1%	38.1%	28.8%

Ward Name	% uptake of Booster Dose of Covid Vaccination data extracted 24-01-22				
	Ward total uptake 12+	CEV	COVID at Risk	Carers - LA	Carers - DWP
Stirchley	55.2%	77.6%	66.0%	64.1%	52.6%
Stockland Green	33.2%	60.3%	48.4%	60.1%	41.0%
Sutton Four Oaks	71.6%	91.3%	81.9%	75.0%	75.0%
Sutton Mere Green	70.4%	91.2%	79.7%	79.0%	68.7%
Sutton Reddicap	59.5%	82.0%	69.7%	71.1%	51.7%
Sutton Roughley	68.9%	89.8%	81.5%	78.5%	60.4%
Sutton Trinity	68.7%	88.3%	80.2%	82.4%	63.2%
Sutton Vesey	67.5%	88.0%	76.8%	76.9%	65.7%
Sutton Walmley & Minworth	67.4%	85.3%	77.6%	72.1%	57.8%
Sutton Wylde Green	71.5%	88.8%	80.0%	84.8%	88.5%
Tyseley & Hay Mills	29.9%	56.6%	45.7%	50.7%	36.7%
Ward End	18.3%	39.7%	31.0%	41.8%	27.6%
Weoley & Selly Oak	45.6%	74.0%	57.5%	61.6%	43.1%
Yardley East	46.1%	69.5%	56.6%	57.8%	40.8%
Yardley West & Stechford	31.8%	56.5%	46.6%	51.8%	34.8%

Within this category, 75% or more of the ward have been vaccinated

Within this category, between 50% and 75% of the ward have been vaccinated

Within this category, less than 50% of the ward have been vaccinated

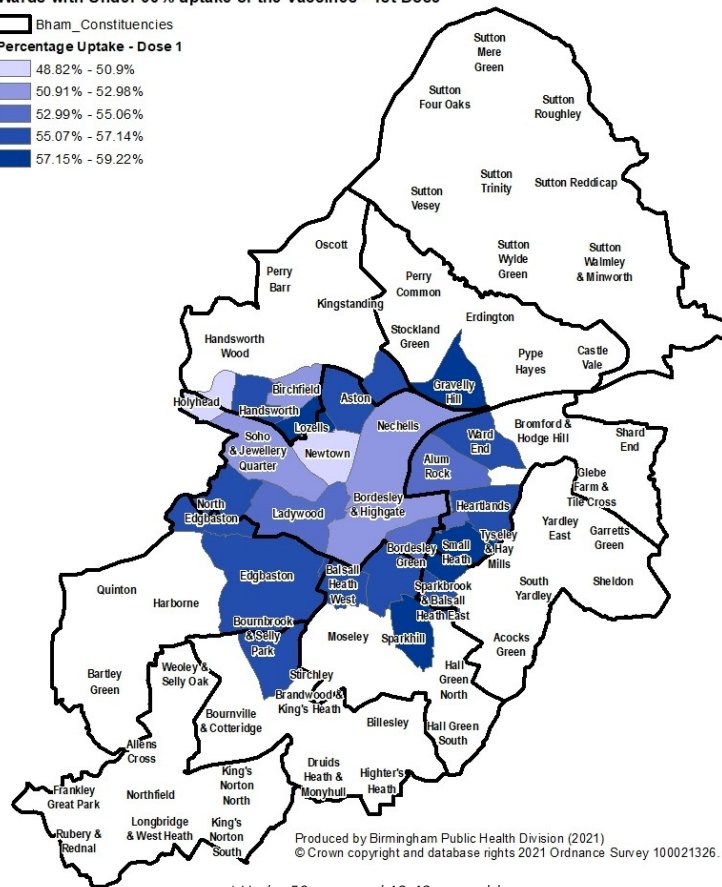
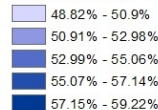
Covid-19 Vaccine Uptake 1st Dose aged 12+ (wards with less than 60% uptake)

NIMS Data (Extracted 24/01/2022)

Wards with Under 60% uptake of the Vaccines - 1st Dose

□ Bham_Constituencies

Percentage Uptake - Dose 1



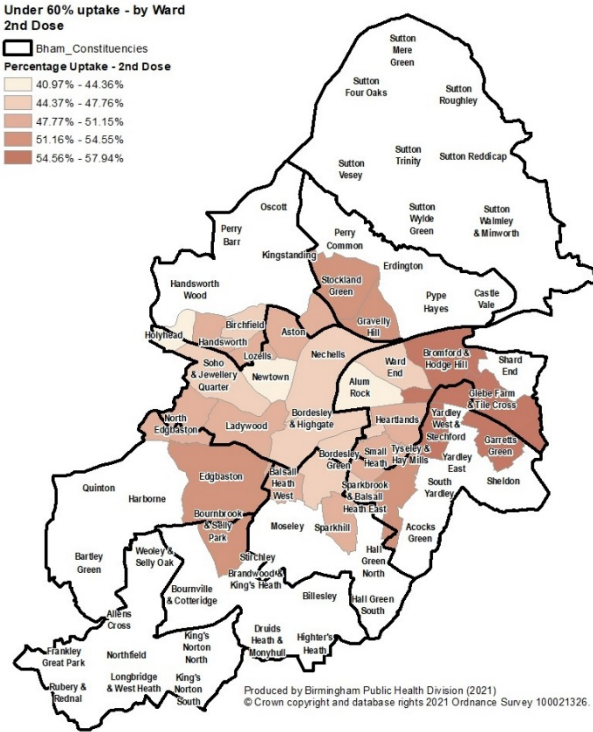
Produced by Birmingham Public Health Division (2021)
© Crown copyright and database rights 2021 Ordnance Survey 100021326.

* Under 50s are aged 12-49 years old

Ward Name	Total Uptake 12+	Total Uptake 16+	Total Uptake (under 50*)	Total Uptake 50+
Newtown	48.9%	51.1%	44.2%	65.7%
Holyhead	49.4%	51.1%	43.3%	65.2%
Nechells	51.2%	54.0%	44.5%	74.9%
Soho & Jewellery Quarter	52.7%	54.5%	48.3%	67.7%
Bordesley & Highgate	52.9%	55.4%	48.0%	72.1%
Birchfield	53.0%	55.1%	46.3%	69.5%
Alum Rock	53.1%	56.6%	46.6%	74.4%
Ladywood	53.3%	54.5%	49.9%	69.6%
Bordesley Green	54.4%	57.3%	48.4%	72.4%
Ward End	55.4%	59.4%	48.1%	78.0%
Balsall Heath West	55.6%	58.4%	47.3%	77.4%
Sparkbrook & Balsall Heath East	55.8%	58.8%	49.7%	74.4%
Handsworth	56.0%	57.9%	50.0%	71.2%
Edgbaston	56.3%	56.5%	47.9%	82.8%
Aston	56.8%	59.2%	51.2%	73.5%
Heartlands	56.9%	60.6%	50.0%	77.9%
North Edgbaston	56.9%	58.5%	50.5%	73.3%
Bournbrook & Selly Park	56.9%	57.1%	52.5%	85.8%
Sparkhill	58.3%	61.1%	51.5%	77.8%
Small Heath	58.8%	62.1%	52.2%	78.6%
Lozells	59.1%	61.4%	54.3%	73.7%
Gravelly Hill	59.2%	61.5%	49.2%	79.6%

The less than 60% uptake of the first dose appears to be concentrated in the centre of Birmingham.

Covid-19 Vaccine Uptake 2nd Dose, aged 12+ (wards with less than 60% uptake) NIMS Data (Extracted 24/01/2022)



As with 1st dose, areas with less than 60% uptake of the 2nd dose appear to be concentrated in the centre of Birmingham.

Ward Name	Total Uptake 12+	Total Uptake 16+	Total Uptake (under 50*)	Total Uptake 50+
Newtown	41.0%	44.3%	35.2%	61.8%
Holyhead	42.7%	46.0%	34.8%	63.1%
Alum Rock	44.3%	48.9%	36.3%	70.8%
Nechells	44.6%	48.2%	37.0%	71.7%
Birchfield	45.7%	49.2%	37.2%	66.8%
Bordesley & Highgate	45.8%	49.5%	39.9%	69.3%
Bordesley Green	46.1%	50.4%	38.3%	69.5%
Ward End	46.5%	51.8%	37.5%	74.6%
Soho & Jewellery Quarter	46.9%	49.6%	41.6%	64.8%
Sparkbrook & Balsall Heath East	47.5%	51.8%	39.8%	70.9%
Handsworth	48.0%	51.5%	39.7%	68.9%
Heartlands	48.1%	53.5%	39.4%	74.9%
Aston	48.4%	52.4%	41.0%	70.7%
Balsall Heath West	48.9%	52.9%	39.4%	74.1%
Ladywood	49.6%	51.2%	45.9%	67.4%
Sparkhill	49.7%	54.1%	41.0%	74.6%
Small Heath	50.2%	55.1%	41.6%	76.0%
Lozells	50.6%	55.0%	44.1%	70.5%
North Edgbaston	50.9%	53.6%	43.1%	71.3%
Edgbaston	52.5%	54.3%	43.3%	81.7%
Gravelly Hill	52.8%	56.2%	40.9%	77.1%
Bournbrook & Selly Park	54.1%	55.0%	49.4%	84.8%
Tyseley & Hay Mills	54.3%	59.0%	43.9%	79.2%
Stockland Green	54.4%	58.0%	41.9%	79.4%
Yardley West & Stechford	57.5%	62.5%	46.4%	82.8%
Glebe Farm & Tile Cross	57.8%	62.5%	44.8%	83.7%
Bromford & Hodge Hill	57.9%	63.1%	45.0%	85.1%
Garretts Green	58.0%	62.8%	45.4%	83.5%

* Under 50s are aged 12-49 years old

Covid-19 vaccine Uptake Booster Dose, aged 12+

(wards with less than 60% uptake)

NIMS Data (Extracted 24/01/2022)

Wards with Under 60% uptake of Vaccinations - Booster Dose

□ Bham Constituencies

Percentage Uptake - Booster Dose

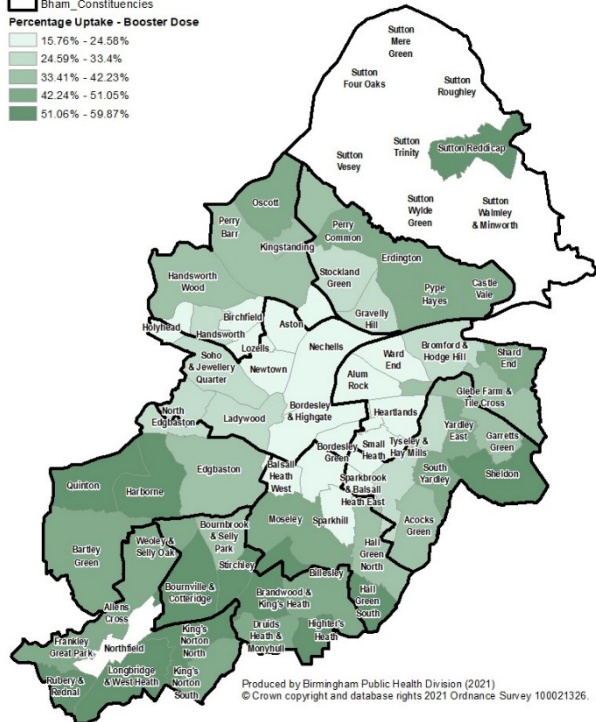
15.76% - 24.58%

24.59% - 33.4%

33.41% - 42.23%

42.24% - 51.05%

51.06% - 59.87%



Produced by Birmingham Public Health Division (2021)
© Crown copyright and database rights 2021 Ordnance Survey 100021326.

With the exception of the Northern/more affluent areas, less than 60% booster uptake is widespread in other parts of Birmingham. Also note low uptakes in Sutton Reddicap and high booster uptake in Northfield in contrast to their surrounding areas.

* Under 50s are aged 12-49 years old

Ward Name	Total Uptake 12+	Total Uptake 16+	Total Uptake (under 50*)	Total Uptake 50+
Alum Rock	15.8%	17.4%	9.4%	37.2%
Ward End	18.3%	20.4%	9.5%	45.9%
Newtown	18.6%	20.2%	12.7%	39.9%
Sparkbrook & Balsall Heath East	18.7%	20.4%	11.3%	41.4%
Bordesley Green	19.8%	21.7%	12.4%	42.0%
Sparkhill	20.9%	22.8%	12.5%	45.2%
Small Heath	21.2%	23.3%	13.1%	45.4%
Aston	21.7%	23.7%	13.5%	46.4%
Birchfield	21.9%	23.7%	12.5%	45.4%
Heartlands	22.2%	24.8%	13.2%	50.1%
Nechells	22.3%	24.1%	14.4%	50.9%
Lozells	22.3%	24.4%	15.4%	43.7%
Bordesley & Highgate	22.7%	24.6%	16.7%	47.0%
Holyhead	23.3%	25.3%	14.1%	47.6%
Balsall Heath West	23.4%	25.3%	13.8%	48.6%
Handsworth	25.8%	27.8%	16.2%	50.2%
Soho & Jewellery Quarter	27.1%	28.7%	21.1%	47.5%
Tyseley & Hay Mills	29.9%	32.7%	16.6%	61.8%
North Edgbaston	30.3%	32.0%	20.4%	55.8%
Ladywood	31.5%	32.5%	26.7%	54.5%
Yardley West & Stechford	31.8%	34.8%	17.0%	65.6%
Bromford & Hodge Hill	31.9%	35.0%	16.1%	65.3%
Gravelly Hill	32.7%	34.8%	18.3%	62.0%
Stockland Green	33.2%	35.5%	18.0%	63.8%
Glebe Farm & Tile Cross	34.2%	37.2%	17.5%	67.5%
Garretts Green	35.3%	38.5%	19.0%	68.4%
Handsworth Wood	38.1%	40.5%	22.1%	66.4%
Bournbrook & Selly Park	38.8%	39.6%	33.1%	76.3%
Hall Green North	39.1%	42.4%	23.3%	70.9%
Edgbaston	39.2%	40.8%	28.1%	74.4%
Perry Barr	39.5%	42.1%	21.0%	70.5%
Acoc's Green	39.8%	42.8%	23.2%	70.2%
Kingstanding	40.6%	43.8%	22.0%	70.9%
Perry Common	42.9%	46.0%	23.9%	72.9%
Weoley & Selly Oak	45.6%	48.9%	29.0%	75.8%
Shard End	46.0%	49.2%	25.4%	78.1%
Yardley East	46.1%	49.2%	24.1%	76.5%
King's Norton South	46.8%	50.5%	28.3%	76.0%
Billesley	47.0%	50.5%	29.0%	75.3%
Castle Vale	47.2%	50.7%	25.9%	78.8%
South Yardley	47.4%	50.8%	28.7%	76.4%
Moseley	48.0%	50.7%	33.3%	71.5%
Bartley Green	48.1%	51.4%	28.6%	77.5%
Oscott	48.6%	51.8%	28.4%	77.6%
Pype Hayes	48.6%	52.0%	29.9%	76.3%
Frankley Great Park	48.9%	52.7%	31.0%	78.2%
Erdington	48.9%	51.7%	30.1%	77.1%
Druids Heath & Monyhull	49.8%	53.1%	30.9%	77.1%
Allens Cross	50.9%	54.7%	32.8%	79.3%
Harborne	52.3%	55.2%	39.9%	77.9%
Sheldon	52.4%	55.5%	30.3%	81.1%
Rubery & Rednal	52.7%	56.2%	33.2%	81.1%
Highters Heath	52.8%	56.2%	32.5%	79.9%
Quinton	53.6%	56.9%	36.3%	79.0%
Stirchley	55.2%	58.4%	42.9%	77.6%
Brandwood & King's Heath	55.4%	58.9%	39.5%	79.0%
Longbridge & West Heath	55.9%	59.1%	35.6%	82.3%
King's Norton North	56.0%	60.1%	35.9%	82.6%
Hall Green South	57.0%	60.9%	37.1%	83.7%
Sutton Reddicap	59.5%	63.2%	39.2%	85.5%
Bournville & Cotteridge	59.9%	63.4%	42.7%	84.3%

Covid-19 Vaccine Uptake (1st Dose) by Ethnicity in Lowest 10 Wards -

NIMS Data (Extracted 24/01/2022)

Ethnic Group	% uptake of 1st dose of Covid vaccination data extracted 24/01/2022									
	Newtown	Holyhead	Nechells	Soho & Jewellery Quarter	Bordesley & Highgate	Birchfield	Alum Rock	Ladywood	Bordesley Green	Ward End
Not recorded	20.5%	18.5%	23.1%	18.0%	33.3%	23.7%	24.9%	27.3%	30.7%	30.3%
African	50.6%	49.7%	53.0%	54.6%	48.9%	52.2%	45.4%	52.8%	47.3%	54.3%
Any other Asian background	57.7%	61.2%	56.9%	56.4%	51.6%	57.3%	53.6%	56.5%	57.4%	59.6%
Any other Black background	44.0%	34.5%	49.3%	41.6%	49.7%	39.4%	44.8%	44.4%	46.7%	38.2%
Any other ethnic group	50.2%	43.5%	46.0%	52.0%	49.2%	50.5%	44.2%	51.8%	42.9%	43.1%
Any other mixed background	43.5%	36.2%	37.9%	50.9%	35.0%	37.1%	37.4%	53.7%	44.0%	46.3%
Any other White background	44.0%	13.6%	42.4%	38.8%	40.2%	30.2%	11.8%	49.6%	19.0%	14.0%
Arab	55.6%	50.0%	50.0%	63.6%	28.2%	71.4%	58.3%	50.9%	33.3%	55.6%
Bangladeshi or British Bangladeshi	73.7%	73.6%	69.6%	68.9%	76.1%	72.6%	71.5%	67.2%	72.7%	76.6%
British, Mixed British	68.8%	65.4%	75.4%	76.5%	72.5%	67.0%	70.7%	80.1%	69.8%	78.0%
Caribbean	39.8%	42.2%	47.5%	39.0%	47.2%	42.7%	54.0%	43.5%	50.3%	48.1%
Chinese	26.3%	73.9%	28.7%	39.4%	48.6%	48.1%	44.4%	39.7%	75.0%	100.0%
Indian or British Indian	53.0%	70.5%	46.0%	71.0%	66.7%	69.0%	62.6%	60.4%	59.9%	69.5%
Irish	69.3%	84.1%	76.6%	73.5%	68.5%	61.7%	75.6%	65.5%	75.4%	88.6%
Pakistani or British Pakistani	55.8%	62.9%	61.7%	60.4%	61.2%	61.9%	60.0%	66.2%	62.2%	61.4%
Traveller	0.0%	0.0%	0.0%	10.0%	0.0%	0.0%	0.9%	0.0%	7.7%	0.0%
White and Asian	42.1%	46.9%	58.0%	51.2%	51.9%	50.0%	45.7%	53.8%	25.7%	37.0%
White and Black African	43.9%	48.6%	55.0%	53.5%	54.9%	48.5%	51.0%	62.2%	48.6%	56.8%
White and Black Caribbean	26.8%	37.9%	39.5%	41.0%	30.1%	39.4%	43.9%	34.3%	34.5%	32.7%

Within this category, 75% or more of the ward have been vaccinated

Within this category, between 50% and 75% of the ward have been vaccinated

Within this category, less than 50% of the ward have been vaccinated

Covid-19 Vaccine Uptake (2nd Dose) by Ethnicity in Lowest 10 Wards -

NIMS Data (Extracted 24/01/2022)

Ethnic Group	% uptake of 2nd dose of Covid vaccination data extracted 24/01/2022									
	Newtown	Holyhead	Alum Rock	Nechells	Birchfield	Bordesley & Highgate	Bordesley Green	Ward End	Soho & Jewellery Quarter	Sparkbrook & Balsall Heath East
Not recorded	16.2%	15.5%	19.1%	21.0%	19.0%	27.8%	24.6%	26.0%	15.8%	23.4%
African	40.4%	39.3%	36.8%	43.7%	43.5%	39.9%	38.0%	45.0%	45.5%	36.2%
Any other Asian background	49.0%	51.3%	43.7%	49.6%	48.3%	45.5%	48.8%	50.1%	48.8%	43.7%
Any other Black background	36.2%	30.7%	37.1%	38.9%	35.0%	39.7%	36.6%	30.3%	33.7%	37.7%
Any other ethnic group	44.3%	37.3%	36.0%	38.7%	42.3%	42.7%	34.8%	36.7%	46.2%	33.9%
Any other mixed background	38.0%	29.1%	32.1%	31.3%	28.9%	28.1%	32.0%	40.7%	43.8%	32.8%
Any other White background	39.2%	10.6%	10.2%	38.4%	26.3%	36.7%	16.7%	11.4%	35.2%	27.5%
Arab	50.0%	50.0%	41.7%	50.0%	71.4%	19.4%	31.4%	55.6%	54.5%	36.4%
Bangladeshi or British Bangladeshi	60.2%	60.8%	61.5%	58.0%	62.7%	64.9%	63.7%	63.5%	61.2%	61.5%
British, Mixed British	61.2%	58.5%	65.1%	69.8%	60.0%	66.5%	62.7%	70.0%	71.1%	64.0%
Caribbean	34.5%	39.2%	48.7%	43.3%	38.4%	42.7%	47.2%	43.7%	34.8%	46.4%
Chinese	25.8%	69.6%	44.4%	26.8%	43.4%	46.3%	70.0%	91.7%	37.7%	53.7%
Indian or British Indian	48.4%	62.8%	57.2%	41.6%	63.5%	61.5%	51.0%	61.7%	63.7%	68.7%
Irish	64.0%	81.8%	73.2%	75.7%	59.6%	64.8%	73.7%	80.0%	67.5%	76.7%
Pakistani or British Pakistani	42.8%	51.6%	50.0%	51.6%	51.5%	51.0%	52.6%	50.4%	50.7%	51.2%
Traveller	0.0%	0.0%	0.9%	0.0%	0.0%	0.0%	7.7%	0.0%	10.0%	0.0%
White and Asian	39.5%	37.5%	34.6%	42.0%	33.3%	41.6%	20.0%	34.8%	44.8%	32.7%
White and Black African	34.4%	29.7%	38.8%	49.5%	42.4%	44.0%	37.1%	45.9%	39.4%	46.5%
White and Black Caribbean	20.7%	30.0%	33.3%	31.9%	35.9%	25.6%	32.7%	21.2%	33.4%	42.9%

Within this category, 75% or more of the ward have been vaccinated

Within this category, between 50% and 75% of the ward have been vaccinated

Within this category, less than 50% of the ward have been vaccinated



**A BOLDER
HEALTHIER
BIRMINGHAM**



Covid-19 Vaccine Uptake (Booster Dose) by Ethnicity in Lowest 10 Wards -

NIMS Data (Extracted 24/01/2022)

Ethnic Group	% uptake of booster dose of Covid vaccination data extracted 24/01/2022									
	Alum Rock	Ward End	Newtown	Sparkbrook & Balsall Heath East	Bordesley Green	Sparkhill	Small Heath	Aston	Birchfield	Heartlands
Not recorded	6.4%	12.8%	6.8%	8.2%	10.6%	7.8%	17.2%	6.8%	7.6%	12.1%
African	9.4%	13.4%	11.0%	9.2%	10.0%	15.0%	7.9%	12.1%	15.8%	13.1%
Any other Asian background	13.5%	14.7%	20.9%	15.6%	17.8%	19.3%	18.3%	16.0%	20.2%	21.0%
Any other Black background	8.8%	8.8%	10.0%	11.0%	8.9%	9.3%	7.0%	16.7%	11.0%	10.5%
Any other ethnic group	12.8%	12.6%	19.0%	9.1%	10.9%	12.2%	8.9%	14.9%	17.1%	13.4%
Any other mixed background	11.5%	13.9%	17.6%	12.6%	12.8%	11.0%	15.7%	18.0%	13.4%	19.8%
Any other White background	4.8%	5.5%	19.7%	12.7%	9.7%	12.6%	10.8%	10.1%	13.4%	7.4%
Arab	20.8%	22.2%	16.7%	10.3%	7.8%	14.3%	15.2%	5.3%	28.6%	10.5%
Bangladeshi or British Bangladeshi	29.9%	25.2%	28.0%	29.0%	32.2%	28.1%	33.1%	31.1%	29.1%	34.1%
British, Mixed British	44.8%	52.8%	42.7%	45.7%	45.6%	50.7%	49.4%	38.7%	41.1%	52.7%
Caribbean	29.5%	24.8%	18.2%	28.3%	25.7%	33.8%	34.1%	24.9%	21.8%	26.8%
Chinese	27.8%	83.3%	19.3%	41.5%	50.0%	51.2%	35.7%	21.8%	32.1%	50.0%
Indian or British Indian	29.3%	27.3%	31.7%	46.8%	32.8%	47.2%	38.5%	34.9%	41.5%	34.0%
Irish	46.3%	65.7%	54.7%	62.0%	66.7%	70.5%	59.5%	49.1%	42.6%	73.2%
Pakistani or British Pakistani	15.8%	14.4%	15.2%	15.8%	19.6%	18.5%	20.4%	20.5%	18.7%	20.4%
Traveller	0.9%	0.0%	0.0%	0.0%	0.0%	0.0%	25.0%	0.0%	0.0%	0.0%
White and Asian	12.3%	13.0%	26.3%	12.7%	8.6%	15.0%	5.3%	10.5%	16.7%	11.5%
White and Black African	10.2%	16.2%	8.9%	18.3%	12.9%	15.2%	7.7%	12.9%	10.6%	9.1%
White and Black Caribbean	14.0%	7.7%	9.5%	26.2%	27.3%	34.0%	16.0%	14.2%	17.6%	19.4%

Within this category, 75% or more of the ward have been vaccinated

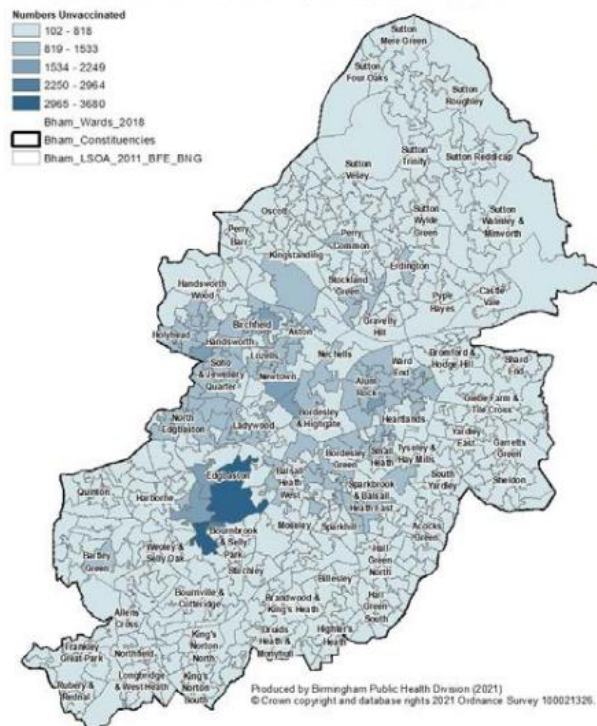
Within this category, between 50% and 75% of the ward have been vaccinated

Within this category, less than 50% of the ward have been vaccinated

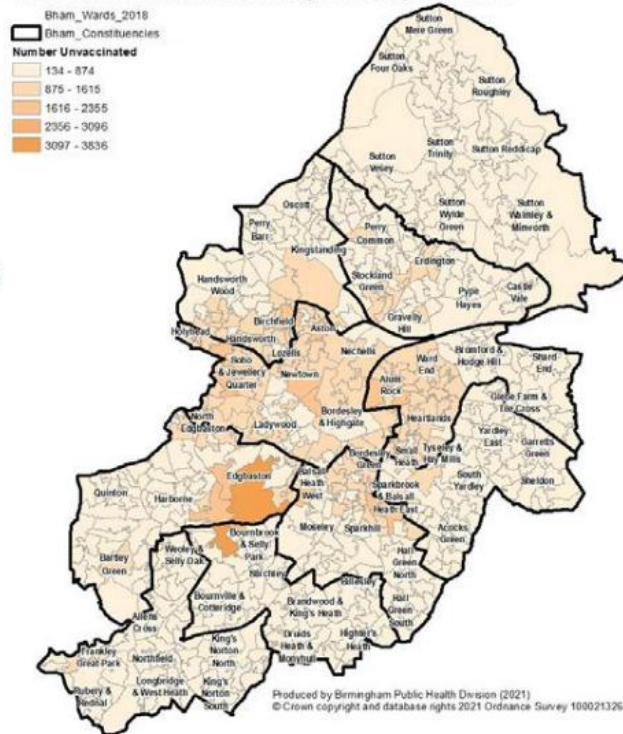
Numbers of unvaccinated by LSOA, 1st, 2nd and booster doses

NIMS Data (Extracted 24/01/2022)

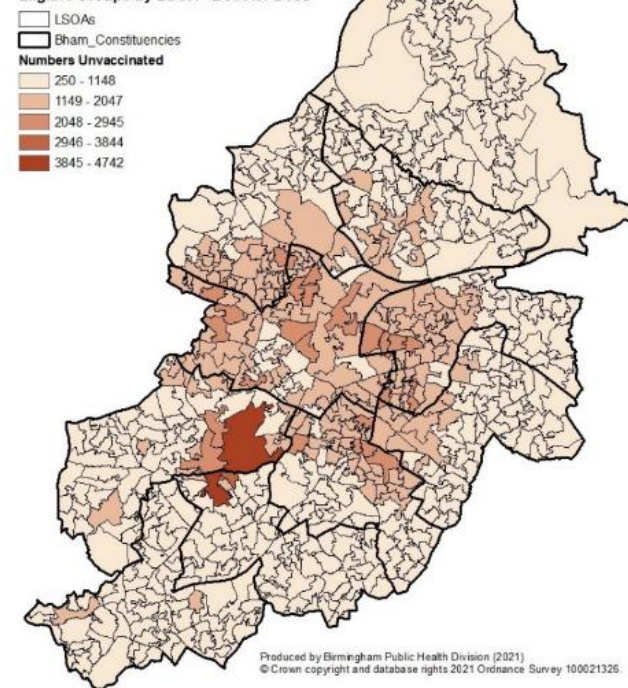
Number of Unvaccinated Individuals from Eligible Groups by LSOA - 1st Dose



Number of Unvaccinated Individuals from Eligible Groups by LSOA - 2nd Dose



Number of Unvaccinated Individuals from Eligible Groups by LSOA - Booster Dose



The largest concentration of unvaccinated individuals appear to be concentrated in the Edgbaston area, which has a large student population.

Birmingham Priority Age Group Not Vaccinated 1st, 2nd and Booster Doses

NHS NIMS Extracted 24/01/2022

Priority Group	Eligible Count	Not Vaccinated First Dose	Vaccinated Percentage First Dose	Not Vaccinated Second Dose	Vaccinated Percentage Second Dose
12 - 15	72,059	46,449	35.5%	68,407	5.1%
16 - 17	34,109	18,582	45.5%	24,872	27.1%
18 - 29	231,785	102,784	55.7%	120,055	48.2%
30 - 39	208,415	83,761	59.8%	95,046	54.4%
40 - 49	172,267	51,532	70.1%	58,393	66.1%
50 - 54	78,087	16,535	78.8%	18,786	75.9%
55 - 59	69,984	13,055	81.3%	14,579	79.2%
60 - 64	58,102	8,801	84.9%	9,815	83.1%
65 - 69	45,925	5,596	87.8%	6,219	86.5%
70 - 74	38,553	3,381	91.2%	3,708	90.4%
75 - 79	30,036	2,130	92.9%	2,378	92.1%
80+	42,980	3,568	91.7%	3,982	90.7%

Priority Group	Eligible Count (Booster Dose)	Not Vaccinated Booster Dose	Vaccinated Percentage Booster
16 - 17	34,109	33,233	2.6%
18 - 29	231,785	183,888	20.7%
30 - 39	208,415	150,231	27.9%
40 - 49	172,267	101,169	41.3%
50 - 54	78,087	34,966	55.2%
55 - 59	69,984	26,058	62.8%
60 - 64	58,102	17,679	69.6%
65 - 69	45,925	11,024	76.0%
70 - 74	38,553	6,642	82.8%
75 - 79	30,036	4,308	85.7%
80+	42,980	7,566	82.4%

- Uptake of 1st dose remains consistently lower amongst under-50s compared to over-50s.
- The numbers of unvaccinated individuals reflects this , with more than half of all unvaccinated individuals aged under 40.
- Booster uptake is also low in younger age groups, although this is partly due to eligibility - requiring 1st and 2nd dose before being eligible for a booster.



**A BOLDER
HEALTHIER
BIRMINGHAM**



Ongoing Local Actions to Improve Vaccine Uptake

The NHS, in collaboration with BCC continues to expand access to the vaccination programme:

- **Social media messages** have also been targeted promoting the vaccine and its benefits, including information about walk-in locations across Birmingham. For example, one of the commissioned providers - CommPlus delivered some of their community engagement on their Facebook page promoting the BSL videos on 'Vaccine Awareness for 12-15-year-olds'.
- **"JabCab"** campaign in partnership with the NHS and TOA Taxis offers free taxis targeted at residents with mobility issues, taxis will take residents to their nearest vaccination centre.
- **Community Vaccine Champions** programme - funded by the Department for Levelling Up Housing and Communities. Design and planned roll-out targeting the 10 Wards with the lowest vaccine uptakes.
- **Disseminate relevant information via our existing established networks** - commissioned engagement providers, Covid Community Champions and faith groups.
- **Deployment of multi-cultural street teams** carrying out face-to-face engagement in six lowest uptake wards, along with Sutton Walmley/Minworth, New Street Station and the Bull Ring.



**A BOLDER
HEALTHIER
BIRMINGHAM**



Birmingham
City Council



For more information please visit
www.birmingham.gov.uk/commonwealth2022

