

## YARDLEY DISTRICT

## Child Health Profile August 2015



### Key information:

- In 2013, the under 20 population of Yardley district was 32,639; this represents 10% of Birmingham's under 20 population. 29.9% of the district population are under 20 (Birmingham 29%, England 24%)
- 65.4% of Yardley's population are in the most deprived 20% of areas in England
- During 2011/13 Yardley district's under 20 death rate was 64.5% higher than the rate for England (Birmingham was 59.7% higher than England)
- Infant mortality is one area of concern: the district rate was 6.5 per 1,000 live births during 2011/13; this compares to 4.0 nationally and 7.4 for Birmingham.
- The 2011 census showed that 48.5% of the districts under 20 population is made up of BME groups (55.3% Birmingham, 19% England)

The spine chart below is a graphical interpretation of the position of Yardley district according to important child health indicators. The chart portrays Yardley's value (shown by a coloured circle) against the spread of values for all Birmingham districts (the grey horizontal bars) compared to a benchmark of either the England or Birmingham average (the central black line). The circle for Yardley is coloured red for those indicators where Yardley's value is significantly worse than the benchmark, green for indicators where Yardley is significantly better than the benchmark and amber where it is similar to the benchmark. In addition, some indicators are coloured light or dark blue. These are indicators where a value judgement cannot be made about whether a high value is good or bad. For example high diabetes prevalence August indicate poor levels of health in the case of high numbers of people with diabetes; alternatively, it could indicate good performance in primary care if GPs are good at identifying and recording cases of diabetes.

## Yardley Children's District 2014 Spine

### Key:

- Significantly better than England average
- Not significantly different from England average
- Significantly worse than England average
- No significance can be calculated
- Significantly lower than the England average\*
- Significantly higher than the England average\*



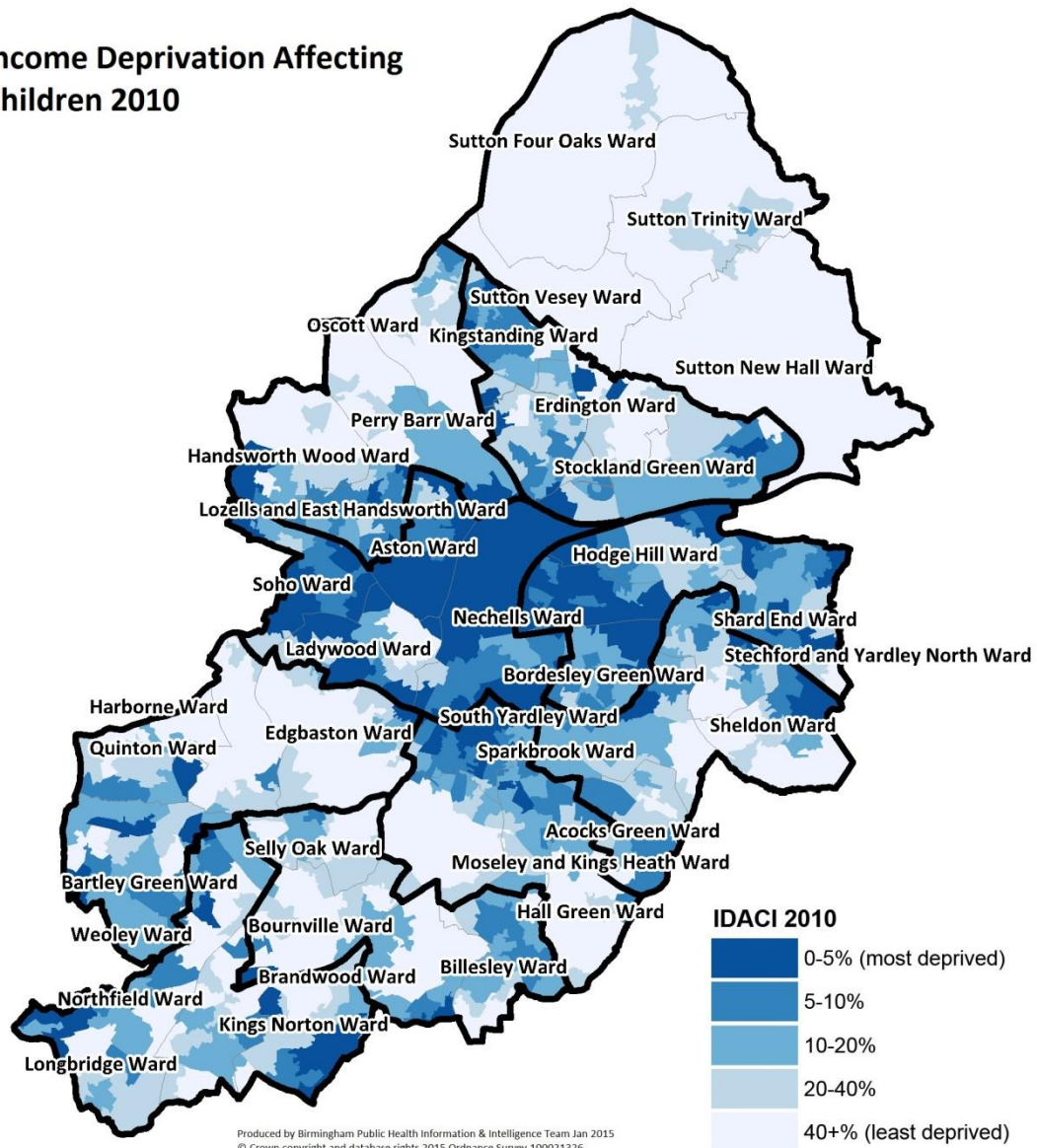
Indicator	Yardley Number	Yardley Stat	B'ham Avg	Eng Avg	District Range
1 Percentage of Children in Poverty 2012	8,560	29.8	29.9	19.2	
2 Early years readiness 2013/14	864	55.0	56.0	60.0	
2 Key Stage 1 L2+ Reading 2013/14	1,406	87.0	88.0	90.0	
2 Key Stage 1 L2+ Writing 2013/14	1,341	83.0	84.0	86.0	
2 Key Stage 1 L2+ Maths 2013/14	1,471	91.0	90.0	92.0	
2 Key Stage 2 L4+ Reading 2013/14	1,160	87.0	86.0	89.0	
2 Key Stage 2 L4+ Writing 2013/14	1,093	82.0	83.0	85.0	
2 Key Stage 2 L4+ Maths 2013/14	1,093	82.0	82.0	86.0	
2 Key Stage 4 Five GCSEs A* to C inc. Maths/English 2013/14	565	58.0	64.0	65.0	
3 Youth Unemployment (NEETS) 2013	253	8.8	6.5	5.3	
4 Excess weight 4-5 year olds 2013/14	370	24.1	23.2	22.5	
4 Excess weight 10-11 year olds 2013/14	517	39.2	38.3	33.5	
5 A & E attendances crude rates amongst 0 - 4 yrs old 2013/14	4,904	546.9	561.3	510.8	
5 Injuries emergency admissions crude rates 14 and under 2013/14	227	90.6	99.3	103.8	
5 Asthma emergency admissions crude rates Under 19 2013/14	n/a	376.8	382.5	221.4	
5 Alcohol Specific Admissions rates 2011/12 to 2013/14 (U18)	n/a	36.4	26.5	44.9	
6 Mortality from all causes (U20) 2011/2013	58	164.5	159.5	100.0	
7 New entrants to the Criminal Justice System 2013/14	70	576.6	507.3	431.0	

### Sources of information:

- % of children age under 16 living in families in receipt of out of work benefits or tax credits where their reported income is less than 60% median income, 2012. Supplied by Department of Works & Pensions
- Education and skills breakdowns (Early years /Key stage 1, 2, and 4 2013/14) respectively. Based on numbers of children achieving identified standards set nationally. Obtained from CYPF information management team at Birmingham City Council
- Youth unemployment (NEETS) 2013. Percentage of 16 to 19 years not in work, or education. Obtained from CYPF information management team at Birmingham City Council
- The combined % of those children in reception classes and then again in Year 6 who when weighed were assessed as Obese or overweight by their BMI. Children are measured yearly. Obtained from the National Child Measurement Programme annually
- Accident and Emergency attendances 0 – 4 years old 2013/14, additionally emergency inpatients for injuries, asthma or alcohol rates per 10,000. Source: SUS Midlands and Lancashire CSU. At an LA level these figures can be viewed on CHIMAt children profiles
- Death rates for under 20s 2011/13 from any cause. Source: Office of National Statistic
- New entrants into the Criminal Justice system 2013/14. Obtain from Birmingham Youth Offending Service. England taken from Public Health Outcomes Framework, and for 2012/13

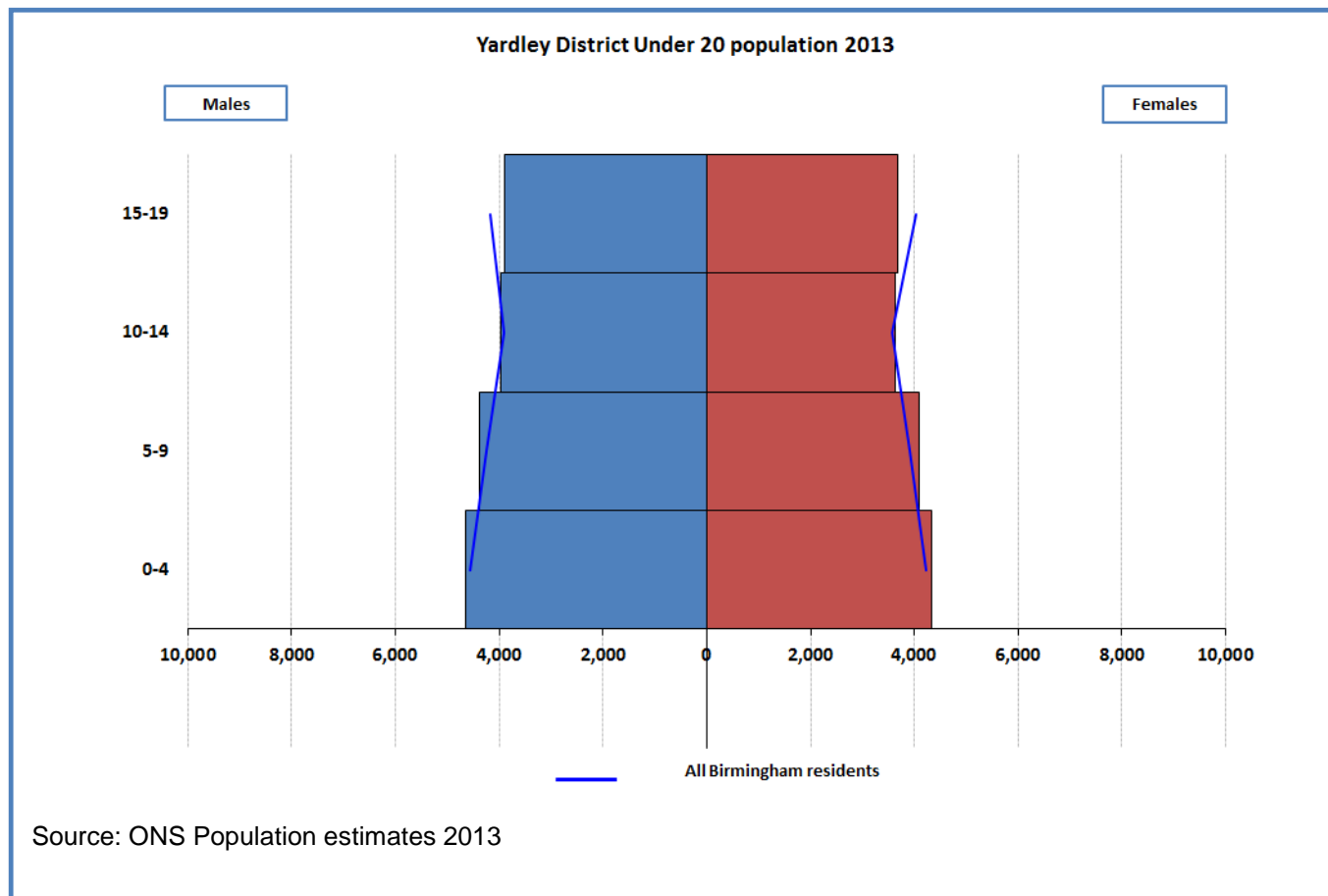
## CHILD POVERTY

### Income Deprivation Affecting Children 2010



## CHILDREN'S POPULATION

Figure 1: Under 20 Population of Yardley district 2013

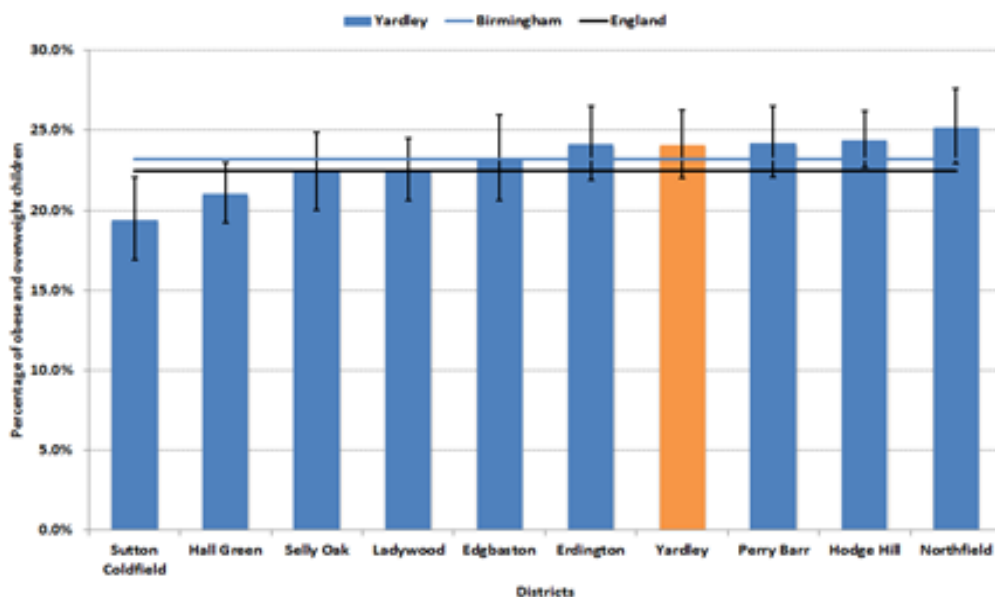


## EXCESS WEIGHT (CHILD HEALTH)

Excess weight (overweight and obesity) in children often leads to excess weight in adults, and this is recognised as a major determinant of premature mortality and avoidable ill health.

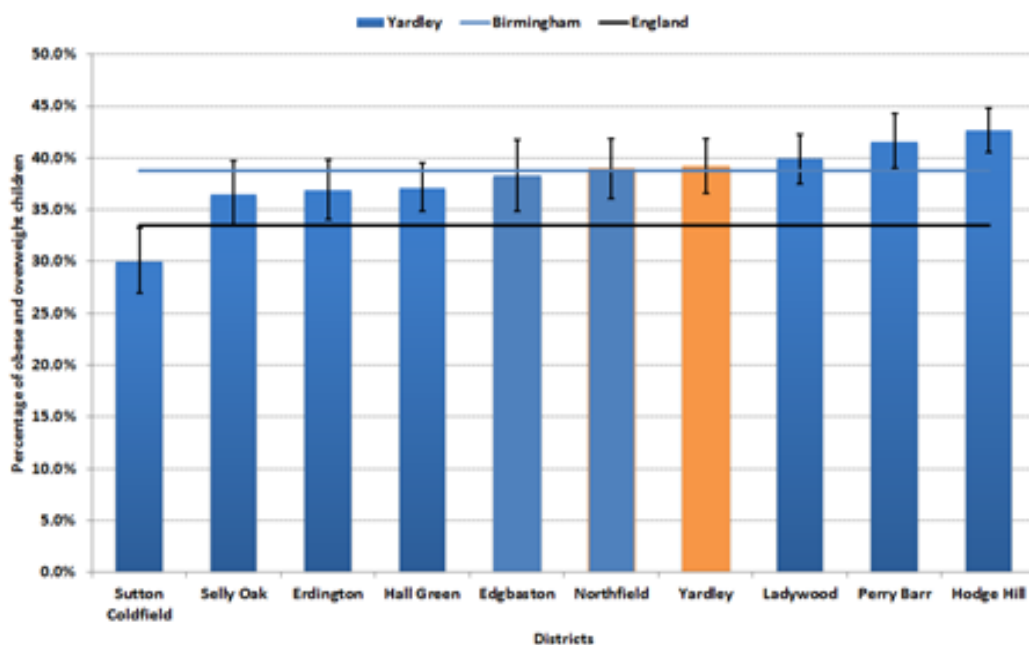
Key evidence – NICE Clinical Guidance 43: Obesity (2010)

**Figure 2: Excess Weight in Reception broken down by district** (district is highlighted in orange and the black bold horizontal line represents the Birmingham average for 2013/14)



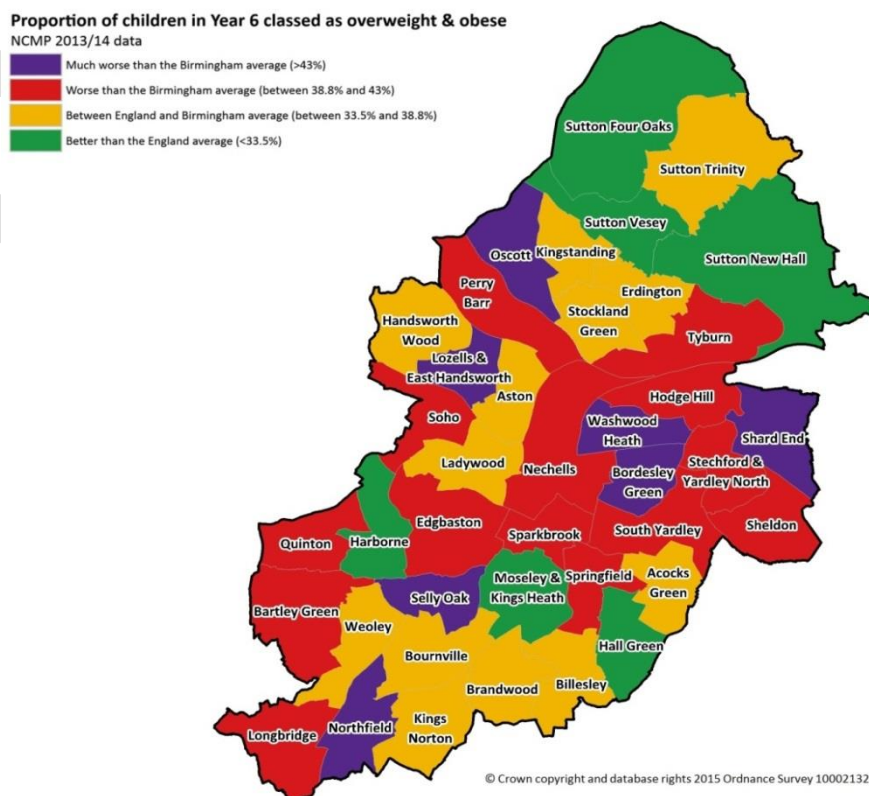
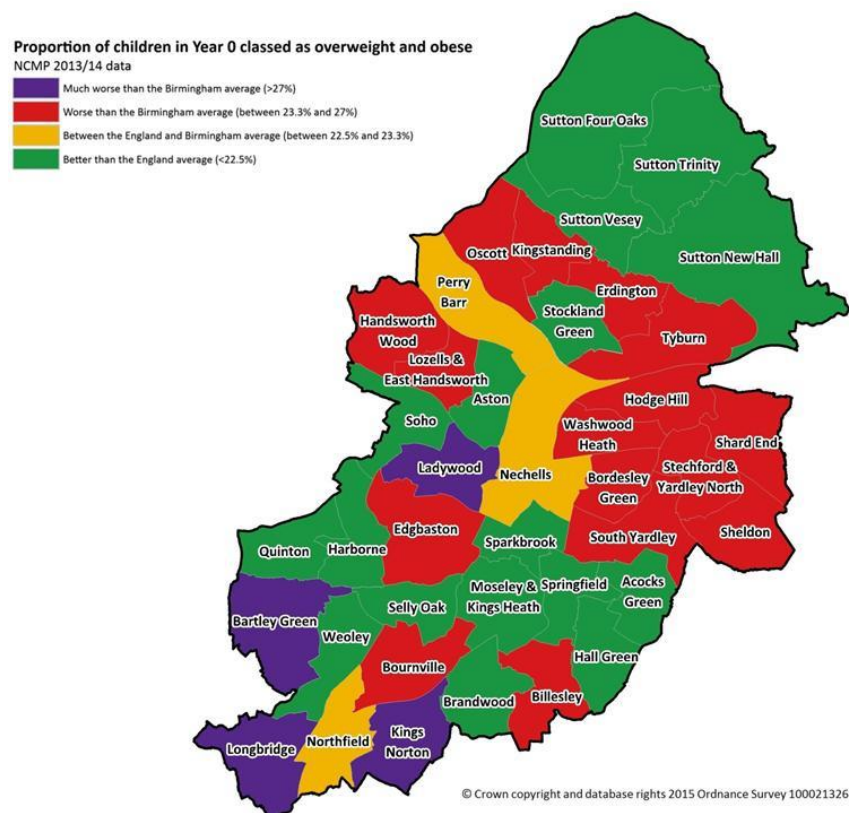
Source: National Child Measure Programme

**Figure 3: Excess Weight in Year 6 broken down by district** (district is highlighted in orange and the black bold horizontal line represents the Birmingham average for 2013/14)



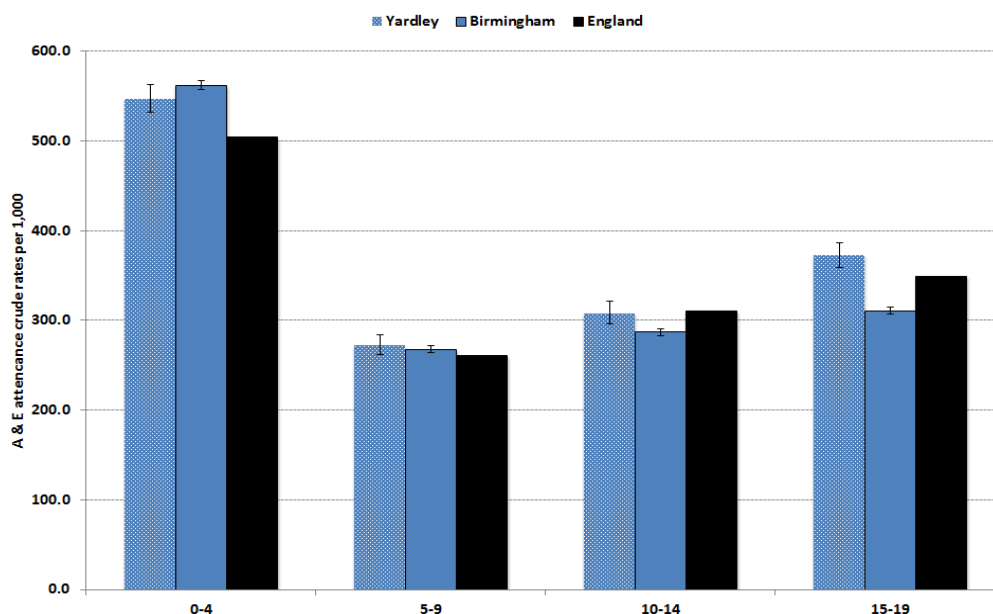
Source: National Child Measure Programme

**Figure 4 Birmingham ward map of excess weight by Reception and Year 6 2013/14**



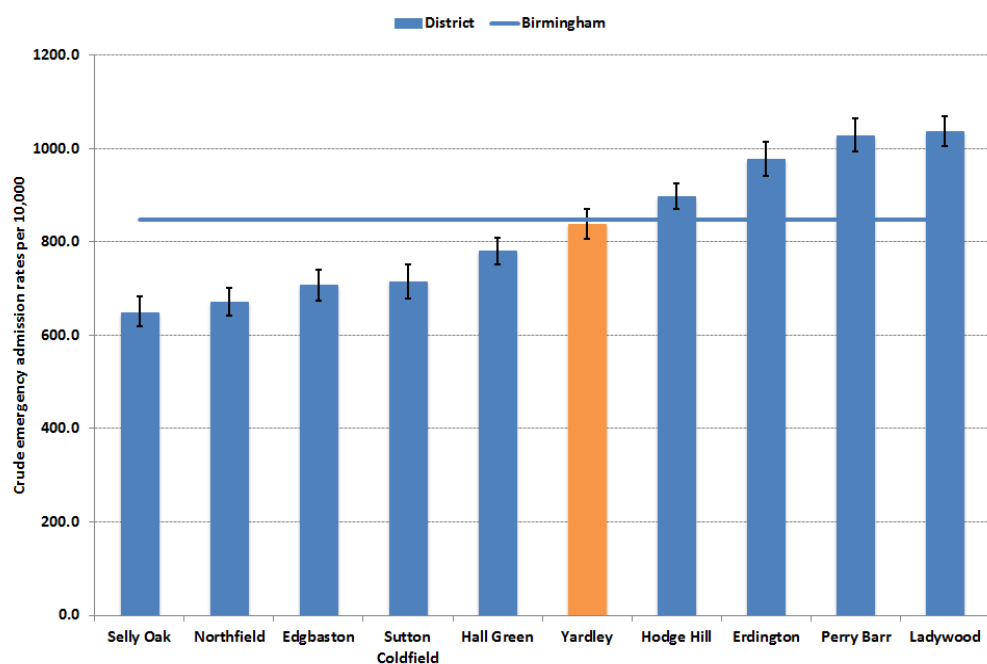
## HOSPITALISATION AND CRIME

Figure 5: Accident and Emergency attendance rates per 1,000 2013/14 (0-19 years)



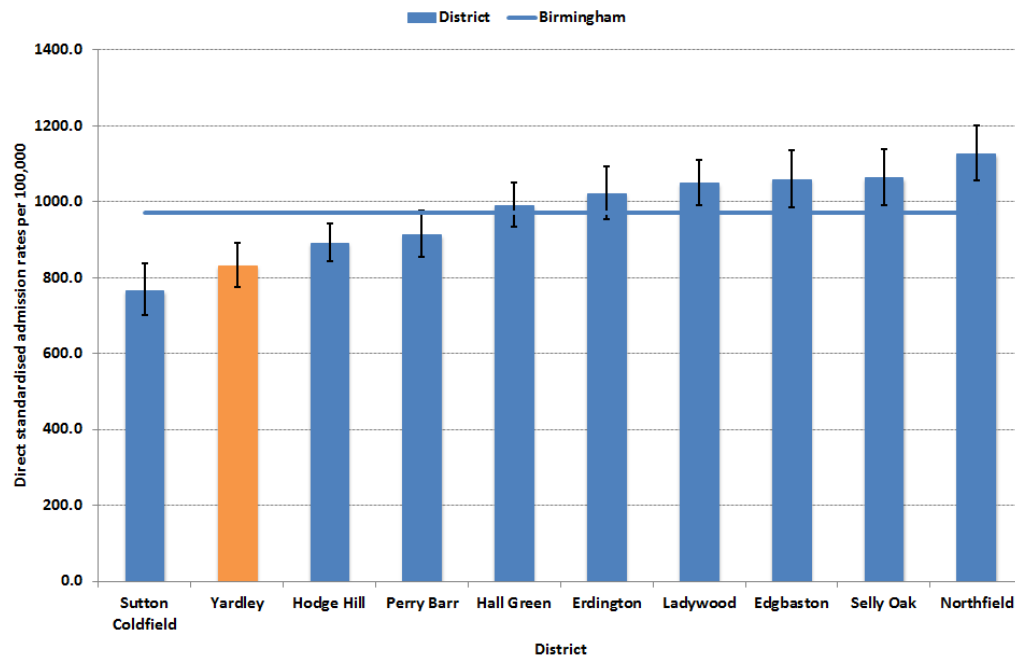
Source: SUS Midlands and Lancashire CSU

Figure 6: Crude emergency admissions rates per 10,000 for 0-19 in 2013/14 (district in orange)



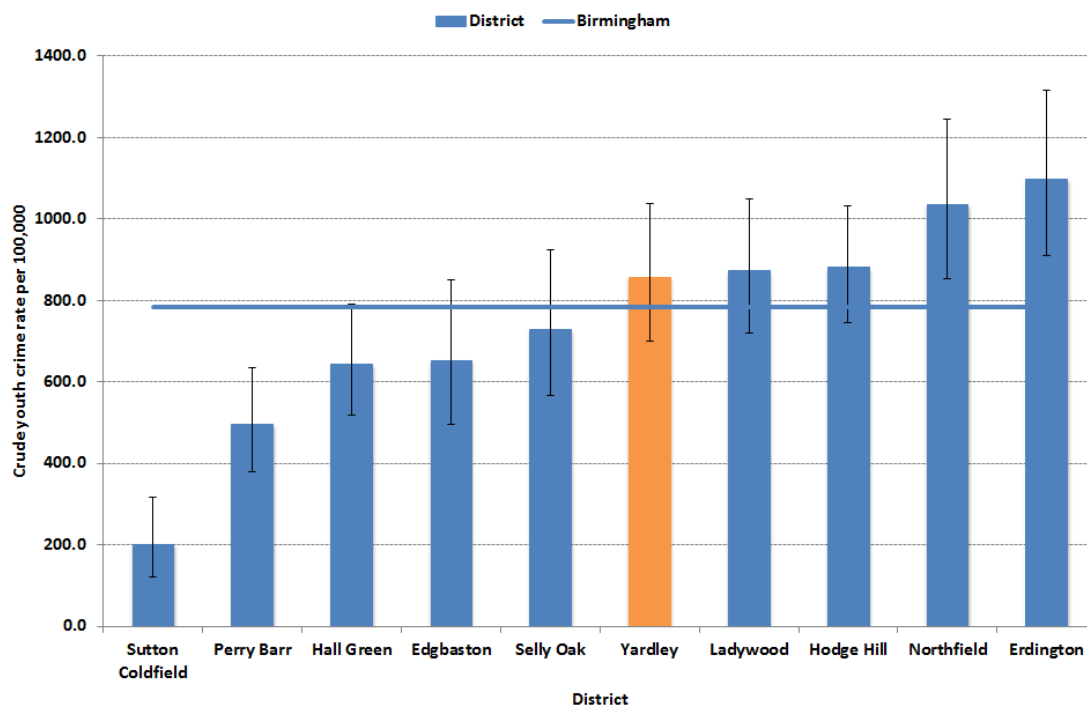
Source: SUS Midlands and Lancashire CSU

**Figure 7: Directly standardised emergency admission rates per 100,000 for accidents under 20 in 2013/14 (district in orange)**



Source: SUS Midlands and Lancashire CSU

**Figure 8: Crude youth offending rates per 100,000 October 2013 to Sept. 2014 (district in orange)**



Source: Birmingham Youth Offending Service