

Cordon Counts

Sustainability and Transport Overview and
Scrutiny Committee

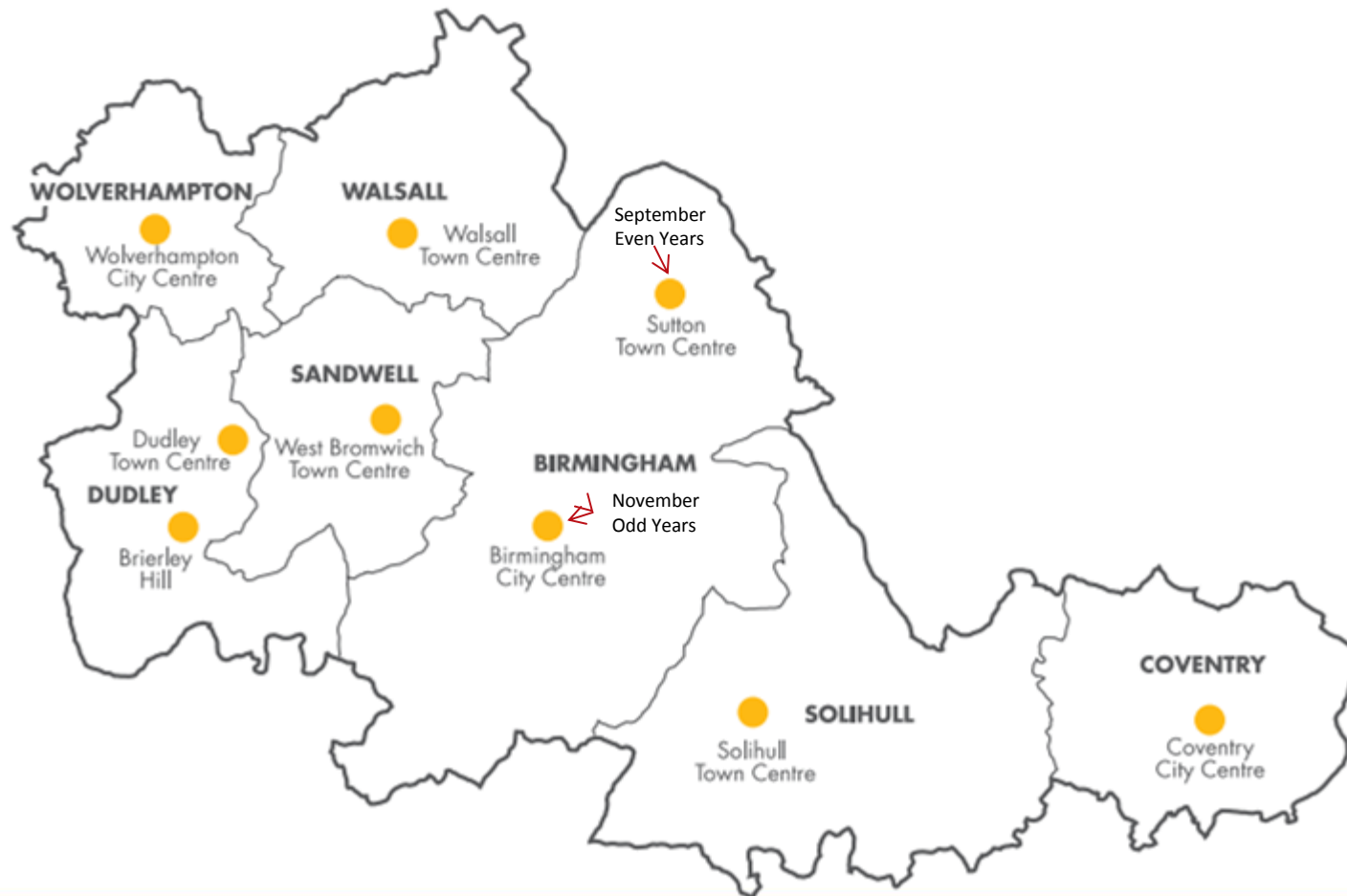
8 November 2018



Cordon Counts - History

- Undertaken every 2 years in 9 West Midlands Centres
- Part of Local Transport Plan monitoring process
- Useful overview of transport trends in key centres
- Vital input into the traffic modelling used to create business cases for new schemes

Cordon Counts - Overview



Count Locations



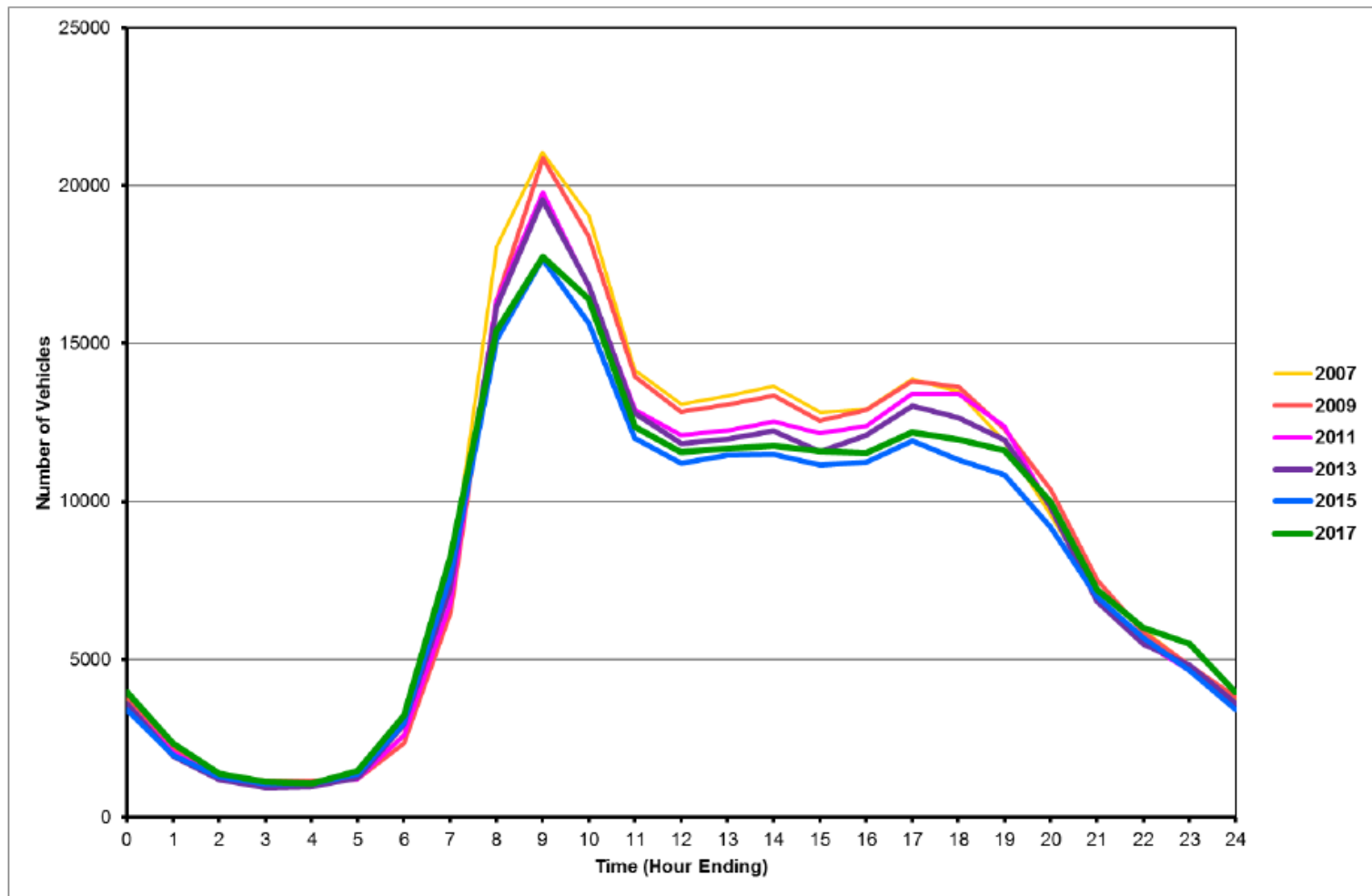
Based on Ordnance Survey mapping with permission of the Controller of HMSO © Crown copyright.
Unauthorised reproduction infringes Crown copyright and may lead to prosecution or civil proceedings.
Mott MacDonald Licence number 100021326 2018



Methodology

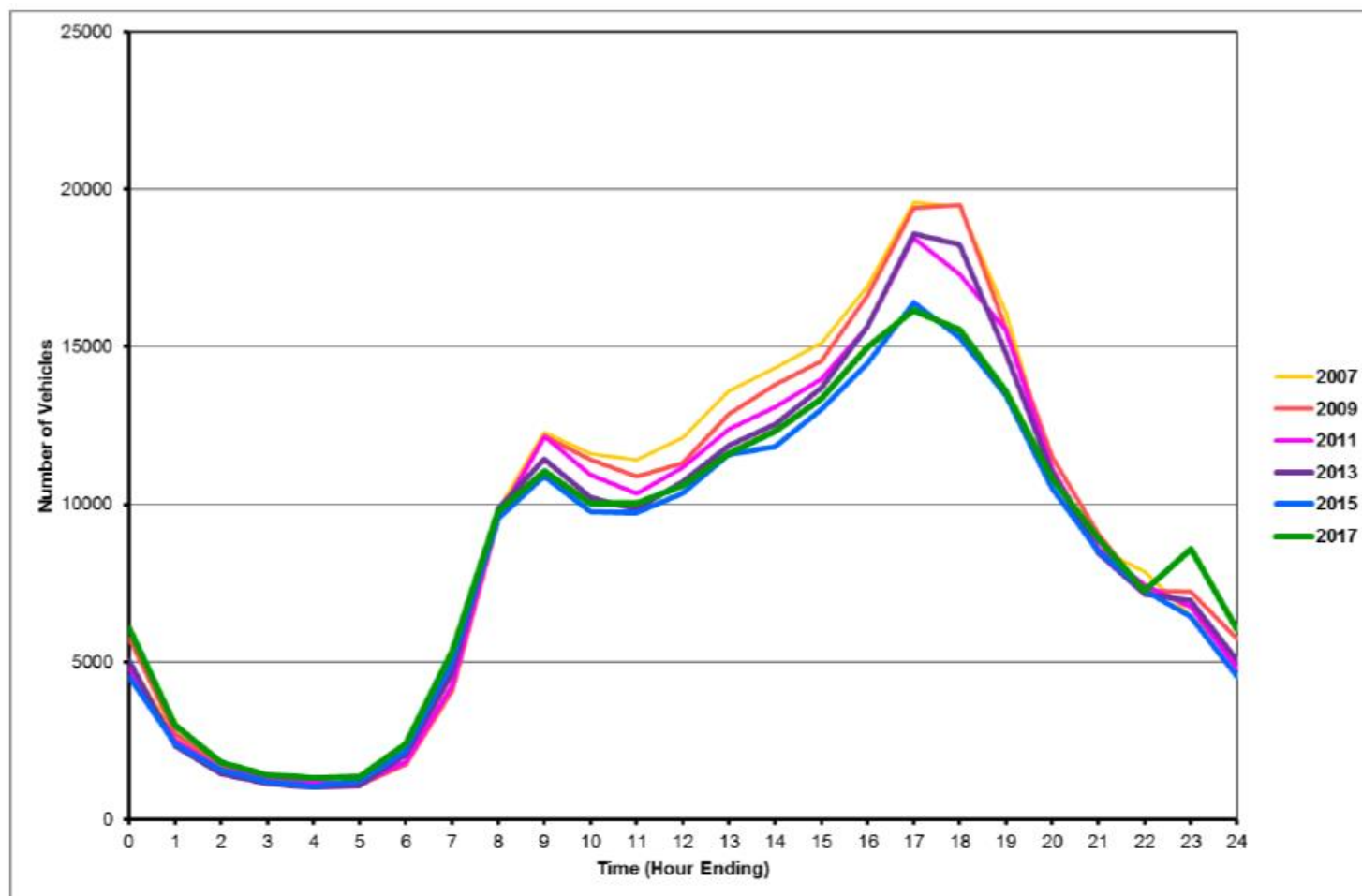
- Count types:-
 - Automatic traffic counts – for motor vehicles – 24 hours for 7 days
 - Manual counts – samples split by mode – 7am – 7pm for 1 day
 - Public Transport counts – count of bus and train passengers

Results – Cars - inbound



Source: Birmingham Cordon Surveys (since 2007)

Results – Cars - Outbound



Source: Birmingham Cordon Surveys (since 2007)

Vehicle Type

	Inbound	Inbound %	Outbound	Outbound %
Light Vehicles	145,803	93.5%	142,139	93.9%
Pedal Cycles	1,260	0.8%	1,054	0.7%
Bus and Coach	4,307	2.8%	4,234	2.8%
Heavy Vehicles	4,545	2.9%	3,913	2.6%

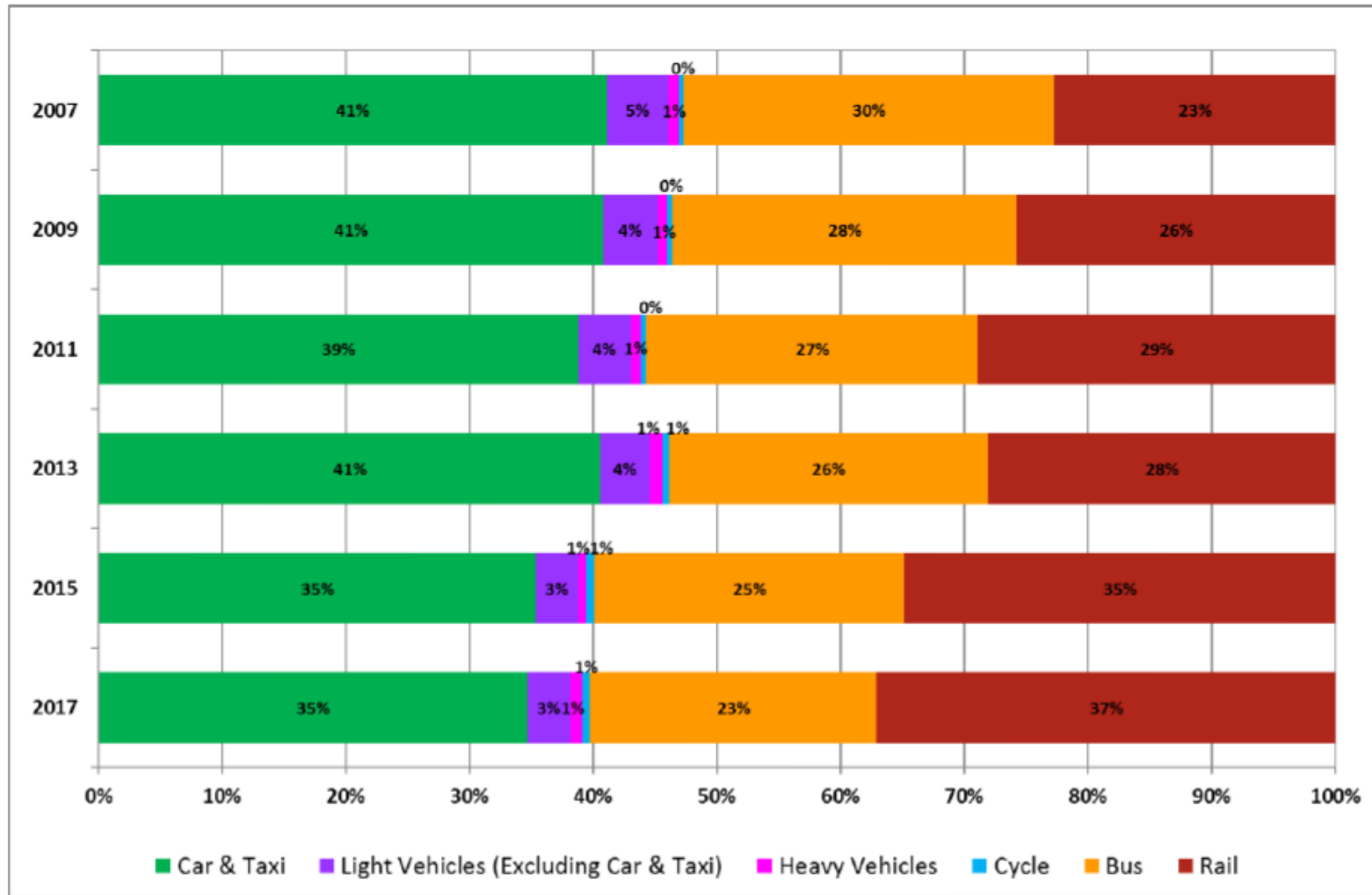
Source: Birmingham Cordon Surveys (2017)

Mode Split

	2007	2009	2011	2013	2015	2017
Car and Taxi	41,546	41,416	37,256	39,751	35,658	35,081
Bus	30,268	28,256	25,749	25,179	25,315	23,424
Rail	22,967	26,193	27,798	27,506	35,085	37,567
Metro	1,585	1,570	1,687	1,538	299	1,616
Bus, Rail and Metro	54,820	56,019	55,234	54,223	60,699	62,607
Cycle	388	435	464	549	609	580
Light Vehicles (Excluding Car and Taxi)	5,032	4,549	4,125	3,839	3,367	3,511
Heavy Vehicles	858	745	757	1,058	720	1,000
All	102,645	103,164	97,836	99,420	101,053	102,779
% of Bus and Rail	53%	54%	56%	55%	60%	61%

Source: Birmingham Cordon Surveys (since 2007)

Mode Split



Source: Birmingham Cordon Surveys (since 2007) with additional data provided for bus and rail trips by TfWM

The Future

- Count every two years of limited value
- Move towards real-time cordon
- Clean Air Zone Cameras, Bluetooth monitoring
- TfWM investigating use of video and app based data collection

Thank You