

# Overview and Scrutiny Report: East Birmingham July 2022

Mark Gamble  
Head of East Birmingham Development



**BE BOLD BE BIRMINGHAM**





# The Place



**BE BOLD BE BIRMINGHAM**





# The Challenge

**85%**

of wards are in the  
10% most deprived  
in England

**10+ years**

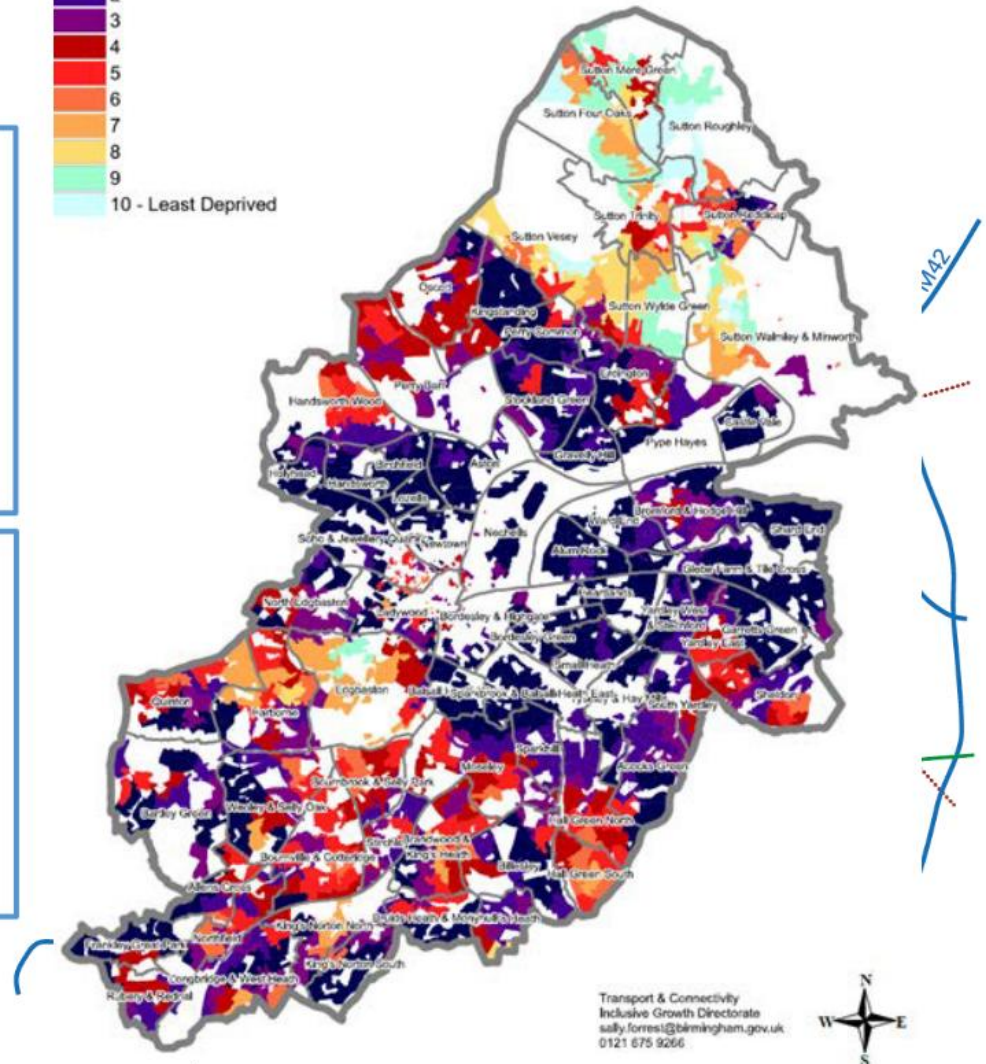
gap in average life  
expectancy between  
wards

**11.4%**

Unemployment,  
double UK average

**28.2%**

of the population is  
under 16  
(more than any local  
authority in the country)

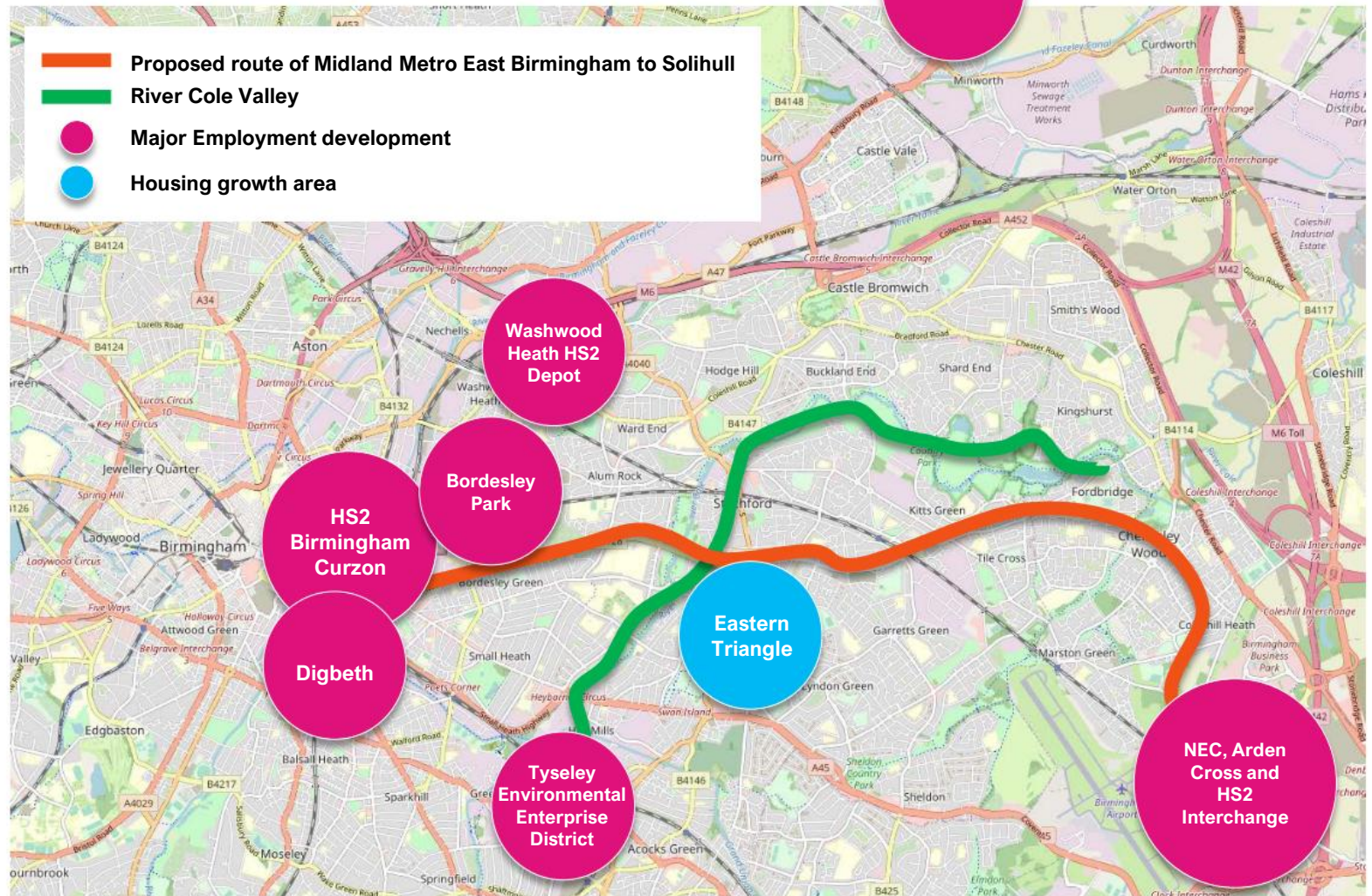


**BE BOLD BE BIRMINGHAM**





# The Opportunity



BE BOLD BE BIRMINGHAM





# The Ambition

*Prosperity and opportunity for all*  
in East Birmingham

60,000 Jobs

10,000 Homes

Major infrastructural investments: HS2 and Metro

A focal point for green technology

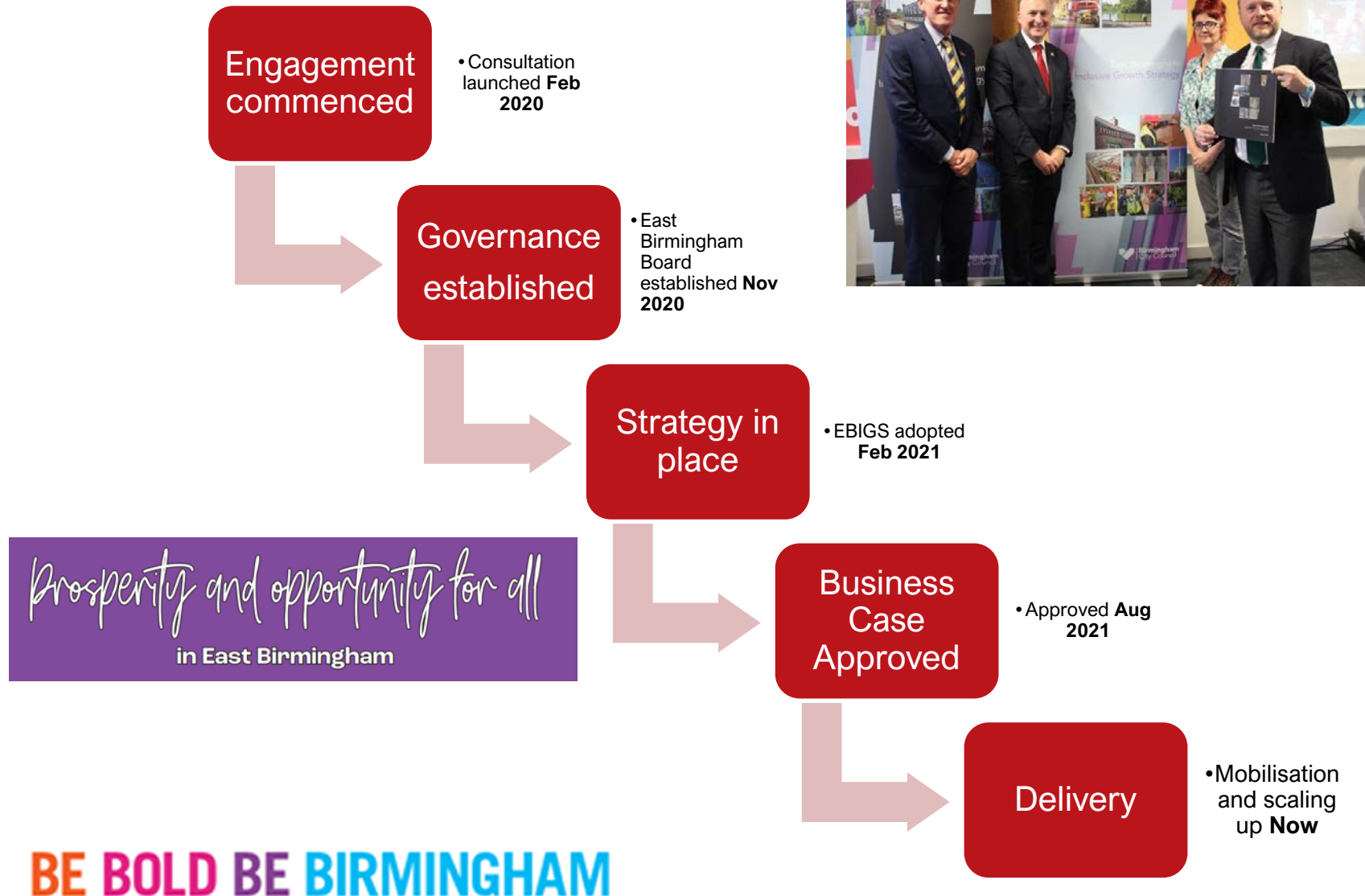


**BE BOLD BE BIRMINGHAM**



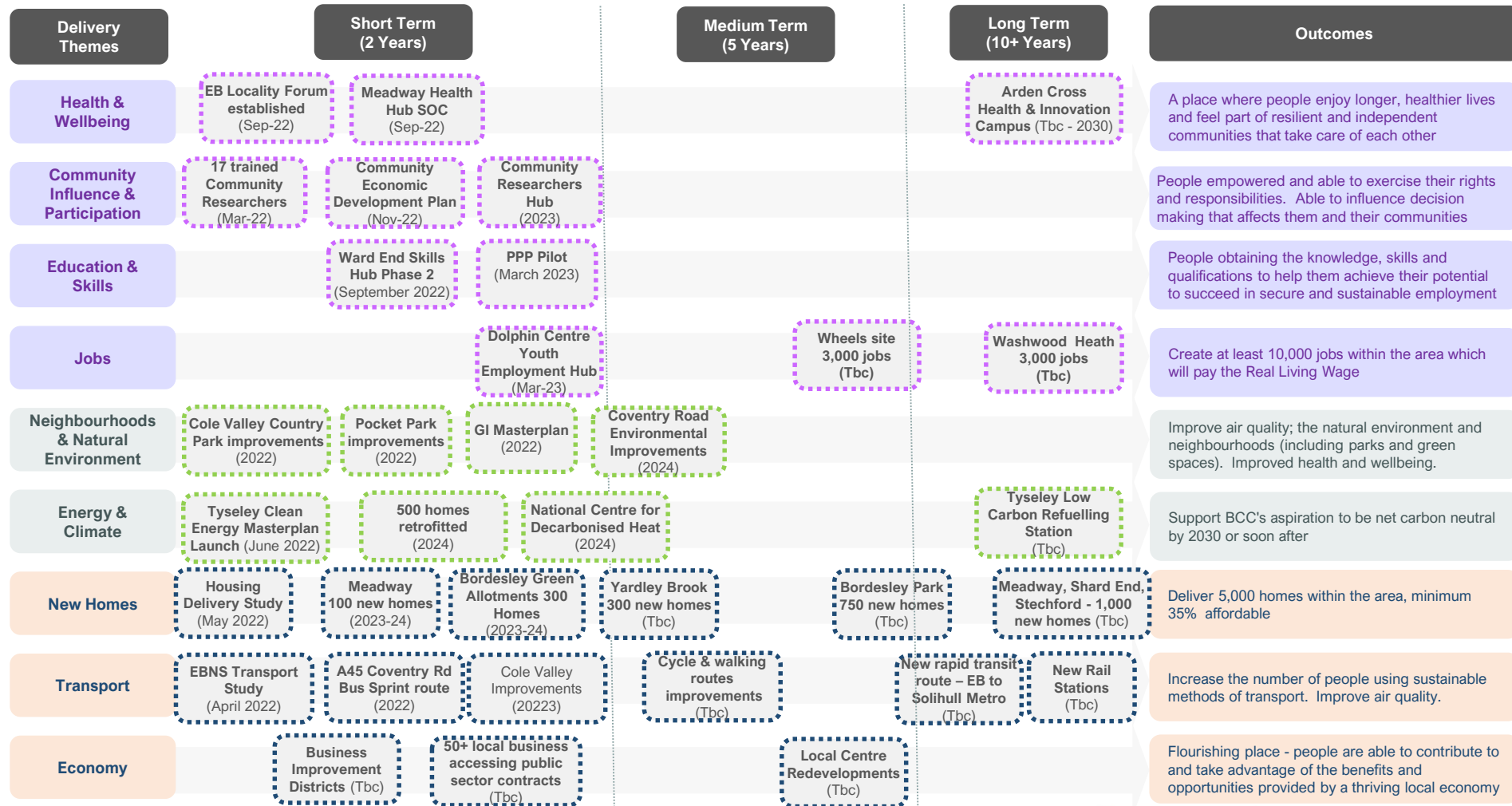


# The Approach





# Programme Roadmap



**BE BOLD BE BIRMINGHAM**





# East Birmingham Programme Workstreams

WORKSTREAM	TASKS	OUTPUTS
Mobilisation of Programme Team	<ul style="list-style-type: none"> <li>Confirm resource structure</li> <li>Write JDs/Briefs for required resources</li> <li>Recruit (phased)</li> <li>Induct and mobilise</li> </ul>	Capacity for delivery at scale
Programme Development	<ul style="list-style-type: none"> <li>Input into Levelling Up, Devo Deal, Impact Investment etc.</li> <li>Asset-led Delivery Vehicle</li> <li>Impact/monitoring</li> </ul>	Alignment with opportunities to scale up Delivery Vehicle SOC EB Monitoring framework
Project Development	<ul style="list-style-type: none"> <li>Develop project business cases within workstreams</li> </ul>	Project OBCs & FBCs
Project Delivery	<ul style="list-style-type: none"> <li>Delivery of projects in accordance with business cases</li> </ul>	Project outputs
Programme Facilitation and ongoing activities	<ul style="list-style-type: none"> <li>Programme Management</li> <li>Community &amp; stakeholder development and engagement</li> </ul>	Board Meetings Rapid Policy Unit Community Development



# Project Delivery

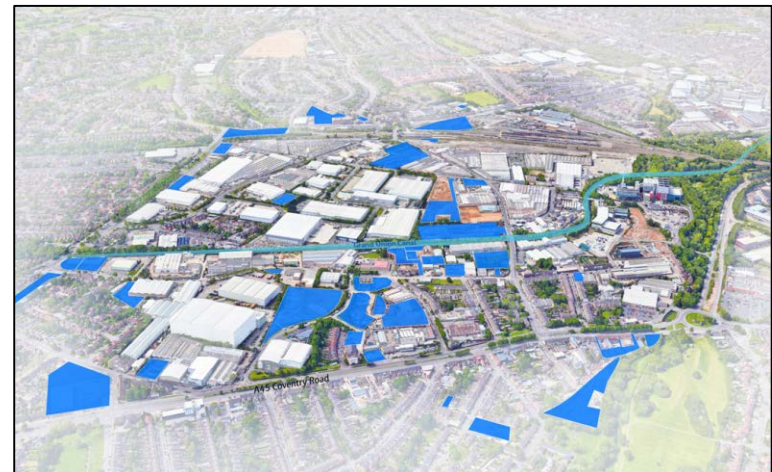
**A diverse package of projects are in progress across the area and the Programme has secured £2m external funding so far (not including £20m Wheels Levelling Up Fund)**

## **Outputs this year:**

- Dolphin Centre Full Business Case
- Meadway local centre: Feasibility Report and OPE project
- Tyseley Clean Energy Masterplan
- Ward End skills hub designs and costings
- Cole Valley active travel design work
- Collaborative engagement work with Birmingham City University – community researchers recruited
- EB Green Infrastructure Vision
- Transport corridor study report

## **Currently underway:**

- Partnerships for People and Place – employment and careers pilot
- Housing delivery pipeline study with Homes England
- Net Zero Neighbourhood bid to WMCA
- USE-IT international collaboration – leading best practice in community wealth building
- Cole Valley Community Commons

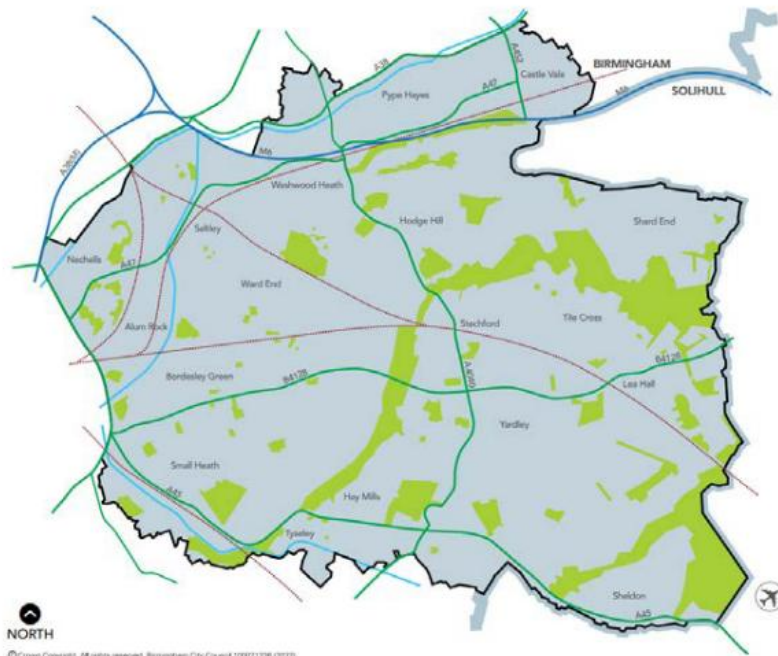


**BE BOLD BE BIRMINGHAM**



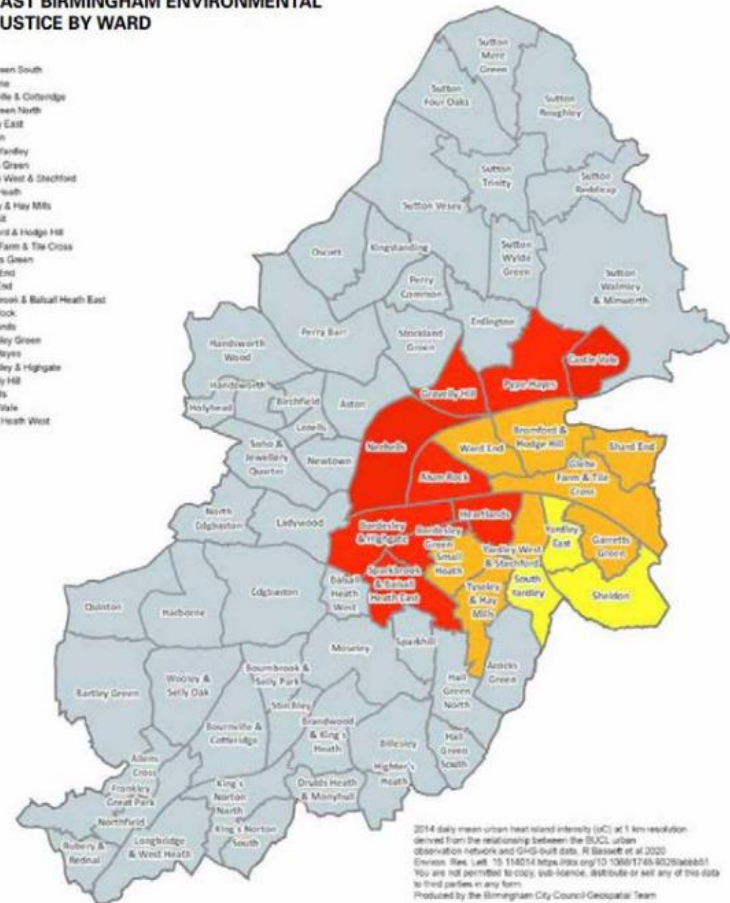


# Highlight: East Birmingham Green Infrastructure



© Crown Copyright. All rights reserved. Birmingham City Council 10021308 (0122).

PLAN 2 EAST BIRMINGHAM ENVIRONMENTAL JUSTICE BY WARD



2014 daily mean urban heat island intensity (UICI) at 1 km resolution derived from the relationship between the BCU urban observation network and GHG-out data. © Baseth et al 2020. Emission files left: 15 114014 https://data.birmingham.gov.uk/dataset/2014-urban-heat-island-intensity You are not permitted to copy, edit, re-use, distribute or sell any of this data to third parties in any form. Produced by the Birmingham City Council Geospatial Team

BE BOLD BE BIRMINGHAM





## BIRMINGHAM AS A CITY OF NATURE IS:

### A GREEN CITY

#### WHERE:

Net Zero ambitions are fulfilled

Sustainable, inclusive, green and resilient development is delivered

### A HEALTHY CITY

#### WHERE:

People will easily find places to enjoy nature safely to enable nature connectedness for their wellbeing

Growing in the community will be supported leading to at least one community garden in every ward of the city

### A FAIR CITY

#### WHERE:

There is increased equality of access to and use of green space across our city, through the Birmingham Fair Park Standard

Citizens will be equipped with the skills to fulfil the future green jobs needed to deliver this vision

### AN INVOLVED CITY

#### WHERE:

Our most passionate advocates of nature will become Green Champions - recognising the importance of their work looking after our blue and green spaces

Our children learn about the wonders of nature as Little and Young Green Champions

Citizens will be encouraged to bring their local green spaces to life using nature focused activities

### A VALUED CITY

#### WHERE:

The city adopts a sustainable finance framework and a circular economy model for the future funding of the city's blue and green spaces

We make visible the invisible benefits to the city and citizen of good quality blue and green space



BE BOLD BE BIRMINGHAM





## KEY

### EAST BIRMINGHAM PROGRAMME PROJECTS

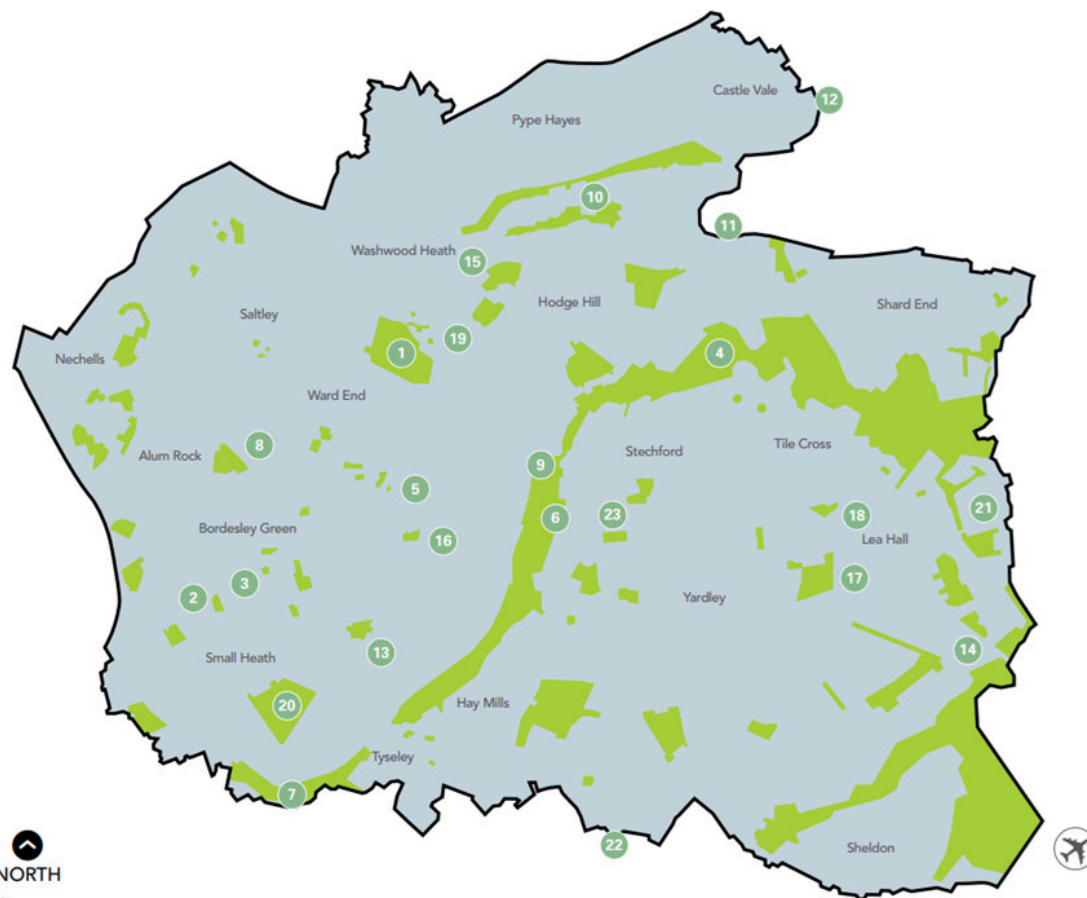
- 1 Ward End Park
- 2 City of Nature Bordesley and Highgate pilot
- 3 Bordesley Green Spatial Pilot
- 4 Glebe Farm

### PARTNER PROJECTS

- 5 Bordesley Green Allotments Youth Engagement
- 6 Love Your River Cole (LYRiC)
- 7 River Cole Community Commons

### COMMUNITY PROJECTS

- 8 Adderley Park
- 9 Bachelor's Farm Playing Fields
- 10 Bromford Estate
- 11 Castle Bromwich Hall Gardens
- 12 Castle Vale Leisure Gardens
- 13 Digby Park
- 14 Fastmoor Oval
- 15 Fairholme Allotments
- 16 Ideal Park
- 17 Kents Moat Park
- 18 Lea Village Community Garden
- 19 St Margaret's Road Ward End
- 20 Small Heath Park
- 21 Welcome Community Garden
- 22 Westley Vale Millennium Green
- 23 Yardley Fields and Manor Road Recreation Ground



**BE BOLD BE BIRMINGHAM**





# Green Infrastructure: Next Steps

## Develop a Green Infrastructure Action Plan for East Birmingham

- To guide the delivery of this Vision further work is now required, comprising a green infrastructure appraisal across the entire geography of East Birmingham, and an Action Plan setting out the specific measures and approaches needed to address the full scope of the Vision.

## Transform the river Cole valley as a green lung and active travel artery for the city

- Over the past twenty years the Cole Valley has been transformed from rough riversides or bleak open recreation grounds to two connected country parks with 7 miles of walking and cycling route. This major asset will be further enhanced as the centrepiece of East Birmingham's blue and green infrastructure.

## Work with communities to accelerate the improvement of their parks and green spaces in line with the Fair Park Standard

- Building on the City of Nature pilot in Bordesley and Highgate Ward, and the many community projects which are already underway or currently emerging, extensive improvements will be brought forward to local parks and green spaces with the active participation of local communities.

## Establish a network of community gardens and growing spaces

- We will work with citizens to transform small local green spaces into positive community assets which supporting improved physical and mental health and the healthy food economy.

## Work with schools to engage children with nature-focussed activities

- Young people are East Birmingham's most important assets. We will work with schools and other organisations to ensure that young people are encouraged to become actively involved with their green spaces.

**BE BOLD BE BIRMINGHAM**





# Next Steps: key actions and priorities

- Engage with new Ward Members
- Recruitment of Programme Team (7 posts)
- Input into Devolution Deal discussions with WMCA and Solihull
- Start work on green infrastructure masterplan
- Next East Birmingham Board Agenda: housing and transport focus
- Levelling Up Fund bid for Tyseley
- Deliver Asset Led Delivery Vehicle Strategic Outline Case
- Continued project delivery with focus on strategic and community priorities:
  - Ward End & Dolphin Centre
  - Tyseley
  - Meadway
  - Net Zero Neighbourhood
  - Partnerships for People and Place
  - Digital Twin





**BE BOLD BE BIRMINGHAM**

