

Members are reminded that they must declare all relevant pecuniary and non-pecuniary interests relating to any items of business to be discussed at this meeting

BIRMINGHAM CITY COUNCIL

HEALTH, WELLBEING AND THE ENVIRONMENT OVERVIEW AND SCRUTINY COMMITTEE

TUESDAY, 09 AUGUST 2016 AT 10:00 HOURS
IN COMMITTEE ROOM 2, COUNCIL HOUSE, VICTORIA SQUARE,
BIRMINGHAM, B1 1BB

A G E N D A

1 NOTICE OF RECORDING

The Chair to advise/meeting to note that this meeting will be webcast for live and subsequent broadcast via the Council's Internet site (www.birminghamnewsroom.com) and that members of the press/public may record and take photographs.
The whole of the meeting will be filmed except where there are confidential or exempt items.

2 APOLOGIES

3 - 6

3 ACTION NOTES

To confirm the action notes of the meeting held on 19 July 2016.

4 DECLARATIONS OF INTERESTS

7 - 18

5 URGENT CARE IN BIRMINGHAM

Karen Richards, Associate Director of Urgent Care, Birmingham CrossCity Clinical Commissioning Group.

19 - 26

6 WORK PROGRAMME 2016/17

For discussion.

7 **REQUEST(S) FOR "CALL IN"/COUNCILLOR CALLS FOR ACTION/PETITIONS RECEIVED (IF ANY)**

To consider any request for "call in"/Councillor calls for action/petitions (if received).

8 **OTHER URGENT BUSINESS**

To consider any items of business by reason of special circumstances (to be specified) that in the opinion of the Chair are matters of urgency.

9 **AUTHORITY TO CHAIR AND OFFICERS**

Chair to move:-

'In an urgent situation between meetings, the Chair jointly with the relevant Chief Officer has authority to act on behalf of the Committee'.

BIRMINGHAM CITY COUNCIL

HEALTH, WELLBEING & ENVIRONMENT O&S COMMITTEE

10.00 hours on 19th July 2016, Committee Room 3&4 – Actions

Present:

Councillor John Cotton (Chair)

Councillors Uzma Ahmed, Deirdre Alden, Sue Anderson, Mick Brown, Andrew Hardie, Carole Griffiths, Kath Hartley, Mohammed Idrees and Robert Pocock

Also Present:

Diana Morgan, Assistant Director, Specialist Care Services

Alison Malik, Head of Service, Commissioning Centre of Excellence

Joanne Carney, Associate Director, Joint Mental Health Commissioning Team CrossCity CCG

Robert Devlin, Senior Strategic Commissioning Manager, Mental Health

Stephen Jenkins, Forensic Outreach Services Manager, Birmingham and Solihull Mental Health Foundation Trust

1. APOLOGIES

Apologies for absence were submitted on behalf of Councillors Simon Jevon and Karen McCarthy.

2. ACTION NOTE

It was noted that apologies had been erroneously recorded on behalf of Cllrs Karen McCarthy and Simon Jevon who were present at the meeting on 21st June 2016 and the Action Note was otherwise noted.

3. DECLARATIONS OF INTERESTS

Cllr Andrew Hardie declared an interest as a registered GP in Birmingham.

4. CARE CENTRES AND ENHANCED ASSESSMENT BEDS

The information briefing was presented and the following action points were raised in the course of the discussion:

1. Data to be provided by Alison Malik on the numbers of people who have gone home with a care package in place.
2. Cllr Carole Griffiths requested that visits to Care Centres be arranged and the offer to be extended to any of the other scrutiny members wishing to attend – scrutiny officers to liaise with Diana Morgan to organise.
3. In response to Cllr Pocock's query it was agreed to provide activity data for the Enhanced Assessment Bed Service to cover what is the range around the average length of stay, the length of time involved for different types of patients and whether this has any bearing on whether they subsequently return to hospital or move out to a more permanent location.
4. The consultation on the remaining Norman Power and Perry Tree Care Centres is due to take place between August – October 2016. Members requested that a further report be added to the scrutiny work programme in October reflecting the findings from the consultation before the findings go back to the Cabinet with the final business case in November. The report should include an update on the position with the remaining two residential care centres, will need to reflect on costings in future considerations and also information on the enhanced assessment bed model including available performance data.
5. The committee needs to do some further work around housing adaptations on measures being taken to unblock that part of the process.

5. MENTAL HEALTH - WORKING IN PARTNERSHIP WITH CRIMINAL JUSTICE AGENCIES TRACKING REPORT

The tracking report on the three remaining outstanding recommendations from the Mental Health – Working in Partnership with Criminal Justice Agencies Report was presented. Following questions and discussion with members the outcome was as follows:

R05 – Agreed with Cabinet Member assessment of 2 (Achieved Late)

R08 – Agreed with Cabinet Member assessment of 2 (Achieved Late)

R11 – Agreed with Cabinet Member assessment of 2 (Achieved Late)

It was agreed that any future oversight should be through the Mental Health Programme Board.

6. WORK PROGRAMME

The contents of the e-mail received on 13th July in relation to the Worcestershire Acute Hospital Services Review advising that the process is reaching a stage of formal public consultation was shared with members. It was agreed that there were concerns

about the proposed clinical model for Worcestershire and that a Joint HOSC would need to be formed with Birmingham.

The Chair noted the heavy consultation workload that the HOSC is currently engaged in. This includes a consultation with the Sandwell Joint HOSC on End of Life Care Services, Procedures of Lower Clinical Value with the Solihull Joint HOSC, The Urgent Care consultation for which an additional August meeting of the main HOSC has been organised, the Waste to Resource Workshops and the additional third Joint HOSC with Worcestershire which will now need to be formed to deal with the Worcestershire Acute Hospital Services Review. It was agreed that the Chair and the Deputy Chair would approach the Chief Executive and the Improvement Panel to open a discussion about the remit of this committee in the light of the statutory duties which this committee is already obliged to discharge.

7. REQUEST(S) FOR CALL IN/COUNCILLOR CALL FOR ACTION/PETITIONS

None

8. OTHER URGENT BUSINESS

None

9. AUTHORITY TO CHAIRMAN AND OFFICERS

RESOLVED:-

That in an urgent situation between meetings the Chair, jointly with the relevant Chief Officer, has authority to act on behalf of the Committee.

The meeting ended at 11.15 hours.

Urgent care in Birmingham

**Birmingham Health, Wellbeing and Environment
Overview and Scrutiny Committee – 9 August
2016**

Karen Richards, Associate Director of Urgent Care

What is urgent care?

If your illness or injury is urgent

This means...not life threatening and requiring an A&E visit

But, it can't wait for a routine GP appointment

For example:

- Sprains and strains
- Broken bones
- Wound infections
- Minor burns and scalds
- Minor head injuries
- Insect and animal bites
- Minor eye injuries
- Mild breathing difficulties
- Skin irritation and rashes

The current Urgent Care Centre landscape:

- 8 Urgent Care Centres
- The majority of these are open 8am-8pm but not all
- Some of the centres are nurse led and others are GP led
- Provide treatment for minor injuries and illnesses

We are committed to an integrated and coherent solution for urgent and emergency care

Our key objectives are to:

- Simplify the urgent care system so patients can always access the right service, the first time;
- Provide 24/7 access to medical advice, support and care where needed;
- Have streamlined, integrated services which avoid unnecessary hospital admissions, enable timely discharge and support people at a time of crisis; and
- Support patients to use the most appropriate NHS service.

Current walk-in and urgent care centre provision

<u>UCC/Walk-in Centre</u>	<u>Opening hours</u>	<u>Staffing model</u>	<u>Annual attendances</u>
Warren Farm	8.00am – 8.00pm	Nurse-led	29,548
Washwood Heath	9.00am – 9.00pm	Nurse-led	31,670
City Centre	M-F: 8.00am – 7.00pm Sat: 9.00am – 6.00pm Sun: 1.00am – 4.00pm	Nurse-led	37,738
Erdington	8.00am – 8.00pm	GP-led	31,119
South Birmingham	8.00am – 8.00pm	GP-led	64,012
The Hill	8.00am – 8.00pm	Nurse-led	26,634
Summerfield	8.00am – 8.00pm	GP-led	52,593
Solihull	8.00am – 8.00pm	GP-led	48,744
			322,058

National direction...

The Urgent and Emergency Care Review

Published: November 2013 (the Keogh Review)

Proposed: A fundamental change in the way urgent and emergency care services are provided

Aims: To improve our out of hospital services with more care delivered closer to home and reducing hospital attendances and admissions

The Five Year Forward View

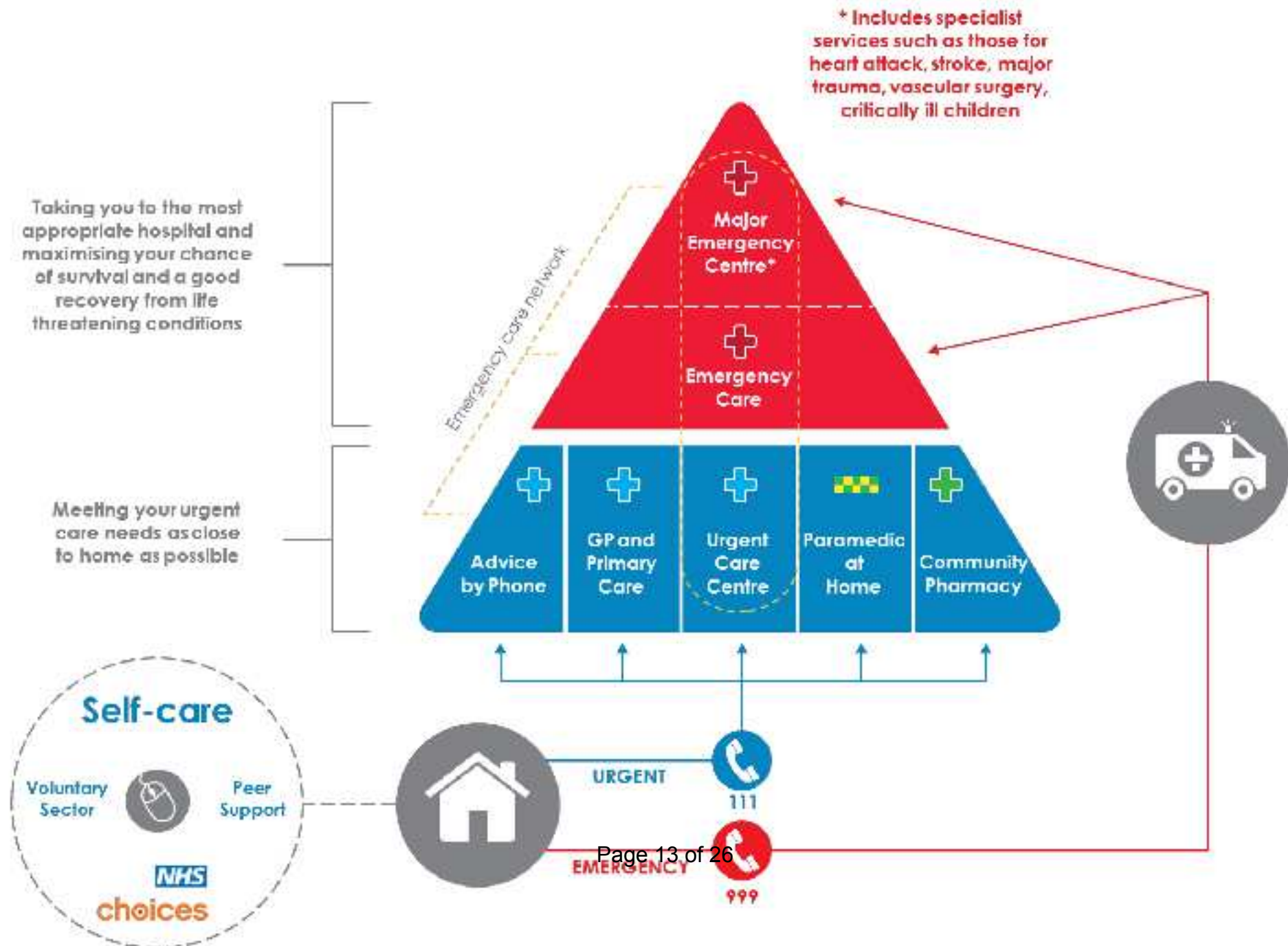
Published: October 2014

Reinforces the Urgent and Emergency Care Review by setting out the need to redesign urgent and emergency care for people of all ages, with physical and mental health problems

Challenges in Birmingham...

1. To ensure that we are offering consistently high-quality care to our diverse local population.
2. We are experiencing growing levels of demand for urgent and emergency care services.
3. General practice is also experiencing increasing demand.
4. Currently the urgent and emergency care system is confusing, with multiple points of entry for patients and carers, and different types of services across A&E, walk-in centres, GP out-of-hours centres, urgent care centres and NHS 111.
5. In 2015/16, the CCGs spent an extra £11.68m on solutions to try and ease these issues.
6. Whilst progress has been made, much more needs to be done to transform our urgent and emergency care services and achieve an appropriate balance and level of services to meet the needs of our population.

An integrated solution...



NHS 111 re-procurement

- This is not just the re-procurement.
- Key differences from the existing NHS 111 service include:
 - Increased clinical presence in the call centre;
 - Integration with the GP out of hours service;
 - Electronic booking of appointments for patients who need to be seen face-to-face;
 - Access to shared health records; and
 - Increasing use of technology.
- The announcement of the successful bidder will be made on 1 August.
- A mobilisation board will ensure that the new service goes live on 1 November 2016.
- Once the new service is established, there will be a campaign to promote increased use within the West Midlands.

What could an urgent care centre offer?

- 24/7 unscheduled walk in service
- GP on duty 24/7
- Advanced nurse practitioner on duty 24/7
- Routine paediatrics, including after school clinics
- Emergency ambulatory clinics, to avoid patients having to stay in hospital overnight
- Access for patients to be brought by ambulance
- Observation area, for up to four hours

-
- | | |
|---|--|
| <ul style="list-style-type: none">• Diagnostics:<ul style="list-style-type: none">• Plain film radiology• Ultrasound scanning• Electrocardiogram (ECG) testing (to check heart rhythm)• Deep Vein Thrombosis (DVT) screening | <ul style="list-style-type: none">• Minor procedures:<ul style="list-style-type: none">• Suturing (stitches)• Plastering• Wound dressing |
|---|--|

-
- Pharmacy, including prescriptions

Scenarios: what could the future look like?

Scenario 1 –

Re-procure the existing services at existing locations

Scenario 2 –

6 centres remain with extended hours and standardisation

Scenario 3 –

6 centres remain with extended hours and standardisation plus the enhancement of 1 centre to test the enhanced services offering

Scenario 4 –

2 centres are co-location with A&E's, existing centres remain with extended hours and standardisation

Scenario 5 –

3 Stand alone, 24/7 Urgent Care Centres providing enhanced services

Scenario 6 –

3 standardised centres each co-located with an A&E

The process...

- Extensive pre-consultation public engagement in 2014
- Patient reference group established to develop scenarios – April 2016
- Further pre-consultation engagement, including multi-agency and patient event – July 2016 onwards
- Six scenarios presented to Governing Bodies – July 2016
- Integrated Impact Assessment – August / September 2016
- Pre-consultation business case , STP and NHS E approval processes
- Formal public consultation - October 2016 (tbc)
- Post- consultation business case
- STP / NHSE approval process
- Procurement process – circa 12 months



Health, Wellbeing and the Environment Overview & Scrutiny Committee 2016/17 Work Programme

Committee Members:

Cllr Uzma Ahmed
Cllr Deirdre Alden
Cllr Sue Anderson
Cllr Mick Brown

Chair: Cllr John Cotton

Cllr Carole Griffiths
Cllr Andrew Hardie
Cllr Kath Hartley
Cllr Mohammed Idrees

Cllr Simon Jevon
Cllr Karen McCarthy
Cllr Robert Pocock

Committee Support:

Scrutiny Team: Rose Kiely (303 1730) / Gail Sadler (303 1901)

Committee Manager: Paul Holden (464 4243)

Schedule of Work

Meeting Date	Committee Agenda Items	Officers
21 June 2016	Formal Session – Appointments to Deputy Chair and Joint HOSCs Informal Session – Briefings and Background Documents	Dr Louise Lumley, Clinical Lead for Urgent Care. Karen Richards, Head of Urgent Care, Gemma Caldecott, Senior External Commas & Eng. Manager Alan Lotinga, Service Director, Health & Wellbeing / Judith Davis, Programme Director, Better Care Fund/John Wilderspin, Strategic Programme Director Sustainability & Transformation Plan Adrian Phillips, Director of Public Health Alan Bowley, Reduce, Reuse, Recycle Programme Manager



19 July 2016 @ 10.00AM	Use of Enhanced Assessment Beds including capacity in Care Centres	Diana Morgan, AD Specialist Care Services
	Tracking of the 'Mental Health: Working in Partnership with Criminal Justice Agencies' Inquiry	Joanne Carney, Associate Director, Joint Mental Health Commissioning Team, CrossCity CCG, Robert Devlin, Senior Strategic Commissioning Manager, Peter Wilson, Stephen Jenkins, BSMHFT
19 July 2016 @ 1.00PM	From Waste to Resource Workshop	Alan Bowley, Reduce, Reuse, Recycle Programme Manager
9 August 2016	Urgent Care in Birmingham (including the re-procurement of NHS 111 Service)	Karen Richards, Associate Director of Urgent Care / Carol Herity, Associate Director of Partnerships, CrossCity CCG
27 September 2016 @ 10.00AM	Healthwatch – Update	Andy Cave, CEO, Health watch Birmingham
	Cabinet Member for Health and Social Care Sustainability & Transformation Plan - progress update Local Digital Roadmap	Cllr Paulette Hamilton/ Judith Davis, Project Director STP/Alan Lotinga, Service Director, Ciaran Hoyer & Paul Sherriff, Leads for LDR
	Cabinet Member for Clean Streets, Recycling & Environment	Cllr Lisa Ticket / Jon Lawton
27 September 2016 @ 2.00PM	Tracking of the 'Tackling Childhood Obesity in Birmingham' Inquiry	Dr Andrew Coward, Chair, B 'ham South Central CCG/ Adrian Phillips, Director of Public Health /Charlene Mulhern
	Tracking of the 'Living Life to the Full with Dementia' Inquiry	Mary Latter, Joint Commissioning Manager Dementia / Cllr Paulette Hamilton / Suman McCartney, Cabinet Support Officer



25 October 2016	<p>Forward Thinking Birmingham – Mental Health Care for 0-25s (Update 6 months into the new contract)</p> <p>Birmingham Substance Misuse Recovery System– Review of first 12 months</p> <p>Update on Care Centres and Enhanced Assessment Beds</p> <p>Update on the Effects of Shisha Smoking</p>	<p>Denise McLellan, Managing Director</p> <p>John Denley, AD People Directorate, Nic Adamson, Director CRI</p> <p>Diana Morgan, AD Specialist Care Services / Alison Malik, Head of Service, Complex & Statutory Services, Commissioning Centre of Excellence</p> <p>Dr Adrian Phillips, Director of Public Health, Janet Bradley, Alcohol & Tobacco Control</p>
22 November 2016	<p>Update on Umbrella – the Sexual Health Services in Birmingham and Solihull Contract</p> <p>Sustainability & Transformation Plan - Briefing</p>	<p>Max Vaughan, Head of Service, Universal and Prevention</p> <p>Judith Davis, Project Director STP / John Wilderspin, Strategic Programme Director STP</p>
13 December 2016	<p>15/16 Local Performance Account Report</p> <p>West Midlands Challenge of Birmingham Adult Care</p>	<p>Alan Lotinga, Service Director Health & Wellbeing</p> <p>Alan Lotinga, Service Director Health & Wellbeing</p>
17 January 2017	<p>Tracking report for Household Recycling Centres</p> <p>Tracking report for From Waste to Resource – A Sustainable Strategy for 2019</p>	<p>Chloe Tringham, Fleet & Waste Management</p> <p>Jacqui Kennedy, Strategic Director – Place / Chloe Tringham, FWM</p>
21 February 2017		



28 March 2017		
25 April 2017	<p>Cabinet Member for Health and Social Care</p> <p>Cabinet Member for Clean Streets, Recycling & Environment</p>	<p>Cllr Paulette Hamilton / Suman McCartney</p> <p>Cllr Lisa Ticket / Jon Lawton</p>

Items to be scheduled in Work Programme

- Mental Health Strategy (To be confirmed)
- Housing Adaptations (To be confirmed)

Joint Birmingham & Sandwell Health Scrutiny Committee Work

Members	Cllrs John Cotton, Carole Griffiths, Kath Hartley, Deirdre Alden, Sue Anderson	
Meeting Date	Key Topics	Contacts
5 July 2016 at 2.00pm in Birmingham	<ul style="list-style-type: none"> • Right Care Right Here – Its Evolution (transition to the Black Country Sustainability & Transformation Plan) • Update on Sandwell and West Birmingham End of Life Care Service 	<p>Jayne Salter-Scott, Head of Engagement, SWBCCG</p> <p>Jon Dickens, Chief Operating Officer – Operations, SWBCCG, Sally Sandal, Senior Commissioning Officer</p>
TBA		



Joint Birmingham & Solihull Health Scrutiny Committee Work

Members	Cllrs John Cotton, Rob Pocock, Mohammed Idrees, Mick Brown, Uzma Ahmed, Andrew Hardie, Simon Jevon.	
Meeting Date	Key Topics	Contacts
27 July 2016 at 5.00pm in Birmingham	<ul style="list-style-type: none"> NHS Procedures of Lower Clinical Value – Solihull and Birmingham 	Gemma Caldecott, Senior External Communications & Engagement Manager, CROSSCITY CCG Neil Walker, Chief Contract & Performance Officer, Solihull CCG, Rhona Woosey, Network & Commissioning Manager, B'ham South Central CCG, Clinical Lead TBC
September/October in Solihull TBC	<ul style="list-style-type: none"> HoEFT <ul style="list-style-type: none"> Update on the performance/finance position Report on progress made on implementing plans Planned changes as a result of need to make savings to address deficit issues. 	Dame Julie Moore, Interim Chief Executive / Jacqui Smith, Interim Chair / Rachel Cashman, Project Director, Integration Programmes / Kevin Bolger, Interim Deputy Chief Executive, Improvement

West Midlands Regional Health Scrutiny Chairs Network

Meeting Date	Key Topics	Contacts
15 June 2016 10.00am	<p>The Work of the West Midlands Mental Health Commission</p> <p>Mental Health Service Provision – from a provider perspective</p>	<p>Steve Appleton Managing Director – Contact Consulting West Midlands Mental Health Commission Secretariat and Project Manager</p> <p>Sue Harris, Director of Strategy and Business Development Stephen Colman, Director of Operations</p>
5 October 2016 TBC	<p>Sustainability and Transformation Plans (STPs)</p> <p>Scrutiny and STPs</p>	Brenda Cooke, CfPS
November	Follow up on the Implementation of the West Midlands Combined Authority Mental Health Commission Recommendations	Rt Hon Norman Lamb MP, Chair of the Commission



CHAIR & COMMITTEE VISITS		
Date	Organisation	Contact
To be advised	West Midlands Ambulance Service – Visit to an Ambulance Hub.	Diane Scott, Deputy CEO
To be advised	Birmingham Substance Misuse Recovery System:- Visit to CRI premises, Scala House, Birmingham.	John Denley, AD Commissioning Centre of Excellence / Nic Adamson, Director CRI
7 September 2016	Visit to Norman Power and Ann Marie Howes Care Centres	Diana Morgan, AD Specialist Care Services

INQUIRY:	
Key Question:	
Lead Member:	
Lead Officer:	
Inquiry Members:	
Evidence Gathering:	
Drafting of Report:	
Report to Council:	
Councillor Call for Action requests	



Cabinet Forward Plan - Items in the Cabinet Forward Plan that may be of interest to the Committee

Item no.	Item Name	Portfolio	Proposed date
000298/2015	Public Health Grant Reduction	Health & Social Care	16 Feb 16
000355/2015	Purchase of a Home Support Visit Monitoring System Full Business Case and Contract Award - Public	Health & Social Care	28 Jun 16
001551/2016	Approval to Consult - Personal Budget Allocation System	Health & Social Care	22 Mar 16
002040/2016	Maximising Independence of Adults: Internal Care Service – Care Centres	Health & Social Care	26 Jul 16
000223/2015	Birmingham Community Energy Company – PUBLIC	Clean Streets, Recycling and the Environment	15 Jun 16
001506/2016	From Waste to Resource Strategy for Birmingham - Reduce Reuse Recycle	Clean Streets, Recycling and the Environment	28 Jun 16
001663/2016	Transition Regions Towards Industrial Symbiosis	Clean Streets, Recycling and the Environment	28 Jun 16
002078/2016	Waste Depots Modernisation Programme Phase 1 – Full Business Case PUBLIC	Clean Streets, Recycling and the Environment	20 Sep 16
002083/2016	Relocation of the City Council's Incinerator Bottom Ash (IBA) Plant	Clean Streets, Recycling and the Environment	26 Jul 16
002086/2016	Natural Rivers – Improving the ecological condition and habitat connectivity on the River Rea catchment	Clean Streets, Recycling and the Environment	15 Nov 16

