



Midland Metropolitan University Hospital

Building our future together

Useful information about Midland Met

Midland Metropolitan University Hospital will be our acute centre for care and includes:

- A purpose-built emergency department with linked X-ray and scanners
- A dedicated children's emergency department and assessment unit
- Adult and children's wards with 50 per cent en-suite single rooms
- Operating theatres for both emergency and major planned surgery
- A midwife led birth unit next to a delivery suite, two maternity wards and an antenatal clinic
- A neonatal unit
- Same day emergency care for adults, including the sickle cell and thalassemia centre.

You can expect to receive all of this as a standard part of our care model:

- A full seven-day service
- Dedicated acute care consultant led teams
- Protected diagnostic facilities for urgent care
- A clinical model focused on keeping patients mobile
- Our Winter Garden and outdoor spaces are designed to help patients stay active.

The benefits of our new hospital

- Midland Met will help to regenerate the immediate local area and create jobs. Regeneration opportunities exist to invest in the local area. Examples include community gardens, outdoor spaces and an arts programme, all accessible to residents.
- Patients who need to stay in hospital will be transferred around the new hospital via separate corridors and lifts to those used by visitors. It means patients will have privacy while moving around the hospital.
- The wards and rooms centre on patient wellbeing. All bedrooms have an external view onto one of the courtyards or surrounding areas of the hospital. The design also includes 50 per cent single rooms with en-suite shower rooms in the main ward areas which will reduce the risk of spreading infections.
- The hospital will house state-of-the-art equipment to support faster diagnosis and improve patient outcomes. It will be home to 11 emergency, trauma and elective inpatient operating theatres, 2 maternity theatres and 15 birthing rooms for maternity services.
- The hospital provides a dementia friendly environment. Colours and clear bed numbers will help patients identify where they are. Layouts of wards will be the same, with each group of four beds within a ward having a different colour theme. Non-patient rooms will have different doors (which will blend with corridor walls).

What's in MMUH?

Level 0 : car park, main entrance, facilities hub

Level 1: staff car park

Level 2: ED, AMU, Medical SDEC, Imaging, Cardiology

Level 3: Medical Day Unit, Maternity, Operating Theatres, Critical Care, Respiratory ward

Level 4: Children's services , Maternity wards

Level 5: Winter Garden with welcome centre, retail , restaurant, multi-faith centre & education

Levels 6-8: Three adult inpatient wards on each level

Level 9: Two adult inpatient wards and space for future expansion

Level 10: Engineering infrastructure

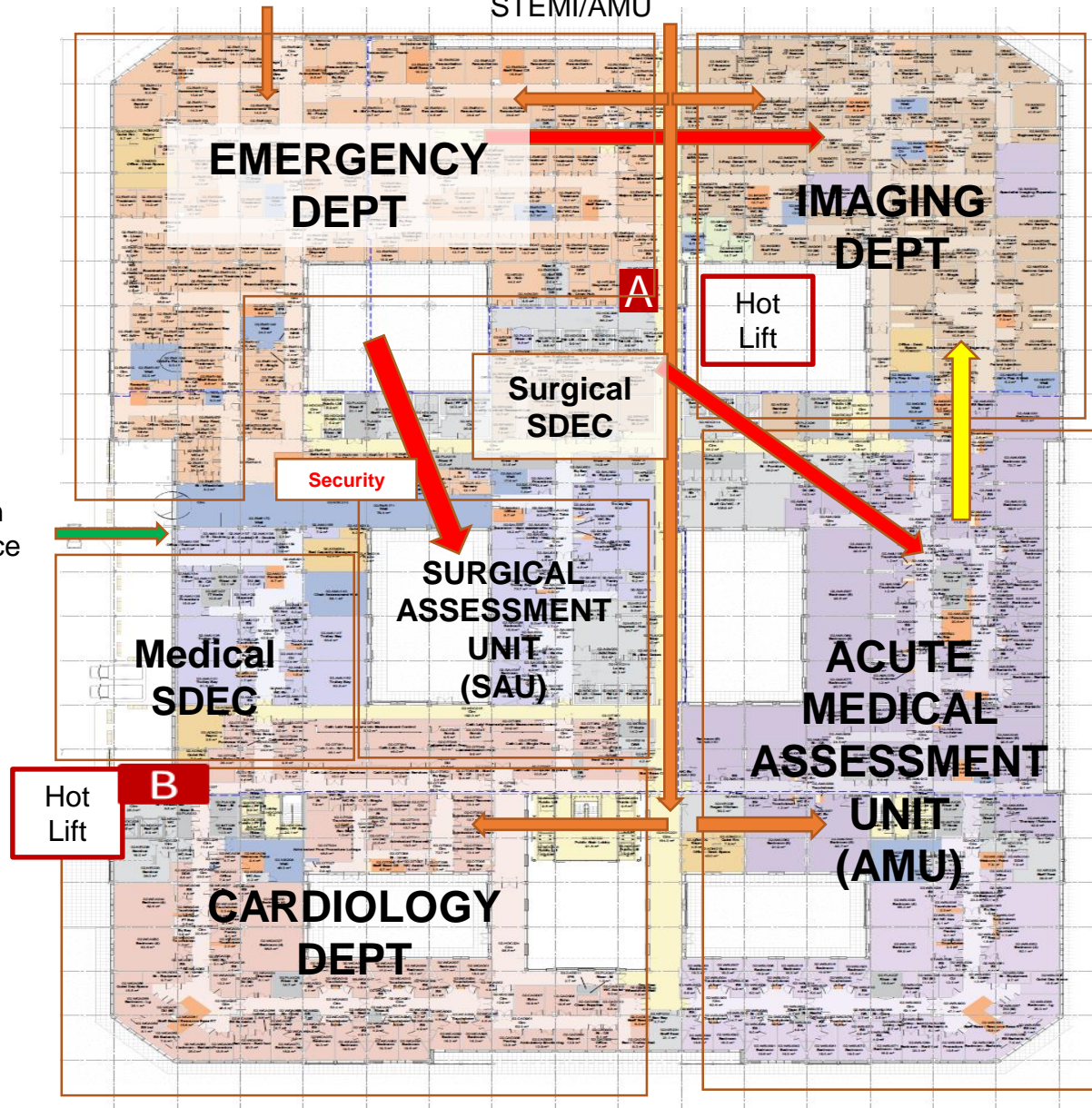
Public & elective patients will arrive at Level 0 & take a shuttle lift or stairs to Level 5 which will serve as the main way finding floor.

Emergency patients will arrive at Level 2 via ED, an Assessment Unit or Delivery Suite (dedicated lift to Level 3)

Ambulance blue light

Non blue light ambulances/Critical Care/ CCU
STEMI/AMU

Walk-in
entrance



Services on Level 2

Emergency Dept with zones for majors (inc. mental health rooms), minors, resus, ambulance Assessment, X ray rooms, children.

Separate ambulance and walk in entrances and receptions including dedicated children's entrance to children's ED zone.

Co-located Urgent Care.

Adjacent to external decontamination area, mental health assessment suite & hot lift (A) to Operating theatre dept & Intensive Care Unit

Security suite – adjacent to ED walk in entrance & wait
SAU X 23 trollies

Surgical Same Day Emergency Care (SDEC)

FM hubs - supplies management (goods delivery and waste removal)

Imaging

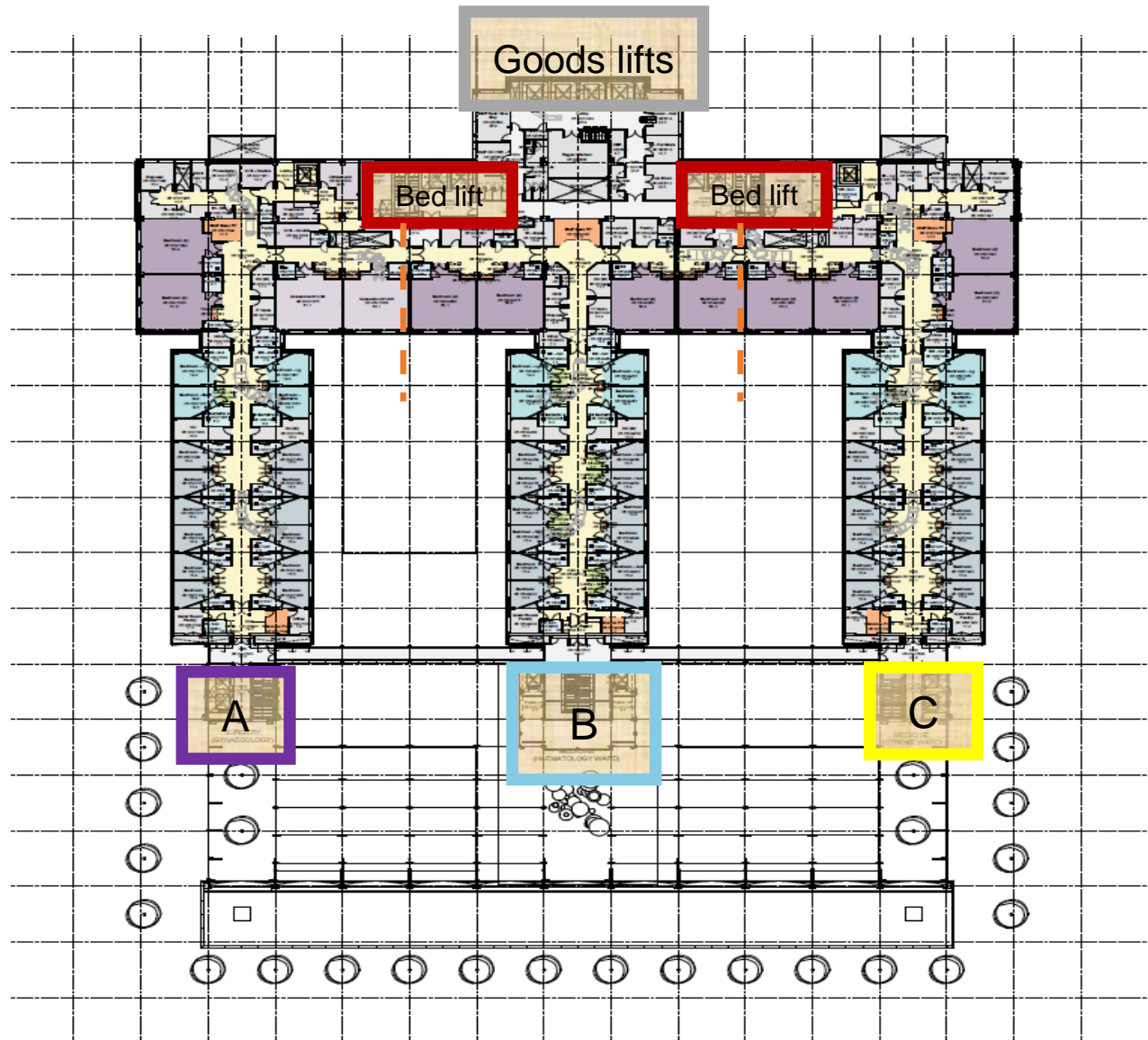
CT - adjacent to resus and ambulance entrance. MRI with adjacent expansion space. Plain Film, USS, Nuclear Med. External mobile docking area

AMU x 108 assessment beds

Medical SDEC x 24 trollies

CARDIOLOGY – A2 Cardiology ward x 32 bed Coronary care + post CCU beds. Direct access for STEMI patients. Cardiology Day Unit (Cath labs), Cardiology diagnostics rooms

Maternity hot lift (B) to Birthing Units



Services on Levels 6-9

3x 32 bed wards on levels 6-8 and 2 x 32 bed wards on level 9.

Generic Ward Layout includes:

- 16 single rooms with ensuite (incl. 2 bariatric rooms, 2 independent wheelchair user);
- 2 – 8 of the single rooms have isolation lobbies (depending on speciality);
- 4 bays of 4 beds – each bay with a shower room
- Procedure room
- Interview room
- Quiet/pt sitting room

Separation of patient, public and goods flows throughout the building including separate public entrance to clinical & goods entrance.

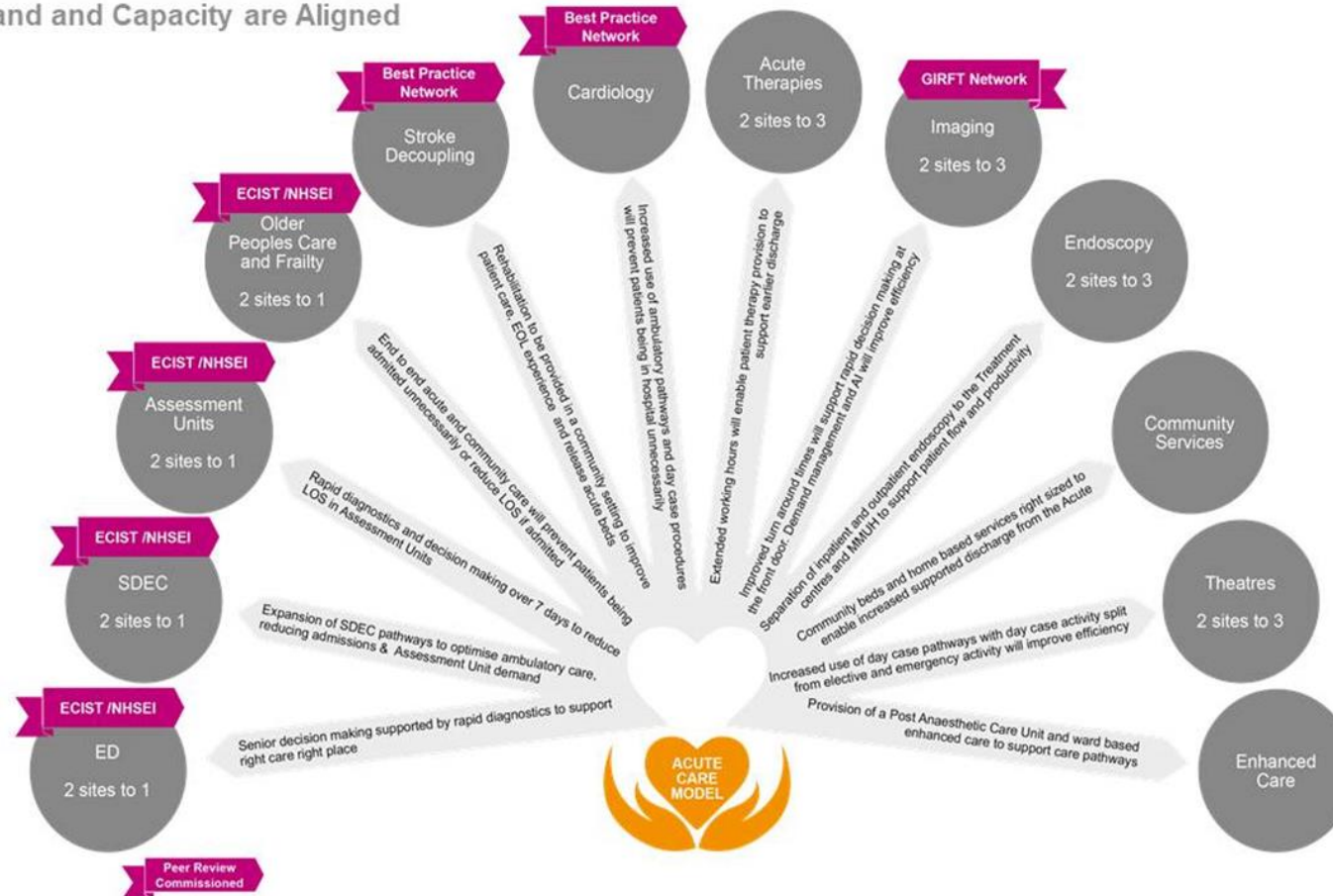
Staff can access departments via all lift cores.

Visitors restricted to public lift cores only and no access to clinical or goods corridors and lift cores.

Acute care models

Significant Transformation of Key Services will Improve Quality standards, Patient Outcomes, Patient Flow and Ensure Demand and Capacity are Aligned

Spotlight on pathways transformation



Our road to Midland Met



Welcome
to the Future

1

**TRANSFORMATION
PLANNING**
A period of controlled
change and planning

2

**TESTING AND
GETTING READY**
Putting our plans
into action

3

ALL ABOARD
Colleague orientation
and induction

4

**READY TO MOVE
CHECKPOINT**

5

**OUR FIRST
100 DAYS**

6

**OPTIMISING
FOR CONTINUED
SUCCESS**

Want to know more about our move to Midland Met?

- Visit our Midland Met pages on Connect - connect2.swbh.nhs.uk/mmu
- Email any questions to swbh.mmu@nhs.net
- Contact your clinical/operational leads for more information.

Key Milestones

December 2019

- Contract signed with Balfour Beatty as replacement construction partner in December

February 2020

- Start up work commenced with on site construction stepped up

July – February 2022

- Engagement with clinical teams on clinical models, workforce, and equipment

Spring 2022

- Begin changing services and getting ready

2023 and beyond

- Service transformation continues and matures
- MMUH Opens
- City main spine transfer to Homes England
- Complete Sandwell Treatment Centre development

Our arts programme

- The Midland Metropolitan University Hospital will deliver a unique model of care to improve health in the local area, with 700,000 patients and their families from the Sandwell and West Birmingham area set to benefit.
- We are investing in high quality arts, education, and heritage programmes to help enhance the experience of our patients. Your Trust Charity is helping our organisation play a major role in new community regeneration initiatives within our local communities.
- We're devising an exciting arts and culture programme with lots of great cultural partners for our opening festival. The hospital has the most amazing gallery space, one of the longest in the region.
- We have several programmes in development that imagines the hospital as a site for socially engaged art, a place for children beyond the classroom and a civic and community hub and garden.
- Our arts programme will provide opportunities for mutual learning, celebrating our creativity and resilience and co-designing our shared recovery as we look towards the future.

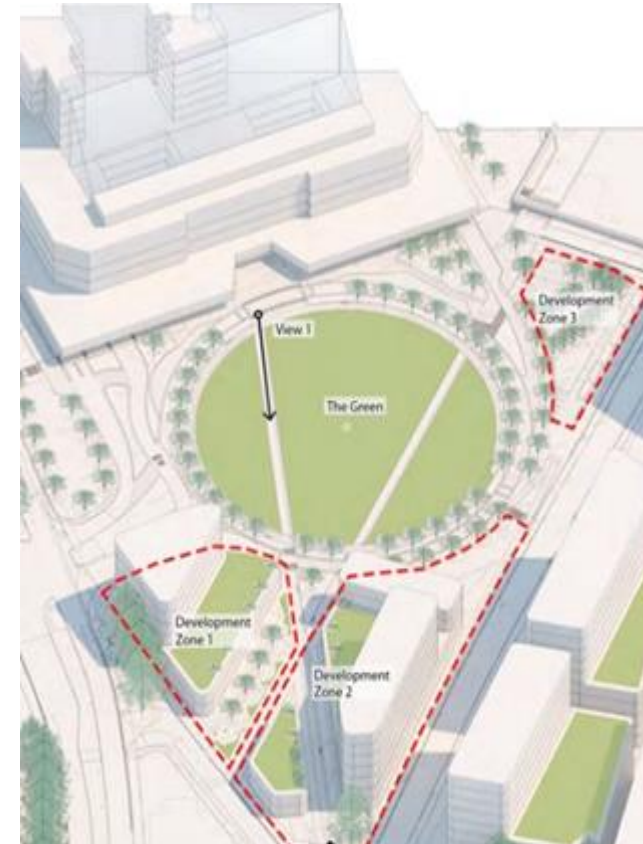
Regeneration investment: the current project impact & the catalyst for the future

- MMUH sits within a designated **regeneration zone**
- Trust using its position to influence what happens around the **anchor institution** which is a new hospital to maximise the benefits to the community
- **Town Fund bids** submitted by Trust in collaboration with other partners & approved for adjacent Learning Campus
- **Active Travel and Connectivity** is key – canal, walking and cycling, public transport
- Opportunities to promote **community facilities, education, employment, residential and hotel projects** across the wider masterplan area.
- Part of wider **Greater Icknield and Smethwick masterplan** – being developed in conjunction with WMCA, BCC, SMBC, C&RT and HE
- Focused on **wealth & health**



Midland Met Learning Campus

- The Midland Met Learning Campus is a collaboration between the Trust, Aston University, Sandwell College and University of Wolverhampton. Includes the Learning Works – a Trust organisation focused on helping the community and hard to reach groups access education and employment within the NHS.
- Will provide further and higher education for medical and allied health professionals and bring University level education to Smethwick
- Focus on areas of known skills shortages across Additional Clinical Services, Allied Health Professionals and Nursing and Midwifery. It will provide pathways into long term employment for residents and accelerate the delivery of transformational regeneration in an area which suffers from extensive deprivation and heavily impacted by the Covid-19.
- Circa 1280 Learners Assisted per annum across a range of short and longer term courses in 4000sqm of new purpose built education space.
- Gateway location at MMUH.
- Outline Planning application submitted Dec'21
- Circa £16m, majority expected to be funded by Towns Fund – planned to be operational late 2024.



Supporting We Are Metropolitan

- Your Trust Charity is the registered charity of Sandwell and West Birmingham NHS Trust. We are passionate about making a difference in people's lives and working hard to deliver a fundraising campaign that encapsulates everything our new flagship hospital, the Midland Metropolitan University Hospital, has to offer.
- Building a world-class healthcare facility is no easy feat. Hospitals need to meet the healthcare needs of the communities they serve. Plus, they need to stand up to all the challenges of modern life and offer patients, colleagues, and visitors the facilities they deserve as standard and so much more.
- Working hand in hand with our communities, our fundraising campaign, We Are Metropolitan, strives to enhance the experience of all people using our services.
- Our fundraising campaign will support these three key areas at Midland Met:
 1. The development of community spaces
 2. Creating a healing environment
 3. Enhanced research and development.