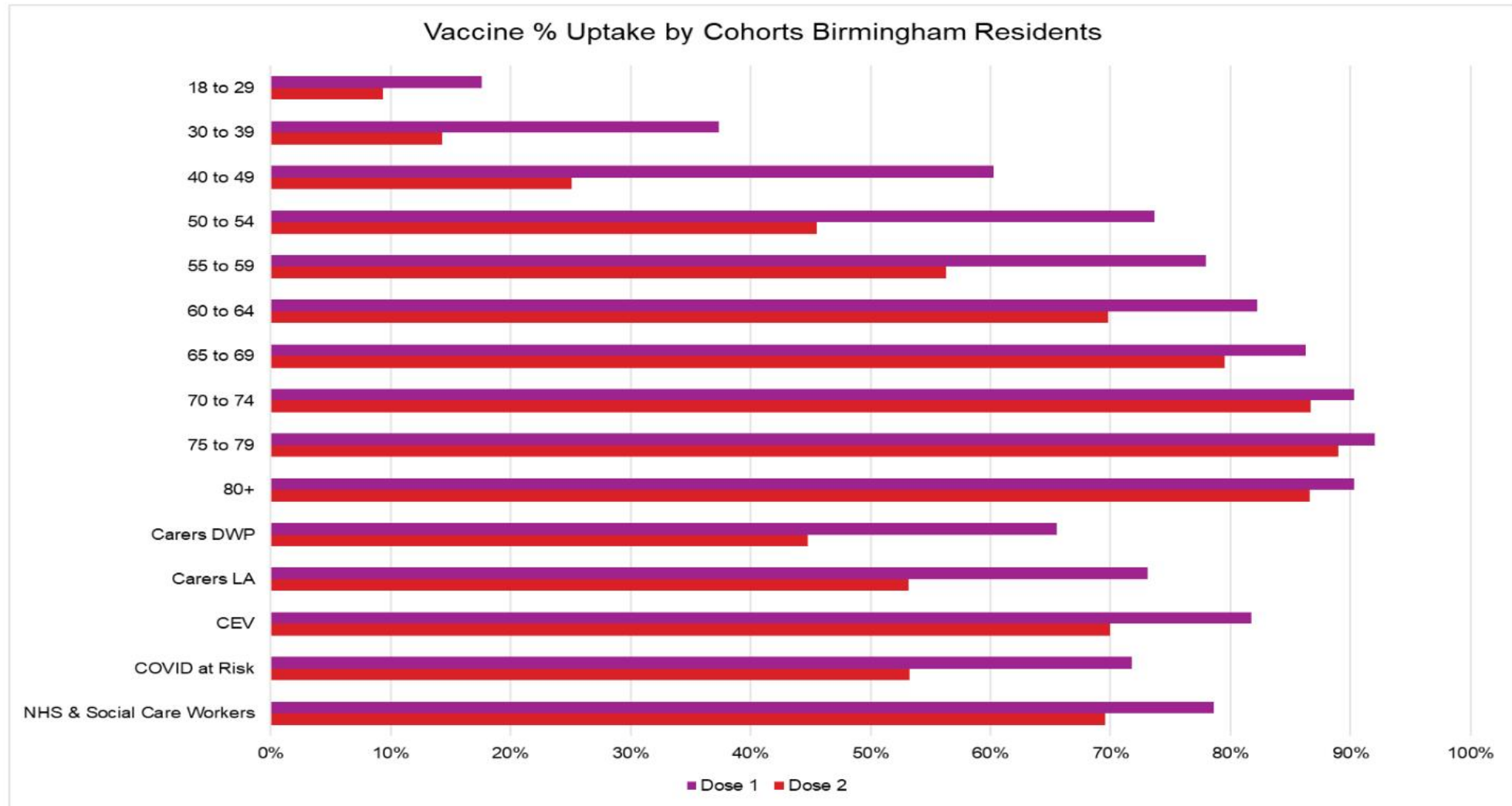


# Covid Vaccination Overview

Data extracted on 01/06/2021



# Uptake by Cohort in Birmingham Residents – NIMS Data (Extracted 01/06/21)



# Priority Groups currently being called for vaccination: 1<sup>st</sup> dose

Priority	Risk group	% First Dose Uptake				
		NHS Birmingham & Solihull		NHS Sandwell & West Birmingham		Birmingham
		Total	Birmingham	Total	Birmingham	
1	Residents in a care home for older adults and staff working in care homes for older adults	N/A on NIMS				
2	All those 80 years of age and over	92.8%	91.5%	89.4%	81.4%	90.3%
	Frontline health and social care workers *	81.7%	80.4%	75.2%	67.4%	78.6%
3	All those 75 years of age and over	94.0%	93.0%	90.9%	84.2%	92.0%
4	All those 70 years of age and over	92.7%	91.5%	89.2%	80.6%	90.3%
	Clinically extremely vulnerable individuals (not including pregnant women and those under 16 years of age)	84.8%	83.2%	82.8%	74.6%	81.7%
5	All those 65 years of age and over	89.7%	88.1%	85.2%	74.4%	86.3%
	COVID At Risk	76.7%	74.2%	73.3%	60.0%	71.8%
6	All those 60 years and over	86.6%	84.6%	80.9%	67.9%	82.2%
7	All those 55 years of age and over	83.1%	80.7%	76.7%	62.3%	77.9%
8	All those 50 years of age and over	79.0%	76.3%	73.6%	59.7%	73.7%
	All those 40 years of age and over	66.4%	63.1%	60.7%	46.8%	60.2%
	All those 30 years of age and over	43.0%	40.6%	34.4%	24.4%	37.3%

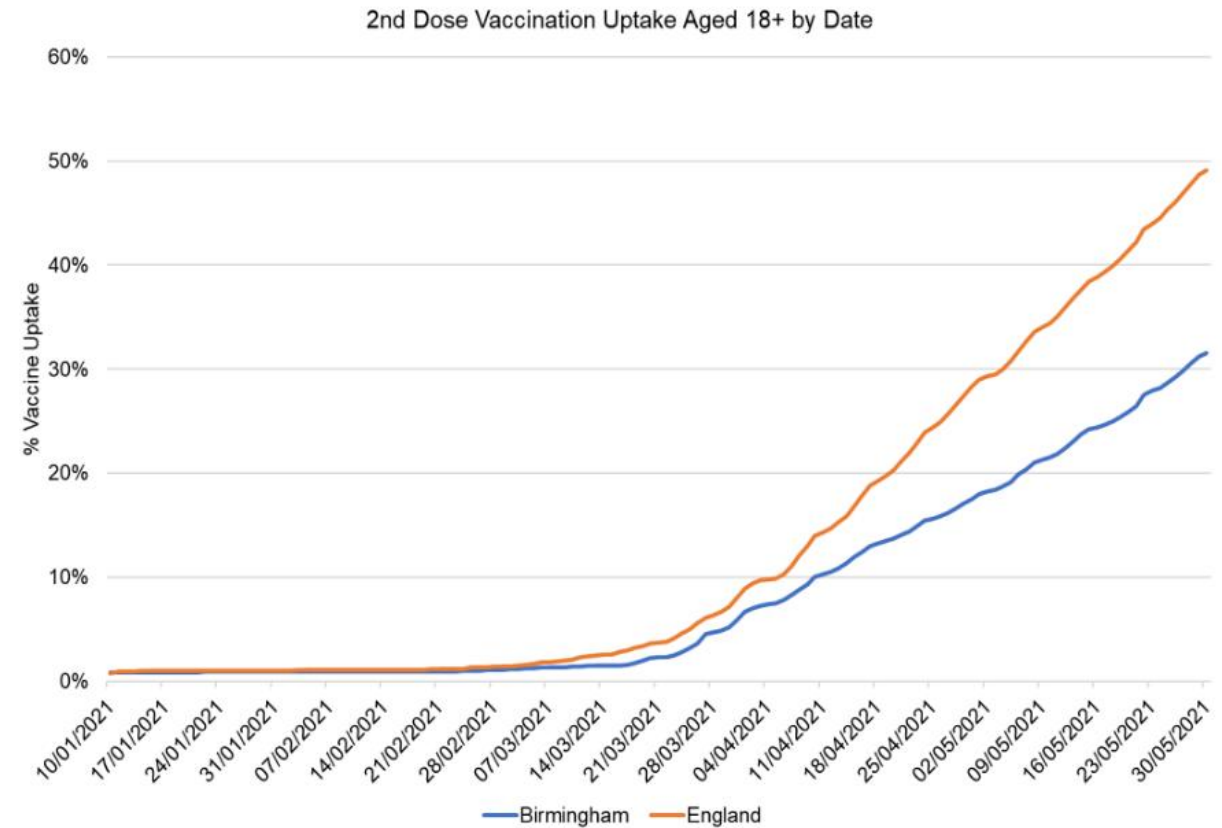
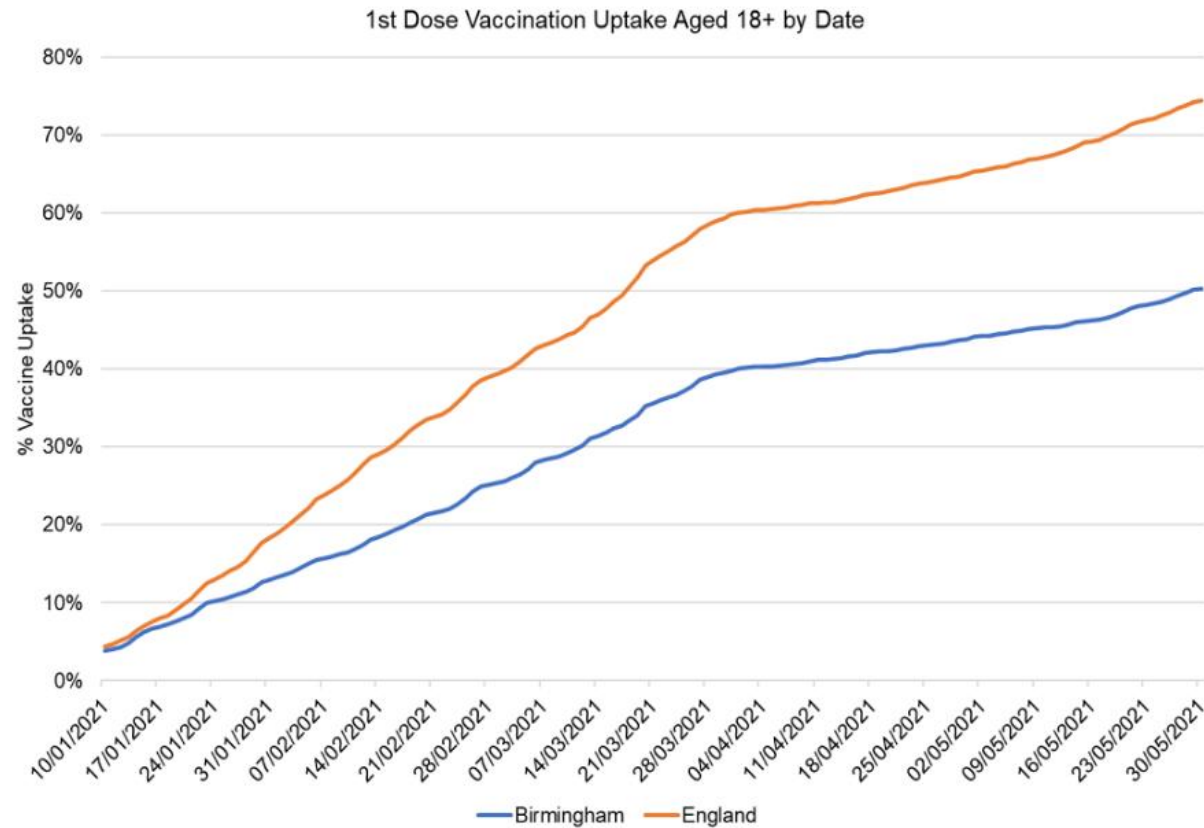
\* Current significant data issues in denominator definition

# Priority Groups currently being called for vaccination: 2<sup>nd</sup> dose

Priority	Risk group	% Second Dose Uptake				
		NHS Birmingham & Solihull		NHS Sandwell & West Birmingham		Birmingham
		Total	Birmingham	Total	Birmingham	
1	Residents in a care home for older adults and staff working in care homes for older adults	N/A on NIMS				
2	All those 80 years of age and over	89.9%	88.0%	85.5%	75.9%	86.6%
	Frontline health and social care workers *	73.4%	71.8%	64.6%	55.3%	69.5%
3	All those 75 years of age and over	91.5%	90.0%	87.8%	79.7%	88.9%
4	All those 70 years of age and over	89.9%	88.1%	85.5%	75.2%	86.7%
	Clinically extremely vulnerable individuals (not including pregnant women and those under 16 years of age)	74.4%	71.7%	72.1%	61.0%	69.9%
5	All those 65 years of age and over	84.0%	81.6%	78.3%	65.6%	79.5%
	COVID At Risk	59.0%	55.8%	53.3%	40.3%	53.3%
6	All those 60 years and over	75.7%	72.7%	67.4%	52.7%	69.8%
7	All those 55 years of age and over	62.1%	59.6%	50.1%	38.1%	56.3%
8	All those 50 years of age and over	50.2%	48.2%	40.9%	30.7%	45.5%
	All those 40 years of age and over	27.7%	26.9%	22.0%	16.5%	25.1%
9	All those 30 years of age and over	16.1%	15.5%	13.5%	9.5%	14.3%

\* Current significant data issues in denominator definition

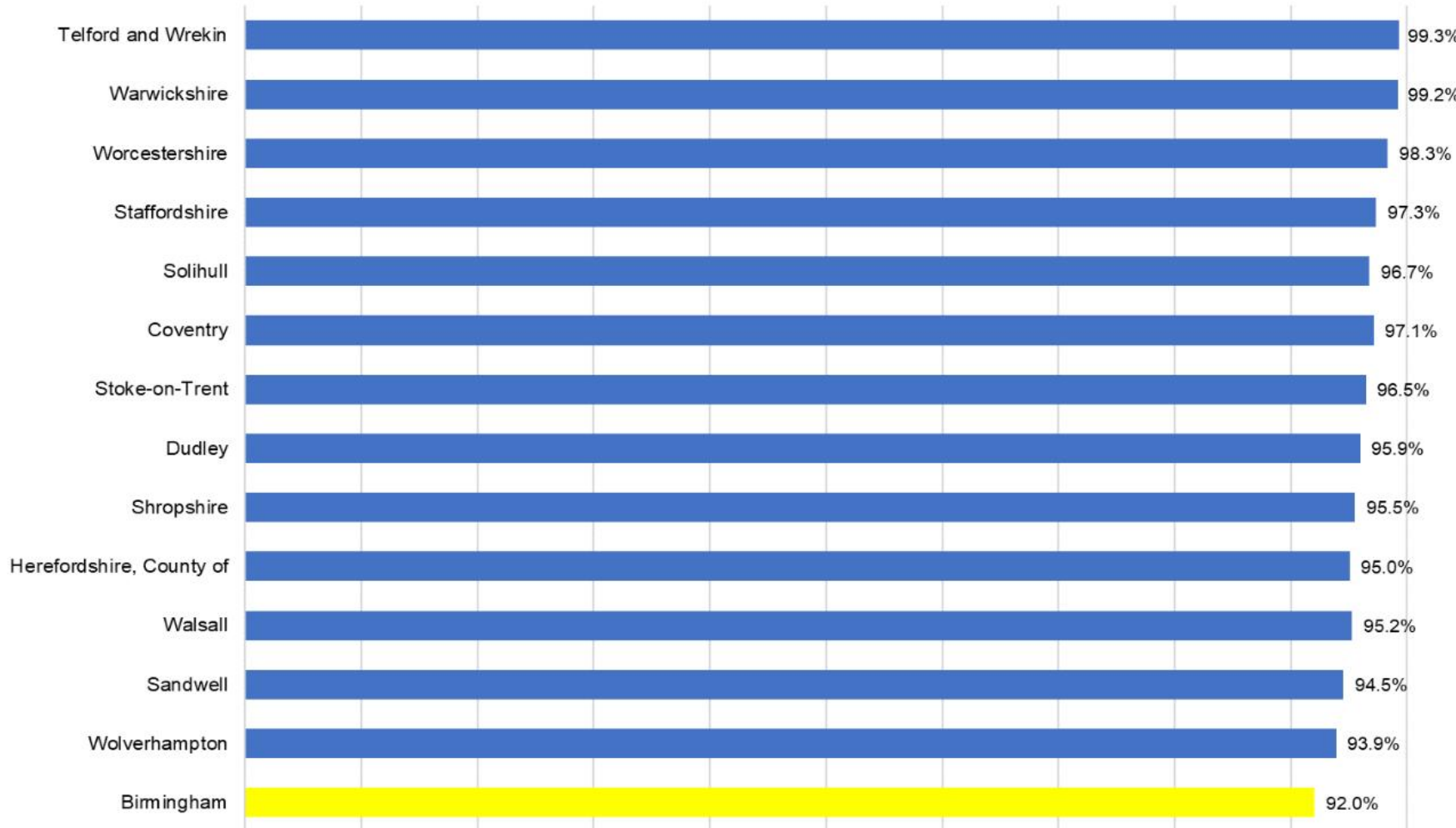
# Uptake by Date of Vaccination



Uptake of 1<sup>st</sup> dose has slowed since mid March whilst uptake of 2<sup>nd</sup> dose has accelerated. The rate of uptake in Birmingham is behind the national average for 1<sup>st</sup> and 2<sup>nd</sup> doses.

# Uptake in Birmingham vs West Midlands Local Authorities

% 1st Dose Uptake in Population Aged 50+ by West Midlands LA as of 23/05/21



Uptake in of 1<sup>st</sup> dose in the population aged 50+ is lowest in Birmingham when compared with all West Midlands local authorities.

Data Source: NHS  
<https://www.england.nhs.uk/statistics/statistical-work-areas/covid-19-vaccinations/>



# Vaccine Uptake by Ward

## -40 with lowest uptake

- Vaccine uptake is low in some wards that have observed the highest case rates since the start of the pandemic.
- The following wards have low vaccine uptake and high case rates:
  - Newtown
  - Soho & Jewellery Quarter
  - Aston
  - Lozells
  - Birchfield
  - Sparkbrook & Balsall Heath East
  - Small Heath
  - Sparkhill
  - Ward End
  - Heartlands

Ward Name	Total Uptake 18+	Total Uptake 50+	Case Rate
Newtown	25.8%	57.3%	9,828
Bournbrook & Selly Park	28.1%	83.9%	8,846
Nechells	28.9%	65.9%	7,679
Ladywood	29.1%	65.0%	7,299
Bordesley & Highgate	30.0%	64.8%	7,556
Soho & Jewellery Quarter	30.4%	60.7%	10,172
Holyhead	30.4%	58.9%	9,338
Bordesley Green	32.1%	63.5%	10,007
Birchfield	32.7%	62.7%	10,664
Alum Rock	32.7%	64.8%	11,065
Sparkbrook & Balsall Heath East	32.9%	65.1%	11,453
Aston	33.0%	64.9%	10,703
Handsworth	34.2%	63.1%	9,604
Lozells	34.2%	65.4%	13,467
Small Heath	34.6%	69.3%	11,016
Balsall Heath West	35.4%	69.9%	9,850
Edgbaston	35.7%	79.9%	8,917
Sparkhill	36.2%	69.1%	11,551
Heartlands	36.8%	69.9%	11,806
Ward End	37.2%	70.6%	11,104
North Edgbaston	37.3%	66.5%	9,402
Gravelly Hill	43.6%	75.5%	9,103
Tyseley & Hay Mills	43.6%	77.6%	9,043
Stockland Green	45.8%	77.3%	8,379
Yardley West & Stechford	47.8%	81.7%	10,062
Bromford & Hodge Hill	48.5%	83.4%	11,578
Handsworth Wood	49.3%	79.1%	11,514
Glebe Farm & Tile Cross	50.0%	82.5%	9,600
Perry Barr	50.5%	81.9%	9,447
Garretts Green	51.6%	82.2%	9,504
Acocks Green	53.0%	83.0%	9,972
Weoley & Selly Oak	53.2%	84.7%	7,781
Hall Green North	55.6%	84.4%	10,884
Shard End	56.7%	87.8%	9,934
Castle Vale	57.2%	87.2%	9,223
Moseley	57.2%	82.5%	8,317
Kingstanding	57.5%	84.5%	8,693
Harborne	57.7%	84.0%	6,217
Bartley Green	58.6%	86.9%	7,595
Erdington	58.7%	84.9%	8,395

# North Locality

Ward Name	% uptake of 1st Dose of Covid Vaccination data extracted 01/06										Carers - LA	Carers - DWP
	Over 80yr olds	75-79yrs	70-74yrs	65-69yrs	60-64yrs	55-59yrs	50-54yrs	40-49yrs	CEV	COVID at Risk		
Castle Vale	92.1%	94.9%	93.0%	92.3%	87.5%	84.6%	81.6%	67.3%	88.9%	80.1%	77.5%	69.0%
Erdington	93.4%	94.7%	91.8%	89.0%	83.5%	79.1%	77.5%	64.9%	86.9%	77.8%	76.5%	67.2%
Gravelly Hill	87.9%	89.6%	87.3%	81.9%	75.6%	72.2%	67.7%	52.7%	80.9%	68.5%	73.6%	67.3%
Kingstanding	88.9%	93.7%	90.5%	89.7%	84.7%	82.3%	77.7%	69.2%	86.9%	77.1%	76.4%	73.2%
Perry Common	91.7%	93.4%	90.1%	89.7%	86.0%	81.0%	79.1%	65.6%	85.1%	74.9%	78.0%	71.5%
Pype Hayes	91.8%	93.4%	91.3%	88.8%	87.3%	81.7%	78.7%	66.1%	88.0%	77.8%	74.8%	68.6%
Stockland Green	87.8%	89.3%	87.8%	84.1%	79.0%	73.0%	68.4%	55.1%	80.8%	69.3%	75.8%	66.0%
Sutton Four Oaks	95.9%	97.6%	96.0%	95.8%	92.7%	93.7%	92.8%	85.4%	96.9%	90.8%	82.6%	85.5%
Sutton Mere Green	97.2%	98.0%	96.4%	95.9%	92.2%	91.7%	92.4%	86.5%	94.3%	89.7%	88.5%	86.4%
Sutton Reddicap	93.7%	97.5%	94.7%	91.5%	90.4%	87.3%	86.6%	78.8%	92.4%	84.2%	85.9%	67.7%
Sutton Roughley	96.1%	97.0%	96.6%	95.1%	92.9%	93.0%	90.7%	84.6%	95.2%	91.1%	89.6%	78.8%
Sutton Trinity	97.2%	94.1%	95.6%	94.4%	92.7%	89.2%	89.4%	81.7%	94.9%	89.5%	89.5%	75.8%
Sutton Vesey	95.8%	95.7%	96.4%	93.7%	91.3%	88.5%	86.8%	83.1%	93.7%	87.2%	87.4%	77.8%
Sutton Walmley & Minworth	95.1%	95.6%	96.8%	95.4%	93.3%	90.0%	88.7%	83.3%	94.2%	89.7%	84.5%	79.1%
Sutton Wylde Green	96.9%	95.8%	95.9%	94.4%	92.8%	90.8%	89.7%	83.1%	94.8%	88.5%	93.3%	90.7%



# East Locality

Ward Name	% uptake of 1st Dose of Covid Vaccination data extracted 01/06										Carers - LA	Carers - DWP
	Over 80yr olds	75-79yrs	70-74yrs	65-69yrs	60-64yrs	55-59yrs	50-54yrs	40-49yrs	CEV	COVID at Risk		
Acocks Green	92.1%	91.6%	90.1%	85.7%	83.5%	81.1%	76.8%	61.6%	84.4%	75.5%	73.2%	71.4%
Alum Rock	71.4%	76.1%	77.4%	71.4%	70.3%	62.8%	60.2%	47.0%	69.8%	57.2%	66.7%	57.5%
Bromford & Hodge Hill	93.2%	93.8%	91.1%	88.6%	83.0%	79.9%	72.3%	58.6%	79.8%	69.4%	70.7%	63.2%
Garretts Green	90.1%	92.1%	90.9%	83.6%	80.4%	79.6%	77.2%	63.1%	83.4%	72.6%	74.8%	66.4%
Glebe Farm & Tile Cross	91.3%	92.1%	88.8%	88.3%	81.1%	79.6%	73.8%	60.4%	77.9%	70.1%	69.3%	63.4%
Heartlands	81.0%	83.6%	79.9%	77.1%	70.8%	65.1%	67.0%	52.3%	74.1%	63.2%	73.2%	58.8%
Shard End	93.5%	94.2%	94.6%	90.4%	90.4%	83.2%	81.7%	66.3%	88.0%	77.9%	70.4%	67.6%
Sheldon	94.0%	96.0%	94.1%	93.0%	89.6%	86.7%	84.4%	73.3%	87.6%	81.4%	78.2%	71.9%
Small Heath	78.4%	82.8%	79.7%	77.7%	75.7%	64.5%	64.4%	49.4%	75.7%	62.1%	65.9%	62.9%
South Yardley	92.6%	94.7%	91.5%	90.2%	87.7%	84.5%	81.6%	70.6%	84.0%	79.8%	85.4%	77.0%
Tyseley & Hay Mills	84.4%	86.6%	85.9%	82.8%	80.9%	78.0%	69.6%	55.0%	81.5%	70.3%	70.0%	66.5%
Ward End	84.3%	83.4%	76.5%	80.2%	73.1%	67.0%	64.5%	51.4%	72.6%	62.6%	61.9%	59.4%
Yardley East	94.4%	95.4%	95.1%	91.4%	90.9%	85.0%	83.3%	66.9%	87.7%	77.9%	77.4%	73.1%
Yardley West & Stechford	89.6%	91.9%	90.1%	87.0%	85.8%	77.3%	71.8%	60.6%	81.4%	70.5%	71.8%	67.7%

# South Locality

	% uptake of 1st Dose of Covid Vaccination data extracted 01/06											
Ward Name	Over 80yr olds	75-79yrs	70-74yrs	65-69yrs	60-64yrs	55-59yrs	50-54yrs	40-49yrs	CEV	COVID at Risk	Carers - LA	Carers - DWP
Allens Cross	94.9%	94.7%	93.3%	91.7%	88.1%	83.0%	80.7%	69.8%	89.2%	81.3%	82.4%	67.6%
Bartley Green	91.9%	95.5%	94.2%	89.1%	86.9%	83.0%	78.9%	66.1%	85.2%	76.9%	80.1%	71.7%
Edgbaston	88.7%	89.0%	89.8%	83.7%	76.1%	75.7%	70.4%	45.3%	84.1%	72.8%	76.7%	58.0%
Frankley Great Park	95.0%	96.7%	95.3%	91.1%	91.0%	85.1%	80.2%	73.7%	87.1%	78.3%	78.4%	65.5%
Harborne	92.5%	92.2%	91.5%	88.8%	82.4%	80.7%	74.1%	62.7%	86.5%	78.2%	83.4%	66.0%
King's Norton North	95.3%	94.8%	94.6%	91.6%	89.5%	87.9%	83.6%	73.3%	89.5%	82.0%	81.7%	64.2%
King's Norton South	94.9%	94.0%	92.6%	88.5%	86.6%	82.5%	77.8%	67.9%	86.6%	74.8%	76.8%	63.4%
Longbridge & West Heath	96.2%	94.9%	94.6%	92.1%	90.4%	87.3%	84.1%	75.0%	91.3%	79.7%	85.3%	68.9%
Northfield	95.9%	98.1%	96.5%	91.0%	91.8%	90.0%	85.6%	78.6%	90.7%	84.2%	86.7%	73.6%
Quinton	93.1%	94.1%	92.1%	89.6%	88.2%	84.6%	81.8%	70.0%	87.9%	80.4%	80.1%	71.4%
Rubery & Rednal	94.4%	97.3%	94.7%	90.8%	88.8%	86.5%	83.3%	72.7%	88.9%	78.7%	79.3%	64.1%
Weoley & Selly Oak	94.9%	93.6%	91.0%	87.6%	84.1%	81.2%	75.9%	59.7%	86.7%	75.6%	76.5%	65.7%

# West Locality

Ward Name	% uptake of 1st Dose of Covid Vaccination data extracted 01/06										Carers - LA	Carers - DWP
	Over 80yr olds	75-79yrs	70-74yrs	65-69yrs	60-64yrs	55-59yrs	50-54yrs	40-49yrs	CEV	COVID at Risk		
Aston	76.5%	80.2%	73.7%	73.3%	67.6%	60.0%	61.0%	47.8%	75.0%	59.1%	64.6%	61.4%
Birchfield	74.2%	80.6%	80.4%	71.6%	62.1%	57.2%	58.3%	42.3%	71.5%	55.9%	61.9%	57.3%
Bordesley & Highgate	76.0%	78.6%	80.9%	69.9%	68.0%	62.7%	59.4%	47.8%	69.4%	54.8%	62.5%	55.8%
Bordesley Green	78.2%	76.7%	76.2%	71.3%	68.8%	59.2%	58.7%	45.9%	71.5%	58.9%	61.4%	60.2%
Handsworth	75.8%	84.8%	82.7%	74.9%	62.5%	57.1%	58.7%	47.3%	77.3%	59.1%	63.1%	60.1%
Handsworth Wood	88.6%	87.4%	87.6%	86.3%	78.0%	75.7%	71.3%	56.7%	82.4%	69.6%	71.6%	65.3%
Holyhead	80.0%	80.2%	71.4%	67.6%	62.7%	55.8%	50.2%	40.8%	74.7%	56.6%	60.7%	50.2%
Ladywood	80.8%	77.3%	75.5%	69.8%	67.4%	63.8%	59.1%	44.2%	71.9%	61.4%	60.4%	55.7%
Lozells	79.2%	77.4%	81.1%	73.0%	63.1%	62.8%	62.8%	53.3%	77.5%	55.5%	65.6%	67.8%
Nechells	78.2%	82.3%	86.6%	72.3%	69.5%	62.6%	57.3%	50.7%	72.1%	59.8%	62.5%	62.2%
Newtown	76.0%	76.4%	68.4%	62.4%	57.1%	54.2%	53.1%	42.8%	63.9%	47.6%	52.5%	55.6%
North Edgbaston	78.3%	87.4%	83.7%	77.2%	67.3%	62.6%	56.6%	45.9%	74.4%	62.7%	60.9%	57.4%
Oscott	94.2%	92.0%	91.7%	91.1%	87.4%	85.7%	83.5%	72.7%	88.0%	80.5%	76.6%	73.7%
Perry Barr	90.9%	94.1%	90.5%	84.1%	82.6%	75.4%	72.6%	58.8%	82.5%	70.8%	72.8%	67.2%
Soho & Jewellery Quarter	76.6%	80.9%	76.0%	68.2%	64.3%	56.1%	54.9%	43.8%	71.8%	56.2%	64.9%	56.9%

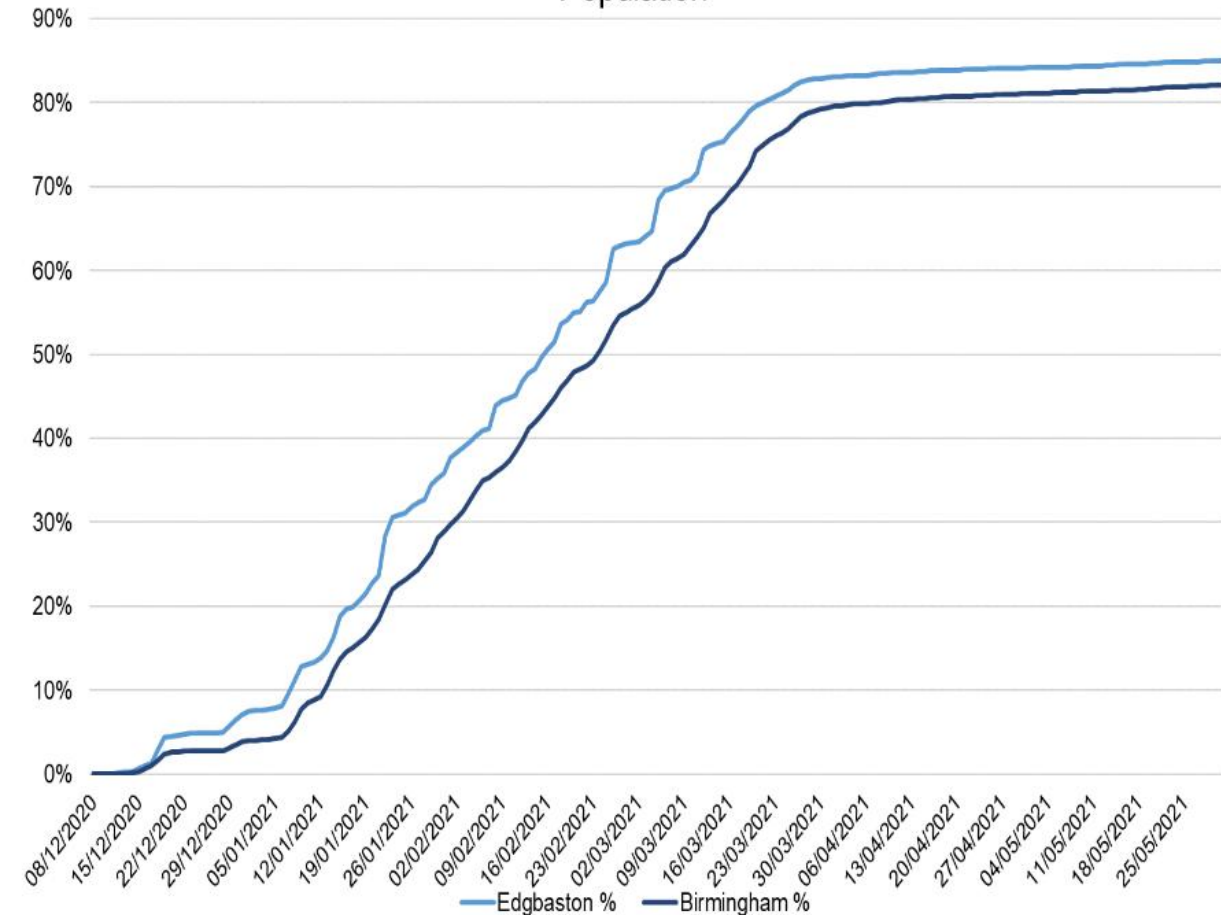


# Central Locality

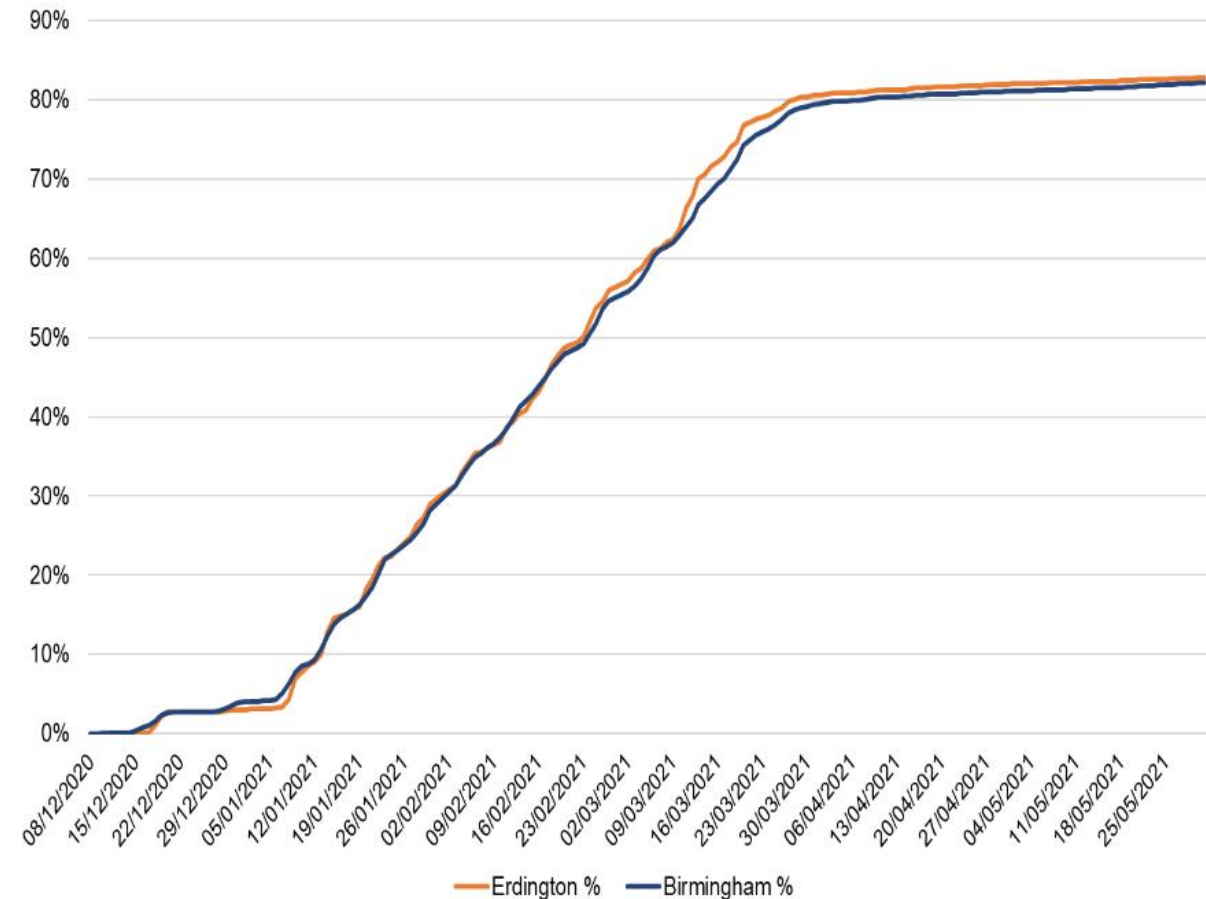
Ward Name	% uptake of 1st Dose of Covid Vaccination data extracted 01/06										Carers - LA	Carers - DWP
	Over 80yr olds	75-79yrs	70-74yrs	65-69yrs	60-64yrs	55-59yrs	50-54yrs	40-49yrs	CEV	COVID at Risk		
Balsall Heath West	78.2%	89.4%	82.3%	75.2%	72.7%	65.5%	62.0%	48.7%	74.2%	56.3%	51.3%	65.0%
Billesley	94.0%	93.2%	91.1%	88.4%	88.3%	81.9%	78.6%	70.4%	87.0%	78.0%	74.3%	69.3%
Bournbrook & Selly Park	93.8%	94.9%	93.4%	92.6%	83.5%	82.2%	69.7%	41.0%	86.5%	75.4%	72.6%	64.7%
Bournville & Cotteridge	94.4%	96.2%	94.9%	91.4%	91.1%	85.5%	83.8%	73.6%	90.2%	84.1%	80.4%	67.6%
Brandwood & King's Heath	93.5%	93.4%	91.4%	90.9%	86.8%	86.5%	82.6%	73.5%	88.1%	80.5%	83.8%	70.7%
Druids Heath & Monyhull	95.8%	92.9%	92.4%	90.9%	89.4%	82.0%	81.6%	73.0%	89.1%	76.0%	83.9%	68.4%
Hall Green North	90.1%	92.4%	93.4%	89.1%	84.2%	82.9%	74.8%	65.4%	84.0%	71.6%	71.9%	67.8%
Hall Green South	94.8%	96.2%	96.6%	93.1%	90.1%	88.9%	86.1%	78.8%	90.0%	83.9%	88.5%	82.5%
Highter's Heath	92.6%	95.2%	92.8%	93.4%	89.2%	89.0%	87.4%	74.2%	89.9%	82.4%	80.7%	69.8%
Moseley	90.7%	91.5%	89.8%	88.3%	82.5%	78.0%	73.0%	64.4%	82.5%	72.0%	72.3%	63.0%
Sparkbrook & Balsall Heath East	73.0%	78.3%	76.5%	75.2%	69.5%	63.0%	58.3%	46.3%	71.4%	54.2%	60.1%	55.5%
Sparkhill	81.9%	81.4%	76.9%	77.3%	70.0%	67.2%	61.4%	48.4%	73.9%	58.3%	66.0%	61.2%
Stirchley	93.0%	94.5%	91.1%	88.7%	88.4%	82.7%	82.7%	71.8%	88.7%	79.4%	81.5%	68.8%

# Uptake Progress by Constituency

Covid Vaccination % 1st Dose Uptake by Constituency in Age 50+ Population



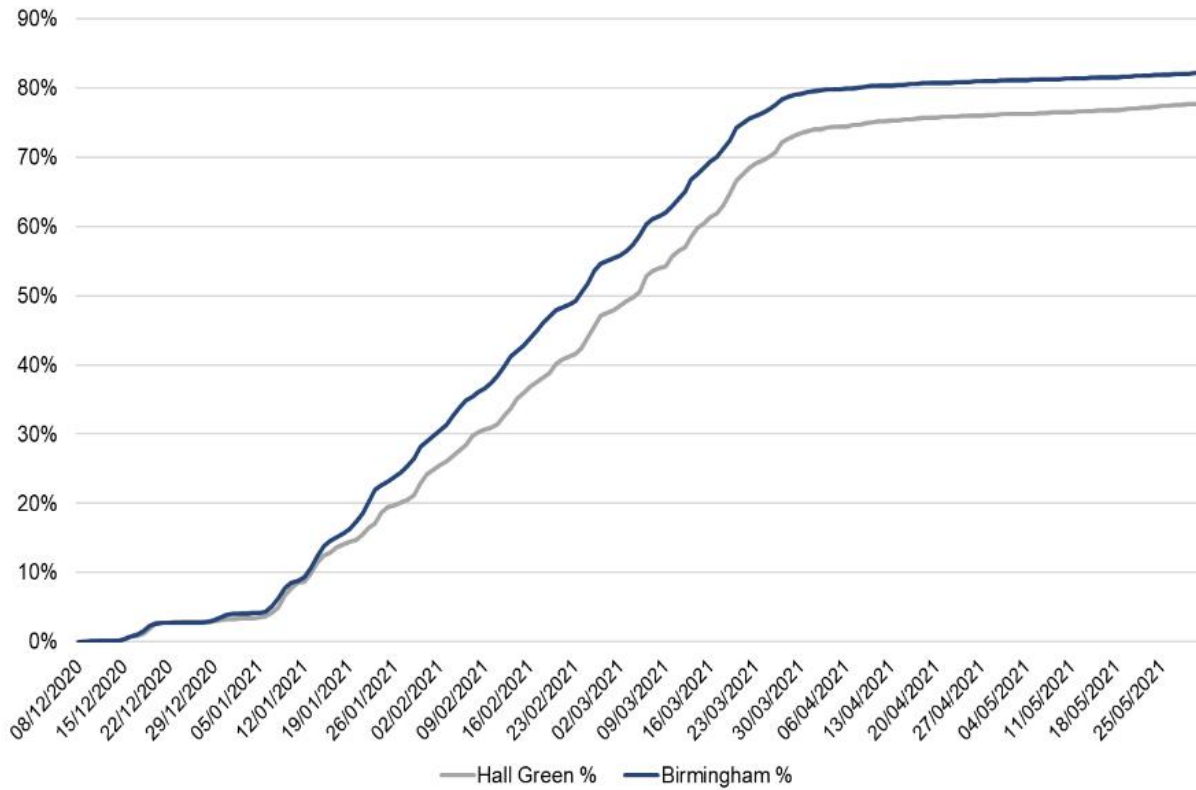
Covid Vaccination % 1st Dose Uptake by Constituency in Age 50+ Population



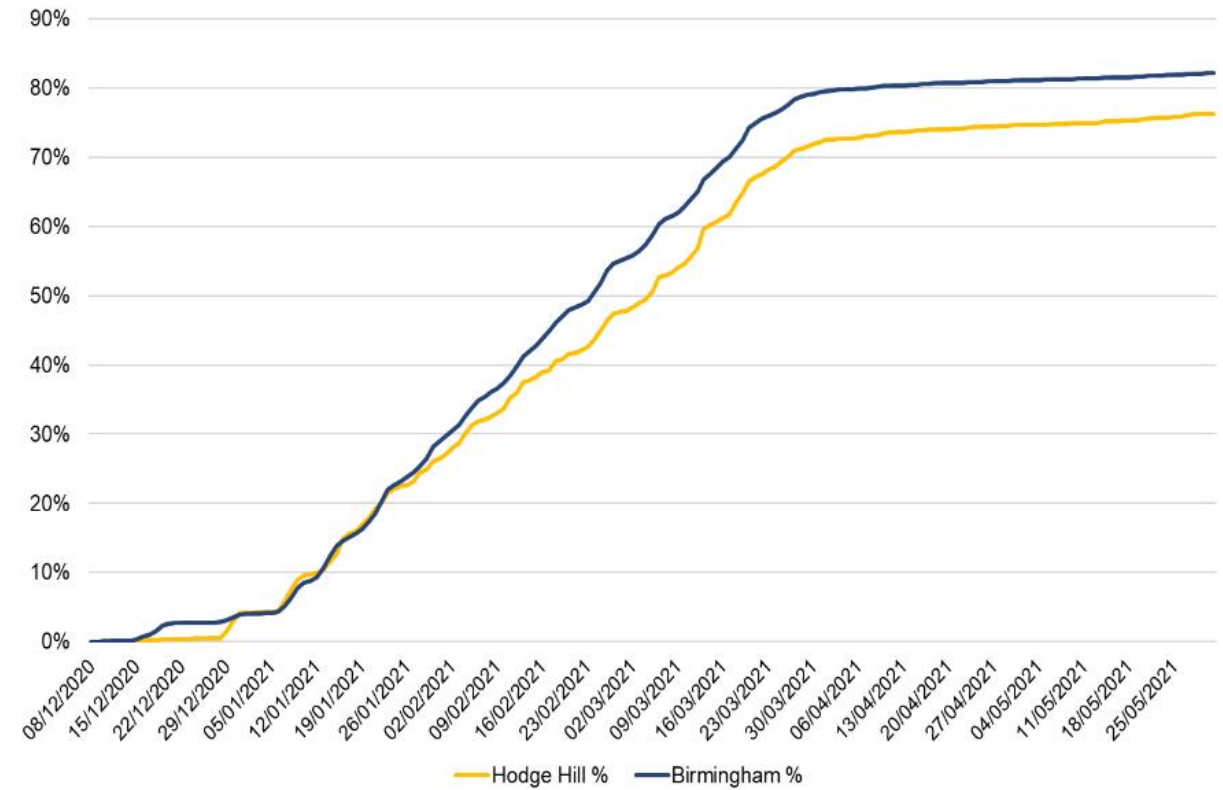


# Uptake Progress by Constituency

Covid Vaccination % 1st Dose Uptake by Constituency in Age 50+ Population

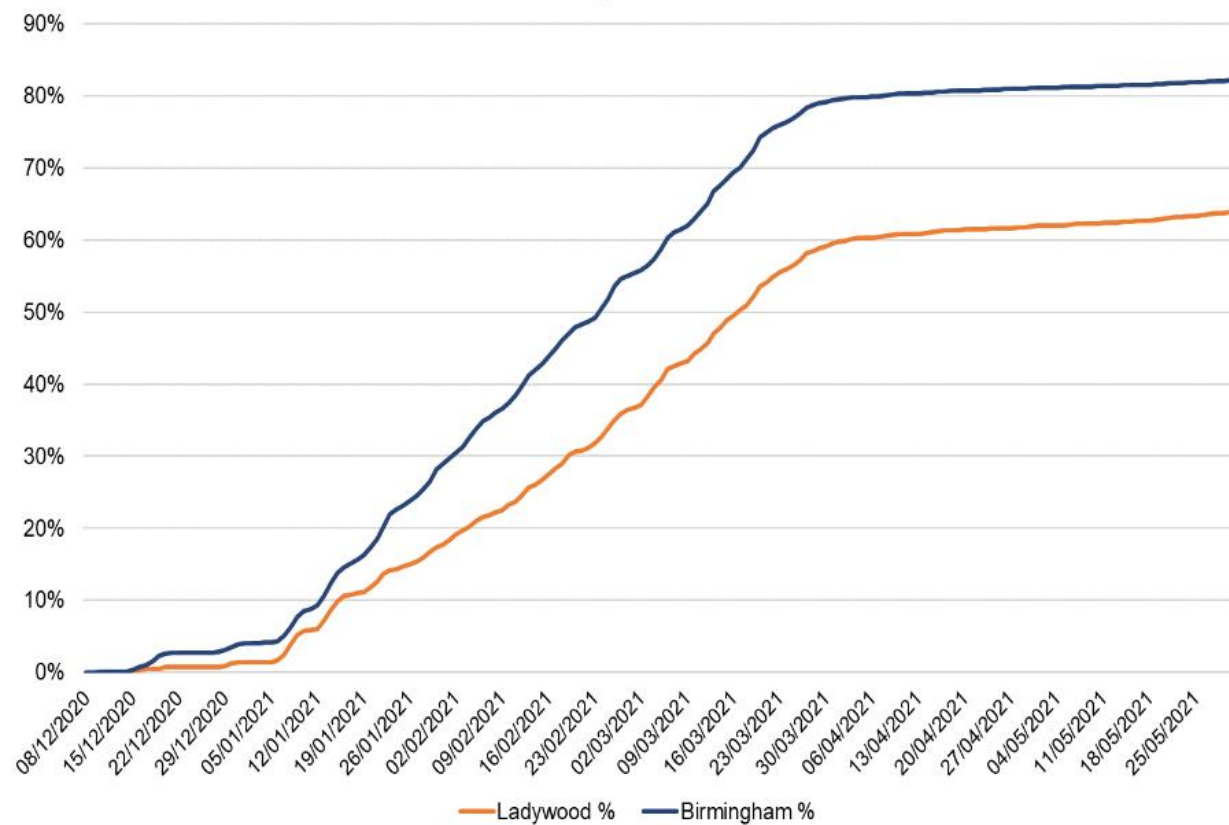


Covid Vaccination % 1st Dose Uptake by Constituency in Age 50+ Population

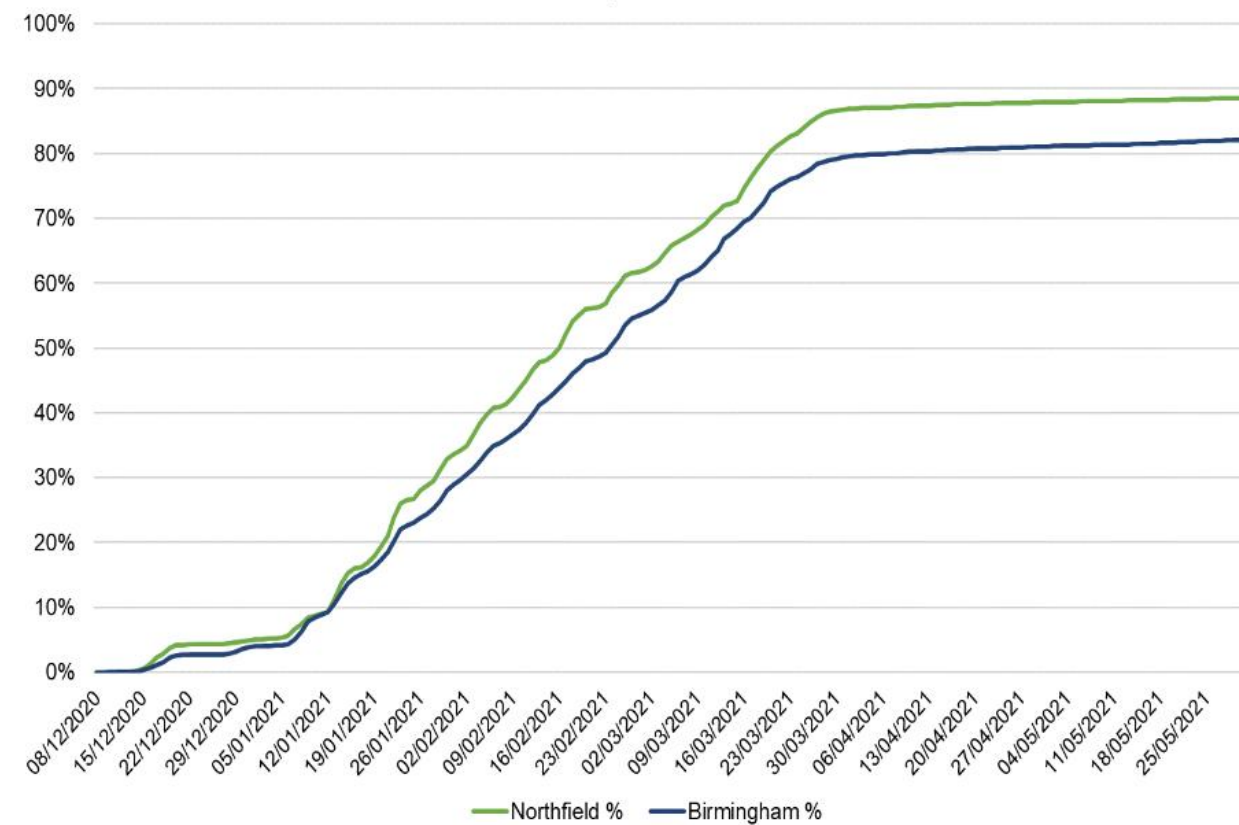


# Uptake Progress by Constituency

Covid Vaccination % 1st Dose Uptake by Constituency in Age 50+ Population

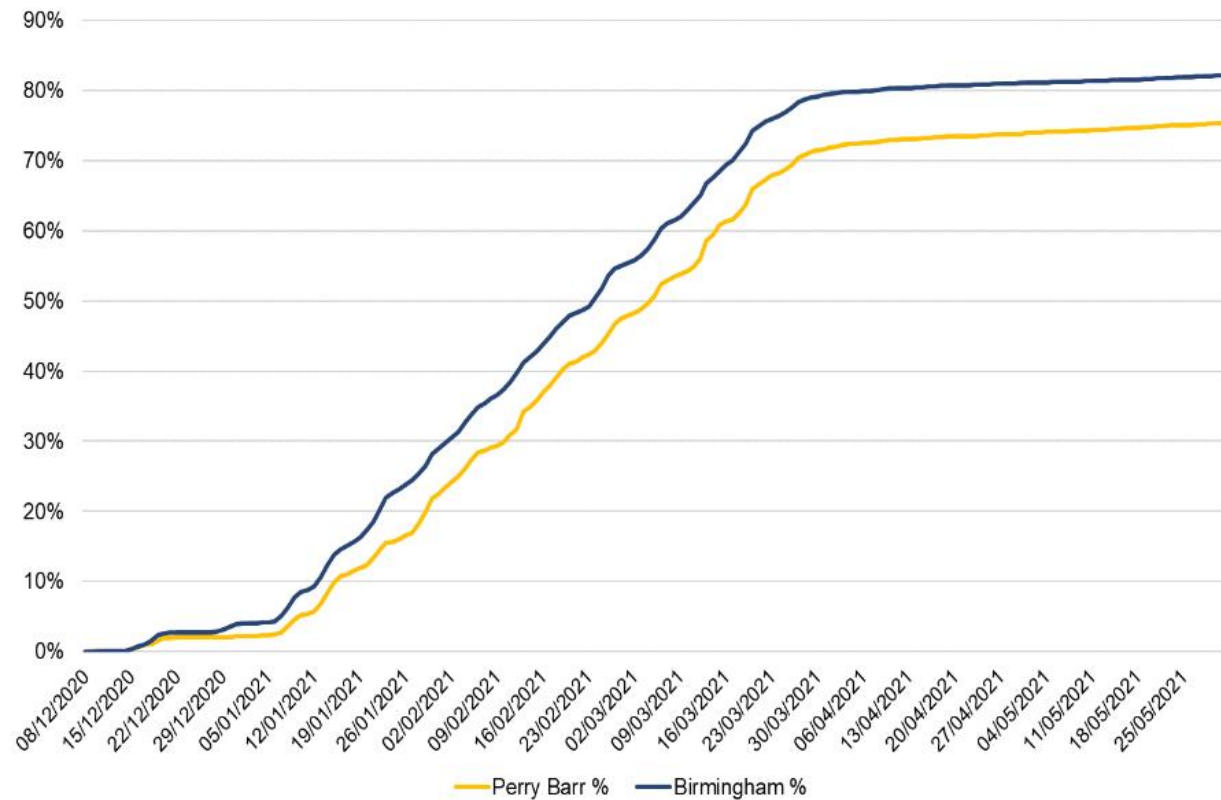


Covid Vaccination % 1st Dose Uptake by Constituency in Age 50+ Population

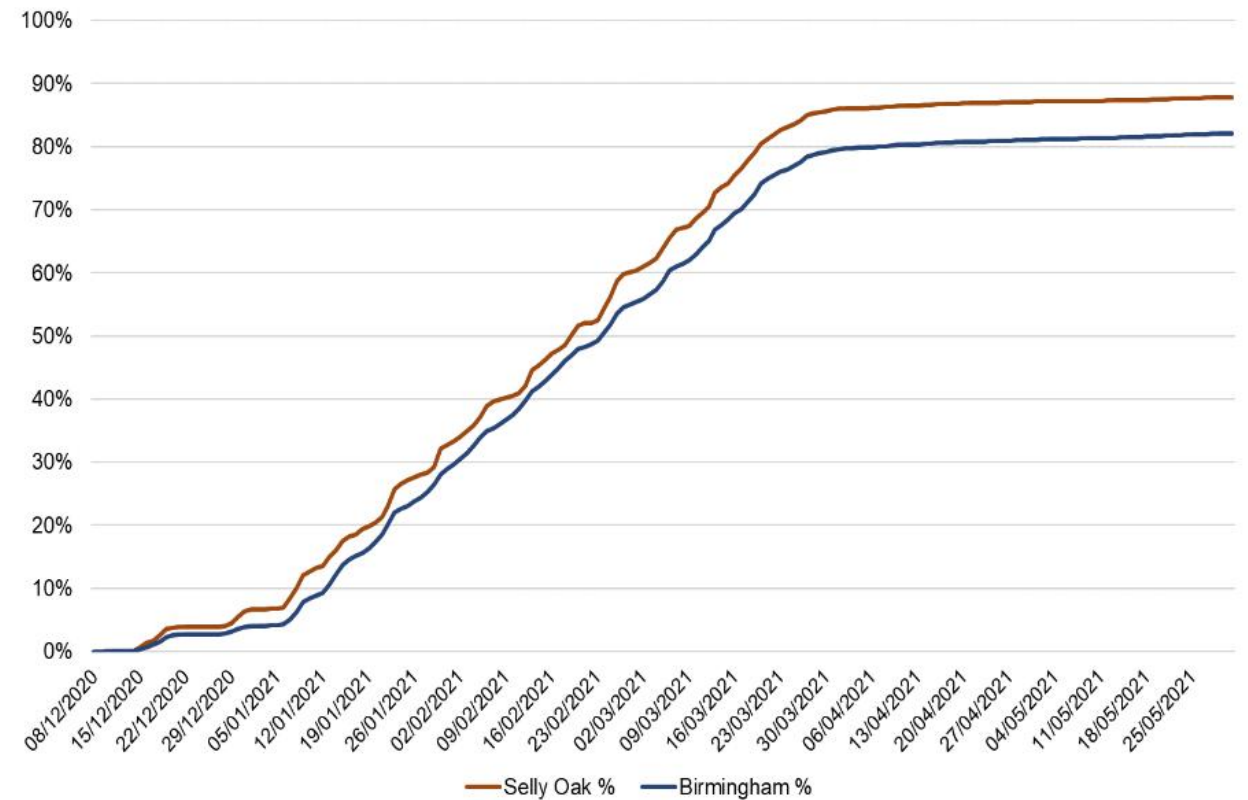


# Uptake Progress by Constituency

Covid Vaccination % 1st Dose Uptake by Constituency in Age 50+ Population

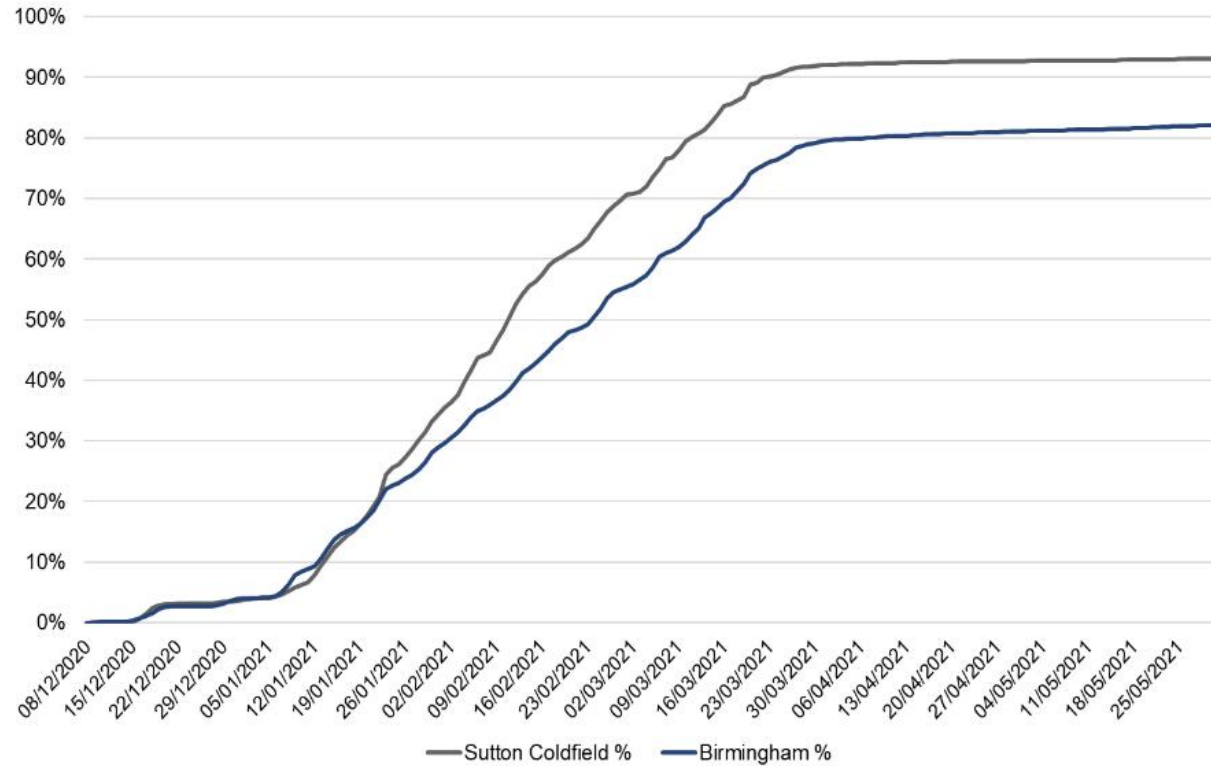


Covid Vaccination % 1st Dose Uptake by Constituency in Age 50+ Population

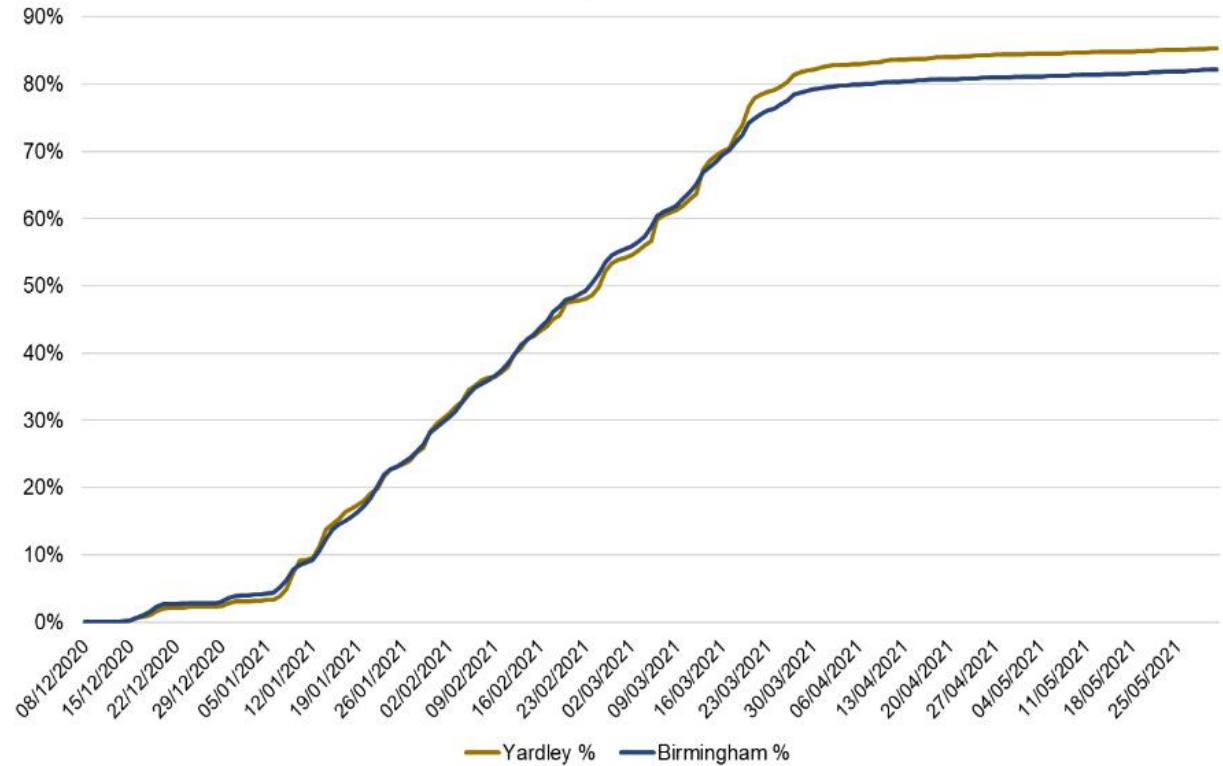


# Uptake Progress by Constituency

Covid Vaccination % 1st Dose Uptake by Constituency in Age 50+ Population



Covid Vaccination % 1st Dose Uptake by Constituency in Age 50+ Population



## Demographics of uptake: Deprivation (extract 01/06/2021)

Uptake of vaccine by deprivation shows lower uptake in more deprived communities than in more affluent communities.

This data is for Birmingham and Solihull CCG and Sandwell and West Birmingham CCG only.

IMD Deprivation Quintile	% uptake of 1st Dose of Covid Vaccination data extracted 01/06										
	Over 80yr olds	75-79yrs	70-74yrs	65-69yrs	60-64yrs	55-59yrs	50-54yrs	CEV	COVID At Risk	Carers - LA	Carers - DWP
Deprived (DQ1)	87.5%	90.0%	88.1%	83.7%	79.6%	74.8%	70.9%	80.5%	69.9%	70.3%	65.8%
Moderately Deprived (DQ2)	93.1%	93.5%	92.3%	89.3%	86.4%	82.8%	79.4%	87.3%	78.8%	79.4%	71.8%
Average (DQ3)	94.9%	95.4%	94.7%	93.0%	90.0%	87.9%	85.0%	90.7%	83.4%	84.7%	76.3%
Moderately Affluent (DQ4)	95.8%	95.7%	95.5%	93.8%	91.6%	89.9%	87.1%	93.4%	87.6%	89.5%	81.7%
Affluent (DQ5)	96.8%	97.2%	96.4%	95.6%	94.2%	92.6%	91.0%	96.2%	91.2%	92.0%	84.1%

## Demographics of uptake: Gender (extract 01/06/2021)

Uptake of vaccine is similar in both genders.

This data is for Birmingham and Solihull CCG and Sandwell and West Birmingham CCG only.

Gender	% uptake of 1st Dose of Covid Vaccination data extracted 01/06										
	Over 80yr olds	75-79yrs	70-74yrs	65-69yrs	60-64yrs	55-59yrs	50-54yrs	CEV	COVID At Risk	Carers - LA	Carers - DWP
Female	92.2%	93.4%	92.0%	89.2%	86.6%	83.7%	81.1%	83.0%	76.2%	76.3%	69.1%
Male	91.6%	93.0%	91.6%	87.6%	83.3%	78.8%	74.0%	85.4%	74.8%	76.3%	66.6%

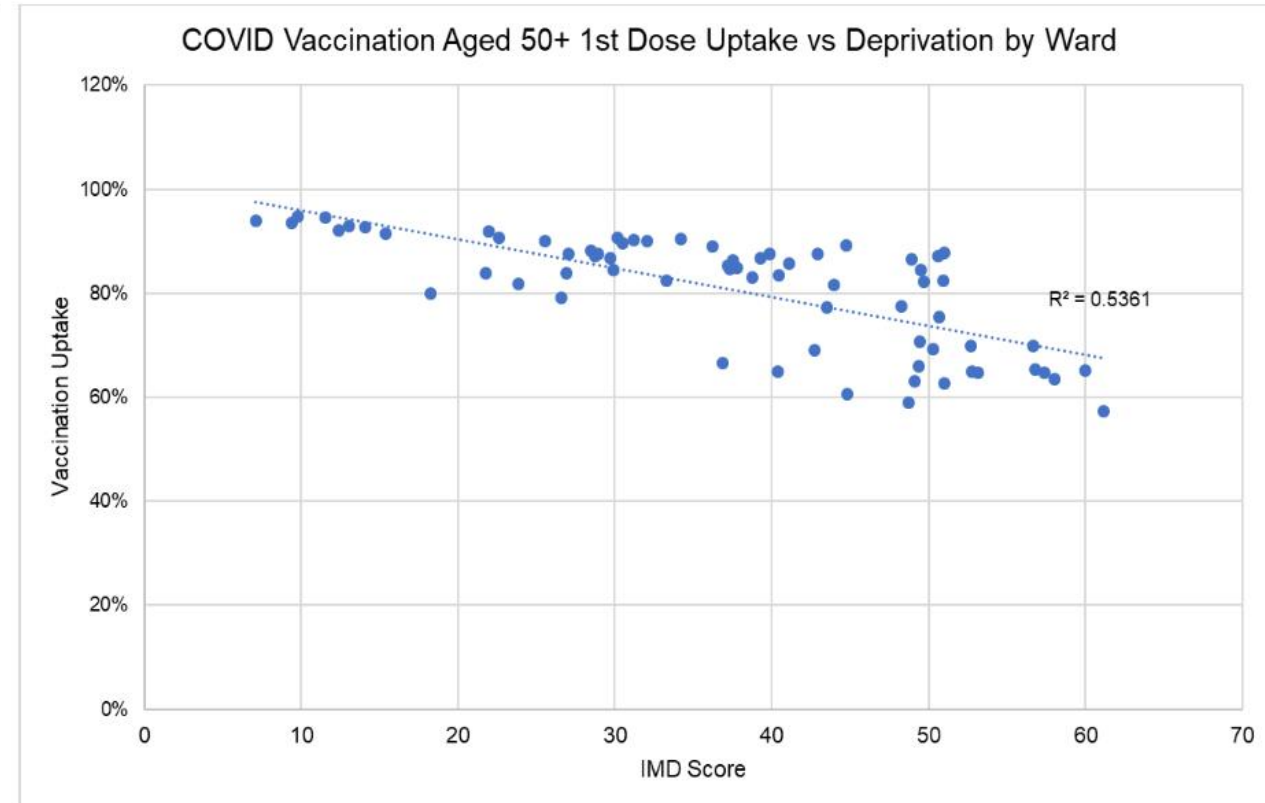
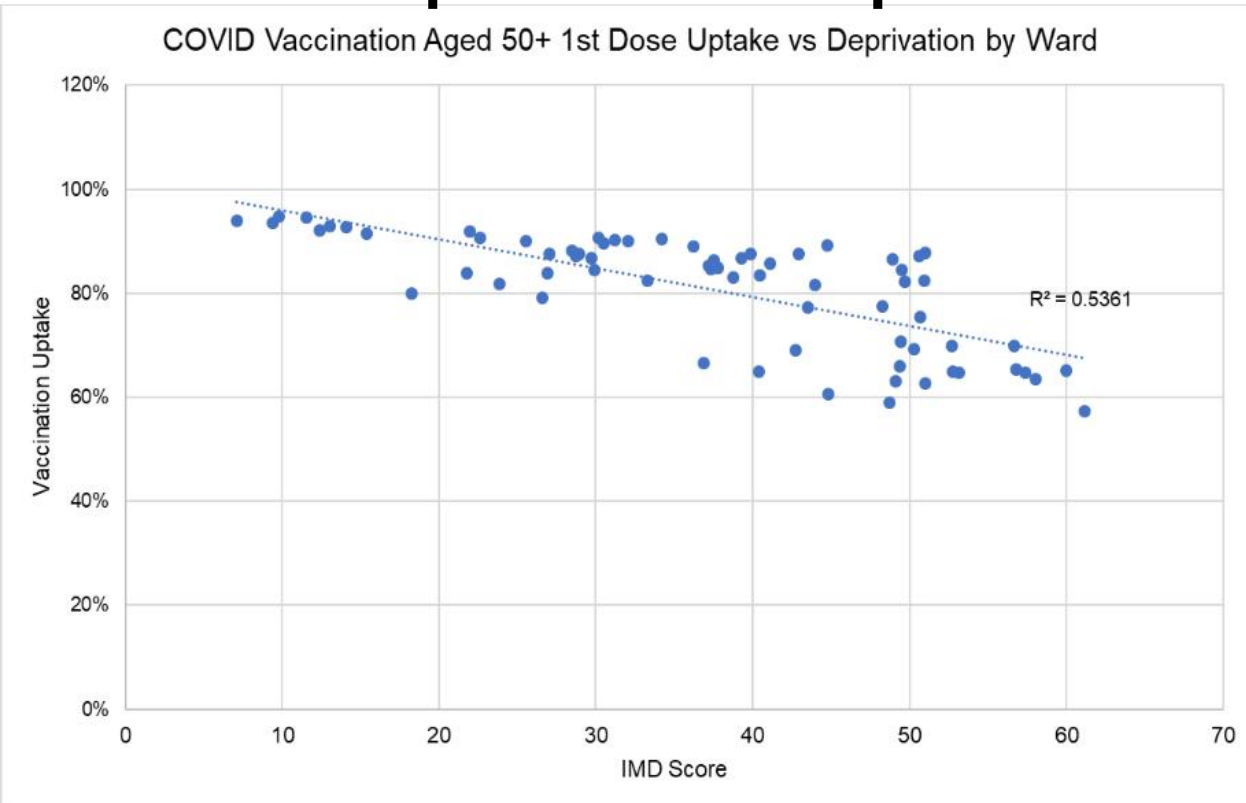


# Demographics of uptake: Ethnicity (extract 01/06)

Across the priority groups uptake of vaccine is lower in African, Caribbean and Black communities and then Pakistani and Bangladeshi communities, but there is a significant difference in the size of different ethnic groups in different priority groups e.g. the total eligible population of >80yrs from a Pakistani ethnic group is 3,526 compared to 396 from African ethnic groups. This data is just for Birmingham & Solihull and Sandwell & West Birmingham CCGs.

Ethnic Group	% uptake of 1st Dose of Covid Vaccination data extracted 01/06										
	Over 80yr olds	75-79yrs	70-74yrs	65-69yrs	60-64yrs	55-59yrs	50-54yrs	CEV	COVID At Risk	Carers - LA	Carers - DWP
Not recorded	70.1%	78.8%	76.7%	70.5%	63.1%	56.6%	51.8%	79.0%	65.0%	70.6%	57.6%
African	68.0%	66.4%	66.5%	68.3%	68.7%	63.4%	62.4%	67.4%	56.2%	57.3%	53.5%
Any other Asian background	81.2%	85.3%	83.5%	81.9%	79.8%	75.6%	73.3%	77.9%	70.4%	65.4%	63.8%
Any other Black background	73.8%	68.6%	69.2%	64.6%	61.9%	58.7%	55.3%	61.7%	50.3%	56.2%	42.7%
Any other ethnic group	75.9%	78.8%	73.6%	73.8%	70.1%	67.1%	64.7%	69.1%	58.5%	66.3%	57.7%
Any other mixed background	86.3%	88.6%	76.9%	75.7%	74.2%	71.1%	68.2%	73.2%	55.4%	60.5%	46.4%
Any other White background	93.7%	91.9%	88.4%	81.2%	76.0%	73.6%	67.2%	80.3%	66.4%	78.1%	63.2%
Arab	80.0%	59.1%	70.6%	70.2%	65.6%	67.0%	54.7%	54.5%	57.6%	41.2%	56.3%
Bangladeshi or British Bangladeshi	80.8%	82.5%	85.3%	86.5%	85.0%	85.9%	83.5%	84.6%	74.6%	74.7%	76.4%
British, Mixed British	96.7%	97.0%	96.3%	94.9%	93.3%	91.5%	89.4%	93.4%	85.2%	85.2%	76.0%
Caribbean	75.7%	76.0%	71.0%	65.7%	60.8%	55.8%	51.7%	65.7%	49.7%	48.6%	35.6%
Chinese	83.0%	70.2%	69.5%	71.3%	70.5%	73.6%	73.1%	83.8%	72.9%	84.8%	89.1%
Indian or British Indian	90.6%	90.2%	90.1%	90.1%	89.3%	86.6%	84.0%	90.1%	83.5%	83.6%	80.6%
Irish	94.7%	95.5%	92.2%	91.9%	89.0%	85.3%	82.9%	93.3%	80.3%	86.1%	70.5%
Pakistani or British Pakistani	79.7%	81.5%	80.2%	78.8%	77.7%	73.6%	70.5%	73.8%	62.4%	63.4%	61.9%
Traveller	0.0%	0.0%	0.0%	0.0%	7.1%	23.1%	26.9%	7.7%	15.2%	0.0%	0.0%
White and Asian	82.9%	81.6%	81.7%	80.0%	83.7%	82.7%	76.6%	74.4%	69.3%	63.3%	62.7%
White and Black African	73.2%	73.9%	56.6%	60.5%	73.0%	61.8%	64.4%	70.3%	58.2%	61.5%	40.4%
White and Black Caribbean	75.0%	73.9%	73.1%	72.4%	67.9%	64.1%	61.2%	65.4%	49.7%	41.4%	34.5%

# Demographics of uptake: Relationship between Deprivation, BME Population & Uptake



A strong relationship between % BME population vs 1<sup>st</sup> dose uptake and a moderate relationship between deprivation vs 1<sup>st</sup> dose uptake are observed.

**[birmingham.gov.uk/futurecouncil](https://www.birmingham.gov.uk/futurecouncil)**



**@BhamCityCouncil**



**@birminghamcitycouncil**



**@birminghamcitycouncil**



**Making a positive difference** every day to people's lives

