

Report of:	Cllr Hamilton, Cabinet Member Health and Social Care
To:	Housing and Homes Overview and Scrutiny Committee
Date:	6 September 2016

Progress Report on Implementation: Working with Communities to Prevent Relationship Violence

Review Information

Date approved at City Council:	14 April 2015
Member who led the original review:	Councillor Mariam Khan
Lead Officer for the review:	Mashuq Ally
Date progress last tracked:	19 November 2015

1. In approving this Review the City Council asked me, as the appropriate Cabinet Member, to report on progress towards these recommendations to this Overview and Scrutiny Committee.
2. Details of progress with the remaining recommendations are shown in Appendix 2.
3. Members are therefore asked to consider progress against the recommendations and give their view as to how progress is categorized for each.

Appendices

1	Scrutiny Office guidance on the tracking process
2	Recommendations you are tracking today
3	Recommendations tracked previously and concluded

For more information about this report, please contact

Contact Officer:	Paula Harding
Title:	Senior Service Manager-Safety Partnership-Violence Against Women
Telephone:	0121 464 8696
E-Mail:	paula.harding@birmingham.gov.uk

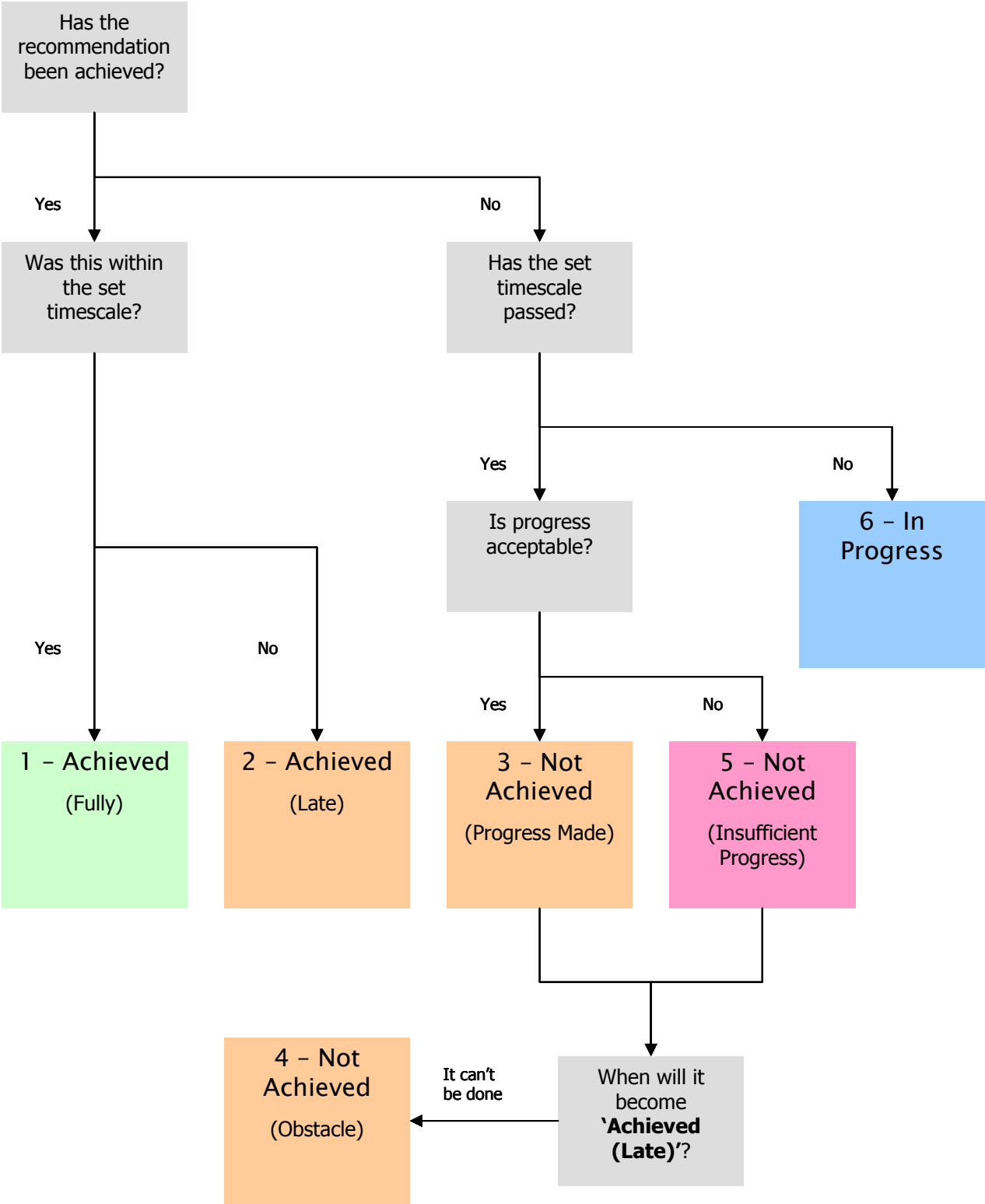
Appendix 1: The Tracking Process

In making its assessment, the Committee may wish to consider:

- What progress/ key actions have been made against each recommendation?
- Are these actions pertinent to the measures required in the recommendation?
- Have the actions been undertaken within the time scale allocated?
- Are there any matters in the recommendation where progress is outstanding?
- Is the Committee satisfied that sufficient progress has been made and that the recommendation has been achieved?

Category	Criteria
1: Achieved (Fully)	The evidence provided shows that the recommendation has been fully implemented within the timescale specified.
2: Achieved (Late)	The evidence provided shows that the recommendation has been fully implemented but not within the timescale specified.
3: Not Achieved (Progress Made)	The evidence provided shows that the recommendation has not been fully achieved, but there has been significant progress made towards full achievement. An anticipated date by which the recommendation is expected to become achieved must be advised.
4: Not Achieved (Obstacle)	The evidence provided shows that the recommendation has not been fully achieved, but all possible action has been taken. Outstanding actions are prevented by obstacles beyond the control of the Council (such as passage of enabling legislation).
5: Not Achieved (Insufficient Progress)	The evidence provided shows that the recommendation has not been fully achieved and there has been insufficient progress made towards full achievement. An anticipated date by which the recommendation is expected to become achieved must be advised.
6: In Progress	It is not appropriate to monitor achievement of the recommendation at this time because the timescale specified has not yet expired.

The Tracking Process



Appendix 2: Progress with Recommendations

No.	Recommendation	Responsibility	Original Date For Completion	Cabinet Member's Assessment
R01	<p>That the City Council encourages community led preventative approaches within its own services and amongst its partner organisations:</p> <ul style="list-style-type: none"> a) Involving working closely with community and voluntary organisations and faith groups; b) Utilising and updating the most recent contact information about community champions and community leaders; c) Mobilising communities and encouraging them to tackle attitudes to relationship violence with a view to preventing relationship violence and bringing about cultural change in the longer term. 	<p>Cabinet Member for Inclusion and Community Safety</p> <p>Cabinet Member for Health & Social Care</p>	November 2015	3

Evidence of Progress

Following this scrutiny recommendation, the Community Safety Partnership and the Esme Fairburn Charitable Foundation have jointly supported the development of Birmingham & Solihull Women's Aid's community engagement initiative on preventing domestic abuse in Black and minority ethnic communities and engaging with communities specifically in forced marriage, honour based violence and female genital mutilation (FGM). This project builds on and extends Women's Aid's successful model of community engagement in FGM which

- developed peer research which provided a rich narrative about affected communities attitudes to violence against women and what could be done to prevent it
- recruited and supported community champions (women, men and young people) fostering trust and collaboration with local communities
- worked with schools and colleges, delivering workshops and providing support to young people affected
- trained local professionals from a range of disciplines in effective responses.

Many other agencies have been actively working across the city to engage local communities including:

- Amirah Foundation *SayNo Project* was funded by the Community Safety Partnership to encourage more young people to talk about, discuss and get involved in a social media campaign outlawing violence against Women and Girls. The Amirah Foundation has been running a social media campaign and going into schools to talk to young people about attitudes and social pressures
- Amirah Foundation's *Fighting Back Campaign* involving a series of oral histories exploring changing attitudes and responses to domestic abuse over the last 50 years
- Amirah Foundation's Brothers Against Violence Campaign shortly to launch to involve men in the campaign to stop violence against women.
- Ashramoseley Housing Association's campaign around forced marriage including showings of their film *Land Gold Women* and launch of an interactive board game to raise awareness of domestic abuse
- Muslim Women's Network forced marriage and FGM campaigns working with faith leaders, the Al Quba Trust and St Alban's Academy and developing awareness raising videos on FGM
- Birmingham LGBT's campaign to raise awareness of domestic abuse in LGB and T relationships which will feature in Birmingham again in the Autumn
- The Community Safety Partnership's *This is Abuse Campaign*, supported by local multi-agency domestic abuse forums. The campaign used a variety of media to raise awareness of the new law on coercive control including advertising on all pharmacy bags across the city, inside buses and trains and promoted through social media and in diverse news outlets.
- For the Commemoration Day of Memory for Victims of Forced Marriage on 14th July, Ashram Moseley, Birmingham and Solihull Women's Aid and Karma Nirvana each held events with local communities
- For the national day for the Elimination of Violence Against Women on 25th November, many agencies held

local events and the Muslim Women's Network commenced a campaign highlighting the deaths of women through domestic abuse.

- West Midlands Police *Salon Saviours* campaign to train beauticians, hairdressers and nail technicians in the signs of abuse and the support networks available.

This is not an exhaustive list and many more organisations not listed here are actively working across the city to engage local communities, demonstrating how community engagement can be successful by fostering a spirit of trust and collaboration.

However, much more needs to be done to match the spirit of this recommendation. The ambitions of the new (currently draft) domestic abuse prevention strategy are for a city where everyone lives free from domestic abuse and expects equality and respect in their relationships. Success on this scale depends upon achieving attitudinal and behavioural change across individuals, across ages and across cultures and will depend on all communities taking a lead on prevention, widening public awareness and challenging abuse where it happens. Whilst our specialist services have shown resourcefulness in securing charitable funding to support their work, change on the scale that is needed will not happen without sustainable resource and this will be the challenge of the new strategy to harness resources to support sustainable change.

No.	Recommendation	Responsibility	Original Date For Completion	Cabinet Member's Assessment
R02	That the City Council strengthens its leadership role for the city by reviewing the domestic violence strategy and enabling: <ul style="list-style-type: none"> a) coherent pathways for victims and children, across sectors, to access the support and protection they need; b) strengthening the engagement of schools and other educational establishments, including academies, committing to participating; c) integrated working between Birmingham Youth Services and Think Family Team and Children's Services and homelessness; d) youth service providers from both statutory and third sector involvement in the delivery of informal education programmes with young people. 	Cabinet Member for Inclusion and Community Safety Cabinet Member for Children's Services Cabinet Member for Health & Social Care	November 2015	3

Evidence of Progress

The domestic abuse prevention strategy is being prepared for consultation. A pre-consultation draft is included as a separate report to this Committee.

No.	Recommendation	Responsibility	Original Date For Completion	Cabinet Member's Assessment
R03	That the City Council and its partners encourage schools and educational establishments to take a 'whole school approach' to children and young people developing positive relationships and provide guidance on: <ul style="list-style-type: none"> a) the delivery of school based educational programmes and awareness campaigns aimed at educating young people about healthy relationships in both 	Cabinet Member for Inclusion and Community Safety Cabinet Member for Children's Services	November 2015	3

	primary and secondary settings drawing on the expertise of the specialist domestic violence sector; b) working in partnership with youth service providers and in facilitating informal education delivery that promotes healthy relationships and brings about a change in attitudes to relationship violence; and c) working with parents to educate parents about attitudes to relationship violence.			
--	--	--	--	--

Evidence of Progress

This recommendation features significantly in the draft Domestic Abuse Prevention Strategy to be consulted upon between September and November 2016.

In the preparation of the draft strategy, engagement was held with 450 heads or designated safeguarding leads through three safeguarding conferences during June. The conferences revealed that a number of schools are already involved in the delivery of programmes to promote healthy relationships such as:

- Mentors in Violence Prevention (MVP) Programme is being piloted in 6 Birmingham schools: a programme to help tackle rape, dating and domestic violence, sexual harassment, bullying and other forms of violent and abusive behaviour. MVP aims to empower young people to take an active role in promoting a positive school climate and develop bystander skills to safely intervene and prevent violence. The programme is currently being rolled out across Scotland with the support of the Scottish Executive.
- Birmingham and Solihull Women's Aid Positive Relationships Programme Women's Aid which last year delivered a 6 week preventative programme to over 1800 students across primary, secondary, pupil referral units and youth groups. Briefings have reached 380 teachers and provided 23 sessions for parents. This level of delivery was supported by funding from the Community Safety Partnership which ceased in March 2016, pending a new commissioning framework for the partnership.
- Miss Dorothy programme which involves learning about personal behaviour and safety for seven to eleven-year-olds. It is designed to tackle issues including bullying, crime, social inclusion and good citizenship, indirectly addressing domestic violence (primary)
- UNICEF Rights Respecting Schools award (primary)

Clearly schools are being called upon to engage in a wide range of initiatives to tackle a wide range of social ills. Rather than promote any individual programme above others, the new strategy will seek to develop curriculum materials, engage schools in reviewing the value of individual programmes and continue to promote a whole school ethos to positive relationships. Through the conferences, a number of school leads and school advisors have volunteered to help develop curriculum materials and to support the adoption of whole school approaches in this area.

In addition, addressing domestic abuse has been identified as a significant issue for the Social Emotional Mental Health (SEMH) Pathfinder. The Pathfinder is developing a unique model of integrated provision across education, children's services and health to more effectively meet the exceptional complex needs of young people and families from disadvantaged socio-economic backgrounds, with multiple social problems. As domestic abuse is a common feature within the cohort of children attending the five special schools involved in the Pathfinder, a partnership with domestic abuse specialist services is being developed as part of the approach.

No.	Recommendation	Responsibility	Original Date For Completion	Cabinet Member's Assessment
R04	That an assessment of progress against the recommendations made in this report be presented to the relevant O&S Committee.	Cabinet Member for Inclusion and Community Safety	November 2015	1

Evidence of Progress

Appendix ③: Concluded Recommendations

These recommendations have been tracked previously and concluded.

They are presented here for information only.

concluded

No.	Recommendation	Responsibility	Date Concluded by Overview and Scrutiny Committee	Tracking Assessment