

Birmingham Local Outbreak Engagement Board Covid-19 Overview

Birmingham Public
Health Division
14/12/2021



Overview



Vaccine Roll Out

The Council continues to support the NHS in delivering the large-scale vaccination programme which to date, has been very successful. **The list of eligible people can be found here:** <https://www.nhs.uk/conditions/coronavirus-covid-19/coronavirus-vaccination/who-can-get-the-vaccine/>

Covid-19 vaccine booster will be offered to all adults (aged 18+) by the end of 2021 to tackle the growing wave of Omicron cases

The 16-17 years old can also receive their vaccines through Walk-in sites which are available at locations across Birmingham.

All children aged 12-15 years old are being offered their vaccine either at school or out of school through the national booking service (online booking or via 119).

Figures from the [GOV.UK](https://www.gov.uk) website indicate that 89.0% of England people aged 12 years and over have had their 1st vaccine dose, 81.1% their 2nd dose, and 40.8% their booster dose. This compares to 66.1%, 58.5% and 24.9%* in Birmingham. The vaccination roll-out in the 12-15 age group will impact the overall uptake figures, compared to uptake at age 16+.

* The booster figures reported are significantly different from previous reports because of the change in the eligible population used as the denominator population. The eligible population used for booster uptake is the eligible population used for dose 1 and dose 2 uptake (as reported in the Gov.UK website) Previous reports were based on the population who had been fully vaccinated.

Covid-19 in Birmingham: Current situation and 60-day trend

Coronavirus in Birmingham

Total deaths

(Data up to 13 Dec)

3,089

Latest daily figure

2

new deaths

60-day trend

(based on seven-day averages).



Source: coronavirus.data.gov.uk

Total cases

(Data up to 13 Dec)

194,576

Latest daily figure

344

new cases

60-day trend

(based on seven-day averages).



Source: coronavirus.data.gov.uk

Hospital admissions

(Data up to 13 Dec)

24,635

Latest daily figure

22

new admissions

60-day trend

(based on seven-day averages).



Source: NHS COVID-19 Situation
Operational Dashboard

Over 60's cases

(Data up to 12 Dec)

22,791

Latest daily figure

15

60+ new cases

60-day trend

(based on seven-day averages).



Source: PHE



**A BOLDER
HEALTHIER
BIRMINGHAM**



7 Day Cases, Testing & Vaccination Summary

7 Day Rolling Case Rate at 10th December

(Pillar 1 & 2): **370.6/100k**



- Rate on 3rd December: 317.3/100k.
- Ranked 14th (of 14 LAs), with Telford & Wrekin ranked 1st (503.0/100k)

Vaccination aged 16+ (as at 14th December)

- 1st Dose: 68.1%
- 2nd Dose 62.8%
- Booster Dose*: 27.0%

7 Day Pillar 2 PCR testing rate at 10th December: 2,792/100k

- Rate of testing on 3rd December: 2,327/100k
- Ranked 13th in the region



7 Day LFD testing rate at 10th December: 5,115/100k

- Rate of testing on 3rd December: 4,616/100k
- Ranked 13th in the region



% of Pillar 2 positive PCR tests at 10th December: 14.1%

- Rate on 3rd December: 12.4%



% of positive LFD tests at 10th December: 1.6%

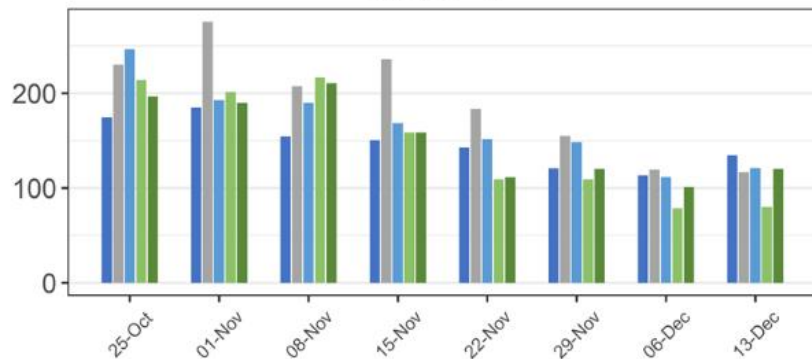
- Rate on 3rd December: 1.5%



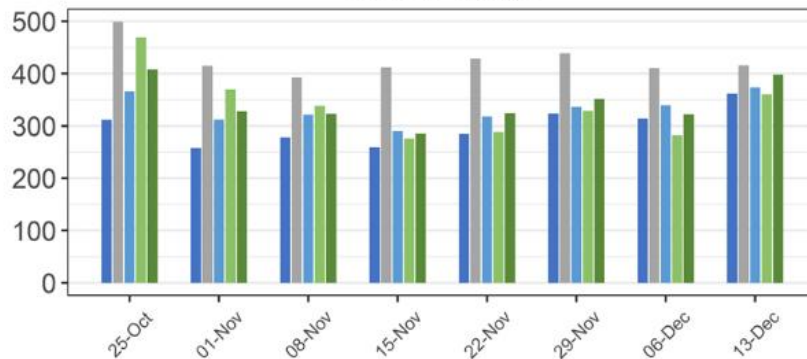
* The booster figures reported are significantly different from previous reports because of the change in the eligible population used as the denominator population. The eligible population used for booster uptake is the eligible population used for dose 1 and dose 2 uptake (as reported in the Gov.UK website) Previous reports were based on the population who had been fully vaccinated.

Birmingham & the Black Country Direction of Travel

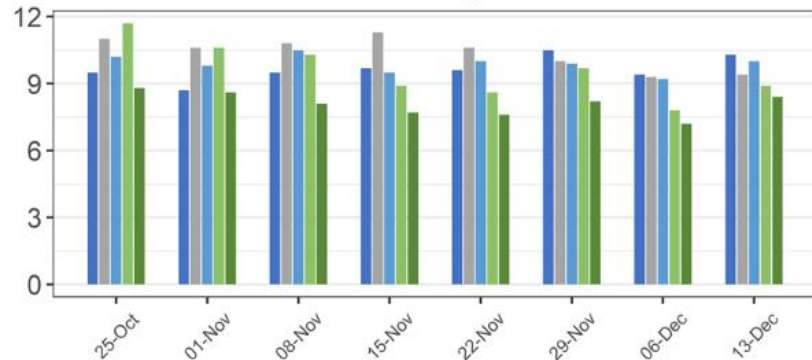
Case rate - 60+



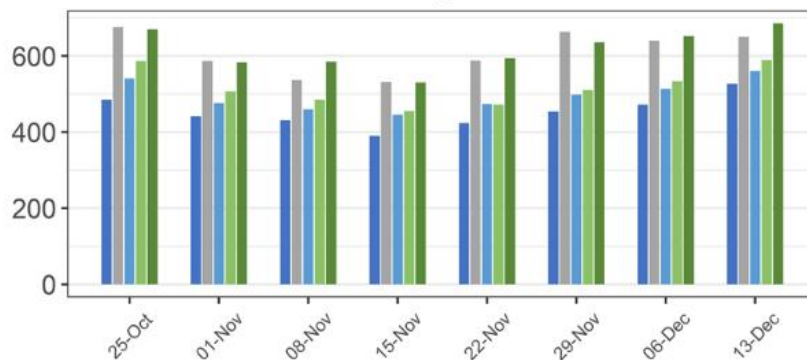
Case rate - all ages



Positivity

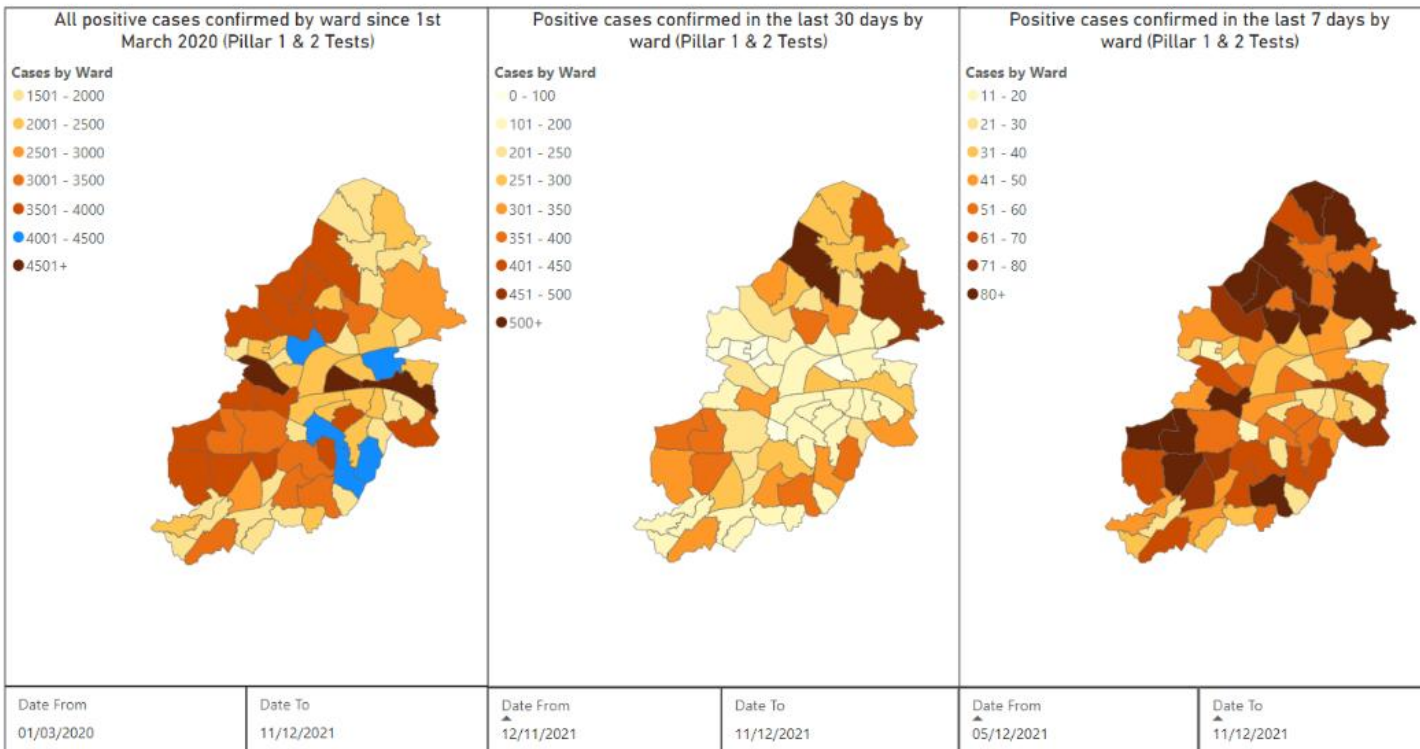


Testing rates



■ Birmingham
■ Dudley
■ Sandwell
■ Walsall
■ Wolverhampton

Confirmed Cases by Ward for Pillar 1 and 2 Tests



Total

Last Month

Last Week

Top Ten Case Rates by Ward

Ward	Prior week (27 th November to 3 rd December 2021)		Most recent week (4 th to 10 th December 2021)		Change between last two weeks		
	Cases	Rate	Cases	Rate	%	Absolute difference	
Sutton Mere Green	90	917.8	115	1,172.75	28%	254.9	↑
Sutton Roughley	87	754.5	124	1,075.36	43%	320.9	↑
Sutton Four Oaks	70	768.3	74	812.21	6%	43.9	↑
Sutton Walmley & Minworth	112	708.7	119	752.97	6%	44.3	↑
Sutton Wylde Green	60	701.6	58	678.20	-3%	-23.4	↓
Sutton Vesey	109	558.6	129	661.10	18%	102.5	↑
Sutton Trinity	79	851.9	61	657.82	-23%	-194.1	↓
Sutton Reddicap	56	565.9	55	555.78	-2%	-10.1	↓
South Yardley	44	417.0	57	540.23	30%	123.2	↑
Highters Heath	38	347.2	57	520.74	50%	173.6	↑

ONS COVID-19 Infection Survey, 25th November to 2nd December 2021

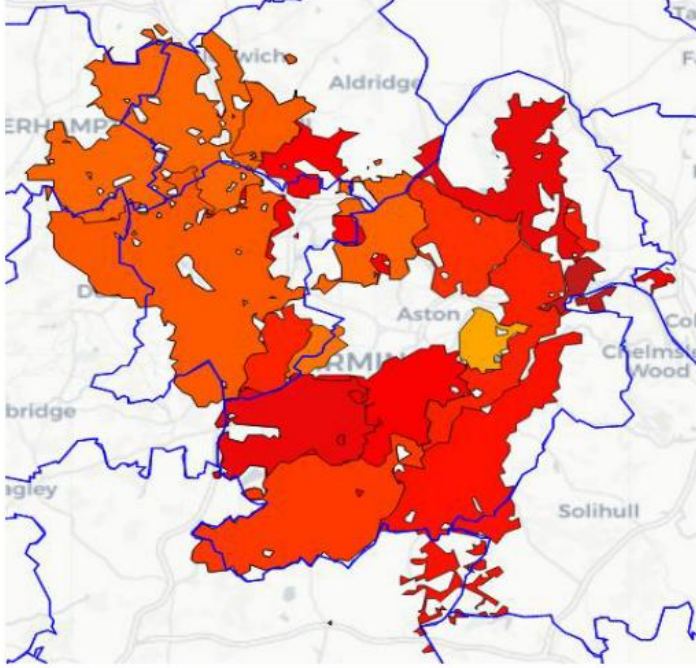
The ONS infection survey estimates the percentage of the Birmingham population who were COVID positive in the 7 days up to 2nd December was **1.88%**, an increase compared to the previous week's estimate of 1.17%.

In the West Midlands, in the 7 days up to 1st December, the estimated percentage testing positive was 1.32%, a decrease compared to the previous week's estimate of 1.45%.

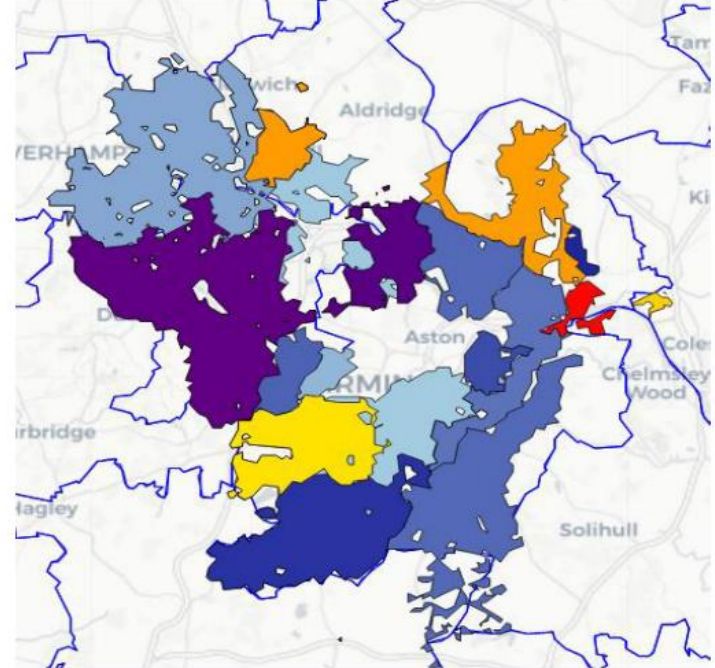
In England, in the 7 days up to 1st December, the estimated percentage of people testing positive increased for those in school Year 7 to school Year 11 (3.87%), and in those aged 25-34 (1.43%) and 35 - 49 years (2.01%). In contrast, the percentage testing positive decreased for those aged 50 years and over.

The percentage testing positive was highest in ages 2 years to school Year 6, and school Years 7 to 11.

NHS WASTEWATER SARS-COV-2 Report 5th December to 14th December 2021



7-day average SARS-CoV-2 RNA concentration (gc/L) in wastewater. Darker shading indicate areas with a higher viral concentration. Higher concentration is associated with increased prevalence



Change in weekly average SARS-CoV-2 RNA concentration in wastewater. Measured as the difference between Log10 values of the weekly averages. Grey shading indicates areas where there was insufficient data to measure change.

Variants of Concern



Variant of Concern or Under Investigation

The Omicron virus (B.1.1.529) is highly transmissible; has been detected in 52 countries and continues to grow rapidly in all regions of England.

Currently, there are 5,346 confirmed cases in the UK, of which 5,006 cases were reported across England. In Birmingham, 10 confirmed cases have been identified (following sequencing).

Reports from the UKHSA confirm that 10 people have been hospitalised with the variant in England - the majority had received two doses of the vaccine. One death has been reported in the UK.

Details of the Omicron (B.1.1.529) variant is still unclear. The full impact of the Omicron variant on its likelihood to cause more severe illness is still being investigated. However, reports from South Africa so far, indicates the reverse but this is still being closely monitored.

UKHSA early analysis suggests cases could be doubling at a rate of 2.5 to 3 days.

Variant of Concern or Under Investigation

The original Delta variant remains dominant in the UK.

In England, there are 61,250 VUI-21OCT-01 out of 1,548,561 Delta cases

There are now 80,960 cases reported in the UK, with the majority, 61,250 (75.7%) of these in England.

In Birmingham, VUI-21OCT-01 now accounts for 690 of the 2919 (23.6%) sequenced Delta cases as of the 1st November 2021.

Testing



**A BOLDER
HEALTHIER
BIRMINGHAM**



Birmingham
City Council

PCR Test Locations

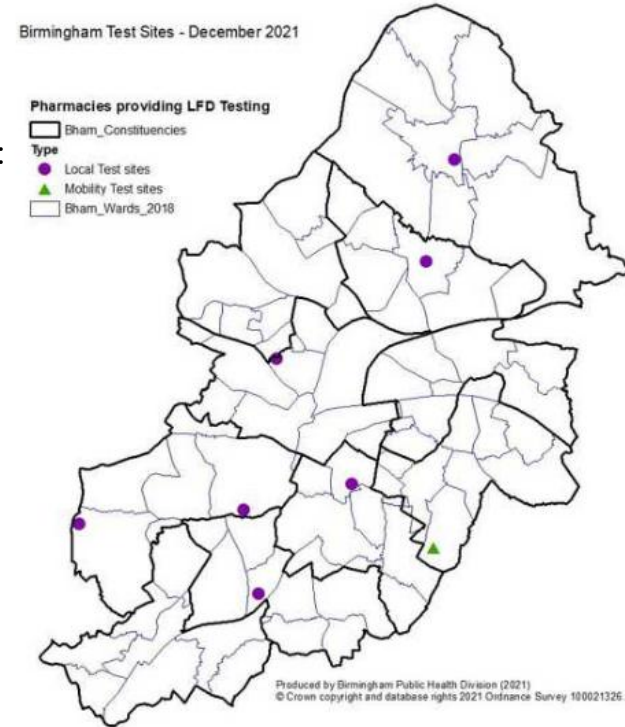
There are currently 2 active drive-in mobile testing unit (MTU) sites:

- Fox Hollies Leisure Centre, B27 7NS
- Reservoir Road, B23 6DJ

There are currently 7 active walk-in local testing sites (LTS):

- Seven Capital, Orphanage Road, B24 9HX (Closes mid-December)
- 60 Villa Street, B19 2XS
- Lifford House Car Park, Stirchley, B30 3BN
- South Parade Car Park, Sutton Coldfield, B72 1ST
- Birmingham University South Gate Car Park, B15 2TU
- Woodgate Valley Park, B32 3QT
- Alfred Road Car Park – B11 4PB

Covid-19 PCR Testing Locations

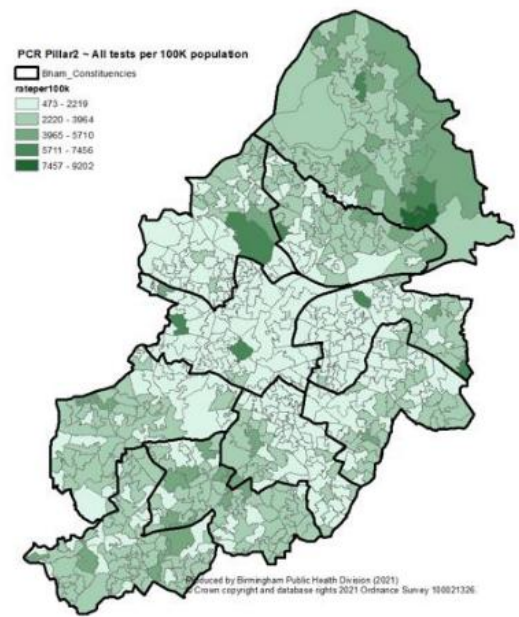


**A BOLDER
HEALTHIER
BIRMINGHAM**

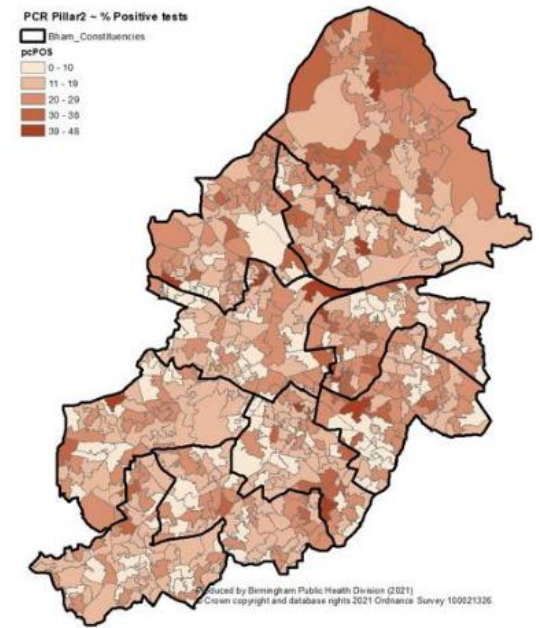


PCR Testing (Pillar 2) by LSOA: 7 days up to 10th December 2021

PCR Tests per 100k (rate)

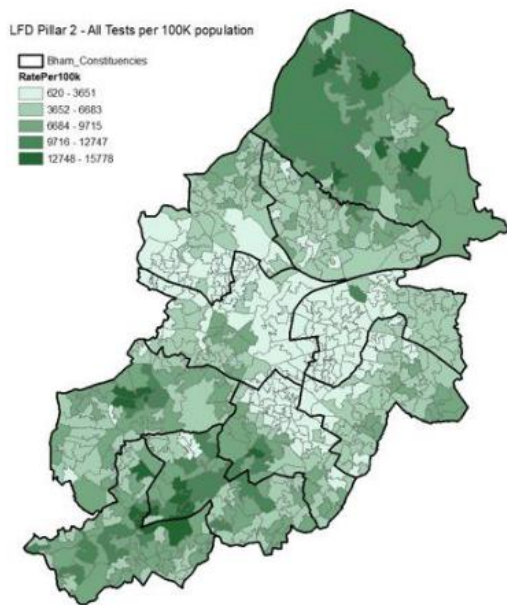


PCR positivity (%)



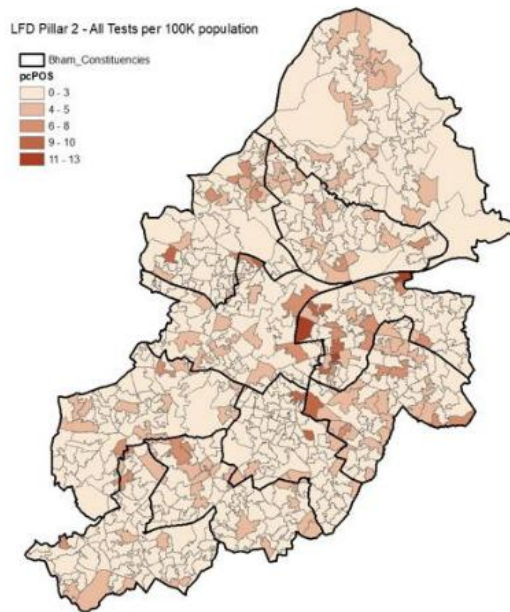
LFD Testing (Pillar 2) by LSOA: 7 days up to 10th December 2021

LFD Tests per 100k (rate)



Produced by Birmingham Public Health Division (2021)
© Crown copyright and database rights 2021 Ordnance Survey 100021326

LFD positivity (%)



Produced by Birmingham Public Health Division (2021)
© Crown copyright and database rights 2021 Ordnance Survey 100021326

Lateral Flow Test Locations

A national initiative to support home testing is in place.

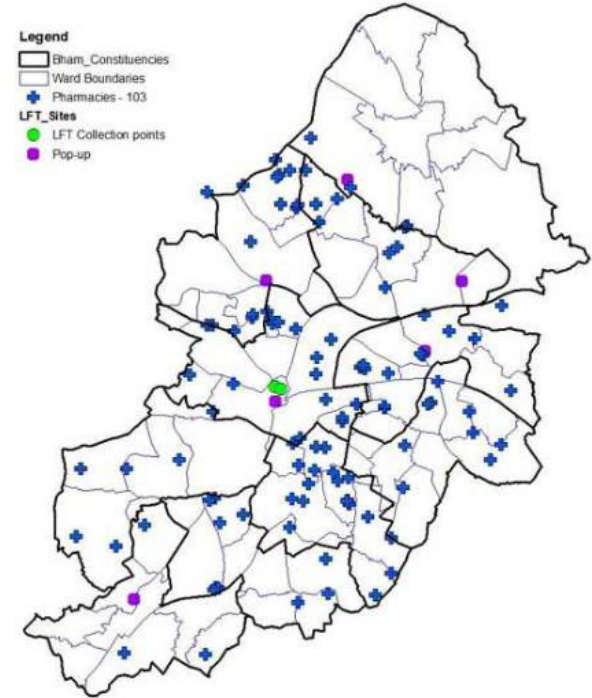
LFD testing and the Community Collect initiative is available throughout a network of community pharmacies in Birmingham.

There are a total of 104 pharmacy community testing sites currently live.

A series of pop-up collection sites are now operating around Birmingham to increase the reach of distribution.

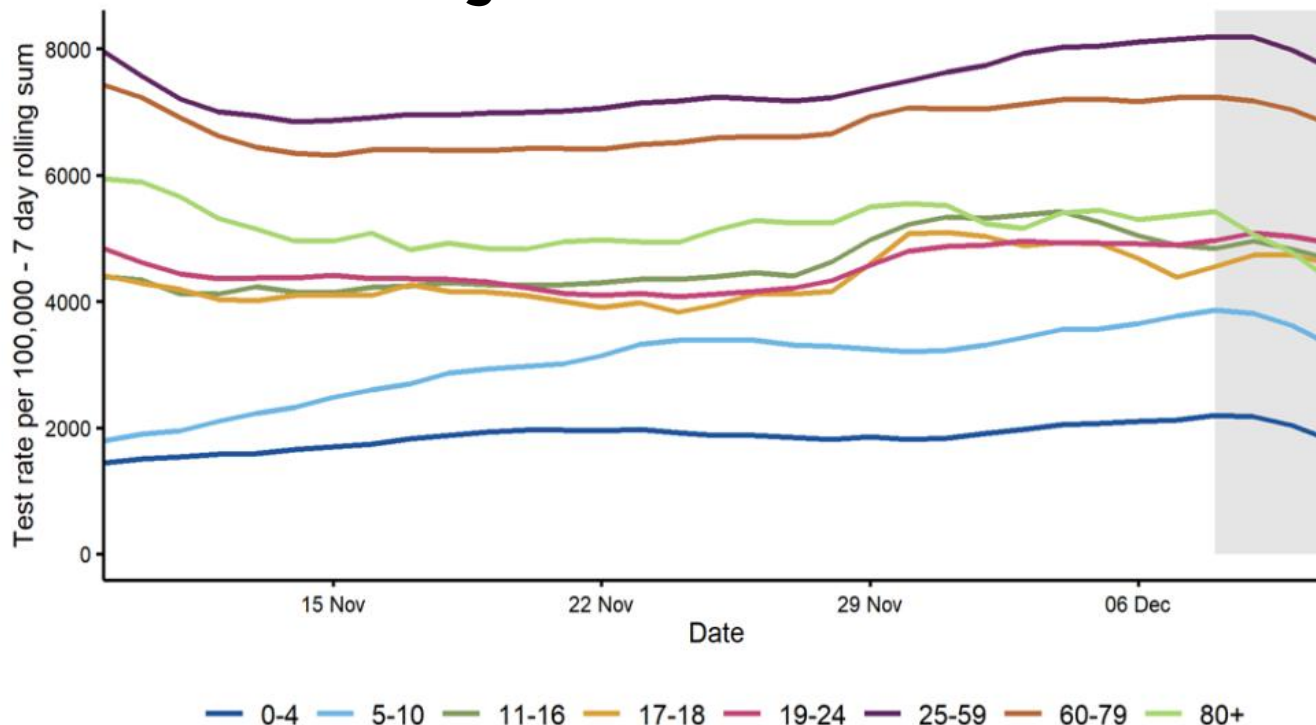
All collection points (pharmacy and BCC run) can be found here - <https://maps.test-and-trace.nhs.uk/>

Birmingham Lateral Flow Device (LFD) Test Locations
December 2021



Produced by Birmingham Public Health Division (2021)
© Crown copyright and database rights 2021 Ordnance Survey 100021326

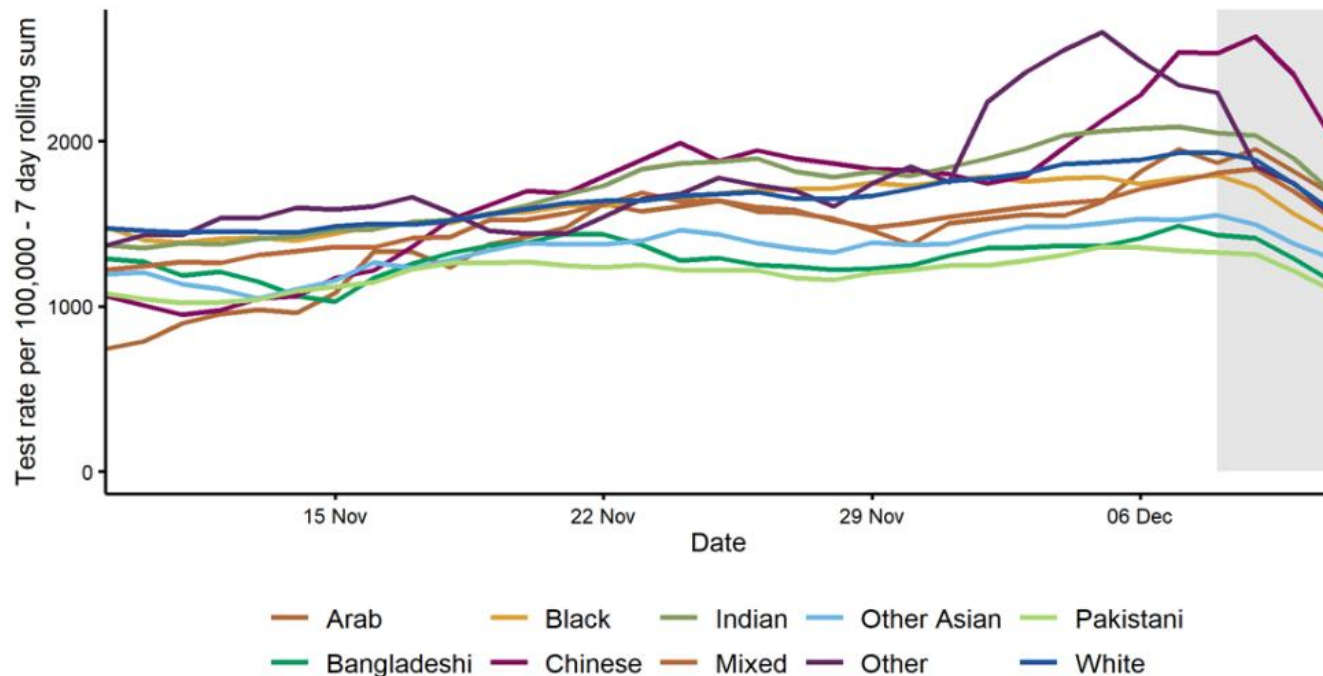
Age-Specific 7-Day Rolling Pillar 1 & 2 Test Rates per 100,000 Population Among Residents of Birmingham: 9th November to 12th December 2021



4 most recent days are provisional - indicated by a grey background

Excluding 775 tests with missing age data.

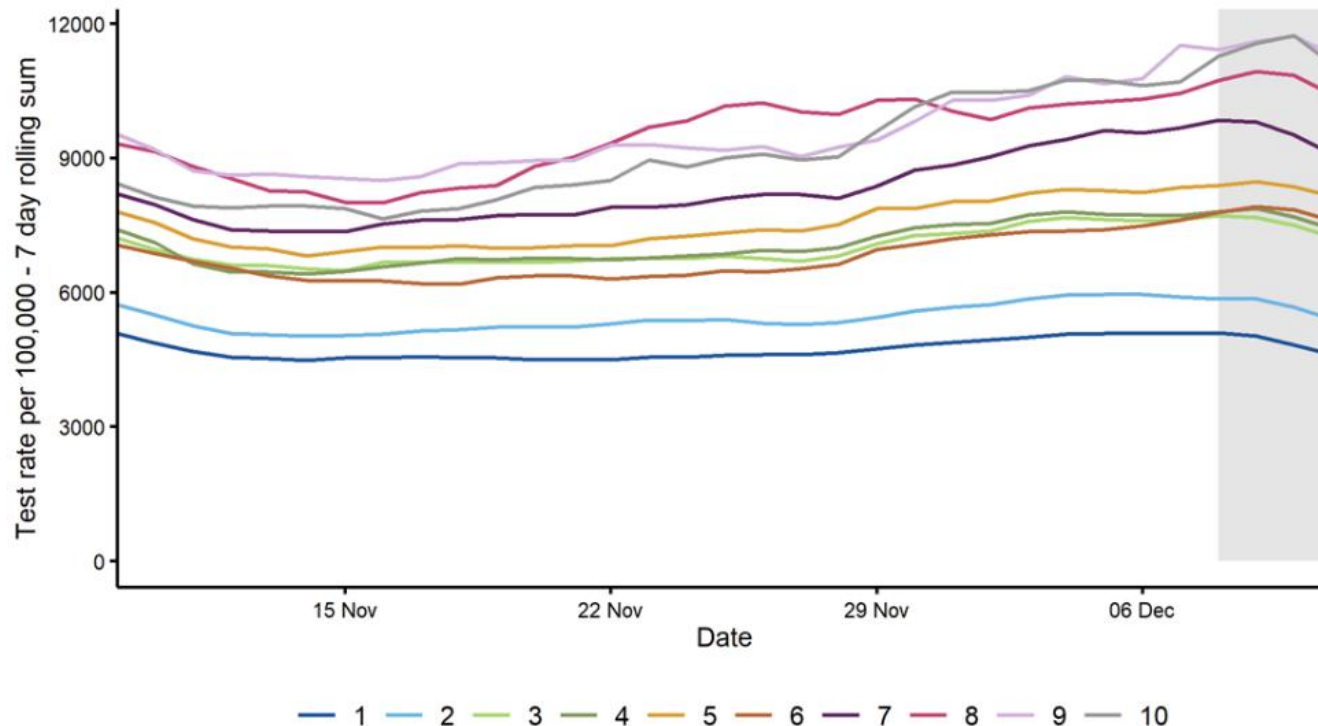
Ethnicity-Specific 7-Day Rolling Pillar 2 Test Rates per 100,000 Population Among Birmingham Residents: 9th November to 12th December 2021



4 most recent days are provisional - indicated by a grey background

Excluding 187657 pillar 2 tests with missing ethnicity data.

Index of Multiple Deprivation-Specific 7-Day Rolling Pillar 1 & 2 Test Rates per 100,000 Population Among Birmingham Residents: 9th Nov to 12th Dec 2021



Using Index of Multiple Deprivation (IMD) of LSOA of usual residence (1 = most deprived; 10 = least deprived). Where an IMD is not present in local denominator data, it is not shown.

The 4 most recent days are provisional - indicated by a grey background

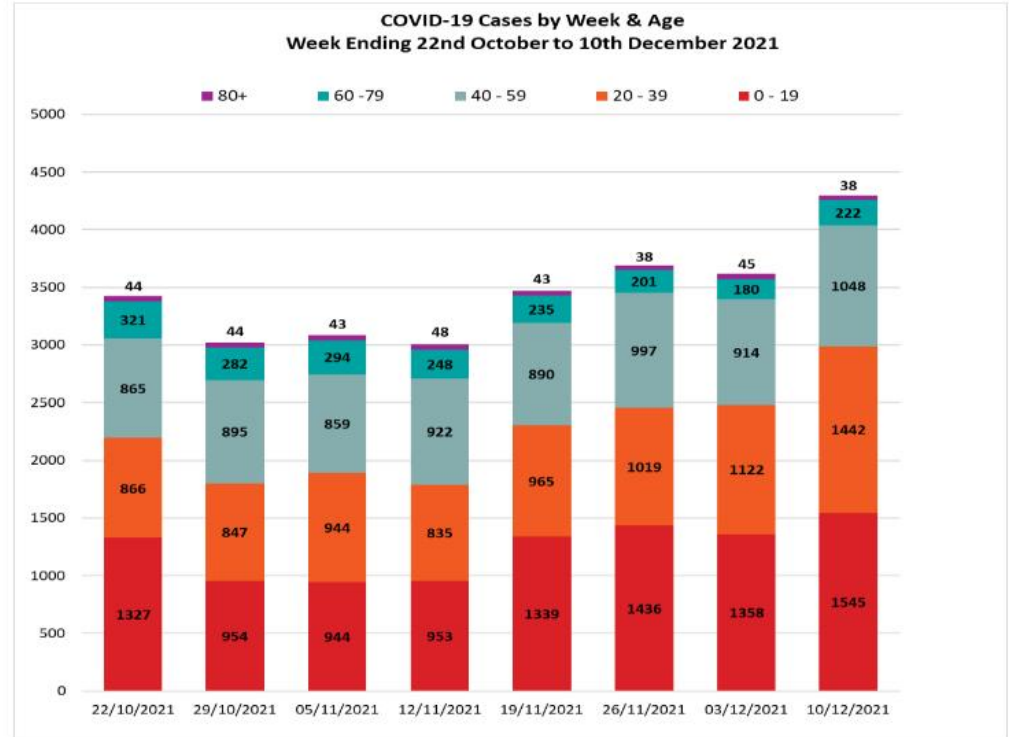
Case Demographics



Cases by Week & Age Group

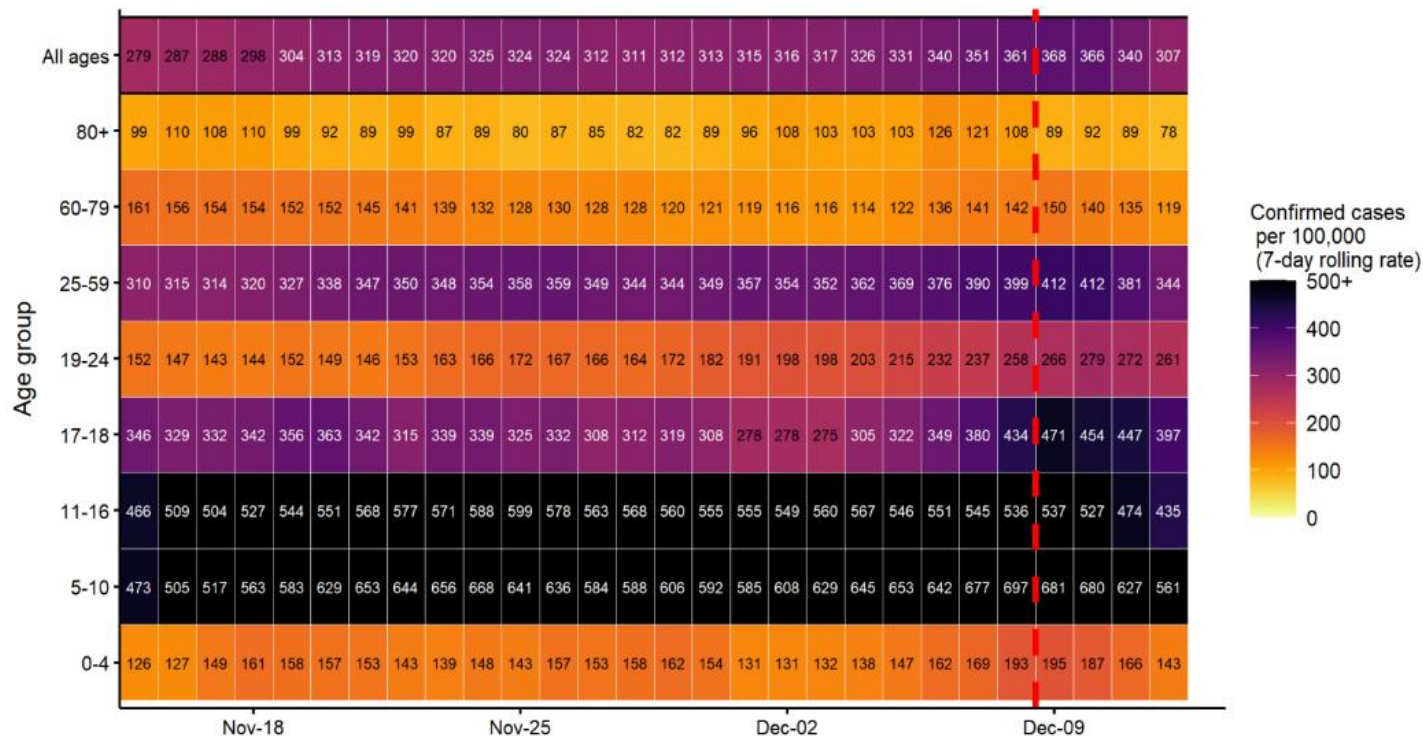
In the 7 days up to 10th December, cases increased in all age groups, except the 80+ age group which decreased by 15%.

The largest increase was seen in the 20-39 age group (28%), followed by an increase of 23% in the 60-79 age group.



Cases are grouped by week ending Friday

Age-Specific 7-Day Rolling Case Rates per 100,000 Population in Birmingham: 15th November to 12th December 2021

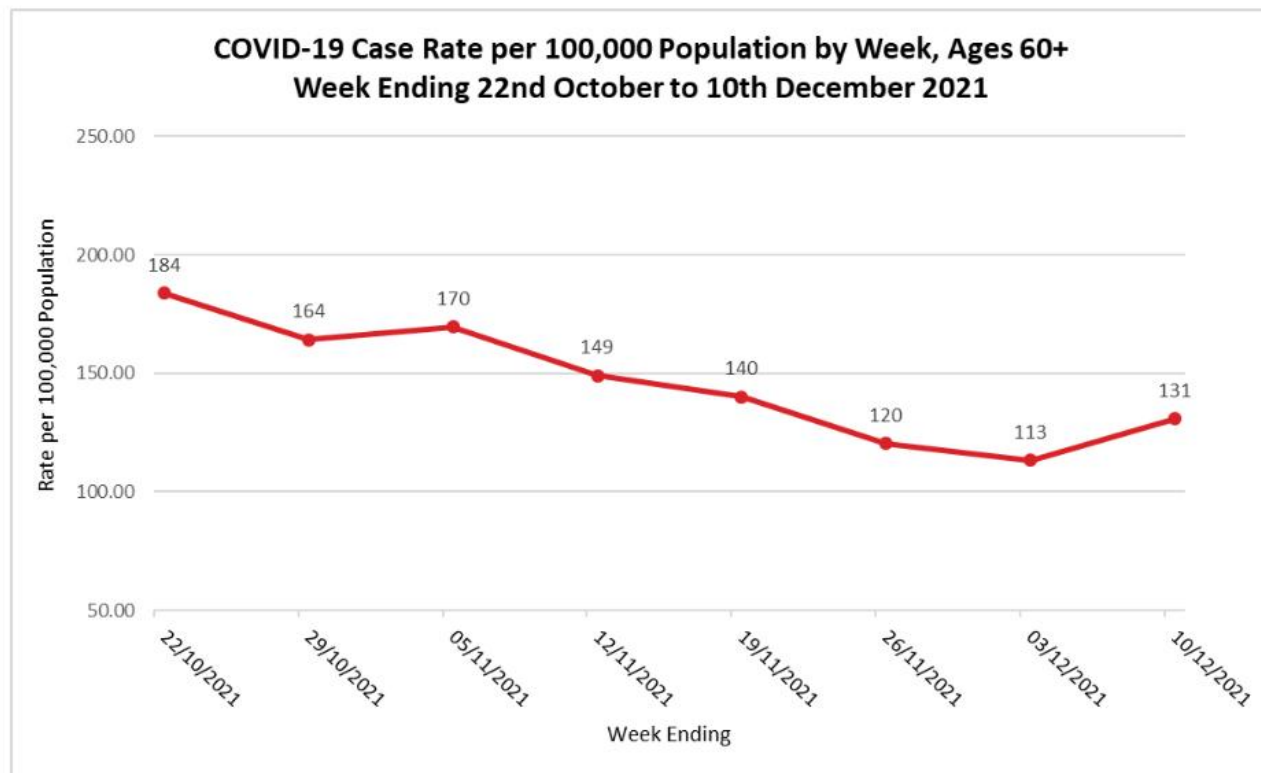


The red dashed line denotes the 4 most recent days data are provisional.

Case Rate in Population aged 60+ years

Following a peak in late October, case rates in the 60+ age group have fallen in recent weeks.

However, compared to last week, the case rate has increased by 15%, from 113/100k, to the current rate of 131/100k.



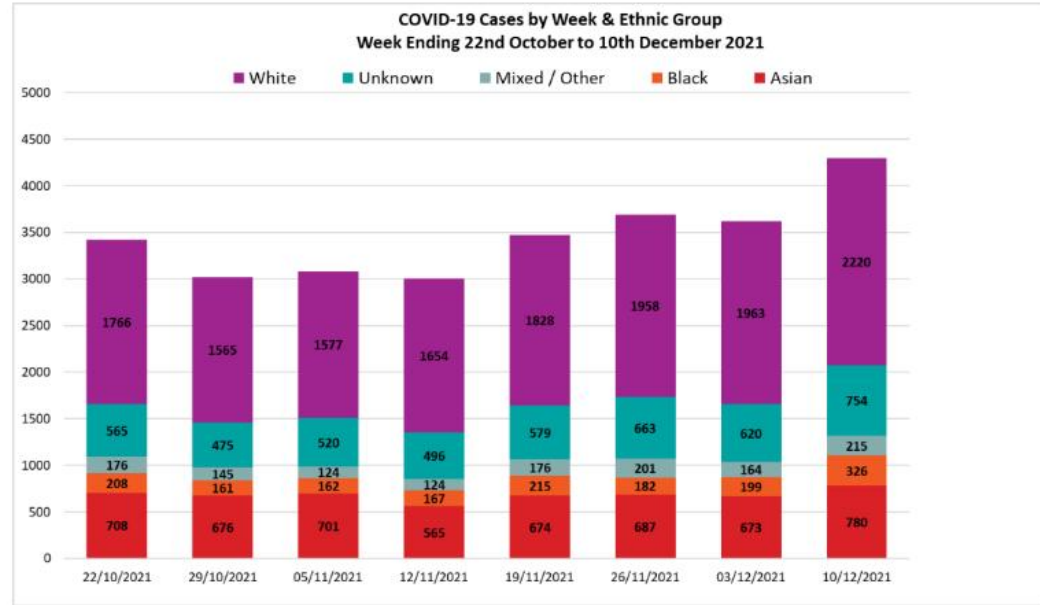
Cases are grouped by week ending Friday

Cases by Week & Ethnic Group

Cases increased in all ethnic groups in the 7 days up to 10th December 2021.

The White ethnic group had the highest number of cases (2220), an increase of 13% compared to the previous 7 days.

The Black ethnic group reported 326 cases, an increase of 63% compared to the previous 7 days.



Cases are grouped by week ending Friday

COVID-19 Case Rates by Ethnicity

Overall, cases in 7 days up to 10th December (compared to previous week) increased across most of the ethnic groups; except the Bangladeshi, Irish and White/Asian ethnicities.

The ethnicities with the highest case rates were: Any Other ethnicity (559/100k), Any Other Mixed/Multiple ethnicity (578/100k) and Any other White ethnicity (493/100k)

Compared to the previous week, the largest increases were in the White and Black African ethnicity (160.1%), followed by Caribbean ethnicity (93%), and Any Other Black African/Caribbean ethnicity (82.1%)

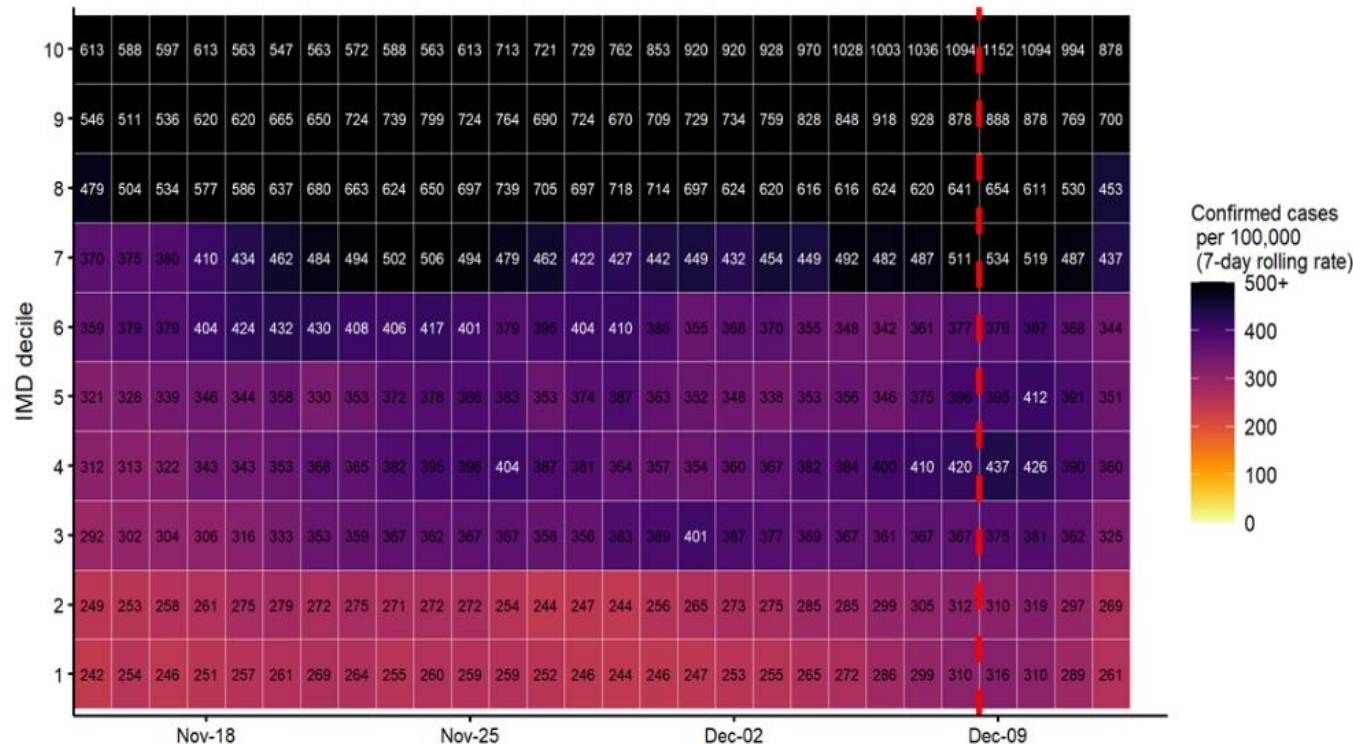
Case rates remain lowest in people of Irish ethnicity (50/100K).

Case Rates by Ethnicity (per 100k) Week Ending 22nd October to 10th December 2021								
Ethnicity	22/10/2021	29/10/2021	05/11/2021	12/11/2021	19/11/2021	26/11/2021	03/12/2021	10/12/2021
African	296.8	206.7	226.7	250.1	290.1	273.4	333.4	460.1
Any other Asian background	227.9	231.2	244.0	199.0	179.8	266.5	256.8	311.4
Any other Black/African/Caribbean	122.8	90.8	112.1	85.4	138.8	154.8	149.5	272.3
Any other ethnic group	559.9	394.7	330.5	367.2	550.8	587.5	459.0	559.9
Any other Mixed/Multiple ethnicity	401.1	471.9	295.0	353.9	448.3	613.5	530.9	578.1
Any other White background	420.8	424.3	317.4	413.9	389.8	551.9	479.5	493.3
Bangladeshi	252.1	218.2	233.6	181.4	215.2	190.6	230.5	212.1
British	285.2	250.1	257.6	267.1	297.4	313.6	317.8	362.3
Caribbean	201.5	172.1	153.2	159.5	214.1	149.0	149.0	287.6
Chinese	180.9	173.1	133.7	47.2	173.1	259.6	204.5	251.7
Indian	297.1	216.6	201.2	227.5	229.0	267.7	261.5	335.8
Irish	81.7	72.7	72.7	50.0	86.3	45.4	54.5	50.0
Pakistani	235.1	256.5	278.0	201.2	261.4	232.3	223.3	252.4
White and Asian	223.5	116.2	196.7	107.3	223.5	223.5	205.6	196.7
White and Black African	124.1	341.3	279.2	155.1	155.1	279.2	155.1	403.4
White and Black Caribbean	210.4	153.7	129.4	149.7	194.2	206.3	165.9	283.2

Cases are grouped by week ending Friday

Excluding ethnicity data classified as unknown/not available

Index of Multiple Deprivation-Specific 7-Day Rolling Case Rates per 100,000 Population in Birmingham: 15th November to 12th December 2021



Using Index of Multiple Deprivation (IMD) of LSOA of usual residence (1 = most deprived; 10 = least deprived). Where an IMD is not present in local denominator data, it is not shown.

The red dashed line denotes the 4 most recent days data are provisional.

NHS Situations



**A BOLDER
HEALTHIER
BIRMINGHAM**

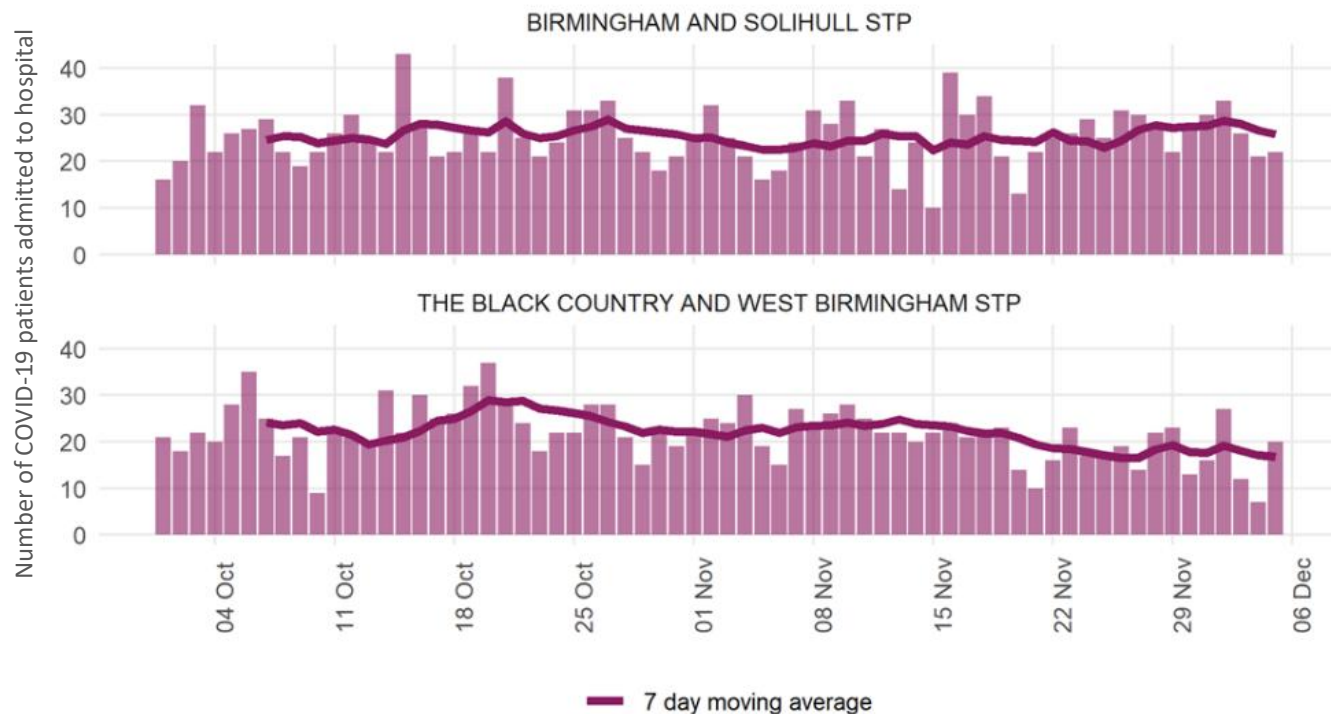


Birmingham
City Council

Covid-19 Hospital Metrics Data

Hospital Trust	Daily admissions 29 th Nov - 5 th Dec	Hospital in- patients 1 st - 7 th Dec	Patients on Mechanical Ventilation 1 st - 7 th Dec
University Hospitals Birmingham NHS Foundation Trust	16	178	25
Sandwell & West Birmingham Hospitals NHS Trust	5	60	13
Birmingham Community Healthcare NHS Foundation Trust	0	10	0
Birmingham Women's & Children's NHS Foundation Trust	2	6	1
Birmingham & Solihull Mental Health NHS Foundation Trust	4	16	0

Daily number of COVID-19 patients admitted to hospital in the Sustainability & Transformation Partnerships (STPs) associated with Birmingham, 13th September to 5th December 2021



Deaths



**A BOLDER
HEALTHIER
BIRMINGHAM**



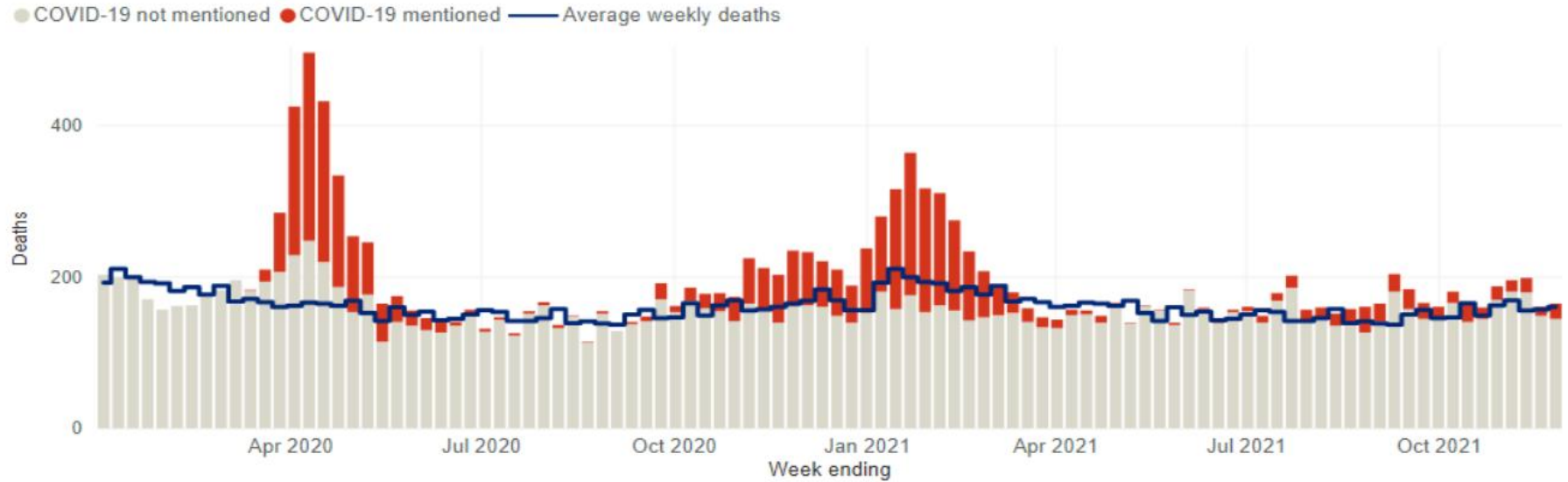
Birmingham
City Council

Death Data

Recent deaths where death occurred within 28 days of a positive COVID-19 test for the week ending 12th December reported **12 deaths**, equivalent to a death rate of **1.1/100k** population.

More accurate data based on COVID-19 being mentioned on the death certificate is more historical. The most recent week reported is for week ending 26th November, which reported **19 deaths** registered in Birmingham. Of these, 12 occurred in hospital, 6 in a care home and 1 at home.

Excess Death: All Deaths up to 26th November



COVID-19 deaths have increased over the last 3 months, and deaths from all causes have been consistently above the 5 year average during this period. However, compared to the earlier part of the year, most of these have been non-COVID deaths.

Situations



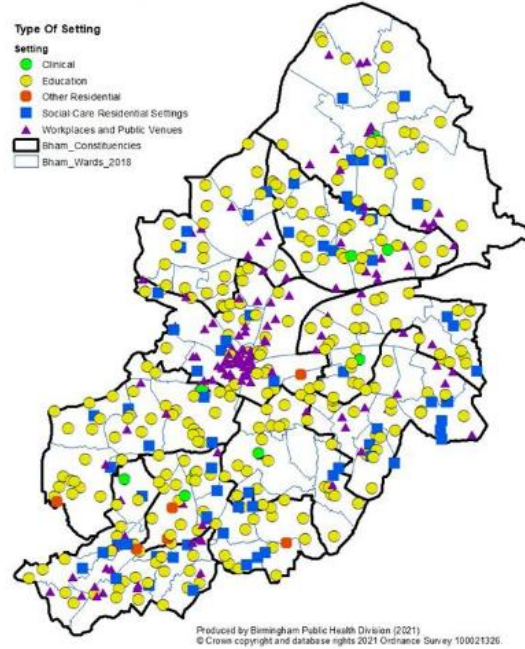
**A BOLDER
HEALTHIER
BIRMINGHAM**



Birmingham
City Council

Confirmed Situations in Birmingham: Last Month & Last 7 days

Situations by Setting Type
13th November - 12th December 2021



Map represents the last month.
One postcode can represent more than one situation

Type of Situation

05 - 12 December 2021

Outbreak



67



-33

Cluster



11



-17

Exposure



30



-45

108 Situations were reported in the week ending 12th December 2021 comprising:
67 Outbreaks,
11 Clusters,
30 Exposures.

Education Settings - 77 situations

Social Care and Residential Settings - 12 situations

Workplace and Public venues Settings - 16 situations

Other Residential Settings - situations -3 situations

There were no **Clinical situations** this week

Situations Awareness

6th December - 12th December 2021

The HPR Team updated 414 notifications on the App during the week 6th - 12th December. Of these, there were 108 current situations.

Education notifications were 228, of which 77 are current situations. There were 59 outbreaks and 7 clusters, of which 58 had 10 or more cases.

Clinical, Residential & Adult Social Care notifications were 92, of which 15 are current situations. There were 6 outbreaks, none of which had 10 or more cases. There were also 2 clusters.

Workplace & Public Venue notifications were 85, of which 16 are current situations and there were 2 outbreaks and 2 clusters.

There were 9 notifications of Variant of Concern.

Common Exposure Events Reported by Cases Resident in Birmingham

Number & percentage of weekly exposures by setting: 3rd October to 11th December

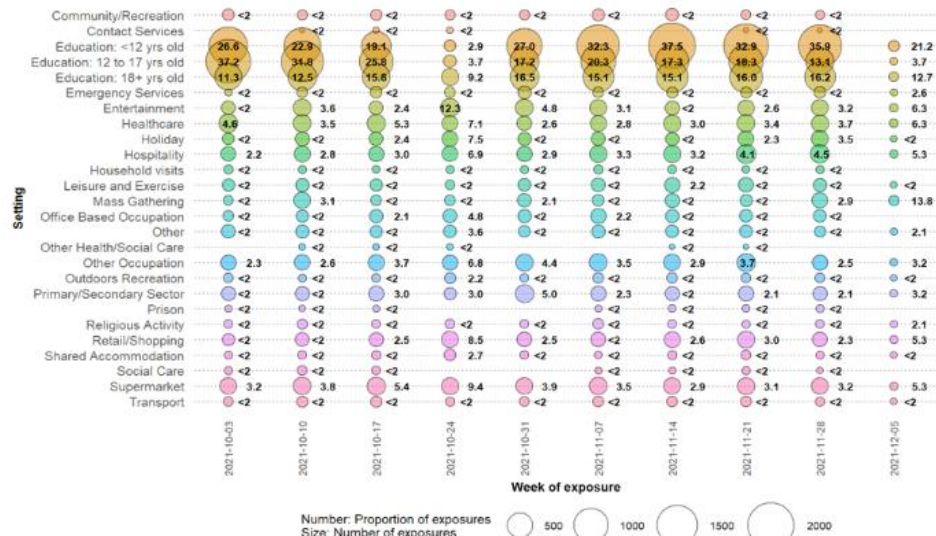
Number and proportion of cases reporting backwards events that have common exposures by week of symptom onset

Produced 2021-12-12 with data up to prior day.

Number of cases reporting common exposures* (Proportion out of cases reporting backwards events)**	1449 (72.5)	1606 (73.9)	1464 (72.4)	1156 (65.6)	887 (60.1)	1340 (70)	1731 (73.3)	1601 (72.7)	1688 (72.4)	1018 (69.1)
---	----------------	----------------	----------------	----------------	---------------	--------------	----------------	----------------	----------------	----------------

Number (size of circle) and proportion (number) of common exposure events by setting and by week of event

Produced 2021-12-12 with data up to prior day.



Number: Proportion of exposures
Size: Number of exposures

Data is grouped by 7 day period. The most recent 14 days may not have complete data yet.

Only backwards events reported by cases that have completed enhanced contact tracing and have a valid postcode are included.

Common exposures are defined as specific venues visited by at least 2 cases during their pre-symptomatic period (2-7 days prior to onset) on the same day or up to 7 days apart.

*Number outside bracket: Number of cases reporting common exposure events, by onset date or specimen date if unavailable.

**Number inside bracket: Proportion of cases reporting common exposure events out of cases reporting backwards events, by onset date or specimen date if unavailable.

Over the last week, common exposures occurred in the **<12 years old** (21.2) settings, **Education 18+ years old** (12.7) and the **Education 12 to 17 years old** (3.7). All these settings decreased compared to the previous week.

Most other settings increased particularly the **Mass Gathering** setting (0 - 13.8) and **Entertainment** and **Healthcare** settings, both 6.3.

Common exposures **are not** proof of transmission in a setting but provide evidence of where transmission **might** be taking place.

Reported in the 2-7 days before symptom onset, where at least 2 cases visit the same property 2-7 days before symptom onset and within 7 days of each other, by setting type and date of event. Data is grouped by 7 day period. The most recent 14 days may not have complete data yet.

Contact Tracing



Contact Tracing Local Authority Partnership

Service Highlights

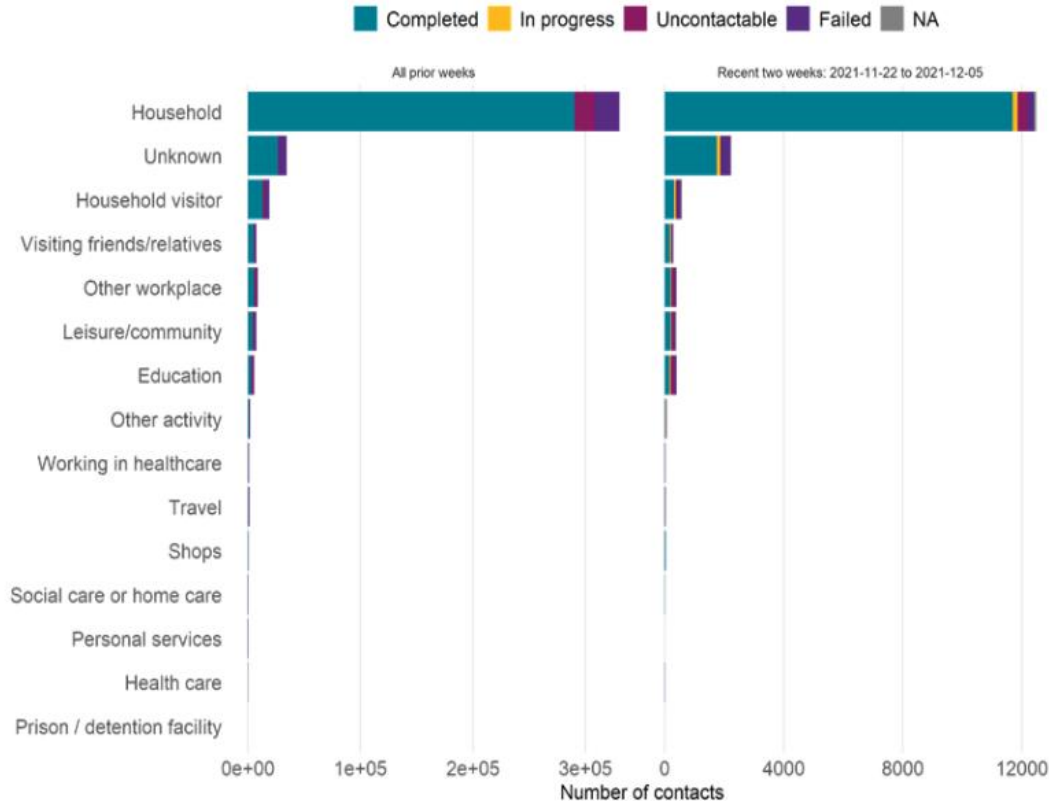
- Contact Tracing Service now **covers all Birmingham wards in LTP model having dropped our Local-4 wards on 13/12/2021.**
- A team **providing face-to-face visits** is in place for positive cases that:
 - **cannot be reached by telephone** (2 attempts, including voicemail and texts). These are referred to Environmental Health for follow-up (approx. 2-3 cases/day at present).
 - **refuse to self-isolate.** These are referred to Environmental Health for follow-up visits (approx. 4 cases/day) and if necessary escalated to the Police however the police are currently only dealing with the most severe of isolation breaches.
- The service also **provides support and welfare services to those who require food, financial or general support** during their isolation

Latest Updates

- **Case Tracing:** For the **previous 7 days we handled 1638 cases** vs 1050 in the previous week. Of those 1093 were complete giving us a completion rate of 67%. Omicron has resulted in a massive increase in cases, but we have absorbed a lot of this additional work through optimised working and reducing the number of call attempts to just 2.
- **Welfare Support:** For the **previous 7 days we handled 333 support cases** vs 179 in the previous week.
- On 13th December, we removed our Local-4 wards and moved solely to an LTP model. This was done due to the rise in cases.
- Data on vaccine hesitancy has been provided to the comms and engagement team with further planned work to offer them more granular data.

Test & Trace Contacts by Exposure/Activity Setting & Current Outcome:

28th May 2020 to 12th December 2021



Over the past 2 weeks, the most common exposure/activity setting has been the **Household**, followed by the **Unknown** category.

A slight decrease in the **Household** and **Unknown** categories has been observed in the last two weeks. The 'Unknown category' is where data on exposure/activity setting were not provided.

In the past two weeks, over 13,600 contacts were successfully completed, i.e. asked to self-isolate.

Data collected by NHS Track & Trace (NTAT).

Uncontactable cases: insufficient contact details provided to contact the person.

Failed contact tracing: contact tracing team attempted but did not succeed in contacting an individual.

Communications & Engagement



Communication and Engagement Plan



1- Support understanding and awareness of guidance and control measures



2 - Enable partnership working to deliver the local plan



3 - Establish appropriate and effective channels for delivery of the plan



4 - Assess impact and reflect the evolving evidence base on behavioural insight



**A BOLDER
HEALTHIER
BIRMINGHAM**



**PROUD
MOST
CITY**



Communication Channels

Content

- Promoting personal responsibility since 'COVID-19 is not over'. **Vaccination** for 12-15, 16–17-year-olds, all adults, boosters, myth-busting, and details of walk-in centres across Birmingham (**grab a jab**). **Testing**; LFD test pick-up locations Birmingham. **Safe behaviour**; face covering, new isolation rules, Covid-19 App, travel especially around events and celebrations, Omicron variant update as it develops.

Audiences

- Key stakeholders across the city in education settings, businesses, champions, faith and BAME groups.

Online and Community Q&As, Radio, Podcasts & TV (with Dr Justin Varney and our Public Health Consultant)

- 29 November 2021 - Omicron variant Birmingham response – Central TV, Free Radio, BBC West Midlands

Emails & Newsletters

- Public questions on Covid-19 fatigue; social media poll and Be Heard survey. Birmingham City Council internal communications (12k staff). Self-care awareness week: Covid-19 safe behaviours as self-care.

Verbal: Word of mouth communication via communities about 'COVID-19 is not over', personal responsibility, 12-15, 16-17 and 18+ vaccination, and encouraging safer behaviour.

Digital Engagement: March to November 2021



Social Media – Healthy Brum

March 1st – 31st November



Instagram

Reach – 40k

Impressions – 43k

Facebook

Post reach – 89k

Engagement – 1.2k

Twitter

Post engagements – 2.7k

Post traffic (clicks) – 26k

Website

Over 500,000 visits to COVID-19 pages

Website Updates:

- Translated Vaccine toolkit and slides
- Accessible BSL resources
- Champions COVID-19 dashboard
- Reviewing web content to ensure all guidance is up to date
- Creating a new resources hub to ensure more consistent and easily accessible resources access for public and stakeholders

Partner Website Updates

- Latest vaccination walk-ins
<https://www.birminghamandsolihullcovidvaccine.nhs.uk/walk-in/>
- Available communications shared:
<https://www.birminghamandsolihullccg.nhs.uk/get-involved/campaigns-and-toolkits>

Social Media Key messages

COVID-19 Risks and Safety Tips

- Testing: LFD, PCR
- Safe behaviour: Birmingham Frankfurt Christmas Markets, Black Friday, Events inc. Bonfire and Diwali, Christmas shopping. Self-care week and World kindness day – safe behaviours as acts of self-care/kindness.
- Omicron updates

Vaccination

Vaccination and boosters: still first line of defense for all eligible inc. pregnancy, mandatory care home staff, 12-15 years, 16-17 years, adults.

Wider Public Health Topics

Creating a bolder healthier city, winter ready, flu vaccine.



**A BOLDER
HEALTHIER
BIRMINGHAM**



Communication and Engagement updates November 2021



A selection of some of the content we have published

FRAUD ALERT

Healthy Brum

35,29K Tweets

Follow

Healthy Brum @healthybrum · 4 Dec
1/2-Criminals are exploiting fears about COVID-19 and the Omicron variant. Scams target all members of the public and can be difficult to recognise. Scams can target older and vulnerable people who are isolated from family and friends.

For more info visit ow.ly/5Uop5OHIG7w



Healthy Brum @healthybrum · 5 Dec

Meeting friends or family during Hanukkah? Enjoy but please be safe by following these COVID-19 safe behaviours: watch the video below to find out how you can keep your family COVID-19 safe.



MENTAL HEALTH

Healthy Brum

35,29K Tweets

Follow

check in on each other. The Good Grief Trust recommends that you take a walk and have a talk with somebody. We advise that you wrap up warm and meet outdoors to protect you and others from COVID-19



Healthy Brum

35,29K Tweets

Follow

Healthy Brum @healthybrum · 2 Dec

NEW COVID-19 Omicron & Winter Guidance for Mosques

The @MuslimCouncil and @Birmingham have produced top-line guidance outlining key control measures that Mosques should consider taking to limit community spread.

ow.ly/23Aa5OH4C3Hn

COVID-19 OMICRON & WINTER GUIDANCE MOSQUE CONTROL MEASURES

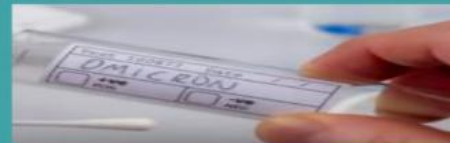
The Prophet (PBUH) said: There is no sickness equal to good planning (Mishkat). We pray that this planning, along with the unity we have seen across our communities, will be rewarded by Allah SWT allowing us to emerge from this crisis stronger than ever.

COMMUNITY ADVICE

- Use of hand sanitiser/washing when entering Mosque
- Wearing a face covering when inside
- Avoid hugging and shaking hands
- Pray at home if you are from a vulnerable group (i.e. elderly or have underlying health conditions)
- Use own prayer mat in Mosque
- Be mindful of others in Mosque they may prefer to socially distance
- Do not go to Mosque if unwell, showing any flu like symptoms

OMICRON VARIANT

WHAT IS THE NEW OMICRON VARIANT???



Omicron variant FAQs



Omicron Variant FAQ



Omicron is a variant of SARS-CoV-2, the virus that causes COVID-19.

Variants are different types of the virus that have small changes in the structure of the virus, usually to the outside layer of the virus. The changes happen when the virus makes more viruses and are called mutations. Most changes don't make much difference but for Omicron the changes are making the virus more infectious than it was before. We don't know yet what the changes mean for how sick this new variant makes you.

What is the
Omicron variant?



A BOLDER
HEALTHIER
BIRMINGHAM



Communication and Engagement updates November 2021



A selection of some of the content we have published

Testing Message



Face Masks



Christmas Message



**A BOLDER
HEALTHIER
BIRMINGHAM**



Community and Partnership engagement

Provider Spotlight

Our Commissioned community providers conduct some excellent engagement activities within Birmingham;

The Bahu Trust

- Delivery of LFT kits to community surgeries, Friday prayers, residents and businesses
- Continued engagement with various communities, telephone befriending services, follow up door knocking, excellent use of social media
- Continued messaging around safety measures

BID Services

- Holding workshops for deaf communities on COVID-19, creating videos and posters promoting LFT workshop
- Partnership working with other providers (CommPlus) who create BSL content
- Supporting clients to book PCR tests before holidays, support on vaccine bookings, promotion of vaccine vans



Community and Partnership engagement



**BIRMINGHAM'S YOUTH
COVID CHAMPIONS**

WE NEED YOU!

- If you are between 11 and 18 years old and live/work in Birmingham, join our Youth COVID Champions Programme.
- You'll be invited to exclusive Public Health webinars and Q&As
- Receive the latest COVID advice and guidance directly from Birmingham City Council Public Health
- Be empowered to share this reliable information with people in your network - family, friends and community to keep our city safe

Want to become a Youth COVID Champion? Simply email:
✉ Juliet.C.Faulkner@birmingham.gov.uk



Celebrating our Youth COVID Champions!

We're celebrating the recruitment of 90 Youth COVID Champions- a brilliant milestone!

- Since the launch of the programme earlier this year, the Council's Youth Service have been working tirelessly to support young people around the city.
- Our Youth COVID Champions have been empowered to act as young leaders within their local communities to champion COVID causes.
- We're incredibly proud of their work as they continue to deliver important messages to those who need them most. Keep up the great work!

Public Health Team works with the Council's Youth Service Team to continue to engage Young people to join the Youth COVID Champions across the city. Please contact Juliet.c.faulkner@birmingham.gov.uk

Community and Partnership engagement



Omicron Variant

In response to the developing situation with the Omicron variant, additional assets have been produced by both central government and Birmingham City Council to help providers to inform their communities of the changes to COVID-19 guidance and rules.

The **Government assets did not contain information in accessible formats**, therefore BCC worked with CommPlus to produce an asset summarising all of the new measures with **BSL additions**.

BSL version shared via CommPlus and Bid social media pages: received a further **6 shares so far**.

Central Government



Birmingham City Council



Community and Partnership engagement



Content Shared

Key Messages

Content shared has had a focus on the following messages:

- Staying safe during Hanukkah
- 12-15 vaccine availability at walk in sites
- Omicron updated COVID measures
- Expansion of the vaccination/booster programme

**12 - 15 years olds,
you can now get
your COVID-19
vaccine at a drop-in
centre**

No appointment needed



**To get your drop-in
vaccine, you must be:**



accompanied by a parent or
guardian



a Birmingham or Solihull
resident



For an up-to-date list of
all walk-in locations
search **"COVID-19
vaccinations for 12-15
year olds in Birmingham
and Solihull"**

**Tips for staying
COVID-19 safe**

**Happy
Hanukkah**



1

Meeting outdoors is safer. If you meet
indoors, let fresh air in.

2

Wear a face covering in crowded
settings

3

Get tested, and self isolate if required

4

Download and use the NHS COVID-19
app to know if you've been exposed
to the virus



**A BOLDER
HEALTHIER
BIRMINGHAM**



COVID Champions Programme

To raise awareness of COVID-19 and safer behaviour within communities



Coverage of champions across all 69 wards (8/12/21)
820 Community , 90 Youth and 20 Business Champions

Key themes discussed: Omicron, Vaccine effectiveness and the importance of testing, Travelling during the festive season

- Engagement via fortnightly webinars and newsletters
- Collaboration with champions to obtain feedback about communities via email, webinars & social media with thematic analysis
- Creating specific Omicron FAQs
- Vaccination Toolkit co-created to support champions and their communities
- Recruitment of new champions and engagement via regular meetings
- Independent review of champions programme complete (led by Birmingham University)
- Good representation of people from different faiths and backgrounds

Want to become a COVID champion?
Find out more [here](#)

Birmingham Covid-19 Champions
~ December 2021



Produced by Birmingham Public Health Division (2021)
© Crown copyright and database rights 2021 Ordnance Survey 100021326



A BOLDER
HEALTHIER
BIRMINGHAM



PROUD
HOST
CITY



Birmingham
City Council

Engagement with Faith Groups

- Supporting faith groups by sharing key messages in their settings
- Engaged with Birmingham Masjids, Black Led Churches and Interfaith group by hosting fortnightly virtual meetings to share COVID-19 updates with local GPs in attendance to support clinical questions
- Addressed specific FAQs created to tackle Omicron and government Plan B guidelines

Spotlight on Christmas & winter messages

Safety messages at large Masjids

- Joint communications with NHS to create specific covid-19 safety message
- Working with larger Masjid's to share COVID safety messages during Friday sermons

Christmas messages at Churches

- Joint communications with NHS to create specific covid-19 safety messages especially at Christmas time
- Creation of video's by trusted voices in the faith communities

Vaccine engagement



Addressing Vaccine Inequalities

- Establishment of Task & Finish Group scoping pilot projects for multi-agency, data-led vaccination/engagement drives in isolated communities
- Liaison with NHSE regarding pilot project to target BABAC communities in West Birmingham – scoping provision of roving vaccination model with T&F Group
- Liaison with BSOL Oversight Group regarding engagement activities across the board
- Liaison with Ladywood/Perry Barr ICP regarding participation in forthcoming 'Health Hack' comms & engagement discussion of C-19 vaccine in pregnancy - Saltley Academy, 13th Dec

Outreach to Alum Rock vaccination drive: 18th & 19th Dec:

- Targeted pilot project working with NHS and BCC Housing Dept to provide additional vaccination opportunities at two community pharmacies in Alum Rock / B8 postcodes
- Housing officers to engage directly with approx. 200 households on a door-to-door basis to raise awareness, signpost and assist.
- Design/distribution of bespoke leaflets, posters, Q&As in multiple languages
- Engagement briefings for housing officers

**GET A
COVID-19
VACCINATION
AT YOUR
LOCAL
PHARMACY**

NHS

Offering first, second and booster doses

DISPHARMA CHEMIST

Afsar Store, 183 Alum Rock Rd, Alum Rock,
Birmingham B8 1NJ

Sat 18 December – 10am to 5pm

Sun 19 December – 10am to 4pm

No appointment necessary



For further information visit:

www.birminghamandsolihullcovidvaccine.nhs.uk



**A BOLDER
HEALTHIER
BIRMINGHAM**



Further Work in Development



Representation

- Continue to working partnership and strengthening of relationships with our 18 existing commissioned partners and encourage the delivery of a minimum of 10 befriending/non-digital channels for those communities with limited digital access.
- Accelerate existing engagement to support understanding and the uptake of testing, vaccination, recovery and any emerging themes working with all communities directly or via partners and key stakeholders.
- Asset mapping of 69 wards including demographic information, COVID cases, vaccine uptake by ward, commissioned provider summary, main community needs/PH concerns, important contact information to highlight gaps in our current engagement work, scope and commission further partners if required to reach underrepresented communities.

Reach

- Review the COVID Champions network and recruitment to enhance communications and engagement and local asset leverage to improve relationships with communities and their understanding of vaccines, testing and “learning to live with Covid”.
- Champions Feedback. Encourage champions to share stories on the Newsletter ‘Champions’ corner’ to support with wider reach across communities.
- Working with communities and partners to support and focus on more engagement across the City.
- Conversations with influencers within the Black Community to address low uptake of COVID-19 vaccine.

Response

- Collating responses from champions and faith settings in relation to Vaccine toolkit and isolation pack.
- 'You Said, We Did' – WhatsApp communication set-up.
- Progressing on monitoring commissioned partners fund through Ministry of Housing and Local Communities (MHCLG) grant for Communications and Engagement programme to strengthen our relationships with groups during the pandemic.





For more information please visit
www.birmingham.gov.uk/commonwealth2022

