

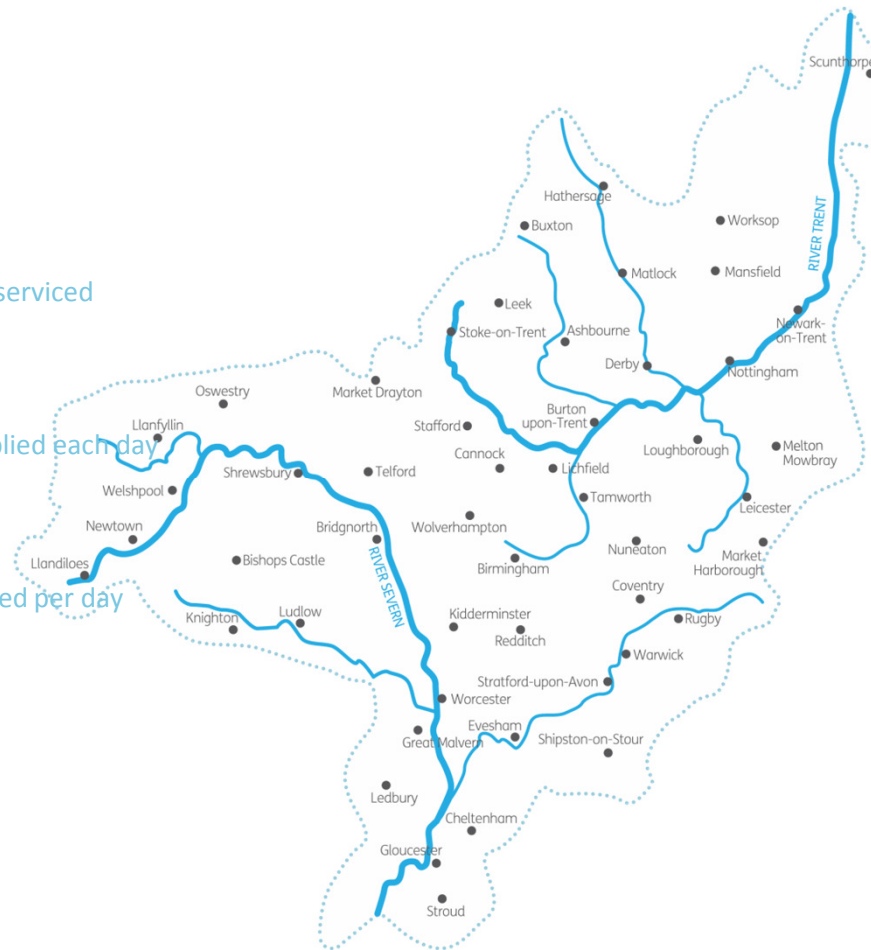


SEVERN TRENT WATER BIRMINGHAM RESILIENCE PROJECT

SEVERN
TRENT
WATER

SEVERN TRENT WATER

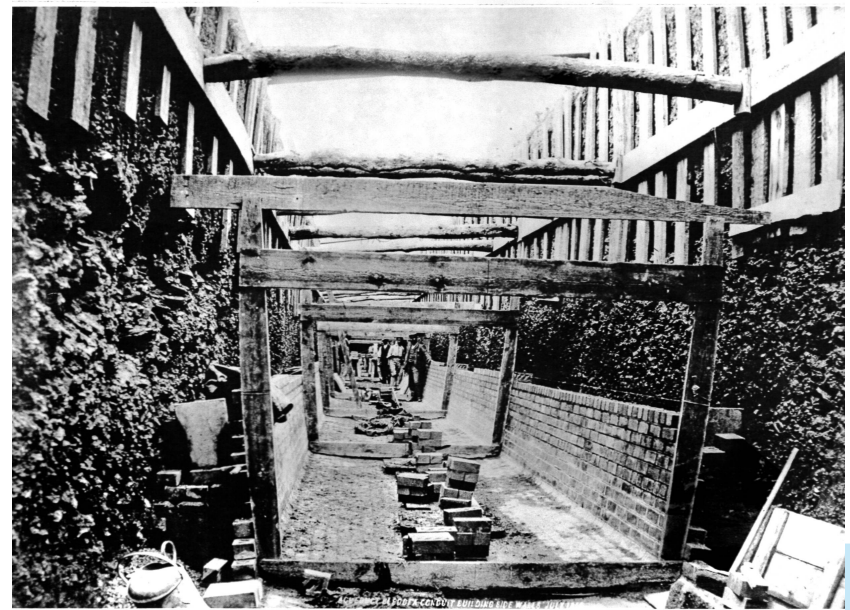
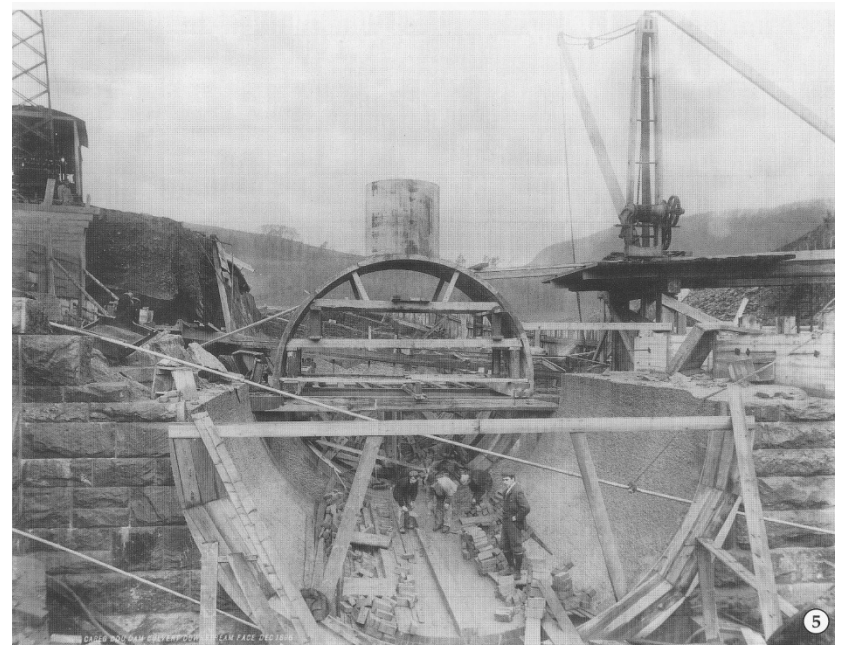
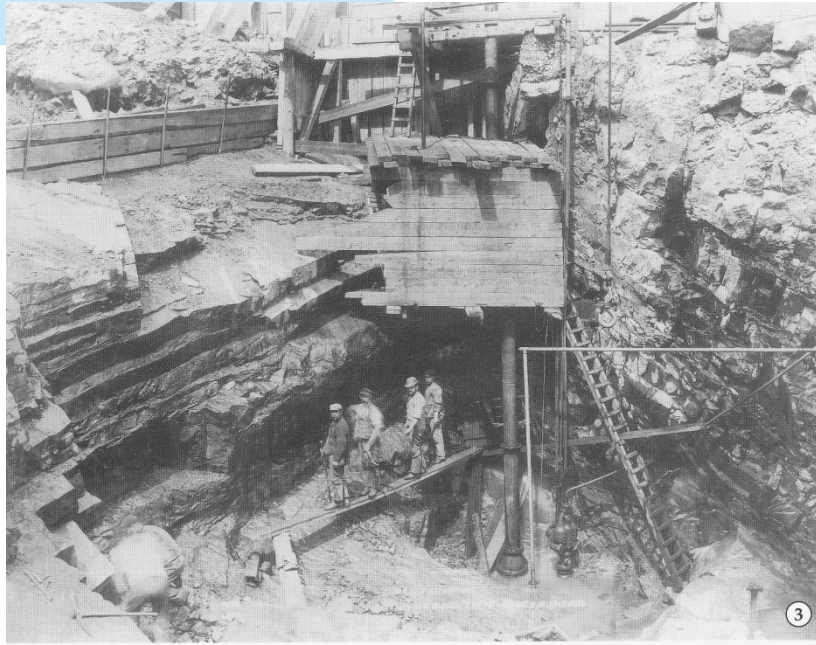
One of the largest of the 10 regulated water and sewerage companies in England and Wales. We provide high quality services to more than 4.3million households and businesses in the Midlands and mid-Wales.



BIRMINGHAM RESILIENCE PROJECT

Making Birmingham more resilient

- *For over a century, most of Birmingham's water has flowed down the Elan Valley Aqueduct (EVA) from reservoirs in the Welsh hills. The aqueduct is over a hundred years old and needs maintenance to keep it in service, which means draining it for extended periods.*
- *At the moment we can only shut down the aqueduct for 5 days with 3 days to carry out work.*
- *The Birmingham Resilience Project (BRP) will provide an alternative source of water during those maintenance periods and will be used for up to 50 days every other year.*
- *This is the biggest engineering challenge we have ever set out to do*



BIRMINGHAM RESILIENCE PROJECT

Getting permission for the project

- *Our plans have been approved by our regulator, OFWAT and we're currently consulting on the detailed pipeline route. We intend to submit planning applications in the next few weeks.*
- *An abstraction licence 'pre-application' has been approved by the Environment Agency and we've now submitted the full application*
- *Work is ongoing to complete the planning applications and Environmental Impact Assessment and we remain on-track to submit in the next few weeks.*
- *Our pilot plant has been in operation at Trimley Works since April 2015 and is performing well.*

BIRMINGHAM RESILIENCE PROJECT

Telling people about our plans

- *We're engaging positively with key stakeholders, including the Environment Agency and the Drinking Water Inspectorate.*
- *A 'launch event' for Birmingham stakeholders (OFWAT, Councillors, MPs etc) was held on the 16th October 2015 and received very positively.*
- *Press activity is increasing, reflective of our partnership arrangement with Trinity Mirror (B'ham Post/Mail) and also remains very positive.*
- *We've carried out two rounds of public drop-in sessions along the pipeline route with fantastic attendance rates.*
- *Work has begun modelling our strategic grid and distribution networks when we are operating in 'river supply' mode. This will allow us to assess (and mitigate) any hydraulic 'bottlenecks' and water quality risks arising from the changing supplies.*
- *Consultation with sensitive business users (and domestic customers) will begin once a full impact assessment has been made.*

BIRMINGHAM RESILIENCE PROJECT

Involving the local community

- *We plan to use local contractors and supplier wherever possible when we carry out construction*
- *We have a full education programme specific to the project which is an add-on to our regular education programme. This will include the usual water efficiency and what not to flush as well as some history of the EVA and also site safety*
- *For older students we will be using the project as an opportunity to talk about STEM subjects and careers*
- *We'll also be engaging with local universities and have already taken on graduate students to work with us*



SEVERN TRENT HELPING OUR CUSTOMERS

Help when you need it

- *A range of channels for customers to contact us*
- *Water Direct*
- *WaterSure*
- *Severn Trent Trust Fund*
- *Water Meters*
- *Assessed charges*
- *The Big Difference Fund*
- *Free water audits for homes*
- *Free and discounted water efficiency products*



BIRMINGHAM RESILIENCE PROJECT

Working in partnership



LOVE OUR NETWORK

Being part of the local community

- *Stop the Block / Sewer Savvy*
- *Water efficiency / Save Water Save Money*
- *Water Quality*
- *Education*
- *Volunteering*

