

Report of:	Cabinet Member for Children Services
To:	Education and Vulnerable Children Overview and Scrutiny Committee
Date:	25 November 2015

Progress Report on Implementation: We Need to Get It Right: A Health Check into the Council's Role in Tackling Child Sexual Exploitation

Review Information

Date approved at City Council:	2 December 2014
Member who led the original Inquiry	Cllr Anita Ward
Lead Officer for the Inquiry	Benita Wishart
Date progress last tracked:	General update received on 18 March 2015

1. In approving this Inquiry the City Council asked me, as the appropriate Cabinet Member for Children Services, to report on progress towards these recommendations to this Overview and Scrutiny Committee.
2. Details of progress with the remaining recommendations are shown in Appendix 2.
3. Members are therefore asked to consider progress against the recommendations and give their view as to how progress is categorized for each.
4. **It is proposed that:**
 - a) Recommendations 1 – 7 are discussed on the 25th November 2015.
 - b) Recommendations 8 – 13 are discussed on the 10th February 2016.
 - c) Recommendations 14 – 19 are discussed on 23rd March 2016 and a visit to be arranged.

5. Introduction

A great deal of work has been undertaken in relation to improving the response of Birmingham City Council and its partners to the terrible crime of child sexual exploitation in the city since the groundbreaking overview and scrutiny report a year ago.

This work has been developed within the new West Midlands CSE framework but has been adapted to fit with the context and complexity of Birmingham. We have a CSE operational group chaired by West Midlands Police to share intelligence about victims and perpetrators, possible locations and patterns which might indicate groups of offending. For individual young people who might be at risk of sexual exploitation we have an agreed risk assessment tool and where young people are considered at risk they are subject to an assessment leading to a plan of support as appropriate. Support can be provided from a highly regarded Barnardos voluntary sector project, through the Council's own family support service or through a child in need/child protection/child in care plan as relevant for each individual young person. In the quarter July

2015 – September 2015 240 young people aged between 11-17 were identified/being worked with who were judged at risk of CSE, 85% of whom were female.

Where young people are deemed at medium or high risk they are discussed at a multi-agency sexual exploitation (MASE) meeting chaired by a CSE co-ordinator in children's services. Each MASE meeting results in a plan which is followed up and reviewed. MASE meetings focus on the needs of individual young people and their families, but the intelligence from such meetings is aggregated and taken to the monthly CSE operational group.

This year we have built upon the success of the groundbreaking injunctions taken out last autumn by taking action around the licensing of premises which were a risk to vulnerable young people. We have also developed innovative work with young people in both family support and social work, including a CSE resource tool kit, to build resilience and help young people make positive choices about their behaviour and relationships.

The CSE partnership is a sub group of the Birmingham Safeguarding Children Board and one achievement this year has been the production of a film, BAIT, designed with a learning pack for teenagers in secondary school to support their personal health and social education.

It is in this context of considerable progress in establishing multi-agency systems and processes and identifying many more potential victims and perpetrators that the actions below from the Overview and Scrutiny CSE Report have been taken forward.

Appendices

1	Scrutiny Office guidance on the tracking process
2	Recommendations you are tracking today
3	Recommendations tracked previously and concluded

For more information about this report, please contact

Contact Officer:	Alastair Gibbons
Title:	Executive Director for Children Services
Telephone:	0121 675 7743
E-Mail:	Alastair.gibbons@birmingham.gov.uk

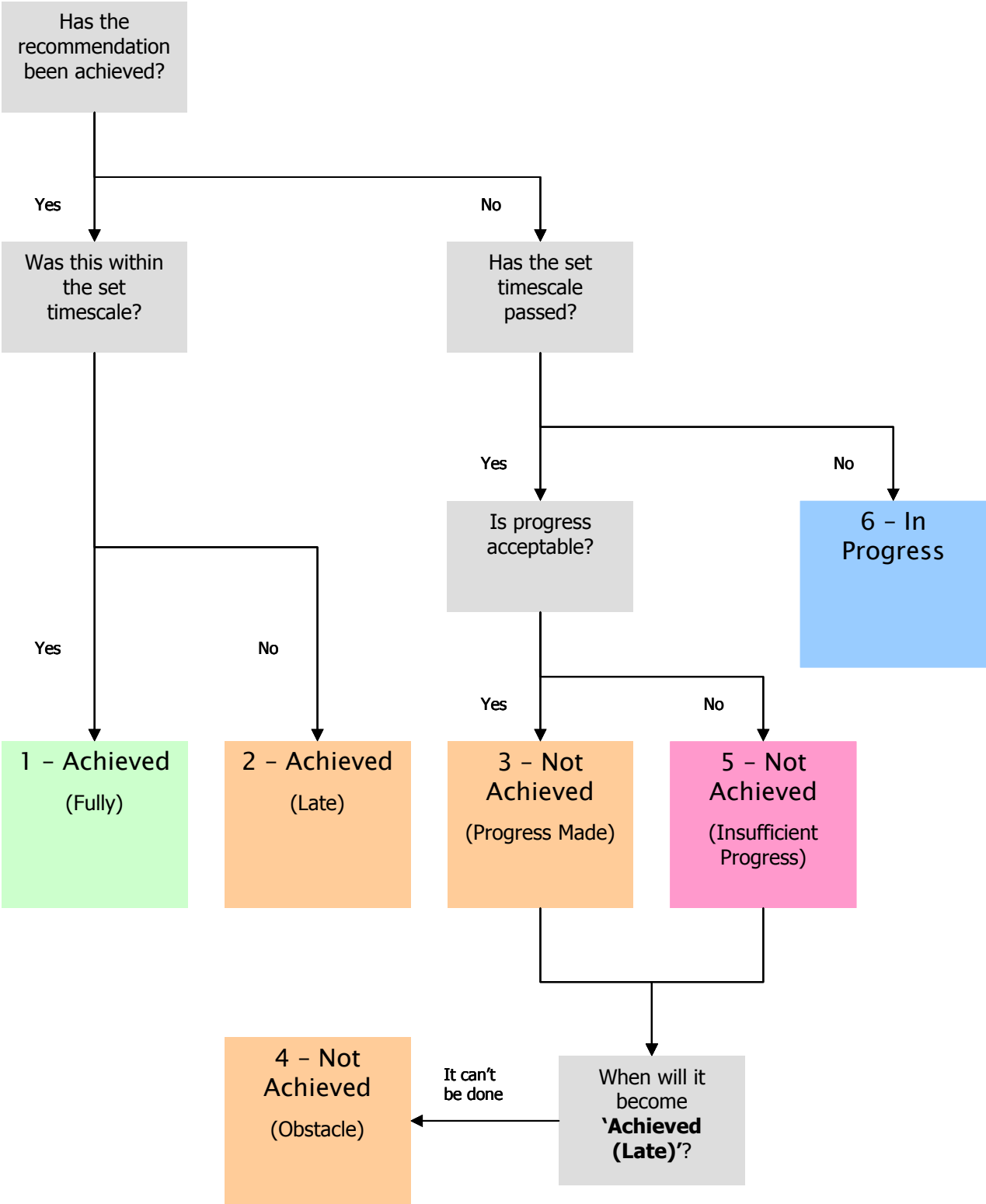
Appendix 1: The Tracking Process

In making its assessment, the Committee may wish to consider:

- What progress/ key actions have been made against each recommendation?
- Are these actions pertinent to the measures required in the recommendation?
- Have the actions been undertaken within the time scale allocated?
- Are there any matters in the recommendation where progress is outstanding?
- Is the Committee satisfied that sufficient progress has been made and that the recommendation has been achieved?

Category	Criteria
1: Achieved (Fully)	The evidence provided shows that the recommendation has been fully implemented within the timescale specified.
2: Achieved (Late)	The evidence provided shows that the recommendation has been fully implemented but not within the timescale specified.
3: Not Achieved (Progress Made)	The evidence provided shows that the recommendation has not been fully achieved, but there has been significant progress made towards full achievement. An anticipated date by which the recommendation is expected to become achieved must be advised.
4: Not Achieved (Obstacle)	The evidence provided shows that the recommendation has not been fully achieved, but all possible action has been taken. Outstanding actions are prevented by obstacles beyond the control of the Council (such as passage of enabling legislation).
5: Not Achieved (Insufficient Progress)	The evidence provided shows that the recommendation has not been fully achieved and there has been insufficient progress made towards full achievement. An anticipated date by which the recommendation is expected to become achieved must be advised.
6: In Progress	It is not appropriate to monitor achievement of the recommendation at this time because the timescale specified has not yet expired.

The Tracking Process



Appendix 2: Progress with Recommendations

A Delivery of training and awareness raising on Child Sexual Exploitation				
No.	Recommendation	Responsibility	Original Date For Completion	Cabinet Member's Assessment
R01	<p>That:</p> <ul style="list-style-type: none"> a) The "see me hear me" web site¹ be further developed and a concerted awareness and empowerment campaign for action is delivered for the public (communities, families and children); b) The City Council and partners work with and build the capacity of a broad range of the city's communities to encourage identification and reporting of CSE; c) Resources and sign-posting to online awareness for parents are promoted²; d) Awareness includes online risks of grooming, the role of the Child Exploitation and the Child OnLine Protection Centre (CEOP)³ and how to locate and use the report abuse button. e) The Cabinet Member Children Services explores how this can be delivered and funded jointly with partners 	Cabinet Member for Children Services	Timescale: Action Plan Feb 2015 & completion April 2015	2 – Achieved (Late)
Evidence of Progress (and Anticipated Completion Date if 'Not Achieved')				
<p>The website 'See Me Hear Me' is managed by Dudley Council. This reflects that much CSE development is part of a West Midlands regional framework, e.g. there is now a West Midlands regional CSE co-ordinator in post. Dudley have confirmed that the website was reviewed and updated in June/July 2015 as part of the relaunch of the framework.</p> <p>The site now contains bespoke topical themes and areas and includes new channels to communicate key messages. These new channels include a video with a short pause to answer a specific question on that piece of video footage.</p> <p>The link to the website will be shared with all Directorate for People staff as a reminder and it already features on birmingham.gov.</p> <p>Place Directorate contributes to raising awareness of CSE to parents and communities. Four specialist Think Family Workers within Housing Services have been trained to deliver CSE awareness briefings to community groups, parents and schools. They will be delivering at least one session per quarter and making a return to the Regional CSE coordinator.</p>				

No.	Recommendation	Responsibility	Original Date	Cabinet Member's
-----	----------------	----------------	---------------	------------------

¹ www.seeme-hearme.org.uk/

² www.paceuk.info/support-for-parents/

³ CEOP is a National Crime Agency Command at ceop.police.uk/

			For Completion	Assessment
R02	<p>That the Cabinet Member and BSCB encourage schools to ensure that:</p> <ul style="list-style-type: none"> a) CSE is integrated into Personal, Social, Health and Economic Education (PSHE) from year 6 upwards into ALL schools in the city and to encourage best practice in understanding and dealing with CSE in schools; b) Healthy relationships and girl's empowerment (e.g. by using the "free being me" resources Girl Guiding campaign) is integrated into PSHE teaching in all years; c) All teaching includes appropriate provision for boys; d) All schools promote safety online including smartphone tracking; and e) All school Head Teachers and recognised Designated Safeguarding Leads (DSL) are written to, raising the issue, asking for a collaborative approach in tackling CSE and for key staff to attend training; and they adapt and agree the new model safeguarding policy from the BSCB. 	Cabinet Member for Children Services	April 2015	2- Achieved (Late)

Evidence of Progress (and Anticipated Completion Date if 'Not Achieved')

Each school in Birmingham is required to complete the section 175 school safeguarding audit released by the BSCB. The 2014/15 audit report specifically asked schools what training the Safeguarding Lead had received in CSE, what training is delivered to the school staff, if the school safeguarding policy covered CSE as a topic and if CSE was included in the curriculum. Analysis of the audit identified that only 3% of responders across the city had not received CSE training in some shape, and it was covered in degrees within the curriculum.

All secondary education providers in Birmingham were written to and provided with a copy of the BAIT training DVD for use within their setting by the BSCB though it is not clear what monitoring was commissioned by the Board to see if the classroom materials were used.

CSE is included in the model safeguarding policy offered to schools as a template for their use. 82% of schools reported recently to using this model. In the rollout of Right Service Right Time to schools which reached 78.6% of schools across the city CSE was presented as a case study to identify the thresholds issue and services available to support vulnerable children, and CSE has been included in the training received by schools on the multi-agency fCAF training for the past 3 years.

CSE has a key topic delivered on 4th, 12th and 17th November 2015 at the Schools Area Safeguarding Conferences. Within this presentation the issue of CSE integration into the PSHE curriculum of health relationships and empowerment is being covered.

The October District Safeguarding Networks (DSN) held for designated safeguarding leads within schools covered the topic of sexting (as only 10% of schools reported they had had training on this topic) and as part of the presentation the grooming of a teenage boy was used as an illustration to show that CSE is a cross gender issue.

E-safety was discussed at the June DSN meetings and the school based tracking system Policy Central and Policy Central Monitor were discussed. This system allows schools to monitor IT use across the school and notifies through a 'screen shot' where an issue of concern is identified; words associated with exploitative practice form part of the trigger response. Work is still required to support Policy Central's roll out across the city and, with schools which elect not to buy the system, around the need to address school responsibilities around monitoring IT usage. To date no work has been undertaken promoting smart phone tracking with school pupils.

No.	Recommendation	Responsibility	Original Date For Completion	Cabinet Member's Assessment
------------	-----------------------	-----------------------	-------------------------------------	------------------------------------

R03	That Governor Support Team reviews safeguarding training provided in the light of this report. ⁴	Cabinet Member for Children Services	April 2015	2 – Achieved (Late)
Evidence of Progress (and Anticipated Completion Date if 'Not Achieved')				
<p>School and Governor Support (S&GS) commissions Services for Education (S4E) as subject experts to deliver the majority of the safeguarding training that is available to governors through the Governor Training Programme.</p> <p>S&GS will consult with S4E over the recommendations of the scrutiny report and request the changes required to the content and key messages given in governor training in order to reflect the Council's role in tackling CSE.</p> <p>CSE is also planned as a topic item in the spring term agenda briefing sent to Chairs of Governors, Head Teachers and Clerks of Governing Bodies to ensure that the issue is raised at governing body level. This briefing is sent out in early November 2015, in advance to help schools plan their spring term agendas.</p>				

No.	Recommendation	Responsibility	Original Date For Completion	Cabinet Member's Assessment
R04	<p>That:</p> <p>a) All frontline staff and managers of caseloads in Children's Social Care including agency staff attend training on CSE. This should include definitions, the grooming line, symptoms and action including what can be done to disrupt / bring charges against and prosecute perpetrators. Particular barriers to disclosure of CSE by black and minority victims should be included in this;</p> <p>b) There is mandatory training on missing children and the escalation system.</p>	Cabinet Member for Children Services	July 2015	3 – Not Achieved (Progress made)

Evidence of Progress (and Anticipated Completion Date if 'Not Achieved')				
<p>Training delivered by Children's Learning & Development Team</p> <p>A specific CSE one day programme has been delivered over the last year, covering the above criteria to frontline CSC staff. Staff have also participated in multi-agency Safeguarding Children Board CSE training. CSE is included in all safeguarding programmes at a high level. The programmes include Child Protection, Safeguarding and Child Protection Decision Making.</p> <p>We are currently developing a missing children programme to be delivered from April 2016</p> <p>Also training has been made available to CSC staff via online training and via the BSCB which commissioned Barnados to deliver that training.</p> <p>Staff who are working with Children and Young People in the Place Directorate access CSE training through the BSCB website.</p>				

No.	Recommendation	Responsibility	Original Date For Completion	Cabinet Member's Assessment
R05	<p>That:</p> <p>a) BSCB continues to provide and promote training to its partners including health organisations in the city, the West Midlands Fire Service and West Midlands Police;</p> <p>b) Partner organisations include CSE training within Level 1 and Level 2</p>	Chair Birmingham Safeguarding Children Board	July 2015	1 – Achieved (Fully)

⁴ www.rotherham.gov.uk/downloads/file/1407/independent_inquiry_cse_in_rotherham

	safeguarding training.			
Evidence of Progress (and Anticipated Completion Date if 'Not Achieved')				
<p>The BSCB is responsible for ensuring multi-agency training talks place as well as monitoring the effectiveness of single agency training. It does not have to undertake or provide training itself but can choose to do so. As CSE is a key element of the Board's "Safe systems" priority the Board has undertaken a lot of work to better ensure the significant numbers of staff in the city who have contact with children and young people are sufficiently well informed to know what to do if concerned. Appendix 1 provides a full update.</p> <p>The Board commissions one course for front line practitioners which is available to all agencies. It has also developed clear guidance for all agencies as to what they should be providing for their staff from induction onwards. In addition the Board has supported and funded the development and distribution of "BAIT" which is a training course suitable for secondary schools based on a DVD developed and acted by young people.</p> <p>The degree to which agencies are responding to and delivering on the Board's expectations is monitored through the S175 Annual Self Assessment and Audit in schools, and the Annual S11 Audit across partner agencies. All but 2 of the partner agencies highlighted CSE training as a priority for 2015/16 although the number responding to the training review indicated only 1 was not delivering training and 2 did not respond.</p> <p>Awareness of CSE as an issue for anyone involved with children and young people or in contact with them has improved significantly over the last year. The quality of CSE awareness training and the extent to which staff can access that training is also improving although there is much still to do.</p> <p>All staff within the Place Directorate have undertaken mandatory safeguarding awareness training (level 1) during 2015. This is a competency based training package and all staff are required to complete and achieve the 90% pass rate. This package raises awareness on the signs and indications of CSE and the appropriate reporting mechanisms.</p>				

No.	Recommendation	Responsibility	Original Date For Completion	Cabinet Member's Assessment
R06	That business forums and networks are identified to work with to ensure broader understanding of CSE and to support the roll out of the <i>"Say Something if You See Something"</i> campaign and guidelines with particular a focus on the hospitality industry and taxis in order to increase awareness and reporting.	Cabinet Member for Children Services Chair BSCB	July 2015	2 – Achieved (Late)

Evidence of Progress (and Anticipated Completion Date if 'Not Achieved')				
<p>See Me Hear Me postcards have been distributed to each Hackney carriage and Private Hire Driver and to Private Hire Operators. An article concerning CSE was included in the latest newsletter which was sent to all of the aforementioned licence holders. The article included information about the website. A copy is appended.</p>				

No.	Recommendation	Responsibility	Original Date For Completion	Cabinet Member's Assessment
R07	<p>That:</p> <ul style="list-style-type: none"> CSE awareness features as part of induction training for all new councillors; For all current councillors there is compulsory awareness training on safeguarding including CSE; Regular training updates are also made available. 	Leader	Initial feedback April 2015 and completion Dec 2015	3 – Not Achieved (Progress Made)

Evidence of Progress (and Anticipated Completion Date if 'Not Achieved')				
<p>SHORT TERM – By mid-December</p> <ol style="list-style-type: none"> Relevant reference material will be added to the Member portal and this will be communicated to all Members via the Councillor Bulletin and weekly member communications. This information will also be referenced in subsequent new Member induction programmes. <p>CSE at a glance – NSPCC BCC works closely with NSPCC</p>				

<https://www.nspcc.org.uk/preventing-abuse/child-abuse-and-neglect/child-sexual-exploitation/>
 Child Exploitation and online protection centre – CSE arm of the national crime agency main website
<https://www.ceop.police.uk/>

2. A 'market place' event by BSCB Birmingham Safeguarding Children's Board at January 2016 Council.

MEDIUM TERM – By March 2016

1. We will review (and amend as appropriate) the current one day officer Introduction to CSE programme and make it available to Members. This could be part of a broader programme of Safeguarding learning and development – this is being investigated further
2. We are looking to upload an e-learning module on 'Child Sexual Exploitation' onto the iLearn site on the Learning Centre, People Solutions. The objectives of this e-learning module are to:
 - understand what is meant by CSE;
 - understand how to identify that CSE is taking place;
 - understand how to recognise that a young person is being groomed;
 - understand how the framework is used when assessing for CSE;
 - understand what practitioners and agencies do if a child is a victim of CSE;
 - understand how practitioners can effectively support victims of CSE.
3. The OD and Learning team HR are currently working in partnership with Place Directorate to build an e-learning module entitled Safeguarding Awareness – Children and Adults at risk. There is some content within this on CSE – a definition and the common signs and indicators. The timescale for the module is envisaged to be Spring 2016 and could be reviewed at this point to see if appropriate for Members.

LONGER TERM – during 2016

1. Various councils and public bodies have commissioned an applied theatre production to raise awareness of the issues surrounding CSE entitled 'Chelsea's Choice' by Alter Ego.
 This could be explored in terms of a joined up approach to awareness raising .Analysis of the costs/benefits would initially be required.
<http://www.alteregocreativesolutions.co.uk/chelseas-choice/>
2. BCC has a video learning package produced by BCC and used in schools. This BAIT programme and its relevance for Member development will be explored further as a possible alternative to the above.

B Policies and Procedures				
No.	Recommendation	Responsibility	Original Date For Completion	Cabinet Member's Assessment
R08	<p>That the policies and procedures across the City Council ensure CSE is properly dealt with by:</p> <ol style="list-style-type: none"> a) Adopting and working to the West Midlands Regional CSE protocol; b) Making better use of Care First (the council's system for case management) to record and analyse and share CSE cases ensuring it is dynamic and reports can be pulled out; c) Improving feedback from Children's Social Care referrals. (Feedback is 	Cabinet Member for Children Services	Initial Feedback April 2015 & completion November 2015	To be completed for the 10 th Feb meeting

	<p>meant to be provided in specified timescales which does not always happen);</p> <p>d) Establishing CSE champions in key teams including each of the Safeguarding and Family Support hubs who have more in-depth training (and can cascade training to the team) and can act as advisor to the team;</p> <p>e) Reviewing policies and procedures to ensure that parents are seen as equal partners in dealing with CSE and to consider implementing the relational model developed by PACE;</p> <p>f) Reviewing the council's response to young runaways to ensure it meets the requirements of the new statutory guidance on missing children⁵; and</p> <p>g) Developing and embedding a robust missing strategy with clear accountabilities, reporting to the BSCB and an escalation system that is fully understood and effectively implemented; and to investigate the protocol for information sharing when children are classified as absent by the police; and address missing from school as a significant safeguarding risk.</p>			
--	--	--	--	--

Evidence of Progress (and Anticipated Completion Date if 'Not Achieved')

To be completed

No.	Recommendation	Responsibility	Original Date For Completion	Cabinet Member's Assessment
R09	That the City Council, West Midlands Police and Birmingham Safeguarding Children Board make greater use of licensing to	Chair of Licensing Committee & Chair BSCB	July 2015	To be completed for the 10 th Feb meeting

⁵ www.gov.uk/government/publications/children-who-run-away-or-go-missing-from-home-or-care

	<p>tackle exploitation by:</p> <ul style="list-style-type: none"> a) Strengthening the BSCB's role in supporting agencies including licensing and trading standards and West Midlands Police to use the resources and capacity to best effect; and b) Licensing Committee reviewing the statement of licensing and use of powers to assess if it is possible to be more proactive in achieving the objective of: "the protection of children from harm" [e.g. in use of licensing conditions / provision of training /ensuring a clear process for reporting and developing a whistle blowing process to empower license holders and taxi drivers etc. to be proactive in reporting concerns.] 			
--	--	--	--	--

Evidence of Progress (and Anticipated Completion Date if 'Not Achieved')

To be completed

No.	Recommendation	Responsibility	Original Date For Completion	Cabinet Member's Assessment
R10	<p>That it is demonstrated that this area of work (including children's services, third sector commissioning and other key departments such as Legal Services and Licensing) is adequately resourced including that:</p> <ul style="list-style-type: none"> a) It is mainstream funded not reliant on annual funding agreements and that third sector contracts abide by the compact; b) Commissioning of services specifically for dealing with victims of CSE, in particular, is improved so that they are in place in good time, prior to the beginning of the financial year; c) The level of resource for return interviews, plus the intensive 	Cabinet Member for Children Services; Deputy Leader and Cabinet Member for Commissioning, Contracting and Improvement.	April 2015	To be completed for the 10th Feb meeting

	<p>support required to prevent reoccurrences has been risk assessed;</p> <p>d) A review of the level of administrative support in social work teams and for the CSE Co-ordinators is undertaken to ensure this is not affecting ability to manage caseloads;</p> <p>e) A review of the staffing and caseloads of the multi-agency safeguarding hub (MASH) team is undertaken;</p> <p>f) Partners review how to resource a Child Safeguarding Licensing Officer post/role.</p>			
--	---	--	--	--

Evidence of Progress (and Anticipated Completion Date if 'Not Achieved')

To be completed

No.	Recommendation	Responsibility	Original Date For Completion	Cabinet Member's Assessment
R11	<p>That when the City Council commissions services, safeguarding, including CSE, be built into the service specification and monitoring by:</p> <p>a) Ensuring that any contract which will involve direct working with children and young people, families and homes and transport services includes an appropriate level of requirement around CSE (e.g. information and training, procedures, and active involvement in multi-agency strategy and Family Common Assessment Framework meetings); and</p> <p>b) Providing reassurance that the school nurse contract due to be re-commissioned by Public Health will include these provisions.</p>	Deputy Leader; Cabinet Member for Commissioning, Contracting and Improvement & Cabinet Member for Health and Social Care	April 2015 – Initial Feedback & November 2015 completion	To be completed for the 10th Feb meeting

Evidence of Progress (and Anticipated Completion Date if 'Not Achieved')

To be completed

--

No.	Recommendation	Responsibility	Original Date For Completion	Cabinet Member's Assessment
R12	<p>That in order to manage the specific risks of looked after children:</p> <ul style="list-style-type: none"> a) The corporate parenting strategy is reviewed to ensure it includes proper reference to CSE; b) The Corporate Parenting Board provides clear demonstrable actions that CSE is a priority and that the vulnerability of looked after children to CSE is understood; c) Appropriate risk assessments continue to be carried out when placing children in residential care and that decisions are needs based and not resource based; and d) That there are appropriate policies and procedures (in both internal and external homes) and that staff have the confidence and tools to ensure day to day vigilance and action relating to CSE; and to ensure that these issues are considered in the children's home redesign. 	Cabinet Member Children Services	April 2015 – Initial Feedback and completion November 2015	To be completed for the 10 th Feb meeting

Evidence of Progress (and Anticipated Completion Date if 'Not Achieved')

To be completed

--

No.	Recommendation	Responsibility	Original Date For Completion	Cabinet Member's Assessment
R13	<p>That Legal Services:</p> <ul style="list-style-type: none"> a) Review and assess what can be done to: strengthen the disruption of suspected perpetrators in the Civil Courts; support victims through to prosecution; and increase conviction rates and successful use of warning letters and civil orders, in association with WMP and CPS; and b) Review the powers available to disrupt suspected perpetrators and develop a planning tool for disruption for Birmingham, building on the tool kit developed in Derbyshire. This needs to then be used and embedded in Children's Social Care. 	Deputy Leader	April 2015 – Initial Feedback	To be completed for the 10 th Feb meeting

Evidence of Progress (and Anticipated Completion Date if 'Not Achieved')

To be completed

C Multi-Agency Working				
No.	Recommendation	Responsibility	Original Date For Completion	Cabinet Member's Assessment
R14	<p>That the Chair of Birmingham Safeguarding Children Board:</p> <ul style="list-style-type: none"> a) Takes further steps to embed the CSE strategy and implementation of the action plan by holding partners to account and ensuring they take appropriate action; b) Continues to provide challenge as required to schools following the analysis of the annual section 175 audits; and c) Evaluates the effectiveness of multi-agency working including the Strategic CSE Sub-Group, CMOG, 	Chair of Birmingham Safeguarding Children Board	<p>April 2015</p> <p>July 2015 – Changes sustained</p>	To be completed for the 23 rd March meeting

	Multi-Agency Sexual Exploitation meetings etc. (Not MASH – see Recommendation 16).			
<i>Evidence of Progress (and Anticipated Completion Date if 'Not Achieved')</i>				
To be completed				

No.	Recommendation	Responsibility	Original Date For Completion	Cabinet Member's Assessment
R15	<p>That all Birmingham Safeguarding Children Board partners improve the shared understanding of CSE cases by:</p> <ul style="list-style-type: none"> a) Ensuring there is consistency and all officers and partners are working to the soon to be agreed West Midlands Regional CSE operating protocol; b) Developing systems to ensure sharing information across the region to enable a full multi-agency problem profile can be updated and shared to ensure patterns and associations relating to victims, offenders and locations can be examined; c) Using intelligence and analysis to improve understanding of what tactics and approaches work best; and d) Ensuring those providing intelligence and evidence receive appropriate feedback. 	Regional CSE Co-ordinator & Chair BSCB	April 2015 – Initial Feedback and completion July 2015	To be completed for the 23 rd March meeting

<i>Evidence of Progress (and Anticipated Completion Date if 'Not Achieved')</i>				
To be completed				

--

No.	Recommendation	Responsibility	Original Date For Completion	Cabinet Member's Assessment
R16	That reports be provided on: a) The operation of the MASH: workloads, impacts, lessons learnt, and funding (after 6 and 12 months of operation); b) Membership of and participation within MASH, including the role of health, the third sector and family support workers; and c) Data sharing between the MASH partners.	Cabinet Member Children Services and Chair BSCB	April 2015 & September 2015	To be completed for the 23 rd March meeting

Evidence of Progress (and Anticipated Completion Date if 'Not Achieved')

To be completed

No.	Recommendation	Responsibility	Original Date For Completion	Cabinet Member's Assessment
R17	That after six months of operation (March 2015) there is a review to consider if a dedicated multi-agency child sexual exploitation hub should be developed alongside MASH that could provide end to end (case identification through to prosecution) support and action.	Cabinet Member Children Services and Chair BSCB	April 2015	To be completed for the 23 rd March meeting

Evidence of Progress (and Anticipated Completion Date if 'Not Achieved')

To be completed

--

D	Tracking			
No.	Recommendation	Responsibility	Original Date For Completion	Cabinet Member's Assessment
R18	That the Quartet regularly tracks improvements in this area as it relates to the City Council.	Quartet: [Leader, Cabinet Member for Children Services, Chief Executive and Strategic Director for People]	On-going	To be completed for the 23 rd March meeting
<i>Evidence of Progress (and Anticipated Completion Date if 'Not Achieved')</i>				
To be completed				

D	Tracking			
No.	Recommendation	Responsibility	Original Date For Completion	Cabinet Member's Assessment
R19	That an assessment of progress against the recommendations made in this report be presented to the Education and Vulnerable Children Overview and Scrutiny Committee in March 2015. The Committee will schedule regular progress reports until all agreed recommendations are implemented.	Cabinet Member Children Services	April 2015	To be completed for the 23 rd March meeting
<i>Evidence of Progress (and Anticipated Completion Date if 'Not Achieved')</i>				
To be completed				

Appendix ③: Concluded Recommendations

These recommendations have been tracked previously and concluded. They are presented here for information only.

concluded

No.	Recommendation	Responsibility	Date Concluded by Overview and Scrutiny Committee	Tracking Assessment