

Members are reminded that they must declare all relevant pecuniary and non-pecuniary interests relating to any items of business to be discussed at this meeting

BIRMINGHAM CITY COUNCIL

SCHOOLS, CHILDREN AND FAMILIES OVERVIEW AND SCRUTINY COMMITTEE

WEDNESDAY, 26 APRIL 2017 AT 13:00 HOURS
IN COMMITTEE ROOMS 3 & 4, COUNCIL HOUSE, VICTORIA
SQUARE, BIRMINGHAM, B1 1BB

A G E N D A

1 NOTICE OF RECORDING/WEBCAST

The Chairman to advise/meeting to note that this meeting will be webcast for live or subsequent broadcast via the Council's Internet site (www.birminghamnewsroom.com) and that members of the press/public may record and take photographs except where there are confidential or exempt items.

2 APOLOGIES

To receive any apologies.

3 - 6

3 ACTION NOTES

To confirm the action notes of the meeting held on the 22 March 2017.

7 - 18

4 UPDATE ON CHILDREN MISSING FROM HOME AND CARE (1PM - 1.40PM)

Paul Drover and Clare Bell - West Midlands Police, Alistair Gibbons, Executive Director for Children Services, Debbie Currie, AD Child Protection and Tony Stanley, Chief Social Worker in attendance.

19 - 30

5 UPDATE ON CHILD SEXUAL EXPLOITATION (1.40PM - 2.25PM)

Paul Drover and Claire Bell - West Midlands Police, Alastair Gibbons, Executive Director for Children Services, Debbie Currie, AD Child Protection, Performance & Partnership, Chris Neville, Head of Licensing and Colin Diamond (TBC), David Bishop (instead of Julie Young) and Jon Needham (TBC).

31 - 40

6 **WORKING WITH THE PREVENT DUTY (2.25PM – 3.05 PM)**

Tony Stanley, Chief Social Worker, Waqar Ahmed, Prevent Manager and Colvin White, Family Support.

41 - 58

7 **YOUNG PEOPLE AND HOUSING (3.15PM – 3.45PM)**

Kalvinder Kohli, Head of Services, Prevention and Complex and Michael Walsh, Service Lead, Commissioning Centre of Excellence.

59 - 62

8 **WORK PROGRAMME (3.45PM - 4.00PM)**

For discussion.

9 **DATES OF FUTURE MEETINGS**

To note the dates of future meetings on the following Wednesdays in the Council House, committee Rooms 3 & 4:-

14 June, 2017
12 July, 2017
13 September, 2017
18 October, 2017
22 November, 2017
6 December, 2017
17 January, 2018
14 February, 2018
21 March, 2018
25 April, 2018

10 **REQUEST(S) FOR CALL IN/COUNCILLOR CALL FOR ACTION/PETITIONS RECEIVED (IF ANY)**

To consider any request for call in/councillor call for action/petitions (if received).

11 **OTHER URGENT BUSINESS**

To consider any items of business by reason of special circumstances (to be specified) that in the opinion of the Chairman are matters of urgency.

12 **AUTHORITY TO CHAIRMAN AND OFFICERS**

Chairman to move:-

'In an urgent situation between meetings, the Chair jointly with the relevant Chief Officer has authority to act on behalf of the Committee'.

BIRMINGHAM CITY COUNCIL

**SCHOOLS, CHILDREN AND FAMILIES OVERVIEW AND
SCRUTINY (O&S) COMMITTEE – PUBLIC MEETING**

**14:00 hours on Wednesday 22 March 2017, Committee Rooms 3 & 4 –
Actions**

Present:

Councillor Susan Barnett [Chair]

Councillors: Matt Bennett, Kate Booth, Barry Bowles [Deputy Chair], Debbie Clancy, Shabrana Hussain, Julie Johnson and Martin Straker Welds.

Other Voting Representatives: Samera Ali, Parent Governor Representative; Evette Clarke, Parent Governor Representative and Sarah Smith, Church of England Diocese

Also Present:

Cllr Brigid Jones, Cabinet Members for Children, Schools and Families

Tim Boyes, Chief Executive, Birmingham Education Partnership (BEP)

Colin Diamond, Interim Executive Director for Education

Seamus Gaynor, Head of Strategic Management

James Killan, Senior Information Officer

Saleem Quazi, Project Lead, DfE

Christine Quinn, West Midlands Regional Schools Commissioner

Tracy Ruddle, Director of Continuous School Improvement, BEP

Amanda Simcox, Research & Policy Officer, Scrutiny Office

Benita Wishart, Overview & Scrutiny Manager, Scrutiny Office

Rob Wye, AD, WM Academies Regional Delivery Group

1. NOTICE OF RECORDING/WEBCAST

The Chairman advised that this meeting would be webcast for live or subsequent broadcast via the Council's Internet site (which could be accessed at "www.birminghamnewsroom.com") and members of the press/public may record and take photographs.

The whole of the meeting would be filmed except where there were confidential or exempt items.

Peter Hay, Strategic Director for People is leaving the City Council and the Committee gave their thanks, in particular for his commitment to scrutiny and to children care, and they wished him well.

2. APOLOGIES

Apologies were submitted on behalf of:

Councillors: Sue Anderson and Chauhdry Rashid.

Richard Potter, Roman Catholic Representative.

3. ACTION NOTES

(See document No 1)

RESOLVED:-

The action notes of the meeting held on the 8 February 2017 were confirmed.

4. WEST MIDLANDS REGIONAL SCHOOLS COMMISSIONER

(See document No 2)

Christine Quinn, West Midlands Regional Schools Commissioner gave the presentation and answered Members questions.

RESOLVED:-

- The Commissioner would provide information on the following points raised:
 - Schools that were 'Requires Improvement' (RI) two (or in the very rare occasions three) times before conversion could get a third or even a fourth RI but as they are 'new' schools when they become an academy this may be 'missed.'
 - The number of academies in Birmingham that were good or outstanding and choose to become an academy.

5. SCHOOL ATTAINMENT STATISTICS FOR SECONDARY AND PRIMARY SCHOOLS

(See documents 3 and 4)

Colin Diamond, Interim Executive Director for Education and James Killan, Senior Information Officer gave the presentation and answered Members questions, together with the Cabinet Member for Children, Families and Schools, Tim Boyes, Chief Executive, BEP and Tracy Ruddle, Director of Continuous School Improvement, BEP.

It was confirmed that the data sets are for those children that live in Birmingham and attend a Birmingham School.

Members requested whether there was a plan for improving the 'here and now' and also a strategy of where we want to be and how we are going to get there which is adjustable.

The BEP are in the process of sharing the Families of Schools for Birmingham - primary schools document. The purpose is to help primary schools see how others with similar intakes serve their pupils. A video is available to watch at:

<https://www.youtube.com/watch?v=PGPFaV0SpVs&t=2s>

RESOLVED:-

- Future reports refer to children in care rather than looked after children.
- Concern was expressed for the stress year 6 and year 11 pupils are under and the committee may wish to pick up pupil wellbeing for 2017/18 work programme.

6. WORK PROGRAMME 2016-17

(See document 5)

The work programme was discussed.

RESOLVED:-

That the work programme was agreed and:

- The 26th April 2017 meeting will be three hours.
- Members need to send questions and comments they wish officers to cover in the 26th April 2017 meeting by 31st March 2017 to the scrutiny office.

7. DATES FOR FUTURE MEETINGS

The dates were noted.

8. OTHER URGENT BUSINESS

Councillor Brigid Jones, Cabinet Member for Children, Families and Schools informed the committee that there had been an attack on Parliament whilst the committee was taking place. A school from Birmingham were there and they were safe and being looked after.

9. AUTHORITY TO CHAIRMAN AND OFFICERS

RESOLVED:-

That in an urgent situation between meetings the Chair, jointly with the relevant Chief Officer, has authority to act on behalf of the Committee.

The meeting ended at 16.20 hours.

Report of:	Cabinet Member for Children, Families and Schools
To:	Schools, Children and Families Overview and Scrutiny Committee
Date:	26 April 2017

Progress Report on Implementation: Children Missing from Home and Care

Inquiry Information

Date approved at City Council: 12 January 2016
Member who led the original inquiry: Councillor Barry Bowles
Lead Officer for the inquiry: Benita Wishart
Date progress last tracked: 12 October 2016

1. In approving this Inquiry the City Council asked me, as the appropriate Cabinet Member for Children, Families and Schools to report on progress towards these recommendations to this Overview and Scrutiny Committee.
2. Details of progress with the remaining recommendations (Recommendation 1) are shown in the presentation for this item.
3. Members are therefore asked to consider progress against the Recommendation 1 and give their view as to whether they agree with the Cabinet Member categorisation on progress.

Appendices

1	Scrutiny Office guidance on the tracking process
2	Recommendations you are tracking today

For more information about this report, please contact

Contact Officer: Tony Stanley
Title: Chief Social Worker Officer
Telephone: 0121 303 2280
E-Mail: tony.stanley@birmingham.gov.uk

Appendix 1: The Tracking Process

In making its assessment, the Committee may wish to consider:

- What progress/ key actions have been made against each recommendation?
- Are these actions pertinent to the measures required in the recommendation?
- Have the actions been undertaken within the time scale allocated?
- Are there any matters in the recommendation where progress is outstanding?
- Is the Committee satisfied that sufficient progress has been made and that the recommendation has been achieved?

Category	Criteria
1: Achieved (Fully)	The evidence provided shows that the recommendation has been fully implemented within the timescale specified.
2: Achieved (Late)	The evidence provided shows that the recommendation has been fully implemented but not within the timescale specified.
3: Not Achieved (Progress Made)	The evidence provided shows that the recommendation has not been fully achieved, but there has been significant progress made towards full achievement. An anticipated date by which the recommendation is expected to become achieved must be advised.
4: Not Achieved (Obstacle)	The evidence provided shows that the recommendation has not been fully achieved, but all possible action has been taken. Outstanding actions are prevented by obstacles beyond the control of the Council (such as passage of enabling legislation).
5: Not Achieved (Insufficient Progress)	The evidence provided shows that the recommendation has not been fully achieved and there has been insufficient progress made towards full achievement. An anticipated date by which the recommendation is expected to become achieved must be advised.
6: In Progress	It is not appropriate to monitor achievement of the recommendation at this time because the timescale specified has not yet expired.

Appendix 2 : Progress with Recommendations

No.	Recommendation	Responsibility	Original Date For Completion	Cabinet Member's Assessment
R01	The development of an overarching strategy for clarity in responsibilities and risk management, especially for looked after children and persistent runways. There is a need for information to be shared effectively and appropriate support offered.	Cabinet Member for Children, Families and Schools	Feedback to Education and Vulnerable Children O&S Committee • 20 April 2016 • Thereafter until completed	
R02	The Runaways Charter has been signed; and needs to be taken forward to enhance our work with vulnerable children and young people	Cabinet Member for Children, Families and Schools	April 2016	Already concluded – October 2016-

Missing

Overview and Scrutiny 26/4/17

Background

- [Statutory Guidance](#) states that all children (in care or not) should be offered a return home interview within 72 hours.
- Birmingham Council have a contract with the Childrens society to undertake return home interviews.
- Missing Operations Group- MOG provides oversight, historically there has been a cross over between children discussed at COG, need for distinction recognised.
- LOCATE team Police Missing Pilot established in West Midlands provide information on Children Missing and Found in Birmingham and provide notifications from Police System-COMPACT to Childrens services and Childrens society.

Why the need to review

- Ofsted Inspection which identified;
 - Arrangements to link risk with children who go missing is under developed
 - Responses to missing are not informed by sufficient analysis of intelligence and performance information
 - The need to improve the quality and timeliness of services to children who are at risk of CSE or missing
 - Missing children do not always receive or are offered a RHI

Work undertaken in Response to Ofsted

- Developing effective multi agency working with partner agencies
- Co-located team in place to support the above
- Work with commissioned services to improve response in respect of missing children.

Challenges.

- The Children's Society reported difficulties establishing basic details about children which at times lead to delay.
- Information about Missing- Found and Return Home Interviews not consistently being used to inform planning.
- CSE and Missing Co-ordinator role had no evident Missing Focus.
- Lack of consistent oversight of Missing children both in Birmingham and placed out of City

The response so far..

- Daily joint screening with Childrens Society and CSE and Missing Co-ordinator now takes place .
- Revised Missing Guidance emphasises need for good oversight and response to Missing children
- Opportunity for Virtual Triage between CSE and Missing Co-ordinator , Locate Police Team and Childrens social care where there are children- locations – people of concern or interest
- Focus Group established that includes Childrens services CSE Co-ordinator, PSS, Police, CASS, Childrens society and commissioning that will look at future work and oversight.

Summary

- Data set in place for missing children
- Improved partnership working
- Joint chairing of CSE and Missing Strategic Group
- Joint triaging to respond in a timely way
- Review of MOG and remove duplication
- Strategy missing discussions
- Updated Practice Guidance and briefings
- Clear oversight of missing children



[birmingham.gov.uk](https://www.birmingham.gov.uk)

CSE Report

Overview and Scrutiny Committee
26 April 2017

Background -What did Ofsted say.

- Arrangements to link CSE with children who go missing is under developed
- The need to improve the quality and timeliness of services to children who are at risk of CSE or missing
- Some children at risk of CSE have not received a MASE meeting and therefore there is missed opportunities to gather critical intelligence
- Strategic planning to address CSE is weak
- Improve partner agencies multi agency working
 - Co-located team to support multi agency working
 - Work with commissioned services to improve relationships in respect of Children missing from Home and Care.

Immediate responses to CSE

- Process and plans in place to review MASE (Multi agency Sexual exploitation meeting) and effectiveness of response, i.e. 5 and 10 day timescales
- Introduce multi agency mapping on specific children involved in groups of concern
- Identify and implement clear partnership response to MASE and raise awareness of the purpose of the meeting- victim, offender and location
- Introduce single consistent chair for all initial MASES's

Partnership working

- Multi agency representation is from CSE Co-ordinators- Designated Leads Health, Police and Childrens Services. Meetings chaired by Childrens Services
- Notification for Participation if appropriate to Childrens Society, Barnardo's and agencies working with the child
- CSE operational Group (COG) review -terms of reference and membership
- Joint chairing of the CSE and Missing Strategic Group
- Refocus on business as usual and clarity of roles and responsibilities

Current Position

- Revised CSE guidance- Operational from
- Review of COG to reaffirm focus.. Detection, disruption and prosecution.
- Ongoing involvement with the West Midlands Regional CSE Framework
- Regionally currently 70 + live CSE investigations with learning from recent investigations across the region
- Review as to how we promote participation of parents, children and carers within MASE process

Performance Data –Regional data

	<i>Risk Level</i>
267 young people at risk	36 - Serious Risk (14%)
<i>Breakdown:</i>	60 -Significant Risk (22%)
222 - Female (83%)	171 - At Risk (64%)
45 - Male (17%)	0 - subject of assessment
Age range 11-17	

What are we doing together.....

- CSE and work with LADO
- Joint working with the Chaperone service.
- Awareness raising at New Street Station with colleagues from across the region as part of See Me Hear Me Action week
- Health CSE Awareness raising event, local and National profile
- Area work includes;
 - Joint visits to the sexual health clinics, woman's aid and Pregnancy advisory units to support spotting the signs of CSE and referral pathways to CSC.
 - Joint visiting with health to schools and alternative education providers in the local area particular focus on those where CSE is considered to be a concern
 - Training package and roll out of training for school nurses jointly with health practitioners.

What are we doing...

City wide.

- Area facing CSE co-ordinators
- Barnardo's Pilot project for CSE Awareness raising for taxi drivers completed
- Joint training Police and Barnardo's for hotels.
- CSE E learning package available to all Multi agency partners
- LSCB and TLDS CSE Training joint delivered with Barnardo's
- Loudmouth CSE Specific workshops commissioned for schools
- Youth Employment initiative for NEET young people 16-25 often supporting young people known to MASE

Summary

- Appropriate children being discussed in MASE
- MASE meetings taking place in a timely fashion
- Focus of victim, offender, location re-emphasised
- CSE Awareness raising within a wider partnership context across the City
- Practice Guidance and tools updated to increase awareness and improve quality of referrals
- Development of Multi - agency Co- located CSE team to include Duty support
- CSE Childrens services Co-ordinators with an area presence

Licensing

- Safeguarding Training for taxi drivers
 - Report presented to Licensing & Public Protection Committee 12 April 2017
- CCTV in taxis
 - Report presented to Licensing & Public Protection Committee 12 April 2017



[birmingham.gov.uk](https://www.birmingham.gov.uk)

Working with the PREVENT Duty

**Overview and Scrutiny Committee,
26 April 2017**

Waqar Ahmed – PREVENT Lead
Dr Tony Stanley – Chief Social Worker
10 Woodcock Street, Birmingham
6 April 2017

Background and working together

Effective cross-council and interagency partnership

- With Counter Terrorism Unit colleagues
- Working within the safeguarding agenda

Prevent is one component of the UK Counter Terrorism Strategy known as CONTEST which is organised around four work-streams, each comprising a number of key objectives

- *Pursue*: to stop terrorist attacks;
 - *Prevent*: to stop people becoming terrorists or supporting terrorism;
 - *Protect*: to strengthen our protection against a terrorist attack; and
 - *Prepare*: to mitigate the impact of a terrorist attack.
- PREVENT Duty – July 1, 2015
 - Social workers, teachers, nurses...’to proactively help offset extremism or terrorism ‘

Progress in Education

- 100% of schools undertaken Prevent training
- 553 Home Office Accredited Prevent trainers in schools representing 68% of schools
- 170 schools engaged with UNICEF Rights Respecting School Award, impact for 65000 children and young people
- s175 safeguarding audit – schools self assessment on progress
- Secured funding for an additional schools officer

Helping families early

- Partnership of community organisations providing a range of support for vulnerabilities linked to extremism
- A new route to access support, commenced Jan 2017
- Family Support and Social Workers can request support for allocated cases. They remain the Lead worker.
- Includes taking into account a whole family approach, which in turn considers all presenting vulnerabilities
- Awareness raising is ongoing and progressing

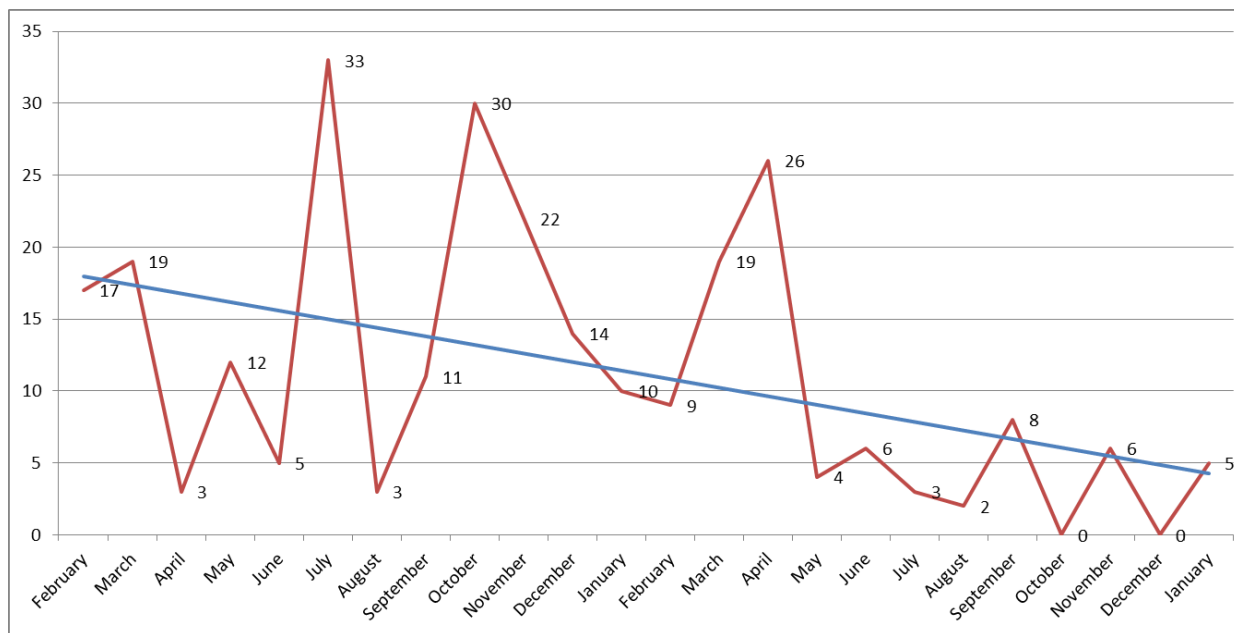
Practice guidance in place

- CSC Prevent Guidance published Jan 2017 providing:
 - Clear Pathway for CSC referrals
 - Screening tool for referrers to complete with Request for Support – aim to clearly articulate the concerns and intelligence
 - Assessment guidance for social workers and family support to enable them to explore and articulate the full range of concerns which may be linked to extremism
 - Clear communication and joint working with Prevent
- We are seeing more detailed and comprehensive assessments

Training and Support

- CSC Prevent Guidance roll out commenced Feb 2017, covering Family Support and Social Work
- WRAP3 Home Office Training will be rolled out to Social Workers from April 2017
- Majority of Family Support have already attended WRAP3 Training, a refresher is taking place in April 2017
- All CSC staff are being directed to complete Home Office Online Training on Prevent
- Working with Learning and Development colleagues to develop a 3 tiered approach to training mirroring RSRT Framework

Decreasing referrals, better quality



← 2015 →

← 2016 →

2017

Summary

- Downward trend in referrals to social care
- Maturity in the wider system
- Multi-Agency channel panel in place
- Decrease in inappropriate referrals to CSC
- More guidance and practice tools to help
- Ongoing engagement with frontline staff
- Safeguarding focus
- Significant harm distinction



Chief Social Work Office

0121 303 3762

tony.stanley@birmingham.gov.uk

Waqar.ahmed@birmingham.gov.uk

Young People and Housing

Our Aspirations and Challenges

Andy Pepper, Assistant Director Children in Care Provider Services
Kalvinder Kohli, Head of Service – Prevention and Complex,
Commissioning Centre of Excellence
Michael Walsh, Head of Service - Intelligence Strategy and Prioritisation ,
Commissioning Centre of Excellence

26 April 2016

Overview

- Our aspirations for young people
- The current picture
- Population profiles
- Homelessness
- Welfare Reform challenges & possible implications
- Positive Pathway Model
- City's response so far
- Delivering our aspirations

Our aspirations for young people

Young people are able to access safe, decent and affordable housing which offers the foundations to achieving a positive transition into adulthood . This in turn supports a young person's wider aspirations and personal goals.

(Developing Positive Pathways to Adulthood DCLG, 2015)

Current Picture - Overview

- Population growing at a faster rate than homes are being built, leading to an increase in overcrowding across all housing tenures
- 20,000 households on the BCC Housing Register (April 2016)
- Shrinking affordable housing sector
- Annually social housing allocations are equivalent to a quarter of Birmingham's overall registered housing need
- Relative to local incomes Birmingham is one of the most expensive places to rent in the country. Housing costs in the city equate to 47% of household income compared to 49% in London
- In the housing market young people face greater economic disadvantage than any other group

2015/16 Snapshot: Young People on Housing Waiting List

- At the end of 2015/16 there were 2262 young people on the BCC housing register equivalent to 11% of all households on waiting list.
- 16-18 years of age totalled 117, consisting of 73 single and couples (requiring 1 bed accommodation) 44 households with dependents (2 bed housing requirement or larger)
- 19-25 years of age totalled 2145, consisting of 694 singles and couples (requiring 1 bed accommodation) 1451 households with dependent (2 bed housing requirement or larger)

Population profiles

- Birmingham is a growing city, home to a population of 1.1m people in 410,000 households (forecast to increase by 100,000 households over the next 20 years)
- The City is super-diverse in terms of ethnicity, nationality and faith. It is one of the youngest cities in Europe with under 25 year olds accounting for 38% of the population; with 15% of the population aged 16 – 24 (Census 2011)

Homelessness: Overall Scale and Extent

There are an estimated 20,000 households in Birmingham each year who are either homeless, at risk of becoming homeless or who are transitioning out of homelessness:-

- Rates of priority (statutory), homelessness are more than 3 times the national average,
- Rates of rough sleeping below national average but numbers are rising rapidly
- temporary accommodation usage increasing (over 1600 households)

Youth homelessness

- In 2015/16, there were 4,118 young people potentially facing homelessness in Birmingham. Young people aged 18 – 21 appear disproportionately affected.
- Needing to leave their family home (42%) was the single biggest reason. Even higher for the 16 – 18 age group (62%)
- In 2015/16, 644 of these young people were or had been in receipt of social care services
- Nationally numbers of young people who are care leavers accepted as statutory homeless has been rising slowly but persistently. Equally an increase nationally in 16/17 year olds becoming looked after
- **Despite these pressures, 87% of young people were prevented from becoming homeless and there were no under 25 year olds in the rough sleeper count in November 2016**

Welfare Reform Challenges

Young people face greatest barriers to accessing housing now....

- Lowest wages/benefit rates
- Least secure employment
- Less money to pay the rent – the ‘Local Housing Allowance’ available in Housing Benefit(HB) or Universal Credit (UC) for private sector tenancies is restricted to the Shared Accommodation Rate (SAR) (£57.34 in Birmingham)



From April 2017:

- 18-21s to lose automatic entitlement to ‘housing costs’ within UC
- Wide range of exemptions mean homeless/at risk young people **should not** be affected BUT awareness, and landlord confidence is a big concern

...and to come from April 2019:

- LHA and SAR (caps on benefit) to be applied to claims for rents in social housing
- LHA one bedroom rate to be applied to supported housing, with a local authority top up fund

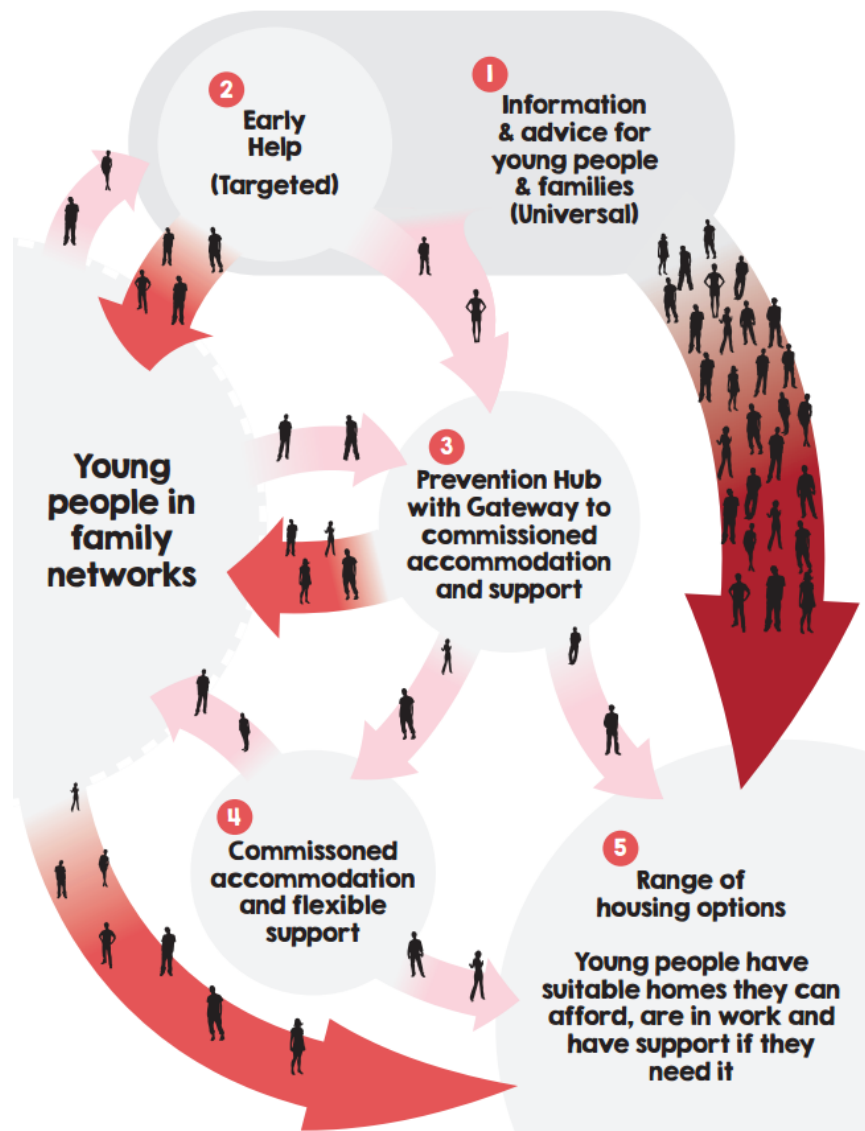
Possible Implications

Continuing decline in landlord confidence

- PRS landlords withdrawing from the 'claimant market'
- Social landlords applying stringent affordability checks to all prospective tenants
- Supported Housing providers believe future revenue funding is increasingly insecure – impact on development & investment
- No affordable options for young homeless people?



Positive Pathway Model



Positive Pathway Framework: The 5 Service Areas

1 Information and advice for young people and families

The Service: Timely, accurate information and advice about housing options available to everyone, delivered in a range of ways including web-based information and through schools to reach young people, families and professionals.

Desired result: Young people and families are empowered to plan transitions to independent living without support from specialist services. They understand the links between housing choice and their financial end employment situation. They know where to get help if they need it.

2 Early help

The Service: Early intervention targeted to reach households where young people are most likely to be at risk of homelessness, in addition to 1). Delivery involving all local services working with young people and families at risk, e.g. Troubled Families programme, Family Support, Youth Support and Youth Offending Services.

Desired result: Young people stay in the family network where possible and safe and are supported to make planned moves if they need to move out.

3 Integrated response ('hub' or 'virtual hub') and gateway to commissioned accommodation and support

The Service: Led by the Housing Authority and Children's Services, an integrated service for young people who are homeless, at risk of homelessness or need help with planned transitions to independence. Housing options and homelessness prevention services come together, often co-located, with other services including support for pathways into learning and work. Underpinned by assessment and including a needs driven gateway into commissioned supported accommodation and flexible housing related support services. Key data collection point to inform ongoing development of the pathway.

Desired results:

- Homelessness is prevented wherever possible, for example by supporting young people to stay in their family network or preventing the loss of a tenancy.
- Young people who need accommodation and/or support get it, including quick access emergency accommodation and immediate and ongoing support where needed.
- Young peoples' accommodation and support underpins rather than disrupts their pathways in learning and work.

4 Commissioned accommodation and support

The service: A range of accommodation and support options designed for younger and more vulnerable young people. Accommodation and support is linked together in some options, for example supported accommodation, Foyers, supported lodgings and Housing First. Flexible outreach support is also available to support young people wherever they live (including in the family home) and stick with them when they move if needed.

Desired results: Young people gain the stability and skills they need, engage with learning and work and move on to greater independence.

5 Range of Housing Options

The service: A range of safe, decent, affordable housing options, shared and self-contained, in the private, social and third sectors. Where the market doesn't provide sufficiently for young people on low incomes the offer will need to be shaped through local housing strategies, using partnerships to create options. May include creative approaches such as partnerships with learning providers and employers to provide dedicated accommodation that underpins participation in learning and work. Access to flexible outreach support (4) in case young people need it.

Desired results: Young people are economically active and have suitable homes that they can afford - they can build for their future.

City's response so far

- Development and implementation of the Positive Pathway for young people led by St Basils with DCLG funded support
- Commitment to end youth homelessness; only local authority to do this
- Nationally recognised, multi-agency Youth Hub
- Information provided through schools
- Birmingham Housing partners have made an offer to government to pilot a 3 year locally commissioned co-investment pathfinder DCLG are currently meeting with the Housing Birmingham partners to explore further

City's response so far

- Member agreement to implement the Care Leavers Accommodation and Support Pathway developed by Barnardos and St Basils
 - Psychologically Informed Environments and Mental Skills Training
 - Continued investment in housing support services for young people funded through the Supporting People programme providing 689 bed-spaces and floating support to approximately 400 young people a year. This includes dedicated bedspaces for YOS and also supported lodgings for UASC
 - Regional commissioning of a Staffordshire framework for 16/17 year olds in care
 - LGA Children's Efficiency Project (reducing high cost care packages)
-

City's response so far

- Commitment from the Cabinet Member for Children, Families and Schools to developing a joint commissioning approach for supported housing between SP and 16/17 year old young people in care supported accommodation in future (Nottinghamshire model)
- Development of innovative and affordable housing models for young people – live and work schemes, young persons housing co operative
- Financial Inclusion Strategy and responses being developed under the proposed additional duties to prevent homelessness
- Training Flats to help prepare young people for the reality of living independently
- Accredited Tenancy Ready Programme (SP services only)

Delivering our aspirations – Where we need to get to

- Expand prevention and early help options through Trailblazer
- Develop a young persons housing policy and affordable housing offer (Housing Birmingham commitment) which meets diverse needs
- Increase local authority communication and engagement to build landlord confidence
- Help young people to prepare to be good tenants (managing finances, behaviour etc.)
- Support young people into apprenticeships/training or employment and career progression
- Develop housing and support options for young people with complex needs building on learning from Fair Chance SIB

Delivering our aspirations – Where we need to get to

- Housing Supply – Mainstreaming innovative models of housing for young people particularly those linking employment and housing together
- Explore the development of young persons community-led housing developments
- A joint approach across council and partner budgets to commissioning accommodation and support options for young people aged 16 +

Any Questions, Comments, Ideas, Solutions?!





Commissioning Centre of Excellence

Contact Information for presentation

Name: kalvinder.kohli@birmingham.gov.uk



Work Programme

Schools, Children and Families O&S Committee

1 Purpose

- 1.1 To aid the discussion on the work of the committee over the last two years and possible work programme items for 2017/18.

2 Work Programmes: 2015/16 & 2016/17

- 2.1 In 2015/16 the committee was the Education and Vulnerable Children O&S Committee. This was altered in 2016/17 to the Schools, Children and Families O&S Committee. The work programme items were as follows:

Work Programme Items	2015/16	2016/17
O&S Inquiry	Missing Children from Home and Care.	Corporate Parenting (included two LGA workshops).
Birmingham Education Partnership (BEP) and School Improvement	✓	✓
Birmingham Safeguarding Children Board (BSCB) Annual Report	✓	✓
Budget Consultation	Committee didn't discuss.	2017+
Cabinet Member for Children's Services in 2015/16 and in 2016/17 the Cabinet Member for Children, Families and Schools	Included: <ul style="list-style-type: none"> Children Social Care and Safeguarding and Education Plans and the LGA Peer Review Findings for the Education and Schools. Strategy and Improvement Plan and Next Steps. Curriculum Entitlement and Equality. Budget position for the portfolio. Early Years Review Consultation and Next Steps. 	Included: <ul style="list-style-type: none"> Improvement and challenges following Ofsted's full inspection. Budget position. Inclusion Commission.
Call-In	Committee didn't receive a request for call in.	Called-In: Proposal to Expand Moor Hall Primary School by Enlargement.
Child Poverty Commission's Update	Committee didn't discuss.	✓
Children in Care	Included corporate parenting and discussions with the District Chairs.	Evidence gathering for the Inquiry and report to City Council.
Children Missing from Education	✓	✓
Children's Social Care Improvement Journey	✓	Included Andrew Christie, Children's Commissioner for Birmingham in



Work Programme

Work Programme Items	2015/16	2016/17
		attendance.
City of Birmingham School (COBS)	✓	Committee didn't discuss.
Early Years Review	✓	Committee set-up a working group for the Early Education and Childcare Offer part.
Education and Schools Strategy and Improvement Plan progress	Included a meeting with Sir Mike Tomlinson, Education Commissioner in attendance.	School improvement was discussed with the Birmingham Education Partnership (BEP).
Elective Home Education (Home Schooled)	✓	Committee didn't discuss.
Female Genital Mutilation (FGM)	Committee didn't discuss.	✓
Inclusion Commission	Committee didn't discuss.	✓
Multi-Agency Safeguarding Hub (MASH)	✓	Included Children's Advice and Support Service (CASS).
Performance Indicators	Committee didn't discuss.	✓
Permanent School Exclusions	✓	Committee didn't discuss.
School Attainment Headline and Detailed Statistics	✓	Included Christine Quinn, West Midlands Regional Schools Commissioner in attendance.
Special Educational Needs (SEN) and Education, Health and Care plans (EHC)	✓	Didn't discuss in committee.
Sufficiency of school places	✓	✓
Tracking Previous Inquiries	<ul style="list-style-type: none"> Work Experience for School Age Children – the role of the City Council Inquiry. Strengthening the Birmingham Family of Schools. Child Sexual Exploitation (CSE). 	<ul style="list-style-type: none"> Children Missing from Home and Care Inquiry. Child Sexual Exploitation (CSE).
Transforming Care in Birmingham for people with Learning Disabilities with or without Autism who display behaviour that challenges	✓	Committee didn't discuss.
Travel Assist (Education Awards Appeals - home to School transport)	✓	✓
Unregistered Schools	✓	Committee didn't discuss.
Visits	Visits from: <ul style="list-style-type: none"> Buckinghamshire County Council's Scrutiny Members 16 Sep 2015. Rotherham Metropolitan Council's Scrutiny Members 25 Nov 2015. 	Visits to: <ul style="list-style-type: none"> Leeds City Council on 2 Aug 2016. Children in Care Council (CiCC) and work experience on 12 Aug 2016. Social Workers: South Area on 22 Jul 16 & 9 Mar 17.



Work Programme Items	2015/16	2016/17
		<ul style="list-style-type: none"> North West Central Area on 21 Feb 2017. East Area on 8 March 2017.
Voluntary Children's Trust	Committee didn't discuss.	✓
Whistle Blowing	✓	Committee didn't discuss.
Working with the Prevent Duty	Committee didn't discuss.	✓
Young People and Housing	Committee didn't discuss.	✓
Youth Justice Strategic Plan	Committee didn't discuss.	2016–17

3 Work Programme 2017/18

2016/17 Priorities

3.1 For the 2016/17 work programme the committee highlighted their priorities at the beginning of the municipal year. These included annual reports and updates and the committee may want these to be potentially included in the 2017/18 work programme:

- Birmingham Safeguarding Children Board (BSCB) Annual Report.
- Portfolio Budget.
- School Attainment.
- School Places Sufficiency.
- Youth Justice Strategic Plan.

Items to be carried over from the 2016/17 Work Programme

3.2 The following were in the 2016/17 work programme to be carried over to the next municipal year:

- Lorna Fitzjohn, Regional Director, West Midlands, Ofsted to be invited.
- Dave Hill, the new Children's Social Care Commissioner for Birmingham to be invited.
- Cabinet Member updates.
- Children's Trust updates.
- Inclusion Commission updates (to include an update on the Disability Service for Children).
- Child Poverty Commission's update in July 2017 (to include an impact assessment) and thereafter at six monthly intervals.
- Previous Inquiries: the Child Sexual Exploitation (CSE) and Missing from Home and Care Inquiries are being discussed today and further updates may be required in 2017/18.
- The Corporate Parenting Inquiry went to City Council in April 2017 and an update on progress with the recommendations is due in October 2017.



Work Programme

- 3.3 In addition, concern was expressed for the stress year 6 and year 11 pupils are under and it was proposed that the committee may wish to pick up pupil wellbeing for the 2017/18 work programme.

Working Groups

- 3.4 The committee setup a working group for the Early Education and Childcare Offer. The working group commented on the draft report from the SEND Focus Group: Early Years Support for Children with SEND to the Inclusion Commission. The final report was circulated to the committee. Members may wish to continue with this working group.
- 3.5 The committee expressed an interest in setting up a working group for 'Missing Education and Permanent School exclusions'. Members may wish to consider setting up this working group in 2017/18.

Other Items

- 3.6 Each O&S Committee held a meeting to discuss the budget consultation in 2017. The Corporate Resources and Governance O&S Committee is exploring ways O&S can be better involved in the 2018+ budget cycle and this will affect how the 2018+ budget consultation is dealt with at O&S committees.
- 3.7 Committee Members may have other items they wish to have potentially included in the 2017/18 work programme, for instance, 'Young People and Housing' is being discussed today and this may be a piece of work for consideration in 2017/18.

4 Next Steps

- 4.1 It is proposed that a draft work programme for the new committee is discussed in June taking into account today's discussion, as it will be for the new committee to agree priorities for their work programme.
- 4.2 Provisional committee meeting dates for the 2017/18 municipal year are for 2pm in committee rooms 3 & 4 on:

14 June 2017	6 December 2017
12 July 2017	17 January 2018
13 September 2017	14 February 2018
18 October 2017	21 March 2018
22 November 2017	25 April 2018

Contact Officers: Benita Wishart, Scrutiny Manager, Benita.wishart@birmingham.gov.uk & Amanda Simcox, Research & Policy Officer, Amanda.j.simcox@birmingham.gov.uk – 0121 675 8444