

Accelerated Progress Plan - Stocktake

Overview and Scrutiny



BE BOLD BE BIRMINGHAM



BIRMINGHAM
CHILDREN'S TRUST



Our vision....

Birmingham Children Thrive

All children and young people are Safe,
Healthy, Included, Confident and
Achieving

They are supported by a Children's Services
Directorate that has strong governance and
management, engaged staff, clear strategy

and

Partnership organisations across the city that work
together as one system putting children and families
at the heart of everything they do



Birmingham Children Thrive



Safe



Achieving



Included



Confident

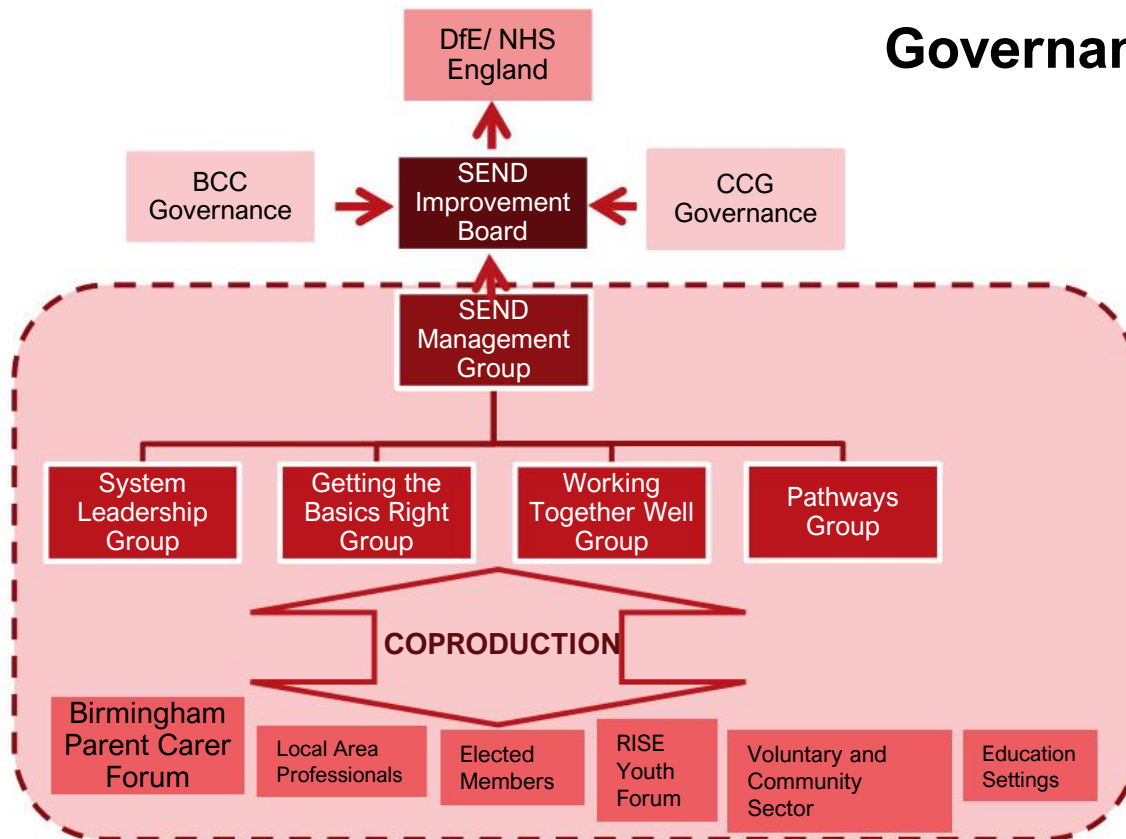


Healthy

Delivered through our principles:

- Identifying and supporting early, aiming to get it right first time
- Professionals and services that wrap around our children and families
- **Strengths based and relationship based practice** with our children, families, each other and our partners

Governance



Objective	Area of Significant Weakness	Improvement Projects at a glance
1. System Leadership	<ul style="list-style-type: none"> Strategy Inter-agency working Local Offer 	<ul style="list-style-type: none"> Refresh the SEND Strategy Develop a Joint Working Protocol with Standard Operating Procedures across the partnership Develop and Implement a Learning and Development Strategy across the partnership Develop a Workforce Strategy to ensure staff sufficiency across the partnership Improve the Local Offer Website Improve Data Management
2. Getting the basics right – identifying and assessing need	<ul style="list-style-type: none"> Coordination of Assessments Quality of EHCPs Waiting Times 	<ul style="list-style-type: none"> Build a sustainable SENAR service Improve the EHNCA and Annual Review Processes Upgrade the Case Management System Agree a Quality Assurance Framework Improve waiting times for Therapies and Neuro-Developmental Pathways
3. Working Together Well	<ul style="list-style-type: none"> Co-Production Parental Engagement Parental Satisfaction 	<ul style="list-style-type: none"> Develop and implement a co-production and engagement framework and plan Set up a Voluntary Sector Partnership Group Develop and implement a communications strategy Launch Parent Portal as part of the SENAR Case management System Upgrade Agree and sign a Partnership Charter Review and Strengthen the role of SENDIASS
4. Pathways – meeting need and improving outcomes	<ul style="list-style-type: none"> Academic Progress Attendance and Exclusions Employment 	<ul style="list-style-type: none"> Develop an Inclusion Strategy Deliver the Developing Local Provision project Review the Children Out of School Process for CYPs with EHCPs Review the allocation of the HNB 14-19 Review of Employment Pathways for YP with SEND Review of Internal Processes to ensure that CYPs pathways are correctly tracked

BE BOLD BE BIRMINGHAM



BIRMINGHAM
CHILDREN'S TRUST



Objective 1 – Systems' Leadership

- We are in the process for Refreshing our SEND Strategy, with a view of having a final draft version by the end of November 2022, with member/ CCG governance sign-off after that. The Strategy is being co-produced as a partnership piece of work and will link with the Inclusion Strategy, the SEND Sufficiency Strategy and the overarching Children's Plan.
- Joint Working Protocol has been agreed in principle (for EHCNA process) and the local senior leaders from Health, Education/BCC and Social Care/BCT are all committed to working more effectively together.
- A suite of Standard Operating Procedures (SOPs) is being created with some already in place and being used and others needing to evolve before being implemented.
- Agencies are engaged in developing a multi-professional Training Needs Analysis to ensure local (multi-professional) learning and development programmes upskill teams with SEND knowledge.
- Visitors to the SEND Local Offer each month have been consistent at an average of 24,832 (for the past 12 months) against a target of 16,000 (minimum). Only one month (August 2021) was lower than the target at 10,792 and the highest month was October 2021 at 36,991.
- Work has continued with education settings and partners in embedding good practice and crystallising what good looks like. As a result, we now have 31% of children and young people educated in a mainstream environment (2835 children and young people), compared to 26% in May 2021 (2278 children and young people). We acknowledge that this only shows distance travelled rather than impact and SEND sufficiency could also be a contributor.

Objective 2 – Getting the Basics Right

- Recruited 50+ new officers into the SENAR service – increased capacity to complete casework - initial number of service staff was 24 at the time of the last visit.
- Rearranged the SENAR service into 4 area teams – North, East, South & West for reviews and aligned all of the area assessments teams into one team.
- Reviewed and co-produced a new EHCP template and all associated documentation as well as co-producing the process with partners

As a result:

- We met the Statutory Deadlines to issue school phase transfers for EHCPs: 90.91% of Reception placements were confirmed (121 out of 132), 96.55% of Year 2 placements were confirmed (29 out of 30) and 98.82% of Secondary placements were confirmed (677 out of 685); this is compared to 0% in 2021
- We have improved on the 20 week statutory compliance with Education, Health and Care Needs Assessments - **65% of assessments were completed within 20 weeks** in May 2022 (813 out of 1245 new plans) compared to 53% in May 2021 (524 out of 989 new plans) and 65% national average.
- We've been making progress on addressing the Annual Review backlog. The % Annual Reviews actioned within 4 weeks of the meeting was at 0.4% in September 2021(1 out of 239); our latest performance for **May 2022 was 25%** (158 out of 632).
- Also, with more appropriate casework now in place, there has been a reduction in NEETs with EHCPs from 9% in May 2021 (945 young people) to **4% in May 2022** (425 young people).

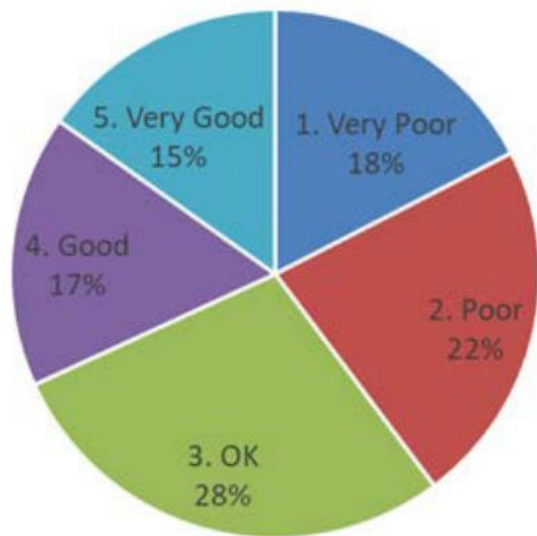
Objective 3 – Working Together Well

- The SEND Local Area Leadership in collaboration with Birmingham Parent Carer Forum (BPCF) are working together to increase parent/carers satisfaction and engagement in SEND services and by 'embedding co-production'.
- All of this has informed the co-drafting of a **Co-Production Framework and Charter** on track to be signed off by the SEND Improvement Board in July 2022, including Parent Carer Forum, active Parents, Carers, Children and Young People. **This agreement is a shared definition, principles, approach and commitment to co-production in Birmingham.**

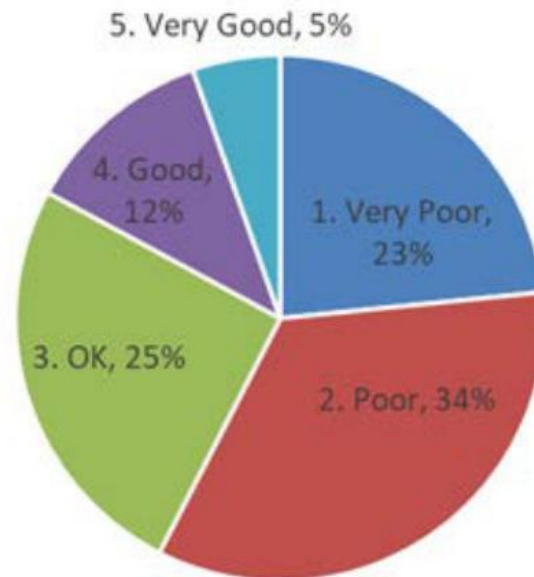
Parent Carer Engagement initiatives have included:

- Engagement undertaken with parents and carers to design the APP
- 8 'Have Your Say' Events for Parents Carers between December 2021 and March 2022. 93 of them attending either online or in person. This has offered great opportunity to gather feedback and to also establish principles of co-production and values.
- A Parent Carer Survey was undertaken in May 2022, which has 788 responses (compared to 378 in 2019 and 226 in 2018, much higher)
- We are also working with Objective 2 to develop a parent portal, so that parents/carers and young people have more sight of the stages within the statutory processes of EHCNAs and Annual Reviews.
- A SEND Youth Participation Strategy group has also been convened involving young people and a Young Persons conference and Survey are being planned for July 2022 to inform this.
- After July 2022, we will be working to embed co-production across the Local Area.

Parent Carer Survey May 2022 – Key Findings (1)

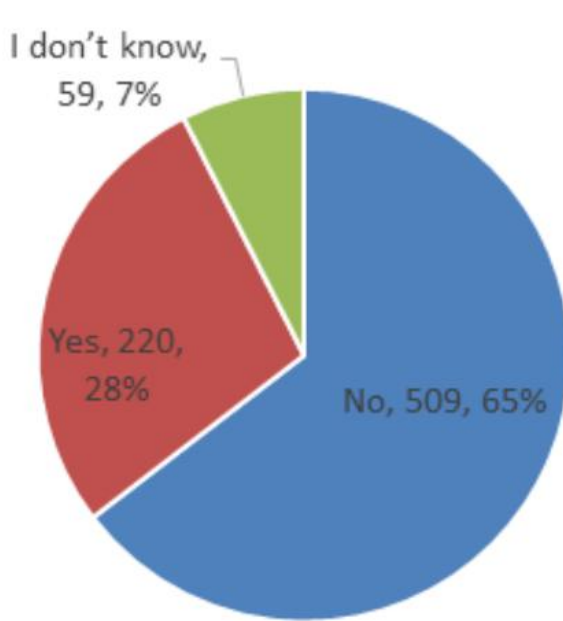


**Overall satisfaction with SEND Services
(all responses)**

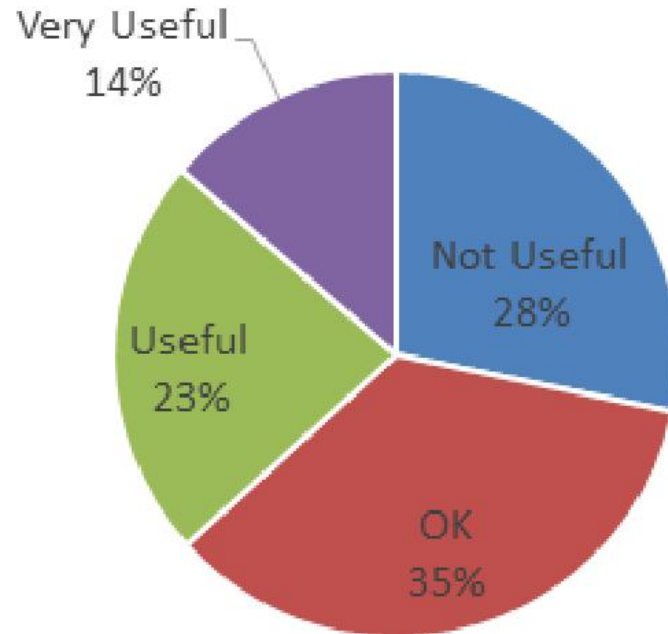


**Overall satisfaction with SEND
Services (multiple services being used
in 2022)**

Parent Carer Survey May 2022 – Key Findings (2)



Have you used the Birmingham SEND Local Offer Website in 2022
(www.localofferbirmingham.co.uk)



How useful has the website been for you in 2022?

Objective 4 – Pathways - Academic Progress

DLP Headlines

- Many Secondary and Primary Projects have evidence of good impact on pupils outcomes e.g. Improvement in attendance, reading ages, reduction in part time tables etc across their locality/partnership of schools
- Secondary DLP Fair Access Project has strong evidence of pupils off-roll returning back to school quickly
- Post-16 Project reporting reduction in year 12 NEET
- High Headteacher engagement and Schools working together to improve provision and develop capacity in their localities
- Consortia & network infrastructure strengthened due to collaborative working
- Additional resources in schools drawing on a range of partners programmes and provision and strong dialogue and discourse around SEND between headteachers and stakeholders
- High interest and energy from schools in many consortia and networks including School led Newsletters, communications and sharing of practice around SEND

Objective 4 – Pathways – Attendance and Exclusions

- We are developing an Inclusion Strategy, with a view to having a final draft version by the end of November 2022, in parallel with the CYP Plan and SEND strategy timeframes.
 - Scope: To set out the partnership's approach to inclusion of all children, to be educated and supported in the appropriate learning environment.
 - The Inclusion Strategy will be co-produced as a partnership piece of work
 - Take into account the recent SEND and AP green paper.
 - Link with the overall vision for Children and Young People's Plan.
 - Development of an Inclusion Strategy to have clear linkages across other strategies including SEND Strategy; focussing on independence supporting the inclusion agenda.
- Review children out of school process for CYPs with EHCPs
 - We are currently establishing a review, defining the cohort, looking at current processes to develop a proposal for improvement by the end of October 2022, ready for implementation by the end of March 2023.
 - Taking into account the new guidance: Working Together to Improve School Attendance.

Summary

We have:

- Put in the required foundations to ensure that sustainable change is in place which will support Birmingham children to thrive
- Built relationships to underpin ongoing improvement

Yet, there is limited impact on the outcomes for children and young people, but as the APP progresses the impact on the outcomes will become more obvious.

We have a lot more to do, but have the right commitment, strategic leadership and delivery plans in place to ensure the steady incremental change needed to deliver a sustainable system that continuously improves.



@BhamCityCouncil



@birminghamcitycouncil



@birminghamcitycouncil



birmingham.gov.uk



BE BOLD BE BIRMINGHAM



BIRMINGHAM
CHILDREN'S TRUST

