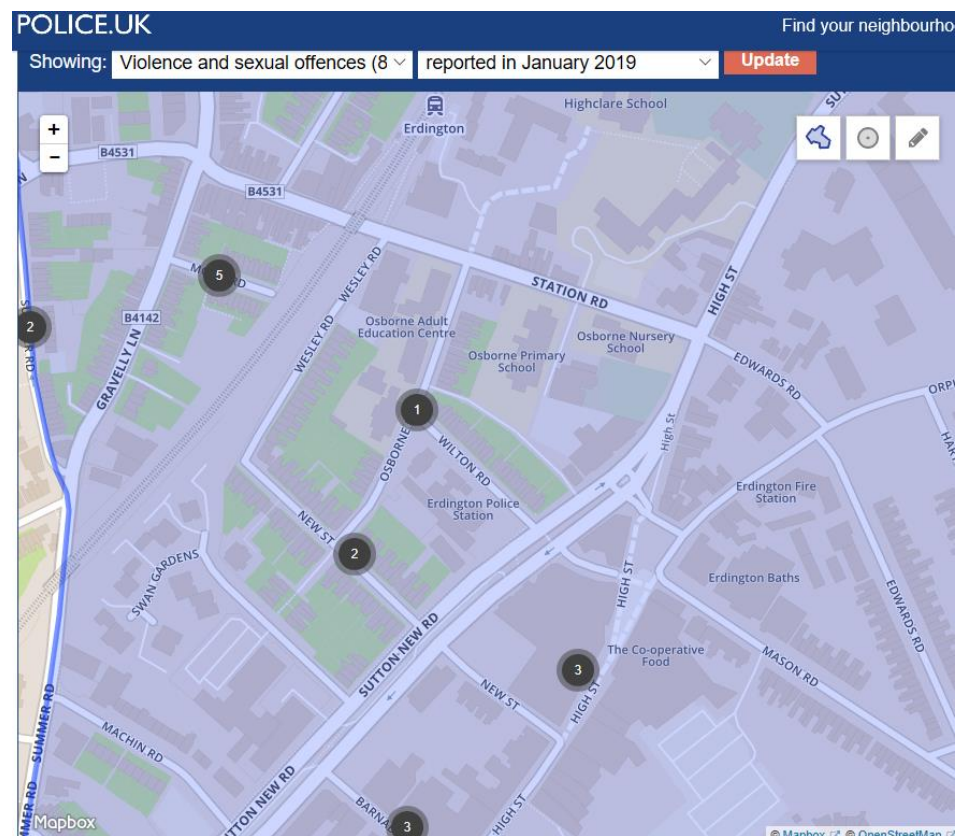
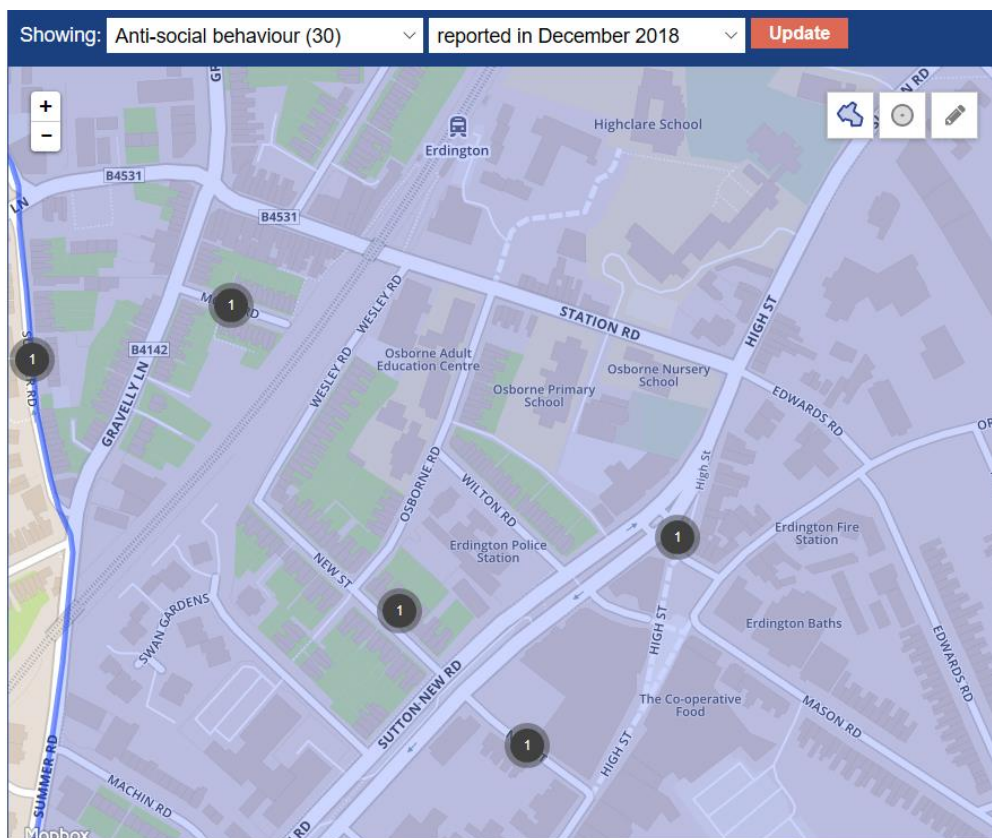
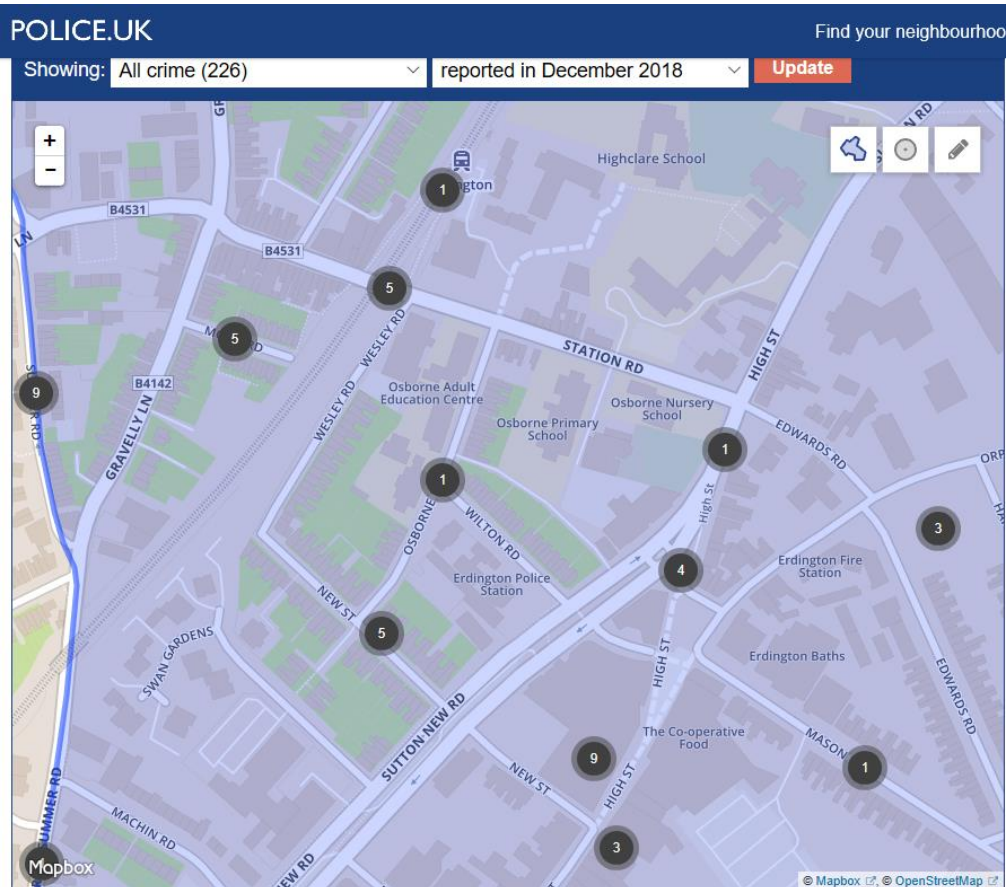


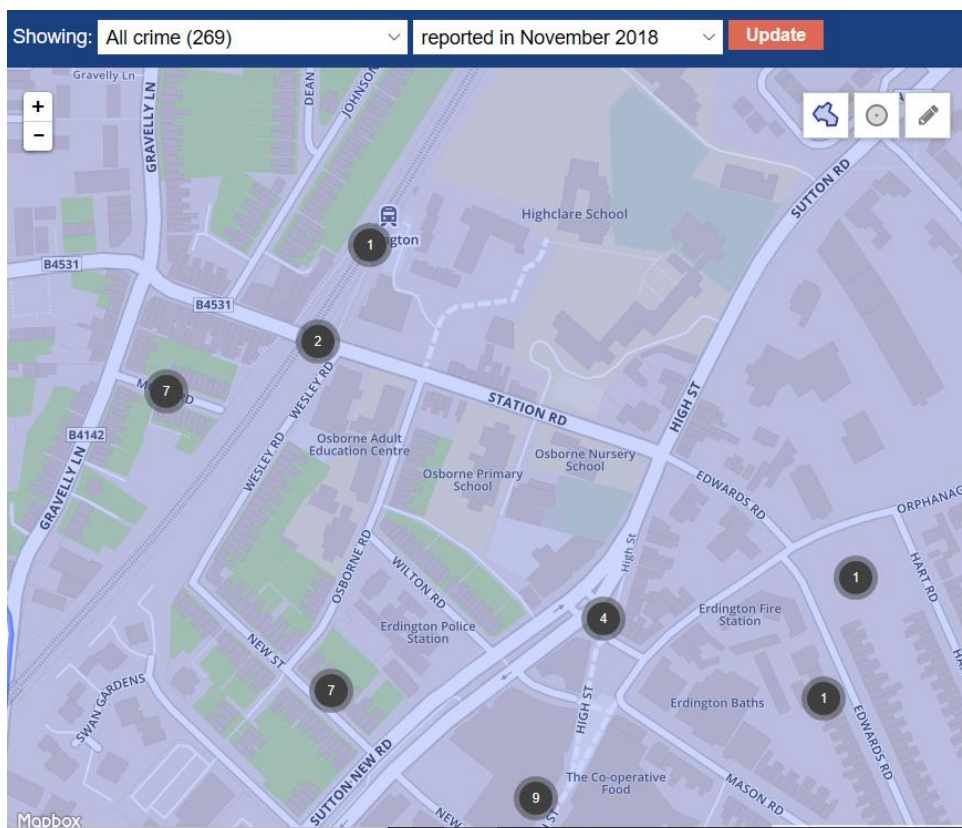
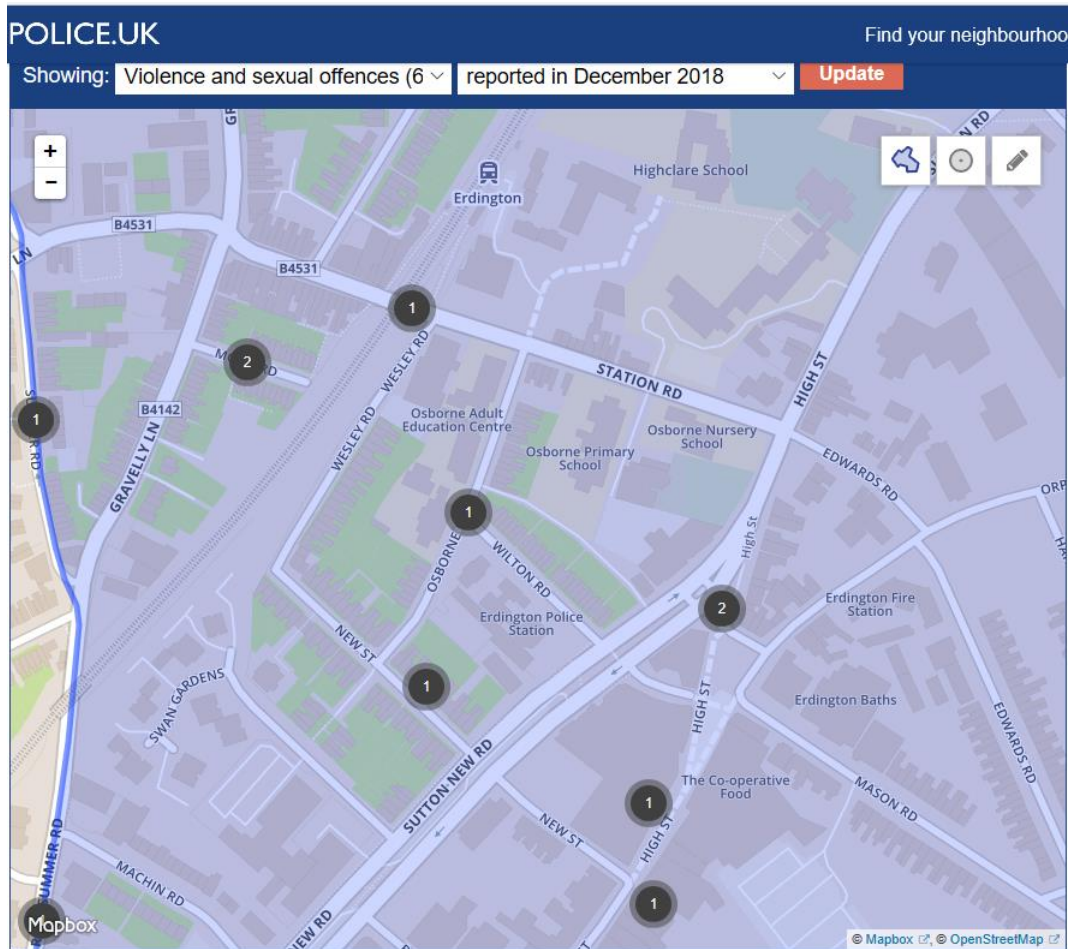
POLICE.UK Find your neighbourhood

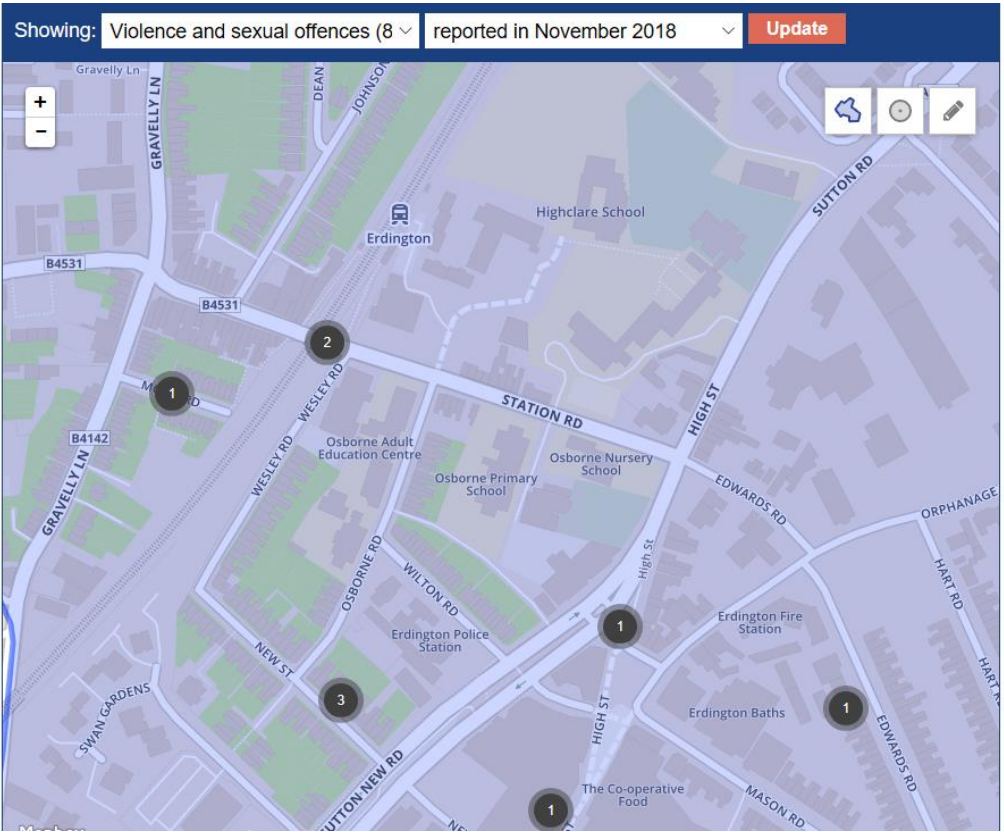
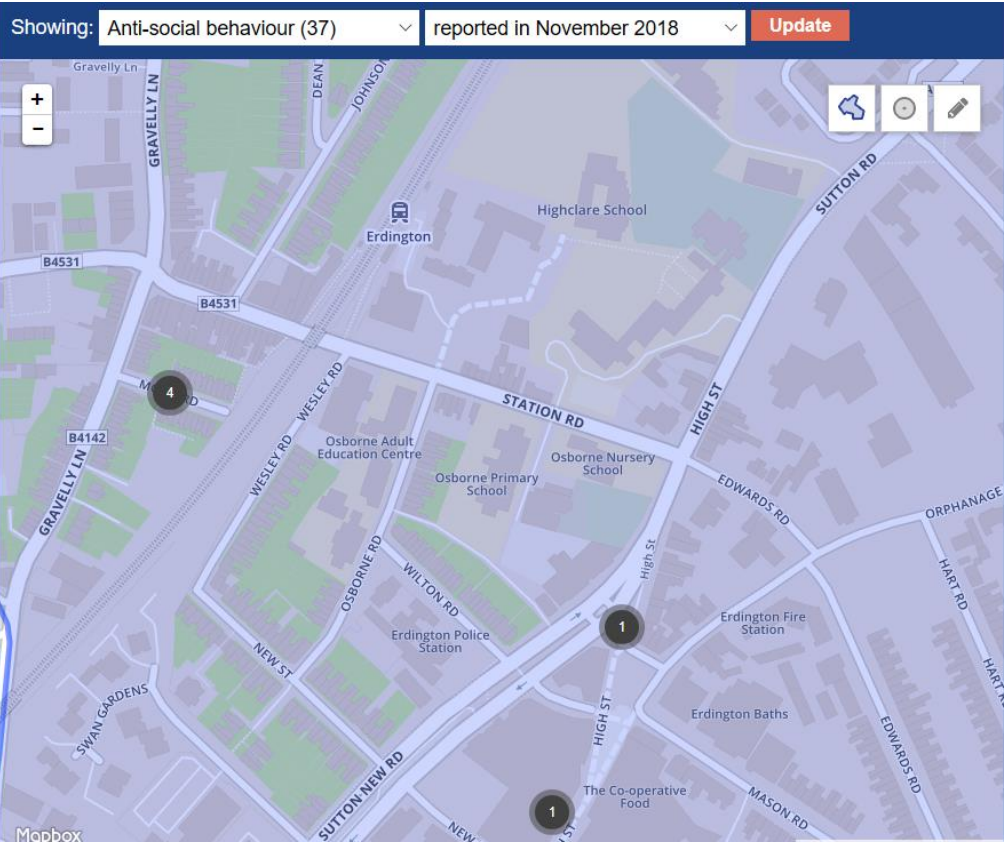
Showing: **All crime (235)** reported in **January 2019** **Update**

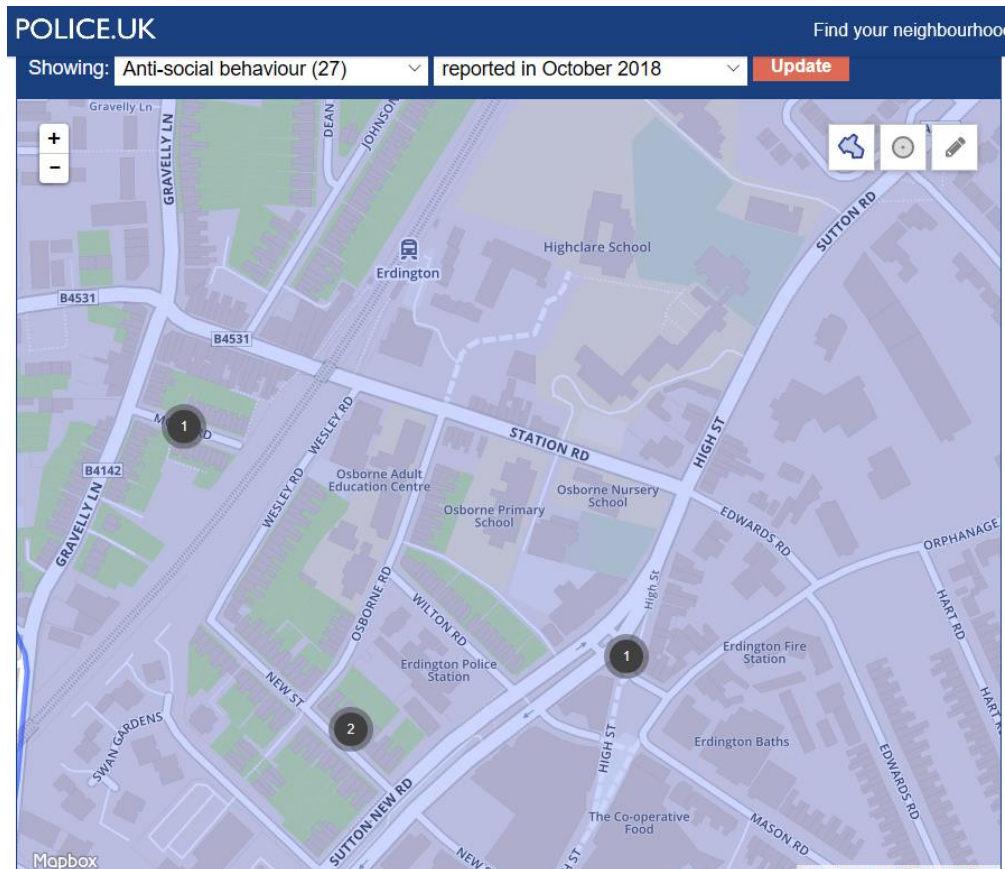
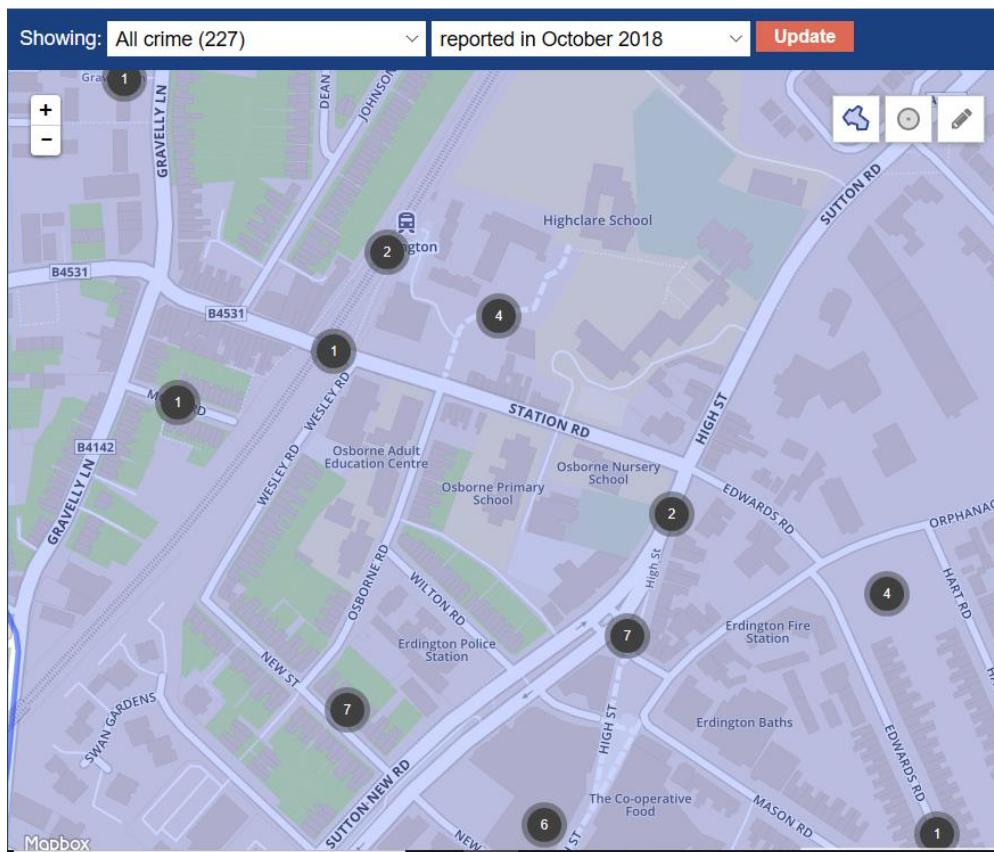
Map showing crime hotspots (numbered 1 through 8) in the Erdington area, including streets like Wesley Rd, Station Rd, High St, and Edwards Rd. Landmarks include Erdington Police Station, Osborne Primary School, and Highclare School.

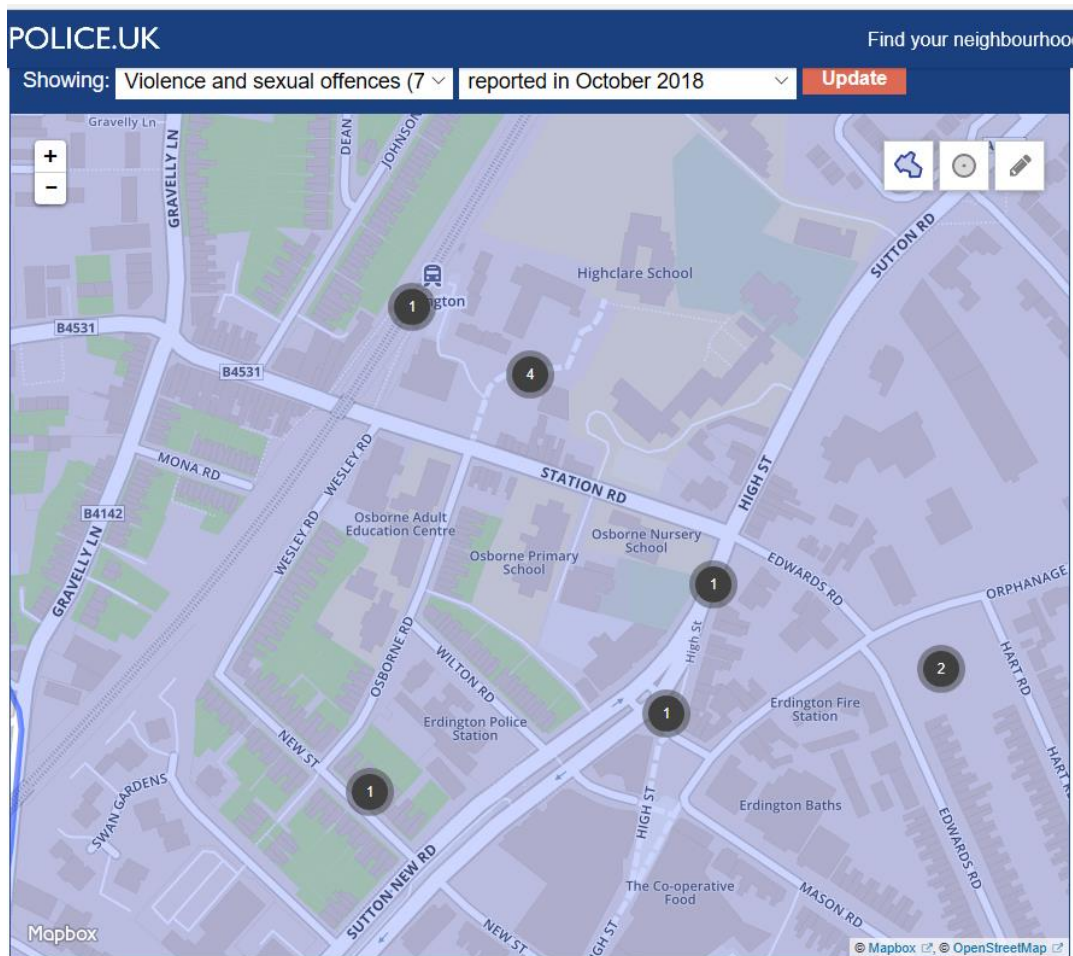












Statistics from Alcohol Concern - <https://alcoholchange.org.uk/alcohol-facts/fact-sheets/alcohol-statistics>

Crime

In 2015/16 in England, victims believed the offender(s) to be under the influence of alcohol in 39% of all violent incidents.

- In 2016/17 in England and Wales, 12.4% of theft offences, 20.6% of criminal damage and 21.5% of hate crimes were alcohol-related [15].
- In England and Wales, alcohol-related violent incidents are more likely to be reported to the police than those which are not alcohol-related [15].

- In 2016/17 in England and Wales, in 35.8% of sexual assault cases the offender was under the influence of alcohol [15].
- In 2015/16 in England, victims believed the offender(s) to be under the influence of alcohol in 39% of all violent incidents, down from a peak of 55% in 2009/10. In Wales, the figure is higher, at 49% in 2015/16, down from a peak of 73% in 2006/07 [11].
- In 2014-2016 in England and Wales, alcohol-related violent incidents made up 67% of violent incidents which take place at the weekend and 68% of those which take place during the evening and night [12].
- In 2014-2016 in England and Wales, 91% of violent incidents which took place in or near a pub or club were alcohol-related, and 67% of those which took place in public spaces were alcohol-related [12].
- In 2016/17 in Scotland, in 42% of violent crime incidents the offender was under the influence of alcohol [20].
- In 2016 in Great Britain, there were 9,040 drink-drive casualties and 6,070 drink-drive accidents. In the long-term, these figures have been falling since 1979 from a peak of around 31,000 casualties and 19,000 accidents, although have increased in recent years since 2013, when there were only 8,270 casualties and 5,690 accidents [13].