



Annual Report for 2014/15 - Key Findings

Birmingham Safeguarding Children Board
26th January 2016

Aims of the session

- Statutory requirement for BSCB Annual Report to be presented to The Health & Wellbeing Board
- Provide and overview of role of the BSCB
- Key findings Annual Report 2014/15
- BSCB strategic priorities for 2016
- Implications for Health & Wellbeing Board

Working Together to Safeguard Children



Working together to safeguard children

A guide to inter-agency working to safeguard and promote the welfare of children

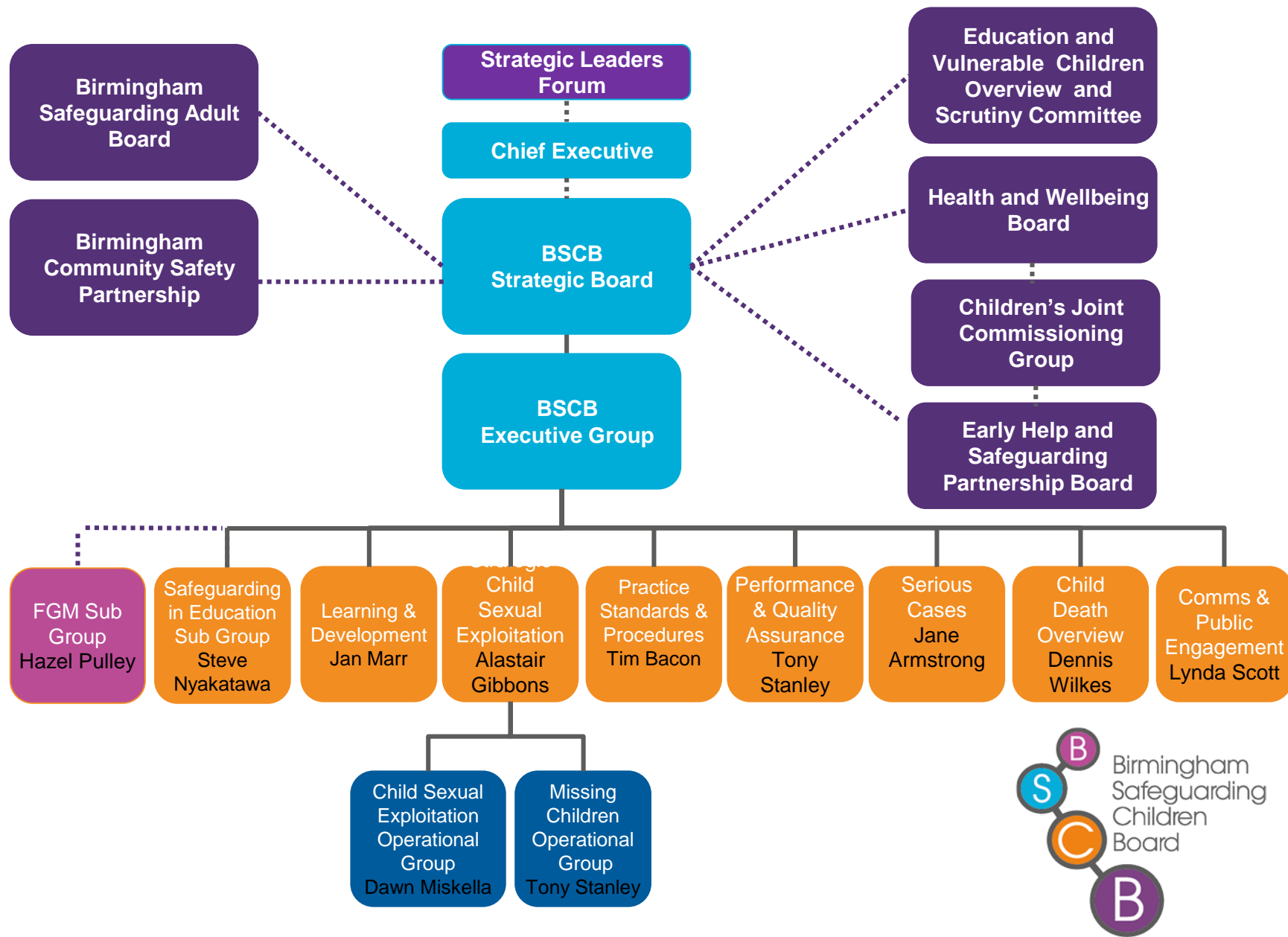
March 2015

Local Safeguarding Children Board statutory functions;

1. Coordination of safeguarding and the promoting the welfare of children in Birmingham; and
2. to ensure the effectiveness of what is done.



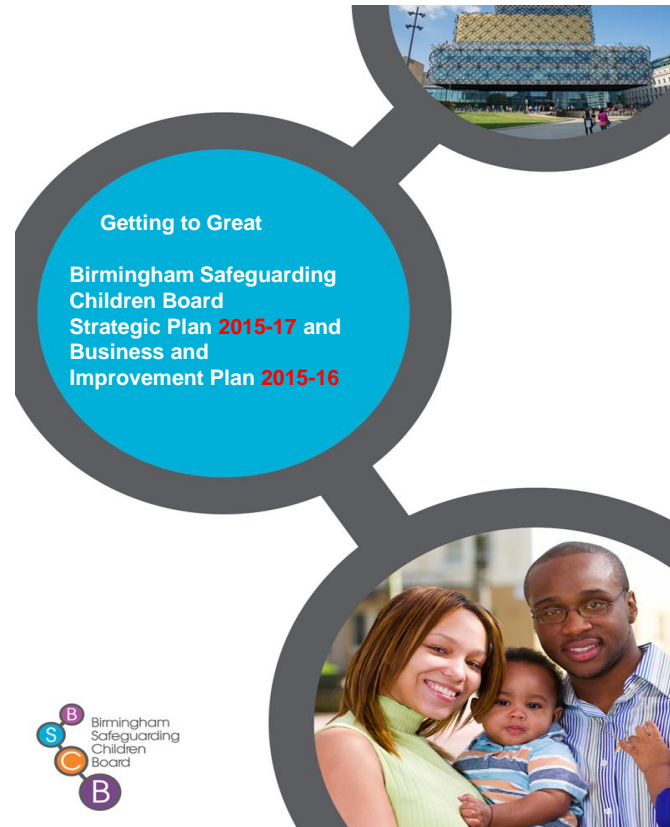
Birmingham Safeguarding Children Board Structure



Strategic Plan 2015-2017 - 'Getting to Great'

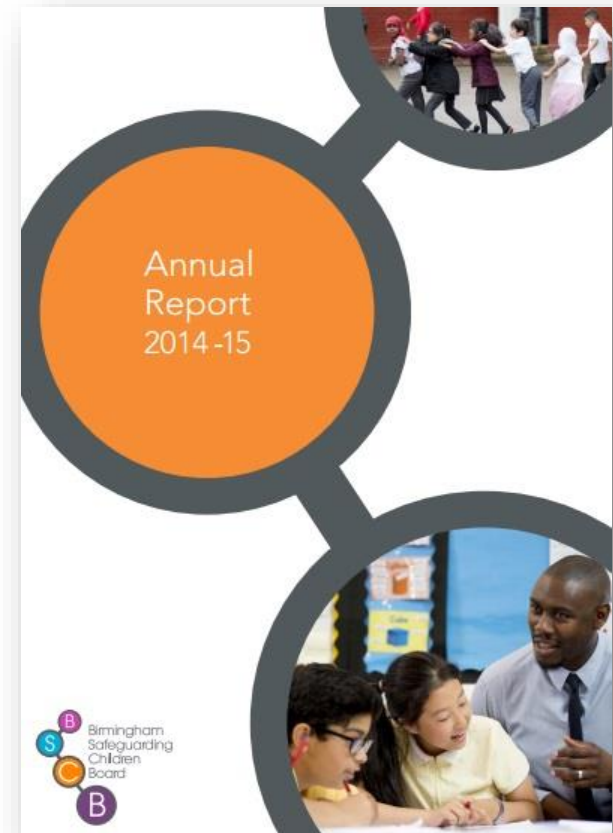
Key priorities:

1. Voice of the Child
2. Early Help
3. Safe Systems
 - CSE
 - LAC
 - Front Door
 - Strengthening Families



Annual Report 2014-15 - Key challenges ahead

- Continue to focus on and improve the delivery of effective practice in relation to the voice of child, early help and safe systems (adding children in care to child protection and court processes)
- Clarify the governance arrangements for and deliver a more coherent strategic approach to CSE ,support the development of an effective operating model and implement the strategy
- Address the gap in relation to missing children
- Strengthen still more our challenge and scrutiny functions and the use of our intelligence to inform partner and single agency priorities for service delivery, practice improvement
- Intensify and extend our multi-agency audit work



Annual Report 2014-15 - Key challenges ahead

- Deliver even stronger accountability and challenge relationships with each agency and use that to inform collective strategic activity
- Facilitate the development of a much better learning culture and reduce unnecessary processes in relation to LLR's and SCR's
- Support and challenge the development of a new partnership landscape between partners and Children's Services and corporately
- Address the question of what a "new" approach to scrutiny, challenge, coordination, performance and quality assurance, learning from practice and from what good practice looks like in order to agree how best to approach these requirements across the system by April 2016



Board's challenges in 2015/16

- Identifying the best way to engage and involve children, young people and families in the work of the board.
- Forging greater strategic links with Community Safety Partnership, Adult Safeguarding Board and **Health and Wellbeing Board**
- Greater drive and joint ownership of safeguarding priorities to reduce 'silo' working.



The Council's challenges in 2015/16

The Council

- Improving children's lived experience in their communities.
- Ensuring the new whole council partnership framework harness multi-agency action to meet children's needs.

Strategic Leadership Forum & Early Help and Safeguarding Partnership

- Re-balancing resources so early help takes precedence over child protection for the majority of children needing support.
- Embedding new ways of working and service delivery as resources reduce, capacity shrinks and demand increases.
- Integrated approach to identifying and responding to children missing from home, care, school and from view
- Tackling Child Sexual Exploitation



Health & Wellbeing Board – Moving forward

- Needs for clear lines of accountability between the Health and Well-being Board, Birmingham Safeguarding Children Board, Community Safety Partnership and the Adult Safeguarding Board.
- A protocol setting out the relationship, leadership and agreed shared priorities and work-streams.
- The aim to clarify and enhance partnership collaboration improve agencies ownership and engagement of the issues, and to share the work across partner agencies more effectively, reducing “silo” working.



Discussion and Questions?

