

Birmingham Homelessness Prevention Strategy: One Year On

Homelessness Week

17th - 23rd June 2019

Kalvinder Kohli, Head of Service, Adult Social Care, Birmingham City Council
Chair of the Homelessness Partnership Board



Challenges: national level (excluding reductions to council budgets)

- **Housing Supply** - Shortage of housing of all sizes, types and tenures in the city with greatest difficulty for those on low incomes requiring affordable housing. Most acute in the private rented sector (PRS) where support for housing costs for people aged under 35 years of age (LHA Shared Accommodation Rate) means less than 7% of available PRS housing can be accessed on housing benefit
- **Demand** - All forms of homelessness has increased since 2010. BCC housing register which is circa 12,500. Lettings in the social rented sector (council and housing association) are exceeded by demand. Increasing numbers of households in Temporary Accommodation both locally and nationally. Increase in Rough Sleeping across the Country
- **Welfare Reform associated hardship** - 2016 Benefit Cap affected 4500 households, Bedroom Tax/SSSC, Disability related benefits & further cuts to continue - By 2021, £37bn less will be spent on working-age social security compared with 2010, despite rising prices and living costs
- **Vulnerable Adults (high needs but below care threshold)** - Substance misuse and mental health, physical health. Increasing vulnerability and complexity of need in the rough sleeper cohort. This is within the backdrop of reductions to health provision nationally.
- **Short term nature of central government funding**

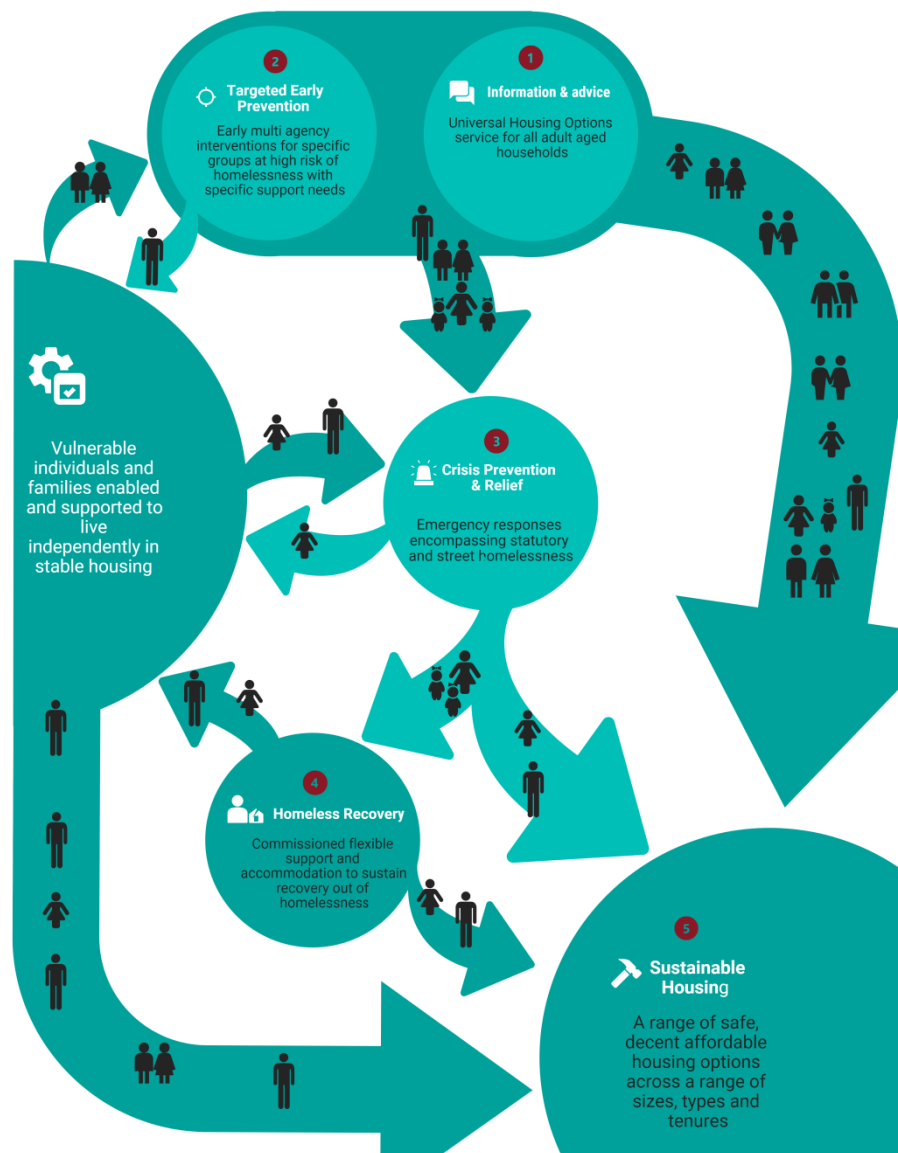
Birmingham Homelessness Prevention Strategy 2017+

- Partners Strategy – No one single agency can resolve the homelessness crisis
- Developed by partners and people with lived experience of homelessness
- Delivery is overseen by the Homelessness Partnership Board

The Homelessness Act 2002 places a legal requirement upon local authorities to carry out a 'review' of all forms of homelessness in their district and publish a homelessness strategy.

- Broadest definitions of homelessness
- To be re - purposed to include an addendum Action Plan for Rough Sleeping.

Homelessness Prevention Strategy 2017+



Targeted Early Prevention

Activity to provide a time critical response to those that do become vulnerable due to precarious housing and personal circumstances including leaving institutional settings, family circumstances, care-leavers, and people experiencing domestic abuse.

Crisis Prevention & Relief

Provision of emergency supported accommodation for vulnerable adults who find themselves in crisis for a short period of time in order to provide a range of support interventions.

Homeless Recovery

Using strength based approaches which promote wider health and wellbeing and outcomes relating to addressing loneliness and isolation, financial inclusion and connections into local community assets in order to regain or maintain independence.

Year One Progress: Action on Rough Sleeping

Enhanced capacity for emergency and severe weather shelter

- Included BCC, housing, voluntary and faith sector into emergency provision that is put in place for extreme and cold weather periods and events.

October 2018 Mobilised Rough Sleeping Initiative - MHCLG £500k

- 52 additional emergency beds for singles, couples (without dependents) including provision for pets
- Physical and mental health, substance misuse support for clients with multiple needs
- Young persons outreach and support service
- Plus dedicated funding for care leavers at risk of rough sleeping to the Children's Trust

December 2018 Mobilised Housing First – MHCLG £ 9.6m regionally

Year One Progress: Voluntary Commitment to Collaborate

Collaborative actions developed to prevent and relieve homelessness in housing, health, social and health sectors:-

- Pathway action plan across the Birmingham Social Housing Partnership to tackle homelessness in Birmingham's housing association sector including eviction prevention panels, resettlement support, advice information and guidance
- Focus on young people under 25s in tenancies by Trident Reach
- Repurposing Barry Jackson Tower, support delivery by Shelter

Improving referral systems across the health and social care system:-

- including access to health support for rough sleepers (mobile prescribing)
 - social and care systems – vulnerable adults team, young people
 - working with criminal justice services to offenders housing pathway
 - health and homelessness action joint action plan developed by the CCG
-

Year One Progress: Promoting quality, prevention and partnership

Bending mainstream services to support homelessness prevention:-

- Birmingham DWP local advice and support services aligned to support vulnerable homeless groups – with advice teams serving rough sleeping, homeless families and domestic abuse client groups.

Integrating approaches to tackling and responding to homelessness:-

- Developing a set of quality standards for commissioning and delivery of homeless services across the city
- Joint BCC action plan developed for tackling Exempt Accommodation

Working with other local authorities and the West Midlands Combined Authority Homelessness Taskforce to:-

- Regional Task Group on Rough Sleeping
- Help deliver and promote Change into Action – regional public information and alternative giving fundraising campaign for responding to rough sleeping

Year One Progress: Adult Social Care Investment 2019-2022

£13M
PER
YEAR

Housing & Wellbeing Hubs – targeted at 7,500 households

Information, advice and guidance on accessing prevention services to complement housing options service. 4 Hubs to be established targeted at groups at risk with support needs (young people, adults singles & couples, domestic abuse, offenders)

Lead worker service for vulnerable homeless support needs groups – approximate capacity for total caseload of 4000 clients

Domestic Abuse, Young People, Adult Singles & Couples, Homeless Families in Temp Accommodation, Offenders

Crisis support and accommodation services

Rough Sleeping Outreach, Refuge, Emergency Accommodation

Recovery and resettlement

Complex Needs Support – Rough Sleeping, Domestic Abuse, Offenders

Year One Progress: Partnerships, Governance and reporting

One of the central aims of the strategy is to promote collective ownership on tackling and preventing homelessness. This is reflected in the governance and oversight arrangements on the delivery of the strategy and the multi-partner approach taken which includes a multi agency & sector Homelessness Partnership Board

Governance and oversight of the strategy undertaken by:-

- Homelessness Partnership Board (monthly)
- Cabinet Member Briefings (monthly)
- Birmingham Health and Wellbeing Board (quarterly)
- Housing Birmingham Partnership (quarterly)

Engagement also takes place with over forums including:-

- City Housing Liaison Board
- City Board
- Birmingham Community Safety Partnership
- Violence Against Women and Children's Board
- Birmingham Homelessness Forum

Influencing national agendas- working with Crisis, MHCLG, ADASS, Social Housing Regulator, LGA, CIH, PHE, DWP, WMCA and other LAs & Regions
