

BIRMINGHAM CITY COUNCIL

EDUCATION, CHILDREN AND YOUNG PEOPLE OVERVIEW AND SCRUTINY COMMITTEE

WEDNESDAY, 14 JUNE 2023 AT 10:00 HOURS
IN COMMITTEE ROOMS 3 & 4, COUNCIL HOUSE, VICTORIA
SQUARE, BIRMINGHAM, B1 1BB

A G E N D A

1 NOTICE OF RECORDING/WEBCAST

The Chair to advise/meeting to note that this meeting will be webcast for live or subsequent broadcast via the Council's Public-I microsite ([please click this link](#)) and that members of the press/public may record and take photographs except where there are confidential or exempt items.

2 APOLOGIES

To receive any apologies.

3 DECLARATIONS OF INTERESTS

Members are reminded they must declare all relevant pecuniary and other registerable interests arising from any business to be discussed at this meeting.

If a disclosable pecuniary interest is declared a Member must not participate in any discussion or vote on the matter and must not remain in the room unless they have been granted a dispensation.

If other registerable interests are declared a Member may speak on the matter only if members of the public are allowed to speak at the meeting but otherwise must not take part in any discussion or vote on the matter and must not remain in the room unless they have been granted a dispensation.

If it is a 'sensitive interest', Members do not have to disclose the nature of the interest, just that they have an interest.

Information on the Local Government Association's Model Councillor Code of Conduct is set out via <http://bit.ly/3WtGQnN>. This includes, at Appendix 1, an interests flowchart which provides a simple guide to declaring interests at meetings.

4 **MEMBERSHIP OF THE EDUCATION, CHILDREN AND YOUNG PEOPLE OVERVIEW AND SCRUTINY COMMITTEE**

To note the resolution of the City Council appointing the Committee, Chair and Members to serve on the Committee for the period ending with the Annual Meeting of the City Council 2024.

Labour (5):-

Councillors Kerry Jenkins (Chair), Shabina Bano, Jilly Bermingham, Des Hughes, and Shehla Moledina.

Conservative (2):-

Councillors Debbie Clancy and Adam Higgs.

Liberal Democrat (1):

Councillor Deborah Harries

5 **ELECTION OF DEPUTY CHAIR**

To elect a Deputy Chair, for the purposes of substitution for the Chair, if absent, for the period ending with the Annual Meeting of the City Council in 2024.

5 - 6

6 **EDUCATION, CHILDREN AND YOUNG PEOPLE OVERVIEW AND SCRUTINY COMMITTEE'S TERMS OF REFERENCE (10.15 - 10.20)**

To note the Terms of Reference for the Education, Children and Young People Overview and Scrutiny Committee.

7 - 16

7 **MINUTES (10.20 - 10.25)**

To confirm the minutes for the Education and Children's Social Care Overview and Scrutiny Committee's public meeting held on 17 May 2023.

17 - 24

8 **ACTION TRACKER**

To review and note the actions from the previous Education and Children's Social Care Overview and Scrutiny Committee.

25 - 30

9 **DELIVERING EFFECTIVE AND FLEXIBLE SCRUTINY (10.30 – 11.00)**

To consider how the Education, Children and Young People Overview and Scrutiny Committee will develop a flexible and effective work programme for 2023/24.

31 - 66

10 **EDUCATION, CHILDREN, AND YOUNG PEOPLE OVERVIEW AND SCRUTINY COMMITTEE SCRUTINY WORK PROGRAMME 2023/24 (11.00 – 11.45)**

To consider the issues for the 2023/24 work programme including Cabinet Member Priorities and forthcoming decisions, issues recommended to be carried forward from 2022/23, information from the City Observatory, Programmes, Performance and Improvement Division, to agree potential issues for the Scrutiny Work Programme and Scrutiny methods; and to appoint members of the Task and Finish Groups for the Child Criminal Exploitation Inquiry and Children and Young People's Mental Health Inquiry.

11 **REQUEST(S) FOR CALL IN/COUNCILLOR CALL FOR ACTION/PETITIONS RECEIVED (IF ANY)**

To consider any request for call in/councillor call for action/petitions (if received).

12 **OTHER URGENT BUSINESS**

To consider any items of business by reason of special circumstances (to be specified) that in the opinion of the Chair are matters of urgency.

13 **SCHEDULE OF MEETING DATES FOR COMMITTEE MEETING AND SCRUTINY WORK**

To note the scheduled dates for 2023/24:

2023

19 July 2023

13 September 2023

18 October 2023

29 November 2023

2024

17 January 2024

28 February 2024

10 April 2024

15 May 2024

14 **AUTHORITY TO CHAIR AND OFFICERS**

Chair to move:-

'In an urgent situation between meetings, the Chair jointly with the relevant Chief Officer has authority to act on behalf of the Committee'.

Birmingham City Council

Education, Children and Young People Overview and Scrutiny Committee

14 June 2023



Subject: Education, Children and Young People Overview and Scrutiny Committee's Terms of Reference

Report of: Christian Scade, Head of Scrutiny and Committee Services

Report author: Fiona Bottrill, Senior Overview and Scrutiny Manager

1 Purpose

- 1.1 To consider the Education, Children and Young People Overview and Scrutiny Committee's Terms of Reference.

2 Recommendations

- 2.1 To note the Terms of Reference for the Children and Young People Overview and Scrutiny Committee as set out in 3.2 below.

3 The Education, Children and Young People Overview and Scrutiny Committee's Terms of Reference

- 3.1 The Terms of Reference below were approved at the Annual General Meeting (AGM) of the Council on 23rd May 2023. This sets out the remit of the work for this committee.
- 3.2 To fulfil the functions of an Overview and Scrutiny Committee as they relate to any policies, services and activities concerning:
- Education and children's social care.
 - The safety and wellbeing of children, including safeguarding with statutory partners.
 - The needs of all children and young people, families and carers (children's services).
 - Oversight of the Children's Trust.
 - Early years health and wellbeing.
 - Looked after children, corporate parenting.

- Special Education Needs and Disability.
- School improvement, school places and travel to and from school.
- Youth engagement and youth services.
- Development of 14-19 career pathways, enterprise and entrepreneurship in Birmingham schools.

3.3 The Overview and Scrutiny Committee dealing with education matters shall include in its membership the following voting representatives:

- a) Church of England diocese representative (one);
- b) Roman Catholic diocese representative (one); and
- c) Parent Governor representatives (two).

4 Any Finance Implications

4.1 No direct financial implications resulting from this report.

5 Any Legal Implications

5.1 No direct legal implications resulting from this report.

6 Any Equalities Implications

6.1 The Council has a Public Sector Equality Duty under the Equality Act (2010) to have due regard to the need to:

- Eliminate discrimination, harassment, victimisation and any other conduct that is prohibited by or under the Act;
- Advance equality of opportunity between persons who share a relevant protected characteristic and persons who do not share it;
- Foster good relations between persons who share a relevant protected characteristic and persons who do not share it.

6.2 The Committee should ensure that it addresses these duties by considering them during work programme development, the scoping of work, evidence gathering and making recommendations. This should include considering: how policy issues impact on different groups within the community, particularly those that share a relevant protected characteristic; whether the impact on particular groups is fair and proportionate; whether there is equality of access to services and fair representation of all groups within Birmingham; whether any positive opportunities to advance equality of opportunity and/or good relations between people are being realised.

7 Appendices

7.1 None.

BIRMINGHAM CITY COUNCIL
EDUCATION AND CHILDREN'S SOCIAL CARE O&S
COMMITTEE – PUBLIC MEETING

**1000 hours on Wednesday, 17 May 2023, Committee Rooms 3 & 4, Council
House, Victoria Square, B1 1BB**

Minutes

Present:

Councillor Kerry Jenkins (Chair)

Councillors: Debbie Clancy, Des Hughes and Shehla Moledina

Other Representatives: Osamugi Ogbe, Parent Governor, Rabia Shami, Parent Governor Representative, and Sarah Smith, Church of England Diocese

Also Present:

Cllr. Julian Pritchard (T&F Group)

Cllr. Paul Tilsley (Deputy Chair of the T&F Group)

Cllr. Karen McCarthy, Cabinet Member for Children, Young People and Families

Damilola Agbato, Service Lead, Partnerships, Insight and Prevention (on-line)

Chris Baggott, Public Health Service Lead

Karl Beese, Commissioning Manager - Adult Public Health

Fiona Bottrill, Senior Overview and Scrutiny Manager

Linda Burnett, Adult Social Care (on-line)

Razia Butt, Director of Children and Families

Andy Couldrick, Chief Executive, Children's Trust

Vanessa Cusack, Senior Commissioning Officer - Public Health, Adults Social Care (on-line)

Helen Ellis, Director of SEND and Inclusion

Adill Hadi, Senior Youth Worker

Emma Haley, Area Manager, Aquarius

Sue Harrison, Strategic Director of Children and Families

Colette Lloyd, Service Manager, Aquarius

Jadieal Millwood, Youth Officer with Strategic Lead for Youth Violence

Amanda Simcox, Scrutiny Officer

Soulla Yiasouma, Head of Youth Service

1. NOTICE OF RECORDING/WEBCAST

The Chair advised that this meeting would be webcast for live or subsequent broadcast via the Council's Public-I microsite and that members of the press/public may record and take photographs except where there were confidential or exempt items.

2. APOLOGIES

Apologies were received on behalf of Cllr. Shabina Bano, Cllr. Jilly Bermingham, Cllr. Simon Morrall and Justine Lomas, Roman Catholic Diocese.

3. DECLARATIONS OF INTERESTS

Members were reminded they must declare all relevant pecuniary and other registerable interests arising from any business to be discussed at this meeting, and none were declared.

4. ACTION NOTES

(See document No. 1)

RESOLVED:

That the action notes of the committee meeting held on 5 April 2023 were agreed.

5. ACTION TRACKER

(See document No. 2)

The Chair advised that there were a few outstanding actions: the SEND Sufficiency Report - and the timeline for when this would be available was requested, the recruitment and retention rates of teachers in the city in comparison to other areas, and confirmation of the number of reduced short break packages.

RESOLVED:

That the action tracker was noted, and the timeline for when the SEND Sufficiency Report would be available to be provided.

6. YOUNG PEOPLE'S SUBSTANCE USE SERVICE (10.05 – 10.45)

(See documents No. 3, 4 & 5)

Karl Beese, Commissioning Manager - Adult Public Health, Chris Baggott, Public Health Service Lead, Emma Haley, Area Manager, Aquarius, and Colette Lloyd, Service Manager, Aquarius, were in attendance for this item.

Also, Linda Burnett, Adult Social Care, Vanessa Cusack, Senior Commissioning Officer - Public Health, Adults Social Care, and Damilola Agbato, Service Lead, Partnerships, Insight and Prevention, were in attendance on-line for this item.

In addition, Members of the Children and Young People's Mental Health Inquiry from the Health and Social Care O&S Committee had been invited for this item and Cllrs. Julian Pritchard and Paul Tilsley were in attendance.

The Chair welcomed the attendees to the meeting, and the first presentation was given by Karl Beese and Chris Baggott, which included an overview of the Young People's Substance Use Service, the additional funding from the Office of Health Inequalities and Disparities (OHID), and future plans – including the Triple Zero City Strategy which was approved by Cabinet on 21 March 2023.

The second presentation was given by Colette Lloyd from Aquarius, and included details of the service, OHID - extended offer, their service model, referral data, multiple complexities and treatment data – with Aquarius looking at the bigger picture, complex needs – including Child Criminal Exploitation (CCE) and mental health need, and their integrated pathways of support - with Aquarius being integral to these other support services, and additional added value – such as the transition hub, family group support, and youth participation, which provided pockets of support.

During the discussion and in response to queries raised by Members, the main points included:

Anti-Social Behaviour (ASB) and young people in unsuitable Housing / Homes in Multiple Occupation (HMOs)

- Colette Lloyd commented that the additional funding from the OHID provided opportunities for Aquarius to go into the community and for the practitioners in their transition team, and their outreach workers, to work alongside the YMCA, Trident and Accord etc. This gets them better connected to neighbourhood community groups, and Aquarius can then identify the problematic behaviours and work alongside the housing providers. Since March and April, they have been targeting particular areas and requested that Members contact them if they were aware of any particular problem areas.

- Chris Baggot highlighted that there was another OHID support grant which was designed to support people with housing issues, and they were planning a lot of training with housing providers. However, they were mindful that this should be used to plug the gaps, rather than duplicate where the housing providers should already be providing the support.

Manchester Met University and the Mental Health Offer in Universities in Birmingham

- Aquarius were currently working in partnership with Manchester Met University on a research project looking at the prevalence of mental health and substance use, to assist in the ways they support young people with mental health. Timelines for this work will be shared with the Committee.
- In relation to what Aquarius were doing regarding problematic substance use in universities in Birmingham; they have joined a partnership with Living Well, who have a social enterprise café situated close to the University of Birmingham (UoB), which was a wellbeing café. It was hoped that they would be able to provide support on substance use alongside Living Well, who provide the mental health support. Also, they will attend freshers' weeks, and they have linked in with Newman University and Aston University via their student wellbeing officers and peer networks, so they will hopefully work with the students.

Unknown Groups

- Chris Baggot highlighted they have a lot of data for those not engaged with adult services and a key part of the delivery of the recent grants, and their drugs and alcohol strategy, was to increase the numbers of those that were engaged. He questioned whether there was enough data and knowledge regarding nitrous oxide use and they were working on this unknown.

Mental Health Provision and Funding

- Karl Beese commented that the enhancements of the OHID has allowed Aquarius to offer a service for people aged 18 – 25. Previously, there had been a drop out of people who should have transitioned from children to adult services, and it was recognised that not all 18 year olds were suitable for this transition. Also, the service model change has allowed them to link in with other key mental health providers.
- Emma Haley highlighted the Harm to Hope Plan and at the time of publication the transition age was of concern, as it made up 6% of the numbers in treatment. In terms of their response, they have a service structure in place to respond to these needs. However, they could also do more if more funding became available.
- Aquarius were always looking at what more they could do if they see an increase or prevalence in young people with mental health being affected by Adverse

Childhood Experiences (ACE), and trauma, and Aquarius provide a trauma informed response. More specialist and comorbid services would be welcomed.

Tracking People Referred to Another Service(s)

- Aquarius has a holistic approach and methodology and assess needs as early as possible. There can be a variety of issues, such as mental health and housing, and they look to support the service user in engaging with other services and continue to hand hold and track them, so they get the support they need.

The Chair thanked them for their attendance and contribution to the two inquiries.

RESOLVED:

That:

- The report was noted.
- The evidence provided was to be used to inform the CCE, and Children and Young People's Mental Health Inquiries.
- Members to contact Aquarius if they are aware of any problem areas in relation to Anti-Social Behaviour (ASB) and young people in unsuitable housing/Homes in Multiple Occupation (HMOs).
- Aquarius to provide the timeline for the Manchester Met University project.

7. YOUTH SERVICE (10.45 – 11.25)

(See document No. 6)

Soulla Yiasouma, Head of Youth Service, Jadieal Millwood, Youth Officer with Strategic Lead for Youth Violence, Adill Hadi, Senior Youth Worker, and Razia Butt, Director of Children and Families, were in attendance to provide evidence to the CCE Inquiry.

The Chair welcomed the attendees to the meeting and Soulla Yiasouma presented the highlights from the report. This included the Youth Service being proactive with the young person, having a curriculum programme regarding CCE, and they have responded to the issue of violence against young women and exploitation.

The Youth Service was about building relationships and working with the young person, and they were in a good place to respond when the young person was exhibiting a change in behaviour. They recognise the Youth Service cannot work alone and they have developed partnerships with the Community Safety Partnership (CSP), Violence Reduction Unit (VRU), and voluntary organisations etc. Therefore, they respond to exploitation in a joined up way, and will walk alongside the young person, and provide encouragement and advocate on their behalf.

The Youth Service offers an early intervention and prevention service, and they were the young person's trusted adult. They have a strength based approach and have meaningful conversations with the young person, and it is the young person who sets the agenda.

Jadieal Millwood highlighted that CCE in Birmingham was increasing, and as a result there were additional vulnerabilities to young people. They have explored additional training for youth workers, so they can be better equipped to help and support the young person. They have targeted interventions and know what other services can be accessed. Also, they use different ways to engage with young people, such as using Virtual Reality (VR).

Youth workers were the trusted adult for the young person, and it was students in year 6 that showed vulnerabilities. The youth workers were aware of what the young people were being exposed to, and they help them to dismantle the ideology, and realise what in reality it means to be part of a gang and exploited, and what the alternatives are.

They provide one to one support for the young person who has been referred into the Youth Service and all Youth Centres have additional staff which means more young people can be supported.

There were avenues of vulnerability for young people, such as social media, and the Youth Service operates a public health approach. Examples of the service were given, including a young lady who was a victim of CCE, whereby the youth worker engaged and built a relationship with her, so the youth worker then became part of the support package and hand-held them in accessing other services. This was about working with the young person to make a decision that they want to make a change.

Adill Hadi has worked in the Youth Service for 22 years and has worked with a number of cohorts of young people and they were well established with these. It was about building resilience, providing a safe space, and providing support without judgement. They have a level of intelligence about the young person that other support services do not have. An example was given where they were supporting the family as well as the young person, who they were better informed about than other services, as they have an established relationship. They provide upskilling and training to colleagues and partners and they were out in the communities.

The Chair commented that it was great to hear first-hand experience, the value of young people wanting to be engaged, and the time it takes to develop relationships, which was usually underestimated and thanked them for the work they were undertaking.

During the discussion and in response to queries raised by Members, the main points included:

- Paragraph 1.3 on page 77 stated 'the service worked with 7,010 individual young people and had 97,245 attendances in 2022/23'. The service was an open access service, and it was about giving skills for those going through childhood to adulthood. They were not a problem solving service, they work with young people.
- There has been an increase in the delivery of single sex provision and the 'Girls Groups' have increased from three groups to nine. They meet regularly once a month with the Police, so they can understand the issues.

- Adill Hadi was working with young men and misogyny, looking at challenging the narrative and negativity towards women.
- The exploitation of young people was on the rise and what more can be done, especially when “families feel at a loss at what to do” was questioned. It was acknowledged that it was difficult to engage with young people and this takes time. A major barrier was information sharing protocols, and the need for all agencies to work together and maximise the investment; the experience also needs to be seen through the young person’s eyes.
- There was a need to build resilience so young people were stronger and can say no to those that want to draw them into criminal exploitation. They need support from schools etc., and the young person being able to access services. Birmingham was in a better place than it was 3-4 years ago, as there were now a lot of support services, and an early help agenda for those at low level risk to prevent them from reaching high thresholds. Young people were victims and an example where a young person asked the Police to put a tag on them so they could not be exploited was given.
- The Cabinet Member highlighted the Independent Advisory Group (IAG) and that the young women’s IAG was also advising the Home Office. At the recent event she attended, Year 7 students and younger students explained difficult issues to the rest of the group they were working with. She will pick up with officers how this information can be joined up to support schools.
- How successful the Youth Service was with working with schools and colleges was queried. They had really good relationships with some schools, but not all schools were engaged. Jadieal Millwood was working with primary schools, as the school offer concentrated on primary schools because there was a task force for secondary schools. Adill Hadi sits on the school police panel meetings.
- Razia Butt highlighted the need to demonstrate the value of social return, and the universal offer, and she will assist with the information sharing issues raised.

The Chair thanked officers for their attendance and hoped to invite them to a future committee meeting.

RESOLVED:

That the report was noted, and the information provided was to be used to inform the CCE Inquiry.

8. SEND ACCELERATED PROGRESS PLAN (11.25 – 12.05)

(See documents No. 7 and No. 8)

Sue Harrison, Strategic Director for Children and Families, and Helen Ellis, Director for SEND and Inclusion, were in attendance for this item.

The Chair welcomed the attendees to the meeting and Helen Ellis gave the presentation and highlighted the context, the four objectives, and what they were doing now - with the focus being on quality assurance.

Sue Harrison stated that it was an accurate reflection on where they were, so much work was going on, and she was pleased with progress, but there was a lot more to do, and they were not complacent. They had now appointed a Head of SENAR which will increase capacity, and further permanent recruitment in SENAR was ongoing.

During the discussion and in response to queries raised by Members, the main points included:

- Cllr. Debbie Clancy requested the spend information for staffing within the SEND and Inclusion Service, as the figures she has for interim staffing for 2021-22 were concerning.
- Cllr. Shehla Moledina questioned how well they knew the children and families they work with and if they collaborate with schools, and other services to address other issues, such as poor housing. Helen Ellis commented that this was about connectivity and having a multi-agency approach, for instance they work with the Children's Trust etc., and more work was being done on this. Sue Harrison reassured the Committee that the Birmingham Children's Partnership, which was a multi-agency partnership, were committing to everybody having a better knowledge of children, young people, and families with SEND. Everyone was asking for more training, but they have not got the capacity to deliver it at the moment, and this is a big aspiration for the partnership.
- Cllr. Des Hughes raised a number of queries and concerns:
 - What was in the DfE stocktakes was queried. It was confirmed that what was presented today was the evidence they had provided to the DfE.
 - Tribunals should be a last resort and were reducing. They were using mediation more and will continue to do this.
 - Whether the support service for families was reducing which impacted on the reducing number of tribunals was queried. The Cabinet Member assured the Committee that the Special Educational Needs and Disability Information Advice and Support Service (SENDIASS) was there for parents that needed support and they will continue to provide this.
 - The quality of the Education and Health Care Plans (EHCPs), and naming schools within these: it was agreed that there were issues around the quality of some of the EHCPs. A multi-agency task group has been convened, which families will be part of, and they will review and

monitor on an on-going basis. This work will include the issues raised regarding the naming of schools in the EHCPs.

- The Accelerated Progress Plan on the Council's website mentions 'requires baseline' for some of the indicators (for instance page 26). Helen Ellis undertook to look into this and report back.
- Due to the agenda overrunning it was agreed that further questions would be submitted in writing to officers, and Sue Harrison highlighted that they were planning further briefings for all Members and dates will be coming out shortly, which will supplement the written response.

RESOLVED:

That:

- The report was noted.
- The following to be provided via e-mail:
 - The spend information for staffing within the SEND and Inclusion Service
 - Information on the indicators in the APP on the Council's website that state, 'requires baseline.'
- The Committee to provide further questions in writing for officers to provide a written response.

9. OFSTED INSPECTION OF BIRMINGHAM CHILDREN'S SERVICES (ILACS)

(See document No. 9)

Andy Couldrick, Chief Executive, Children's Trust, was in attendance for this item and gave a summary of the inspection, which was published on 18 April 2023. He highlighted that the DfE would now reconsider its position on the intervention that was currently in place in light of this, and thanked officers within the Children's Trust.

Also, feedback on the statistics for short break provision, and an update on the recent press article, was provided.

Members recognised the huge achievement and congratulated the Children's Trust.

RESOLVED:

That the Ofsted findings and overall judgement of 'Good' was noted.

10. WORK PROGRAMME

(See document No. 10)

The Chair asked whether Members had any issues they wanted included in the Scrutiny Work Programme for 2023/24. These issues would be added to those previously agreed to be scheduled (pages 152 and 153) and prioritised by Members sitting on the Committee in 2023/24.

The Chair commented that she would want the following added:

- Home to School Transport.
- SENDIASS.
- The review of short breaks (this had been agreed at the last committee meeting).

RESOLVED:

That the Committee reviewed the work programme completed during 2022/23 and recommended the following issues to be included in the Scrutiny Work Programme for 2023/24:

- Home to School Transport.
- SENDIASS.

11. REQUEST(S) FOR CALL IN/COUNCILLOR CALL FOR ACTION/PETITIONS RECEIVED (IF ANY)

None.

12. OTHER URGENT BUSINESS

None.

13. AUTHORITY TO CHAIR AND OFFICERS

RESOLVED:

In an urgent situation between meetings, the Chair jointly with the relevant Chief Officer has authority to act on behalf of the Committee.

The meeting ended at 12.43 hours.

EDUCATION AND CHILDREN'S SOCIAL CARE O&S COMMITTEE
ACTION TRACKER 2022-23

Date	Agenda Item	Action	Update
20 Jul 2022	SEND	The update was noted, and the SEND update at the 7 September 2022 committee meeting will include the contributions and points raised today.	Item discussed at the 7 September 2022 committee meeting.
		The SEND Sufficiency Report to be presented to the Committee when completed.	
		The methodology and full data on EHCP Annual Reviews to be forwarded to the Committee.	Information e-mailed to Members on 26 January 2023.
20 Jul 2022	Home to School Transport	Members agreed that a further update on the service will be provided at the 19 October 2022 committee meeting. The update will include the review of the policy, points made around communication, and the reality of how the service performed in September 2022.	Item included on the agenda for the 19 October 2022 committee meeting.
		Sue Harrison will provide Members with the timescale for the review of the policy by e-mail.	Information e-mailed to Members on 21 February 2023.
20 Jul 2022	Youth Justice Plan	Further information on education and improving employment opportunities will be forwarded.	Information e-mailed to Members on 26 January 2023.
		Officers to send useful information to the Committee during the course of what they are doing.	Ongoing.
20 Jul 2022	Work Programme	Cllr Simon Morrall to forward the e-mail he referred to regarding SENDIASS and the Chair will have discussions with officers outside the committee meeting.	SENDIASS was discussed at the 25 January 2023 committee meeting.
7 Sep 2022	SEND	A meeting with the DfE Commissioner for SEND, Director and Chair to be set up.	Meeting with the DfE Commissioner to take place on 12 October 2022.

EDUCATION AND CHILDREN'S SOCIAL CARE O&S COMMITTEE
ACTION TRACKER 2022-23

Date	Agenda Item	Action	Update
		Timescales for when the Committee can expect the SEND Strategy, SEND Sufficiency Strategy, and an Inclusion Strategy was requested.	The SEND Strategy and the Inclusion Strategy went to Cabinet in March. Awaiting confirmation of Cabinet date for the SEND Sufficiency Strategy.
		Information on how many children are affected by part-time timetables, and figures on children who haven't got a suitable school place, and support that is being provided was requested.	Included in the discussion at the 22 February 2023 committee meeting and actions from this are detailed under the 22 February 2023 committee meeting.
		Reports on the SEND Strategy, SEND Sufficiency Strategy and Inclusion Strategy to be brought to the Committee following approval by Cabinet.	The SEND Strategy and the Inclusion Strategy went to Cabinet in March. Awaiting confirmation of Cabinet date for the SEND Sufficiency Strategy.
7 Sep 2022	Cabinet Member for Children, Young People and Families	The Director to provide the details of when the BEP contract was renewed and the duration of the contract.	Information e-mailed to Members on 21 November 2022
		Tim Boyes, Chief Executive, BEP to be invited to a future meeting.	Tim Boyes attended the 22 February 2023 committee meeting for the attainment summary.
		The structure chart for the Children and Families Directorate to be provided.	Emailed on 10 October 2022 the leadership structure for the Children and Families Directorate & was awaiting what sits below the new AD portfolios. Information was e-mailed on 4 April 2023.
		Details of baselining of services within the Directorate to be shared with the Committee.	Kerry Madden's update presentation to the committee on 4 January 2023 explained that baselining had informed the detail in the Improvement Plan. The summary plan e-

EDUCATION AND CHILDREN'S SOCIAL CARE O&S COMMITTEE
ACTION TRACKER 2022-23

Date	Agenda Item	Action	Update
			mailed to Members on 24 January 2023 also references this. The information on baselining and how it contributed to the Improvement Plan will be incorporated when an update on the Improvement Plan is given at the 5 April 2023 committee meeting.
		Details for the funding bids for three free schools including timescales to be provided.	E-mailed Members the information on the 29 October 2022
		Information on how many excluded primary school children have unmet SEND needs / EHCPS was requested.	Included in the discussion at the 22 February 2023 committee meeting and actions from this are detailed under the 22 February 2023 committee meeting.
		The issues raised regarding the Children's Trust to be highlighted to them before the meeting in November 2022 so these can be covered.	E-mailed the Children's Trust.
		Information on the number of places that Special Schools accept above their Planned Admission Number. Do the plans for future Special School places take into account these numbers in addition to places required to meet the needs of children who are currently not in a Special School?	E-mail sent to Members on the 19 October 2022.
7 Sep 2022	Work Programme	Tim Boyes, Chief Executive, BEP to be invited to a future committee meeting (also agreed at the above item).	Tim Boyes has been invited to attend the 22 February 2022 committee meeting for the attainment summary. Other issues regarding BEP can be raised at this meeting.
		The Chair to meet with the DfE Commissioner and Director to discuss the SENDIASS review.	Meeting with the DfE Commissioner took place on 12 October 2022.

EDUCATION AND CHILDREN'S SOCIAL CARE O&S COMMITTEE
ACTION TRACKER 2022-23

Date	Agenda Item	Action	Update
19 Oct 2022	SEND Commissioner	The Cabinet Member, Children, Young People and Families, to report back on how the Improvement Board fits in with the Council's overall governance and decision making structures.	E-mailed Members the information on 27 February 2023.
		The Strategic Director, Children and Families to bring the Directorate's Improvement Plan to a future committee meeting.	Added to the work programme for 4 January 2023 committee meeting.
		The Commissioner to attend a committee meeting early next year.	The Commissioner attended the 25 January 2023 adjourned committee meeting.
19 Oct 2022	Home to School Transport	Janie Berry, City Solicitor, to share reputational issues and any cases the Committee should be aware of outside the committee meeting.	E-mailed Members the information on 27 April 2023.
		Janie Berry, City Solicitor to be added to the work programme to update Members on tribunals and delays etc., and feedback on how the role of Legal Services contributes and makes risk informed decisions.	Added to the work programme under 'to be scheduled'.
19 Oct 2022	Work Programme	SENDIASS to be an item on the November 2022 committee meeting.	Added as an agenda item.
		The BSCP, and the Children and Young People Plan to be moved to the January 2023 meeting.	Work Programme updated.
		The Commissioner to write to the Chair to explain the concerns of the SENDIASS item in November 2022.	SENDIASS was discussed at the adjourned 25 January 2023 committee meeting.
		Student attendance at school during their period.	Added to the work programme - to be scheduled.
		The Young People's Substance Use Service to be added to the work programme.	Programmed for the 17 May 2023 committee meeting.
30 Nov 2022	Children's Trust	A paper on unregulated placements.	Information e-mailed to Members on 26 January 2023.
		Information on the cost increases if the Early Help offer was not in place.	Information e-mailed to Members on 26 January 2023.

EDUCATION AND CHILDREN'S SOCIAL CARE O&S COMMITTEE
ACTION TRACKER 2022-23

Date	Agenda Item	Action	Update
		Cost of care and general information on the Children's Trust budget and spend.	Information e-mailed to Members on 26 January 2023.
4 Jan 2023	Children and Families Directorate Improvement Plan	Quarterly updates to be provided.	The work programme has been updated and the next update is scheduled for 5 April 2023.
		Update on the Directorate's budget to be provided.	Information e-mailed to Members on 24 January 2023.
		Details and the membership of the Head Teachers Reference Group to be e-mailed.	Details e-mailed to Members on 19 January 2023.
		A directory of the Local Offer to be provided.	Information e-mailed to Members on 8 February 2023.
22 Feb 2023	Action Tracker	The Children and Families Directorate structure chart to be provided (originally requested 7 Sep 2022).	E-mail on 4 April 2023.
		Details of the Children and Families Directorate Improvement Plan to be provided.	The next update is scheduled for 5 April 2023 committee meeting.
22 Feb 2023	School Attainment and School Improvement	More information on the school's consortia and examples of BEP's thematic projects that have helped schools across the city.	E-mailed on 27 March 2023.
		Further information on COVID 19 Catch Up Premium.	E-mailed on 27 March 2023.
		The Developing Local Provision (DLP).	E-mailed Members on 13 March 2023.
		The recruitment and retention rates of teachers in the city in comparison to other areas.	
22 Feb 2023	School Exclusions, Part-Time Timetables, & Unsuitable School Places	Officers to come back in six months with an update on the progress of the work undertaken.	Added to the Work Programme under 'to be scheduled'.
		The following information to be provided:	Information e-mailed on 4 April 2023.

EDUCATION AND CHILDREN'S SOCIAL CARE O&S COMMITTEE
ACTION TRACKER 2022-23

Date	Agenda Item	Action	Update
		<ul style="list-style-type: none"> • The total number of children currently permanently excluded and temporarily excluded. • The number of children with SEND currently excluded. • A breakdown of the figures for children suspended for less than five days and more than five days. • The current figures as the information showed that 3,000 pupils per 10,000 pupils had been suspended over the timeframe given and half of whom had an Education, Health, and Care plan (EHCP). • Children without a school place were referred to the Home Bridging Team and reassurance was requested that every child had a package of support and how many of these had a home tutor. • More information about the School Admissions (In-Year Admissions) team work to support children back into school, and the number of pupils in-year they support. • The part-time timetables and the ethnicity data only gives percentages, and the numbers were requested. • How long pupils have been on part-time timetables. • Whether those that were on part-time timetables have an unmet need (Part-time timetable: Reasons slide). • The number of children with an EHCP in a mainstream school who were awaiting a mainstream place. 	
5 Apr 2023	Children's Trust	Confirmation to be provided via e-mail of the number of reduced short breaks packages.	Information was provided at the 17 May 2023 committee meeting.

EDUCATION AND CHILDREN'S SOCIAL CARE O&S COMMITTEE
ACTION TRACKER 2022-23

Date	Agenda Item	Action	Update
		The Children's Trust to attend a future committee meeting(s) to discuss the Ofsted report and the review of short breaks.	The Children's Trust will attend the May committee meeting to provide a precise of the Ofsted report. The review of short breaks has been added to the work programme under 'to be scheduled'.
5 Apr 2023	Improving Services for Children and Families Improvement Programme Progress Update	<p>The next quarterly update is due July/September 2023 and information to include:</p> <ul style="list-style-type: none"> • Where the KPIs were reported to (e.g. SEND Improvement Board). • The number of children and young people (aged 5-16) with an Education and Health Care Plan (EHCP) awaiting specialist placements to be RAG rated and more detail to be provided of what they were doing to support the children. • The priority to continue to strengthen the support for learning and education provision for children ever known to a social worker, meant those children that had previously been known to the service, and this will be made clear. • Officers to look at how the RAG ratings were presented. 	Added to the work programme under 'to be scheduled'.
		Cllr. Des Hughes to provide information (with parental permission) on the person who was entitled to home to school transport but was not getting this service to Sue Harrison.	Cllr. Des Hughes received an update from Home to School Transport / Children's Travel Service two hours after the committee meeting.
17 May 2023	Action Tracker	The timeline for when the SEND Sufficiency Report would be available to be provided.	

EDUCATION AND CHILDREN'S SOCIAL CARE O&S COMMITTEE
ACTION TRACKER 2022-23

Date	Agenda Item	Action	Update
17 May 2023	Young People's Substance Use Service	Members to contact Aquarius if they are aware of any problem areas in relation to Anti-Social Behaviour (ASB) and young people in unsuitable housing/Homes in Multiple Occupation (HMOs).	
		Aquarius to provide the timeline for the Manchester Met University project.	
17 May 2023	SEND	<p>The following to be provided via e-mail:</p> <ul style="list-style-type: none"> • The spend information for staffing within the SEND and Inclusion Service. • Information on the indicators in the APP on the Council's website that state, 'requires baseline.' 	
		The Committee to provide further questions in writing for officers to provide a written response.	

Birmingham City Council

Education, Children and Young People

Overview and Scrutiny Committee

14 June 2023



Subject: Delivering Effective and Flexible Scrutiny

Report of: Christian Scade, Head of Scrutiny and Committee Services

Report author: Fiona Bottrill, Senior Overview and Scrutiny Manager

1 Purpose

- 1.1 To consider how the Education, Children and Young People Overview and Scrutiny Committee will develop a flexible and effective work programme for 2023/24.

2 Recommendations

- 2.1 To note the development of a flexible and effective work programme for 2023/24 as developed by members of the Co-ordinating Overview and Scrutiny Committee in the last Municipal year 2022/23 (ref: Appendix 1).

3 Any Finance Implications

- 3.1 No direct financial implications resulting from this report.

4 Any Legal Implications

- 4.1 No direct legal implications resulting from this report.

5 Any Equalities Implications

- 5.1 The Council has a Public Sector Equality Duty under the Equality Act (2010) to have due regard to the need to:
 - Eliminate discrimination, harassment, victimisation and any other conduct that is prohibited by or under the Act;
 - Advance equality of opportunity between persons who share a relevant protected characteristic and persons who do not share it;
 - Foster good relations between persons who share a relevant protected characteristic and persons who do not share it.

- 5.2 The Committee should ensure that it addresses these duties by considering them during work programme development, the scoping of work, evidence gathering and making recommendations. This should include considering: how policy issues impact on different groups within the community, particularly those that share a relevant protected characteristic; whether the impact on particular groups is fair and proportionate; whether there is equality of access to services and fair representation of all groups within Birmingham; whether any positive opportunities to advance equality of opportunity and/or good relations between people are being realised.

6 Appendices

- 6.1 Appendix 1 – A More Flexible, Effective Scrutiny Function for 2023/24.

APPENDIX 1: A MORE FLEXIBLE, EFFECTIVE SCRUTINY FUNCTION FOR 2023-24

In April 2021, the City Council adopted an Overview & Scrutiny Framework document that set out a vision for Overview & Scrutiny in Birmingham.

“To ensure effective democratic accountability and oversight of the Council’s executive. This will be achieved by a Member-led Scrutiny function which is held in high regard by its many stakeholders and which adds value for the people of Birmingham.”

“To achieve this, Scrutiny will follow the nationally agreed ‘Four Principles of Good Scrutiny’:

- **Amplify public voice and concerns;**
- **Drive improvement in public services;**
- **Provide constructive ‘critical friend’ challenge; and**
- **Be led by ‘independent minded people’ who take responsibility for their role.”**

“Scrutiny must add value and not duplicate the other forms of performance management, review or inspection. that Scrutiny is involved in a timely manner, at a point where the outcome can be influenced, to ensure involvement is meaningful.”

The framework document recognised that:

“Creating a strong organisational culture that recognises the critical role of an independent Scrutiny in the governance process is essential to adding value and creating efficient and effective services.”

“Scrutiny should be well planned and timely.”

Unfortunately, Scrutiny has not always delivered on these goals and in its relationship with the Council’s executive (i.e., Cabinet) and the Chief Executive’s Senior Leadership Team – Scrutiny has not always been held in equal respect. For some years, Overview & Scrutiny has pursued very few issues that have contributed significantly to the thinking and actions of the Council’s Cabinet and the Chief Executives senior management team. We have not always been enabled to deliver on the aspirations set out in the O & S Framework document.

As we move into the 2023–24 municipal year, the roles and responsibilities must be clear:

“Overview & Scrutiny Chairs are responsible for leading and co-ordinating the work the Scrutiny Committee so that Scrutiny functions in a positive, constructive and non-partisan manner. Overview and Scrutiny members must contribute time and effort to both the development and the carrying out the Scrutiny work programme

So, in adopting their responsibility, the present Co-ordinating O&S members are putting forward a number of suggestions that will improve the way in which Scrutiny Committees function, learning from their own experiences in 2022-23.

1. Remit of Overview & Scrutiny Committees

The remit and workload of committees is uneven. Particularly, the remit of the Housing & Neighbourhoods and Health & Social Care Committees is much larger than that of other committees.

In a separate document, Scrutiny Planning 2023/24, the present Co-ordinating O&S members have reviewed the terms of reference of Scrutiny Committees and are recommending arrangements for 2023-24 that will ensure that the workloads of the committees are more evenly balanced and, in part, better aligned with the remits of Cabinet Members. Co-ordinating O&S will consult further over the next 6 months on further changes to the structure and operation of Scrutiny.

2. Engagement with Cabinet Members

In the current Scrutiny structure, most Cabinet Members attend multiple committees to report on their activities and policies – with some Cabinet Members being asked to attend three or four separate Scrutiny committees. This takes up a considerable portion of the time allocated to committee meetings and requires an equally considerable time commitment by Cabinet Members and the officers that support them. Moreover, many of these reports do not lead to Scrutiny added value or impact as the reports are presented for information and noting.

A Cabinet Members should only be in formal attendance when deemed necessary by the relevant Scrutiny Chair.

There will be occasions when an Overview & Scrutiny Committee will wish to receive an update report on a specific policy or initiative at a scheduled meeting of the committee, to allow members to publicly consider the appropriateness of that policy or initiative to the Council's Corporate Plan and the challenges faced by the Council – a recognised part of the role of Scrutiny. Also, these update reports could be scheduled at the request of the Cabinet Member so that Scrutiny is involved in a timely manner.

These opportunities should arise from regular dialogue between a Cabinet Member and the relevant Scrutiny Chair; and always with the intention that the Scrutiny committee should be adding value through its engagement with the Cabinet Member.

A Cabinet Member may wish to issue directly to members of an Overview & Scrutiny Committee a briefing note to provide members with background information, especially important at the start of the municipal year as some committee members may not have knowledge of plans and strategies being pursued by the Cabinet/Council.

Furthermore, it should be incumbent on a Cabinet Member to advise a Scrutiny Chair, in a timely manner, of a report being taken to Cabinet when the Scrutiny Chair is listed as the relevant Scrutiny Chair, or of a report being placed on the Forward Plan.

3. Meeting arrangements

For years, Scrutiny committees have met in formal, structured public meetings, mostly monthly. Some flexibility in meeting arrangements could bring advantages, particularly if Scrutiny members are being engaged in the other work of the committee – such as a Task & Finish Group.

Initially at the start of the municipal year, through informal meetings or workshops, members could identify a ‘menu’ of issues (including policy development, policy review, issues of accountability, statutory functions, voice of the public,) as the potential work programme of that committee – meeting with the Cabinet Member(s) to ensure the list of issues would be welcomed by them. The list would be a ‘menu’ from which topics could be selected for consideration by the committee or a Task & Finish Group. The committee would regularly review the ‘menu’ and decide which issues need to be examined further and how that work would be undertaken. Scrutiny activities should be thorough and undertaken in a timely manner.

At the June meetings, each Committee will consider information including key data from the City Observatory, information from Corporate Performance reports, Cabinet Member and directorate priorities and issues recommended or carried forwards from the previous scrutiny work programmes to inform the initial menu of topics for the work programme for the year.

Aspects of the work programme would be assigned¹ to scheduled (public) meetings of the committee or a more limited number of members that might take evidence from a number of witnesses, whilst other issues could be assigned to Task & Finish Groups set up by the committee - with these groups meeting in public or private sessions as required, enabling the committee to focus on specific matters throughout the year as appropriate and without unnecessary delay.

Whilst scheduled meetings of the committee would rely primarily on resources available through the Scrutiny Office, other Scrutiny activities could be supported by resources from elsewhere in the Council – as successfully achieved this year by the Customer Services Programme and Homes for Ukraine Task & Finish Groups set up by the Co-ordinating O&S Committee.

A Task & Finish Group or other sub-committee arrangements would include members from different political groups – but not necessarily politically balanced, and would have Terms of Reference, setting out aims, methodology and timescale, agreed by the sponsoring committee and would have to report back to that committee with a final report. The sponsoring committee could also determine whether a Task & Finish Group could include non-executive members from beyond the committee to draw on other members’ interest and experience, but there would be a limit on the number of co-options to prevent a Task & Finish Group from becoming ineffective.

It may be appropriate for a Scrutiny report of significant importance to be reported directly to Council rather than via the Scrutiny Business Report to Council three times a year. Such requests would need to be directed to the Council Business Management Committee.

¹ <https://cfigs.org.uk/wp-content/uploads/Work-Programming-FINAL.pdf>

Birmingham City Council

Education, Children and Families Overview and Scrutiny Committee

14 June 2023



Subject: Developing the Education, Children and Young People Overview and Scrutiny Committee's Work Programme

Report of: Christian Scade, Head of Scrutiny and Committee Services

Report author: Fiona Bottrill, Senior Overview and Scrutiny Manager

1 Purpose

- 1.1 This report provides information for the Education, Children and Young People Overview and Scrutiny Committee to consider in developing their work programme for 2023-24. It identifies potential issues for the Committee to explore and sets out the range of scrutiny methods which could be adopted.
- 1.2 The report refers to the relevant Cabinet Member Priorities and forthcoming decisions; issues recommended to be carried forward from the 2022-23 Overview and Scrutiny work programme, which are specific to this Committee's remit; and tailored high level summary from the City Observatory and Programmes, Performance and Improvement Division.

2 Recommendations

- 2.1 That the Committee:
 - Notes the information set out in Appendices 1-3 and identifies a menu of topics for the Committee to explore over the coming year.
 - Confirms, subject to further input from the Chair and Deputy Chair outside of the meeting, items for the Committee meeting in July.
 - Agrees the issues that the Committee will consider during September – October 2023, the proposed aims and objectives and the preferred method of scrutiny.
 - Notes that a draft work programme will be presented to the Committee meeting in July for consideration and approval.
 - Notes, subject to further input from the Chair and Deputy Chair outside of the meeting, its proposed work programme will be submitted to Co-

ordinating O&S to enable work to be planned and co-ordinated throughout the year.

- The Committee appoints members of the Task and Finish Group for the Child Criminal Exploitation Inquiry and the members of the Task and Finish Group for Children and Young People's Mental Health Inquiry.

3 Background

3.1 The [statutory guidance for local government overview and scrutiny](#) sets out the role it can play in holding an authority's decision makers to account. This makes it fundamentally important to the successful functioning of local democracy.

3.2 Effective Overview and Scrutiny should:

- Provide constructive 'critical friend' challenge.
- Amplify the voices and concerns of the public.
- Be led by independent people who take responsibility for their role.
- Drive improvements in public services.

3.3 The role and functions of Overview and Scrutiny Committees are outlined in [The City Council's Constitution | Birmingham City Council](#) They will:

- Make reports and/or recommendations to the full Council, the Executive and/or other organisations in connection with the discharge of the functions specified in their terms of reference.
- Consider any matter covered in their terms of reference that may affect or be likely to have an effect on the citizens of Birmingham; relevant to the Council's strategic objectives; relevant to major issues faced by officers in managing a function of the Council; and likely to make contribution to moving the Council forward and achieving key performance targets.

3.4 Effective scrutiny needs to add value. A well planned and timely work programme enables Overview and Scrutiny Committees to be involved at the right time and in the right way, and ensure their involvement is meaningful and can influence the outcome.

4 Developing the Work Programme 2023-24

4.1 The document on developing flexible and effective scrutiny, that is considered as a separate agenda item at this meeting, describes a revised approach to work programme development. It proposes that the Committees identifies a 'menu' of issues (including policy development, policy review, issues of accountability and statutory functions) at the start of the year. The Committee should then regularly review the 'menu' and decide which issues need to be examined further, and how that work would be undertaken. Scrutiny activities should be thorough and undertaken in a timely manner.

- 4.2 There are a range of ways to undertake scrutiny. This new approach will enable flexible scrutiny and outlines a shift from monthly formal meetings to a combination of approaches. The Committee will choose the most effective scrutiny method to achieve the desired aims and objectives.
- 4.3 Based on Statutory Guidance published in 2019, different scrutiny methods include (but are not limited to):
- A single item, or items, on a committee agenda – this fits more closely the “overview” aspect of the Scrutiny function and has limited opportunity for effective scrutiny. It is most appropriate for specific issues where the committee wants to maintain a watching brief.
 - A single item meeting, either as the committee or a more limited number of Members. It has the capacity to enhance the previous option by taking evidence from a number of witnesses.
 - A task and finish day - provided that these are properly focused, they ensure Councillors can swiftly reach conclusions and make recommendations and are effective even for complex topics.
 - A task and finish review – this is an enhancement of the previous option being held over four or six meetings spread over a limited number of months.
- 4.4 Appendix 1 outlines the outstanding items from the Overview and Scrutiny work programmes 2022-23, which relate to the remit of this Committee.
- 4.5 Appendix 2 sets out the current Cabinet Member priorities and forthcoming decisions, which relate to the remit of this Committee.
- 4.6 Appendix 3 provides a high-level summary of:
- The strategic and organisational context, including the Corporate Plan 2022-26, city and citizen outcome indicators and a summary of external factors impacting on the remit of the committee.
 - A summary of key performance indicators and delivery milestones against Corporate Plan priorities, and directorate priorities for 2023/24 relevant to the remit of this Committee
 - Transformation and improvement activity relevant to the remit of this committee.
- 4.7 Altogether this information suggests potential topics for the Committee to consider when determining a work programme for 2023-24. The Committee is advised to consider where it can best add value through scrutiny.
- 4.8 Members often have a number of topics suggested to them and are therefore required to **prioritise** matters for consideration. The Scrutiny Framework sets out the following factors could be considered:
- Public interest: concerns of local people should influence the issues chosen;

- Ability to change: priority should be given to issues that the Committee can realistically influence;
- Performance: priority should be given to areas in which the Council and Partners are not performing well;
- Extent: priority should be given to issues that are relevant to all or a large part of the city;
- Replication: work programme must take account of what else is happening to avoid duplication.

4.9 Overview and Scrutiny Chairs are advised to maintain regular engagement with Cabinet Members to enable flexibility to be built into the Overview and Scrutiny work programme, so as to respond to the Council's policy priorities in a timely way.

5 Any Finance Implications

5.1 There are no financial implications arising from the recommendations set out in this report.

6 Any Legal Implications

6.1 There are no legal implications arising from the recommendations set out in this report.

7 Any Equalities Implications

7.1 The Council has a Public Sector Equality Duty under the Equality Act (2010) to have due regard to the need to:

- eliminate discrimination, harassment, victimisation and any other conduct that is prohibited by or under the Act;
- advance equality of opportunity between persons who share a relevant protected characteristic and persons who do not share it;
- foster good relations between persons who share a relevant protected characteristic and persons who do not share it.

7.2 The protected characteristics and groups outlined in the Equality Act are: Age; Disability; Gender Reassignment; Marriage and Civil Partnership; Pregnancy and Maternity; Race; Religion and Belief; Sex, and Sexual Orientation.

7.3 The Committee should ensure that it addresses these duties by considering them during work programme development, the scoping of work, evidence gathering and making recommendations. This should include considering: how policy issues impact on different groups within the community, particularly those that share a relevant protected characteristic; whether the impact on particular groups is fair and proportionate; whether there is equality of access to services and fair representation of all groups within Birmingham; whether any positive opportunities to advance equality of opportunity and/or good relations between people are being realised.

- 7.4 The Committee should ensure that equalities comments, and any recommendations, are based on evidence. This should include demographic and service level data and evidence of residents/service-users views gathered through consultation.

8 Appendices

8.1 Appendix 1: Work Programme Mapping

Appendix 2: Cabinet Member Priorities and Forthcoming Decisions

Appendix 3: Corporate Priorities, Performance and City Outcomes

Appendix 4: Work Outline / Terms of Reference for the Child Criminal Exploitation (CCE) Inquiry

Appendix 5: Work Outline / Terms of Reference for the Children and Young People's Mental Health Inquiry.

9 Background Papers

9.1 [Birmingham City Council Constitution](#)

9.2 Birmingham City Council Overview and Scrutiny Framework April 2021

Appendix 1 – Outlines the outstanding items from the Overview and Scrutiny Work Programmes 2022-23 which relate to the remit of this Committee

Current O&S Committee	New O&S Committee	Item/Topic	Aims and Objectives (if outlined)	Why carry forward to next year?	Any other information (e.g. scrutiny method/ Council motion/ asked to come back in 6 months etc)
Education & Children's Social Care	Education, Children and Young People	Grand challenges and City Observatory data indicators by committee remit	To provide the data to assist with prioritising the work of the committee.	See previous comment	
Education & Children's Social Care	Education, Children and Young People	Scrutiny Inquiry: Child Criminal Exploitation	The T&F Group need to complete the Inquiry and present the findings and recommendations to City Council.	See previous comment	T&F Group comprised of Cllrs: Hughes, Bano, Jan, Moledina, and Morrall
Health & Social Care (Lead) / Education and Children's Social Care	Health & Adult Social Care (Lead) / Education, Children and Young People	A joint Scrutiny Inquiry with Health and Social Care O&S Committee: Children and Young People's Mental Health	The T&F Group to complete the Inquiry and present the findings and recommendations to City Council	See previous comment	T&F Group comprised: Health and Social Care - Cllrs: Brown, Hartley, Moore, Tilsley, and Pritchard Education and Children's Social Care - Cllrs: Bermingham, and Morrall
Education & Children's Social Care	Education, Children and Young People	Student attendance at school during their period (Period Poverty Inquiry)	The focus of the report would be on the learning / good practice that has been identified and how this being shared with schools across the city, and members of the Health and Adult Social Care O&S Committee to be invited to attend for this item	See previous comment	This came from the Health and Social Care OSC's Scrutiny Inquiry: Tackling Period Poverty and Raising Period Awareness
Education & Children's Social Care	Education, Children and Young People	Tribunals and delays etc., and feedback on how the role of Legal	Janie Berry, City Solicitor to update Members on tribunals and delays etc., and feedback on how the role of Legal	See previous comment	

Appendix 1 – Outlines the outstanding items from the Overview and Scrutiny Work Programmes 2022-23 which relate to the remit of this Committee

Current O&S Committee	New O&S Committee	Item/Topic	Aims and Objectives (if outlined)	Why carry forward to next year?	Any other information (e.g. scrutiny method/ Council motion/ asked to come back in 6 months etc)
		Services contributes and makes risk informed decisions.	Services contributes and makes risk informed decisions.		
Education & Children's Social Care	Education, Children and Young People	School Exclusions, Part-Time Timetables, & Unsuitable School Places	An update on progress of the work undertaken to address the issues.		It was agreed that officers would come back in six months (September 2023).
Education & Children's Social Care	Education, Children and Young People	Birmingham Safeguarding Children's Partnership (BSCP)	To present their report which will focus on the safeguarding arrangements between 2020-23 and cover the impact of the Covid-19 pandemic on the safeguarding and wellbeing of children.	It is customary for the Independent Chair to present her accountability report and the BSCP annual report. BSCP last attended on 16th February 2022.	The final draft report is being presented to the BSCP Executive Board on 24th May 2023
Education & Children's Social Care	Education, Children and Young People	Short breaks	The Children's Trust to attend and provide an update on the issues raised at the April 2023 committee meeting following the review of short breaks.	Members asked for this to come back when appropriate	
Education & Children's Social Care	Education, Children and Young People	Improving Services for Children and Families Improvement Programme	To provide a quarterly progress update	This is a quarterly update (July / September 2023)	

Appendix 1 – Outlines the outstanding items from the Overview and Scrutiny Work Programmes 2022-23 which relate to the remit of this Committee

Current O&S Committee	New O&S Committee	Item/Topic	Aims and Objectives (if outlined)	Why carry forward to next year?	Any other information (e.g. scrutiny method/ Council motion/ asked to come back in 6 months etc)
Education & Children's Social Care	Education, Children and Young People	City of Birmingham School (COBS)	The Strategic Director, and the Head Teacher of COBS to provide the vision regarding ensuring there was the right provision across the city, and the issues regarding non-attendance at COBS		
Education & Children's Social Care	Education, Children and Young People	Children and Families Directorate's KPIs	To provide a better understanding of the KPI's		KPI's could be looked at in the context of the items on the agenda. For instance, when undertaking a deep dive into SEND
Education & Children's Social Care	Education, Children and Young People	Education and Health Care Plans (EHCPs)	To update Members on the EHCPs	Concerns have been raised	This could be part of the SEND discussion
Education & Children's Social Care	Education, Children and Young People	Home to School Transport	To update Members on the issues with the service	Concerns have been raised regarding the service	
Education & Children's Social Care	Education, Children and Young People	SENDIASS	To update Members on the improvement plan in place		
Health & Social Care	Health & Adult Social Care	Domestic Abuse	Co-ordinating O&S Resolution 17 February 2023: To ask scrutiny chairs to take back to their own committees how Domestic Abuse (DA) is relevant to their own Overview and Scrutiny Committees, consider how they can have an involvement and feed back to Co-ordinating Overview and Scrutiny Committee	This had not been picked up in 2022-23	This also follows on from Council Resolution: 6 Dec 2022
CWG, Culture & Physical Activity	Health & Adult Social Care	CWG Legacy	Consider relevant CWG legacy	New for 2023-24 as previously undertaken by	Neighbourhoods O&S will take the lead around CWG legacy in general, however legacy will also be

Appendix 1 – Outlines the outstanding items from the Overview and Scrutiny Work Programmes 2022-23 which relate to the remit of this Committee

Current O&S Committee	New O&S Committee	Item/Topic	Aims and Objectives (if outlined)	Why carry forward to next year?	Any other information (e.g. scrutiny method/ Council motion/ asked to come back in 6 months etc)
				CWG, Culture and Physical Activity O&S Committee (no longer in place)	integrated across all O&S Committees as relevant to their remit

Appendix 2: Cabinet Member Priorities and Pending Decisions which relate to the remit of the Committee

Education, Children and Young Peoples Overview and Scrutiny Committee's Terms of Reference	Cabinet Member Priorities
<p>To fulfil the functions of an Overview and Scrutiny Committee as they relate to any policies, services and activities concerning:</p> <ul style="list-style-type: none"> - education and children's social care - the safety and wellbeing of children, including safeguarding with statutory partners. - the needs of all children and young people, families and carers - oversight of the Children's Trust - early years health and wellbeing - looked after children, corporate parenting. - Special Education Needs and Disability - school improvement, school places and travel to and from school - youth engagement and youth services - development of 14-19 career pathways, enterprise and entrepreneurship in Birmingham schools. <p>The Overview and Scrutiny Committee dealing with education matters shall include in its membership the following voting representatives:</p> <ul style="list-style-type: none"> - Church of England diocese representative (one) - Roman Catholic diocese representative (one) - Parent Governor representatives (two). 	<p>To continue to build on the improving services being delivered with our Birmingham Children's Trust and partner agencies.</p> <p>To continue efforts on ensuring our services are sustainable, compliant and designed to deliver best outcomes for children, young people, families and communities through working with our partners and wider city council team.</p> <p>To continue to ensure everything we do is inclusive for all our children and young people from all communities, backgrounds and needs.</p> <p>To embed our Improving Services for Children and Families Plan which brings together improvement and transformation activity that impacts on children, young people, and their families. This plan seeks to drive forward the short and medium-term work to strengthen and improve services for children across the Council.</p> <p>Continuing to work with key partners to widen access to Early Education Entitlement (EEE) and improve Early Years multiagency arrangements with health colleagues.</p> <p>To continue to work with our DfE appointed commissioner to transform and improve services for children with Special Educational Needs and Disabilities (SEND) in line with statutory requirements. In order to deliver sustainable, well performing services with inclusion of children and young people at the heart through delivering the Accelerated Progress Plan and the action plans of the SEND and Inclusion strategies.</p>

Education, Children and Young Peoples Overview and Scrutiny Committee's Terms of Reference	Cabinet Member Priorities
	<p>Delivering on our SEND sufficiency plan to ensure we continue to increase capacity to meet the education needs of our children and young people with assessed needs.</p> <p>To further develop our Children and Young Persons' Travel Service with a robust eligibility process that identifies the needs of the young people we support, ensuring that Transport is suitable for their needs and encourages their development and develop a travel menu that will include promotion of personal transport budgets and a Travel Training service to support development towards independent travel.</p> <p>Strengthen approaches to identify, recognise and respond to the vulnerability of specific groups of children and young people including additional action to ensure:</p> <ul style="list-style-type: none"> a) Children missing out on education are identified and supported to quickly return to school/education b) Robust arrangements are in place for children and young people who are Electively Home Educated c) Children supported by the Virtual School receive a stable education and are enabled to achieve their academic potential d) License functions for Child Employment and Chaperones are improved to ensure a timely and appropriate response <p>Commission the Healthy Child Programme to align with the developing Family Hubs Model, in order to achieve the best outcomes for children and young people 0-19.</p>

Performance and Improvement Summary

Education, Children and Young People

Overview and Scrutiny Committee

This document provides a high-level summary of:

- The strategic and organisational context, including the Corporate Plan 2022-26, city and citizen outcome indicators, and a summary of external factors impacting on the remit of this Committee.
- A summary of key delivery milestones and performance indicators against Corporate Plan priorities, and directorate priorities for 2023/24 relevant to the remit of this Committee.
- Transformation and improvement activity relevant to the remit of this committee.

Programmes, Performance, and Improvement Division

June 2023



Appendix 3: Corporate Priorities, Performance and City Outcomes

1. STRATEGIC AND ORGANISATIONAL CONTEXT

1A. CORPORATE PLAN 2022-26

An overview of the Corporate Plan 2022-26.

In October 2022, the City Council approved the Corporate Plan 2022-2026 that sets out the organisation's vision and strategic priorities. These priorities are aligned to six themes: Prosperous, Inclusive, Safe, Healthy, Green, and being a Best-in-Class Council. The Plan provides the context for improvement and transformation activity and a framework for the organisation's business planning.

The Corporate Performance and Delivery Plan (CPDP), updated each year, provides a summary of the key delivery milestones and performance measures that are used to demonstrate delivery and performance against the Corporate Plan priorities. The CPDP provides the basis for quarterly reporting to the Corporate Leadership Team (CLT) and Cabinet. The CPDP does not include the totality of the Council's delivery activity but summarises key activity from Directorate Business Plans, delivery strategies, and transformation agendas.

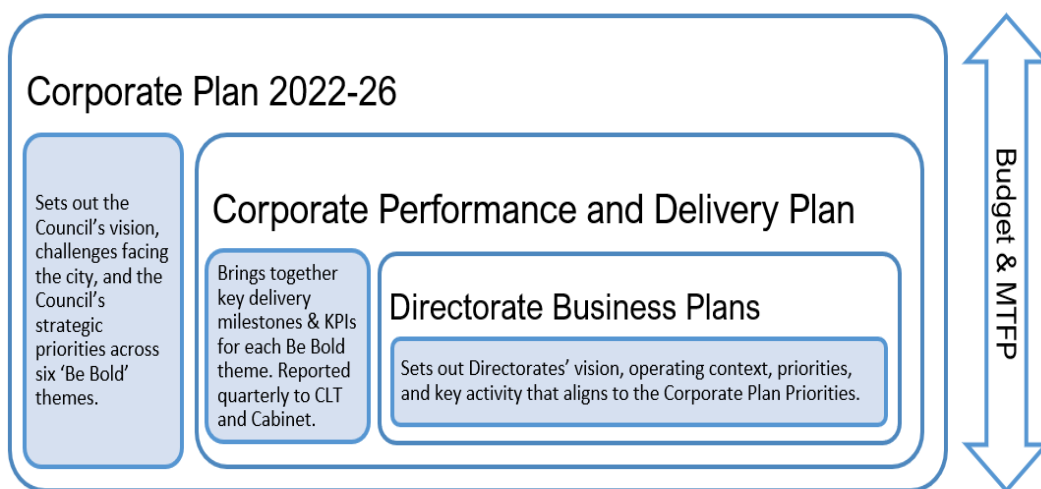


Diagram showing an overview of the Corporate Plan 2022-26:

GRAND CHALLENGES		OUR RESPONSE: BE BOLD OUTCOMES	PRIORITIES
Equality and Inclusion	Unemployment, skills and the local economy	A BOLD PROSPEROUS BIRMINGHAM	1. Support inclusive economic growth 2. Tackle unemployment 3. Attract inward investment and infrastructure 4. Maximise the benefits of the Commonwealth Games
	Opportunities for children and young people	A BOLD INCLUSIVE BIRMINGHAM	5. Tackle poverty and inequalities 6. Empower citizens and enable the citizen voice 7. Promote and champion diversity, civic pride and culture 8. Support and enable all children and young people to thrive
	Community resilience, cohesion and living standards	A BOLD SAFE BIRMINGHAM	9. Make the city safer 10. Protect and safeguard vulnerable citizens 11. Increase affordable, safe, green housing 12. Tackle homelessness
	Health and wellbeing	A BOLD HEALTHY BIRMINGHAM	13. Tackle health inequalities 14. Encourage and enable physical activity and healthy living 15. Champion mental health 16. Improve outcomes for adults with disabilities & older people
	Climate Emergency	A BOLD GREEN BIRMINGHAM	17. Improve street cleanliness 18. Improve air quality 19. Continue on the Route to Net Zero 20. Be a City of Nature
		A BOLD BEST IN CLASS COUNCIL	21. Delivering a Bold Best in Class Council

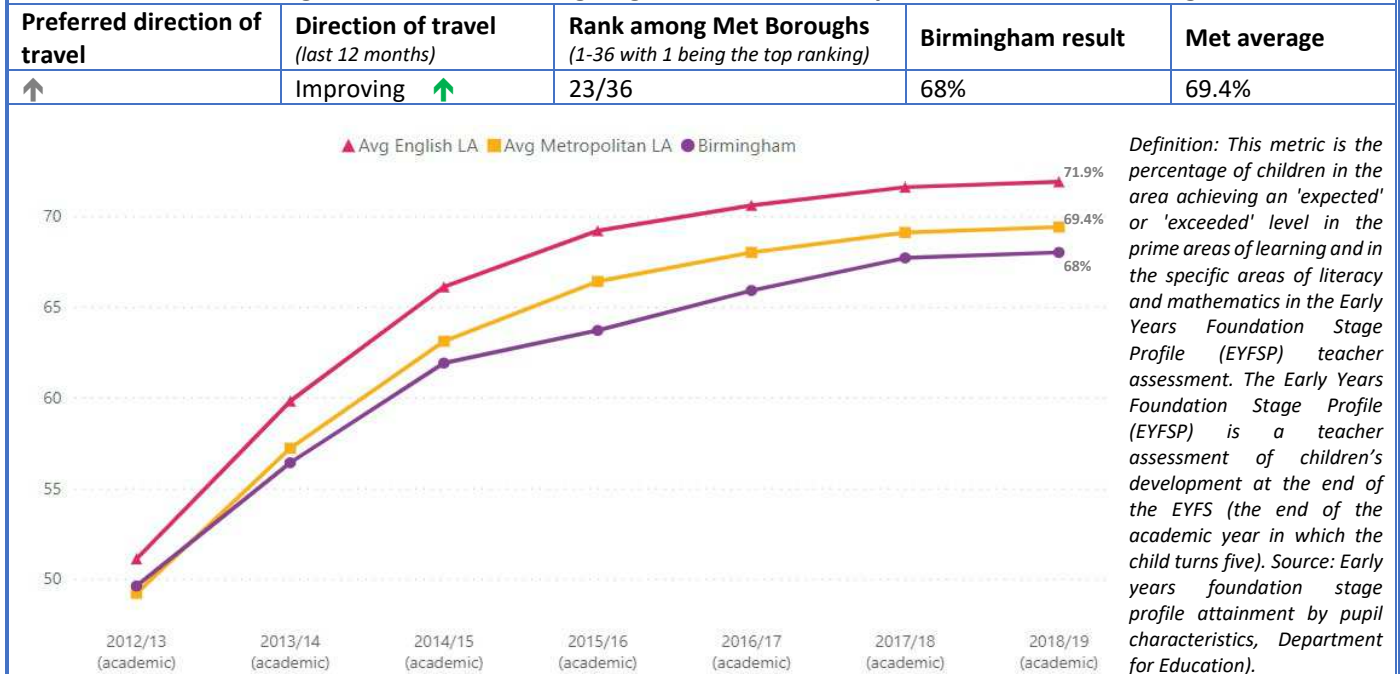
Appendix 3: Corporate Priorities, Performance and City Outcomes

1B. CITY OBSERVATORY SNAPSHOT

A snapshot of key city and citizen outcome data from the City Observatory that is relevant to the remit of this Committee (data extracted May 2023). Other measures are available:

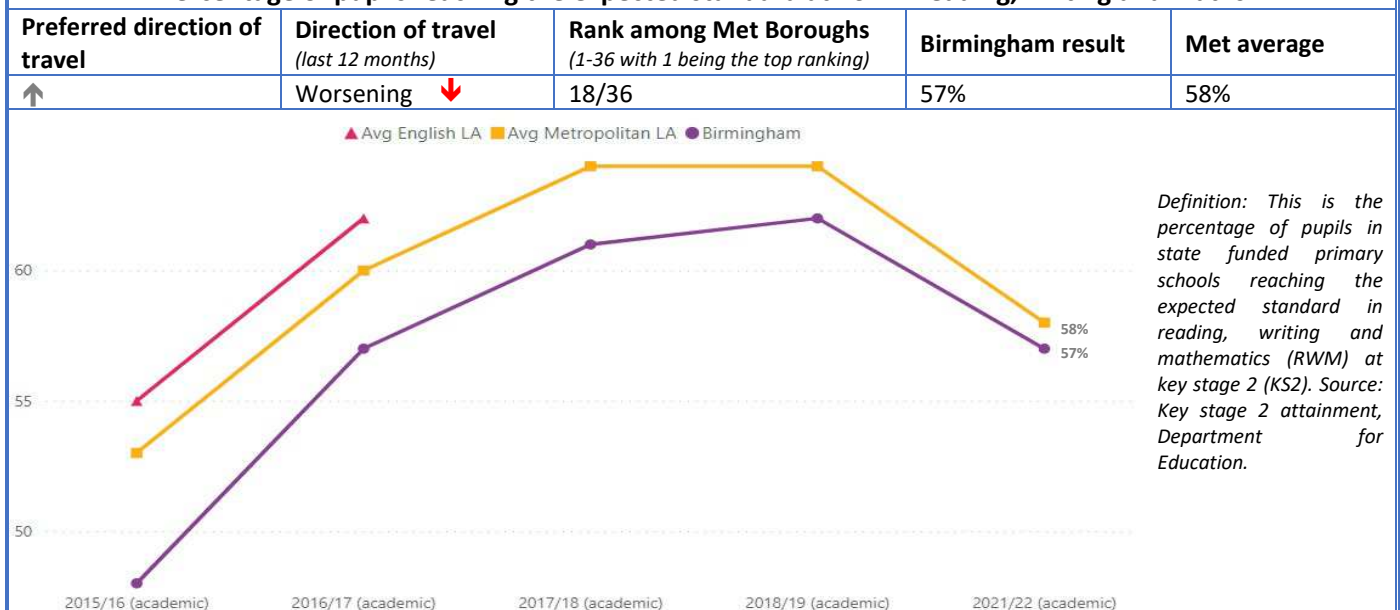
www.cityobservatory.birmingham.gov.uk.

Percentage of children achieving a “good level of development” at foundation stage



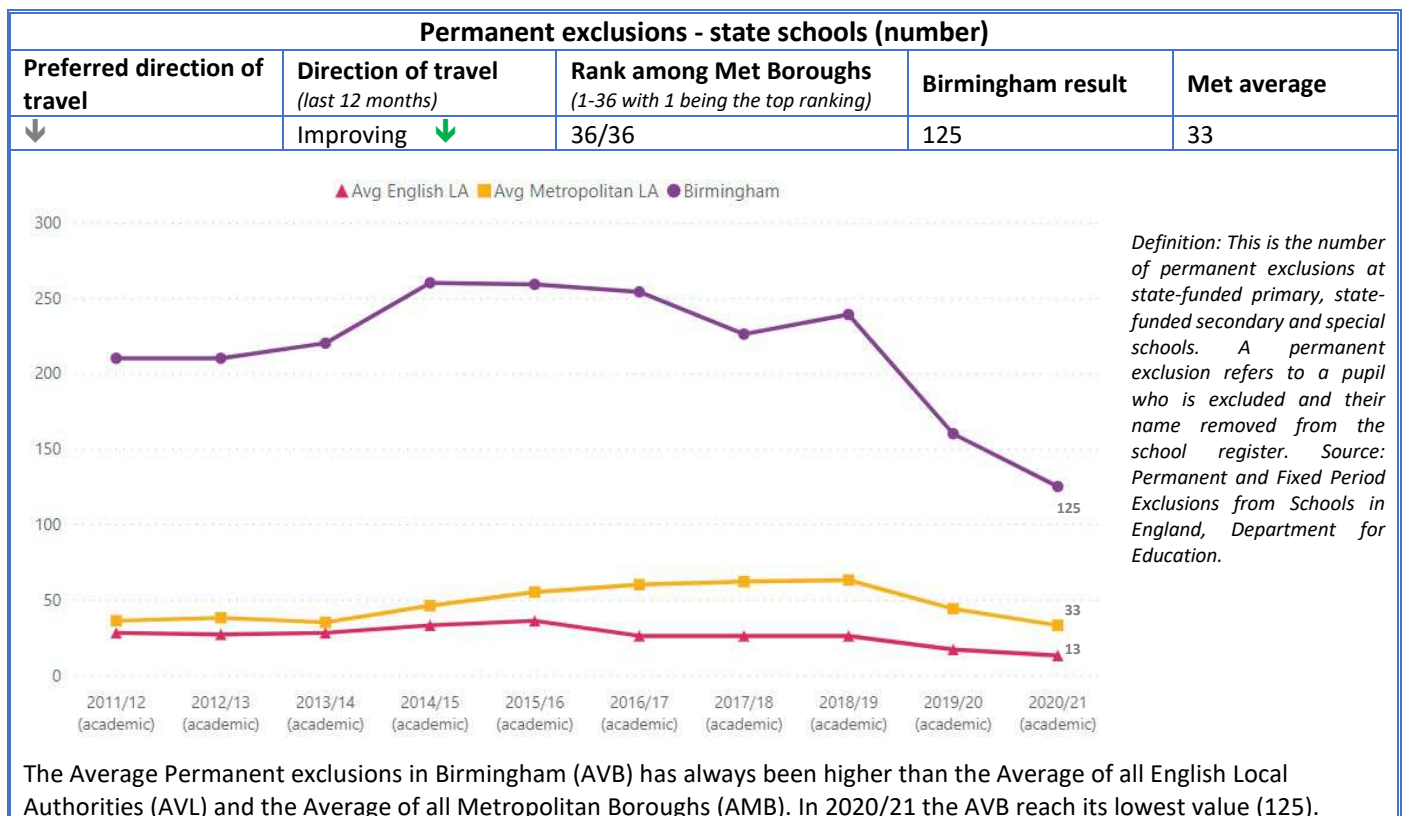
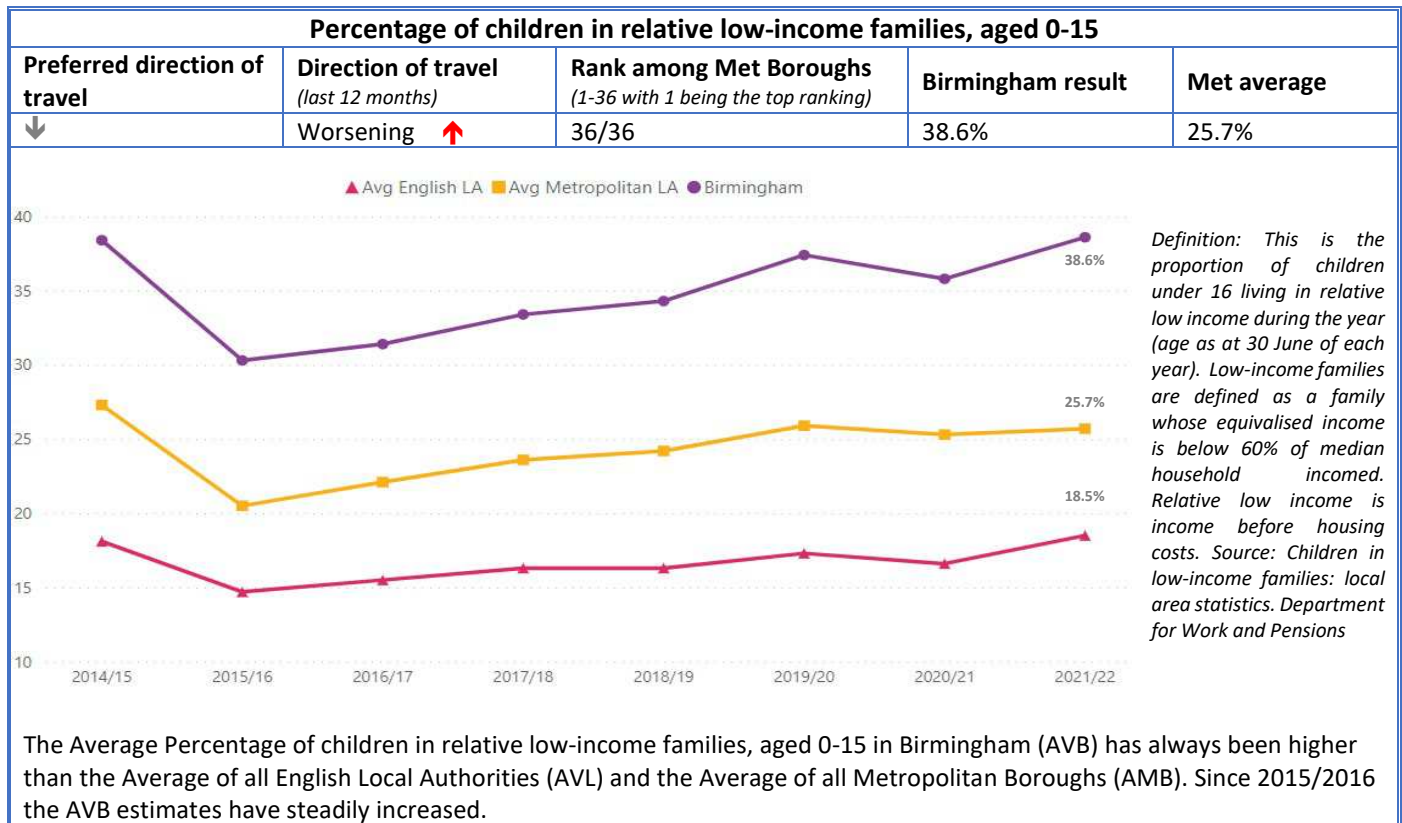
The Average Percentage of children achieving a “good level of development” at foundation stage in Birmingham (AVB) has always been lower than the Average of all English Local Authorities (AVL) and the Average of all Metropolitan Boroughs (AMB), except from the period of 2012/13 (49.6%). The AVB has steadily increased throughout the whole period analysed.

Percentage of pupils reaching the expected standard at KS2 in reading, writing and maths

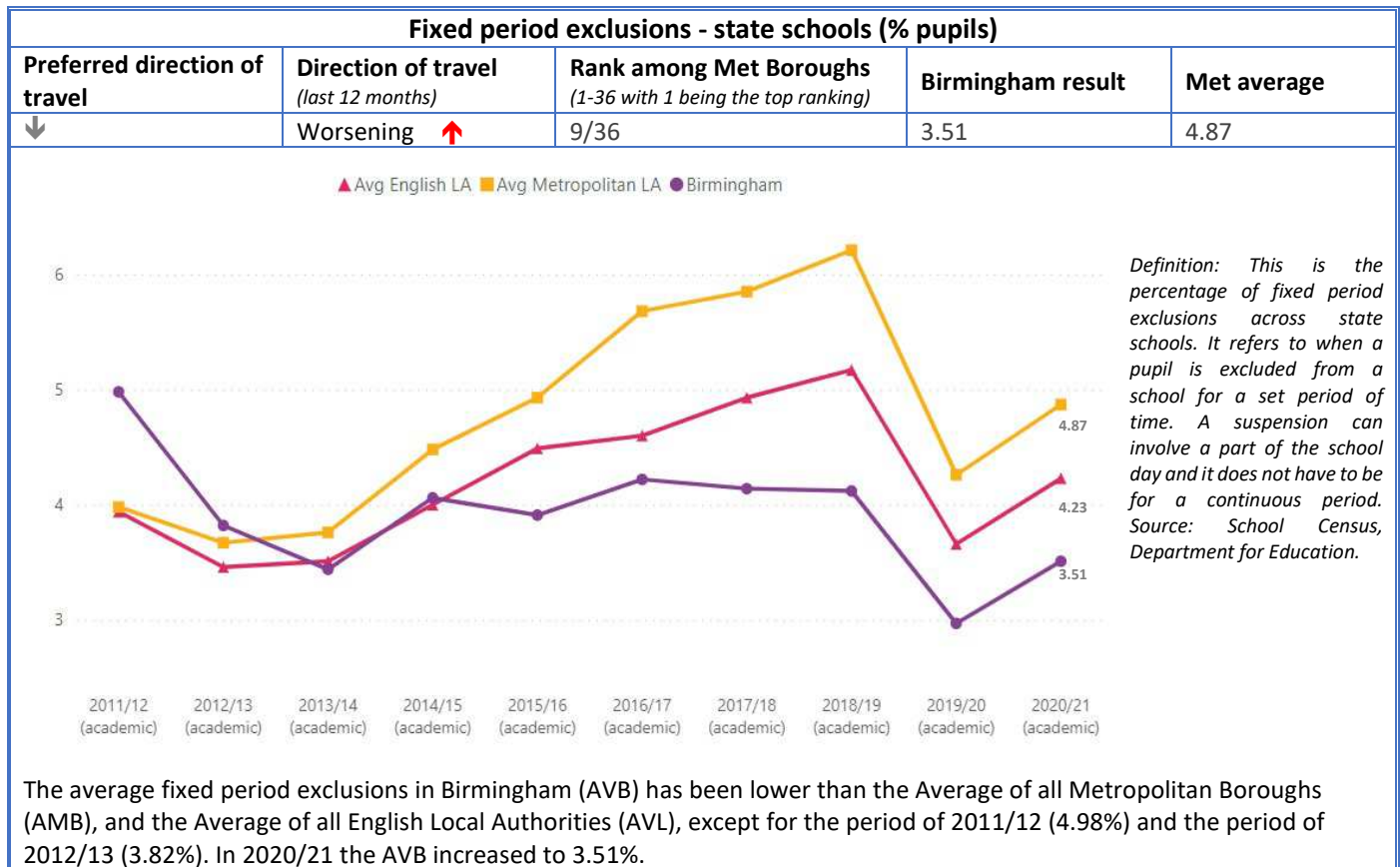


The Average Percentage of pupils reaching the expected standard at KS2 in reading, writing and maths in Birmingham (AVB) has always been lower than the Average of all English Local Authorities (AVL) and the Average of all Metropolitan Boroughs (AMB). The AVB estimates have seen an increase from the period of 2015/16 (48%) to that of 2018/19, and a decrease in the period of 2021/22 (62%).

Appendix 3: Corporate Priorities, Performance and City Outcomes



Appendix 3: Corporate Priorities, Performance and City Outcomes



1C. EXTERNAL ENVIRONMENT

A summary of key events and changes to the external operating environment that is relevant to the remit of this Committee, including changes in national policy or regulatory frameworks.

New strategy and consultation for children's social care reform

- In February 2023 the Government published a new strategy [Stable Homes Built On Love](#). This strategy responds to recommendations made by three independent reviews and sets out six pillars for reform around family help, multi-agency child protection, family networks, homes, social workers and an evidence and data driven learning system. This strategy will inform how roles and responsibilities continue to develop in children's social care and the wider system of support.

Ofsted Inspecting Local Authority Children's Services (Full ILACS Inspection)

- Local Authority Services for children and young people, delivered through the Children and Families Directorate and Birmingham Children's Trust, were inspected from 13th February to 3rd March 2023. All five areas inspected were given a 'Good' grading, with many positive highlights focusing on areas including the quality of staff leadership, partnership working, safeguarding and corporate parenting.

SEND Reforms

- In March 2023 Government published the Special Educational Needs and Disabilities (SEND) and Alternative Provision (AP) Improvement Plan: Right Support, Right Place, Right Time. The plan focuses on building capacity through training to support children to get the help they need earlier, alongside additional specialist school places for those with the greatest needs. The plan aims to ensure children get high-quality, early support wherever they live.
- The transformation of the system will be underpinned by new national SEND and AP standards, which will give families confidence in what support they should receive and who will provide and pay for it, regardless of where they live.
- The Children and Families Directorate and wider partnership will be reflecting these brand-new changes to national policy in service and delivery plans.

Appendix 3: Corporate Priorities, Performance and City Outcomes

Local Area SEND Inspection Framework Update

- Ofsted and the Care Quality Commission launched a new SEND inspection framework in January 2023. The new joint framework sets out the inspection provision for children and young people with SEND within a local area.
- The new framework includes full inspections, monitoring inspections, engagement meetings and thematic visits. SEND inspections will also evaluate how local authorities commission and oversee alternative provisions, and how well members of a local area partnership work together to improve the experiences and outcomes of children and young people with SEND.

Statutory Intervention – SEND Commissioner

- The SEND Improvement Board continue to work with the Commissioner to monitor progress on SEND improvement work following Department of Education intervention into SEND services in Birmingham which have been subject to a statutory direction since late 2021.
- The Commissioner's second report was published in May 2023. The report acknowledged the 'significant and welcome' improvements in certain areas, which reflects the hard work put in by officers, members, and partners, while also reflecting that there is further progress to be made.
- In the report's recommendations the Commissioner sets out his ambition for Birmingham to be a child friendly city. The council shares this ambition and Birmingham was recently accepted onto UNICEF's Child Friendly Cities programme. This will build on the successes over 200 Birmingham schools have achieved in UNICEF's Rights Respecting Schools programme in recent years to really embed children's rights in the city.
- The Council will also be launching its SEND strategy with schools in July, another one of the recommendations made by the Commissioner in his report.

School Improvement

- In March 2022 Government published 'Opportunity for all: strong schools with great teachers for your child', the School Improvement White Paper. This white paper demonstrates how our education system can deliver on the government's priority to level up across the country.
- The government has confirmed that many of the policies set out in the White Paper will not proceed or are being delayed. The government guidance 'Working together to improve school attendance' sets out duties on local authorities with much to be implemented by no later than September 2023.

2. PERFORMANCE AND DELIVERY

2A. 2022-23 PERFORMANCE FOR KEY DELIVERY MILESTONES

An overview of 2022-23 performance for key delivery activity (from the CPDP) that is relevant to this Committee (as reported Cabinet on a quarterly basis). Information is accurate as of 5th June and may be subject to change.

RAG Rating	RAG Definition
 	Action has been achieved (and cannot be reversed)
 	Action on course to be delivered as originally planned or at revised scope/scale agreed with CLT and Cabinet Member
 	Risk of action not being delivered as planned. Root causes of delivery risk have been identified and mitigating actions are in place to resolve
 	Risk of action not being achieved as planned. Root causes of delivery risk are not clear and/or mitigating actions are not in place to resolve
 	RAG not applicable

Corporate Plan Theme	Lead Directorate	Delivery Activity/Milestone	2022-23 BRAG status			
			Q1	Q2	Q3	Q4
Inclusive	Children and Families	Deliver a customer focused and sustainable Home to School Transport service that has safety and reliability at its centre and ensure the safety of all children and young people being transported.	 	 	 	

Appendix 3: Corporate Priorities, Performance and City Outcomes

			2022-23 BRAG status			
Corporate Plan Theme	Lead Directorate	Delivery Activity/Milestone	Q1	Q2	Q3	Q4
Inclusive	Children and Families	Establish a new Strategic Commissioning Function and implement a robust Commissioning Strategy for all commissioning activity within the Children's and Families Directorate.				
Inclusive	Children and Families	Working with partners to develop a Children and Young People's plan for the city.				
Inclusive	Children and Families	Work with key partners to widen access to Early Education Entitlement (EEE) and improve Early Years multiagency arrangements with health colleagues.				
Inclusive	Children and Families	Develop a strategy for the primary phase that seeks to address high rates of exclusions in some areas, low attainment and poor attendance.				
Inclusive	Children and Families	Develop a school place sufficiency strategy to enable the provision of mainstream specialist and special school places for children and young people with additional educational needs.				
Inclusive	Children and Families	Develop a SEND Strategy with partners through a multi-agency, whole systems approach to supporting children, young people and families.				
Safe	Children and Families	Develop and shape the Family Hub Model/locality working for Birmingham, building upon exemplar/pilot activity undertaken with our key partners (e.g. BCT).				
Safe	Children and Families	Develop and Deliver the Children and Families Transformation and Improvement plan: a) Future operating model b) Quality of practice and performance framework c) IT enabled change d) Culture and leadership e) Communications strategy				
Safe	Children and Families	Work with the range of partners to develop systems to enhance the safeguarding of pupils in Out of School Settings				
Safe	Children and Families	Coordinate educational services for Children in Care through the Virtual School.				
Safe	Children and Families	Work in partnership with schools and DfE to deliver and evaluate a 3-year SAFE project a. Recruit schools that meet agreed criteria b. Begin monitoring the SAFE project within cohort of schools				
Healthy	Children and Families	Commission a Holiday, Activity and Food (HAF) programme for children and young people				
Healthy	Children and Families	Work across the range of safeguarding partners, particularly with Forward Thinking Birmingham, to support schools to address concerns around pupils' emotional wellbeing and mental health.				

Appendix 3: Corporate Priorities, Performance and City Outcomes

2B. 2022-23 PERFORMANCE FOR CORPORATE PLAN KPIS

An overview of 2022-23 performance for Corporate Plan key performance indicators (KPIs) that are relevant to the remit of this Committee (as reported to Cabinet on a quarterly basis). Information is accurate as of 26th May and may be subject to change.

RAG Rating	RAG Definition
	Performance is equal to or better than target
	Performance is lower than target but better or equal to tolerance
	Performance is below tolerance
	RAG not applicable

Corporate Plan Theme	Directorate	KPI	2022-23 RAG status			
			Q1	Q2	Q3	Q4
Inclusive	Children and Families	Percentage of care leavers who are in Education, Employment, and Training				
Inclusive	Children and Families	Care leavers in suitable accommodation aged 19, 20 or 21				
Inclusive	Children and Families	Number of children and young people (aged 5-16) with an EHCP awaiting specialist placements for more than 12 weeks		244	278	327
Inclusive	Children and Families	Percentage of new Education Health Care (EHC) plans issued within 20 weeks, excluding exceptions				
Inclusive	Children and Families	Proportion of eligible pupils transported to school				
Inclusive	Children and Families	Early Years Entitlement: Percentage of 2-year-olds accessing Early Education Entitlement (EEE) (compared to statistical neighbours and national average)				
Inclusive	Children and Families	Early Years Entitlement: Percentage of 3 and 4-year-olds accessing 15 hours Early Education Entitlement (EEE)				
Inclusive	Children and Families	Absence Rate: Primary				
Inclusive	Children and Families	Absence Rate: Secondary				
Inclusive	Children and Families	Primary school exclusion rate				
Inclusive	Children and Families	Secondary school exclusions rate				
Inclusive	Children and Families	Special School Exclusion rate				
Safe	Children and Families	Birmingham Children's Trust (BCT) Measure: Re-referral Rate				
Safe	Children and Families	BCT Measure: Average social worker caseload				
Safe	Children and Families	BCT Measure: Percentage of children who become the subject of a Child Protection plan for a second or subsequent time within the last 2 years				
Safe	Children and Families	BCT Measure: Percentage of children in care experiencing three or more moves within a year				
Healthy	Children and Families	Number of individual children attending the HAF programme: Winter holiday				

Appendix 3: Corporate Priorities, Performance and City Outcomes

Corporate Plan Theme	Directorate	KPI	2022-23 RAG status			
			Q1	Q2	Q3	Q4
Healthy	Children and Families	Number of meals taken up by children through the HAF: Winter holiday				
Healthy	Strategy, Equality, and Partnerships	Proportion of children aged 2-2½yrs receiving ASQ-3 as part of the Healthy Child Programme or integrated review				

2C. DIRECTORATE PRIORITIES FOR 2023-24

An overview of Directorate delivery priorities for 2023-24 that are relevant to the remit of this Committee.

CHILDREN AND FAMILIES

Our vision

- Our vision is that Birmingham Children Thrive, all children and young people are safe, healthy, included, confident and achieving. Our children and families are supported by a Children and Families Directorate that has strong governance and management and a strong front line, working with our partner organisations across the city as one system, putting children and families at the heart of everything they do.

How we will work

- As a Directorate we want to identify need and support our children and families early, aiming to get it right first time. We want to work as professionals and provide services that wrap around our children and families, and for the way we work with our children, families, each other and our partners to be strengths and relationship based.

2D. KEY DELIVERY MILESTONES FOR 2023-24

An overview of 2023-24 key delivery activity (from the CPDP) that is relevant to the remit of this Committee. Information is accurate as of 26th May and may be subject to change.

Corporate Plan Theme	Lead Directorate	Delivery Activity/Milestone	Delivery Date
Inclusive	Children and Families	Ensure services are sustainable, compliant and designed to deliver best outcomes for children, young people, families and communities through: Continuing to work with key partners to widen access to Early Education Entitlement (EEE) and improve Early Years multiagency arrangements with health colleagues	Mar 24
Inclusive	Children and Families	Transform and improve services for children with Special Educational Needs and Disabilities (SEND) in line with statutory requirements and to deliver sustainable, well performing services with inclusion of children and young people at the heart through delivering the Accelerated Progress Plan (as part of the DfE Statutory direction) and the action plans of the SEND and Inclusion strategies.	Mar 24
Inclusive	Children and Families	Further develop the Children and Young Persons' Travel Service with a robust eligibility process that identifies the needs of the young people we support, ensuring that Transport is suitable for their needs and encourages their development and develop a travel menu that will include promotion of personal transport budgets and a	Mar 24

Appendix 3: Corporate Priorities, Performance and City Outcomes

Corporate Plan Theme	Lead Directorate	Delivery Activity/Milestone	Delivery Date
		Travel Training service to support development towards independent travel.	
Inclusive	Children and Families	Commission the Healthy Child Programme (HCP) , taking into account the developing Family Hubs Model, in order to achieve the best outcomes for children and young people 0-19	Mar 24
Inclusive	Children and Families	Take forward the Change for Children and Young People Plan and support and empower children and young people to develop strong voices, get involved, influence decision-making including through the Birmingham Youth City Board	Mar 24
Inclusive	Children and Families	Further improve school attendance, attainment and achievement , targeting the worst-performing schools, with a strategy working with schools, to improve the educational attainment of poor-performing cohorts including KS1 and KS2 for expected levels of reading writing and maths, increasing attainment of level 2 and 3 qualifications by the age of 10 and targeting poor attendance at primary and secondary	Mar 24
Inclusive	Children and Families	Further develop the school place sufficiency strategy to enable the provision of mainstream specialist and special school places for children and young people with additional educational needs	Mar 24
Prosperous	Children and Families	Implement the Breaking Down Barriers Report including: a) Establish a city-wide, locally developed employment support scheme for young people and businesses b) Enhance and expand the careers service to ensure all young people are equipped with the skills and knowledge to succeed in the modern world c) A one stop hub for youth work placements d) Develop a Good Employment Charter - a business kitemark scheme to support higher employment standards, diverse recruitment, higher pay rates, employee voice at work and youth recruitment	Mar 24

3. IMPROVEMENT AND CHANGE

3A. TRANSFORMATION PROGRAMMES

An overview of major change and transformation programmes that are relevant to the remit of this Committee.

CHILDREN AND FAMILIES

SEND Improvement

- Programme governs the Accelerated Action Plan as requested by DfE in their statutory direction to Birmingham issued in October 2021.

Home to School Transport

- Established to transform the current service through a planned, phased approach. The first phase, Immediate Fixes, has been successfully completed. Phase 2 is now in progress and seeks to develop a safe, stable and sustainable service. It is anticipated that phase 3 will start in 23/24 after the service has been stabilized and strong foundations are in place on which to build transformative change.

Appendix 3: Corporate Priorities, Performance and City Outcomes

3B. DIRECTORATE IMPROVEMENT PLANS AND ACTIVITIES

An overview of improvement plans and activity that are relevant to the remit of this Committee.

CHILDREN AND FAMILIES

Improving Services for Children and Families Plan

- The Improving Services for Children and Families Plan will drive forward both the short and medium-term work to strengthen and improve services for children across the council. The plan brings together all improvement and transformation activity that impacts on children, young people and their families. Colleagues from across the council are working together to deliver the work within the improvement plan.
- This plan sits alongside the directorate's work to develop and deliver the longer-term vision for children and young people in Birmingham.
- The Improving Services for Children and Families Plan is overseen by a cross council executive level Improvement Board, the Board has an Independent Chair, an experienced Director of Children's Services and leader of improvement from another Local Authority.
- The plan reports bi-monthly through transformation programme governance.

3C. OVERVIEW AND SCRUTINY RECOMMENDATIONS

A summary of recent Overview and Scrutiny Committee recommendations that are relevant to the remit of this Committee.

Not applicable for this Committee.



Work Outline / Terms of Reference

Child Criminal Exploitation

Education and Children's Social Care Overview and Scrutiny Committee

Our key question:	How are the Council and Partners working together to reduce the risks of criminal exploitation for young people?
1. How is O&S adding value through this work?	<p>The criminal exploitation of our young people remains a significant concern for the Council and its partners. As the youngest city in the UK, this is a major and also growing safeguarding challenge for us all to face. Birmingham City Council Overview and Scrutiny has previously undertaken an Inquiry - 'We Need to Get it Right Health Check in Tackling Child Sexual Exploitation'. It is critical that Birmingham is ready to meet the changing nature of exploitation. This Inquiry will seek to explore whether there is effective joint working in place to prevent Child Criminal Exploitation now and in the future and identify improvements to make young people safer in the future.</p> <p><u>What is Child Criminal Exploitation?</u> - 'occurs where an individual or group takes advantage of an imbalance of power to coerce, control, manipulate or deceive a child ... The victim may have been criminally exploited even if the activity appears consensual. Child Criminal Exploitation does not always involve physical contact; it can also occur through the use of technology' (County Lines Exploitation: Practice Guidance for Youth Offending Teams and Frontline Practitioners, Ministry of Justice 2019). This definition acknowledges CCE's binary nature and herein one of its many complexities, i.e., a young person may be both a victim and an offender at the same time.</p> <p>CCE often occurs within 'county lines' drug-dealing operations. 'County lines' is a term used to describe gangs involved in exporting illegal drugs within the UK, using dedicated mobile phone lines. They are likely to exploit children to move and store the drugs, and will often use coercion, intimidation, and violence (Criminal Exploitation of Children and Vulnerable Adults: County Lines, Home Office, 2017).</p>



Child Criminal Exploitation

The trauma of young people's experiences is highly likely to have a long-term impact on their future and of future generations. Therefore, an effective and robust partnership approach towards tackling CCE now is critical.

The '[Punishing Abuse](#)' report (Dr Alex Chard, March 2021) was commissioned by the West Midlands Police and Crime Commissioner (WMPCC) and West Midlands Combined Authority (WMCA). This report researched 80 cases of young people known to Youth Offending Teams across the West Midlands (including Birmingham). It identified that:

- Majority are 'educationally disenfranchised leaving (them) vulnerable (to) social exclusion, exploitation, and crime'
- Girls are the most at-risk victims experiencing 'highest levels of abuse and exploitation'.
- Evidence of Criminal Exploitation including through county lines. Nevertheless, there may be higher levels of exploitation as there is a significant chance of under-recording, in particular related to the sexual exploitation of boys.
- 31% of these cases (including all cases relating to girls) had resulted in multi-agency referrals for sexual exploitation.

This research also concluded that known risk factors 'appear to have created a virtual escalator' whereby young people are 'propelled towards crime and the criminal justice system', and which leads to their exploitation and abuse. These risk factors include:

- Poverty
- Physical disabilities or poor mental health
- Family or individual substance misuse
- Known to Criminal Justice system
- Known to Social Care services
- Experienced parental loss
- Family violence
- Family criminality
- Victim or abuse and violence in the community
- Disrupted education
- Special Educational Needs

It highlights 'preventing children from being pushed onto this escalator' as the challenging strategic issue facing organisations.



	<p>In any area, the partnership landscape to address CCE is complex and multi-layered. There are challenges in identifying young people at risk and the appropriate type of responses to deliver. Intervention plans combine responses across statutory and third sector organisations, as well as directly with families. The nature of Child Criminal Exploitation also changes, which puts pressure to plan and adapt. The size of Birmingham increases this complexity and challenge.</p> <p>Birmingham City Council's Council Plan links:</p> <p><u>Grand Challenges</u></p> <p>Opportunities for Children and Young People</p> <p><u>Be Bold Outcomes</u></p> <p>A Bold Inclusive Birmingham</p> <p>A Bold Safe Birmingham</p> <p><u>Corporate Priorities</u></p> <p>8. Support and enable all children and young people to thrive</p> <p>9. Make the city safer</p> <p>10. Protect and safeguard vulnerable citizens</p> <p>A new round of Joint Targeted Area Inspections (JTAI) was announced by the Government in March 2022. These new inspections will consider the multi-agency response to the criminal exploitation of children in Birmingham.</p>
2. What needs to be done?	<p><u>Key Lines of enquiry:</u></p> <ul style="list-style-type: none">a) What is the definition of Child Criminal Exploitation (CCE) being used in the city? If different definitions are being applied by partners, how does this impact upon the effectiveness of joint working?b) What is the current scale and nature of CCE in Birmingham? How has this picture changed over the past four years? What are the projected risks and threats for the future?c) How are organisations informed by evidence-based practice? How do organisations capture 'what works' and 'what doesn't work', and how has this information changed their services? How is Birmingham learning from other areas, and how is this learning being implemented to make a difference?



Child Criminal Exploitation

	<p>d) What is the current partnership strategy in place to address CCE in the city? How is this strategy being supported and delivered through partners? What are the partnership mechanisms for collaboration, and how effective are they? How effective is its governance structure?</p> <p>e) Who are the key statutory organisations and what are their respective roles in addressing CCE? What investment is provided to these organisations, and has this changed over the past four years? What are the current plans for investment to meet future demands?</p> <p>f) What is the role of third sector and community-based organisations involved in tackling CCE? What are the key challenges they face, and what are the solutions they have identified to tackle these challenges? How effective is the cross sector working?</p> <p>g) How does the Council and Partners identify and assess risk for children and young people together for CCE? How are they responding to the challenge in identifying girls and young women as victims? How are the Council and Partners working together to deliver effective interventions when children and young people are likely to be both victims and involved with committing offences at the same time?</p> <p>h) How are the Council and Partners working with families to support children and young people at risk, or involved with CCE? How are schools and partners working together to reduce the risk of school exclusion?</p> <p><u>Equalities Impact</u> This will be monitored throughout the course of the inquiry.</p>
3. What timescale do we propose to do this in?	A report to City Council is proposed for June 2023.
4. What outcomes are we looking to achieve?	<p>Our overall outcome is to:</p> <ol style="list-style-type: none"> 1. Reduce the number of children and young people becoming at risk of Child Criminal Exploitation 2. Improve the effectiveness of partnership working to reduce the risk of Child Criminal Exploitation
5. What is the best way to achieve these outcomes and what routes will we use?	This is an Inquiry proposed by the Education and Children's Social Care OSC and will be undertaken by this Committee. As the Housing and Neighbourhoods OSC has the statutory function as the Crime and Disorder Committee for Birmingham under their



remit, they will be kept informed about the progress of this Inquiry.

Call for Evidence:

- Public – citizens and communities will have the opportunity to provide information as part of a 'Call for Evidence'. We will be particularly focusing on hearing about the experiences and capturing the views of families, who have had children at risk of, or involved with, Child Criminal Exploitation.
- Members – all Members will be invited to provide their views.
- Stakeholders – relevant stakeholders will be identified to provide evidence to the Inquiry. They may be local, regional, or national stakeholders.

Stakeholders invited to provide evidence include:

- Birmingham and Solihull Mental Health NHS Foundation Trust (BSMHFT)
- Birmingham City Council
- Birmingham Safeguarding Children's Partnership (BSCP)
- Birmingham Children's Trust
- Birmingham Community Safety Partnership
- Schools (primary and secondary)
- Forward Thinking Birmingham
- Lived Experiences
- Other Local Authority areas
- Probation Service
- Third sector organisations (Aquarius; Barnardo's; Catch 22; Children's Society; Choices Resettlement; Inside Out Resettlement Services; KIKIT; Lighthouse Consortium; NSPCC; NWG Network; St Giles; Victim Support)
- West Midlands Police
- West Midlands Police and Crime Commissioner
- Violence Reduction Partnership

Task and Finish Group – this will be set up comprising Members from the Education and Children's Social Care Overview. The Task and Finish Group will be chaired by Councillor Des Hughes. This group will monitor the progress of the Inquiry.



Child Criminal Exploitation

Member / Officer Leads

Lead Member:	Councillor Des Hughes (Chair, Inquiry Task and Finish Group)
Membership of Inquiry Task and Finish Group:	Councillors: Shabina Bano; Morriam Jan, Shehla Moledina, and Simon Morrall
Lead Officer:	Amelia Murray, Overview and Scrutiny Manager



Work Outline and Terms of Reference

Children and Young People's Mental Health

Health and Social Care Overview and Scrutiny Committee (Lead) / Education and Children's Social Care Overview and Scrutiny Committee Task and Finish Group

Our key question:	How well are children with a diagnosed mental health condition supported across the mental health system with timely access to appropriate services and what is the service offer and pathways for children and young people in psychological distress without a diagnosed mental health condition to access appropriate support?
1. How is O&S adding value through this work?	<p>"There were an estimated 220,635 children aged 5 to 18 years in Birmingham in 2018, this equates to 19.3% of the total population of the city." (from Children and Young People 2019 Joint Strategic Needs Assessment p.28)</p> <p>"The Mental Health of Children and Young People Survey 2017 finds that nationally, one in eight children and young people aged 5 to 19 years have at least one mental disorder. The prevalence of mental health problems rises with age, with 9.5% of children age 5-10 years experiencing a mental disorder compared to 16.9% of those aged 17-19 years old*. Emotional disorders are the most prevalent type of mental health problem experienced by those aged 5-19 years old (8.1% of all children), followed by behavioural disorders (4.6%) and hyperactivity disorders (1.6%). In Birmingham the estimated prevalence of mental health disorders in children and young people (5-16 years) is 10.3% (England 9.2%, West Midlands 9.7%)</p> <p>Mental health problems affect about 1 in 10 children and young people. They include depression, anxiety and conduct disorder, and are often a direct response to what is happening in their lives. Alarming, however, 70% of children and young people who experience a mental health problem have not had appropriate interventions at a sufficiently early age" (from Children and Young People 2019 Joint Strategic Needs Assessment p. 34/35)</p> <p>The data above refers to the period prior to the COVID-19 pandemic. The information below highlights the impact the pandemic has had on CYP mental health at a national level.</p>



Children and Young People's Mental Health

Mental Health Survey for Children and Young People, 2021 (MHCYP 2021), wave 2 follow up was based on 3,667 children and young people who took part in the MHCYP 2017 survey, with both surveys also drawing on information collected from parents. The survey explored the mental health of children and young people in February/March 2021, during the Coronavirus (COVID-19) pandemic and changes since 2017. Key finding from the survey were:

- Estimated rates of mental disorders have increased since 2017; in 6 to 16 year olds from one in nine (11.6%) to one in six (17.4%) and in 17 to 19 year olds from one in ten (10.1%) * to one in six (17.4%) Rates in both age groups remained similar between 2020 and 2021
- 10.6% of 6 to 16 year olds missed more than 15 days of school during 2020 Autumn term. It is estimated that children with a probable mental issue were twice as likely to have missed this much school (18.2%) as those unlikely to have a mental issue (8.8%)
- 39.2% of 6 to 16 year olds had experienced deterioration in mental health since 2017, and 21.8% experienced improvement. Among 17 - to 23 year olds, 52.5% experience deterioration, and 15.2 % experienced improvement.

Information published by the Health Foundation in February 2022 set out:

- After schools closed due to COVID-19 and ways of accessing GPs changed, new referrals to CYPMHS fell sharply (by 35% in April 2020 compared with the year before). However, about a year later, these reached a new high of 100,000 per month.
- In 2021, 24% more patients were in contact with CYPMHS compared with 2020, and 44% more than in 2019 (based on the January to September period) This includes patients waiting to be seen, suggesting CYPMHS may be struggling to meet demand **
- Data on waiting times for CYPMHS are not routinely published apart from certain services such as eating disorders, where fewer than half of those younger than 18 were seen within the target times in 2021.
- There are signs that the CYPMHS workforce is growing in line with young people in contact: both increased by about 40% between January 2019 and April 2021.

Key points from the Health Foundation's Networked Data Lab about Children and Young People's mental health highlighted three key areas:

- Rapid increases in mental health prescribing and support by GPs.
- The prevalence of mental health issues among adolescent girls and young women
- Stark socioeconomic inequalities across the UK

Taking a systems approach across health, children's social care, education and third sector providers the Inquiry will scrutinise the services and planning of partners to ensure the resources for mental health across the system are used effectively and efficiently to meet the needs of young people with mental health needs.

*During the Inquiry clarification will be sought on the different prevalence rates reported.

**The Inquiry will seek to understand how services in Birmingham meet demand.



	<p>Grand Challenges addressed:</p> <ul style="list-style-type: none"> • Health and well being • Opportunities for children and young people <p>Corporate Plan Priorities:</p> <ul style="list-style-type: none"> • A city that is Healthy and Inclusive
<p>2. What needs to be done?</p>	<p>Key questions:</p> <ul style="list-style-type: none"> • What is the definition of mental health and how does this affect the demand for mental health services? How is this communicated to the public and service users? • What is the known demand for CYP mental health support and what has been the impact of Covid on mental health of children and young people in Birmingham? Which mental health issues / service have seen the greatest increase in demand over the last 4 years? • What funding is available for mental health services and how does this compare to other areas e.g. core cities? • What are the referral routes, assessment processes and support for CYP with psychological distress and those with a diagnosed mental health condition? • What are the expectations of children and young people and their parents and carers in relation to their mental health need? • What support and advice is available to parents / carers? • How are the mental health needs of children and young people in care and care leavers being met? • How well are the needs of children and young people with high end acute mental health met? What are the implications of responding to CYP in crisis on the capacity in the mental health system? • How do services meet the needs of those who experience the disadvantage / barriers to services / are most vulnerable? (consider case studies / patient stories) • What can we learn from other areas? Examples of best practice • Work force planning to enable continuity of care – NHS, Social Care, Education and third sector. <p>Equalities Impact This will be considered at the first meeting of the Task and Finish Group monitored throughout the course of the inquiry.</p> <p>Evidence to be requested from: All Members Cabinet Members Public Call for evidence Birmingham Women's and Children's NHS Foundation Trust / Provider Collaborative (Commissioner of Tier 4 beds) Forward Thinking Birmingham (FTB) (HASC Committee October) Integrated Care System</p>



Children and Young People's Mental Health

	<p>Primary Care / GPs / Primary Care Networks Birmingham City Council Education and Children's Services Birmingham Children's Trust (Education and Children Social Care Overview and Scrutiny Committee 30/11/22) Acute Trust – UHB University Hospitals Birmingham NHS Foundation Trust Schools (including NHSE Mental Health Support Team Pilots in Bham schools) Birmingham Safeguarding Children's Partnership (Quality Assurance Group) (Independent Chair attending Education and Children's Social Care Overview and Scrutiny Committee 30/11/22) Third Sector Providers Mentally Healthy City Forum Lived Experience / views of YP – Census / Healthwatch Report / Fit for Brum (FTB) Previous consultation / engagement Public health Birmingham Community Health Trusts Samaritans MIND Papyrus LGBT Switch Birmingham LGBT Black Mental Health Foundation – Young Black Minds Women's Aid West Midlands Police West Midlands Ambulance Service Research from Universities / National Mental Health organisations.</p> <p>Committee Meetings planned in work programmes: Forward Thinking Birmingham attending Health and Social Care OSC 18.10.22 Birmingham Children's Trust and Birmingham Safeguarding Children's Partnership attending Education and CSC OSC October 22</p>
3. What timescale do we propose to do this in? (TBC)	<p>Report to City Council in June 2023.</p> <p>The Task and Finish Group will review the terms of Reference mid way through the evidence gathering process to decide if the scope should be changes to focus on specific issues based on the initial evidence received.</p>
4. What outcomes are we looking to achieve?	<p>Develop recommendations to Cabinet and ICS that will:</p> <p>Improve access and ensure clear multi-agency pathways / referral routes for CPY with mental health needs.</p> <p>Ensure effective and efficient use of resources across the mental health system and develop the capacity of the mental health system to respond to need and consider work force planning.</p>

*During the Inquiry clarification will be sought on the different prevalence rates reported.

**The Inquiry will seek to understand how services in Birmingham meet demand.



5. What is the best way to achieve these outcomes and what routes will we use?	To ensure that there is involvement of members from the Health and Social Care OSC and the Education and Children's Social Care OSC a task and finish group has been established to undertake this inquiry. The Inquiry will gather evidence through reports to Committee meetings (all members of the Task and Finish Group will be invited for this item) and Task and Finish Group meetings
--	---

Member / Officer Leads

Lead Member:	Cllr. Brown Chair of Task and Finish Group Cllr. Tilsley, Deputy Chair of Task and Finish Group
Membership of Task and Finish Group	Cllrs: Brown, Hartley, Moore, Tilsley, Bermingham, Pritchard, Morrall
Lead Officer:	Fiona Bottrill

