

OurFuture_____CityPlan

CENTRAL BIRMINGHAM 2040

Shaping Our City together

A Growing City



- 150,000 additional people
- 89,000 additional homes needed.
- Current supply of 65,000 of which 19,400 should be affordable
- Over 100,000 new jobs needed
- 407ha of employment land required

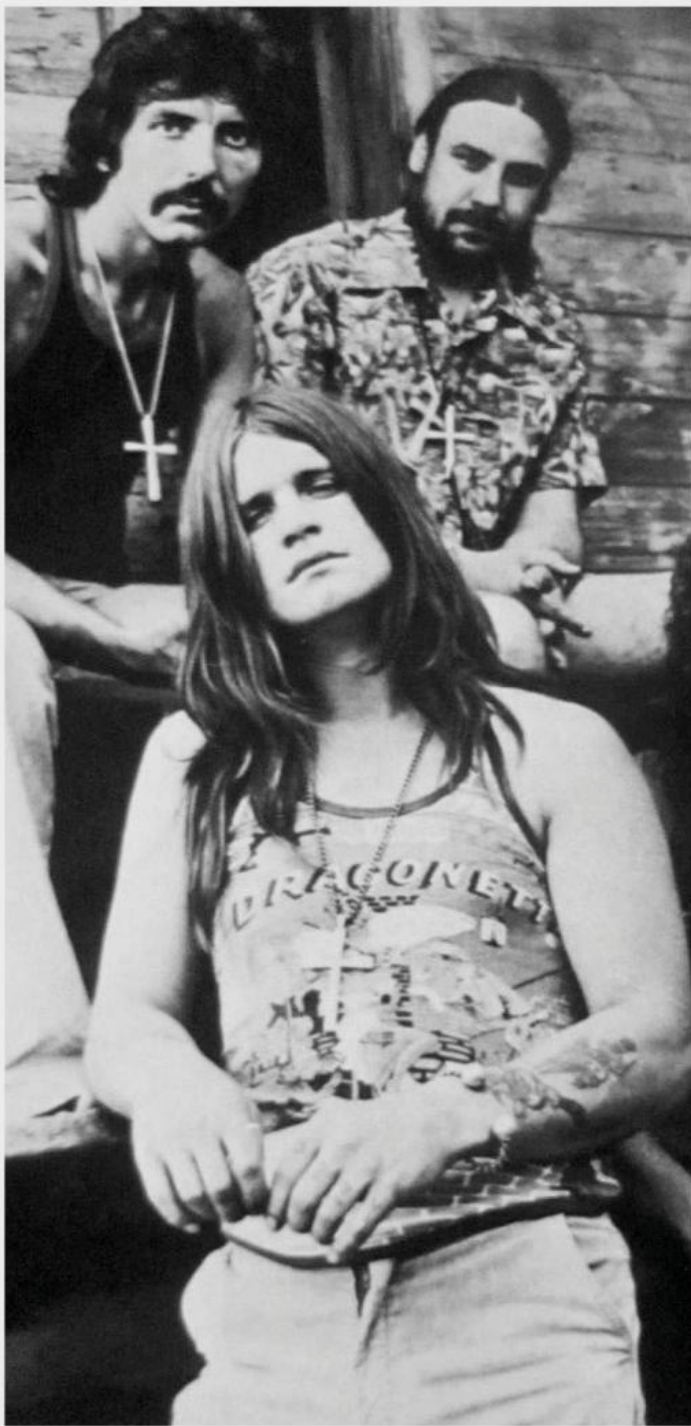
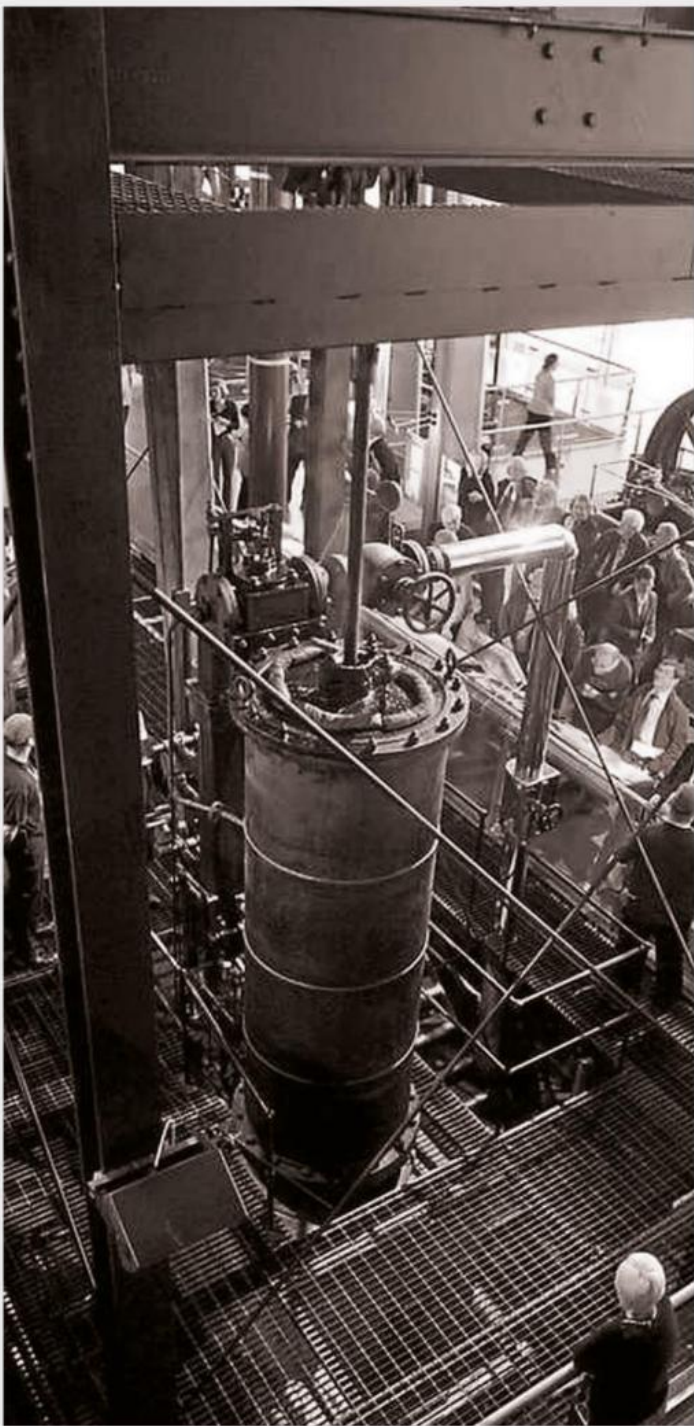
Confidence in Birmingham



- Prior to Covid growth at twice the rate of London and three times the UK average.
- Significant investment in infrastructure, HS2 and Metro
- Host city for 2022 Commonwealth Games
- UK's best performing region for foreign direct investment (2020/21), 38 projects secured creating 2,263 new jobs
- Attracted major investment projects including Department of Transport and Goldman Sachs
- More new business start-ups than any other city outside London



OUR HISTORY IS ONE OF
innovation AND LEADERSHIP



A photograph of Curzon Street Station, featuring a large, arched wooden roof structure. The station is filled with people, and the name 'CURZON STREET STATION' is visible on the building facade. The image has a warm, reddish-orange tint.

OUR NEED TO
innovate IS PART OF OUR DNA

CURZON STREET STATION



ICC

Construction started 1987
Opened (by the Queen)
12 June 1991



BRINDLEY PLACE

Construction started 1991
Phase one complete in 1994
Continues to grow



ROTUNDA REDEVELOPMENT

Renovated between
2004 and 2008



NEW STREET STATION REDEVELOPMENT

Reopened in 2015

1987

1991

2000

2003

2008

2013

2015

SYMPHONY HALL

Opened (by the Queen)
12 June 1991



BIRMINGHAM ARENA

Opened October 1991



NEW BULLRING

Rebuilt between
2000 and 2003



BIRMINGHAM CITY LIBRARY

Construction started 2009
Opened in 2013





CITY CENTRE MASTERPLAN
Sept 2010

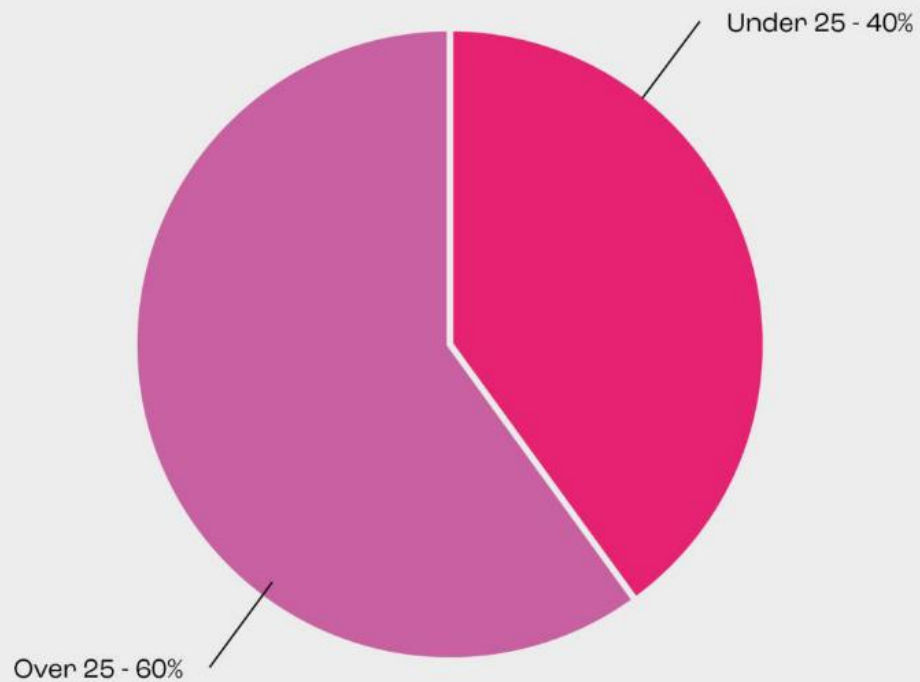


‘WE WILL MOVE FORWARD’

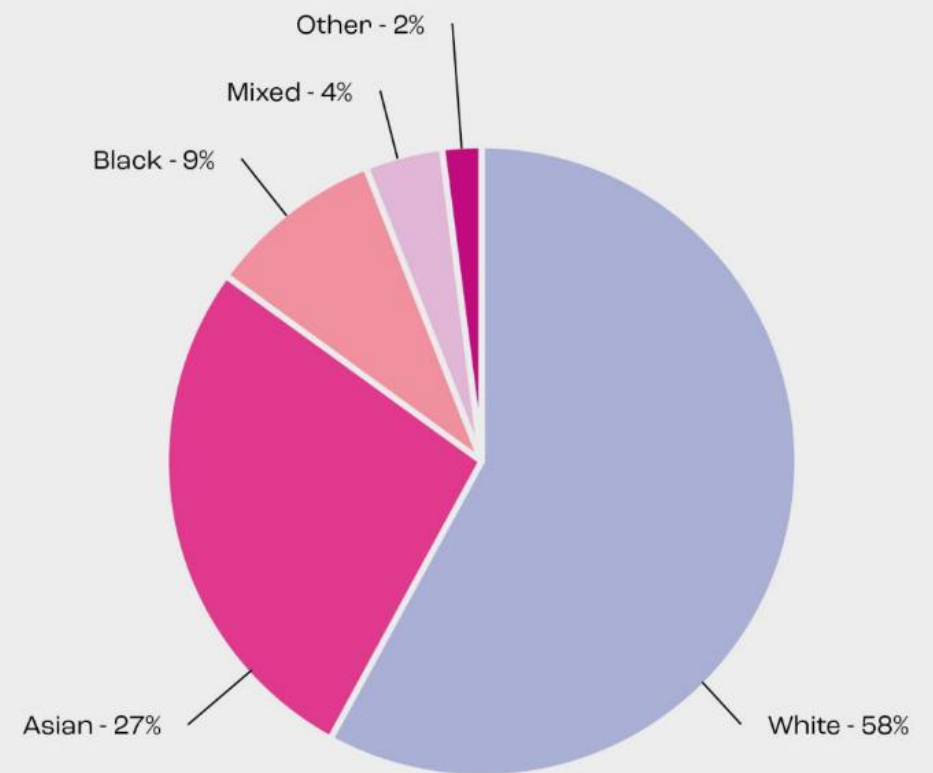


BIRMINGHAM IS A CITY OF
energy AND OPPORTUNITY

young...



... and diverse



SHAPING BIRMINGHAM'S FUTURE





OUTWARD

The background is a dark, out-of-focus scene featuring several bright, circular bokeh lights in shades of red, orange, and yellow. These lights are scattered across the upper half of the image, creating a sense of depth and light. The lower half of the image is darker, with some faint, blurred light trails or streaks visible.

WE HAVE A STRONG OUTWARD
LOOKING BLUEPRINT FOR OUR *future*



An aerial night view of a city, likely New York City, showing a grid of streets and buildings. A prominent red line, possibly a subway line, runs diagonally across the image. A large bridge with multiple lanes is visible in the foreground, illuminated with blue and white lights. The text "OUR PLAN IS BROAD, ambitious AND COMPREHENSIVE" is overlaid on the image, with "ambitious" in a cursive script and the other words in a bold, sans-serif font.

OUR PLAN IS BROAD,
ambitious AND COMPREHENSIVE



A large group of people are sitting and lying on a green lawn in front of modern buildings. The scene is a public space, possibly a university campus or a park, with many people engaged in various activities. The text is overlaid on the center of the image.

IT'S A PLAN DRIVEN
BY CLEAR *principles*

GREEN
GREEN
GREEN
GREEN

EQUITABLE
EQUITABLE
EQUITABLE
EQUITABLE
EQUITABLE
EQUITABLE
EQUITABLE
EQUITABLE
EQUITABLE

LIVABLE
LIVABLE
LIVABLE
LIVABLE
LIVABLE
LIVABLE
LIVABLE
LIVABLE
LIVABLE

DISTINCTIVE
DISTINCTIVE
DISTINCTIVE
DISTINCTIVE
DISTINCTIVE
DISTINCTIVE
DISTINCTIVE
DISTINCTIVE
DISTINCTIVE

green

GREEN
GREEN
GREEN
GREEN
GREEN
GREEN
GREEN
GREEN
GREEN
GREEN

equitable

livable

distinctive



CITY OF
CENTRES



CITY OF
GROWTH FOR ALL



CITY OF
NATURE



CITY OF
LAYERS



CITY OF
CONNECTIONS



CITY OF
KNOWLEDGE AND
INNOVATION



01

City of Growth for all

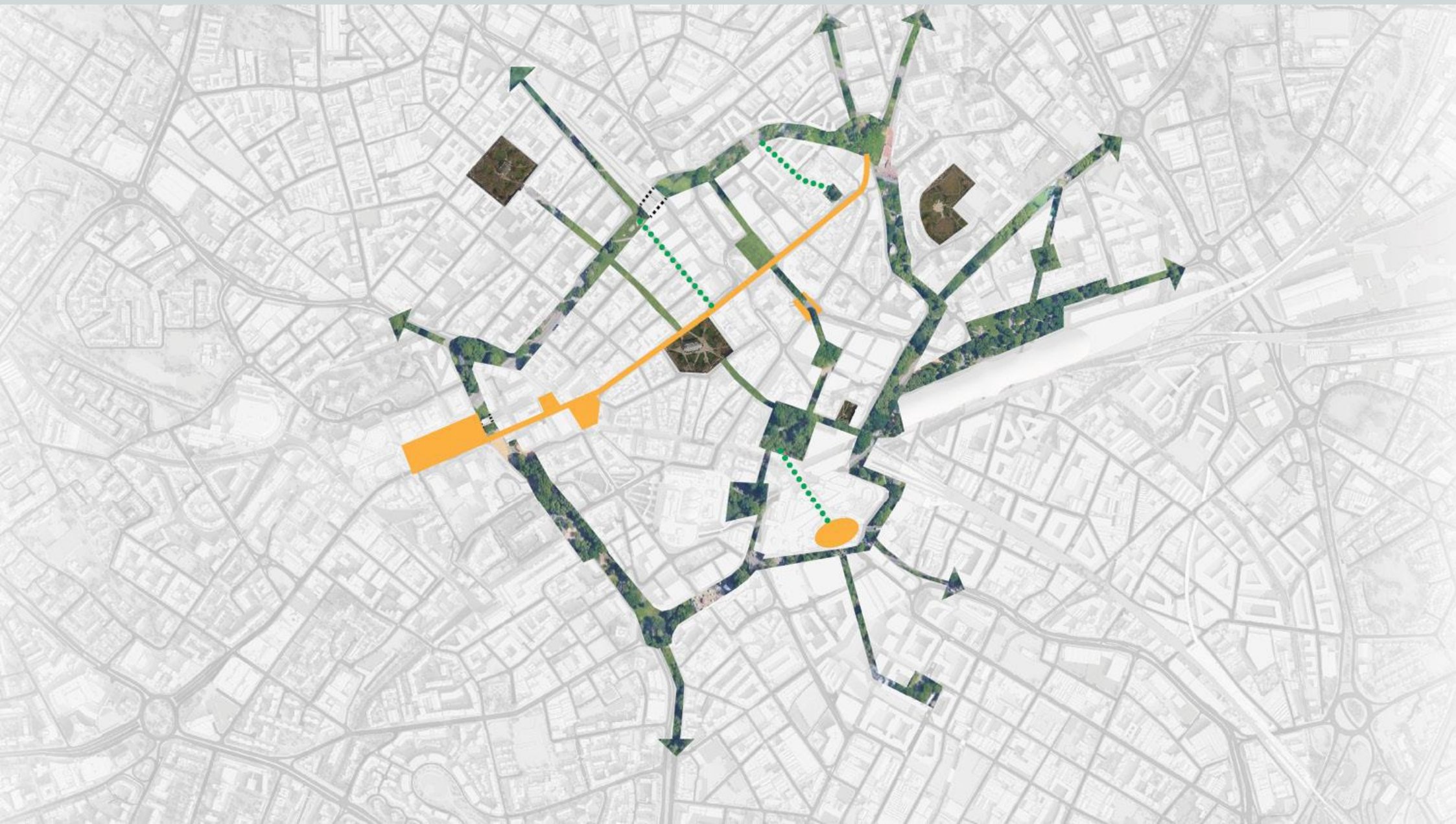




02

City of Nature



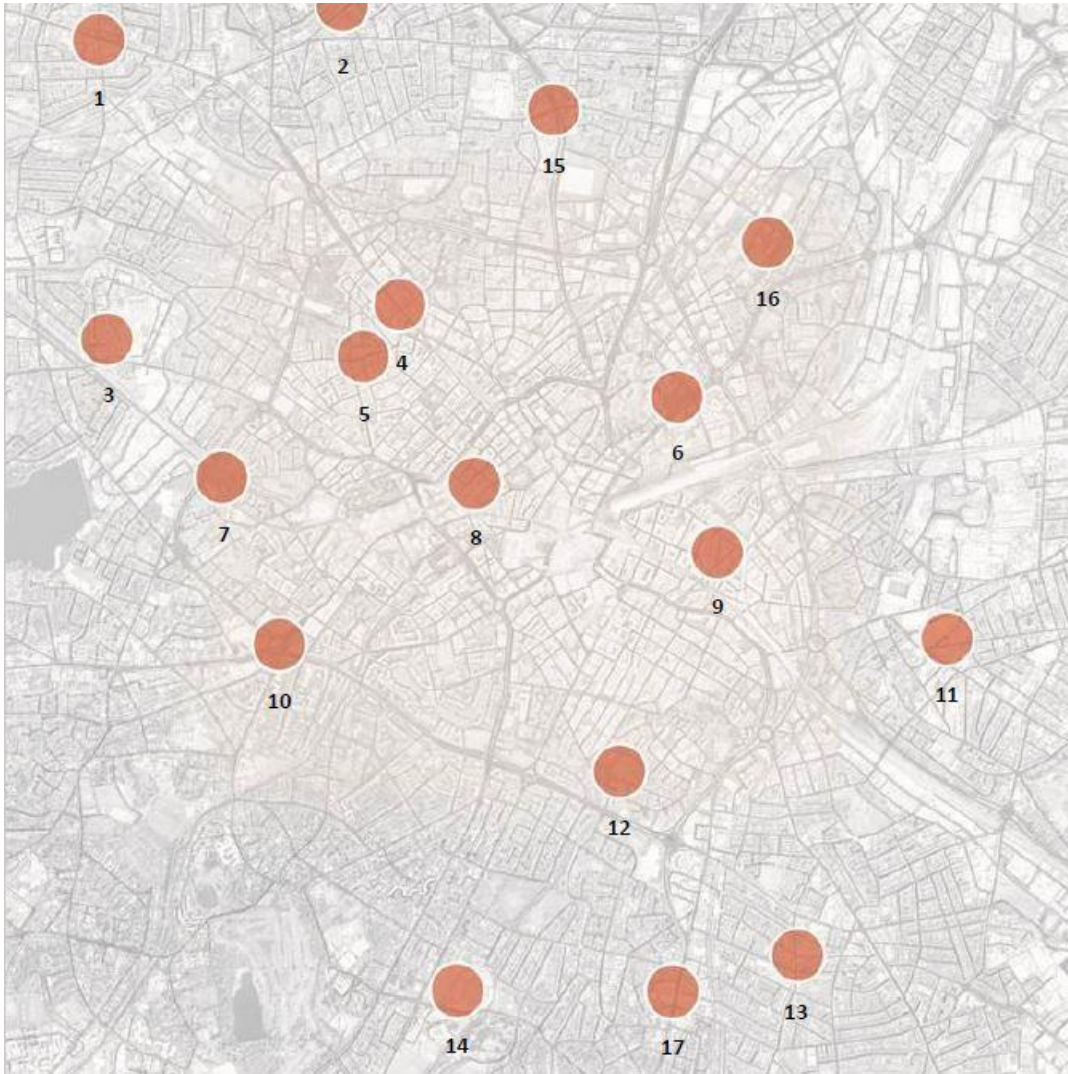




03

City of Centres





City of Centres

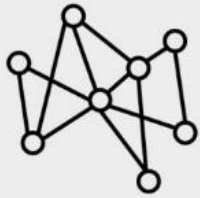
1. Soho Road
2. Lozells
3. Ickneild
4. Great Hampton Street
5. Jewellery Quarter Big Pegg
6. South New Town
7. Ladywood
8. Broad Street
9. Creative Cluster
10. Five Ways
11. Coventry Road
12. Highgate
13. Ladypool Road
14. Edgbaston
15. Newtown
16. Bloomsbury
17. Balsall Heath



04

City of Connections





FIBRE



5G



TRAMS



TRAINS



BIKES



ROADS



WALKING



Connected City Networks

Future High Capacity Routes

- Connections to centres and growth areas
- Transformation of existing highway infrastructure for active mobility
- Dedicated uninterrupted routes
- Relationship with City of Nature





05

City of *Knowledge and Innovation*



UNIVERSITY OF
BIRMINGHAM



BIRMINGHAM CITY
University



Aston University
BIRMINGHAM UK



UCB
University College Birmingham



Newman
University
BIRMINGHAM



BMet
Inspiring futures, realising dreams.



SOUTH & CITY COLLEGE
BIRMINGHAM

Bournville
COLLEGE

cadbury college



ADVANCED
TRANSPORT &
INFRASTRUCTURE
NATIONAL COLLEGE



SILICON CANAL

CUSTARD FACTORY

Innovation Birmingham

The Health Tech Catalyst

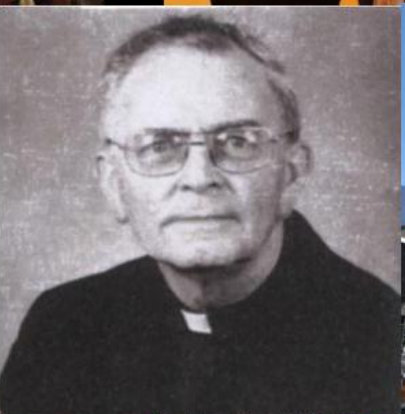




06

City of Layers





WHERE ARE YOU FROM?



SHAPING THE OPPORTUNITIES

Our Aspirations:
Birmingham Greenway



Our Aspirations:
Park Birmingham



Our Aspirations:
Cultural Quarter



Our Aspirations:
Millennium Place







SHAPING BCC LAND ASSETS





NEXT STEPS

An aerial night photograph of London, showing a dense urban landscape with numerous illuminated buildings. The Shard, a tall, slender skyscraper, stands out prominently in the center of the frame. In the foreground, a large, ornate building with a domed roof and arched windows is visible, surrounded by trees and other structures. The overall scene is a mix of modern and historic architecture under a dark sky.

OFCP – Central Renewal Areas

Project Charters

January 2022

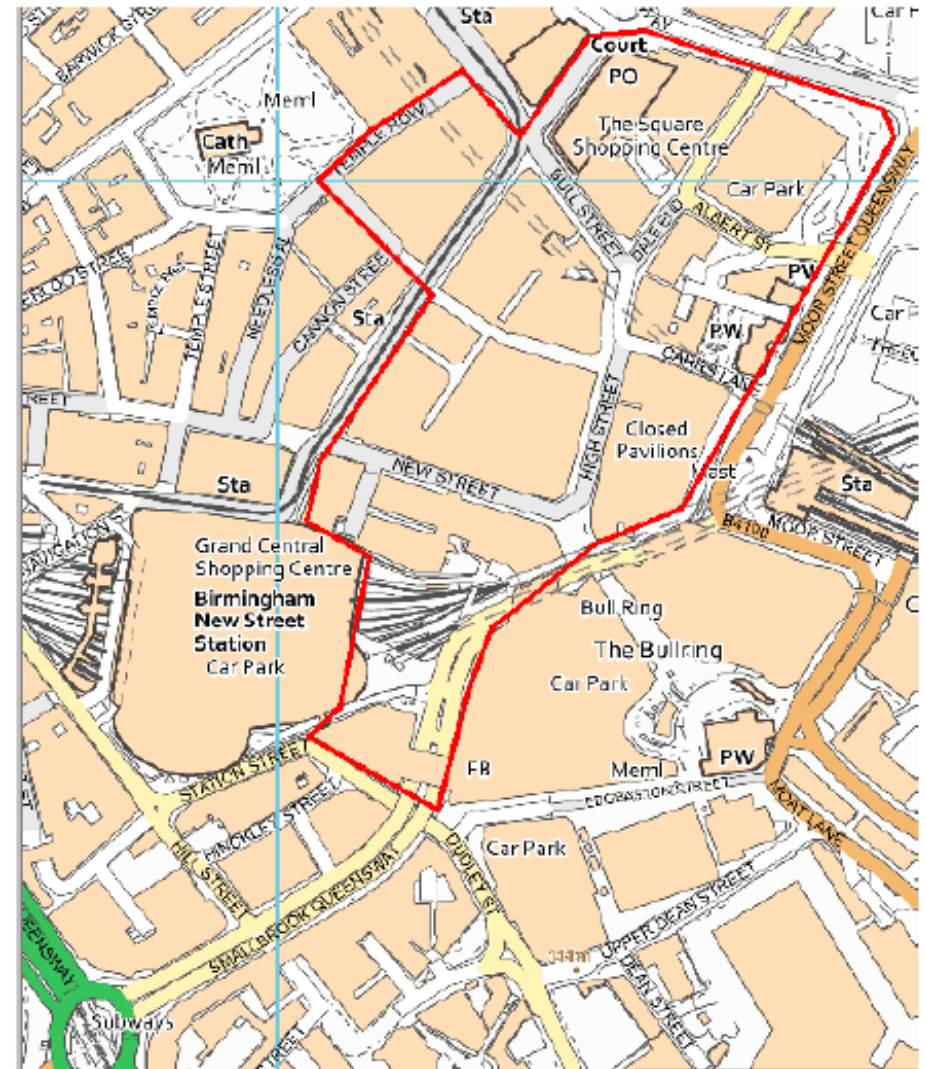
Central Renewal Areas

- 8 CRAs – all different in scale, opportunity, purpose and in timescales.
- Proposals that deliver OFCP's 6 City Themes.
- Deliberately go “beyond the ring road”.
- Focus for change and targeting intervention.
- Identifying growth potential
- Infrastructure requirements
- Routes to Delivery



Park Birmingham

- Martineau Galleries
- Big Top/Rackhams/Martineau Place/Carrs Lane
- New Street Station & BullRing Link'



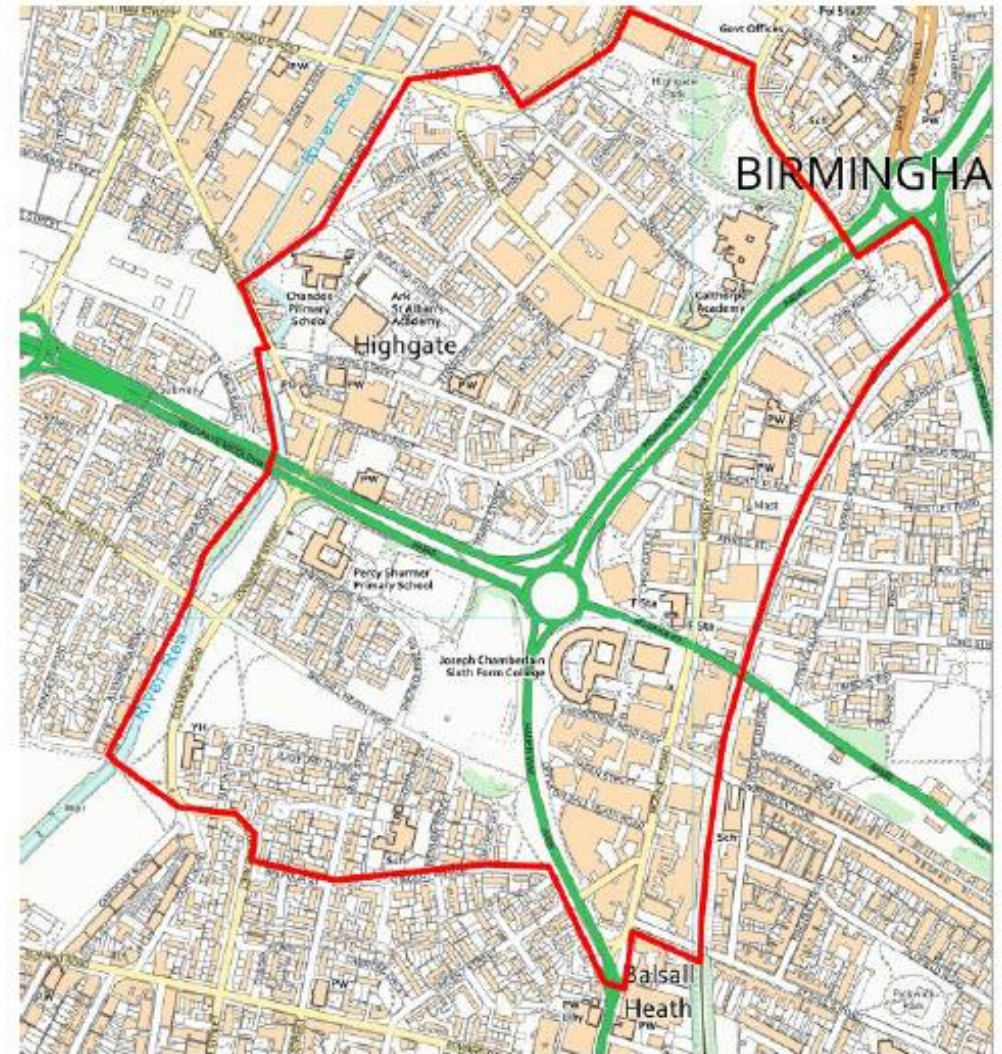
Hockley & St Georges

- Soho / Gib Heath
- Hockley Flyover & environs
- St Georges Estate
- Gun Quarter & Newtown Core Employment



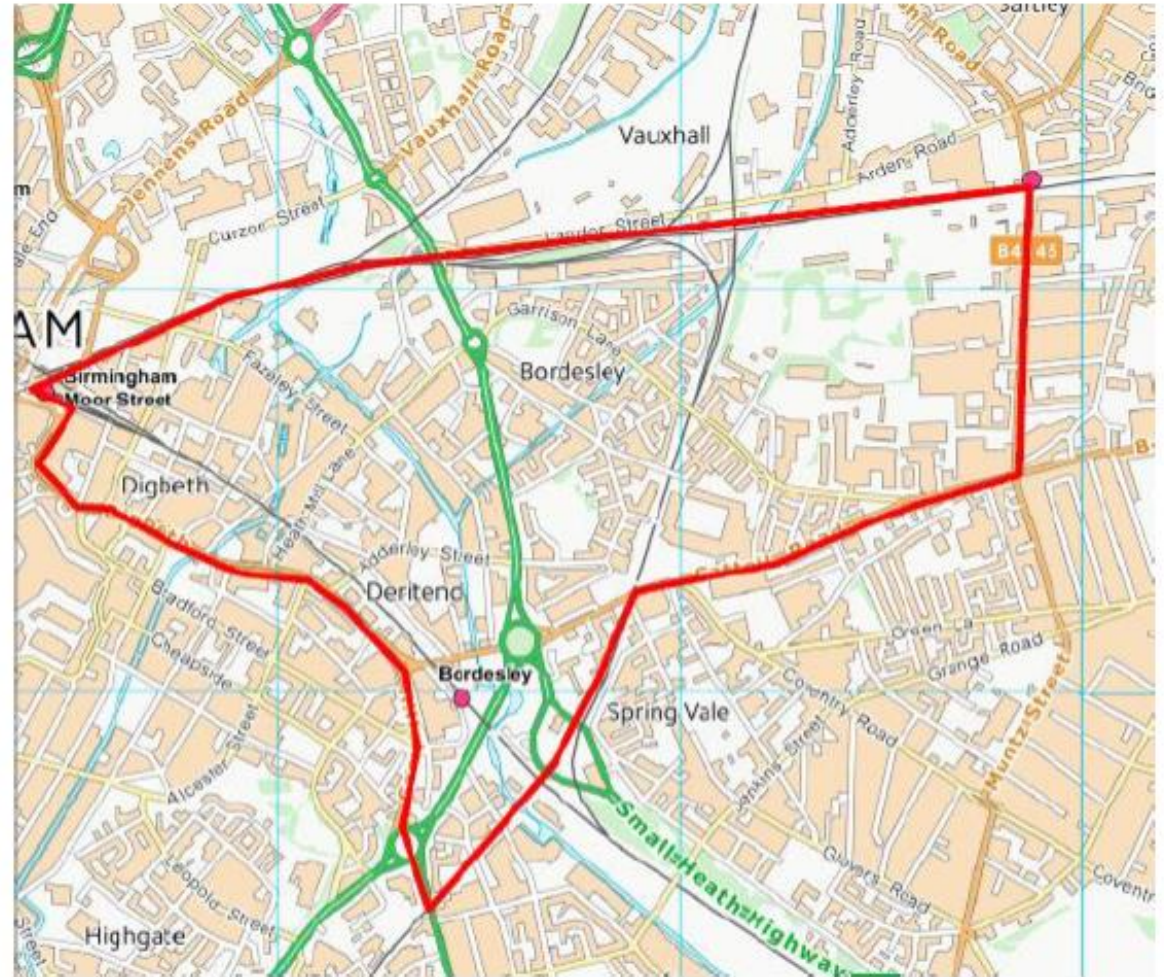
Highgate & Balsall Heath

- Highgate Estate
- Balsall Heath – central area
- Moseley Road North
- Moseley Road South



Digbeth & Bordesley

- EZ sites - Oval / Stoford / Major PAs.
- Homes England sites
- AAP sites – “Wheels”
- Spring Vale sites – BCC interests
- Bordesley Central



Knowledge Quarter & Nechells

- HS2 Curzon Station Opportunities
- Millennium Point / Jennens Road
- Aston Uni, BCU & Bruntwood masterplans.
- Nechells Estates – BCC assets
- Ring-road industrial uses
- Canal corridor sheds and gas works



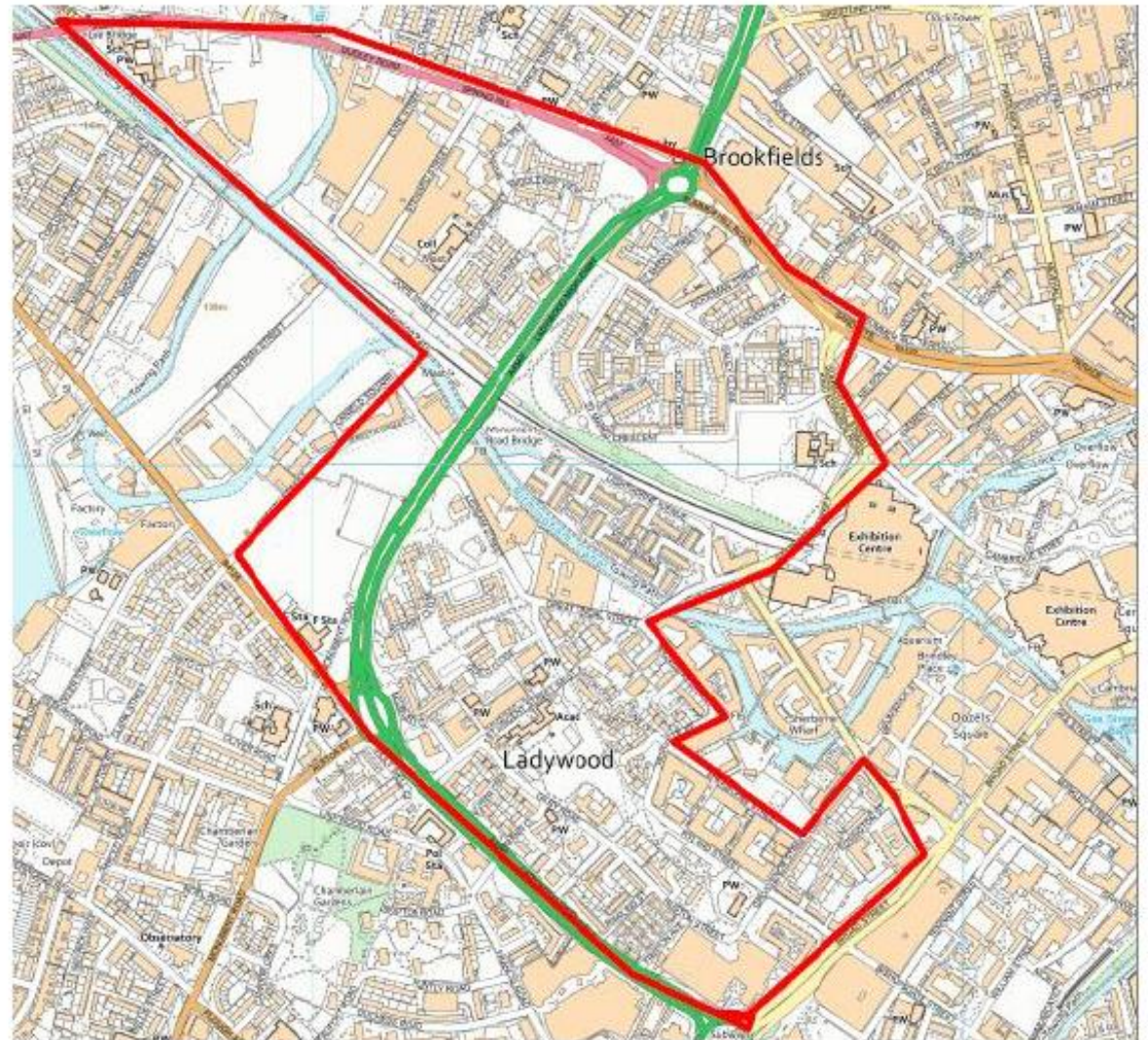
Rea Valley

- Rea Valley SPD Area (minus Highgate)



Ladywood

- Ladywood Estate
- Broad Street Corridor
- Dudley Road/Spring Hill Corridor



A MATTER OF
OPINION

So, Will you join us?

