

# Birmingham Early Help and Safeguarding Partnership

January 2016

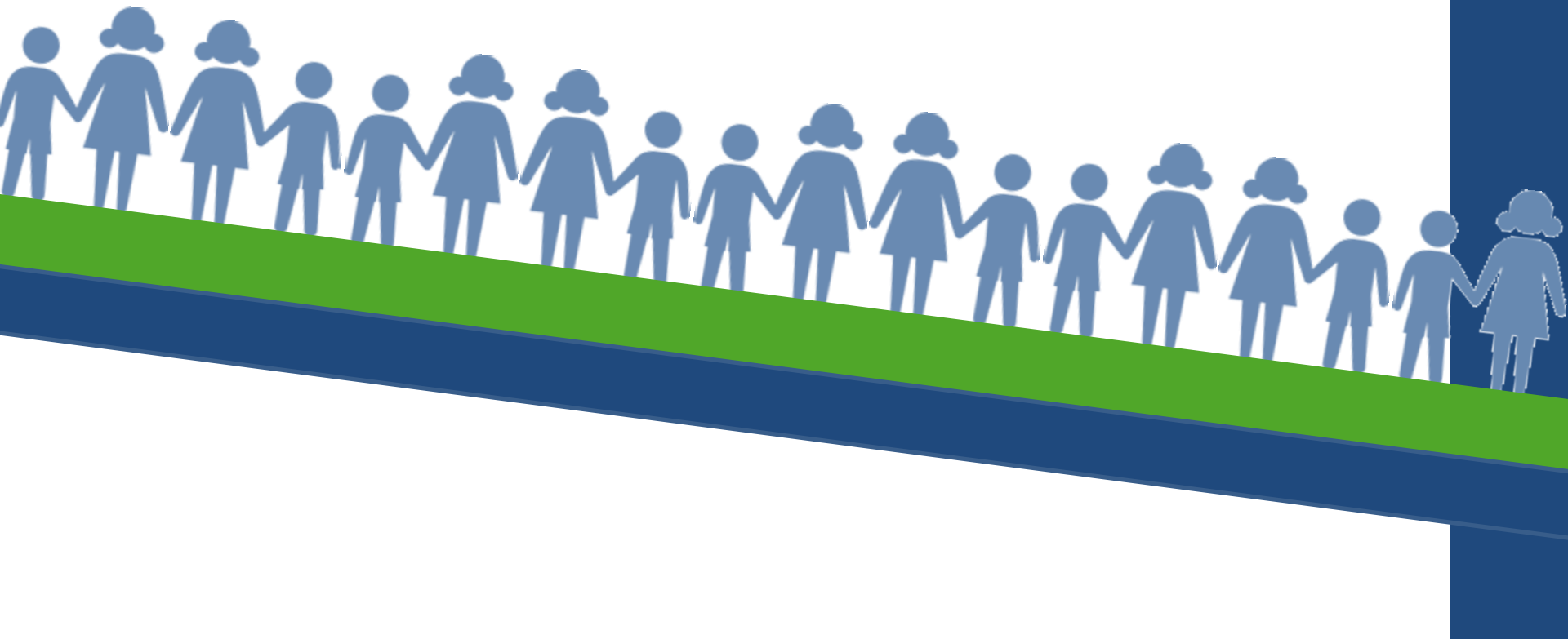


# The Partnership

- Introductory meeting in July 2015
- Terms of Reference in place
- The Early Help Strategy identified 7 priorities for the development of Early Help in Birmingham
- Workstreams have been set-up for each of these priorities
- Good range of partners in attendance at Partnership meeting and in the workstreams
- Workstreams have defined the deliverables that will develop Early Help and Safeguarding
- BEHSP overseeing the workstreams to ensure synergy and dependencies
- BEHSP is responsible for Early Help, Think Family and MASH



# WORKSTREAM OVERVIEW



Workstream	Priority	Themes		
<b>Outcomes</b>	Develop a set of performance indicators that measure outcomes for children and their families.	Map the governance and responsibility and ownership for outcomes and their performance measures	Identify key performance indicators and measures to demonstrate priority areas and outcomes for vulnerable children	Develop and review outcomes and performance measures for Think Family and MASH
<b>Strengthen and clarify the Early Help and Safeguarding front door pathway</b>	Develop online Early Help Information advice and guidance and service directory for families and professionals	Develop online partnership information and advice for families to enhance self-help	Develop online partnership information for professionals	Review other methods of offering partnership advice to families and develop an online Service Directory
	Effective, streamlined front Door, supporting access to Early Help and Safeguarding services	Review of purpose and function of Children's Information Service and streamlining the pathways into level 2, 3 and 4	Align the level 3 function to the MASH front door.	Improve locality access to multi-agency information
<b>Assessment and Interventions</b>	Developing and implementing an early help assessment and a suite of Early Help interventions.	Develop an effective online Early Help Assessment and integrated support plan	Develop a set of early help effective interventions and distance travelled tools	Evidencing working in partnership with children young people and their families
<b>Information Sharing</b>	Develop speedy and effective process for sharing information between agencies	Develop effective Information Sharing arrangements	Make better use of IT systems and portals through aligning information across the partnership	Explore using data to forecast needs and demands
<b>Localities and Pathways</b>	Develop and define the Family support offer based on Right Service Right Time	Ensure a consistent Think Family and family support offer in each locality	Define the family support offer at Levels 2, 3 & 4	Review Pathways into Services
	Redefine partnership working at a locality level	Review Team around the Family panels and step-up, step-down arrangements	Map and develop integrated partnership working in each area, exploring co-location opportunities.	Design Early Help pathways for vulnerable groups
<b>Workforce</b>	Develop a skilled and competent workforce across the partnership	Implement the Right Service Right Time training	Develop tools to enhance effective practice	Design Early Help multi-agency training embedding evidenced based approaches
<b>Commissioning</b>	Develop a joint commissioning Framework across early help	Refresh of Joint Strategic Needs Assessment for Early Help	Review of current partnership provision to identify gaps and opportunities	Influence a strategic approach across the partnership to incorporate Early Help principles.



# Workstream Overview, Priorities and Themes

July 2015

# Our current work

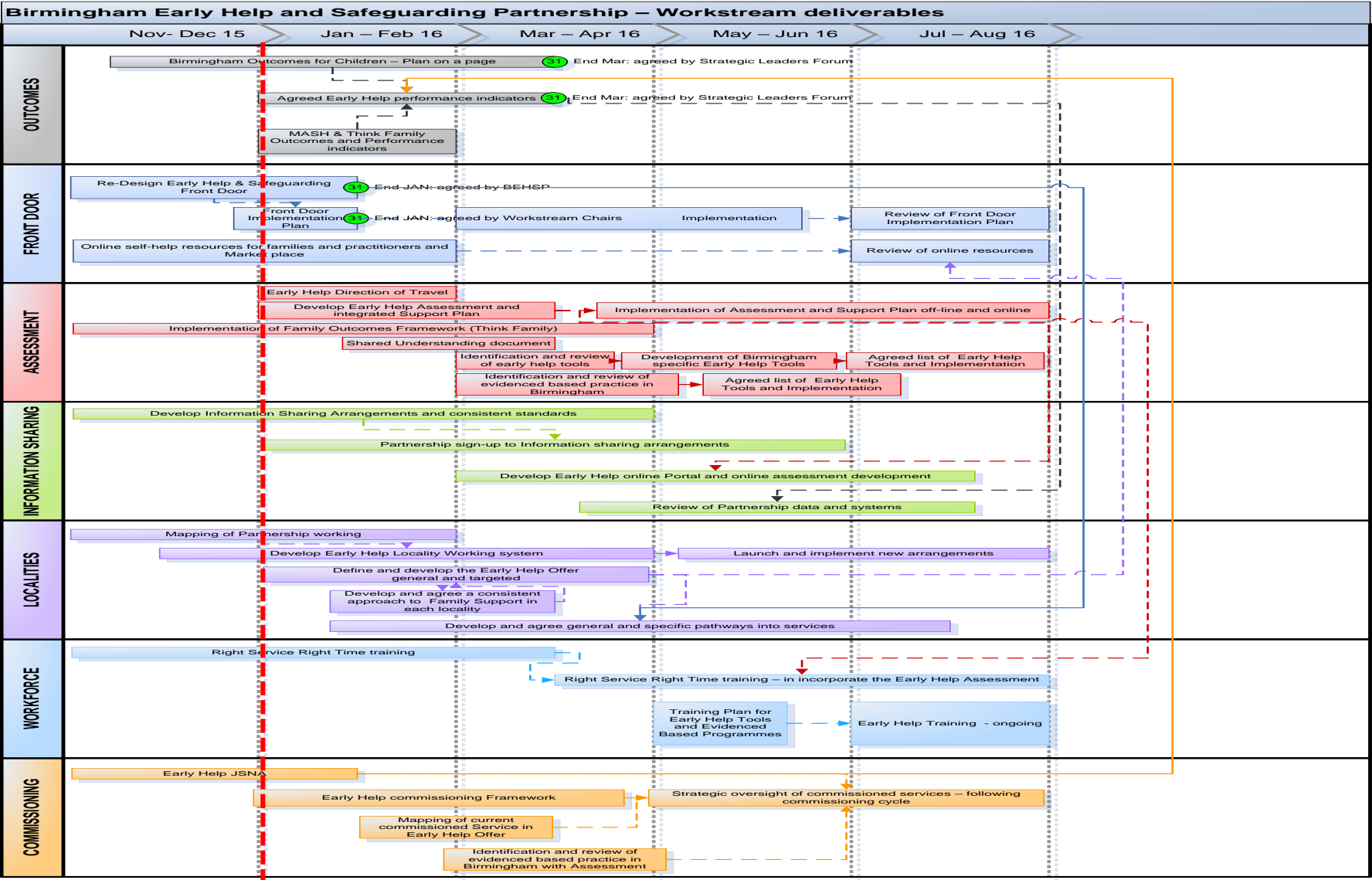
- Outcomes Workstream
  - Developing shared Outcomes plan on a page for Birmingham's Children
  - Developing MASH & Think Family Outcomes and performance measures
- Front Door Workstream
  - Developing online Early Help
  - Re-design Early Help and Safeguarding Front Door
- Assessment Workstream
  - Developing Early Help Assessment and Tools
  - Examining different options and learning from good practice



# Our current work cont...

- Information Sharing
  - Developing Information sharing framework
  - Looking at how technology can help Early Help and safeguarding
- Localities
  - Designing new ways of working in local areas
  - Defining the Early Help offer to families
  - Planning launch event (June 2016)
- Commissioning
  - Developing Birmingham Early Help JSNA
  - Developing mapping work of Early Help commissioned work
- Workforce – jointly with BSCB
  - Will look at culture change and training to support the work developed by the Workstreams





04/01/16

**DRAFT** BEHSP Workstream deliverables v0.1

# Draft Delivery Plan

January 2016



# BEHSP

- Meet monthly to look at the work of the workstreams, Think Family and MASH.
- Governance reporting to Strategic Leaders Forum and Birmingham Safeguarding Children's Board
- How can you help us?
  - All Partnerships and individual agencies agreeing the strategic priority outcomes for children and working towards these in a co-ordinated approach.

