

Report of:	Cabinet Member for Inclusion and Community Safety
To:	Neighbourhood and Community Services Overview and Scrutiny Committee
Date:	19 November 2015

Progress Report on Implementation: Working with Communities to Prevent Relationship Violence

Review Information

Date approved at City Council:	14 April 2015
Member who led the original review:	Councillor Miriam Khan
Lead Officer for the review:	Mashuq Ally
Date progress last tracked:	n/a

1. In approving this Review the City Council asked me, as the appropriate Cabinet Member for Inclusion and Community Safety, to report on progress towards these recommendations to this Overview and Scrutiny Committee.
2. Details of progress with the remaining recommendations are shown in Appendix 2.
3. Members are therefore asked to consider progress against the recommendations and give their view as to how progress is categorized for each.

Appendices

1	Scrutiny Office guidance on the tracking process
2	Recommendations you are tracking today
3	Recommendations tracked previously and concluded

For more information about this report, please contact

Contact Officer:
Title:
Telephone:
E-Mail:

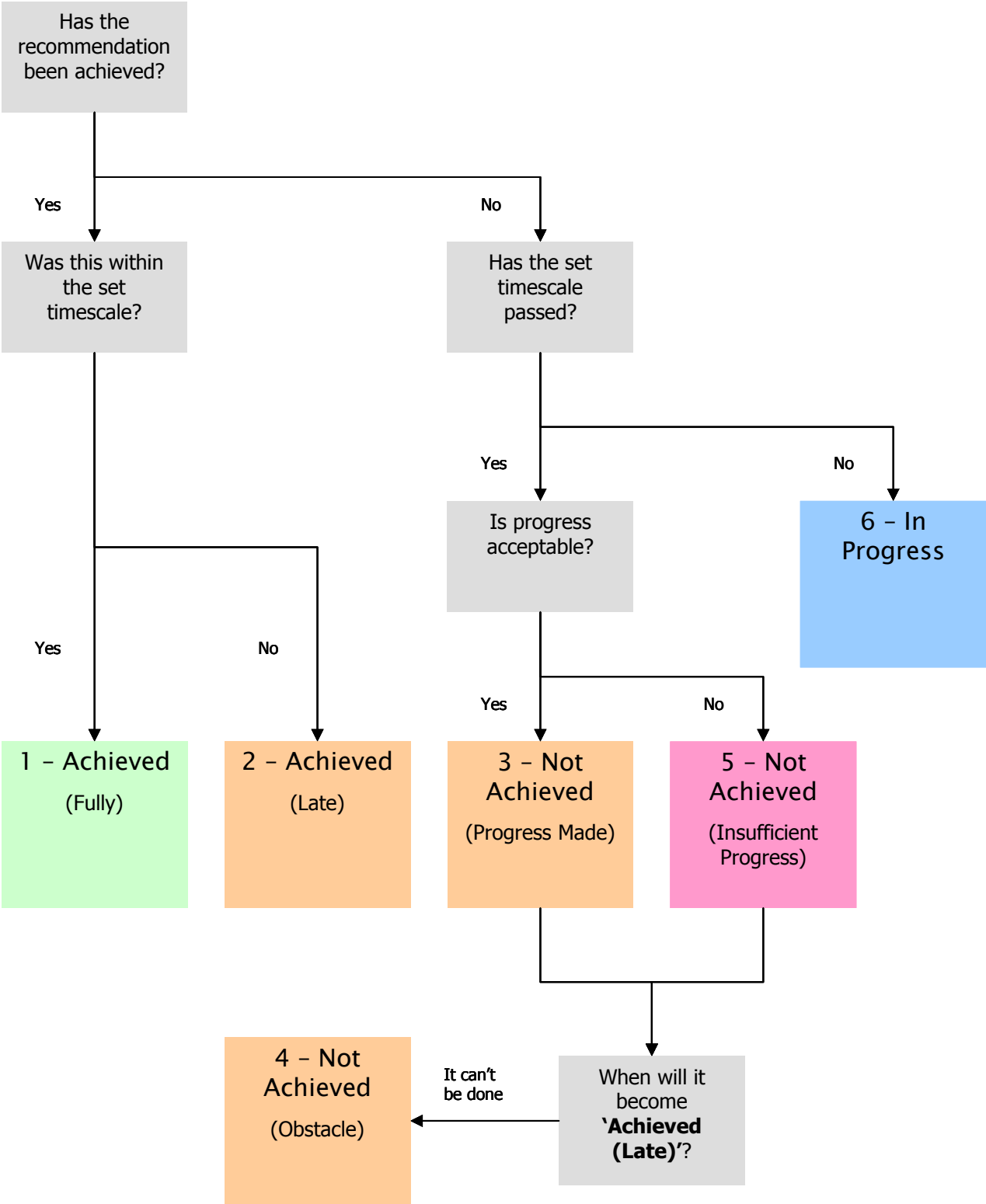
Appendix 1: The Tracking Process

In making its assessment, the Committee may wish to consider:

- What progress/ key actions have been made against each recommendation?
- Are these actions pertinent to the measures required in the recommendation?
- Have the actions been undertaken within the time scale allocated?
- Are there any matters in the recommendation where progress is outstanding?
- Is the Committee satisfied that sufficient progress has been made and that the recommendation has been achieved?

Category	Criteria
1: Achieved (Fully)	The evidence provided shows that the recommendation has been fully implemented within the timescale specified.
2: Achieved (Late)	The evidence provided shows that the recommendation has been fully implemented but not within the timescale specified.
3: Not Achieved (Progress Made)	The evidence provided shows that the recommendation has not been fully achieved, but there has been significant progress made towards full achievement. An anticipated date by which the recommendation is expected to become achieved must be advised.
4: Not Achieved (Obstacle)	The evidence provided shows that the recommendation has not been fully achieved, but all possible action has been taken. Outstanding actions are prevented by obstacles beyond the control of the Council (such as passage of enabling legislation).
5: Not Achieved (Insufficient Progress)	The evidence provided shows that the recommendation has not been fully achieved and there has been insufficient progress made towards full achievement. An anticipated date by which the recommendation is expected to become achieved must be advised.
6: In Progress	It is not appropriate to monitor achievement of the recommendation at this time because the timescale specified has not yet expired.

The Tracking Process



Appendix 2: Progress with Recommendations

No.	Recommendation	Responsibility	Original Date For Completion	Cabinet Member's Assessment
R01	That the City Council encourages community led preventative approaches within its own services and amongst its partner organisations: a) involving working closely with community and voluntary organisations and faith groups; b) utilising and updating the most recent contact information about community champions and community leaders; c) mobilising communities and encouraging them to tackle attitudes to relationship violence with a view to preventing relationship violence and bringing about cultural change in the longer term.	Cabinet Member for Inclusions and Community Safety Cabinet Member for Health & Social Care	November 2015	3

Evidence of Progress (and Anticipated Completion Date if 'Not Achieved')

The Domestic Violence Strategy Review and engagement elements are ongoing and work has commenced to consider issues in respect of community, voluntary and faith groups. A Child Sexual Exploitation workshop was held in September, with the Victims' Champion; The Violence Against Women & Children's Steering Group has met several times; Issues of relationship Violence have been considered at the Birmingham Community Safety Partnership meetings throughout the year.

A National Commission on Forced Marriages has been established during which issues of relationship violence are being considered. An event of the Commission was held in October supported and co-ordinated by the Equalities, Community Safety & Cohesion Service. Evidence was taken from statutory, the voluntary sector, as well as from victims. An event, Voicing for Victims was held in November, facilitated by the Victims' Champion to consider how support for victims in the city (such as victims of relationship violence) is co-ordinated and how to encourage agencies to work better together. The Victims' Champion is working with the Equalities, Community Safety & Cohesion Service to launch a Victims Pledges Charter and to develop a programme of work with young people in respect of Child Sexual Exploitation which is often a feature of Relationship Violence, and support for victims of other crimes. An event with faith communities is planned to consider how faith communities can better work together and independently to support victims and to challenge relationship violence. The Victims and Vulnerable People Group, which is a theme group of the Birmingham Community Safety Partnership, has commissioned interventions in respect of Domestic Violence and Child Sexual Exploitation. Various events are being held in Districts in support of the UN International Day for the Elimination of Violence Against Women. A wide range of activities have been implemented by the Birmingham & Solihull Mental Health Foundation with support from the City Council.

No.	Recommendation	Responsibility	Original Date For Completion	Cabinet Member's Assessment
R02	That the City Council strengthens its leadership role for the city by reviewing the domestic violence strategy and enabling: a) coherent pathways for victims and children, across sectors, to access the support and protection they need; b) strengthening the engagement of schools and other educational establishments, including academies, committing to participating; c) integrated working between Birmingham Youth Services and Think Family Team and Children's Services and homelessness; d) youth service providers from both	Cabinet Member for Inclusion and Community Safety Cabinet Member for Children's Services Cabinet Member for Health & Social Care	November 2015	3

	statutory and third sector involvement in the delivery of informal education Programmes with young people.			
Evidence of Progress (and Anticipated Completion Date if 'Not Achieved')				
<p>Draft review of the strategy has commenced. Key elements of this work have commenced in respect of the areas identified in the recommendations. Issues are being considered at the Violence Against Women & Children Steering Group. Meetings of the Domestic Homicide Review Responsible Authorities Group have been held to consider these issues and to agree evidence to be presented to the Home Office.</p> <p>The City's Health and Wellbeing Board received a report and had a good discussion on the review of the Birmingham Domestic Violence Strategy at its June 2015 meeting. As a consequence it is likely that DV and partner actions to counter this will feature more prominently in the Board's revised Health and Wellbeing Strategy, going forward.</p> <p>The Think Family programme and the Family Support service across the city are now brought together under single management and are part of the Council's early help and children's social care service. This will allow for more support for families to resolve conflict where there is family conflict or lower level domestic abuse, especially to help reduce this. This includes work where teenagers are subject to or perpetrators of domestic abuse. This is all tied to the triaging of all domestic abuse referrals in MASH to ensure the appropriate response to victims.</p>				

No.	Recommendation	Responsibility	Original Date For Completion	Cabinet Member's Assessment
R03	<p>That the City Council and its partners encourage schools and educational establishments to take a 'whole school approach' to children and young people developing positive relationships and provide guidance on:</p> <p>a) the delivery of school based educational programmes and awareness campaigns aimed at educating young people about healthy relationships in both primary and secondary settings drawing on the expertise of the specialist domestic violence sector;</p> <p>b) working in partnership with youth service providers and in facilitating informal education delivery that promotes healthy relationships and brings about a change in attitudes to relationship violence; and</p> <p>c) working with parents to educate parents about attitudes to relationship Violence.</p>	<p>Cabinet Member for Inclusion and Community Safety</p> <p>Cabinet Member for Children's Services</p>	November 2015	3

Evidence of Progress (and Anticipated Completion Date if 'Not Achieved')				
<p>The Domestic Violence Strategy Review has set out a framework for addressing evidence gathering.</p> <p>The Child Poverty Commission has met on several occasions and will consider issues in respect of how relationship violence impacts on young people and its evidence gathering framework is being implemented to engage with a wide variety of partners in this respect. A cross agency group who work and support residents in Ladywood attended a jointly hosted event with Big Lottery and Birmingham Child Poverty Commission in October looking at ways to reduce child poverty and implications of relationship violence.</p> <p>A number of meetings have been held with the Youth Champion, Head of the Youth Service, and Children's Services to establish a working group to promote the Voice of Young People.</p> <p>Theme 12 of the Schools Improvement Plan deals with equalities, cohesion and the respect agenda, and the Curriculum Entitlement Statement underpinned by legislative obligations and responsibilities also promotes whole school approach, healthy relationships, and working with parents.</p>				

No.	Recommendation	Responsibility	Original Date For Completion	Cabinet Member's Assessment
R04	That an assessment of progress against the recommendations made in this report be presented to the relevant O&S Committee	Cabinet Member for Inclusion and Community Safety	November 2015	3

Evidence of Progress (and Anticipated Completion Date if 'Not Achieved')

There is ongoing progress and key areas of work are being delivered. A range of events and initiatives are planned for the remainder of the year and into 2016. The Child Poverty Commission will continue to gather evidence and will look at issues of relationship violence on the family and child poverty. The BCSP will continue to focus on domestic violence and support for victims and will commission a variety of interventions in relation to this. Work will continue to support the role of the Victims' Champion. The DHR team has commenced work to consider how to more effectively join up strategic approaches in respect of high profile cases

Appendix ③: Concluded Recommendations

These recommendations have been tracked previously and concluded. They are presented here for information only.

concluded

No.	Recommendation	Responsibility	Date Concluded by Overview and Scrutiny Committee	Tracking Assessment