

Birmingham Health and Adults Overview and Scrutiny Committee Covid-19 Update

18/01/2020



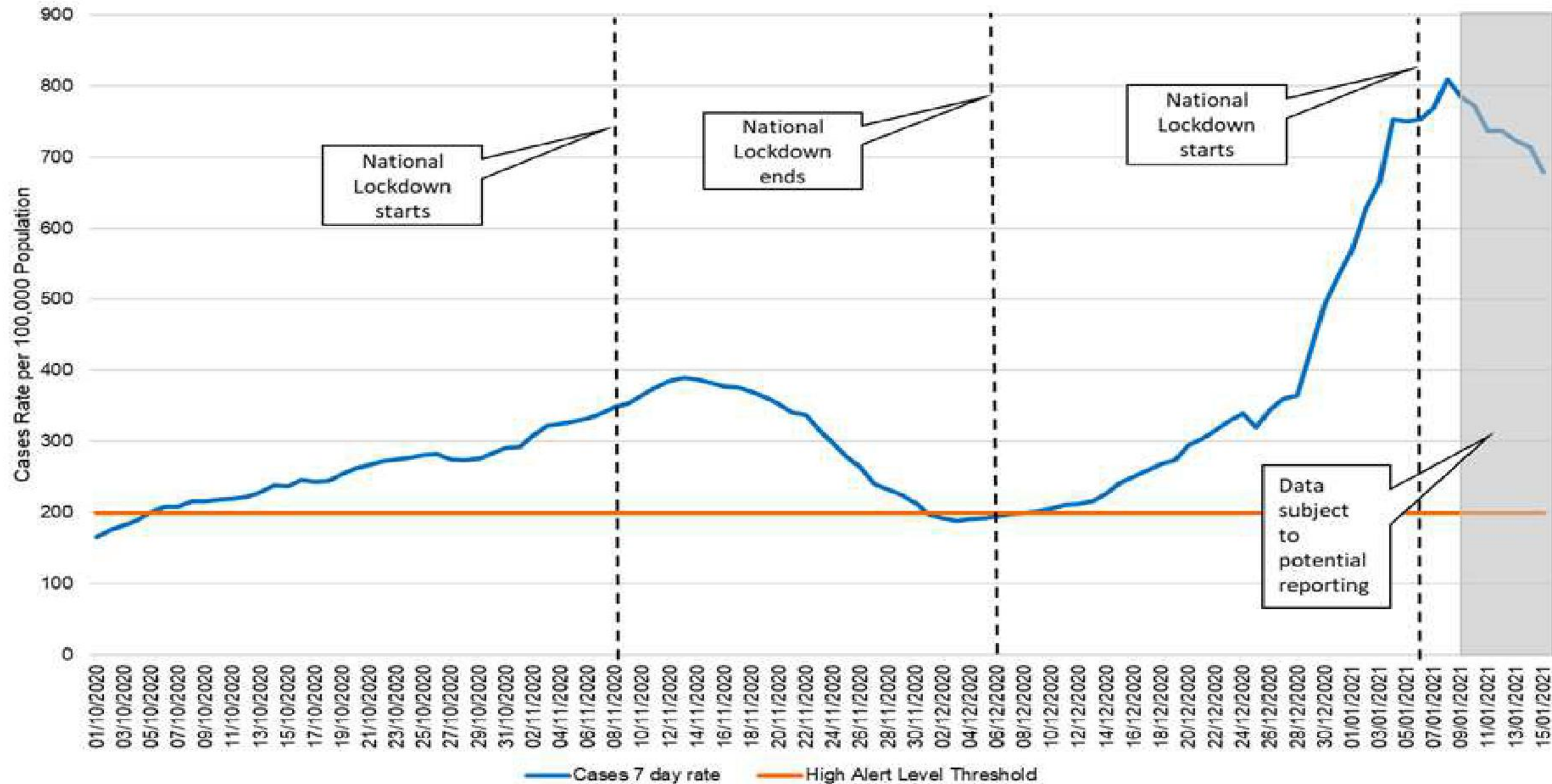
National context

- National view rates have peaked and now starting to see some early of signs of decline, however rates in the >60yrs continues to rise. However still significantly higher than end of Nov. lockdown which only kept rates low for 3-4 weeks.
- Wolverhampton and Sandwell are in the top 20 areas nationally.
- % of positive tests is declining.
- Focus on getting people who are no able to work from home to test regularly with LFD, keen to see priority access for essential workers.
- Hospitalisation is increasing in all areas and deaths continue to rise. Nationally 45% of all hospital beds are occupied by Covid patients.
- National roll out of vaccination continues.

DATA PICTURE

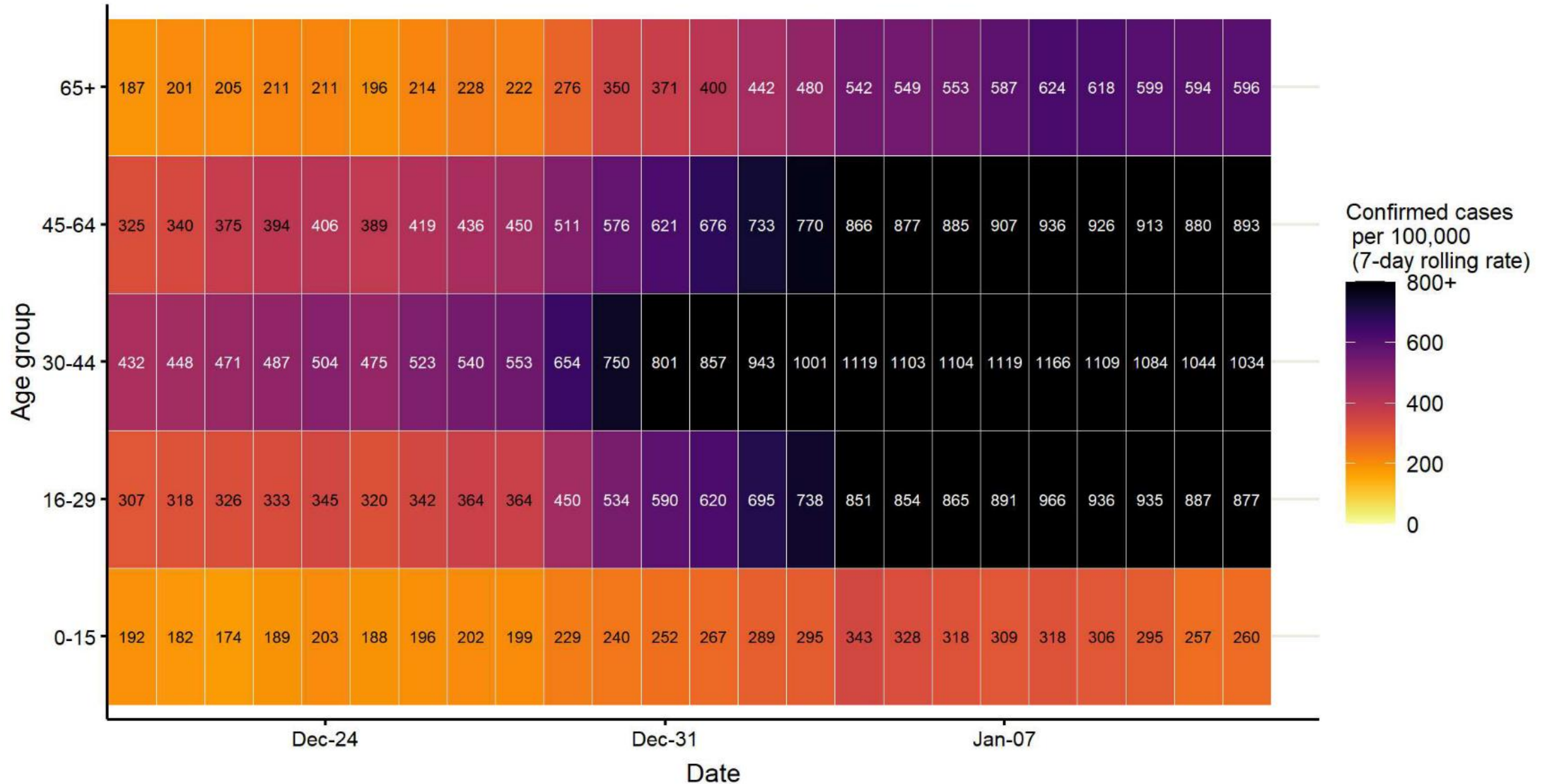


Birmingham Cases Rate per 100,000 Population: 7 day rolling rate benchmarked against alert level thresholds



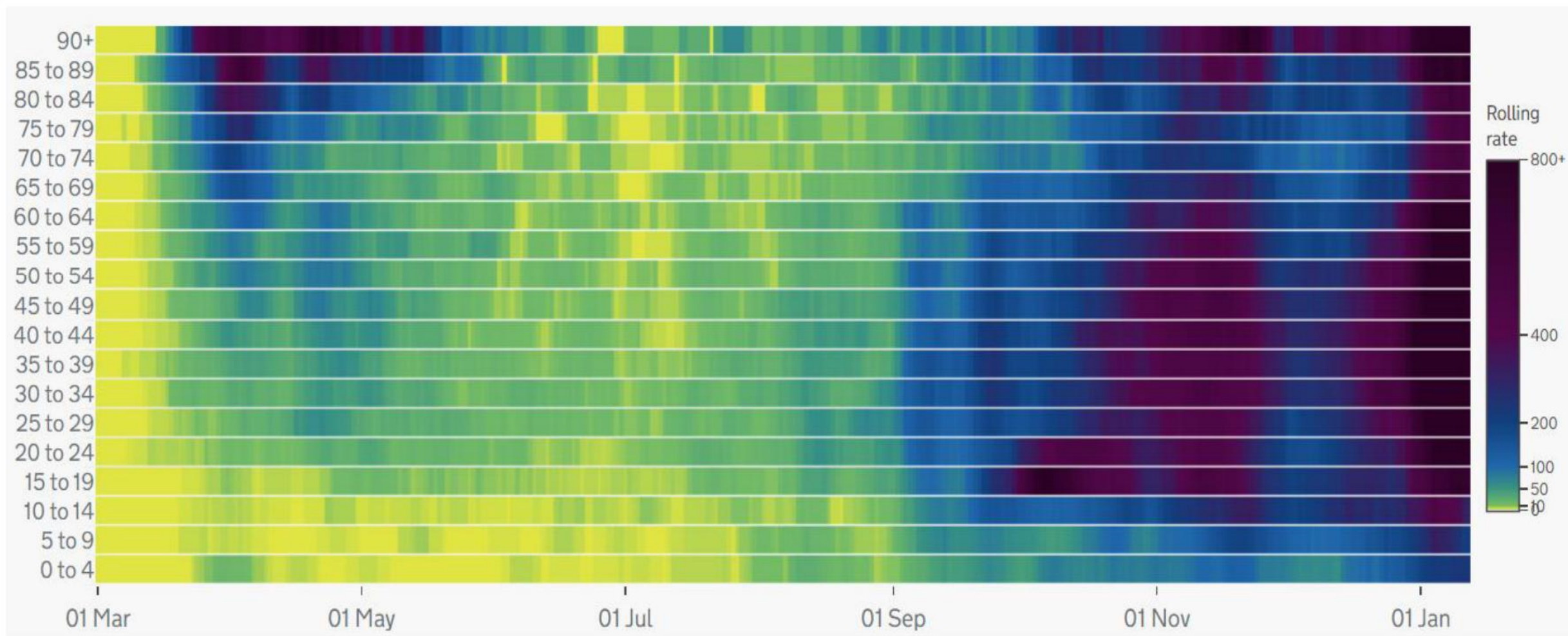
Heat maps of age-specific case rates per 100,000 people

Rates are calculated excluding data from the last four days due to reporting delays up to 16/01/21

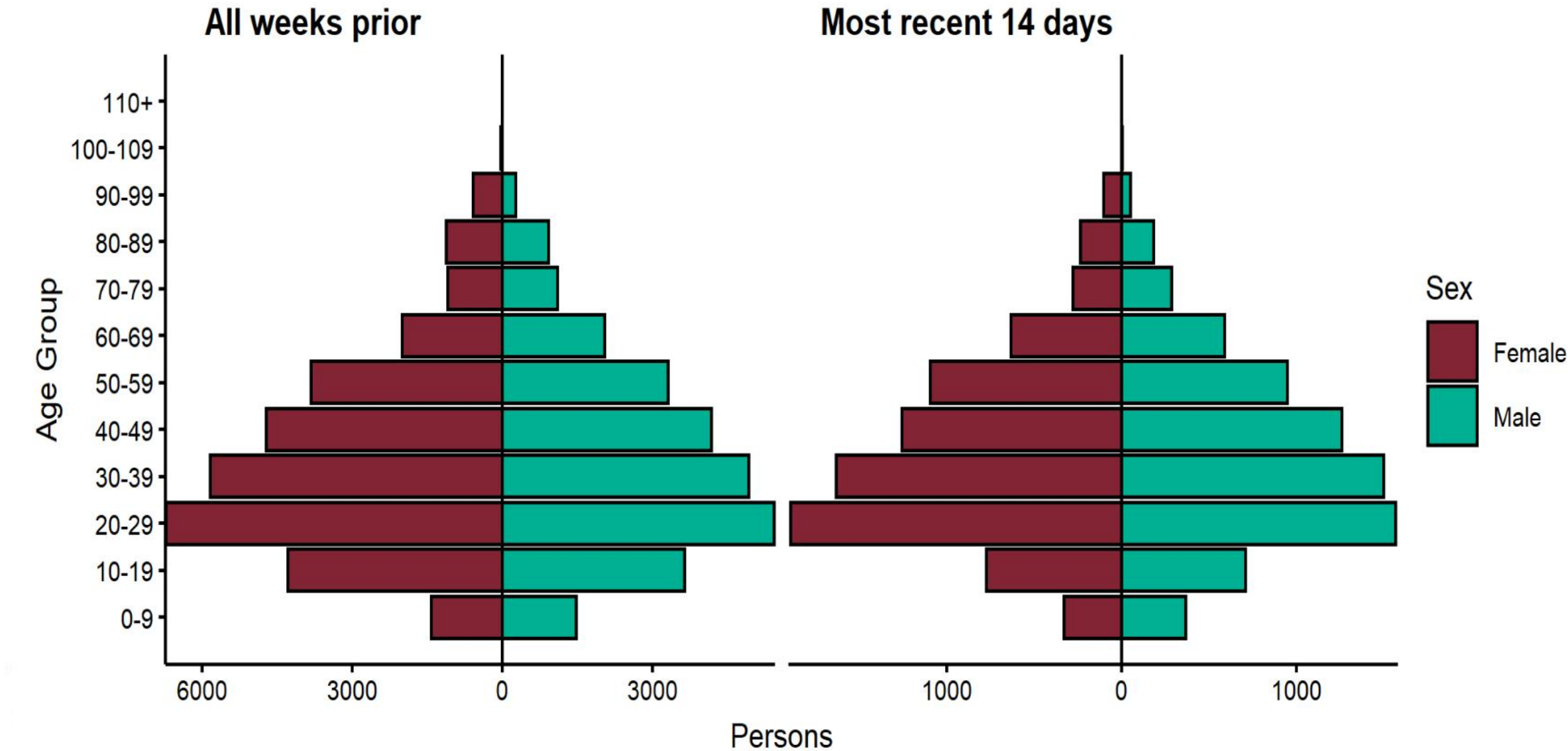


Heat maps of age-specific case rates per 100,000 people from .Gov website

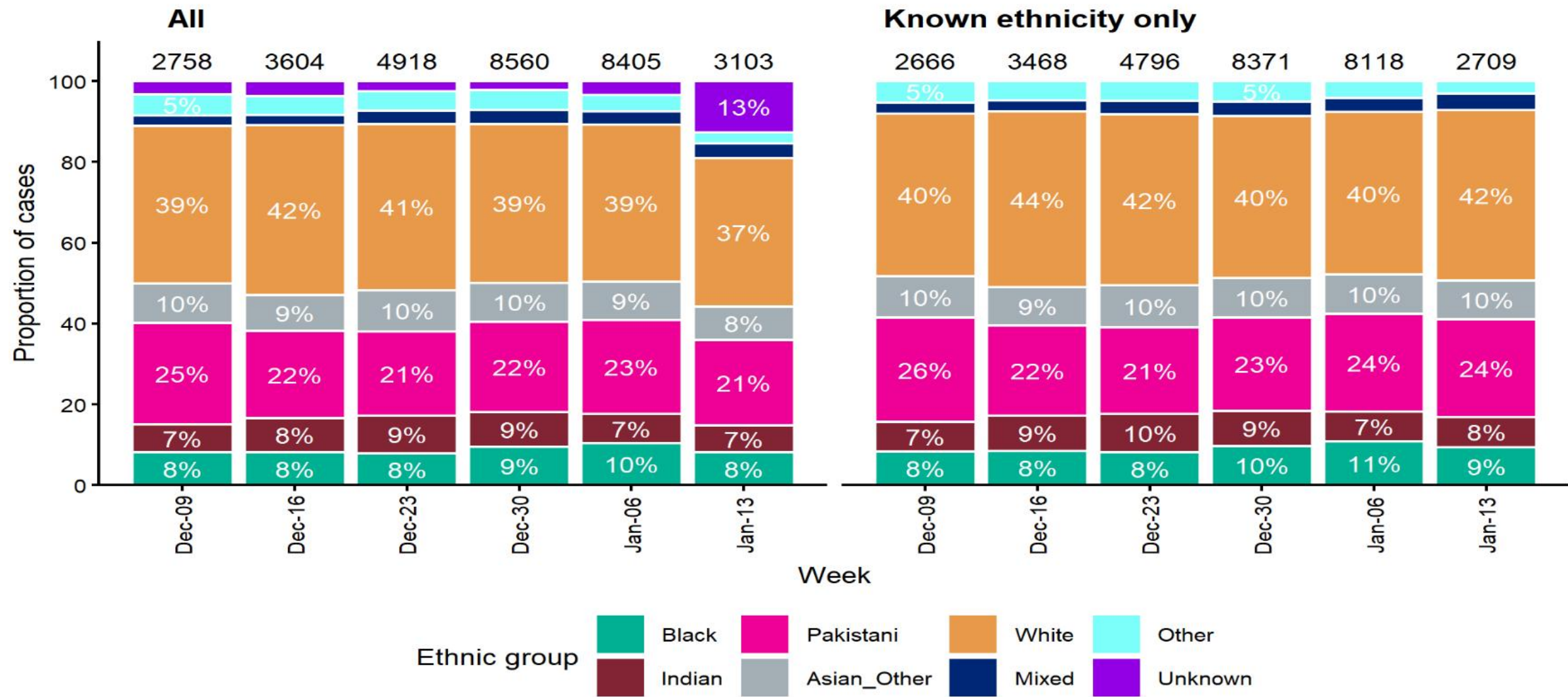
Data up to 12th January



Age-sex pyramid for confirmed cases in past 14 days (January 3rd 2020 to January 16th 2021) and prior (March 1 2020 to January 16th 2020) 14 persons excluded due to missing gender or age.



Weekly distribution of ethnic groups among confirmed cases in Birmingham, last 6 weeks *Most recent bar is 4 days subject to reporting delay, all other bars are complete 7 day periods. Denominator printed on top of bars*



Situations



Situation Awareness

- The number of reported situations in schools is increasing, primarily in early years and Years 1-5.
- Contact tracing identified an increasing number of workplace situations. Investigation highlights poor distancing behaviours.
- Small number of outbreaks/clusters linked to failure to follow Covid-safety procedures especially when not in patient/public-facing activities.
- Increasing numbers of outbreaks in Care Homes.
- Household spread

Testing



Symptomatic Test Locations

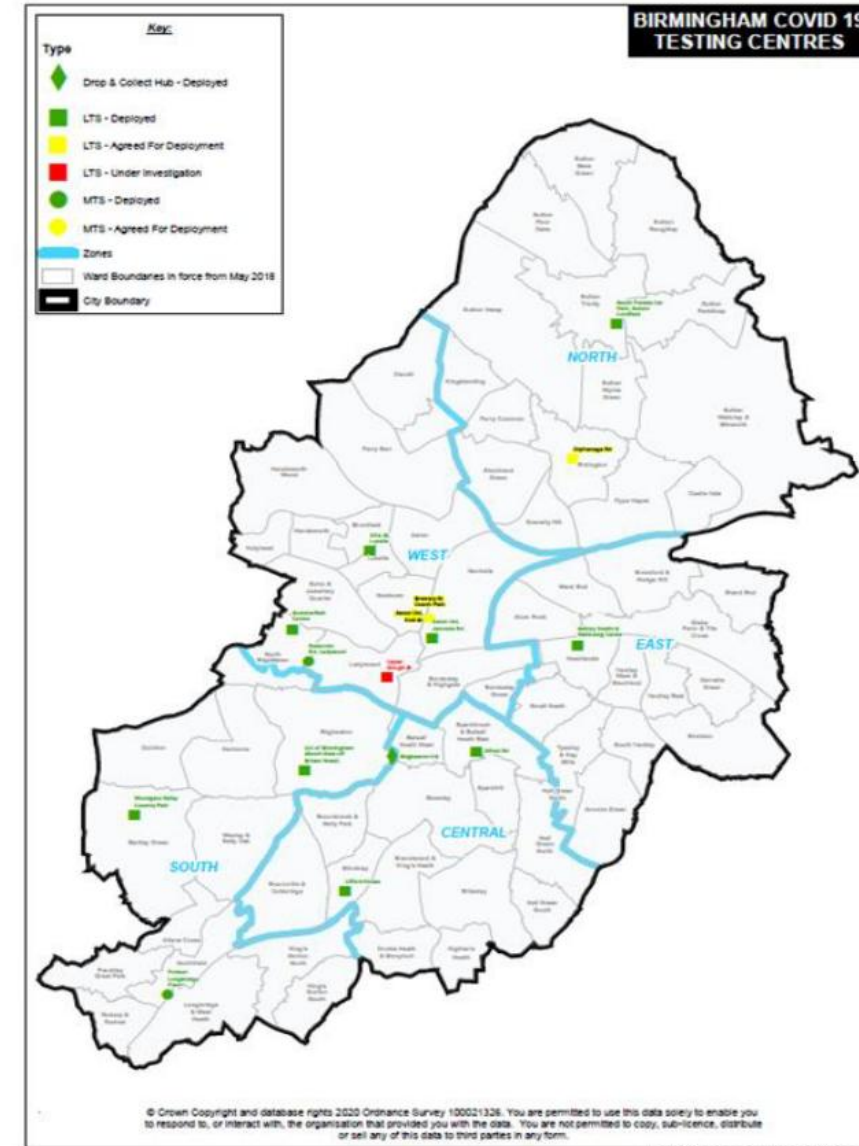
Drive-through facilities

From the 2nd November, it is planned that only 1 Mobile Testing Unit (MTU) will be deployed in the city centre with a 2nd unit in a suburban location. The MTU at the Holt St site will be stood down until the end of November, with future deployment of locations dictated by booking numbers.

Walk-through facilities

1. Villa St Lozells
2. South Parade Sutton Coldfield
3. University of B/ham Selly Oak South Gate Car Park
4. Summerfield Community Sports Centre
5. Woodgate Valley Country Park
6. Saltley Health & Wellbeing Centre
7. Alfred Rd Car Park Sparkbrook
8. Aston University Car Park 6, Coleshill St
9. Lifford House, 45 Fordhouse Lane, Stirchley
10. 7 Capital Erdington, Orphanage Rd

Test sites by Status and Type as at 30th November



Asymptomatic Testing Strategy

Large hub site (NIA)

- Public sector essential front line staff testing every 3 days in line with NHS cyclic testing approach.
- Public walk-in

Medium/Small Spoke sites

- Mobile spokes
- Community pharmacy spokes
- Community spokes
- Workplace spokes
- Clinical & Vulnerable adult spokes

Community Champions



Covid Community Champions & Community Engagement

- Birmingham Covid Champions programme aims to create clarity where there is confusion and opportunities for citizens to take action in local communities to contain Covid in our city.
- Objectives – recruit up to 1,500 volunteers to become Covid Champions
- Provide e-learning modules, webinars, text cascades and whatsapp support
- Weekly key message & FAQ for champions
- Utilise feedback from Champions to inform local strategy

Progress to date

579 champions recruited to date

Fortnightly meetings with faith leaders

Commissioned additional community partners

[birmingham.gov.uk/futurecouncil](https://www.birmingham.gov.uk/futurecouncil)



@BhamCityCouncil



@birminghamcitycouncil



@birminghamcitycouncil

