

Tree Policy Task & Finish Group

Planning & Development

Richard Cowell

Assistant Director | Development



Structure

Overview of City's growth agenda

Balancing competing factors / outcomes

Approach

- Planning Guidance
- Masterplans
- Projects
- Planning applications

BDP Vision: Birmingham in 2031

By 2031 Birmingham will be renowned as an enterprising, innovative and green City that has delivered sustainable growth meeting the needs of its population and strengthening its global competitiveness.

Birmingham's Growth Agenda

150,000 increase in population

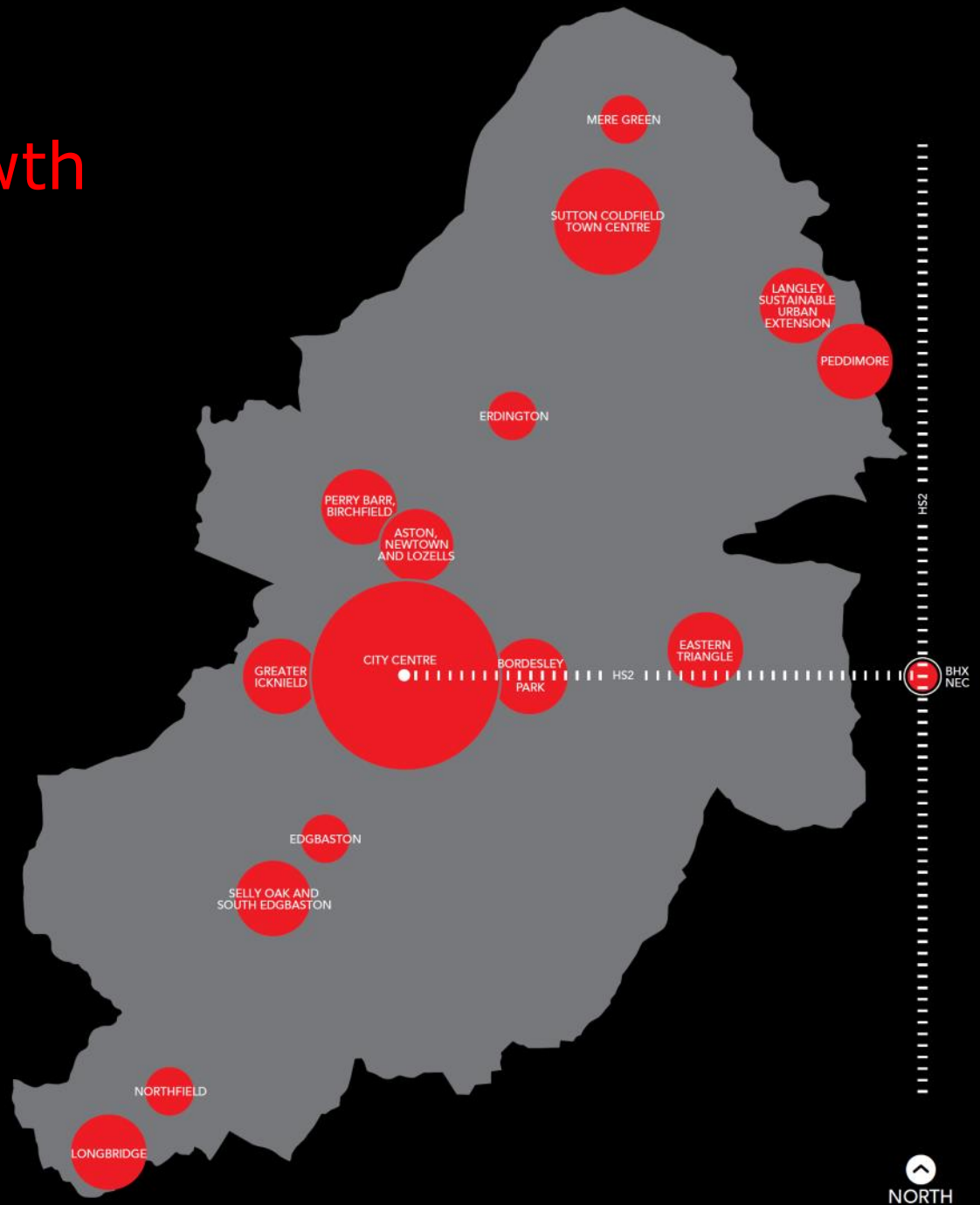
700,000 additional trips daily on the network

100,000 new jobs

81,000 new homes with land for 51,100 identified

£4billion of infrastructure investment

City-wide growth



Birmingham Development Plan

Policies

PG3 place making

.....Take opportunities to make sustainable design integral to development, such as green infrastructure, sustainable drainage and energy generating features.

TP7 green infrastructure network

The City Council will also seek to conserve and enhance Birmingham's woodland resource (collectively known as 'The Birmingham Forest'). Particular attention will be given to protecting the City's ancient woodlands as irreplaceable semi-natural habitats. All trees, groups, areas and woodlands will be consistently and systematically evaluated for protection and all new development schemes should allow for tree planting in both the private and public domains. The importance of street trees in promoting the character of place and strengthening existing landscape characteristics will be recognised.

Balancing Competing Factors

Economic, environmental & social considerations

Development challenges and pressures

Site constraints

Local character

Utilities/Infrastructure

Viability

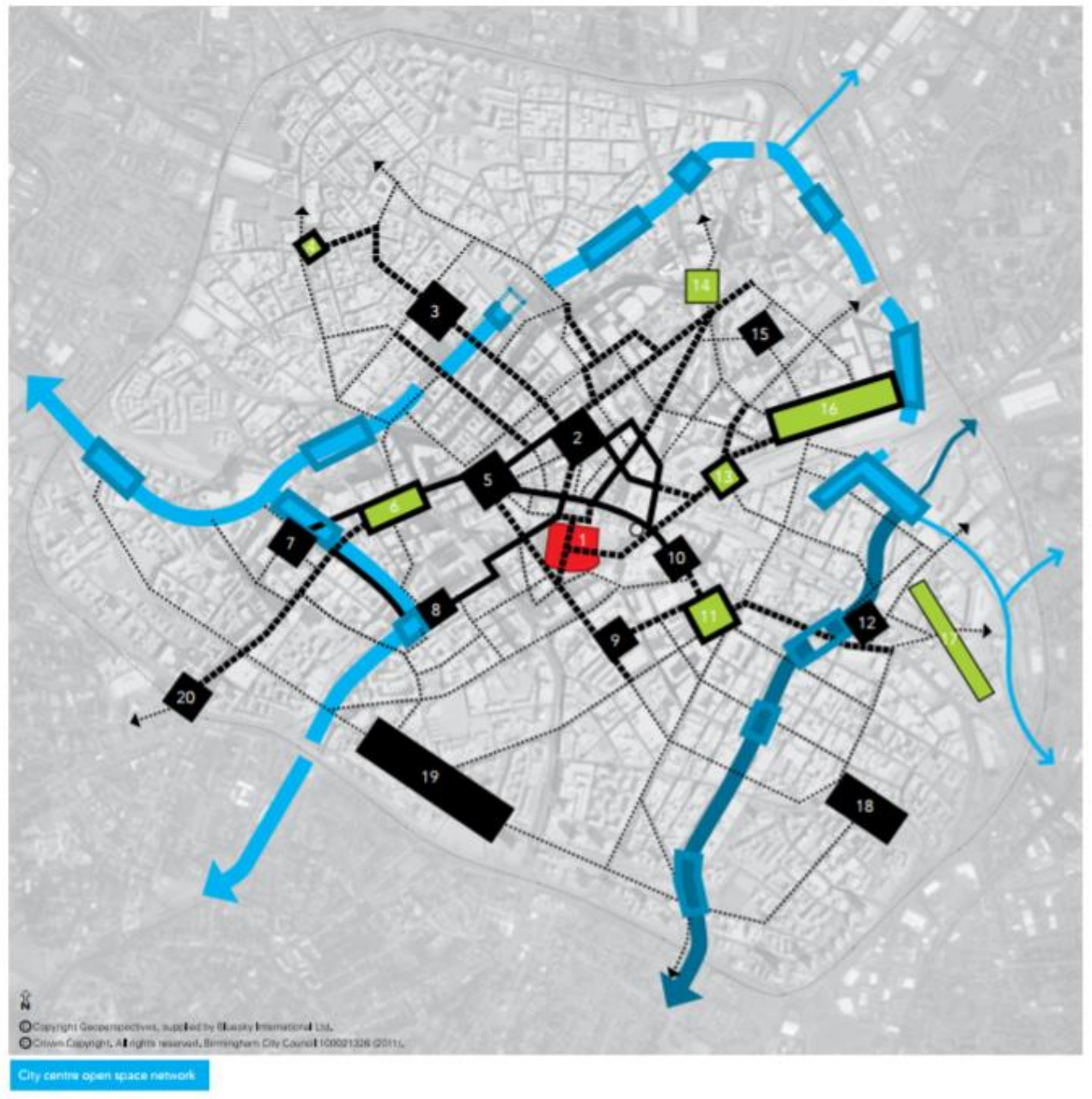
Industrial Landscape



Motor-city



Future City Big City Plan



Birmingham Design Guide

Will add detail and guidance for development

Birmingham ID

Importance of existing trees to City's identity & character

Streets & Connectivity

Role of urban trees in creating quality places & spaces

Green Infrastructure

Need for new trees in development sites

Protection of existing trees

Designing trees into development sites

Birmingham Design Guide

Development stages:

Vision document consultation – Oct / Nov 2017

Draft Design Guide published and consultation – Spring 2018

Adoption of Design Guide – Winter 2018

Masterplanning

key moves | area / landscape analysis | key retentions |
broad landscape gains

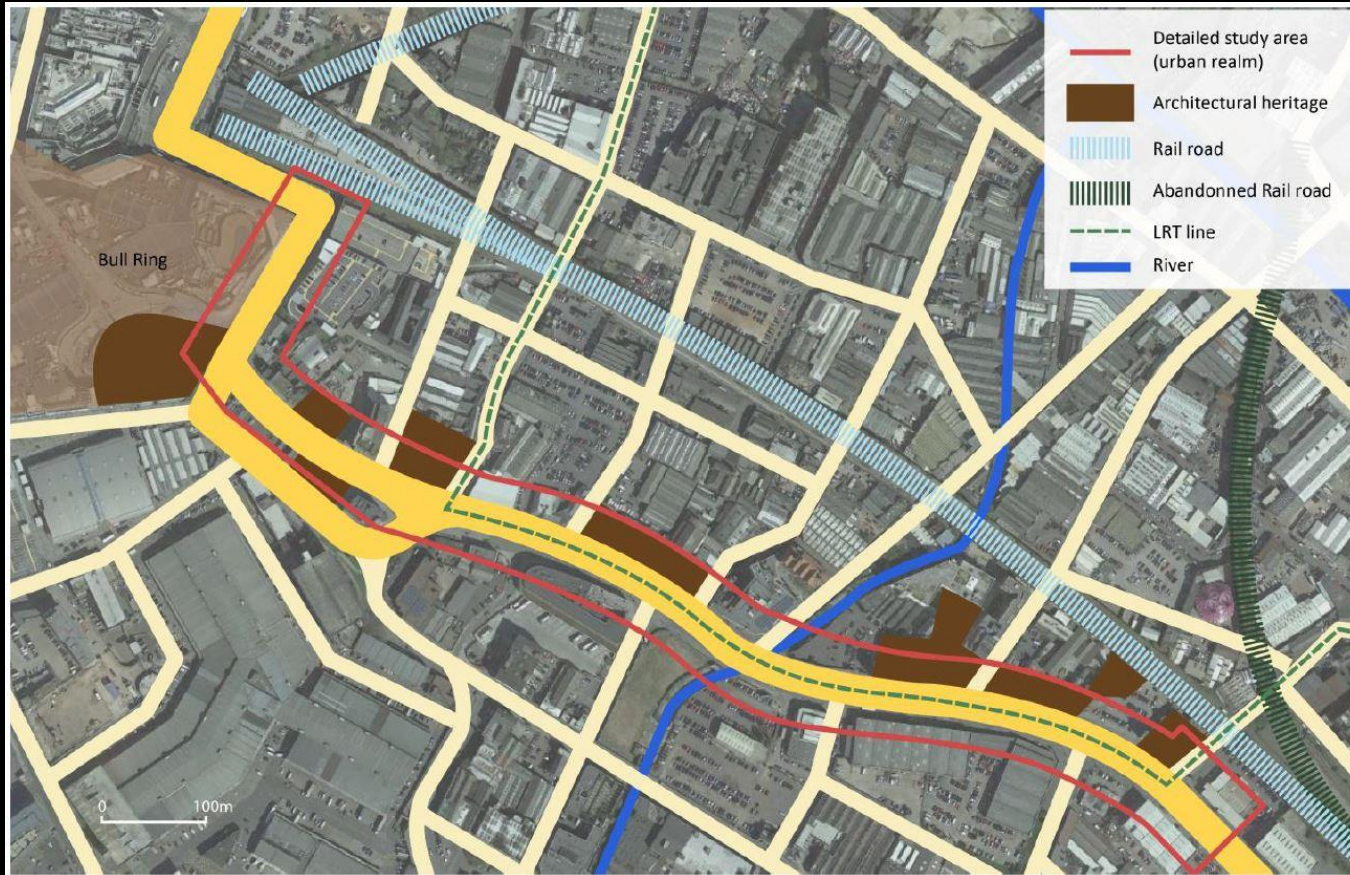


Projects to reconnect & enhance



Eastside Park – example of delivered scheme

Projects to reconnect & enhance



Future - Metro Digbeth High Street Boulevard Project

Planning Applications

Arboricultural Officer

TPO | conservation areas | existing mature trees

City Designer

major developments – seeks long-term gains

Developer Contributions

enables off-site provision / gains

negotiate | balance | seek protection, replacement & gains

Next Steps

- Put in place Birmingham Design Guide along with succinct and clear practice notes
- Birmingham Design & Conservation Review Panel
- Multi-disciplinary working

Richard Cowell

Assistant Director | Development
Birmingham City Council

