

Birmingham City Council Report to Cabinet

21 March 2023



Subject: CHANGE FOR CHILDREN & YOUNG PEOPLE 2023-2028 - BIRMINGHAM CHILDREN & YOUNG PEOPLE'S PLAN.

Report of: Sue Harrison, Executive Director of Children & Families

Relevant Cabinet Member: Cllr Karen McCarthy, Children, Young People & Families

Relevant O &S Chair(s): Cllr Kerry Jenkins, Education & Children's Social Care

Report author: Colin Michel, Interim Strategy & Partnerships Lead
Email: colin.michel@birmingham.gov.uk

Are specific wards affected?	<input type="checkbox"/> Yes	<input checked="" type="checkbox"/> No – All wards affected
If yes, name(s) of ward(s):		
Is this a key decision?	<input checked="" type="checkbox"/> Yes	<input type="checkbox"/> No
If relevant, add Forward Plan Reference: 011129/2023		
Is the decision eligible for call-in?	<input checked="" type="checkbox"/> Yes	<input type="checkbox"/> No
Does the report contain confidential or exempt information?	<input type="checkbox"/> Yes	<input checked="" type="checkbox"/> No
If relevant, state which appendix is exempt, and provide exempt information paragraph number or reason if confidential:		

1 Executive Summary

- 1.1 Birmingham City Council has collaborated with partners to produce a five-year plan to improve outcomes for babies, children, and young people. Partners have agreed to call our plan, *Change for Children and Young People 2023-2028*, because we are committed to changing the conditions in which children and young people in Birmingham grow up.
- 1.2 The Birmingham Children and Young People's Partnership includes the Council, Birmingham Children's Trust, Birmingham and Solihull Integrated Care Board, West Midlands Police & Crime Commissioner, West Midlands Police Force, and Birmingham Voluntary Services Council.

- 1.3 Partners are taking a place-based approach, forging collaboration across the boundaries of department, organisation, sector, and professional discipline to understand the issues, interconnections, and relationships across our whole city.
- 1.4 The partnership ambition for all our babies, children and young people is: **Birmingham is a great place for us to grow up.**
- 1.5 Partners are committed to collaboration that improves the outcomes of babies, children, young people in the following interrelated areas: **We are safe, connected, confident, included, healthy, happy, and respected.**
- 1.6 Partners have agreed three collective strategic actions to achieve our ambition:
 - 1.6.1 **Joining up our offer in local places:** Children, young people and their families connect with help and support they trust throughout the life-course: preconception, through early years, childhood, and adolescence, and into young adulthood. Designing integrated systems, so professionals can work together effectively to improve outcomes. Improving our digital offer, so families can connect with digital information, advice, and support.
 - 1.6.2 **Building safety with children, young people, and families:** Taking a place-based and life-course approaches to connect children and young people with support, safeguarding and protection from harm. Designing structures so that children and young people can build enduring relationships and stay safe.
 - 1.6.3 **Creating an inclusive city:** Where all our children and young people can connect with meaningful opportunities and thrive. Connecting with meaningful things to do in inclusive places. Developing strong voices, influence decision-making, preparing for adulthood. Responding to needs of babies, children, and young people with SEND and additional needs. Creating inclusive cultures in all our organisations. Supporting our workforce to use relationship-based approaches.
- 1.7 A cross-cutting theme across all three of our collective actions is: **Acting together as partners to break down barriers of poverty and inequality faced by Birmingham's children, young people, families, and communities.**
- 1.8 The collective actions in our plan have been identified by listening to the views of over 4000 children and young people (2020 and 2021), needs analysis, workshops with professionals from across our partnership (March to August 2022), and a strategic workshop with our partnership Board (September 2022). In January 2023, we launched a survey to test our ambition (1.4), outcomes (1.5) and strategic actions (1.6) with children and young people. Feedback from children and young people has confirmed our thinking, and their voices and ideas are included throughout our plan.
- 1.9 Partners have agreed to join the UNICEF Child Friendly Cities and Communities initiative to support our commitment to the rights of children and young people. Birmingham will be the eleventh place in the United Kingdom to join this international initiative and we are committed to take an innovative approach to making change for and with our children and young people. We anticipate that our commitment to be formally approved by UNICEF during March 2023.

2 Recommendations

2.1 Cabinet is asked to:

- 2.1.1 Recommend Birmingham's Change for Children and Young People Plan 2023-2028 for endorsement and adoption by the Full Council.

3 Background

- 3.1 Section 10 of the Children Act 2004 sets out the requirement for the local authority to promote cooperation between partners to improve wellbeing of children and young people. Our local partnership of organisations in Birmingham have agreed to produce and deliver a five-year Children and Young People's Plan, which forges collaboration between partners to improve outcomes for children and young people.
- 3.2 Birmingham City Council is committed to collaboration with partners to produce and publish a Children and Young People's Plan as part of our formal Policy Framework.
- 3.3 In 2020, more than 4000 children and young people were consulted, and they shared the outcomes that were most important to them. During early 2022, following the far-reaching effects of the Covid-19 pandemic, partners agreed to develop a strategic plan to achieve these outcomes with and for children and young people.
- 3.4 During Spring and Summer 2022, partners analysed available data, and attended 'think tanks' to develop and refine priorities for the five-year plan.
- 3.5 In September and October 2022, partners refined values, principles, commitments, and drafted a framework for collective strategic action. The partnership Board agreed to take a whole place-approach to changing the conditions in which children and young people grow up, and to name the plan *Change for Children and Young People 2023-2028*.
- 3.6 On 7 December 2022, the framework, and a plan to launch on 19 April 2023, was shared with Extended Council Leadership Team and gained wide support. A report outlining the framework was presented at Children and Families Overview and Scrutiny Committee on 4 January 2023, and the Committee noted its support for the development of the partnership plan.
- 3.7 On 10 January 2023, the Birmingham Children and Young People's Partnership Board approved the framework for the plan. On 11 January 2023, an online survey was opened for children and young people to share their responses to the framework, and keep their voices at the heart of our planning and delivery.
- 3.8 On 27 February 2023, a presentation was given to Council Leadership Team to secure support of the strategic framework (see 4 below), which was received.

4 Change for Children and Young People 2023-2028

- 4.1 The ambition for Birmingham's babies, children and young people agreed by the partnership is: **Birmingham is a great place for us to grow up.**

4.2 Values, principles, commitments, and outcomes have been agreed by the partnership and have informed the development of the plan.

4.2.1 **Values:** openness, integrity, boldness, collaboration, and learning. These values lay the foundation for everything we do together as a partnership.

4.2.2 **Principles:**

- Children and young people are at the heart of everything we do
- We are ambitious for every child and young person in Birmingham
- We are one partnership, with one set of priorities

4.2.3 **Commitments:**

- Provide bold, collective, system leadership
- Create a collaborative and integrated service system
- Hold each other to account with support, oversight, and challenge
- Base our offer to children and young people in the best available evidence
- Know the difference we are making

4.2.4 **Outcomes:** we, Birmingham's babies, children, and young people, are:

- **Healthy and nurtured** throughout our life-course
- **Safe** at home and in places outside of our families and homes
- **Connected** to meaningful opportunities and prepared for adulthood
- **Confident** to connect with help we can trust, right time, right place
- **Included:** we can get the best from home, education, and our communities
- **Happy and respected:** our voices and lived experiences matter

4.3 Using data analysis, insight on outcomes and performance, and listening to the voices of children, young people and families, partners have agreed three collective strategic actions to achieve our ambition and to improve outcomes:

4.3.1 **Joining up our offer in local places** so children, young people and their families connect with help and support they trust throughout the life-course.

- Offering help and support to close to where children, young people and families live, such as in early years settings, schools, in children's centres, family hubs, libraries or community buildings.
- Connecting families to help and support that improves outcomes for babies, children, and young people, from preconception, through early years, childhood, and adolescence, and into young adulthood.

- Designing integrated service systems, so professionals from different services can work together effectively, and families can connect with help and support they trust when and where they need it.
- Improving our digital offer, so that children, young people, and families can connect with digital information, advice, and support.

4.3.2 **Building safety with children, young people, and families** at home, and in places outside of home.

- Taking place-based and life-course approaches to building safety with children, young people, families in physical and virtual spaces.
- Helping children and young people to connect with support, safeguarding and protection from harm, wherever and whenever harm is happening.
- Designing structures across our partnership so that children, young people, and families can build enduring relationships that help to keep them safe.
- Building safety with children, young people, and families where there is harm from domestic abuse and substance misuse
- Helping young people to connect with support as they transition to adulthood including those with SEND and additional needs

4.3.3 **Creating an inclusive city** where all our children and young people can connect with meaningful opportunities and thrive.

- Connecting our families, babies, children, and young people with meaningful things to do, such as arts, heritage, sport, and leisure.
- Creating safe, happy, welcoming, and inclusive places to learn and grow.
- Supporting and empowering children and young people to develop strong voices, get involved, influence decision-making, setting them up as confident adults.
- Responding effectively to babies, children, and young people with SEND and to those with additional needs, identifying those needs at the earliest possible point.
- Creating inclusive cultures in our organisations and services, and reducing exclusion from our education settings.
- Supporting our workforce to use relationship-based approaches in their work with babies, children, young people, and their families.

4.4 A cross-cutting theme across all three of our collective actions is: **Acting together as partners to break down barriers of poverty and inequality faced by Birmingham's children, young people, families, and communities.**

4.5 To support delivery of all collective strategic actions, our partnership is committed to:

- Implementing relationship-based and restorative practice across all our settings and services,
 - Developing a joint commissioning strategy to improve outcomes for babies, children, and young people, and
 - Developing integrated locality working across our city.
- 4.6 Delivery and progress against the strategic actions of the plan will be overseen by the Birmingham Children and Young People's Partnership Board at quarterly meetings. An annual report, including a 'you said, we did' section prepared for and with children and young people, will be published to report on progress made every year, throughout the duration of the plan to 2028. Progress reports will also be monitored by Birmingham's Health and Wellbeing Board, with quarterly written reports, and an annual verbal update.

5 Recommended Proposal

5.1 Cabinet Members are asked to:

- 5.1.1 Recommend the strategic framework of Birmingham's *Change for Children and Young People Plan 2023-2028* to progress to adoption by the Full Council.

5.2 Cabinet Members are asked to note:

- 5.2.1 Change for Children and Young People 2023-2028 is the overarching plan for our partnership, which will provide the strategic context for further programme development and transformation activity.
- 5.2.2 Additional delivery and performance plans will be developed within the oversight of Birmingham Children and Young People's Partnership Board, including detailed partnership plans and performance measures for our collective strategic actions.

6 Consultation

- 6.1 The ambition and outcomes of our plan were informed by consultation with over 4000 children and young people in 2020 and 2021. We have shared the framework of our plan and received further feedback to inform its development, including a survey responded to by a further 899 children and young people. We have included views and feedback from children and young people in the text of our plan. We will continue to seek the views of children, young people, their families, and partners to inform planning, delivery, monitoring, and evaluation throughout the life of our plan, as part of our commitment to the UNICEF Child Friendly Cities and Communities initiative.

7 Risk Management

- 7.1 Having considered the risks associated with this decision, the current level of risk is identified as low.

8 Compliance Issues:

8.1 How are the recommended decisions consistent with the City Council's priorities, plans and strategies?

- 8.1.1 The outcomes, priorities and strategic actions within this plan are purposefully aligned to the Council's Corporate Plan 2022-2026 Be Bold Outcomes.

8.2 Legal Implications

- 8.2.1 No legal implications have been identified.
- 8.2.2 Birmingham Children and Young People's Partnership will fulfil the requirement under Section 10 of the Children Act 2004 for the local authority to promote cooperation between partners to improve wellbeing of children and young people.

8.3 Financial Implications

- 8.3.1 The total cost of the programme is approximately £300k per year, the funding of this amount has been agreed in principle by members of the Birmingham Children and Young People's Partnership Board.
- 8.3.2 BCC's contribution will be approximately £100k per year and will be funded through confirmed contributions from across the Council and the growth that has been allocated to the Children & Families Directorate for 2023/24 onwards.

8.3.1 Public Sector Equality Duty

- 8.3.3 A draft Equalities Impact Assessment has been completed.

8.4 Environmental and Sustainability Implications

- 8.4.1 No implications.

9 Appendices

9.1 Appendix 1 - DRAFT Change for Children and Young People 2023-2028 10 March 2023.

9.2 Appendix 2 - Equality Impact Assessment.

Background Documents

9.3 Report to Cabinet 7 June 2022: Children and Families Directorate: improvement programme updates and resources requirement.

BIRMINGHAM CHILDREN & YOUNG PEOPLE'S PARTNERSHIP

CHANGE FOR CHILDREN & YOUNG PEOPLE 2023-2028

ABOUT THIS DRAFT – FRIDAY 10 MARCH 2023

This draft text for the Birmingham's Children and Young People's Plan for 2023 to 2028 ('our plan') has been written by drawing upon:

- **Ongoing conversations and scoping workshops** ('Think Tanks') undertaken with Birmingham Children and Young People's Partnership Board and with professionals from across our partnership agencies between April 2022 and March 2023.
- **Conversations undertaken with young people** between November 2022 and March 2023 about the framework we have proposed for our plan.
- **A survey, codesigned with children and young people**, was open for six weeks until Friday 17 February 2023, and gathered further views from 899 children and young people about the framework for our plan. Direct comments from this survey have been added to our plan.

Our plan is proposed as a living document that will grow and adapt over the next five years. We will continue to test and learn as we put our plan into action with children, young people, and their families. We aim to make continuous improvement, year on year, based on feedback from children and young people, which forms a core part of our commitment to joining the UNICEF Child Friendly Cities and Communities Initiative [subject to signing an MOU]. We will produce annual 'you said, we did' reports about our learning from children and young people, while putting the plan into action.

Young people and professionals recommended that we change our title to Birmingham Children **and Young People's** Partnership to emphasise our commitment to young people, and to the distinctness of adolescence from childhood as a phase of growing up. We recognise that a child-first approach is essential in our work with 11–18-year-olds, and we take seriously the harm of adultification, especially its impact on Black children and young people. However, we also recognise the benefits in recognising adolescent development and adolescent identities in referring to both children **and young people** in our partnership and our plan, while also making a full commitment to become an anti-racist and inclusive city.

Young people and professionals have also recommended that we refresh the visual identity the partnership to reflect our strong focus on relationships, collaboration, and place. We will publish graphic, digital, and child and young person-friendly versions of this plan with an introduction written by young people [in a workshop to complete this during March]. We anticipate that the final versions will be ready for adoption by partner governance during April 2023, ready to launch our plan on Wednesday 19 April 2023.

CHANGE FOR CHILDREN & YOUNG PEOPLE: 2023-2028

We are delighted to share Birmingham's five-year Children and Young People's Plan. This plan sets out the strategic actions we will take together to achieve our bold ambition: to make Birmingham a great place to grow up for all our children and young people.

We want all our children and young people to be healthy, safe, confident, included, happy, respected, and connected to meaningful opportunities so they can thrive as they prepare for adulthood.

We will only achieve our ambition if we put Birmingham's children and young people at the heart of everything we do. Our plan has been developed in collaboration with children and young people and contains hopes and challenges that matter most to them.

[We are proud to join the UNICEF Child Friendly Cities and Communities programme, committing to put the rights of children and young people at the heart of our plan, and to design and deliver our action plans with children and young people – this text will be confirmed subject to signing an MOU with UNICEF]

Our plan is based on analysis of our successes and opportunities, as well as our understanding of the challenges we face together. Birmingham is a city with boundless potential, but too many of our children and young people face significant disadvantages, and do not benefit from the opportunities our city has to offer.

We know that we must tackle together these deep-seated structural inequalities if we are to improve life chances for our most vulnerable groups of children and young people. As we continue to improve our insight from data analysis and best available evidence, our plan will focus on improving the help we offer to children, young people and families who face significant disadvantage.

INTRODUCTION FROM BIRMINGHAM CHILDREN & YOUNG PEOPLE'S PARTNERSHIP

Birmingham Children and Young People's Partnership includes the Council, NHS, Police, and Birmingham Voluntary Service Council (BVSC), and we work with the education sector, the wider public sector, the private sector, and with our families and communities.

We believe in the power of relationships. Our plan is about building and sustaining good quality relationships with children, young people, their families, and communities. It's about compassionate, inclusive leadership, and forging effective collaboration between professionals.

As a partnership, we are committed to combining our skills and resources across organisations and sectors to better understand and tackle the issues across our city.

Together, we will build trust and overcome deep-rooted challenges.

Together, we will lead a collaborative learning approach to make real system change happen.

Together, we will make Birmingham a great place to grow up for all our children and young people.

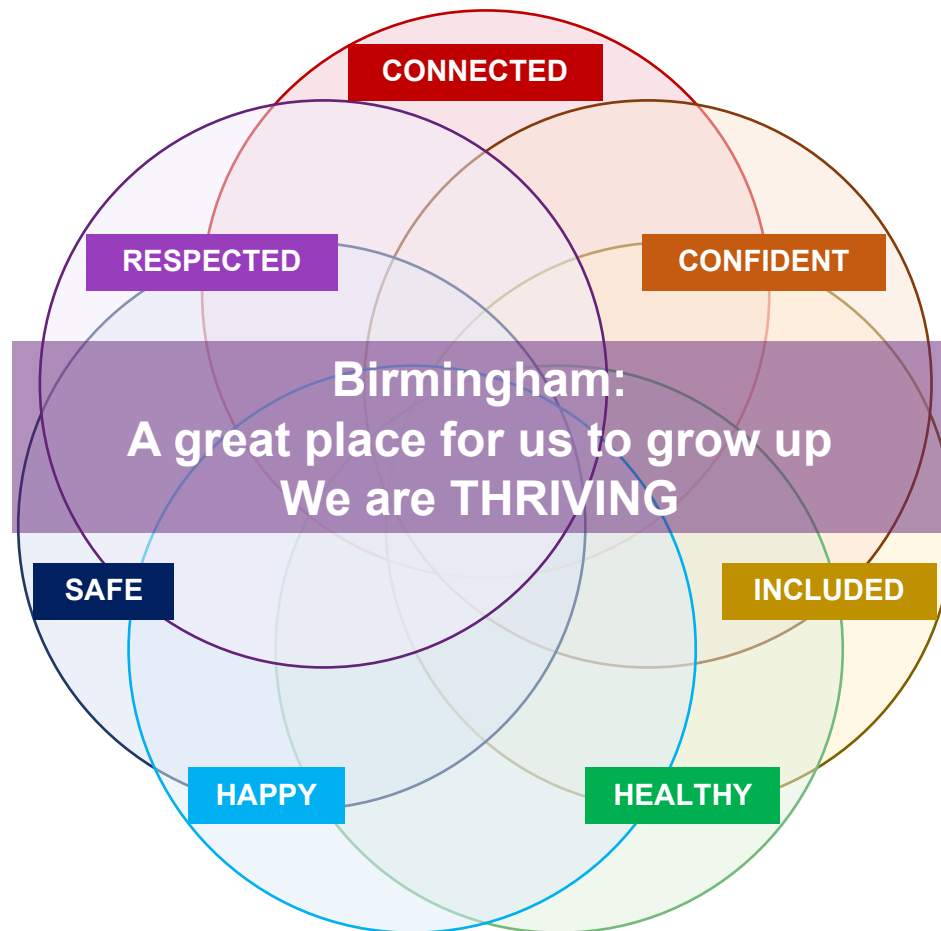
Signed by the members of the Birmingham Children & Young People's Partnership Board:

INTRODUCTION FROM CHILDREN & YOUNG PEOPLE

What children and young people have told us matters to them [NOT ACTUAL DIAGRAM – MOCK-UP ONLY]

A GREAT PLACE FOR US TO GROW [Final draft will include an introduction from children & young people, devised at workshops during March 2023]	SAFETY “Safer streets are very important. Crime rates are very high, for anyone at all, going out alone seems like a dangerous journey and many may not be allowed to go out alone because of the danger. Improved safety would also save many lives.”	CONNECTION “We need more free activities and places to go that are closer to where we live, so we don’t have to travel far.” “Create more work experience and job opportunities for young people.”	INCLUSION “Help more children and young people feel included in opportunities and events.” “Tackle racism!”
	RESPECT “No more bullying at school” “Take children and young people’s views seriously and support us to get involved in decisions.”	CONFIDENCE “Professionals that we can go to for help with our problems.” “Reduce stigma about getting support for at school.”	HEALTH “More help for mental health before our problems get worse.” “More young people are realising that they are neuro-divergent – we need support.”

OUR AMBITION & OUTCOMES [NOT ACTUAL DIAGRAM – MOCK-UP ONLY]



We are THRIVING, because we are...

CONNECTED to meaningful opportunities and we are prepared for adulthood.

CONFIDENT to connect with help we can trust at the right time, right place.

INCLUDED and get the most we can from our home, school, and community.

HEALTHY as possible and nurtured throughout our life course.

SAFE at home, and in places and spaces outside of our families and schools.

HAPPY and RESPECTED Our voices and lived experience matter.

BIRMINGHAM'S ACHIEVEMENTS [INFOGRAPHIC]

We think that Birmingham has lots to be proud of in what we have achieved with and for children and young people

<p>What make Birmingham a great place to grow up?</p> <p><i>Things that children and young people have told us about our city</i></p> <p><i>“Range of different cultures living side by side, mostly getting along well. The range of leisure activities from shopping centres, sports, parks, and activity centres”</i></p> <p><i>“It is a very happy and fun community to live in”</i></p> <p><i>“A super-diverse city!”</i></p> <p><i>“It’s a welcoming city. Not as crowded as London. There are some nice places. Lots of fun activities for children. Great museums and places to go.”</i></p> <p><i>“The city is alive!”</i></p>	<p>We are SAFE.</p> <p><i>Improvements in the Children and Young People’s Travel Service</i></p> <ul style="list-style-type: none"> • Since September 2021 when the percentage of eligible students accessing Transport support was 88.25%, significant improvements have been made in the way students are identified as needing transport and added to routes and our figures are now consistently above 99% each month. <p>Source: BCC</p>	<p>We are CONFIDENT.</p> <p><i>Young people make educational progress</i></p> <p>In 2021, 51.20% of 15-year-old pupils from state funded schools entered higher education. 6.8% above the England average.</p> <p>61.70% of young people studying at the age of 16 attained a Level 3 qualification by the age of 19. 2.2% above the England average.</p> <p>Source: Department for Education</p>
	<p>We are INCLUDED.</p> <p><i>Secondary Phase Transfers</i></p> <p>The rate of Secondary Phase Transfers completed by the 15 February deadline has significantly increased:</p> <ul style="list-style-type: none"> • 0% in 2021, • 98.82% February 2022 • 99.4% in February 2023. <p>These transfers are when children with special education needs, and their families know what secondary school they are going to attend at the next stage of their education.</p> <p>Source: BCC</p>	<p>We are RESPECTED.</p> <p><i>UNICEF RIGHTS RESPECTING SCHOOLS AWARD</i></p> <p>210 of Birmingham’s education settings have achieved the Bronze, Silver, and Gold Award</p> <p>More than 103,800 children and young people have benefited from attending a school involved in the RRSA programme.</p> <p>Source: UNICEF</p>

WHAT WE KNOW [INFOGRAPHIC]

Here are some data about what we know about children and young people in Birmingham:

287,461

Children and young people ages 0-17

419,030

Children and young people ages 0-24

66%

School-age population is Black, Asian, Mixed or another global majority group

Source: Census 2021, Office of National Statistics.

446

State-funded education settings: maintained schools, academies, free schools, and colleges

186

Post-16 settings

Data for number of languages spoken in our schools to follow

95,447

Children and young people (under 17) living in relative poverty

Source: provisional data from Department for Work and Pensions

7585

Children and young people with an Education, Health and Care Plan for special education needs and disabilities

29,615

Children and young people with Special Education Needs support

Source: Department for Education 2021/2022 Education Statistics

240

Number of our children and young people permanently excluded in 2021/2022

9657

Approximate number of children and young people in a family with an early help plan in 2022

5956

Children and young people with a social worker in 2022 (Child in Need and Child Protection)

2665

Looked after children

1153

Care leavers ages 18 to 25

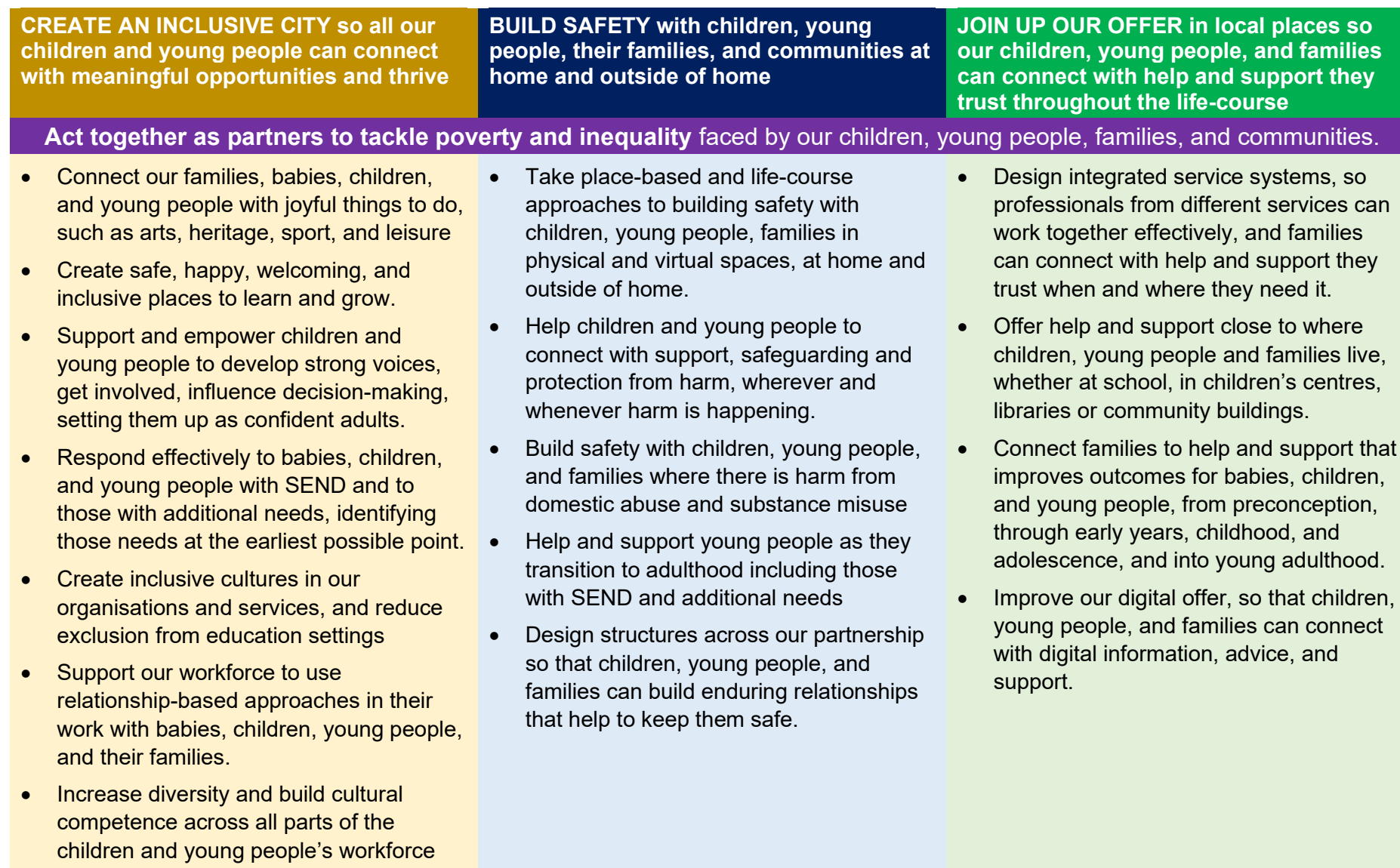
Source: Birmingham Children's Trust

HOW WE WILL WORK [DIAGRAM]

As a partnership, all our work together is underpinned by our shared values and principles.



OUR COLLECTIVE STRATEGIC ACTIONS [DIAGRAM]



KNOW THE DIFFERENCE WE ARE MAKING [SAMPLE INDICATORS TO BE REFINED]

CREATE AN INCLUSIVE CITY so all our children and young people can connect with meaningful opportunities and thrive	BUILD SAFETY with children, young people, their families, and communities at home and outside of home	JOIN UP OUR OFFER in local places so our children, young people, and families can connect with help and support they trust throughout the life course
<ul style="list-style-type: none"> • 2-year-old children benefitting from funded early education • 3- and 4-year-old taking up some free education • Children achieving a Good Level of Development at Foundation Stage (including FSM and SEN) • Children achieving expected standard across all early learning goals at foundation stage • Percentage of new educational health care plans (EHCP) issued within 20 weeks, excluding exceptions • KS2 attainment - attaining at least the expected level against Reading, Writing and Maths • Attainment and Progress 8 (all, disadvantaged and SEN pupils) • Overall absence rate Primary and Secondary • Fixed period exclusions – Primary, Secondary, Special School, and LAC and CIN • Attainment of level 2 and 3 qualifications by the age of 19 • KS4 pupils with SEN support going to, or remaining in education and employment / training 	<ul style="list-style-type: none"> • Vaccinations and immunisations • Prevalence of obesity – Reception and Year 6 • Percentage of physically active children and young people • Access to parks and greenspaces (distance from home) • Re-referral to children's social care within 12 months • Children who become the subject of a Child Protection plan for a second or subsequent time within the last 2 years • Children in care experiencing three or more moves within a year • Children in need subject to a Child Protection Plan who are persistent absentees (6 half term) • Number of children who have been adopted in year or who leave care • Average time between a child coming into care and being placed with an adoptive family (A2) • First time entrants to the youth justice system (per 100,000 children) • Youth violence crime exploitation location count in Birmingham • Domestic Abuse rate over 16 • Under 18s conception rate 	<ul style="list-style-type: none"> • Infant mortality rate • Children aged 2-2 1/2 years receiving AQA-3 • Hospital admissions for asthma under 19 years • Hospital admissions - substance misuse, self-harm, mental health, alcohol-specific conditions • Total numbers of families in Bed and Breakfast over 6 weeks • Care levers in suitable accommodation • Early Help Plans • Number of children and young people with EHCP awaiting specialist placements for more than 12 weeks • Workless households • 19- to 21-year-old care leavers in education, employment, or training • NEET and NEET rate (ages 16-17) Unknown • Youth unemployment levels 18 to 24 • Proportion of people with a learning disability living in their own home or with family • Long-term support needs of younger adults (aged 18-64) met by admission to residential and nursing care home

OUR PARTNERSHIP COMMITMENTS [DIAGRAM]

We will provide bold system leadership.

Our children, young people and families face complex change and challenges. To respond effectively alongside them, and to make Birmingham a great place to grow up, we will work together as leaders across our disciplines and sectors.

In this way, we will set the example for colleagues across all our organisations to collaborate in decisions and actions that will improve outcomes. We will provide bold system leadership that changes the conditions of our children and young people.

We will base our offer to children and young people in the best available evidence.

We know that the effects of disadvantage and adversity in early life can be negative, but we also know that these effects are not universal or irreversible.

We will draw on available evidence, and we will test programmes of support, and learn from the findings.

GOVERNANCE & ALIGNMENT

[Diagrams will show governance arrangements, and strategic alignment]

- Birmingham & Solihull Integrated Care Board – Place Board
- Birmingham Health & Wellbeing Board
- Birmingham Safeguarding Children Partnership
- Birmingham Community Safety Partnership
- Birmingham Safeguarding Adults Board
- Birmingham Reducing Violence Board
- West Midlands Violence Reduction Partnership

We will hold each other to account with support, oversight, and challenge.

We will be driven in all our work by our determination to improve outcomes for children and young people, to tackle the system conditions faced by families and communities, especially in relation to poverty and structural inequalities.

As partners we will actively support and challenge each other to collaborate on the practical steps we need to take to achieve the change.

We will know what difference we make.

We believe that help and support can substantially improve the life changes of our children and young people, if it is delivered to the highest standard with the families who need it most.

We will make use of data, evidence and seek the voice and lived experience of children, young people, and families to understand whether and how our offer has been effective in improving outcomes. We will use this information to influence future decisions and to refine our plan.

- Birmingham City Council Corporate Plan 2022-2026
- Birmingham and Solihull Integrated Care System Ten Year Masterplan
- Learning Disabilities and Autism 10 Year Framework for Change
- Birmingham SEND Strategy 2023-2028 – link when available
- Birmingham Inclusion Strategy 2023-2028 – link when available
- Birmingham Domestic Abuse Strategy