



# East Birmingham Inclusive Growth

March 2022  
Update



## EAST BIRMINGHAM

BIRMINGHAM

## ENGLAND

### WORKING AGE RESIDENTS NOT

PEOPLE LIVING IN AREAS OF

**3x** MORE  
LIKELY  
TO...

RE ADMITTED FOR PREVENTABLE

DIE PREMATURELY FROM

BE IN CONTACT WITH MENTAL

## HAVE A LONG TERM CONDITION

**85.1**  
YEARS

SUTTON FOUR  
OAKS WARD.

**74.9**  
**YEARS**

HEARTLANDS  
WARD

### IMD 2019 by Decile

1 - Most Deprived

2

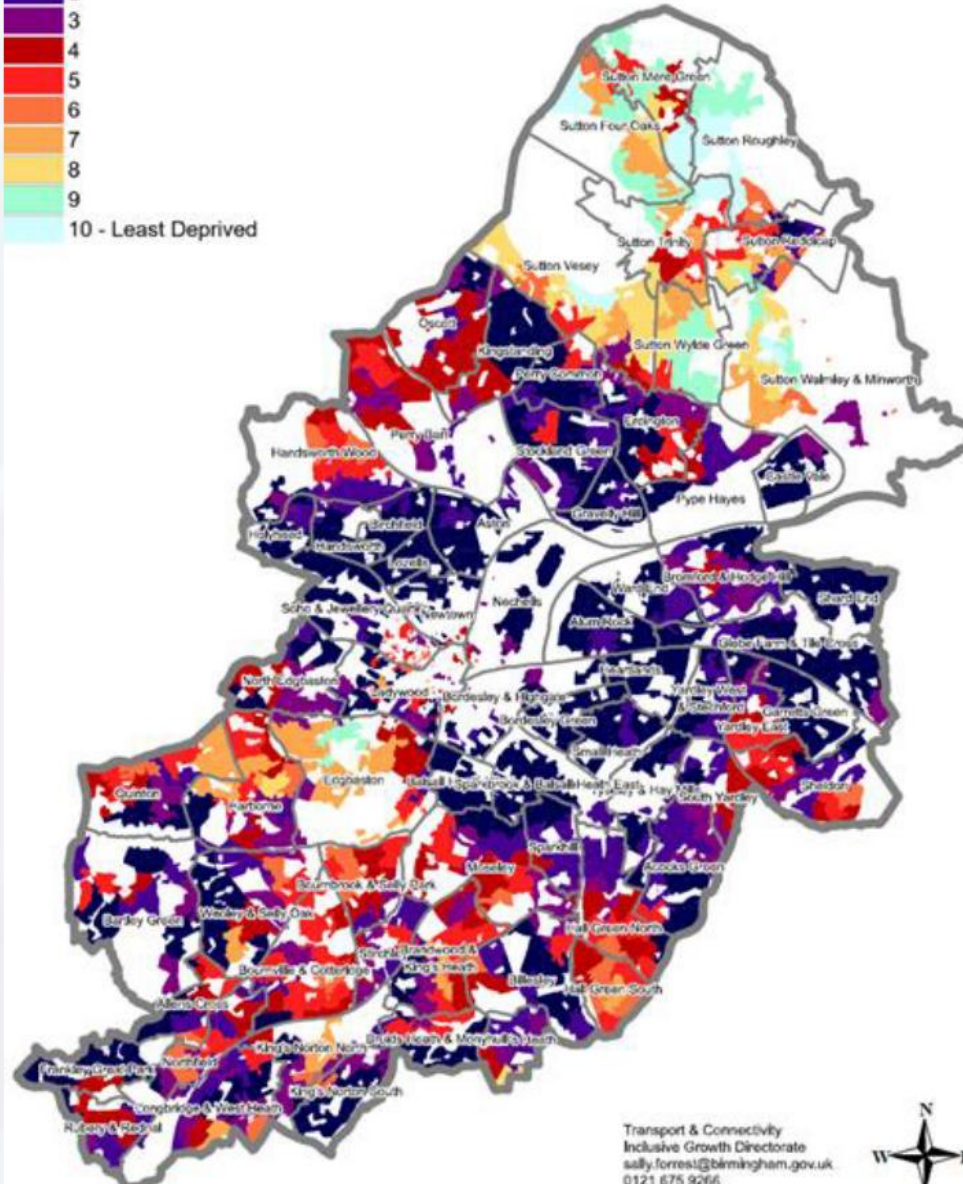
2



88

9

10 - Least Deprived

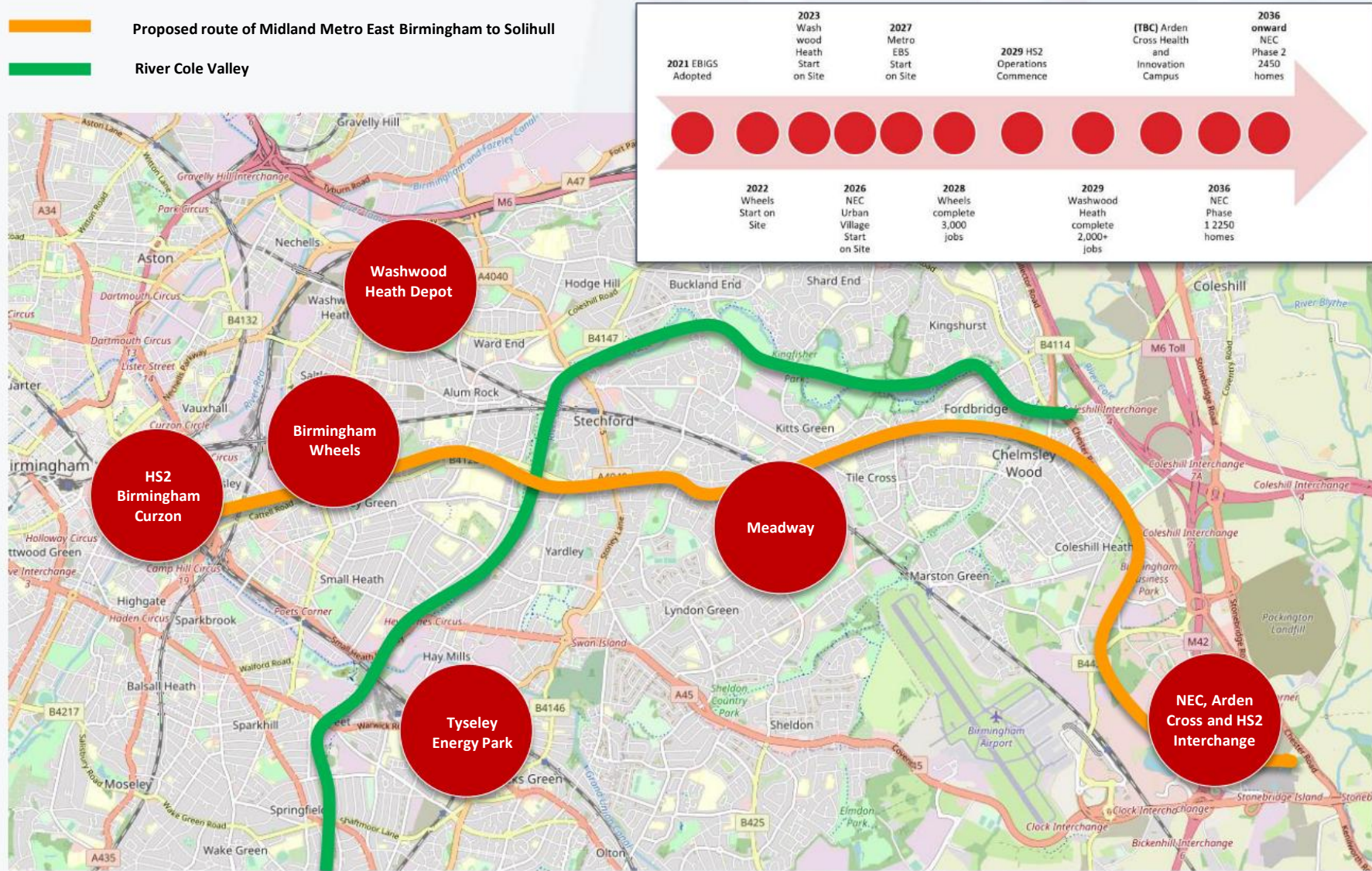


Transport & Connectivity  
Inclusive Growth Directorate  
sally.forrest@birmingham.gov.uk  
0121 675 9266





# East Birmingham Growth Context

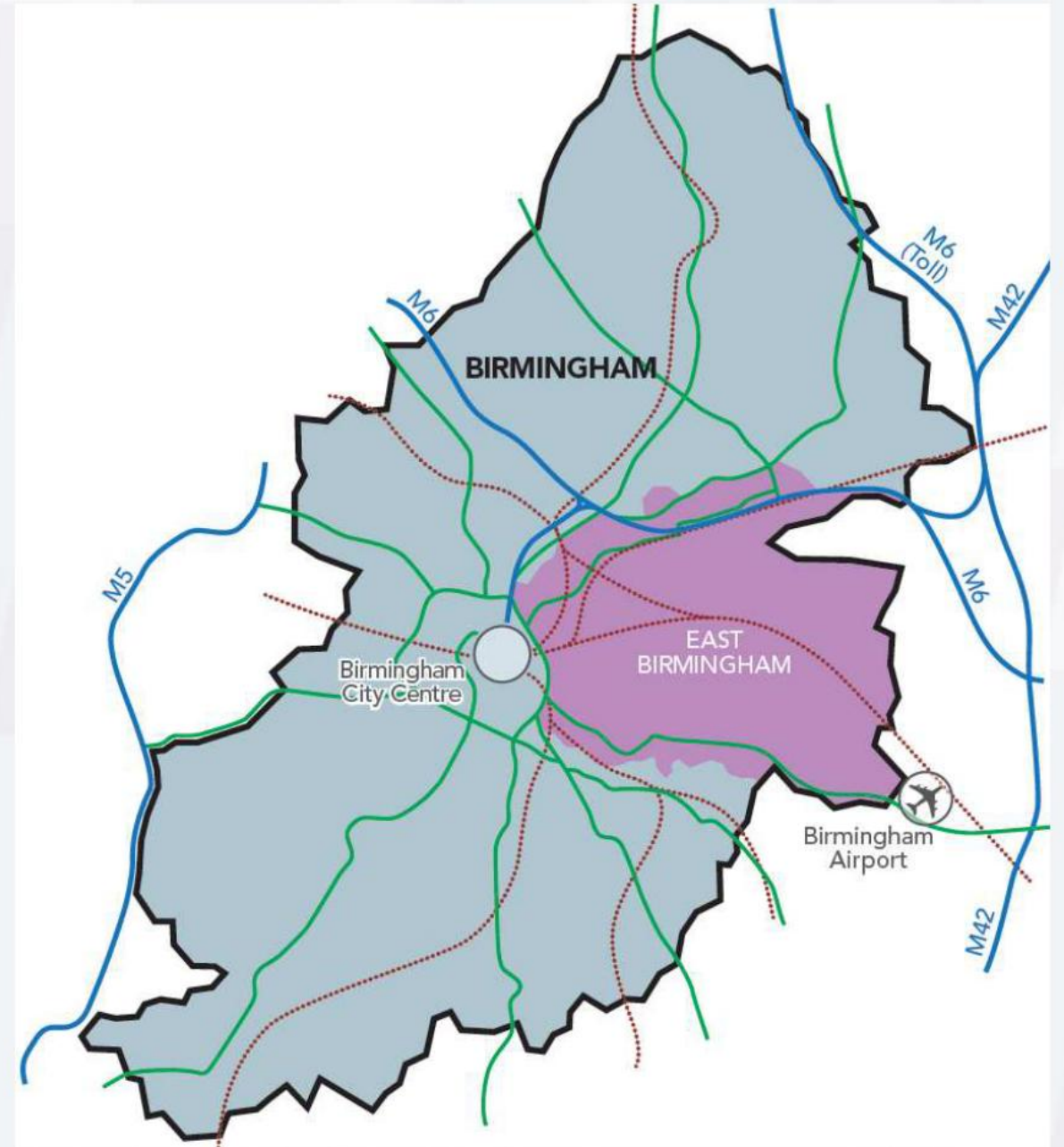


# The Council's Response

The Council's **East Birmingham Inclusive Growth Strategy (2021)** addresses the Birmingham element of the East Birmingham/North Solihull Inclusive Growth corridor which has some of the highest rates of multiple deprivation in the country.

The **East Birmingham Inclusive Growth Programme** has been mobilised to deliver the Strategy. The approach will be holistic and comprehensive, with a strong focus on partnership working across delivery and investment silos

The Programme will be overseen by the **East Birmingham Board** established, chaired by Liam Byrne MP and including a range of strategic partners.





# The East Birmingham Inclusive Growth Strategy

The Council's East Birmingham Inclusive Growth Strategy (2021) addresses the Birmingham element of the East Birmingham/North Solihull Inclusive Growth corridor which has some of the highest rates of multiple deprivation in the country.

Prepared in partnership with the WMCA, Solihull MBC and a wide range of partners and community stakeholders, the Strategy responds to the need to maximise the benefits of HS2 and other major investments to deliver inclusive growth.

It identifies the following key elements:



Improved local services - including health, social care and education.



Business, employment and skills - the expansion of the economy for the benefit of local people.



Local places and green spaces - a joined up approach to development and the physical environment.



Midland Metro East Birmingham to Solihull extension - and the wider connections to the Metro corridor.



Improved heavy rail network – improved existing and new stations and better service frequency.



# Progress Updates March 2022

**23<sup>rd</sup> July 2021**

**East Birmingham Programme Business Case Approved by Cabinet**

Cabinet approved a business case for the establishment of a programme of activity to deliver EBIGS

**November 2021**

**Launch of the Council's Levelling Up Strategy**

Including the identification of East Birmingham as the City's Place-based delivery pilot

**Ongoing**

**Project Development and Delivery**

The development of new projects and the delivery of existing commitments

**Ongoing**

**Programme Governance**

Including meetings of the East Birmingham Board, Ward Members' Forum and Rapid Policy Unit

**February 2022**

**Commencement of recruitment to Programme posts**

Following Job Evaluation recruitment is now underway

# The East Birmingham Programme

An Enhanced Programme Business Case was agreed at July's Cabinet, giving approval to establish a programme team with the budgets it will require to develop and deliver a comprehensive package of projects that will address the full scope of the Strategy vision.

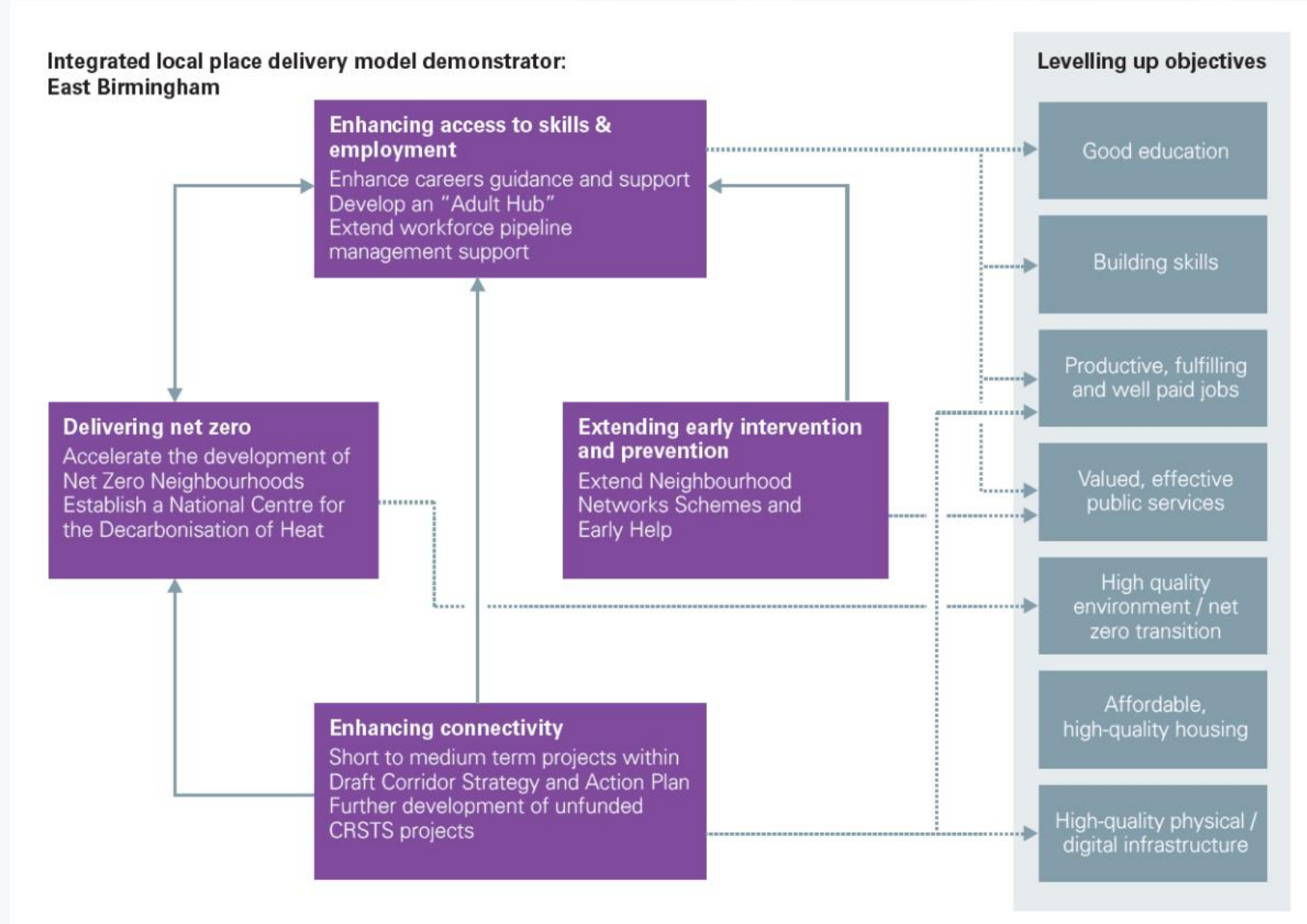
This will include:

- the development of business cases and funding bids
- commissioning of delivery through appropriate routes.
- continuous engagement with stakeholders and the community
- identifying and addressing options to expand the scale of the programme and to make future phases financially self-sustaining.

The intent will be that the programme will support, co-ordinate and maximise the benefits of all Council activity affecting East Birmingham, including joining up with partners to improve outcomes.



# Levelling Up Strategy – East Birmingham





# Project Development and Delivery

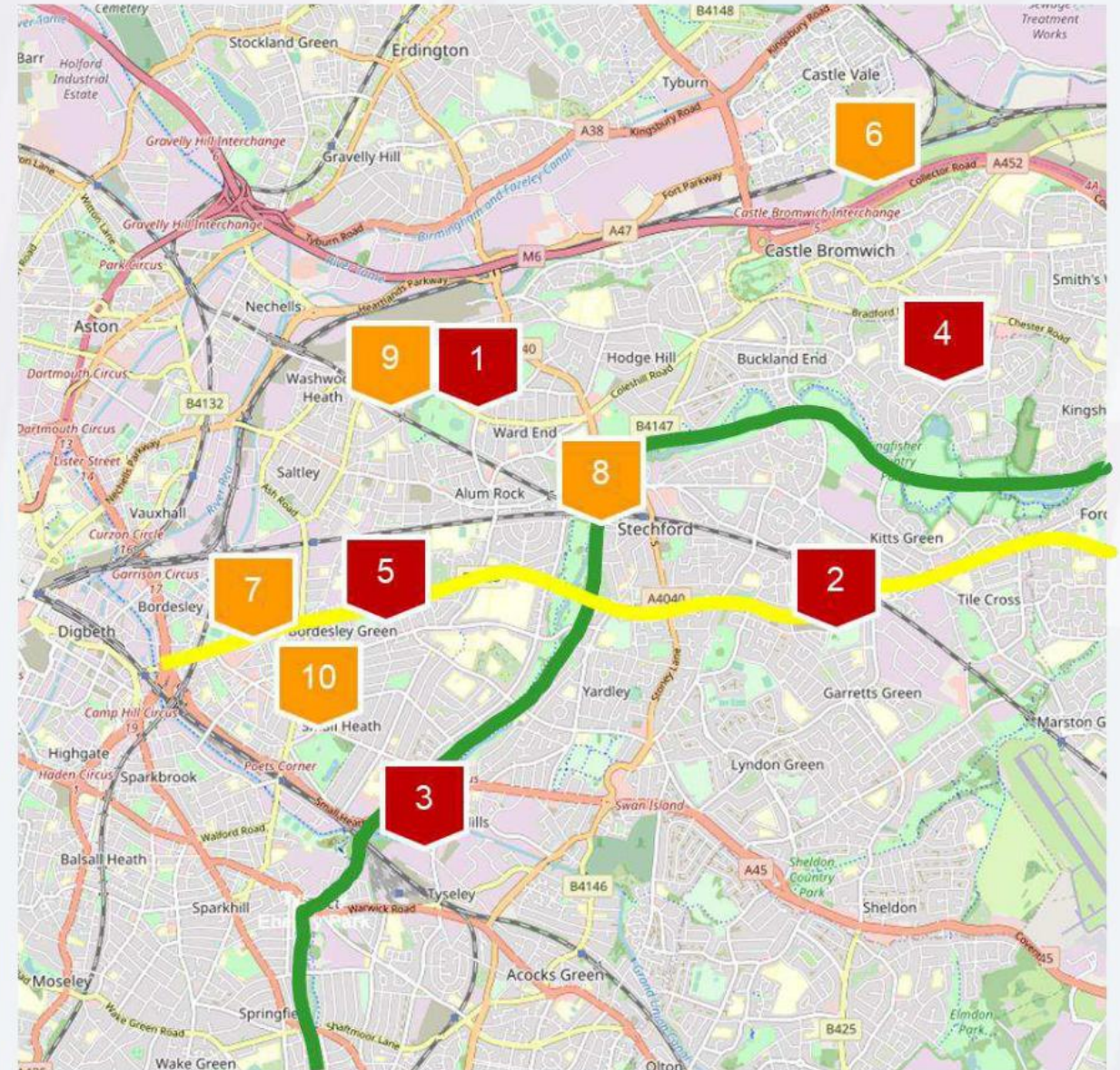
11 Projects have already begun including:

- Planning and development
- Community engagement and development
- Transport
- Research and policy

Many more are in the works.

The Programme will have close links with several other programmes including:

- Route to Zero
- Digital Inclusion strategy
- COVID-19 recovery



# Live Projects

An initial package of 11 projects are already underway, addressing a range of key objective themes. Key areas of activity include:

**Meadway Local Centre** – Feasibility work to inform the creation of new local centre and 100 BMHT homes with the potential for healthcare provision

**Tyseley Clean Energy Masterplan for Growth** – a collaboration with businesses and UoB to further establish Tyseley as a national asset within the green recovery agenda

**EBNS Transport Study** – This study will inform the development of the transport programme in light of the CRSTS settlement

**Dolphin Centre Youth Hub** - Refurbishment of a key community Women's Centre to embed a JCP Employability Coach service

**Green Infrastructure Masterplan:** Bringing together a strategy and delivery plan for green spaces including the Cole Valley, linked with the City of Nature and Future Parks Accelerator

**Housing Delivery Pipeline Study** – In collaboration with Homes England, a review of sites to create a shortlist of opportunities for rapid delivery

**USE-IT** – An innovative project focussed on linking people in local communities with the benefits of growth and the activities of large institutions





# Collaborative working

- Birmingham City Council/Homes England affordable housing delivery pilot which is due to provide a shortlist of sites during early 2022
- The chosen location for the City's Partnerships for People and Place project which will address youth unemployment in partnership with WMCA and GBSLEP
- River Cole Valley and Tyseley Community Commons Project The University of Birmingham, Birmingham City Council, the Active Wellbeing Society and the Environment Agency are collaborating on a £1.2M project seeking to bring a section of the River Cole Valley at Tyseley back in to use as a community commons; a natural, cultural and societal resource that is available and accessible to all members of the surrounding community. The local community and stakeholders will be engaged through a Community Learning Platform approach
- East Birmingham Locality Forum - NHS





# Programme Governance

## East Birmingham Board

- 11<sup>th</sup> November
- 2<sup>nd</sup> February

## Ward Members' Forum

- 7<sup>th</sup> October
- 31<sup>st</sup> January

## Rapid Policy Unit

Fortnightly (ongoing)

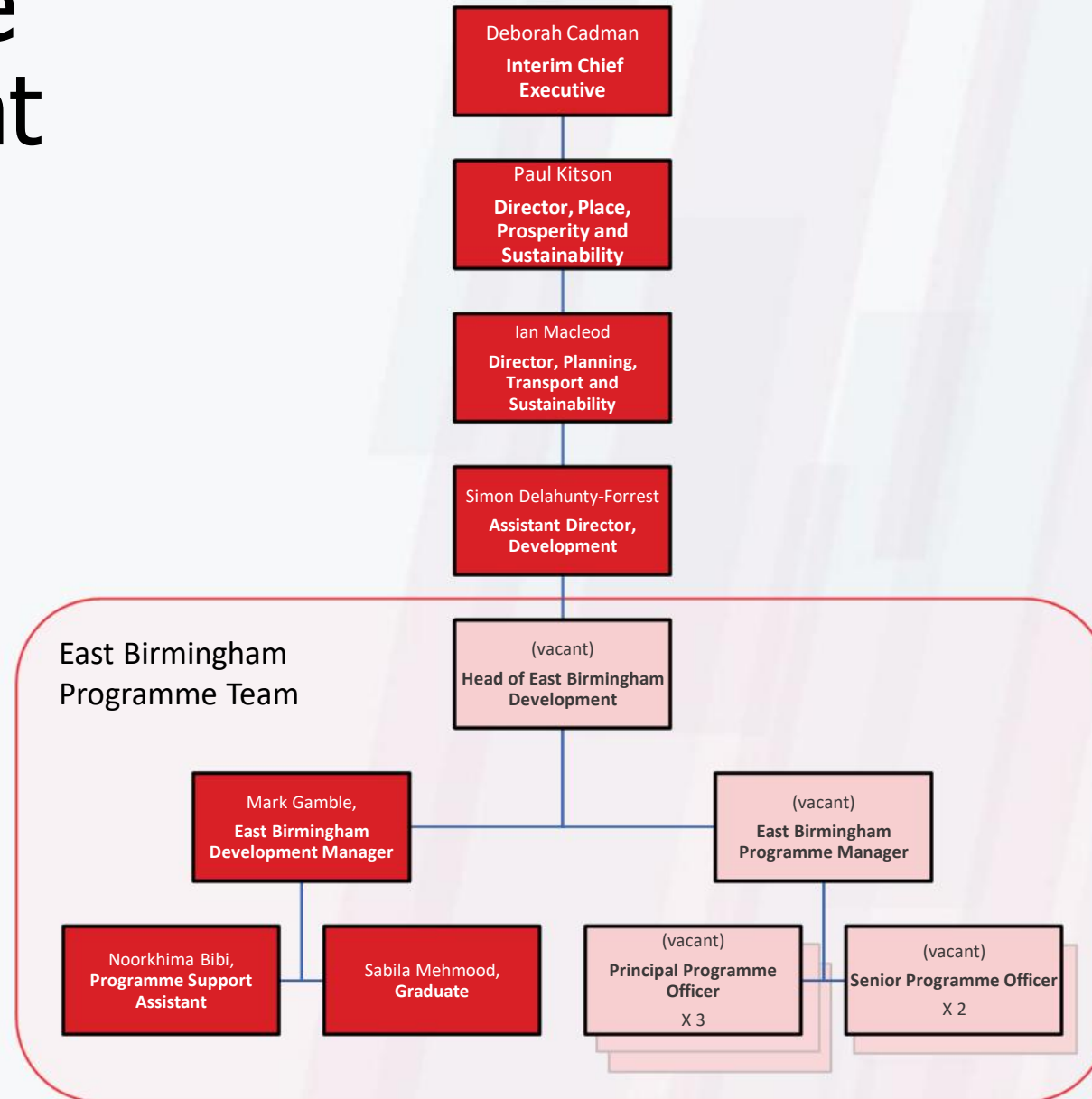
## Programme monitoring and reporting

Projects report to East Birmingham Delivery Board

Programme reports to CPMO via Inclusive Growth Portfolio Board



# Programme Recruitment



# Next Steps: Scope of work

WORKSTREAM		TASKS		OUTPUTS
Mobilisation of Programme Team	➔	<ul style="list-style-type: none"><li>• Confirm resource structure</li><li>• Write JDs/Briefs for required resources</li><li>• Recruit (phased)</li><li>• Induct and mobilise</li></ul>	➔	Additional resources available for delivery of the workplan
Programme Development	➔	<ul style="list-style-type: none"><li>• Develop approach to scaling up of activity in context of corporate Levelling up agenda.</li></ul>	➔	EB levelling up proposals Alignment with funding streams and opportunities
Project Development	➔	<ul style="list-style-type: none"><li>• Develop project business cases within workstreams</li></ul>	➔	Project OBCs & FBCs, funding bids
Project Delivery	➔	<ul style="list-style-type: none"><li>• Delivery of projects in accordance with business cases</li></ul>	➔	Project outputs
Programme Facilitation and ongoing activities	➔	<ul style="list-style-type: none"><li>• Programme Management</li><li>• Community development and engagement</li></ul>	➔	Board Meetings Rapid Policy Unit Community Development





Any Questions?

