



Education and Vulnerable Children O&S Committee
Short Inquiry;
Children Missing from Home and Care
Evidence presented by;
Birmingham Safeguarding Children Board

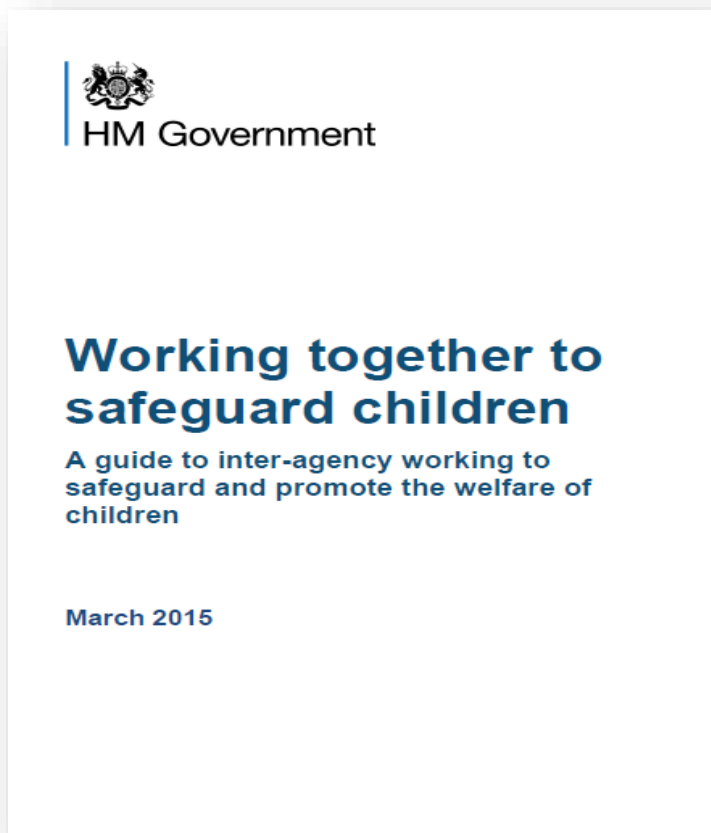


Focus of the session

Areas to be covered
Statutory role of Local Safeguarding Children Boards and National context
Birmingham Safeguarding Children Board - Strategic Priorities in relation to missing children
Strategy, Support and Structure
Accountability, Effectiveness and Outcomes
Missing Operational Group
Key areas for improvement – Annual Report 2014/15
Discussion and Questions



Statutory Functions of LSCBs



Local Safeguarding Children Board statutory functions;

1. Coordination of safeguarding and the promoting the welfare of children in Birmingham; and
2. to ensure the effectiveness of what is done.

Working Together to Safeguard Children



HM Government

Working together to safeguard children

A guide to inter-agency working to safeguard and promote the welfare of children

March 2015

- Local Safeguarding Children Board should conduct regular assessments on the effectiveness of Board partners' responses to child sexual exploitation.
- There is specific reference to data sharing on children missing from care and how the LSCB is addressing the issue



Department for Education - Statutory Guidance – January 2013

Statutory Guidance on Children who run away or go missing from home or care - Role of LSCB

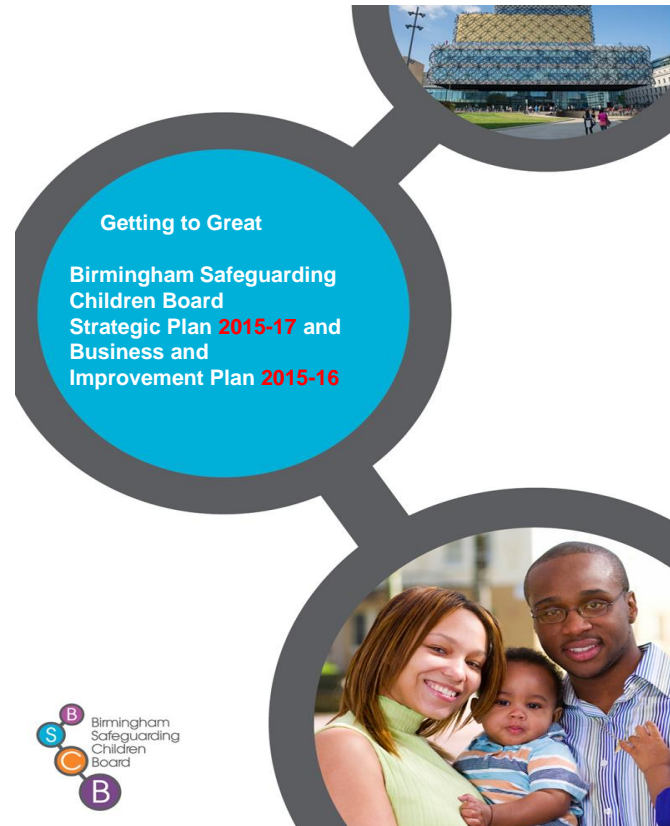
- Evaluate the effectiveness interagency working associated with children missing from home and care
- Up to date Local protocol on runaway and missing from home and care
- Receive and scrutinise regular reports from the Local Authority analysing data on children missing from home and Care
- Provide strategic oversight of the effectiveness of measures to prevent children from going missing from children's homes



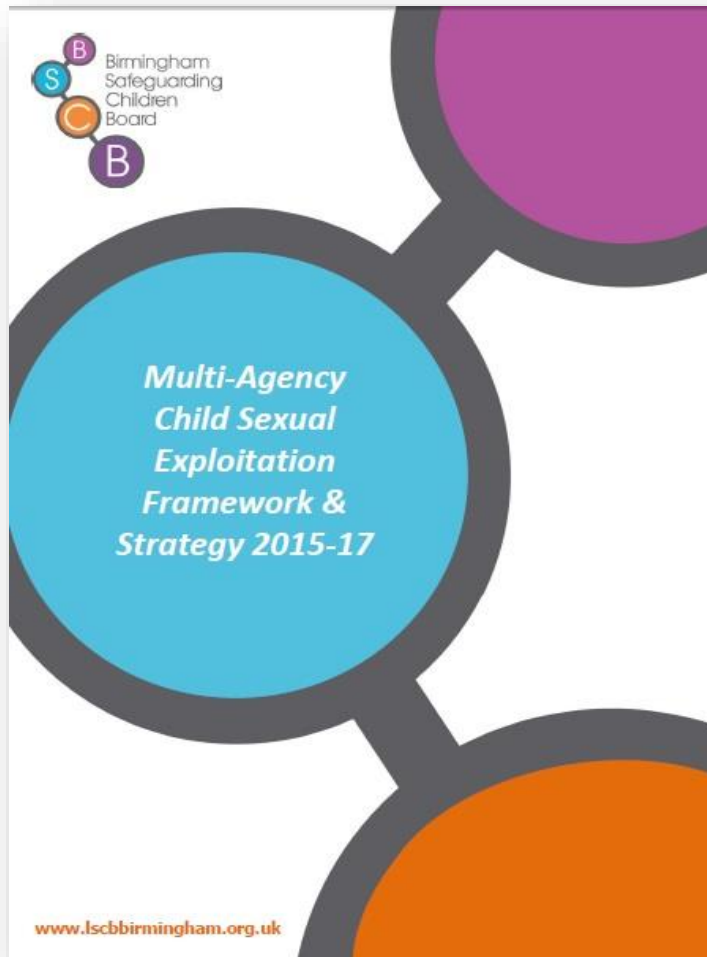
Strategic direction - 'Getting to Great'

Key priorities:

1. Voice of the Child
2. Early Help
3. Safe Systems
 - **CSE**
 - LAC
 - Front Door
 - Strengthening Families



Multi-Agency CSE Framework & Strategy



www.lscbbirmingham.org.uk

Key Strategic Strands

1. Preventing
2. Protecting
3. Preparing to disrupt and target
4. Prosecuting

Sets out implementation of Regional Model (CMOG) in Birmingham

Distinction between Child Sexual Exploitation Operational Group and Missing Operational Group

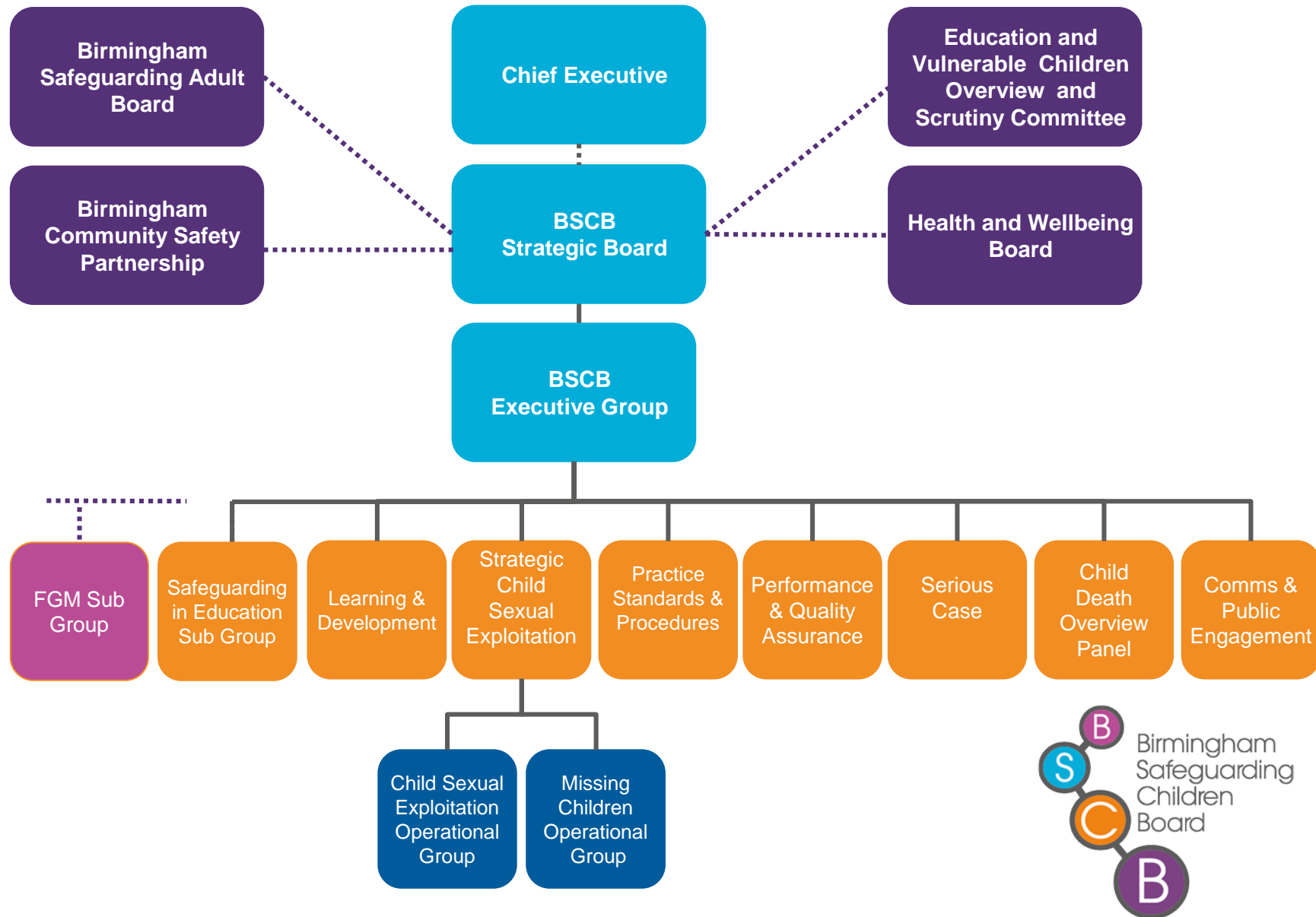


Understanding the needs of a child



1. Guidance for everyone who works with children, young people and their families.
2. It sets out four levels of children's needs:
 - **Universal Needs**
 - **Universal Plus**
 - **Additional Needs**
 - **Complex/Significant Needs**
3. Guiding principles.
4. Defining need – questions to ask yourself.
5. How to access support based on need.

Birmingham Safeguarding Children Board Structure



High Support and High Challenge – LSCB Strategy, Support and Structure

- 3 Year Strategic Plan ‘Getting to Great’ priorities Child Sexual Exploitation and the link to missing children
- Multi-Agency CSE framework and strategy 2015-17 – Revised March 2015
- Established Strategic CSE Sub-Group – Chaired by Alastair Gibbons, Executive Director Children’s Services appointed October 2015
- Child Sexual Exploitation Operation Group – Chaired by Dawn Miskella, Detective Chief Inspector
- Missing Operational Group – Chaired by Tony Stanley, Chief Social Worker appointed October 2015
- West Midlands Metropolitan CSE Regional Framework – updated July 2015 endorsed by the Board
- Missing from Care, Home and Education Multi-Agency Procedures updated September 2015
- Commission multi-agency training – CSE Training offer approved October 2015
- Establishing a network of CSE Champions in each agency



High Support and High Challenge – Accountability, Effectiveness & Outcomes

The Board evaluate the effectiveness interagency working to prevent children from going missing from home, care and education through;

- Monitoring implementation of the Multi-Agency CSE Strategy 2015/17
- The Chair of Strategic CSE Sub-Group is accountable effective delivery of the Multi-Agency CSE Strategy 2015/17 and providing regular reports to the Board
- Chair of MOG is a key member of Strategic CSE Sub-Group to ensure continuity
- The Board ratifies both regional and local Missing from Care, Home and Education Protocol and Procedures
- Scrutinise implementation of the Children's homes regulations amendments from July 2014 with respect to the suitable location of children's homes
- Ensuring effective implementation of the findings of *'We Need to Get it Right' Health Check into the Council's Role in tackling CSE* – Up date to November 2015 Committee
- The Executive Group receives, contributes and scrutinises the West Midlands Regional CSE Assessment
- The Board publishes the BSCB Annual Report 2014/15 – November 2015
- Education & Vulnerable Children O&S Committee – November 2015 Presentation on the BSCB Annual Report 2014/15 to the



Missing Operational Group

The group covers ALL forms of missing children – school, care, education and view. The Core Functions of the MOG;

- Present regular reports to the Strategic CSE Sub-Group on the scale and scope of missing children and the action being undertaken
- Ensuring there are good multi-agency procedures in place – oversee the development of new regional procedures
- Evaluate the outcome and effectiveness of the independent 'Return Interview' process (72 hour) ensuring the timeliness and accuracy of intelligence recorded on Police Intelligence Systems and the child/young person's record.
- Monitor the effectiveness of CSE screening of missing children and appropriate use of pathways to MASE meeting.
- Ensuring each part of the multi-agency system has appropriate single agency procedures in place to address the issue and that these are in place and being used properly
- Collecting and collating intelligence across all categories and ensuring where a child is missing from more than one setting is identified and proper assessments, plans and interventions are put in place via the correct approach (e.g. COG/MASH via MASE or through TAF and CAF processes etc. etc.)
- Identifying practice issues (single and multi-agency) and drawing these to the attention of relevant senior staff to address as well informing the Performance & Quality Assurance Sub-Group audit and scrutiny programme.
- Commissioning and evaluation of multi-agency and single agency training



Documentary evidence for submission

1. BSCB Annual Report 2014/15 - Published November 2015
2. 'Getting to Great' BSCB 3 year Strategic Plan 2015/17
3. Multi-Agency CSE Framework & Strategy 205/17
4. Missing from Care, Home and Education Multi-Agency Procedures updated September 2015
5. Progress Report on 'We Need to Get it Right' – November 2015
6. Right Service Right Time - Delivering effective support for children and families in Birmingham – March 2015



Discussion and Questions?

