

# Covid Vaccination Overview

Data extracted on 29/06/2021



# Key Points

- New Delta variant is now the dominant strain and spreading quite fast across the city.
- NHS data suggests steady increase in hospital and ITU admissions but also a significantly increased burden in primary care.
- Vaccine uptake continues and national target is 70% of all adults vaccinated by next step of the road map. Currently 23/69 wards have achieved this target.

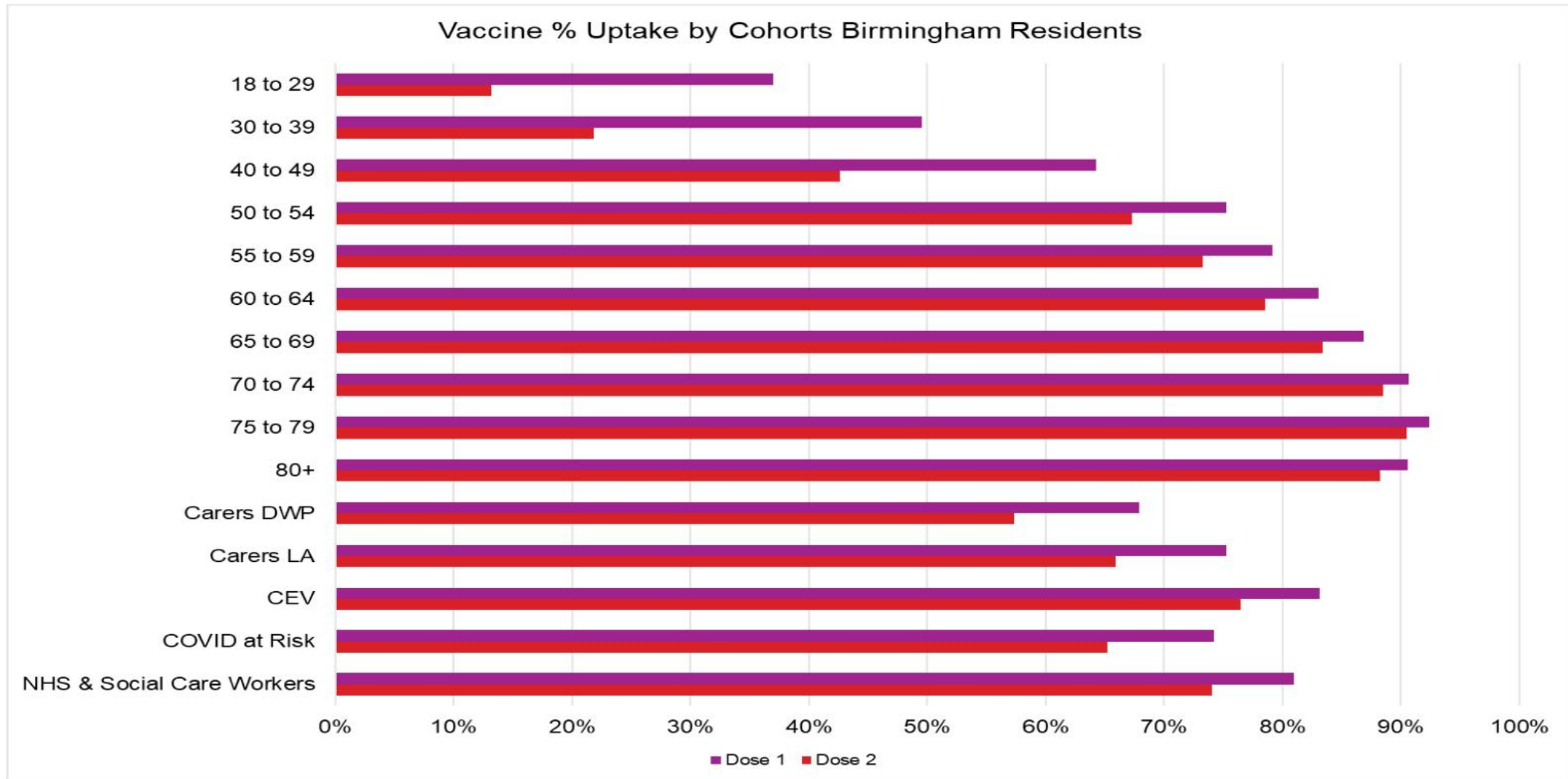
# % Priority Groups Vaccinated

- 18 years and over
  - 1<sup>st</sup> dose – 60%
  - 2<sup>nd</sup> dose – 41%
- 50 years and over
  - 1<sup>st</sup> dose – 83%
  - 2<sup>nd</sup> dose – 78%
- Clinically Extremely Vulnerable
  - 1<sup>st</sup> dose – 83%
  - 2<sup>nd</sup> dose – 76%
- COVID At Risk
  - 1<sup>st</sup> dose – 74%
  - 2<sup>nd</sup> dose – 65%

# Vaccine roll out

- Vaccine roll-out extended on June 18.
- Everyone over the age of 18 in England can now book their Covid-19 vaccine.
- This comes as part of the government's drive to give every adult in England a first dose of the vaccine by July 19.
- The new target brought forward from July 31 will coincide with the easing of the final stage of lockdown.

# Uptake by Cohort in Birmingham Residents – NIMS Data (Extracted 29/06/21)



# Priority Groups currently being called for vaccination: 1<sup>st</sup> dose

Source: NHS NIMS Extracted 29/06/21

Priority	Risk group	% First Dose Uptake				
		NHS Birmingham & Solihull		NHS Sandwell & West Birmingham		Birmingham
		Total	Birmingham	Total	Birmingham	
1	Residents in a care home for older adults and staff working in care homes for older adults	N/A on NIMS				
2	All those 80 years of age and over	93.0%	91.8%	89.8%	81.9%	90.6%
	Frontline health and social care workers *	83.9%	82.6%	77.6%	70.7%	81.0%
3	All those 75 years of age and over	94.2%	93.3%	91.2%	84.9%	92.4%
4	All those 70 years of age and over	93.0%	91.9%	89.4%	81.1%	90.7%
	Clinically extremely vulnerable individuals (not including pregnant women and those under 16 years of age)	86.0%	84.6%	83.8%	76.2%	83.1%
5	All those 65 years of age and over	90.1%	88.6%	85.7%	75.4%	86.9%
	COVID At Risk	78.7%	76.4%	75.5%	63.1%	74.2%
6	All those 60 years and over	87.2%	85.4%	81.4%	68.8%	83.0%
7	All those 55 years of age and over	84.0%	81.8%	77.7%	64.0%	79.1%
8	All those 50 years of age and over	80.3%	77.8%	74.9%	61.7%	75.3%
	All those 40 years of age and over	69.9%	67.0%	64.6%	51.8%	64.2%
	All those 30 years of age and over	55.0%	52.3%	48.8%	38.2%	49.5%
	All those 18 years of age and over	41.3%	39.0%	35.7%	28.5%	37.0%

\* Current significant data issues in denominator definition

# Priority Groups currently being called for vaccination: 2<sup>nd</sup> dose

Source: NHS NIMS Extracted 29/06/21

Priority	Risk group	% Second Dose Uptake				
		NHS Birmingham & Solihull		NHS Sandwell & West Birmingham		Birmingham
		Total	Birmingham	Total	Birmingham	
1	Residents in a care home for older adults and staff working in care homes for older adults	N/A on NIMS				
2	All those 80 years of age and over	91.2%	89.5%	87.4%	78.8%	88.2%
	Frontline health and social care workers *	77.6%	76.1%	70.1%	61.2%	74.1%
3	All those 75 years of age and over	92.7%	91.5%	89.1%	81.8%	90.4%
4	All those 70 years of age and over	91.3%	89.7%	87.4%	78.2%	88.5%
	Clinically extremely vulnerable individuals (not including pregnant women and those under 16 years of age)	80.1%	78.1%	78.0%	68.6%	76.5%
5	All those 65 years of age and over	87.3%	85.3%	82.4%	70.6%	83.4%
	COVID At Risk	70.6%	67.6%	67.0%	52.9%	65.2%
6	All those 60 years and over	83.5%	81.1%	77.0%	63.2%	78.5%
7	All those 55 years of age and over	79.2%	76.3%	71.9%	56.5%	73.3%
8	All those 50 years of age and over	73.5%	70.2%	66.7%	51.6%	67.3%
	All those 40 years of age and over	49.0%	46.1%	37.1%	26.6%	42.6%
	All those 30 years of age and over	25.0%	23.7%	20.1%	14.2%	21.8%
	All those 18 years of age and over	15.0%	14.1%	13.4%	9.4%	13.2%

\* Current significant data issues in denominator definition

# Birmingham Age Cohorts Groups

## Not Vaccinated and Vaccinated 1<sup>st</sup> and 2<sup>nd</sup> dose

Source: NHS NIMS Extracted 29/06/21

Priority Age Groups	Eligible Count	No Vaccine First Dose	No Vaccine Second Dose	Vaccinated Count First Dose	Vaccinated Count Second Dose	Vaccinated Percentage First Dose	Vaccinated Percentage Second Dose
18 - 29	228,581	144,074	198,382	84,507	30,199	36.97%	13.21%
30 - 39	206,919	104,473	161,798	102,446	45,121	49.51%	21.81%
40 - 49	170,491	60,963	97,866	109,528	72,625	64.24%	42.60%
50 - 54	77,957	19,272	25,495	58,685	52,462	75.28%	67.30%
55 - 59	69,411	14,490	18,563	54,921	50,848	79.12%	73.26%
60 - 64	57,632	9,797	12,376	47,835	45,256	83.00%	78.53%
65 - 69	45,371	5,965	7,528	39,406	37,843	86.85%	83.41%
70 - 74	39,046	3,625	4,501	35,421	34,545	90.72%	88.47%
75 - 79	29,326	2,235	2,802	27,091	26,524	92.38%	90.45%
80+	43,719	4,110	5,146	39,609	38,573	90.60%	88.23%



# Birmingham Wards (1)- >18yrs age cohorts

## Not Vaccinated and Vaccinated - 1<sup>st</sup> and 2<sup>nd</sup> dose

Source: NHS NIMS Extracted 29/06/21

Ward	Eligible Count	No Vaccine First Dose	No Vaccine Second Dose	Vaccinated Count First Dose	Vaccinated Count Second Dose	Vaccinated Percentage First Dose	Vaccinated Percentage Second Dose
Acocks Green	17,384	9,952	6,879	10,505	7,432	60.43%	42.75%
Allens Cross	7,603	3,714	2,279	5,324	3,889	70.02%	51.15%
Alum Rock	19,355	14,887	11,634	7,722	4,468	39.89%	23.09%
Aston	18,299	13,855	10,083	8,215	4,444	44.90%	24.28%
Balsall Heath West	8,835	6,383	4,835	4,000	2,452	45.28%	27.75%
Bartley Green	15,732	7,892	5,203	10,529	7,840	66.93%	49.83%
Billesley	14,197	7,074	4,419	9,778	7,123	68.87%	50.17%
Birchfield	9,541	7,177	5,624	3,917	2,364	41.06%	24.77%
Bordesley & Highgate	10,412	8,117	6,038	4,374	2,295	42.01%	22.04%
Bordesley Green	9,884	7,485	5,701	4,183	2,399	42.32%	24.27%
Bournbrook & Selly Park	19,256	14,945	10,330	8,926	4,311	46.36%	22.39%
Bournville & Cotteridge	14,336	6,588	3,886	10,450	7,748	72.89%	54.05%
Brandwood & King's Heath	14,146	6,607	3,686	10,460	7,540	73.94%	53.30%
Bromford & Hodge Hill	14,579	8,822	6,301	8,278	5,758	56.78%	39.49%
Castle Vale	6,711	3,485	2,263	4,448	3,226	66.28%	48.07%
Druids Heath & Monyhull	7,624	3,576	2,297	5,326	4,048	69.87%	53.10%
Edgbaston	20,074	13,930	10,630	9,444	6,144	47.05%	30.61%
Erdington	15,459	7,904	5,217	10,242	7,555	66.25%	48.87%
Frankley Great Park	7,902	3,763	2,290	5,612	4,139	71.02%	52.38%
Garretts Green	7,551	4,366	3,047	4,504	3,185	59.64%	42.18%
Glebe Farm & Tile Cross	15,773	9,317	6,578	9,195	6,456	58.29%	40.93%
Gravelly Hill	8,111	5,239	3,947	4,164	2,872	51.34%	35.41%
Hall Green North	16,548	9,200	6,031	10,516	7,347	63.55%	44.40%

# Birmingham Wards (2)- >18yrs age cohorts

## Not Vaccinated and Vaccinated - 1<sup>st</sup> and 2<sup>nd</sup> dose

Source: NHS NIMS Extracted 29/06/21

Ward	Eligible Count	No Vaccine First Dose	No Vaccine Second Dose	Vaccinated Count First Dose	Vaccinated Count Second Dose	Vaccinated Percentage First Dose	Vaccinated Percentage Second Dose
Hall Green South	7,627	3,092	1,720	5,907	4,535	77.45%	59.46%
Handsworth	9,800	7,331	5,593	4,207	2,469	42.93%	25.20%
Handsworth Wood	14,967	8,886	6,425	8,542	6,081	57.07%	40.63%
Harborne	19,388	10,235	7,022	12,366	9,154	63.78%	47.21%
Heartlands	8,889	6,396	4,796	4,093	2,493	46.04%	28.04%
Hightler's Heath	7,404	3,300	1,975	5,430	4,104	73.33%	55.43%
Holyhead	10,576	8,190	6,549	4,027	2,385	38.08%	22.56%
King's Norton North	7,671	3,325	1,969	5,703	4,346	74.34%	56.65%
King's Norton South	7,793	3,946	2,578	5,216	3,847	66.93%	49.36%
Kingstanding	14,650	7,610	5,104	9,546	7,039	65.16%	48.05%
Ladywood	23,076	18,322	12,683	10,393	4,754	45.04%	20.60%
Longbridge & West Heath	15,331	6,445	3,809	11,522	8,886	75.15%	57.96%
Lozells	8,810	6,642	4,648	4,162	2,168	47.25%	24.61%
Moseley	16,694	8,812	5,652	11,042	7,882	66.14%	47.22%
Nechells	10,358	8,040	6,130	4,228	2,317	40.82%	22.37%
Newtown	10,105	8,328	6,350	3,755	1,777	37.16%	17.58%
North Edgbaston	19,599	13,804	10,560	9,039	5,795	46.12%	29.57%
Northfield	7,898	3,099	1,622	6,276	4,799	79.47%	60.77%
Oscott	14,256	6,513	4,101	10,155	7,743	71.23%	54.31%
Perry Barr	15,772	9,281	6,690	9,082	6,490	57.58%	41.15%
Perry Common	7,932	3,874	2,680	5,252	4,058	66.22%	51.16%
Pype Hayes	7,626	3,816	2,480	5,146	3,811	67.48%	49.97%
Quinton	15,274	7,370	4,414	10,860	7,904	71.10%	51.75%

# Birmingham Wards (3)- >18yrs age cohorts

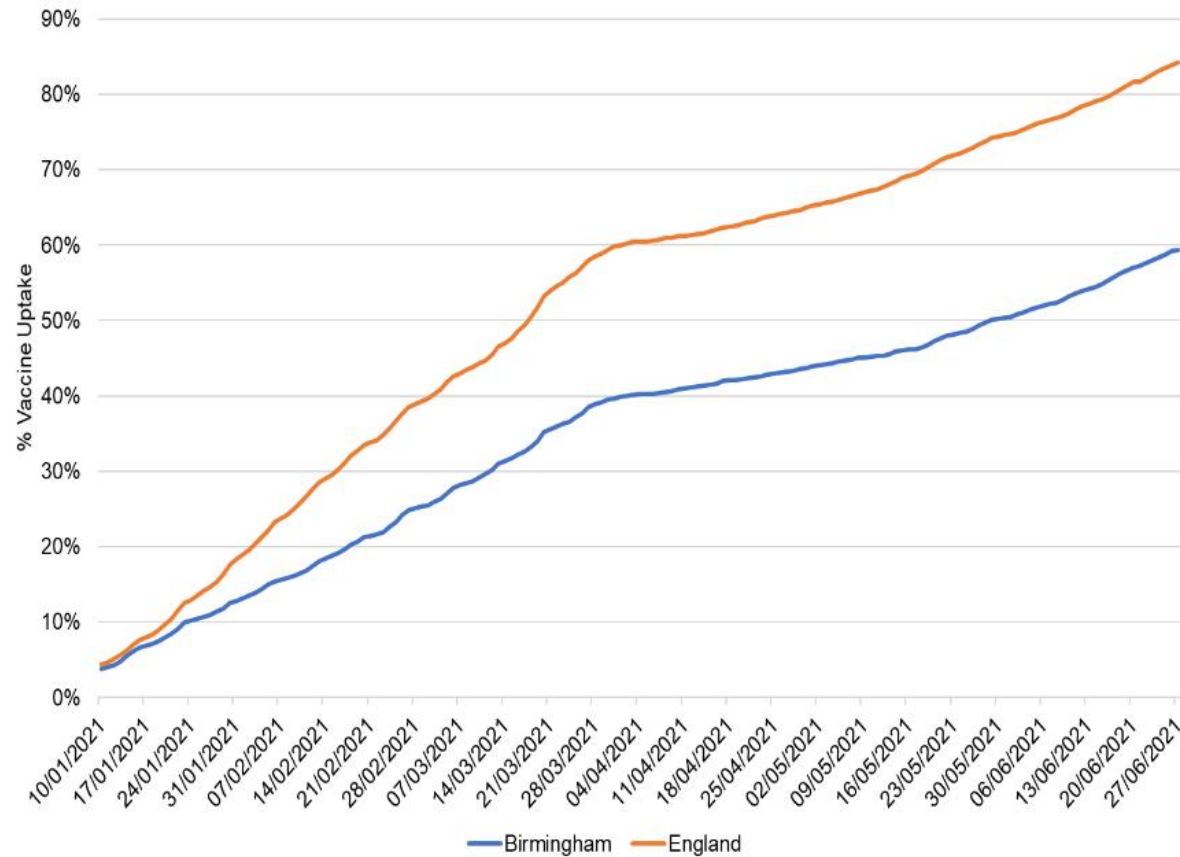
## Not Vaccinated and Vaccinated - 1<sup>st</sup> and 2<sup>nd</sup> dose

Source: NHS NIMS Extracted 29/06/21

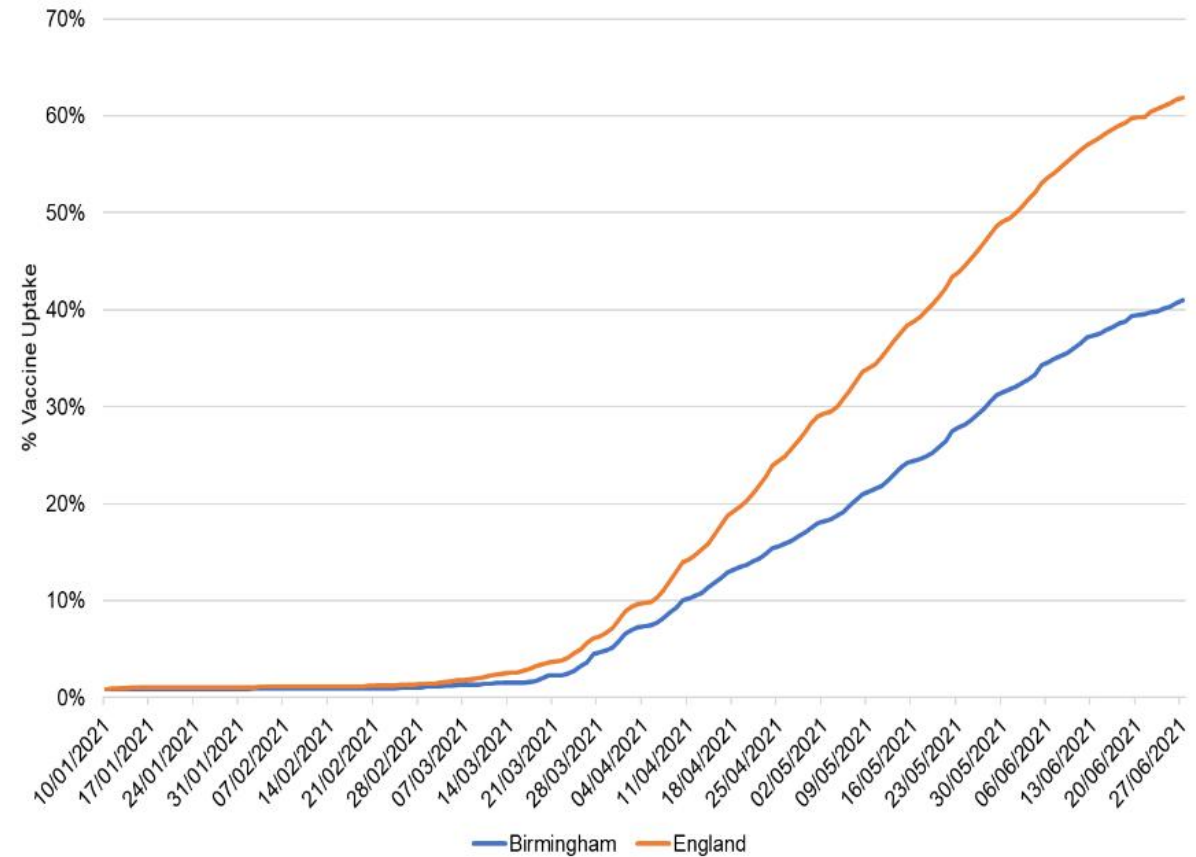
Ward	Eligible Count	No Vaccine First Dose	No Vaccine Second Dose	Vaccinated Count First Dose	Vaccinated Count Second Dose	Vaccinated Percentage First Dose	Vaccinated Percentage Second Dose
Rubery & Rednal	7,031	3,317	1,892	5,138	3,714	73.09%	52.82%
Shard End	8,293	4,286	2,833	5,460	4,007	65.84%	48.32%
Sheldon	13,958	6,114	3,730	10,228	7,844	73.28%	56.20%
Small Heath	15,917	11,620	8,663	7,254	4,297	45.57%	27.00%
Soho & Jewellery Quarter	21,259	16,752	12,110	9,149	4,508	43.04%	21.20%
South Yardley	7,081	3,436	2,130	4,951	3,645	69.92%	51.47%
Sparkbrook & Balsall Heath East	19,265	14,535	11,002	8,263	4,730	42.89%	24.55%
Sparkhill	16,381	12,005	9,006	7,376	4,376	45.02%	26.71%
Stirchley	7,441	3,806	2,101	5,340	3,635	71.76%	48.85%
Stockland Green	17,474	11,035	8,163	9,311	6,439	53.28%	36.85%
Sutton Four Oaks	7,237	2,231	954	6,283	5,007	86.82%	69.18%
Sutton Mere Green	7,687	2,528	1,004	6,684	5,159	86.94%	67.11%
Sutton Reddicap	7,211	3,082	1,594	5,617	4,129	77.90%	57.26%
Sutton Roughley	8,205	2,968	1,173	7,032	5,238	85.70%	63.83%
Sutton Trinity	7,533	2,741	1,169	6,364	4,792	84.48%	63.62%
Sutton Vesey	14,573	5,065	2,341	12,232	9,508	83.94%	65.24%
Sutton Walmley & Minworth	12,414	4,370	1,899	10,515	8,044	84.70%	64.80%
Sutton Wylde Green	7,331	2,412	1,078	6,253	4,919	85.29%	67.10%
Tyseley & Hay Mills	8,663	5,644	4,115	4,548	3,018	52.50%	34.84%
Ward End	9,402	6,760	5,177	4,225	2,642	44.94%	28.10%
Weoley & Selly Oak	17,369	9,667	6,492	10,877	7,702	62.62%	44.34%
Yardley East	7,900	3,777	2,424	5,476	4,123	69.32%	52.19%
Yardley West & Stechford	8,102	4,859	3,426	4,676	3,243	57.72%	40.03%

# Uptake by Date of Vaccination

1st Dose Vaccination Uptake Aged 18+ by Date



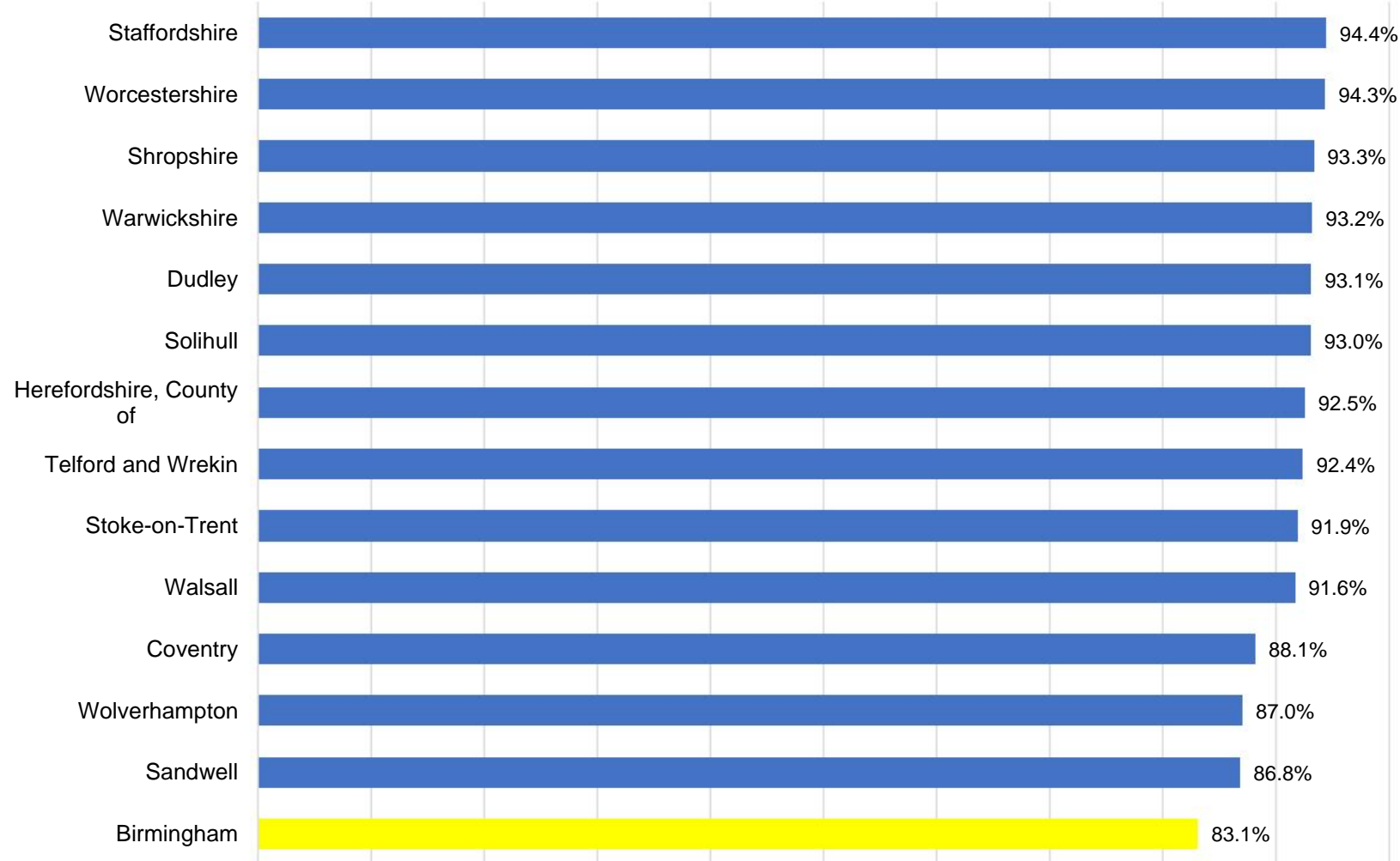
2nd Dose Vaccination Uptake Aged 18+ by Date



Uptake of 1<sup>st</sup> dose has slowed since mid March whilst uptake of 2<sup>nd</sup> dose has accelerated. The rate of uptake in Birmingham is behind the national average for 1<sup>st</sup> and 2<sup>nd</sup> doses. ( 370,572 (38.2%) not vaccinated 1<sup>st</sup> dose, 536,659 (55.3%) not vaccinated 2<sup>nd</sup> dose).

# Uptake in Birmingham vs West Midlands Local Authorities

% 1st Dose Uptake in Population Aged 50+ by West Midlands LA as of 20/06/21



Uptake in of 1<sup>st</sup> dose in the population aged 50+ in Birmingham is lowest when compared with all West Midlands local authorities.

Data Source: NHS

<https://www.england.nhs.uk/statistics/statistical-work-areas/covid-19-vaccinations/>

NB Vaccination uptake percentages should be considered as estimates only. Uptake percentages calculated using the NIMS registered population and are likely to be underestimates.

# Vaccine Uptake by Ward

## 40 lowest uptake wards

(updated 29/06/2021)

- Vaccine uptake is low in some wards that have observed the highest case rates since the start of the pandemic.
- The following wards have low vaccine uptake and high case rates:
  - Newtown
  - Soho & Jewellery Quarter
  - Alum Rock
  - Birchfield
  - Bordesley Green
  - Aston
  - Sparkbrook & Balsall Heath East
  - Lozells
  - Small Heath
  - Balsall Heath West
  - Sparkhill
  - Heartlands
  - Ward End
  - Bromford & Hodge Hill
  - Handsworth Wood

Ward Name	Total Uptake 18+	Total Uptake 50+	Case Rate
Newtown	37.2%	59.1%	10,328
Holyhead	38.1%	60.0%	9,563
Alum Rock	39.9%	67.0%	11,677
Nechells	40.8%	68.6%	8,523
Birchfield	41.1%	64.2%	11,413
Bordesley & Highgate	42.0%	66.3%	8,285
Bordesley Green	42.3%	65.6%	10,716
Sparkbrook & Balsall Heath East	42.9%	67.1%	11,928
Handsworth	42.9%	65.0%	9,966
Soho & Jewellery Quarter	43.0%	62.1%	10,618
Aston	44.9%	67.0%	11,412
Ward End	44.9%	72.4%	11,779
Sparkhill	45.0%	71.0%	12,075
Ladywood	45.0%	65.9%	7,996
Balsall Heath West	45.3%	71.6%	10,521
Small Heath	45.6%	72.3%	11,618
Heartlands	46.0%	72.0%	12,455
North Edgbaston	46.1%	67.6%	9,780
Bournbrook & Selly Park	46.4%	84.2%	10,814
Edgbaston	47.1%	80.6%	9,555
Lozells	47.2%	67.4%	13,987
Gravelly Hill	51.3%	76.4%	9,583
Tyseley & Hay Mills	52.5%	78.8%	9,594
Stockland Green	53.3%	78.2%	8,809
Bromford & Hodge Hill	56.8%	84.4%	12,108
Handsworth Wood	57.1%	80.0%	11,790
Perry Barr	57.6%	82.7%	10,000
Yardley West & Stechford	57.7%	82.7%	10,456
Glebe Farm & Tile Cross	58.3%	83.4%	10,104
Garretts Green	59.7%	83.3%	10,083
Acocks Green	60.5%	83.8%	10,462
Weoley & Selly Oak	62.6%	85.3%	8,385
Hall Green North	63.6%	85.3%	11,607
Harborne	63.8%	84.5%	6,644
Kingstanding	65.2%	85.0%	9,097
Shard End	65.8%	88.6%	10,340
Moseley	66.2%	83.6%	8,988
Perry Common	66.2%	86.0%	9,403
Erdington	66.2%	85.3%	8,805
Castle Vale	66.3%	87.7%	9,662



# North Locality

	% uptake of 1st Dose of Covid Vaccination data extracted 29/06											
Ward Name	Over 80yr olds	75-79yrs	70-74yrs	65-69yrs	60-64yrs	55-59yrs	50-54yrs	40-49yrs	CEV	COVID at Risk	Carers - LA	Carers - DWP
Castle Vale	92.8%	94.9%	93.2%	92.0%	87.7%	84.9%	82.6%	70.4%	89.2%	80.9%	79.2%	71.3%
Erdington	93.7%	94.9%	92.1%	89.4%	84.1%	79.7%	78.0%	67.5%	87.7%	79.5%	76.7%	68.4%
Gravelly Hill	88.3%	89.5%	87.6%	82.7%	76.5%	73.9%	69.0%	56.5%	82.5%	71.0%	74.7%	69.0%
Kingstanding	88.8%	93.9%	90.8%	90.0%	84.8%	83.2%	78.8%	72.5%	87.9%	78.8%	79.3%	75.4%
Perry Common	92.2%	93.4%	90.1%	89.6%	86.4%	81.5%	80.1%	68.7%	85.5%	76.7%	78.0%	73.1%
Pype Hayes	92.7%	93.4%	91.5%	88.9%	87.9%	82.3%	80.5%	69.9%	88.4%	80.0%	77.8%	70.2%
Stockland Green	88.0%	89.2%	88.3%	85.0%	80.1%	74.3%	69.6%	58.3%	82.2%	70.9%	76.8%	67.7%
Sutton Four Oaks	95.9%	97.6%	96.5%	95.9%	93.1%	94.1%	93.4%	86.5%	96.7%	91.2%	82.6%	85.2%
Sutton Mere Green	97.3%	98.0%	96.5%	96.1%	92.9%	92.0%	92.7%	87.4%	94.5%	90.5%	88.7%	86.6%
Sutton Reddicap	94.0%	97.5%	94.7%	91.8%	90.6%	87.3%	87.4%	80.9%	93.2%	85.5%	86.8%	68.5%
Sutton Roughley	96.0%	96.8%	96.6%	95.1%	92.9%	93.2%	91.1%	86.1%	95.2%	91.9%	89.4%	79.8%
Sutton Trinity	97.2%	94.5%	95.4%	94.5%	93.8%	90.0%	89.7%	83.1%	95.5%	90.4%	91.1%	75.4%
Sutton Vesey	96.0%	96.0%	96.5%	93.9%	91.6%	89.1%	87.2%	84.9%	94.2%	88.9%	87.4%	80.3%
Sutton Walmley & Minworth	95.1%	95.7%	96.7%	95.3%	93.5%	90.4%	89.0%	85.0%	94.2%	91.0%	83.3%	79.2%
Sutton Wylde Green	97.3%	95.8%	96.0%	94.5%	93.1%	91.0%	90.3%	84.6%	95.2%	89.6%	95.6%	90.7%

# East Locality

	% uptake of 1st Dose of Covid Vaccination data extracted 29/06											
Ward Name	Over 80yr olds	75-79yrs	70-74yrs	65-69yrs	60-64yrs	55-59yrs	50-54yrs	40-49yrs	CEV	COVID at Risk	Carers - LA	Carers - DWP
Acocks Green	91.9%	91.9%	90.4%	86.4%	84.3%	82.3%	78.0%	65.1%	85.1%	77.7%	75.3%	73.0%
Alum Rock	72.5%	77.6%	78.1%	72.8%	72.3%	65.4%	63.6%	52.9%	72.6%	60.5%	70.0%	60.3%
Bromford & Hodge Hill	93.5%	94.3%	91.4%	88.7%	83.6%	81.0%	74.8%	64.9%	81.3%	72.1%	74.1%	65.9%
Garretts Green	90.4%	92.4%	90.9%	83.8%	81.5%	81.5%	78.9%	66.3%	84.0%	74.8%	76.9%	67.7%
Glebe Farm & Tile Cross	91.6%	92.1%	89.5%	88.7%	82.2%	80.9%	75.3%	65.5%	79.5%	72.3%	72.6%	65.4%
Heartlands	81.5%	83.6%	80.9%	78.8%	71.8%	69.2%	70.2%	58.6%	76.1%	66.5%	74.2%	62.9%
Shard End	93.7%	94.2%	94.6%	90.9%	90.8%	85.2%	82.5%	69.8%	88.4%	78.6%	71.6%	68.5%
Sheldon	94.1%	96.2%	94.2%	93.3%	90.1%	87.6%	85.7%	76.0%	88.0%	83.5%	79.9%	73.0%
Small Heath	79.4%	83.7%	82.5%	79.6%	78.6%	69.1%	68.4%	57.9%	79.0%	67.0%	69.7%	66.7%
South Yardley	92.5%	94.7%	91.5%	90.9%	88.1%	85.2%	83.1%	74.2%	85.4%	81.8%	88.6%	77.1%
Tyseley & Hay Mills	85.3%	87.4%	87.2%	83.9%	81.8%	79.6%	70.9%	59.6%	83.0%	72.3%	71.2%	68.2%
Ward End	84.2%	84.2%	77.9%	80.8%	75.0%	68.8%	68.0%	57.7%	74.6%	65.5%	66.3%	61.9%
Yardley East	94.7%	95.4%	95.8%	92.3%	91.3%	86.1%	84.9%	71.2%	88.9%	79.7%	80.4%	74.7%
Yardley West & Stechford	89.7%	91.9%	90.7%	88.1%	86.4%	79.1%	74.0%	67.7%	83.4%	73.5%	74.5%	70.3%



# South Locality

	% uptake of 1st Dose of Covid Vaccination data extracted 29/06											
Ward Name	Over 80yr olds	75-79yrs	70-74yrs	65-69yrs	60-64yrs	55-59yrs	50-54yrs	40-49yrs	CEV	COVID at Risk	Carers - LA	Carers - DWP
Allens Cross	95.3%	95.0%	93.5%	91.4%	88.9%	83.5%	81.5%	72.4%	90.0%	83.0%	85.0%	70.0%
Bartley Green	92.1%	95.6%	94.3%	89.7%	87.5%	83.8%	79.9%	70.6%	86.1%	78.6%	81.2%	72.9%
Edgbaston	89.0%	89.7%	90.3%	84.2%	76.8%	76.6%	71.6%	47.5%	84.4%	74.8%	80.3%	58.8%
Frankley Great Park	95.3%	97.0%	95.5%	91.5%	91.7%	85.6%	80.8%	76.0%	88.0%	80.6%	78.6%	67.4%
Harborne	92.6%	92.8%	91.5%	89.1%	83.3%	80.9%	75.2%	64.7%	87.3%	79.7%	84.0%	67.6%
King's Norton North	95.3%	95.0%	94.8%	91.8%	89.8%	88.4%	84.8%	76.1%	90.0%	82.9%	81.7%	65.6%
King's Norton South	95.4%	94.0%	92.7%	89.4%	87.4%	82.5%	78.8%	70.7%	87.7%	76.6%	77.8%	65.8%
Longbridge & West Heath	96.3%	95.4%	94.9%	92.4%	90.8%	87.7%	85.2%	77.7%	92.0%	81.6%	85.0%	69.5%
Northfield	96.3%	98.3%	97.3%	91.4%	91.8%	90.4%	85.9%	81.1%	91.8%	86.1%	87.8%	75.5%
Quinton	93.2%	94.1%	92.5%	90.6%	88.8%	85.1%	82.7%	72.6%	88.7%	81.7%	83.3%	73.1%
Rubery & Rednal	94.8%	97.3%	94.7%	91.2%	89.6%	87.1%	84.6%	76.0%	90.6%	80.2%	79.3%	66.5%
Weoley & Selly Oak	95.3%	93.9%	91.2%	88.2%	84.6%	82.0%	76.9%	63.1%	87.6%	76.9%	76.9%	68.1%

# West Locality

	% uptake of 1st Dose of Covid Vaccination data extracted 29/06											
Ward Name	Over 80yr olds	75-79yrs	70-74yrs	65-69yrs	60-64yrs	55-59yrs	50-54yrs	40-49yrs	CEV	COVID at Risk	Carers - LA	Carers - DWP
Aston	77.2%	81.1%	75.2%	75.7%	69.7%	62.4%	63.9%	56.2%	77.1%	64.2%	72.8%	66.5%
Birchfield	74.5%	81.9%	80.4%	73.7%	63.3%	58.6%	60.6%	48.5%	74.3%	58.9%	64.2%	58.6%
Bordesley & Highgate	76.7%	79.9%	81.4%	70.3%	69.6%	64.4%	61.4%	54.3%	72.4%	58.1%	62.9%	59.7%
Bordesley Green	78.4%	78.9%	77.0%	72.2%	70.4%	63.1%	61.2%	53.4%	75.2%	62.7%	66.4%	63.8%
Handsworth	77.1%	85.4%	83.8%	76.4%	65.0%	59.3%	60.4%	51.9%	78.9%	61.7%	67.4%	62.7%
Handsworth Wood	88.9%	88.3%	88.4%	86.7%	78.7%	76.7%	72.9%	61.7%	83.1%	72.3%	74.0%	66.7%
Holyhead	80.0%	79.7%	72.0%	68.4%	63.5%	57.7%	51.6%	44.9%	75.7%	58.8%	61.7%	52.9%
Ladywood	82.4%	77.8%	75.8%	70.8%	68.3%	64.1%	60.6%	47.5%	73.6%	65.0%	60.7%	58.4%
Lozells	79.8%	77.8%	81.6%	73.5%	64.7%	66.3%	65.7%	61.3%	79.9%	61.3%	69.7%	71.9%
Nechells	80.5%	83.3%	87.8%	74.5%	71.0%	64.8%	61.5%	57.4%	74.3%	63.4%	66.1%	64.5%
Newtown	77.2%	77.1%	69.6%	62.0%	57.4%	56.2%	56.5%	49.4%	66.0%	51.8%	54.5%	60.7%
North Edgbaston	79.2%	88.0%	84.5%	77.7%	67.9%	64.0%	58.6%	49.0%	76.3%	65.2%	63.1%	59.9%
Oscott	94.7%	92.3%	91.7%	91.9%	87.7%	86.4%	84.3%	75.0%	88.6%	81.9%	77.6%	74.8%
Perry Barr	91.5%	94.7%	90.5%	84.5%	83.0%	76.8%	74.0%	62.3%	83.9%	72.5%	74.7%	68.6%
Soho & Jewellery Quarter	77.1%	81.5%	77.0%	69.3%	64.9%	58.3%	57.3%	48.0%	73.7%	59.9%	67.7%	60.3%

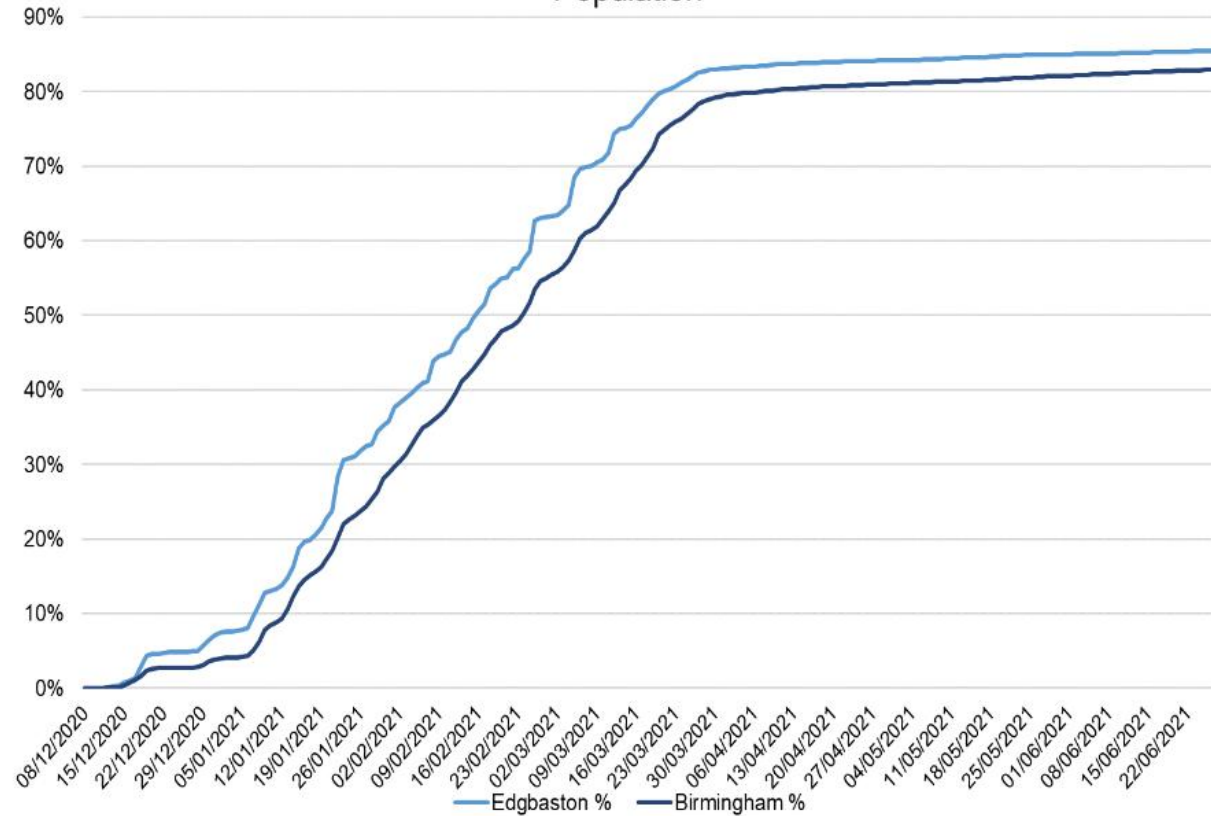
# Central Locality

	% uptake of 1st Dose of Covid Vaccination data extracted 29/06											
Ward Name	Over 80yr olds	75-79yrs	70-74yrs	65-69yrs	60-64yrs	55-59yrs	50-54yrs	40-49yrs	CEV	COVID at Risk	Carers - LA	Carers - DWP
Balsall Heath West	79.0%	90.5%	83.7%	76.0%	73.5%	67.8%	65.1%	54.4%	76.3%	59.1%	54.7%	68.4%
Billesley	94.2%	93.5%	91.5%	88.8%	89.3%	83.3%	80.5%	73.3%	88.1%	80.1%	77.1%	70.4%
Bournbrook & Selly Park	93.7%	95.3%	93.1%	92.5%	83.5%	82.8%	70.3%	42.4%	87.1%	77.6%	71.4%	68.3%
Bournville & Cotteridge	94.5%	96.3%	95.0%	91.0%	91.4%	86.1%	84.2%	75.6%	90.5%	85.4%	82.1%	69.2%
Brandwood & King's Heath	93.8%	93.7%	92.4%	91.5%	87.9%	87.1%	83.5%	76.0%	89.2%	82.8%	86.4%	72.7%
Druids Heath & Monyhull	96.2%	92.8%	93.2%	91.4%	89.6%	84.0%	82.8%	76.1%	90.2%	77.9%	86.7%	69.7%
Hall Green North	90.1%	93.0%	93.6%	89.4%	85.2%	83.7%	76.8%	69.2%	85.5%	74.4%	74.7%	70.6%
Hall Green South	94.8%	96.4%	96.6%	93.0%	91.1%	89.4%	86.5%	81.5%	90.9%	85.6%	88.8%	83.1%
Highter's Heath	92.6%	95.5%	93.0%	93.4%	89.8%	89.7%	88.4%	76.7%	90.0%	84.5%	84.1%	72.8%
Moseley	91.3%	91.7%	90.6%	88.7%	83.8%	79.6%	74.9%	67.8%	83.7%	74.8%	73.7%	66.8%
Sparkbrook & Balsall Heath East	74.0%	79.9%	77.9%	76.2%	71.2%	66.0%	61.4%	52.9%	74.0%	58.7%	64.5%	59.8%
Sparkhill	82.8%	82.1%	77.5%	78.3%	72.4%	69.8%	64.5%	53.6%	76.4%	62.6%	69.8%	65.9%
Stirchley	93.3%	94.8%	91.1%	89.2%	89.0%	84.1%	83.8%	73.8%	89.1%	82.0%	80.6%	70.3%

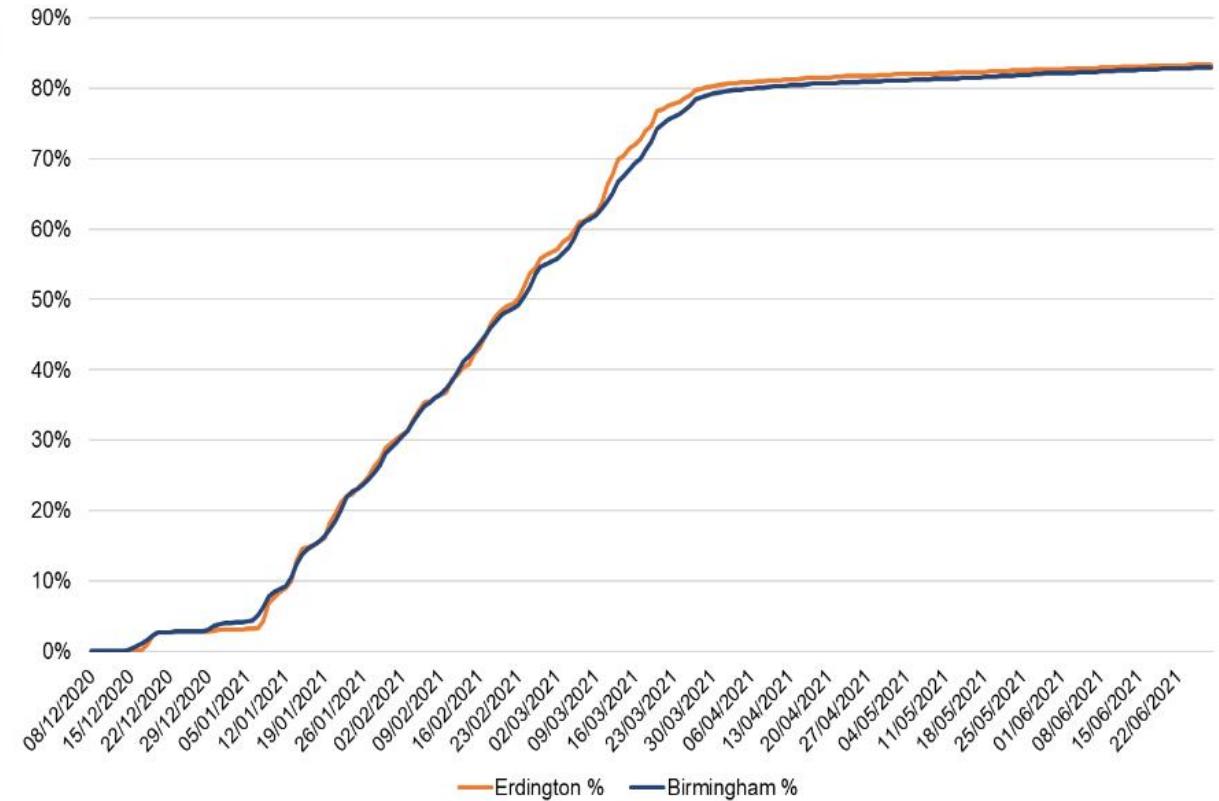


# Uptake Progress by Constituency (updated 29/06/2021)

Covid Vaccination % 1st Dose Uptake by Constituency in Age 50+ Population

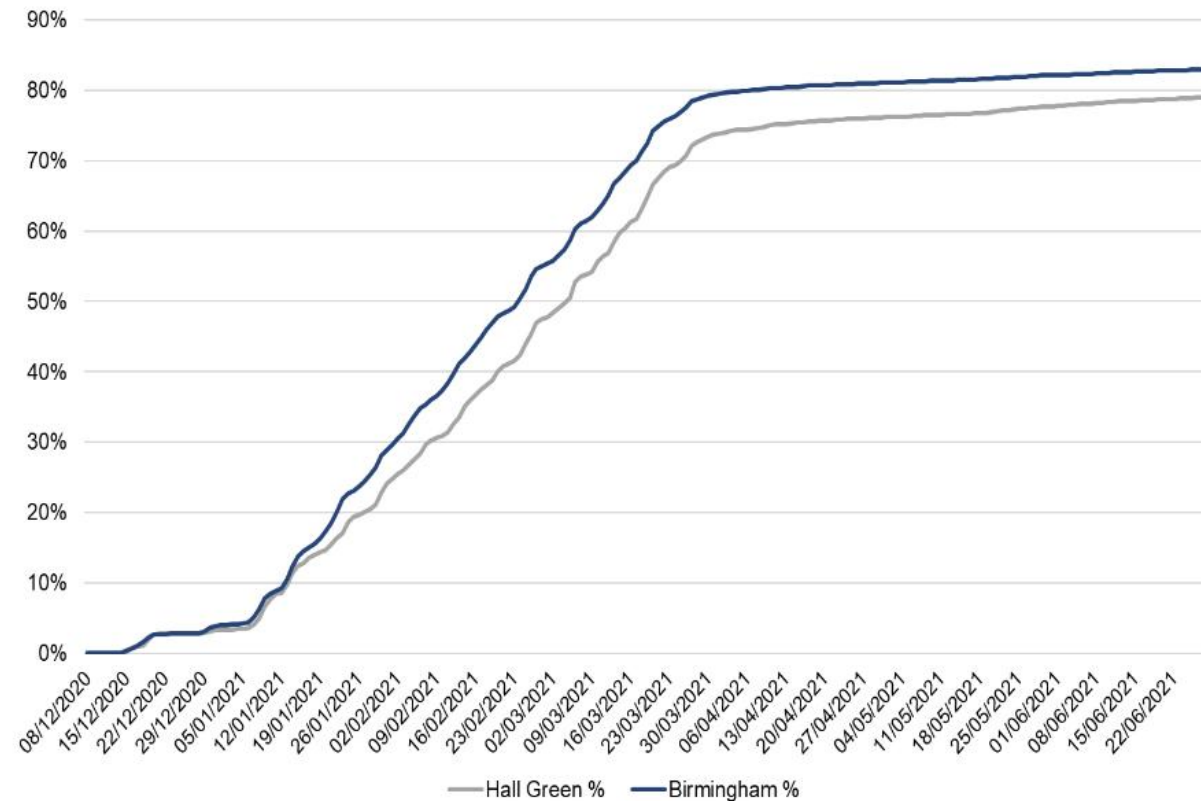


Covid Vaccination % 1st Dose Uptake by Constituency in Age 50+ Population

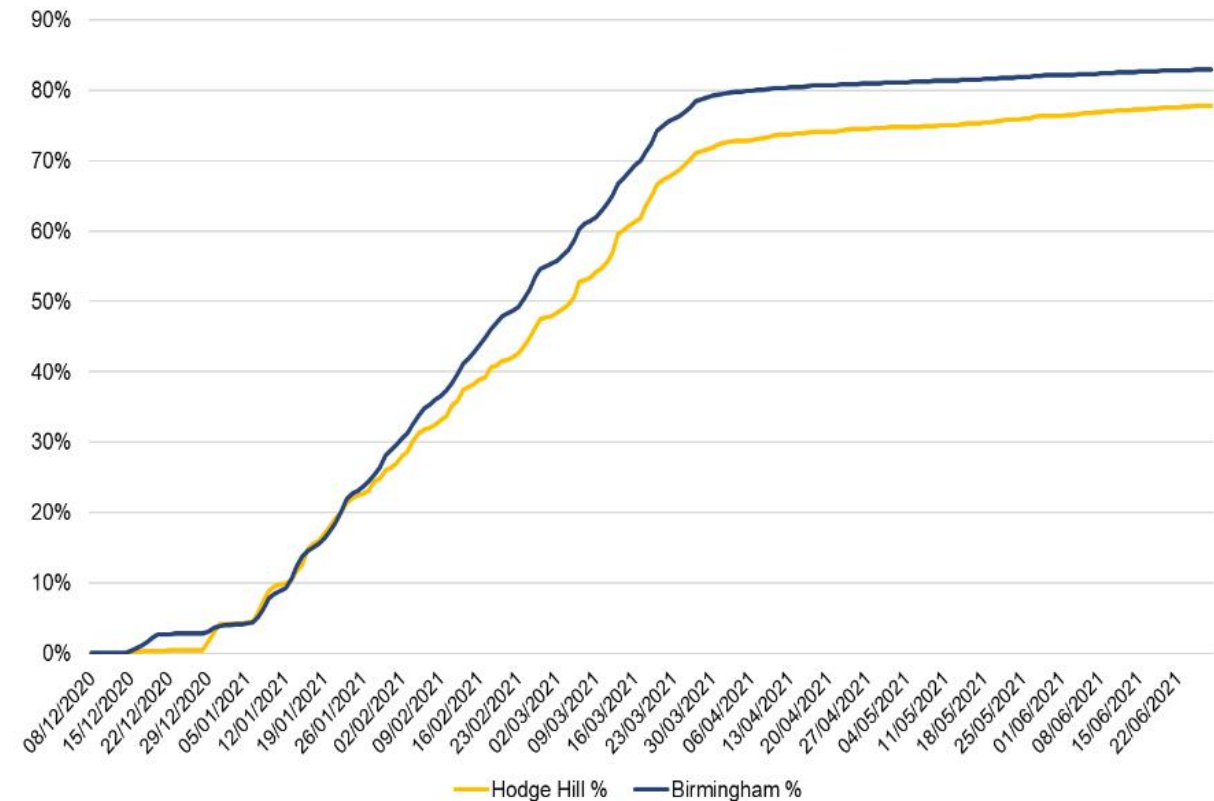


# Uptake Progress by Constituency (updated 29/06/2021)

Covid Vaccination % 1st Dose Uptake by Constituency in Age 50+ Population

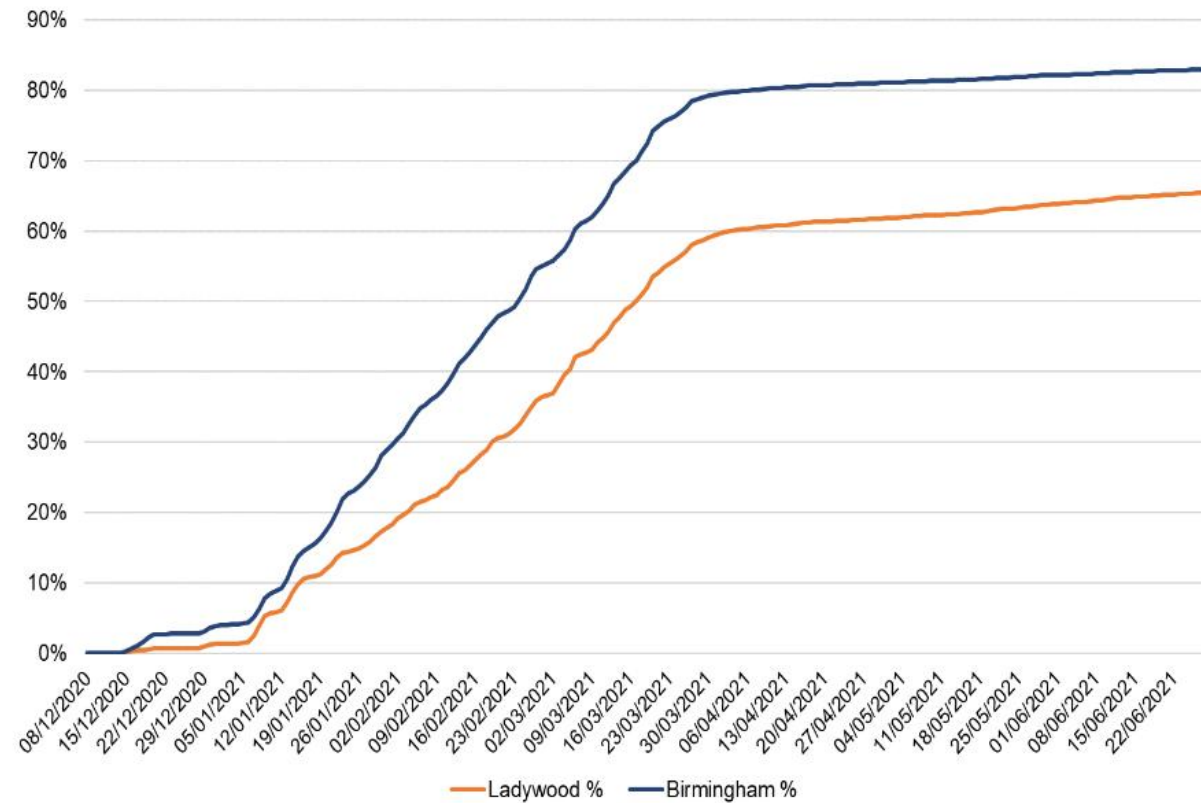


Covid Vaccination % 1st Dose Uptake by Constituency in Age 50+ Population

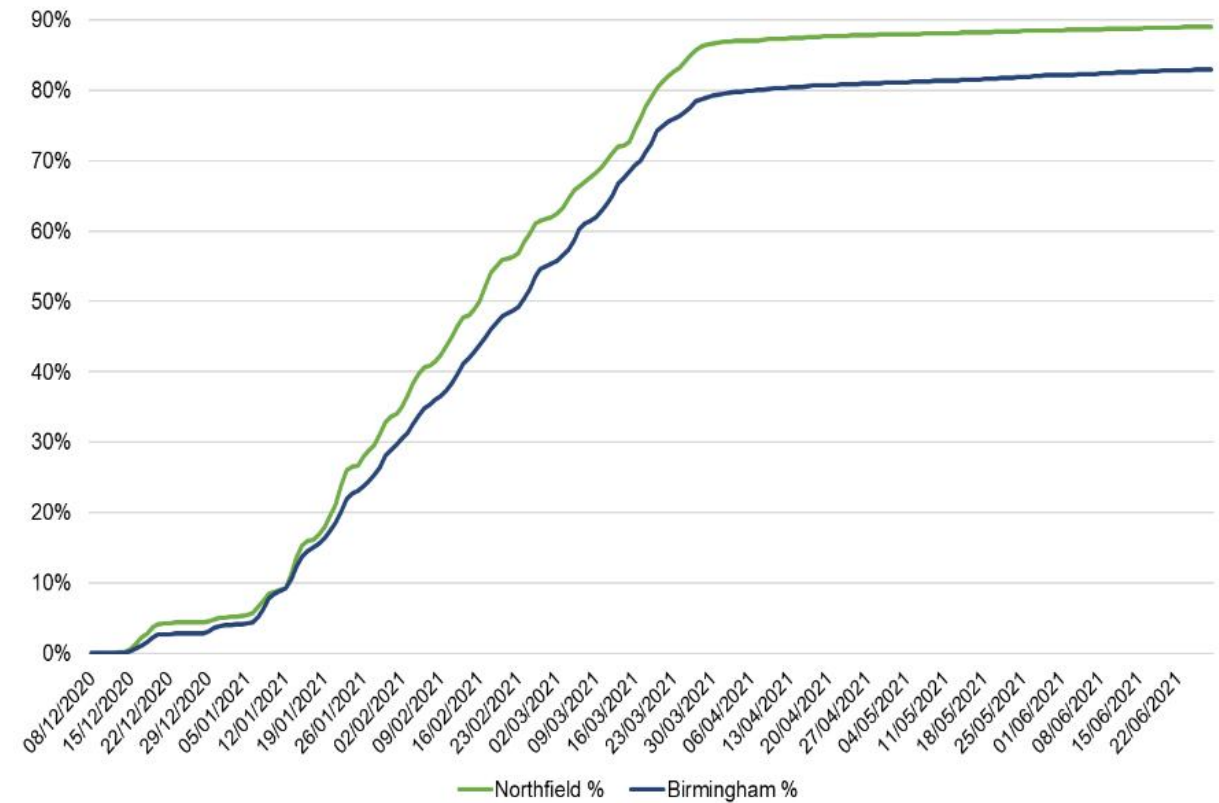


# Uptake Progress by Constituency (updated 29/06/2021)

Covid Vaccination % 1st Dose Uptake by Constituency in Age 50+ Population

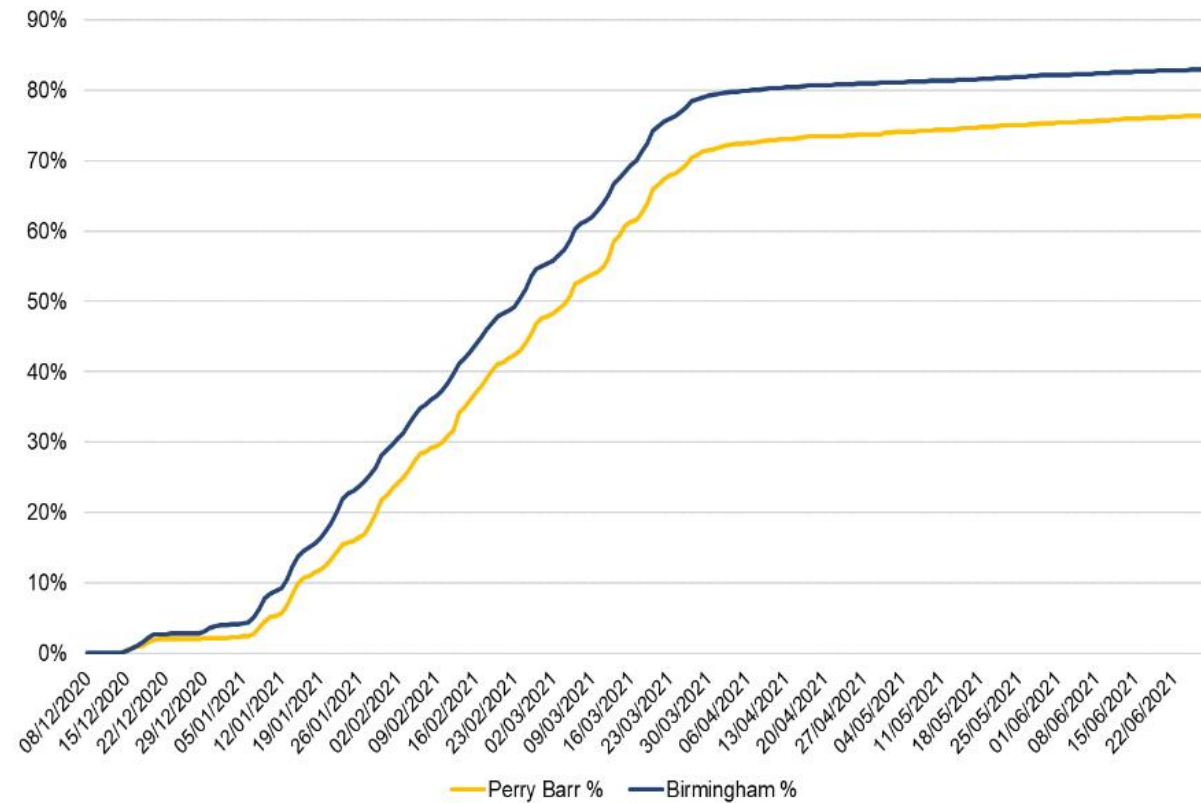


Covid Vaccination % 1st Dose Uptake by Constituency in Age 50+ Population

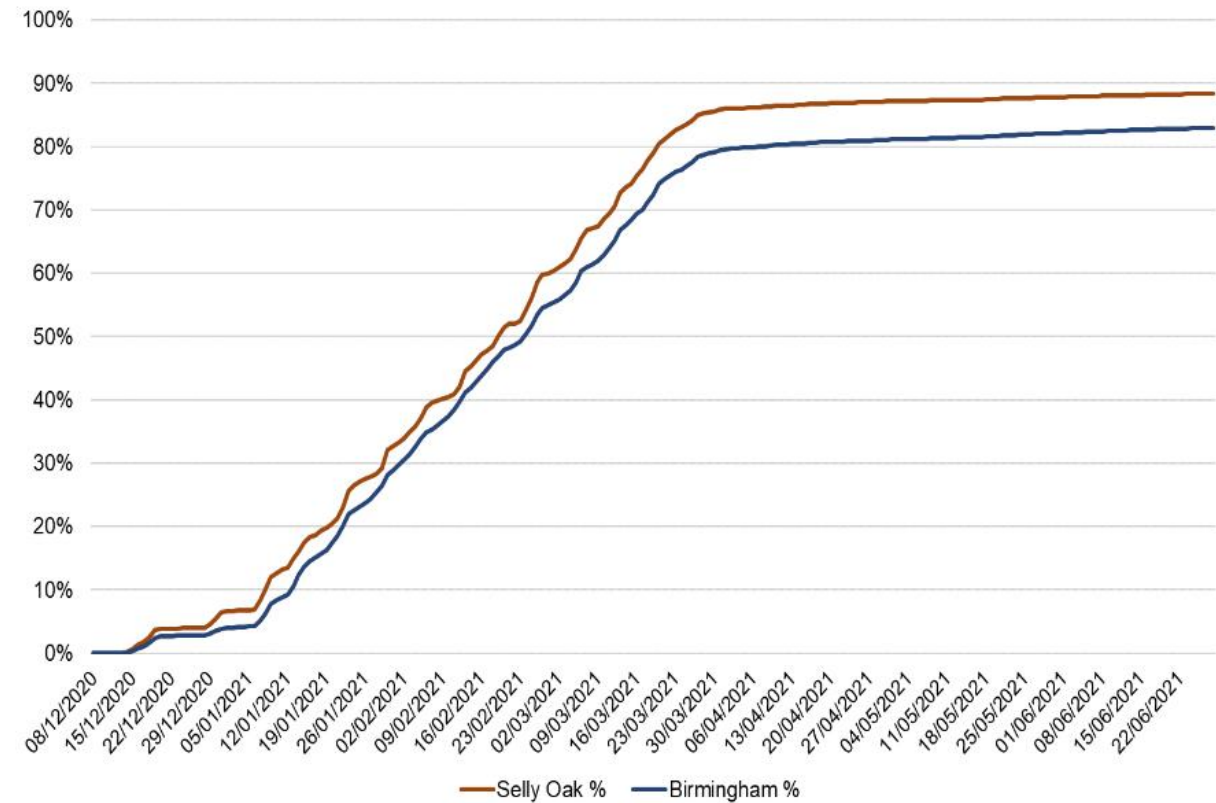


# Uptake Progress by Constituency (updated 29/06/2021)

Covid Vaccination % 1st Dose Uptake by Constituency in Age 50+ Population



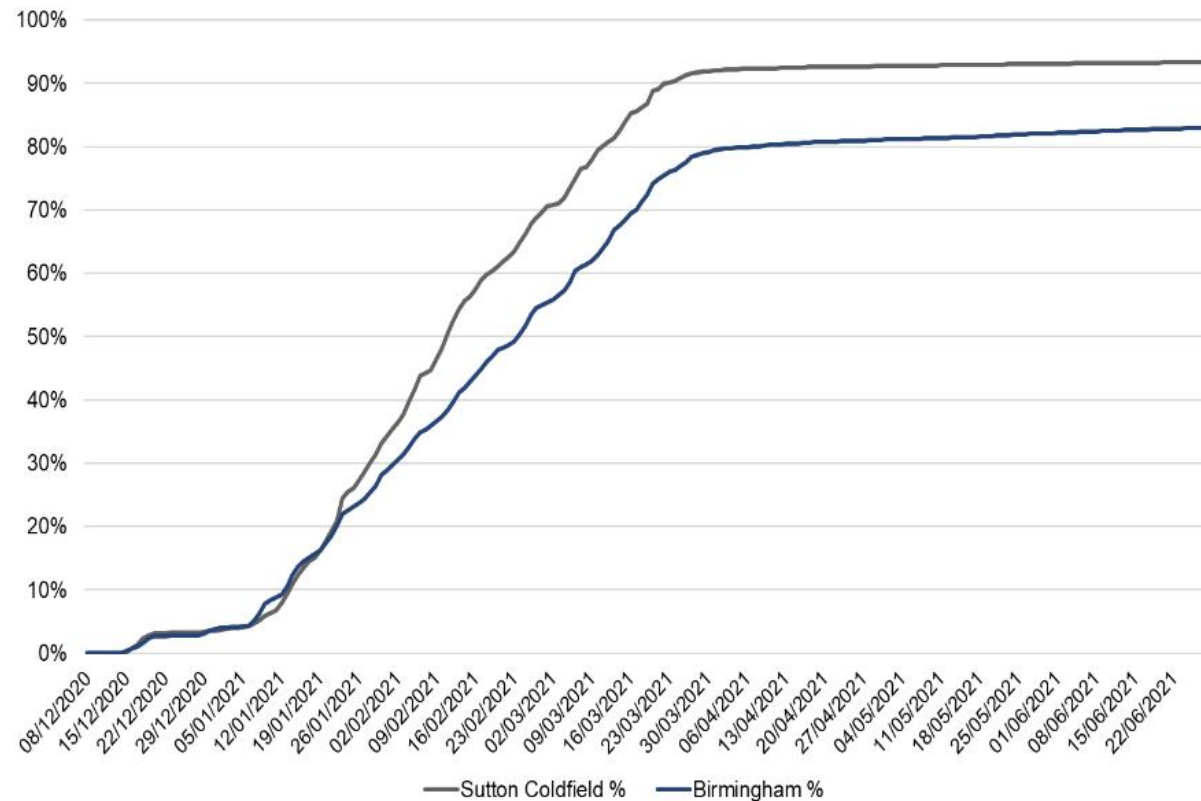
Covid Vaccination % 1st Dose Uptake by Constituency in Age 50+ Population



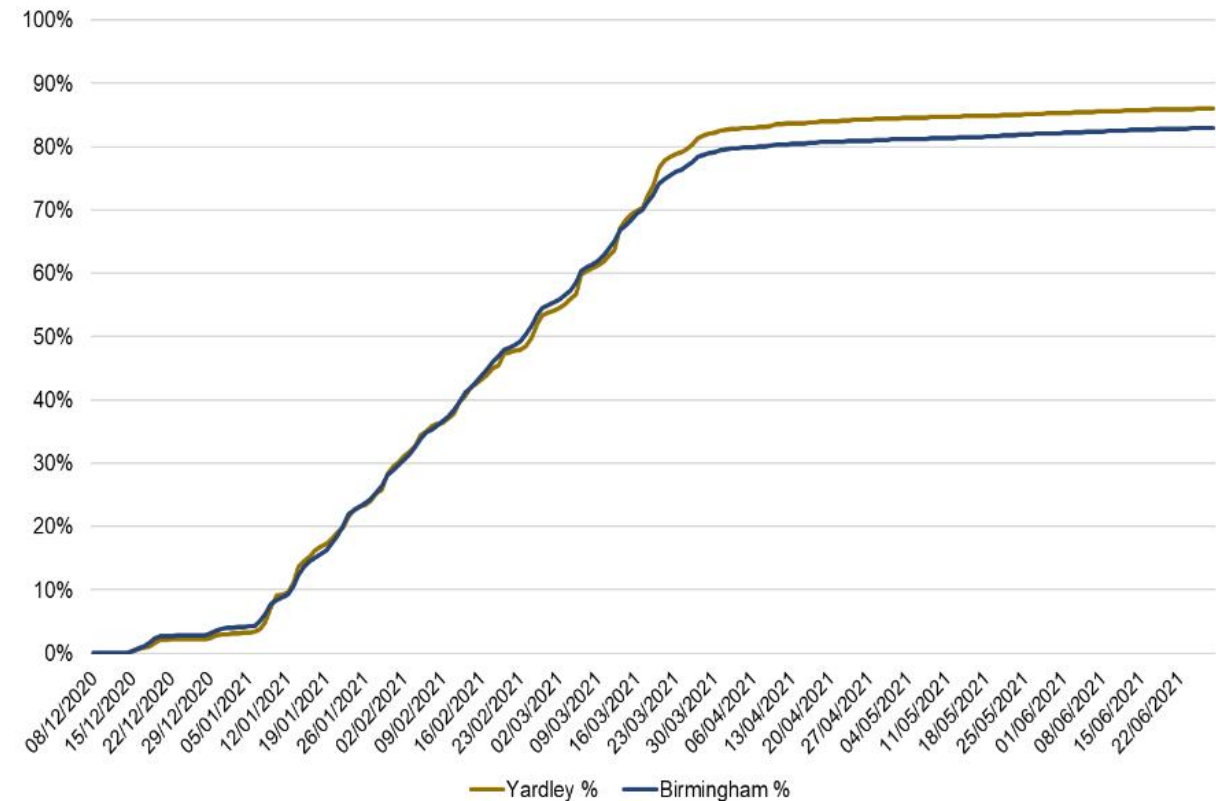


# Uptake Progress by Constituency (updated 29/06/2021)

Covid Vaccination % 1st Dose Uptake by Constituency in Age 50+ Population



Covid Vaccination % 1st Dose Uptake by Constituency in Age 50+ Population





## Demographics of uptake: Deprivation (extract 29/06/2021)

Uptake of vaccine by deprivation shows lower uptake in more deprived communities than in more affluent communities.

This data is for Birmingham and Solihull CCG and Sandwell and West Birmingham CCG only.

IMD Deprivation Quintile	% uptake of 1st Dose of Covid Vaccination data extracted 29/06										
	Over 80yr olds	75-79yrs	70-74yrs	65-69yrs	60-64yrs	55-59yrs	50-54yrs	CEV	COVID At Risk	Carers - LA	Carers - DWP
Deprived (DQ1)	87.9%	90.4%	88.5%	84.3%	80.5%	76.2%	72.7%	82.0%	72.4%	72.8%	68.1%
Moderately Deprived (DQ2)	93.2%	93.7%	92.6%	89.7%	87.0%	83.6%	80.5%	88.0%	80.5%	80.8%	73.4%
Average (DQ3)	95.2%	95.5%	94.9%	93.3%	90.4%	88.4%	85.7%	91.3%	85.0%	85.9%	78.0%
Moderately Affluent (DQ4)	95.9%	95.8%	95.6%	94.1%	92.0%	90.3%	87.7%	93.9%	89.1%	90.4%	82.5%
Affluent (DQ5)	96.9%	97.2%	96.5%	95.6%	94.5%	93.0%	91.4%	96.3%	92.2%	92.5%	84.2%

## Demographics of uptake: Gender (extract 29/06/2021)

Uptake of vaccine is similar in both genders.

This data is for Birmingham and Solihull CCG and Sandwell and West Birmingham CCG only.

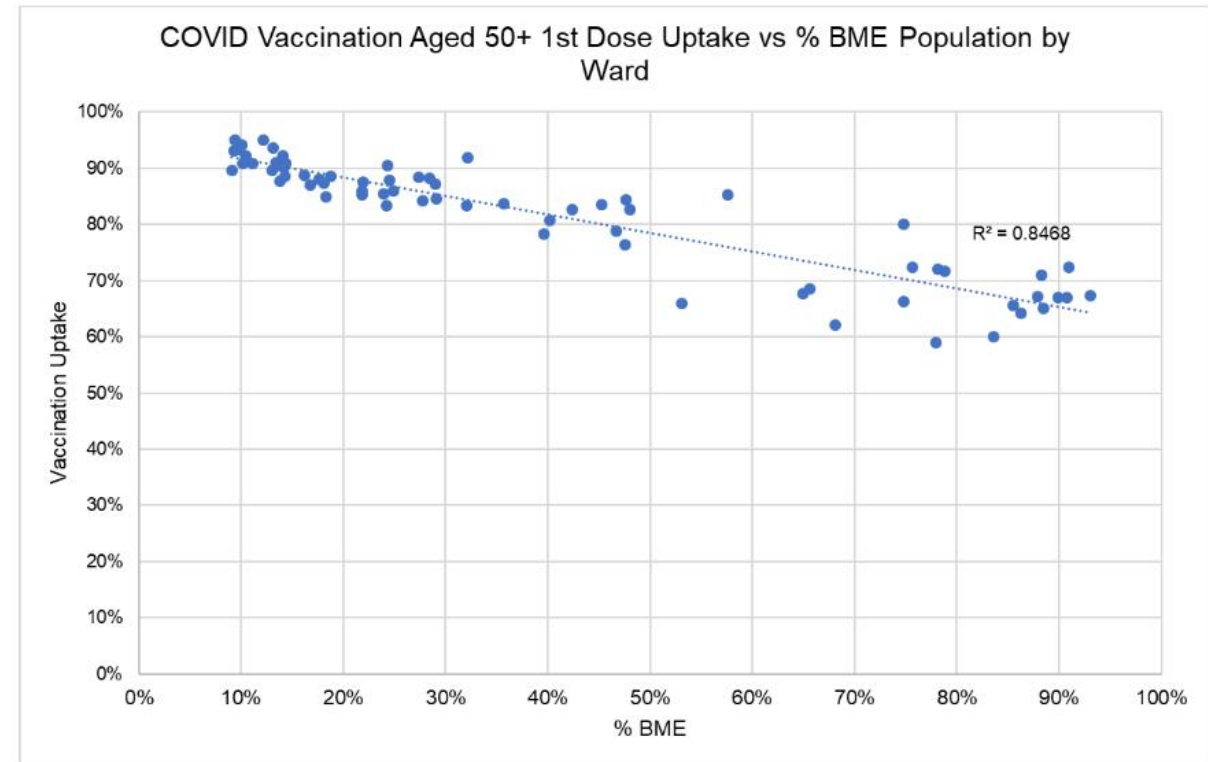
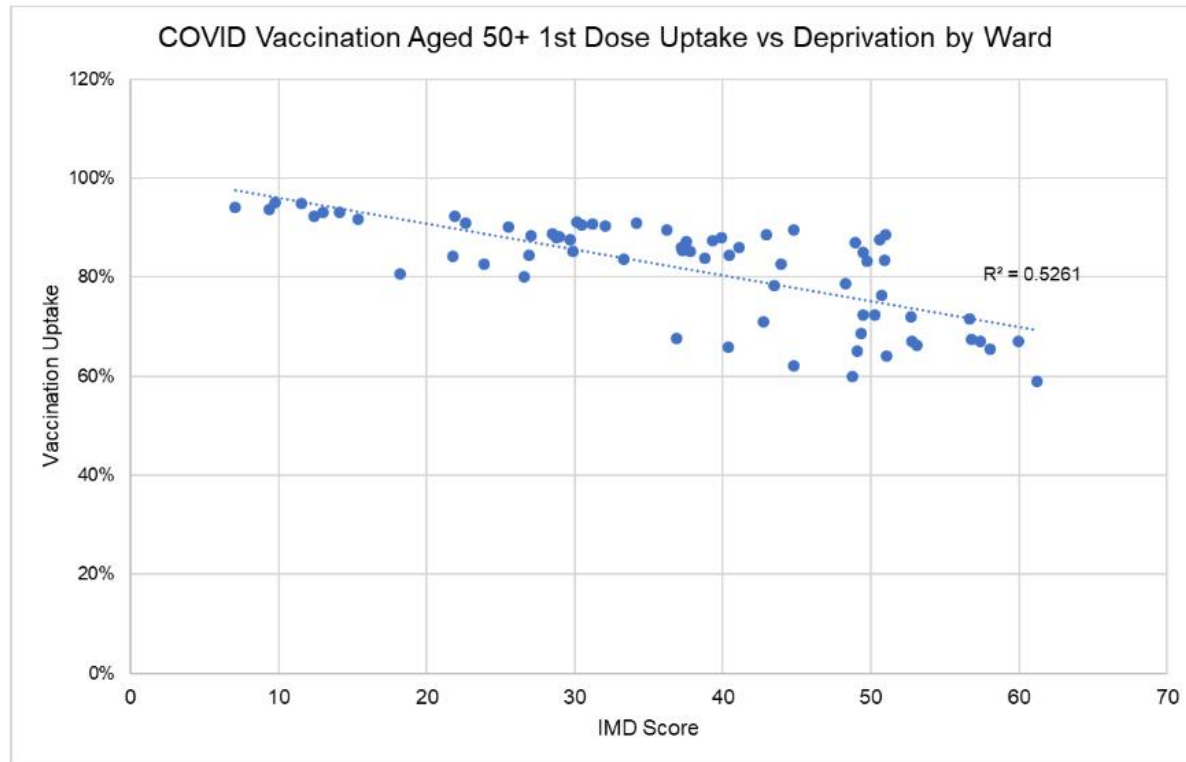
Gender	% uptake of 1st Dose of Covid Vaccination data extracted 29/06										
	Over 80yr olds	75-79yrs	70-74yrs	65-69yrs	60-64yrs	55-59yrs	50-54yrs	CEV	COVID At Risk	Carers - LA	Carers - DWP
Female	92.4%	93.6%	92.3%	89.7%	87.3%	84.7%	82.5%	84.4%	78.3%	78.2%	71.1%
Male	91.9%	93.2%	91.9%	88.1%	84.0%	79.8%	75.3%	86.3%	76.9%	78.2%	68.5%

# Demographics of uptake: Ethnicity (extract 29/06)

Across the priority groups uptake of vaccine is lower in African, Caribbean and Black communities and then Pakistani and Bangladeshi communities, but there is a significant difference in the size of different ethnic groups in different priority groups e.g. the total eligible population of >80yrs from a Pakistani ethnic group is 3,526 compared to 396 from African ethnic groups. This data is just for Birmingham & Solihull and Sandwell & West Birmingham CCGs.

Ethnic Group	% uptake of 1st Dose of Covid Vaccination data extracted 29/06										
	Over 80yr olds	75-79yrs	70-74yrs	65-69yrs	60-64yrs	55-59yrs	50-54yrs	CEV	COVID At Risk	Carers - LA	Carers - DWP
Not recorded	70.4%	79.4%	77.1%	71.0%	64.2%	57.5%	52.9%	79.8%	68.3%	72.1%	60.6%
African	69.7%	67.7%	68.3%	69.5%	69.7%	65.8%	65.7%	70.8%	60.1%	60.2%	58.0%
Any other Asian background	81.8%	85.8%	84.2%	82.8%	80.3%	77.3%	75.2%	80.1%	73.3%	68.2%	66.4%
Any other Black background	74.7%	70.4%	70.5%	66.0%	63.5%	60.9%	58.0%	63.4%	52.4%	57.7%	44.6%
Any other ethnic group	76.5%	79.4%	75.0%	74.7%	71.7%	69.4%	67.8%	72.0%	62.3%	69.2%	60.0%
Any other mixed background	89.8%	88.6%	76.7%	74.7%	75.1%	71.9%	70.0%	74.0%	58.2%	59.3%	48.4%
Any other White background	93.9%	92.1%	88.6%	81.8%	76.3%	74.3%	68.2%	81.4%	68.1%	79.6%	64.5%
Arab	80.0%	63.6%	77.8%	72.9%	68.2%	68.0%	60.5%	58.2%	59.9%	47.1%	58.7%
Bangladeshi or British Bangladeshi	81.9%	84.0%	86.0%	87.6%	86.7%	87.8%	86.4%	87.2%	78.7%	80.9%	80.1%
British, Mixed British	96.9%	97.1%	96.5%	95.2%	93.6%	91.9%	89.9%	93.8%	86.5%	86.3%	77.1%
Caribbean	76.2%	77.2%	71.9%	67.0%	62.0%	57.2%	53.3%	66.7%	51.4%	49.7%	36.5%
Chinese	82.8%	71.4%	69.5%	70.4%	71.6%	74.8%	75.9%	84.6%	76.4%	88.2%	93.8%
Indian or British Indian	90.7%	90.6%	90.5%	90.4%	89.7%	87.7%	85.4%	91.1%	85.7%	85.1%	82.0%
Irish	95.2%	95.6%	92.5%	91.9%	89.3%	85.8%	83.4%	93.8%	81.6%	85.3%	72.0%
Pakistani or British Pakistani	80.6%	82.8%	81.7%	80.4%	80.1%	77.2%	73.9%	76.4%	66.5%	67.7%	65.7%
Traveller	0.0%	0.0%	0.0%	0.0%	7.7%	23.1%	29.6%	7.7%	15.2%	0.0%	0.0%
White and Asian	82.9%	81.6%	84.5%	79.6%	84.4%	85.7%	78.2%	75.5%	71.7%	62.1%	63.6%
White and Black African	69.8%	73.9%	59.3%	59.5%	73.1%	65.0%	67.1%	72.4%	61.9%	64.0%	44.2%
White and Black Caribbean	76.0%	74.1%	73.7%	72.8%	69.0%	65.5%	62.5%	66.0%	51.6%	43.8%	35.6%

# Demographics of uptake: Relationship between Deprivation, BME Population & Uptake (extract 29/06/2021)



A strong relationship between % BME population vs 1<sup>st</sup> dose uptake and a moderate relationship between deprivation vs 1<sup>st</sup> dose uptake are observed.

**[birmingham.gov.uk/futurecouncil](https://www.birmingham.gov.uk/futurecouncil)**



**@BhamCityCouncil**



**@birminghamcitycouncil**



**@birminghamcitycouncil**



**Making a positive difference** every day to people's lives

