

Birmingham Early Years Health and Wellbeing Proposed New Operating Model

October 2017

V0.14

Contents

Executive Summary	4
Purpose and Scope	4
The Reason for Change.....	4
Description of Service	4
What will be different about the new model?.....	5
Consultation - Key Findings and Recommendations	5
How the service will work?	7
Birmingham Early Years Health and Wellbeing Service Initial Operating Model.....	9
1. Purpose and Scope	9
2. What is the Model About?.....	9
3. Why Do We Need a New Model?	9
4. Overview of Future Operating Model.....	10
5. How will services be delivered at a city wide level?	11
6. Service Range	11
7. Children with Special Educational Needs and Disabilities	12
8. Options for Service Access.....	15
1) Digital	15
2) Telephone.....	15
3) Face to face.....	16
9. How will the service work in partnership	19
10. District Operating Model	21
10.1 Edgbaston	22
10.2 Erdington	25
10.3 Hall Green	27
10.4 Hodge Hill	30
10.5 Ladywood	33

10.6	Northfield	36
10.7	Perry Barr	40
10.8	Selly Oak	43
10.9	Sutton Coldfield	45
10.10	Yardley	48
11.	Transition to the new model.....	50

Executive Summary

Purpose and Scope

This paper sets out how the new Early Years Health and Wellbeing Service will be delivered locally. It provides information on why the new model will produce better outcomes for children and families, what services will be available and describes how delivery will work across local communities.

The Reason for Change

The value of Early Years Services in helping children and families to thrive and develop the resilience they need as they grow is well evidenced.

A review of existing services in 2013, identified that the current provision, and the way it was delivered, was producing poor outcomes for children and was creating inequalities across families, and communities.

The model was property-driven, relying on services being delivered from specific buildings, with less focus on the integration of services, sharing of expertise and knowledge across staff delivering services, and a consistency in approach. There were 76 contracts for related services across the city. All this activity was not producing the desired outcomes - fewer children in Birmingham reach a good level of development by the time they start school than the national average.

A need to transform Early Years services to address the issues highlighted above was confirmed in the 2014 Lord Warner Review of Children's Services within which services were described as requiring improvement.

In 2014 the amount of funding that the Council receives to deliver services reduced significantly. The amount of money available to support children during their Early Years has as a consequence reduced by £17.1 million per year, £7 million of these savings have been made by reducing the Council's costs but the rest cannot be made without changing how services are delivered to children and families.

The Council has therefore had to think hard about how to deliver the improvement we want to see for children and families with less money. To do this we have chosen to try to keep as many experienced staff as we can and to locate them in community venues rather than in buildings which can be expensive for us to run.

Description of Service

The new model of delivery responds to the recommendations of two consultations. Through moving away from a property-based focus, the new service will provide: greater integration of health and council services, by supporting teams of expert staff to work collaboratively; improved access by offering a range of locations, including multi-service Hubs; and targeting support to those who need it most, in places that

are accessible to the local community. The new service will provide children and families with the support they need to develop well, establish healthy lifestyles and become confident skilled parents.

What will be different about the new model?

- Health visitors and children's centre workers will work as part of the same team to deliver support to children and parents, sharing knowledge and expertise to inform interventions.
- Some services will be based in 'Hubs', with concentrations of specialist provision, providing a focus for families, children and experts.
- There will be an increased range of access points, including in areas where services were not previously available but where families already go and feel comfortable.
- Greater use of technology to make access to some services more convenient for families and to enable flexible, mobile working for staff.
- The creation of a 'single record' for the child so that whichever centre the family use the support workers there will be able to access information about their needs and preferences.
- The level of service a child and family receives will be related to their needs.
- Services will be available for 52 weeks of the year with all HUBs operating throughout the school holidays.
- Services will have more flexible opening hours, including evenings and weekends.
- Parents will be able to access any of services across the city; service access will not be restricted to those living within the postcode.
- Wider access at all levels for children with disabilities.

Consultation - Key Findings and Recommendations

A consultation was undertaken to ask for views on where services should be delivered from locally.

The below summarises what you told us and what we are proposing doing in response.

City-wide

You Said	We Did
Later opening hours and weekend services would help you get the support you need.	Confirmed that services will be open later and on weekends where local people need them.

Edgbaston

You Said	We Did
Services need to be retained at Lillian de Lissa Children's Centre or locally on the Benmore Estate.	Lillian de Lissa is now proposed to be utilised as community location.

Erdington

You Said	We Did
Lakeside Children's Centre is important to the community and services are vital for those families within the local area	Lakeside Children's Centre is now proposed to be utilised as a Hub location which would then mean Story Wood Children's Centre would become a community location

Hall Green

You Said	We Did
Services should be retained at Muath Children's Centre	Muath Children's Centre is now proposed to be utilised as a community location

Hodge Hill

You Said	We Did
That the locations suggested are accessible to the local children and families	We intend to implement the proposed model

Ladywood

You Said	We Did
That there not enough places to go to access services.	An additional 8 community locations will be available in Ladywood

Northfield

You Said	We Did
The proposed locations were not enough and you said you were concerned about the level of closures	We are recommending keeping Merrishaw Children's Centre open as a community location

Perry Barr

You Said	We Did
You were happy with the proposals	We confirmed the locations for your area.

Selly Oak

You Said	We Did
That the proposed locations would enable services to be accessed within the District.	We confirmed the locations for the area.
Parents who use Allens Croft Children's Centre told us how much they liked this service and how valuable it had been to them. They were concerned.	Services are proposed to continue on a sessional basis at Allens Croft and St Bede's Church. We will work with the parents who use Allens Croft Children's Centre to see if this is enough to meet their needs.

Sutton Coldfield

You Said	We Did
Local children and families told us that Holland House Children's Centre was more accessible to them than New Hall Children's Centre.	We have swapped the venues
Services located in Mere Green were convenient and valued by local children and families. Removing these services was concerning.	Additional community locations have been included into the proposal for this area.

Yardley

You Said	We Did
Putting services at the Meadway was a bad idea as this building was due to be demolished. You said that Bordesley Green East Children's Centre would better enable local children and families to access services	Bordesley Green East Children's Centre will replace the Meadway as a Community Venue.

How the service will work?

Outlined below is the support and service that will be offered to families:

- Parents will be referred to the service by their midwife before their baby is born. They will then be contacted by one of the health visitors working in the new service who will arrange a time to meet. During their first meeting the health visitor will explore any concerns that the parent may have about preparing for and caring for their new baby.
- The health visitor will provide advice and information at this time about preparing for birth and what to expect when your baby is born.
- Where the parent requests additional help at this time, or the health visitor feels that additional support may be required options will be explored but could include a referral to an ante-natal class or to a family support worker to provide more intensive one to one help.
- The health visitor will then arrange to visit the new parent again just after the birth of their baby. This visit will happen at home and will check how both the baby and the parents are doing. Again concerns will be listened to and support arranged as required.

- To provide the new parent with additional help the health visitor will provide information about local well baby clinics, stay and play sessions and children's centre services that they could access.
- Where parents find it difficult to attend services or where more one to one support is required additional support may continue to be delivered to them in their home.
- The new service has been designed to provide new parents with a choice of access points.
- In each District at least one central HUB location has been maintained which will be open for parents to attend between 9am and 5pm Monday to Friday. These centres will also offer some evening and weekend sessions. Health visitors and early years support workers will be available at these HUB buildings. Parents will be able to alongside advice and information, stay and play services and group sessions for those who need them.
- To complement the services provided at the HUBs a network of community based services will also be available to local families. These will include well baby clinics. The types of services available in these community based services will be different depending on what local parents want, however services could include stay and play, parenting supporting groups and access to family support services. Advice and information will also be available in the community based services.
- Parents will be able to choose which venue they want to use and could for example choose to go to one near their home, work or family. Parents will be able to use the services that are provided through these HUBs and community venues throughout their child's early years.
- To support parents throughout the period of their child's early years the health visitor will make contact at 3 further times at 6 – 8 weeks, 1 year and 2.5 years.
- Parents will be able to access support from the service until their child starts school when care will be taken to ensure that any important information is transferred to school.

Birmingham Early Years Health and Wellbeing Service Initial Operating Model

1. Purpose and Scope

This paper sets out for Cabinet consideration details of the initial local operating model for the Early Years Health and Wellbeing Service. It provides information on the range of services to be provided, the routes for access, service integration and presents recommendations on the locations for the local operating model at a district level.

The recommendations contained within this report reflect the requirements of the approved service specification, have been designed by experienced Early Years professionals and have been tested and refined by the outcomes of public consultation. They are also deliverable within the Council's approved budget envelope.

2. What is the Model About?

Birmingham City Council has confirmed through our Vision for 2020 our commitment to creating the opportunities for all children by 'Every child having a fantastic childhood and the best preparation for adult life'.

The new Early Years Health and Wellbeing Service is a critical component of our plans to deliver this for children aged between 0 and 5 and their families. Within our Commissioning Strategy we recognised that:

"Every parent wants the best for their children. We want to support this by providing every child living in Birmingham with an equal chance to have a really good start in life. Birmingham City Council feels this will be achieved if every child has a good level of development when they start school. Early Years Services are provided to support parents from the time a child is conceived up until the age of 5. How well a child does in their early years has a huge impact on how they do in the rest of their lives."

The Early Years Health and Wellbeing Service will bring together the support provided by health visitors, children's centres and the voluntary and community sectors to provide a consistent integrated service providing **all** children and families with the support they need to develop well, establish healthy lifestyles and become confident skilled parents.

3. Why Do We Need a New Model?

The Childcare Act 2006 places a duty on the Local Authority to:

- Improve outcomes for children and young families
- Focus, in particular on families in greatest need of support
- Reduce inequalities in child development, school readiness, parenting aspirations, self-esteem, parenting skills, child and family health and life chances.

We know that the level of development achieved by children living in Birmingham currently is not good enough. The percentage of children achieving a good level of development (GLD) by the time they start school is below the national average and

ranks 132 out of 152 local authority areas. Whilst some improvements have been made, our rate of change is below that of the rest of the country and the gap is widening especially for some of our most vulnerable children.

Area	2013	2014	2015	2016	Total increase
Birmingham	49.60%	56.40%	61.90%	63.70%	14.10%
England	51.70%	60.40%	66.30%	69.30%	17.60%
Statistical neighbours	46.50%	54.40%	61.50%	65.40%	18.90%
West Midlands	50%	58.40%	65.30%	67.10%	17.10%

We also know that the way we provide services at the moment is insufficiently focused, only 47% of under 5s access our children's centres and whilst the average take up of the mandated health visitor checks is only 68%.

With 85,000 children under the age of 5 living in Birmingham this means that up to 27,200 children, to include some of most vulnerable and transient families, are not accessing services.

The new operating model that we set out within this paper has been developed to tackle these issues and enable us to deliver services in a way which reduces inequality and improves outcomes.

As an outcome of the new operating model we are aiming to increase the percentage of children achieving a good level of development by the time they start school from the current position of 63.7% to 85% by the end of year 5 with an increased trajectory each year from year 1.

Alongside this a clear commitment has been made to improving the reach of the service by ensuring that all children and families are engaged with the service, by providing a more consistent and integrated service which stops children and families falling through the gaps. This will also be supported by the development of the single child record. The overall aim being that no child goes unseen.

The new model has also been designed to be deliverable within the Council's reduced budget envelope. It has considered how to deliver services efficiently by removing duplication and making the level of service received more proportionate to need.

4. Overview of Future Operating Model

The key requirements for our future operating model were set out clearly in the Service Specification for the new Early Years Health and Wellbeing Service which was informed by the initial public consultation, co-designed with Early Years professionals and approved by Cabinet in June 2016.

One such key requirement was for an integrated city wide service, shaped to meet the need of local communities via district level planning.

5. How will services be delivered at a city wide level?

The new Early Years Health and Wellbeing Service will work in a family centred way. The service offer will be a graded response related to the level of need, in line with the Right Service Right Time Framework. This means that some components of the new service offer will be targeted and only available to those families assessed as requiring them.

The new operating model has been designed with a number of consistent elements to ensure that the way services are organised promote equity and to support the development of a brand and infrastructure for delivery that parents can recognise and trust.

This means that children and families will need to be able to easily identify the new service, and to identify the service as:

- Knowledgeable and experienced
- Credible and trustworthy
- Creative and innovative
- Open and honest
- Listening and caring

We want children and families in Birmingham to trust that when they access the service, that they can be confident of high quality services which embody the above principles.

The formal branding of the service will support the ambition to be a “single t-shirt service” reflecting the desire to have a single identity, known to children, families and all stakeholders, whilst acknowledging that the service will be delivered by multiple partners/organisations.

Below is a description of the key elements of the service operating model:

6. Service Range

We have a strong universal offer to provide opportunity for prevention, early intervention and identification of need for all children. Our universal health visitor-led home visits will focus on public health messages that support population based health improvement, whilst providing opportunity for family or professional-led identification of additional need. We will provide opportunities to access groups in a range of settings to promote health and wellbeing, support maternal mental health, promote good attachment and improve school readiness. These groups will be provided with the access they need into the system when they need it.

Our universal offer will reduce the number of children requiring additional support at a later stage and will ensure continuity for each family; we will know our local families and they will know us. This will support uptake, helping us identify and find children we have not seen in line with the Early Help agenda.

The following range of services will be available to support children and families living in Birmingham.

Universal – services available to all families

- 5 key assessment contacts for every child during pre-school years (28 weeks pregnant, 10-14 days old, 6-8 weeks, 9-12 months and 24-30 months)
- Community-based stay and play groups
- Antenatal classes delivered in partnership with community midwifery colleagues
- Well-baby clinics
- Advice and support about your child's health and development
- Advice and support about keeping yourself and your family healthy
- Support to access your child's Early Education Entitlement (EEE) (all 3 and 4 year olds and eligible 2 year olds)
- Online information will be available to families through our website and through recommended apps

Targeted services – available for some families where more support is required

- Delivered in groups and 1:1 sessions in the home based on need, to include the following
 - Stay and play with professional advice and support
 - Parenting advice, including parenting courses
 - 1:1 family support, including support provided by Home-Start volunteers
 - Speech and language support
 - Healthy lifestyle support for children and parents
 - Breastfeeding support
 - Maternal mental health
 - Attachment and emotional development
 - Freedom Programme (domestic violence and abuse)
 - Support for children with additional needs and their families (including peer support groups for parents)

In addition to the universal offer which includes every child receiving their 5 mandated visits from a Health Visitor, the range of services to be provided to an individual child or family will be dependent on their needs.

The range of services offered above is considered to be appropriate to meet the needs of children and families living in Birmingham. They are compliant with our legal duties and have been informed by the outcomes of public consultation through which a strong parental voice was secured in support of the retention of stay and play services for all.

7. Children with Special Educational Needs and Disabilities

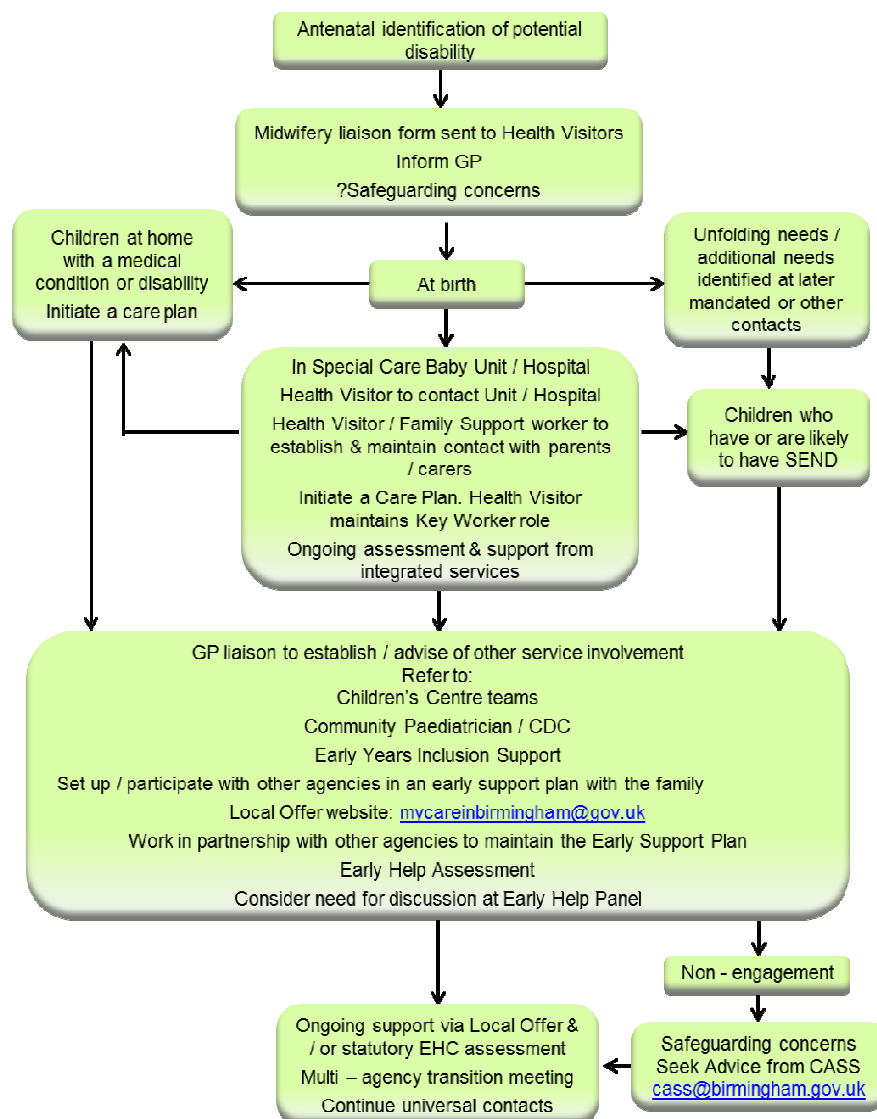
To illustrate how the service range will work for a specific identified group of children with additional needs, the below provides an example of the service flexibility.

Children with special education needs and disabilities (SEND) will be identified at the earliest opportunity and a keyworker provided to ensure needs are pro-actively addressed. This will include using a graded approach, Early Support planning and close working with the wider SEND system ensuring timely assessments of children's needs and Education, Health and Care (EHC) planning prior to compulsory schooling age. Targeted support will be provided to parents around choosing school places and making informed choices about what is best for their child. Keyworker support will continue for children with SEND until they are settled.

Our model will ensure children with SEND are identified as early as possible through universal assessment contacts or via referrals from wider system partners including GPs. When additional needs are identified children will be referred for specialist assessment or support, for example speech therapy or community paediatrics. Our existing relationships with these services, along with our shared RiO record, will facilitate effective and efficient communication. Whilst waiting for further assessment or support, our integrated service will continue to work with the child and family, on a pathway specific to their need, for as long as required. This will ensure families do not feel unsupported at any point in the child's journey.

Parents will be offered support at home and in Hubs through antenatal groups/peer support groups and specialist stay and play or speech and language therapy groups. The key worker will be responsible for coordinating and tailoring various services to the needs of the individual child.

Our SEND pathway (see below) describes the process we will take to enable families to receive the best help available.



We recognise the importance of support for children with SEND around transition, and will work closely with the parent and the childcare/education provider, particularly where enteral feeding/mobility issues/feeding problems require individual health needs to be met and understood by schools, before handover can take place.

Where a child attends early full time education the health visitor will maintain contact with the family to ensure there are no wider family issues to be addressed e.g. maternal mental health which might need support from the Early Help panel.

We will ensure that children with SEND have equal access to the Corporate Childcare Funding (CCF).

Each District will have an Early Support Champion who will work closely with the Early Support Networks to ensure clear organisational arrangements are strengthened between Education and Health. Local Advisory Boards for SEND will be set up where sharing of data, good practice and resources are identified and impact measured. These Boards will link into the Partnership Advisory Board which will further link to the Inclusion Commission.

KIDS West Midlands will ensure each District has a minimum of one weekly group for parents with crèche provision to enable parents/carers to attend information sessions/develop social networks. Additional courses will be run to address specific needs, for example children with Autism.

The groups will be facilitated by a lead practitioner who will build strong relationships with families, develop volunteering opportunities and plan sessions through consultation/in response to identified need. There will be planned sessions for children and parents/carers together facilitated by KIDS focussing on building parent's confidence to play with their child and use learning from the training sessions.

8. Options for Service Access

Our new service model aims to deliver fast and efficient support to children and families in a way that meets their service access preferences and lifestyles.

To reflect the 24/7 nature of the parenting role and the requirement for parents to be able to access high quality reliable advice and information at all times of the day and night an increased range of access channels have been developed. The expanded range of channels will also provide additional options for some households who report finding traditional building based services hard to access to include working parents, low income parents and parents with mobility problems. These routes will also provide discrete, safe service access for particularly vulnerable groups such as women fleeing domestic abuse.

Service options include:

1) Digital

A Baby Check App has been developed and will be available for all parents to download free of charge. The checker will provide immediate support to parents who have concerns about the health of their child and will contain 19 simple checks for different symptoms or signs of illness to help parents decide whether they need to visit a doctor, hospital or call for urgent help.

A website will provide information on service options alongside general advice and information on issues such as healthy lifestyles, effective parenting and ways to support your child's development needs.

The website will be complemented by a Facebook page which will enable parent's timely access to information about forthcoming events and campaigns.

2) Telephone

For those parents who need a little more support than is available online a telephone service will be available from 9am – 5pm, Monday – Friday. The phone line will be staffed by a trained health visitor and will provide instant advice and support to parents on a range of issues.

3) Face to face

The provision of face to face support remains important to our new model. Many of the parents who responded to our consultations spoke about how important the relationships were that they had established with professionals and other parents. They referred to these relationships as providing them with a support network that helped them to develop as parents.

The new model therefore contains a wide range of face to face options for parents, to include:

a) Home Visiting Services

The health visiting service which is the universal service received by all new parents will be initially delivered on a home visiting basis. The new birth visits will be routinely completed within the family home thereby ensuring that every new parent can easily access support and have their needs considered at the earliest opportunity.

Subsequent health visitor checks may be completed in the family home or via a drop in clinic as considered appropriate to meet the family's needs.

For those groups who are assessed as vulnerable and who are hard to engage in services will be prioritised for on-going home visiting support. Where appropriate the home visiting support provided by the health visitors will be enhanced with other services being delivered into the family home as required.

To help tackle social isolation for those who are very reliant on home visiting based services, volunteer befriending services will be organised to provide additional support.

b) Centre based services

To complement the support provided to parents on a home visiting basis a range of centre based services form part of the new model. These centre based services will provide both individual and group based support.

Parents rated proximity as being very important to them in determining how likely they were to feel that centre based services were accessible to them.

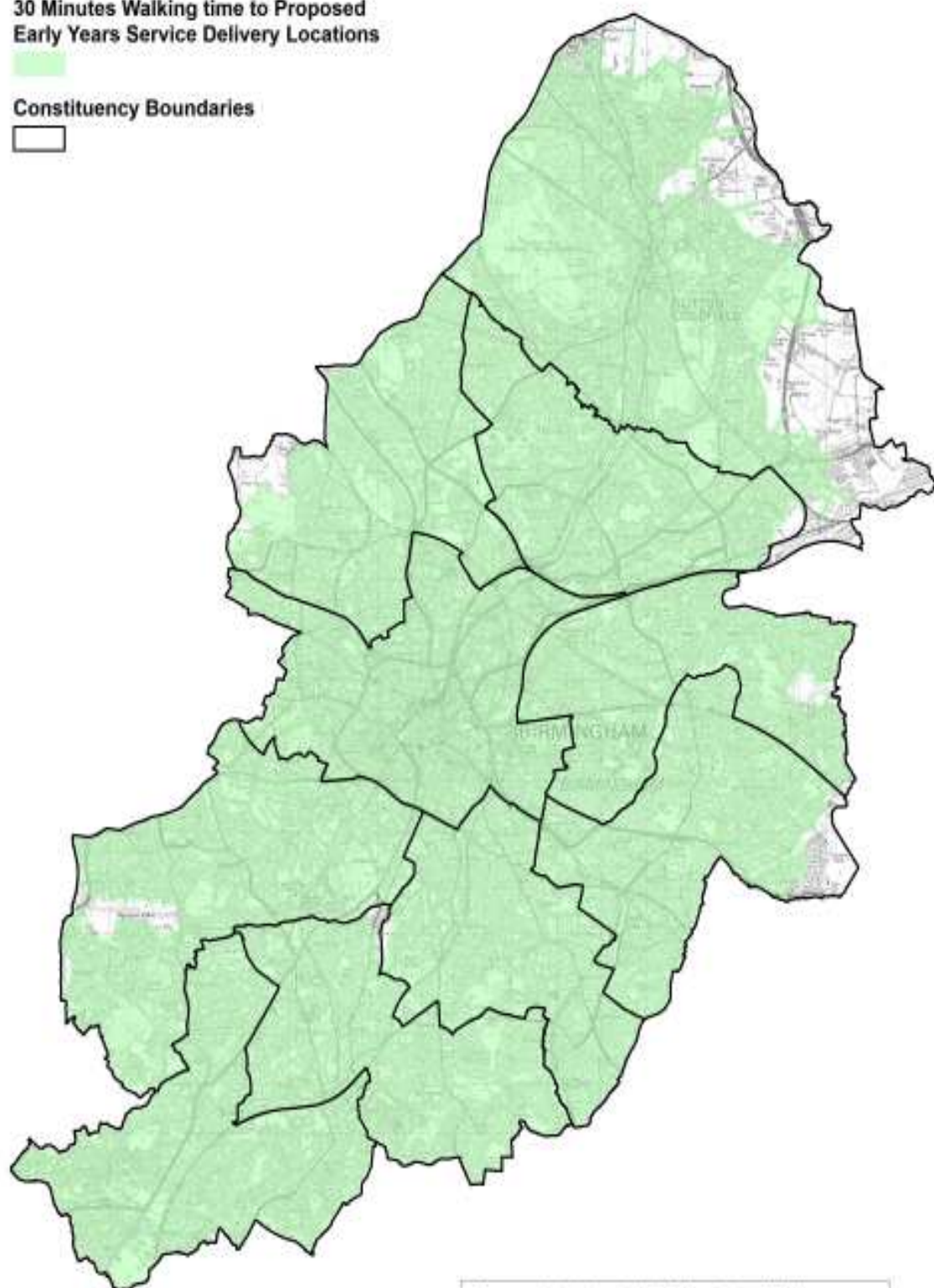
Consideration has therefore been given within the new service model to developing a network of face to face venues across the city for maximum coverage. The map provided overleaf illustrates the coverage achieved through our proposal by considering which parts of the city can access a centre based service within 30 minutes' walk time.

Walking Distance to Proposed Delivery Locations for Early Years Service in Birmingham

30 Minutes Walking time to Proposed
Early Years Service Delivery Locations



Constituency Boundaries



The table below summarises the number of locations in which the initial service offer will be provided from, it is expected that the number of community locations will increase as the service continues to mobilise. There is also a minimum location requirement set by the Council to ensure that services remain accessible and responsive to the needs of local communities.

District	Hubs	Community	Well-baby Clinics
Edgbaston	1	14	9
Erdington	3	9	6
Hall Green	3	9	3
Hodge Hill	4	9	4
Ladywood	4	12	4
Northfield	2	9	10
Perry Barr	2	12	4
Selly Oak	1	10	5
Sutton Coldfield	1	13	4
Yardley	1	10	3
Total	22	107	52

To enable us to increase the number of venues available to parents our model has some HUB style services available Monday to Friday between 9am and 5pm and some local style venues open for a more limited number of hours each week.

Each of these venues will provide an opportunity for parents to walk in and access support.

In line with our principles to deliver services into the buildings that children and families use and value the most, a range of building types have been selected for future use. The HUB buildings have been identified from within our existing Children's Centre portfolio as we believe that these are centres that many of our children and families already recognise to be service access points. These Children's Centre buildings have been complemented by a number of local venues within health centres and clinics to increase reach with 95% of parents visiting the GP practice at least once every 12 months.

A number of other community venues have been identified to date based on accessibility and preferences of local communities. Some of these venues are already being used and wherever possible will continue to be used and some will be new venues which the service will look to utilise or work in partnership with going forward.

A range of stay and play services in community venues will also be available for parents to access across the city to help tackle social isolation and help parents develop supportive social networks. The service is investing in resources which will support the increase in community stay and play provision. Through a contract with the Pre-school Learning Alliance and Thrive the service will undertake an audit of

existing stay and play provision, identifying gaps in provision and support with developing new groups where a need is identified in partnership with local families.

In addition to stay and play services that will be available to all, a range of other parenting groups and classes will be organised to meet local need. These classes could be organised to support

- Particular groups of parents such as Dads, LGBT parents or parents of disabled children.
- Particular needs such as a breastfeeding support group or a parenting skills course.

9. How will the service work in partnership

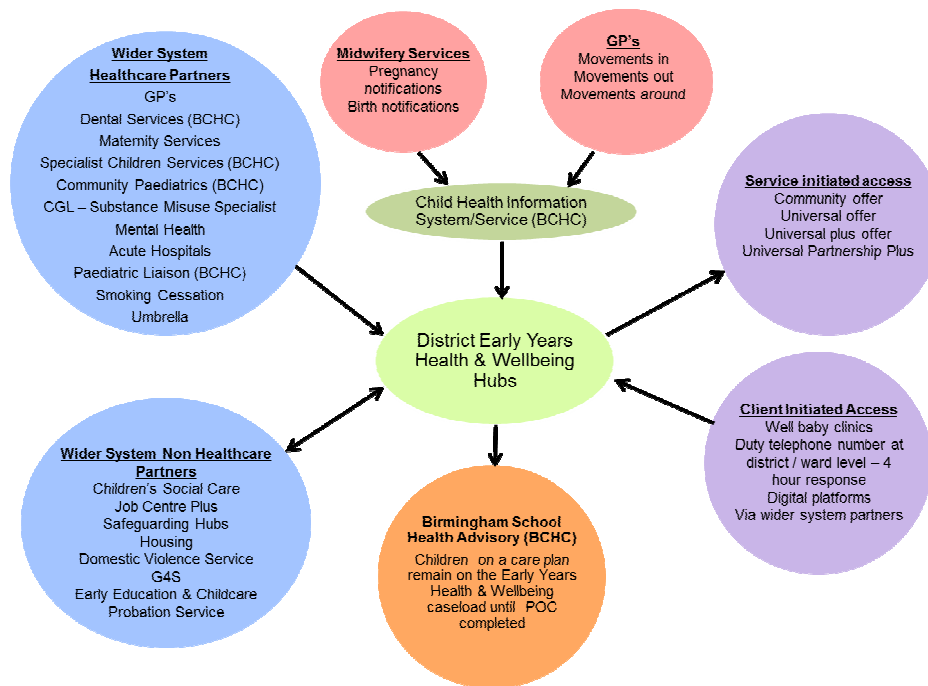
The Early Years Health and Wellbeing Service know that there are children in Birmingham who are rarely seen or heard by existing statutory services. We will develop integrated pathways to support outcomes which are equally accessible to all children.

Effective pathways support the achievement of good child development, healthy lifestyles, effective parenting and child safeguarding. The Partnership has developed a number of pathways to support families including: Premature Baby, Maternal Mental Health, Healthy Weight and Nutrition, Behaviour, Sleep, School Readiness, Vulnerable Families, Speech and Language and Special Educational Needs and Disabilities.

Our pathways recognise the super-diversity of the Birmingham population and the need to provide an individualised service. Families living with disadvantage and/or discrimination linked to issues of diversity may be more vulnerable to poor outcomes and are more likely to require a pathway response. Our pathways will be person-centred and encourage families to set their own goals.

The Early Years Health and Wellbeing Service will work alongside other professionals; an example of this is the proposed integrated working within the designated sites including:

- Midwives
- Advice services
- Housing surgeries
- Depart of Work & Pensions / Job Centre Plus
- Family Support, and more



The Hubs will have space and facilities (large community rooms and smaller rooms for one-to-one sessions) which will be bookable by partner agencies.

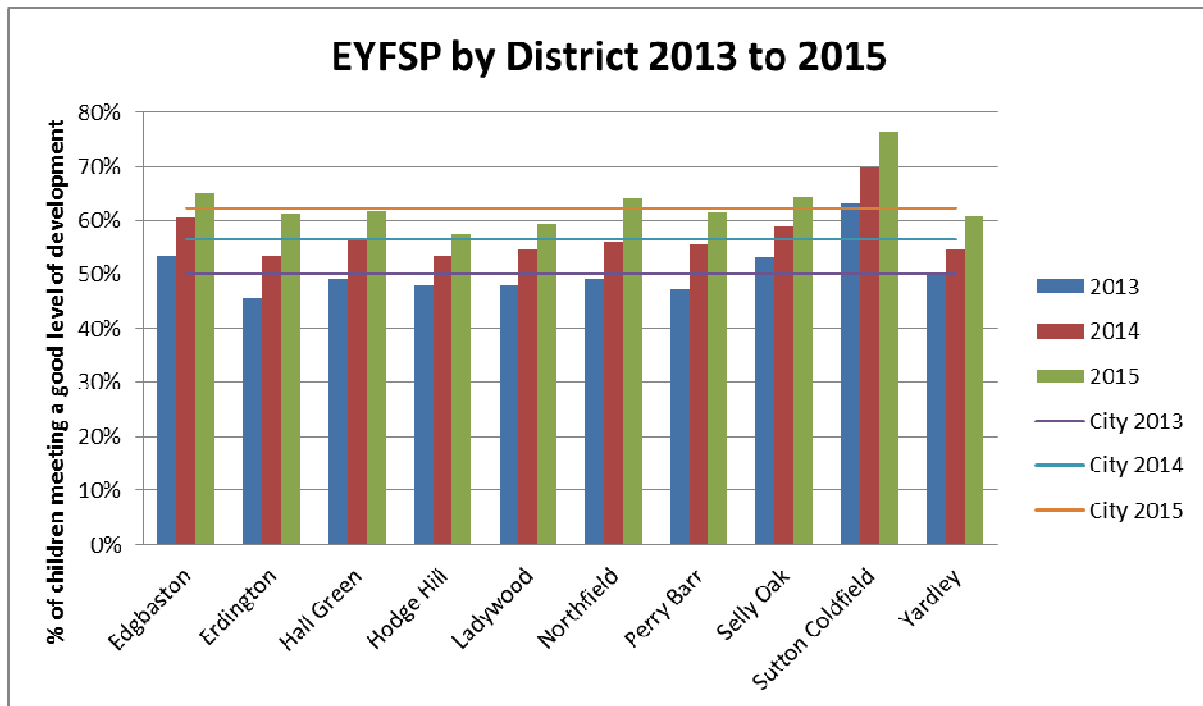
Relationships with the wider system to support service uptake will:

- The service will be notified of pre-school children in a number of ways to ensure we are aware of all children in Birmingham. One of the services strategic partners, Birmingham Community Healthcare NHS FT (BCHC), is the provider of the Child Health Information Service (CHIS) and School Health Advisory service. They already have systems in place through CHIS to ensure we are notified of all viable pregnancies at 20 weeks gestation, all new-born children and all children who move into the city and register with a GP.
- The service have established information sharing processes for asylum seeker children who arrive into Birmingham and are placed in Stone Road or other G4S initial accommodation. This allows for the completion of assessments looking at the needs for this vulnerable group, and has on-going processes in place to share information as children are moved to dispersal accommodation.
- The service will have established networks with local teams, including the Local Authority team that work with children not in school, to support safe practice and information sharing about pre-school children that professionals identify through other means.
- All existing networks from across the Partnership will support the identification of marginalised and unknown children. Our recently established Stone Road Stakeholder group facilitated information sharing about a group of homeless families housed in a motorway service station hotel, allowing existing services to respond to unmet need. We will build on these networks to identify vulnerable children.

10. District Operating Model

The Early Years Health and Wellbeing Service is a city-wide service. However to reflect the objective of connecting with local communities the service delivery model will be planned and operated on a district level basis.

Within Birmingham, overall performance at Foundation Stage has improved over time, but significant inequality still exists. Sutton Coldfield stands out as the best performing district, while Hodge Hill and Ladywood districts are the lowest performance. Both districts are below the city average for all 3 years.



Source: Birmingham City Council 2016

The district model has further benefits as it is co-terminus with other interdependent services within the city for example Team Around the Family (TAF) and the Birmingham Education Partnership (BEP). This will enable effective partnership working and pathways to be developed and maintained.

At a District level the following principles have been used within planning:

- There will be a minimum of one main site (Hub) per district providing access to the full range of services for a minimum period of 9am – 5pm Monday to Friday
- The buildings defined as Hubs will be registered Children's Centres (there may be more than one Hub in a registration) and will comply fully with Ofsted regulations (2013)
- All Hub buildings will offer a full year round service, as opposed to term time provision
- The number of under 5's in each district, levels of deprivation and also the needs assessment have been used to confirm the number of Hubs and local

community venues required per district which means each district will differ in service location offer according to their need

- The views of the public have been taken into account in defining how services should be delivered at a local level
- Care has been taken to ensure a good geographical spread of services across the districts to enable accessibility for different communities

10.1 Edgbaston

Children's Needs

Within the Edgbaston district 8% of the population are under 5 years old which equates to approximately 6,845 (Source BCC 2016). The Edgbaston ward contains the least children under 5 within this district.

The rate of children achieving good at Early Years Foundation Stage (EYFS) assessments in Edgbaston district is above the city average (63.7%), with all wards having a higher rate than the city. The Harborne ward has the best rate with 69.7%, closely followed by Edgbaston ward with 69.7%.

This leaves 356 children who have not achieved good at EYFS across the district, with Bartley Green and Quinton wards containing over 100 children.

Recommendations from the consultation findings

- **Agreement with the proposed service delivery locations within the district**

Overall the respondents were split in their agreement for the proposed service delivery locations in Edgbaston with only a very slight variance - 42.5% of respondents were in agreement and 42.9% of respondents did not agree with the proposal. As such, a majority agreement was not received.

In line with these findings, it is recommended that the delivery locations are reviewed to take account of views expressed in the consultation.

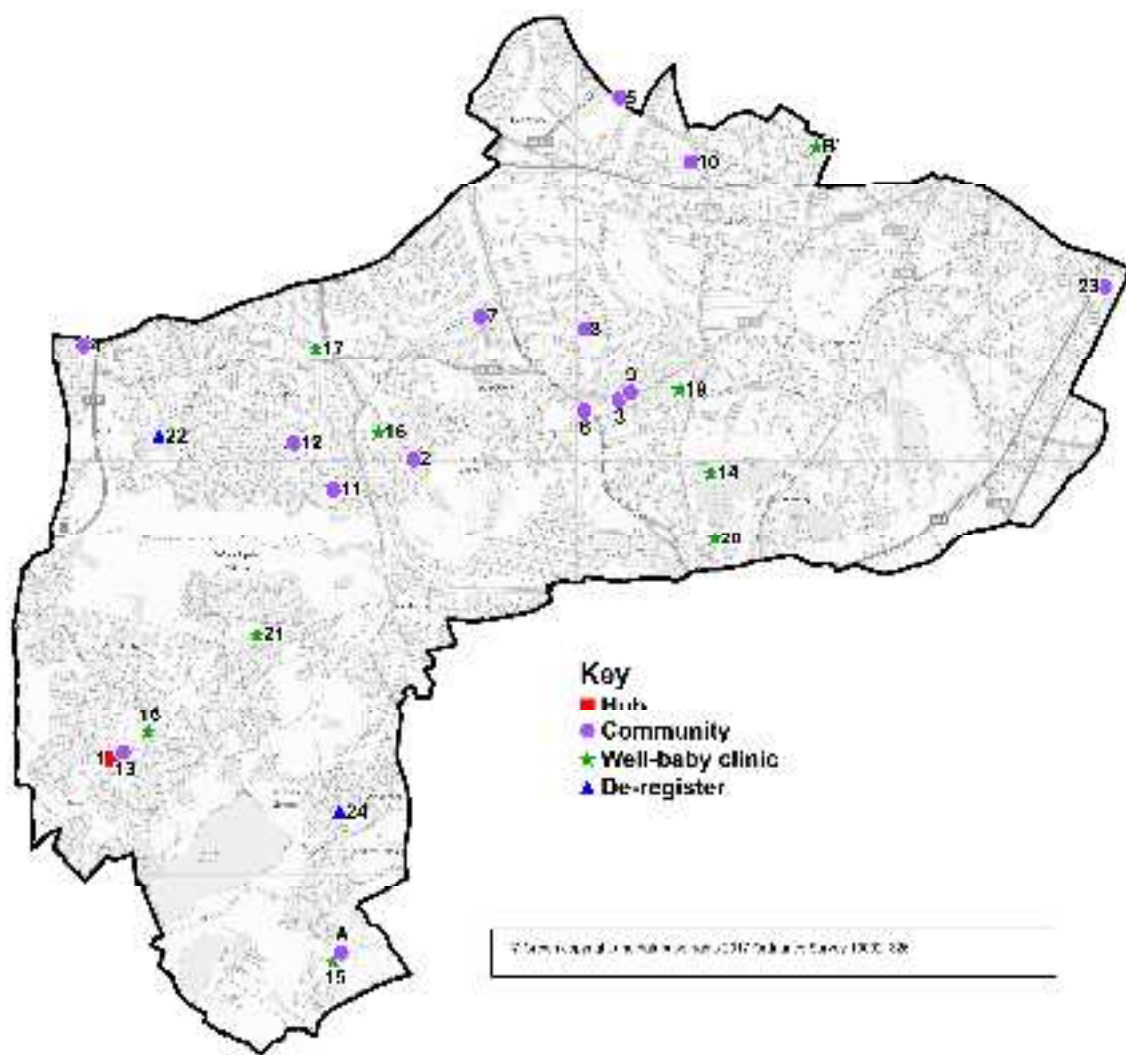
- **Agreement that the proposed locations will enable access to required services within the district**

Overall, 44.0% of respondents agreed that the proposed delivery locations would enable them to access the services that they require within Edgbaston, with 23.9% strongly agreeing and 20.1% somewhat agreeing.

In line with these findings, it is recommended that the proposed delivery locations are accepted as accessible options for the provision of services in Edgbaston District.

Revised Proposal following consultation

Taking account of a combined view of the needs of the area and views expressed by through the consultation, the following is the proposed operating model for the Edgbaston district:



Please note that the references refer back to the public consultation document.

Map Ref	Venue	Road	Service Type
A	Holloway Hall	Ley Hill	Community Location
B	Karis Medical Centre	Waterworks Road	Well-baby Clinic
1	Doddington Children's Centre	Doddington Grove	Hub
2	Keystone Children's Centre	Purbeck Croft	Community Location
3	St Johns Church	Harborne High Street	Community Location
4	Christchurch	Hagley Road West	Community Location
5	St Germain's Stay and Play	Portland Road	Community Location
6	Harborne Baptist Church	Harborne Park Road	Community Location
7	St Faith and St Laurence Church	Balen Road	Community Location

8	Moorpool Hall	The Circle	Community Location
9	Harborne Library	Harborne High Street	Community Location
10	St Augustine's House	Lyttleton Road	Community Location
11	St Boniface Church	Quinton Road West	Community Location
12	Worlds End Primary School	Worlds End Lane	Community Location
13	Milebrook Hall	Field Lane	Community Location
14	Birmingham Women's Hospital	Mindelsohn Way	Well-baby Clinic
15	Ley Hill Health Centre	Holloway	Well-baby Clinic
16	Selcroft Clinic Baby Weighing Clinic	Selcroft Avenue	Well-baby Clinic
17	Quinton Medical Practice	Quinton Lane	Well-baby Clinic
18	Bartley Green Medical Centre	Romsley Road	Well-baby Clinic
19	Harborne Medical Centre	York Street	Well-baby Clinic
20	The Barberry Clinic	Vincent Drive	Well-baby Clinic
21	Woodgate Valley Primary Care Centre	Stevens Ave	Well-baby Clinic
22	Four Dwellings Children's Centre	Quinton Road	De-register
23	Lillian de Lissa Children's Centre	Bellevue	Community Location
24	Shenley Fields Centre	Woodcock Lane	De-register

1. Approve the revised service delivery model for the Edgbaston district for implementation as detailed above
 - a. One Hub location within the Bartley Green ward (currently Doddington Children's Centre)
 - b. Fourteen community locations
 - c. Nine well-baby clinics
2. Approve the de-registration of the following children's centres, this will mean that children centre services will no longer be provided from these locations.
 - a. Four Dwellings Children's Centre
 - b. Shenley Fields Children's Centre
3. Approve the de-registration of Keystone Children's Centre, services will be offered from this location but not the full children's centre service offer.
4. Approve the change for Lillian de Lissa Children's Centre from closure to de-registration to continue as a community delivery location with sessional delivery.

10.2 Erdington

Children's Needs

Within the Erdington district 9% of the population are under 5 years old. There are also a high rate of children being supported by the council's social services within this district (Children in Care, Child Protection Plans and Children in Need).

The rate of children achieving good at Early Years Foundation Stage (EYFS) assessments in Erdington district is slightly below the city average (63.7%), with a split between the wards. Kingstanding and Stockland Green wards have the best rates with 67.2% and 66.1% respectively, both above the city rate.

Erdington and Tyburn wards have below city rates, with 58.6% and 58.4% respectively.

This leaves 553 children who have not achieved good at EYFS across the district, with all wards containing over 100 children and Tyburn ward nearly 150.

Recommendations from the consultation findings

- **Agreement with the proposed service delivery locations within the district**

Overall respondents agreed with the proposed service delivery locations in Erdington District (43.9%) with 24.7% strongly agreeing and 19.3% somewhat agreeing.

In line with these findings it is recommended that the service delivery locations identified for Erdington District are utilised within the new service delivery model.

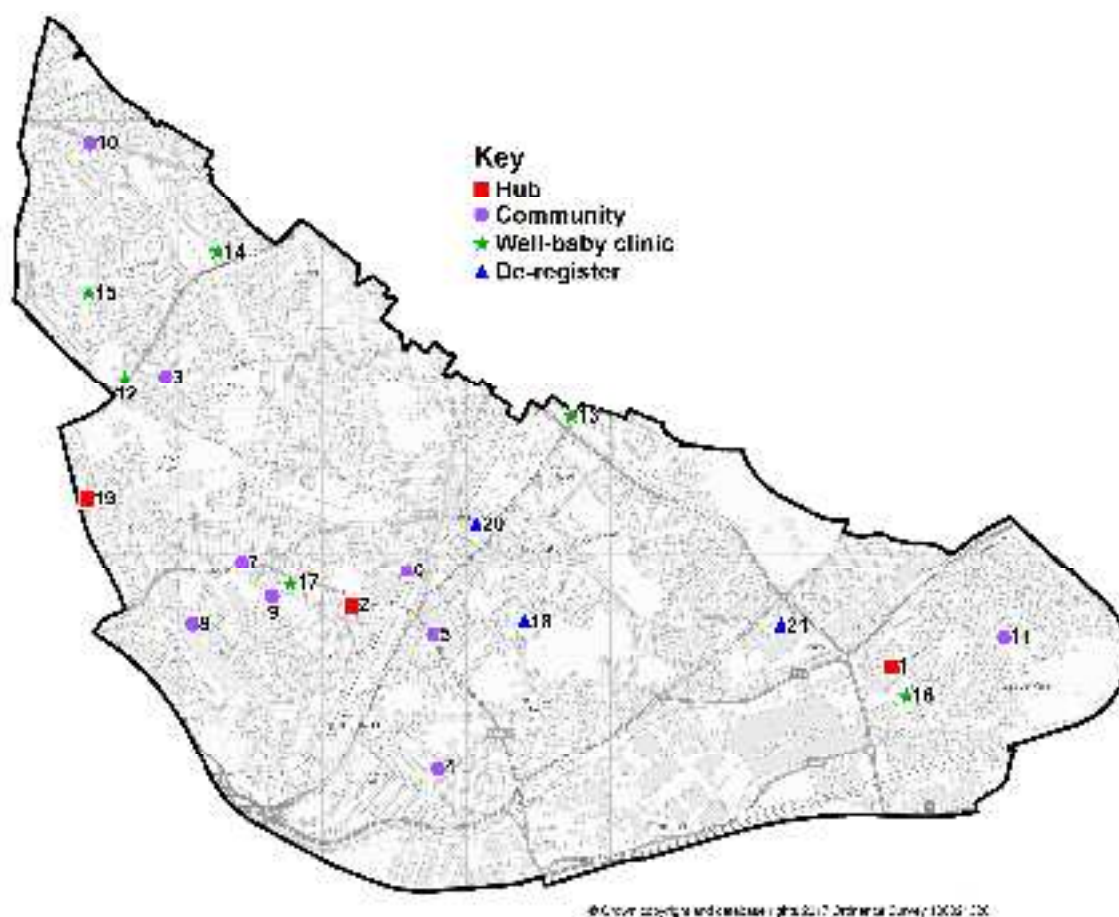
- **Agreement that the proposed locations will enable access to required services within the district**

Overall respondents agreed that the proposed delivery locations would enable them to access the services that they required in Erdington (46.2%) with 26.9% of respondents strongly agreeing and 19.3% somewhat agreeing.

In line with these findings, it is recommended that the proposed delivery locations are accepted as accessible options for the provision of services in Erdington District.

Revised Proposal following consultation

Taking account of a combined view of the needs of the area and views expressed by through the consultation, the following is the proposed operating model for the Erdington district:



Please note that the references refer back to the public consultation document.

Map Ref	Venue	Road	Service Type
1	Castle Vale Children's Centre	Yatesbury Avenue	Hub
2	Featherstone Children's Centre	29 Highcroft Road	Hub
3	Story Wood Children's Centre	Hastings Road	Community Location
4	Erdington Hall Children's Centre	Ryland Road	Community Location
5	Erdington Six Ways Baptist Church	Wood End Road	Community Location
6	Bethany Pentecostal Church	South Road	Community Location
7	St Marks Church Hall	Bleak Hill Road	Community Location
8	George Road Baptist Church	George Road	Community Location
9	Stockland Green Methodist Church	Slade Road	Community Location
10	Kingstanding	Kings Road	Community Location

	Methodist Church		
11	St Cuthbert of Lindisfarne Church	St Cuthbert Place	Community Location
12	College Road Surgery	College Road	Well-baby Clinic
13	Dr M E Bhatti Surgery	Sutton Road	Well-baby Clinic
14	Hillcrest Surgery	Twickenham Road	Well-baby Clinic
15	Warren Farm Health Centre	Warren Farm Road	Well-baby Clinic
16	Castle Vale Primary Care Centre	Tangmere Drive	Well-baby Clinic
17	Stockland Green Primary Care Trust	Reservoir Road	Well-baby Clinic
18	Barney's Children's Centre	Spring Lane	De-register
19	Lakeside Children's Centre	Lakes Road	Hub
20	Osborne Children's Centre	Station Road	De-register
21	Pype Hayes Children's Centre	Gunter Road	De-register

1. Approve the revised service delivery model for the Erdington district for implementation
 - a. Three Hub locations within the Tyburn, Stockland Green and Kingstanding wards (currently Castle Vale, Featherstone and Lakeside Children's Centres)
 - b. Nine community locations
 - c. Six well-baby clinics
2. Approve the de-registration of the following children's centres, this will mean that children centre services will no longer be provided from these locations.
 - a. Barney's Children's Centres
 - b. Osborne Children's Centres
 - c. Pype Hayes Children's Centres
3. Approve the change to Lakeside Children's Centre to Hub site, which will be replaced with the revised proposal to de-register and reduce delivery of services from Story Wood Children's Centre this will include additional public consultation within this district. During this period the Story Wood Children's Centre will remain open as normal.
4. Approve the de-registration of Erdington Hall Children's Centre, services will be offered from this location but not the full children's centre service offer.

10.3 Hall Green

Children's Needs

Within the Hall Green district 12% of the population are under 5 years old.

The rate of children achieving good at Early Years Foundation Stage (EYFS) assessments in Hall Green district is slightly below the city average (63.7%), with a split between the wards. Hall Green and Moseley and Kings Heath wards have the best rate with 68.7% and 67.0% respectively, both above the city rate.

Sparkbrook and Springfield wards have below city rates, with 61.2% and 59.8% respectively.

This leaves 701 children who have not achieved good at EYFS across the district, with all wards containing over 100 children, except Moseley and Kings Heath. Sparkbrook and Springfield wards have well over 200 each.

Recommendations from the consultation findings

- **Agreement with the proposed service delivery locations within the district**

Overall respondents were in agreement with the proposed service delivery locations for Hall Green (44.7%), with 24.7% strongly agreeing and 20.0% somewhat agreeing.

In line with these findings it is recommended that the service delivery locations identified for Hall Green District are utilised within the new service delivery model.

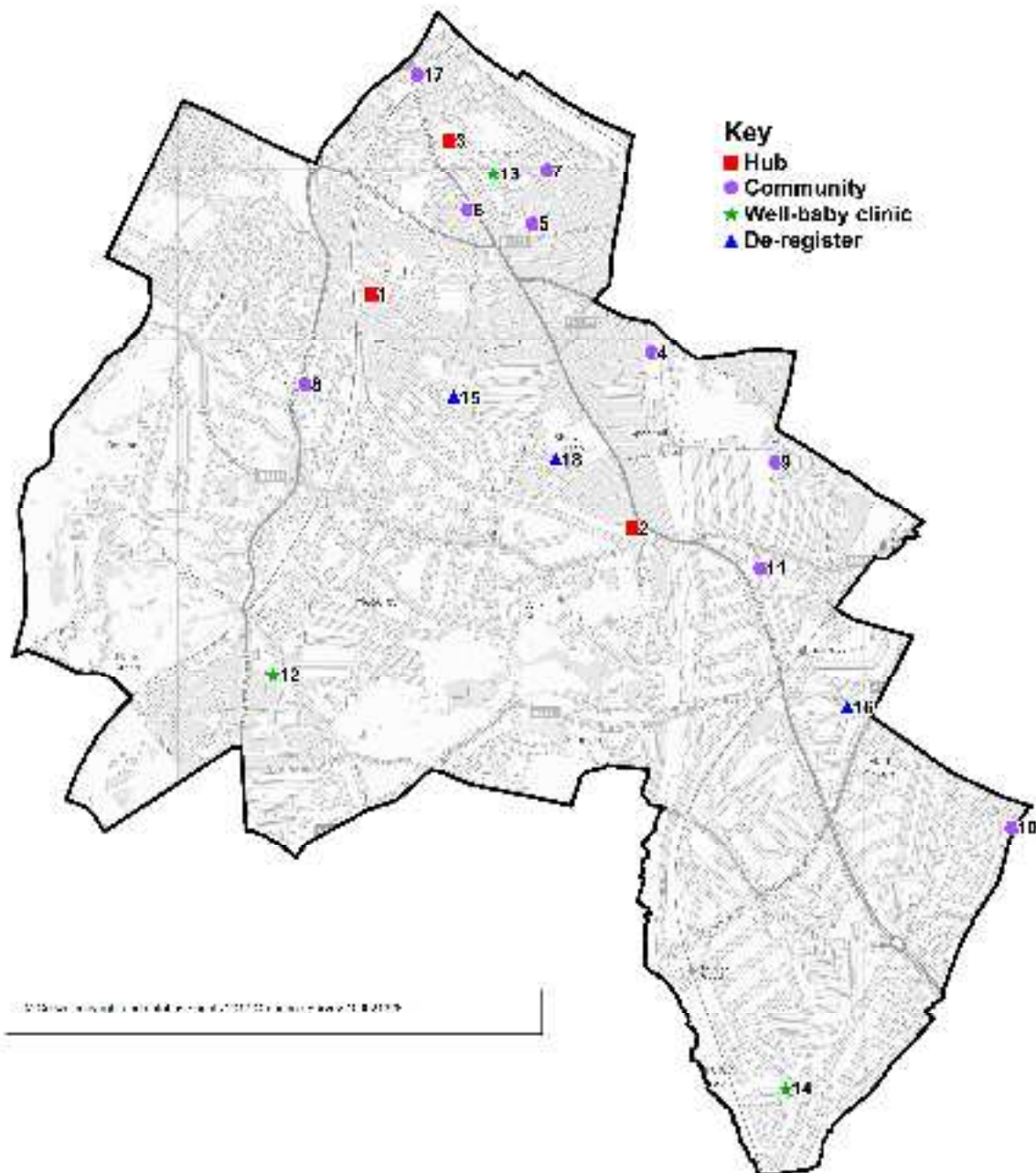
- **Agreement that the proposed locations will enable access to required services within the district**

Overall respondents were in agreement that the proposed service locations would enable them to access the services they require in Hall Green District (48.5%), with 26.8% strongly agreeing and 21.7% somewhat agreeing.

In line with these findings, it is recommended that the proposed delivery locations are accepted as accessible options for the provision of services in Hall Green District.

Revised Proposal following consultation

Taking account of a combined view of the needs of the area and views expressed by through the consultation, the following is the proposed operating model for the Hall Green district:



Please note that the references refer back to the public consultation document.

Map Ref	Venue	Road	Service Type
1	Balsall Heath Children's Centre	Hertford Street	Hub
2	Springfield Children's Centre	Springfield Road	Hub
3	Sparkbrook Children's Centre	Braithwaite Road	Hub
4	Greet Children's Centre (now known as 'Springfield Children's Centre @ Percy Road')	Percy Road	Community Location

5	Little Stars Conway Primary	Conway Road	Community Location
6	Ladypool School	Stratford Road	Community Location
7	Gracelands Nursery	Grace Road	Community Location
8	Park Hill School	Alcester Road	Community Location
9	St Edmunds Church	Readings Lane	Community Location
10	Hall Green (Gospel Oak) Children's Centre	Redstone Farm Road	Community Location
11	Hall Green United Church	Reddings Lane	Community Location
12	Poplar Road Primary Care Centre	Poplar Road	Well-baby clinic
13	Sparkbrook Community and Health Centre	Grantham Road	Well-baby clinic
14	Baldwins Lane Surgery	Baldwins Lane	Well-baby clinic
15	Anderton Park Children's Centre	Dennis Road	De-register
16	Job Marston Children's Centre	School Road	De-register
17	Muath Children's Centre	Stratford Road	Community Location
18	Park Road Children's Centre	Park Road	De-register

1. Approve the revised service delivery model for the Hall Green district for implementation
 - a. Three Hub locations within the Sparkbrook and Springfield wards (currently Balsall Heath, Sparkbrook and Springfield Children's Centres)
 - b. Nine community locations
 - c. Three well-baby clinics
2. Approve the de-registration of the following children's centres, this will mean that children centre services will no longer be provided from these locations
 - a. Anderton Park Children's Centre
 - b. Job Marston Children's Centre
 - c. Park Road Children's Centre
3. Approve the de-registration of Muath Children's Centre, services will be offered from this location but not the full children's centre service offer.

10.4 Hodge Hill

Children's Needs

Within the Hodge Hill district 15% of the population are under 5 years old. There is also a higher referral rate to BCC run services for disabled children than would have been expected in 2012/13 and 2013/14 – 19.8% of the referrals (2013/14) were received from this ward.

The rate of children achieving good at Early Years Foundation Stage (EYFS) assessments in Hodge Hill district is below the city average (63.7%), with all wards having a lower rate than the city. Hodge Hill ward has the best rate with 59.6%, closely followed by Washwood Heath ward with 59.5%.

This leaves 1,045 children who have not achieved good at EYFS across the district, with all Bordesley Green containing over 300 children and Washwood Heath ward over 250.

Recommendations from the consultation findings

- **Agreement with the proposed service delivery locations within the district**

Overall respondents were in agreement with the proposed service delivery locations in Hodge Hill District (45.1%), with 34.5% of respondents strongly agreeing and 10.6% somewhat agreeing.

In line with these findings it is recommended that the service delivery locations identified for Hodge Hill District are utilised within the new service delivery model.

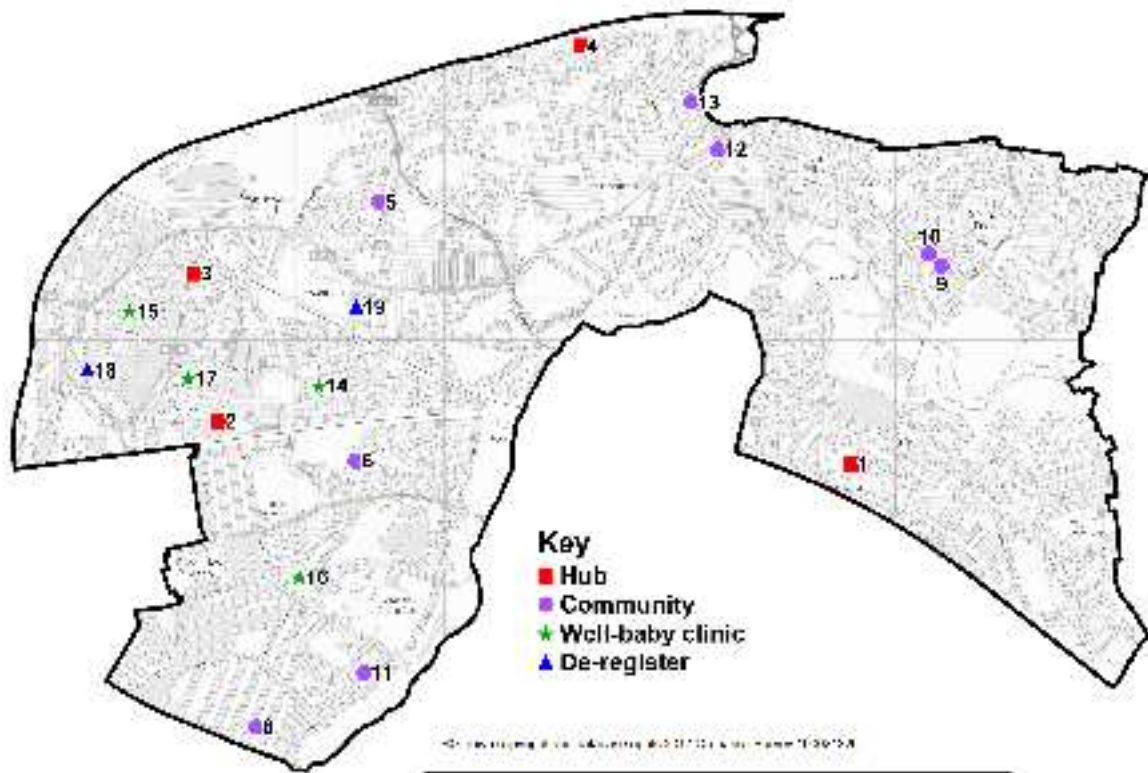
- **Agreement that the proposed locations will enable access to required services within the district**

Overall respondents were in agreement that the proposed delivery locations would enable them to access the services they require in Hodge Hill District (47.2%), with 33.1% of respondents strongly agreeing and 14.1% of respondents somewhat agreeing.

In line with these findings, it is recommended that the proposed delivery locations are accepted as accessible options for the provision of services in Hodge Hill District.

Revised Proposal following consultation

Taking account of a combined view of the needs of the area and views expressed by through the consultation, the following is the proposed operating model for the Hodge Hill district:



Please note that the references refer back to the public consultation document.

Map Ref	Venue	Road	Service Type
1	Kitts Green and Shard End Children's Centre	Ridpool Road	Hub
2	Anthony Road Children's Centre	80 Anthony Road	Hub
3	Highfield (Dyson Gardens) Children's Centre	Highfield Road	Hub
4	Tame Valley Children's Centre	Chillinghome Road	Hub
5	Ward End Children's Centre (Sunshine End)	Ingleton Road	Community Location
6	Saltley Well Being Centre	Broadway Avenue	Community Location
7	Community Lodge Children's Centre	Heather Road	Community Location
8	Khidmat Centre	Heather Road	Community Location
9	Welcome Change Community Centre	Ownall Road	Community Location
10	Shard End Library	All Saints Square, Shard End Crescent	Community Location
11	Starbank school	Starbank Lane	Community Location

12	Blue Cross Church	Coleshill Road	Community Location
13	St Wilfred's Community Centre	Shawsdale Road	Community Location
14	Fernbank Medical Centre	Alum Rock Road	Well-baby clinic
15	Greenfield Medical Practice	Havelock Road	Well-baby clinic
16	Omnia Practice, Yardley Green Medical Centre	Yardley Green Road	Well-baby clinic
17	Washwood Heath Health & Wellbeing Centre	Clodeshall Road	Well-baby clinic
18	Adderley Children's Centre	St Saviours Road	De-register
19	Washwood Heath Children's Centre	Sladefield Road	De-register

1. Approve the revised service delivery model for the Hodge Hill district for implementation
 - a. Four Hub locations within the Washwood Heath, Shard End and Hodge Hill wards (currently Kitts Green and Shard End, Anthony Road, Tame Valley and Highfield Dyson Gardens Children's Centres)
 - b. Nine community locations
 - c. Four well-baby clinics
2. Approve the de-registration of the following children's centres, this will mean that children centre services will no longer be provided from these locations
 - a. Adderley Children's Centre
 - b. Washwood Heath Children's Centre

10.5 Ladywood

Children's Needs

Within the Ladywood district 13% of the population are under 5 years old. There is also a high referral rate to BCC run services for disabled children than would have been expected in 2012/13 and 2013/14 – 15.2% of the referrals (2013/14) came from within this district.

The rate of children achieving good at Early Years Foundation Stage (EYFS) assessments in Ladywood district is below the city average (63.7%), with all wards except Aston having a lower rate than the city. Aston ward has the best rate with 64.0%. Soho ward has the worst rate with 58.9%.

This leaves 775 children who have not achieved good at EYFS across the district, with all wards except Ladywood containing over 200 children.

Recommendations from the consultation findings

- **Agreement with the proposed service delivery locations within the district**

Overall the respondents were split in their agreement for the proposed service delivery locations in Ladywood – 41.9% of respondents were in agreement and equally 41.9% of respondents did not agree with the proposal. 12.3% of respondents neither agreed nor disagreed with the proposal in the area. As such, a majority agreement was not received for this proposal in Ladywood.

In line with these findings, it is recommended that the delivery locations are reviewed to take account of views expressed in consultation.

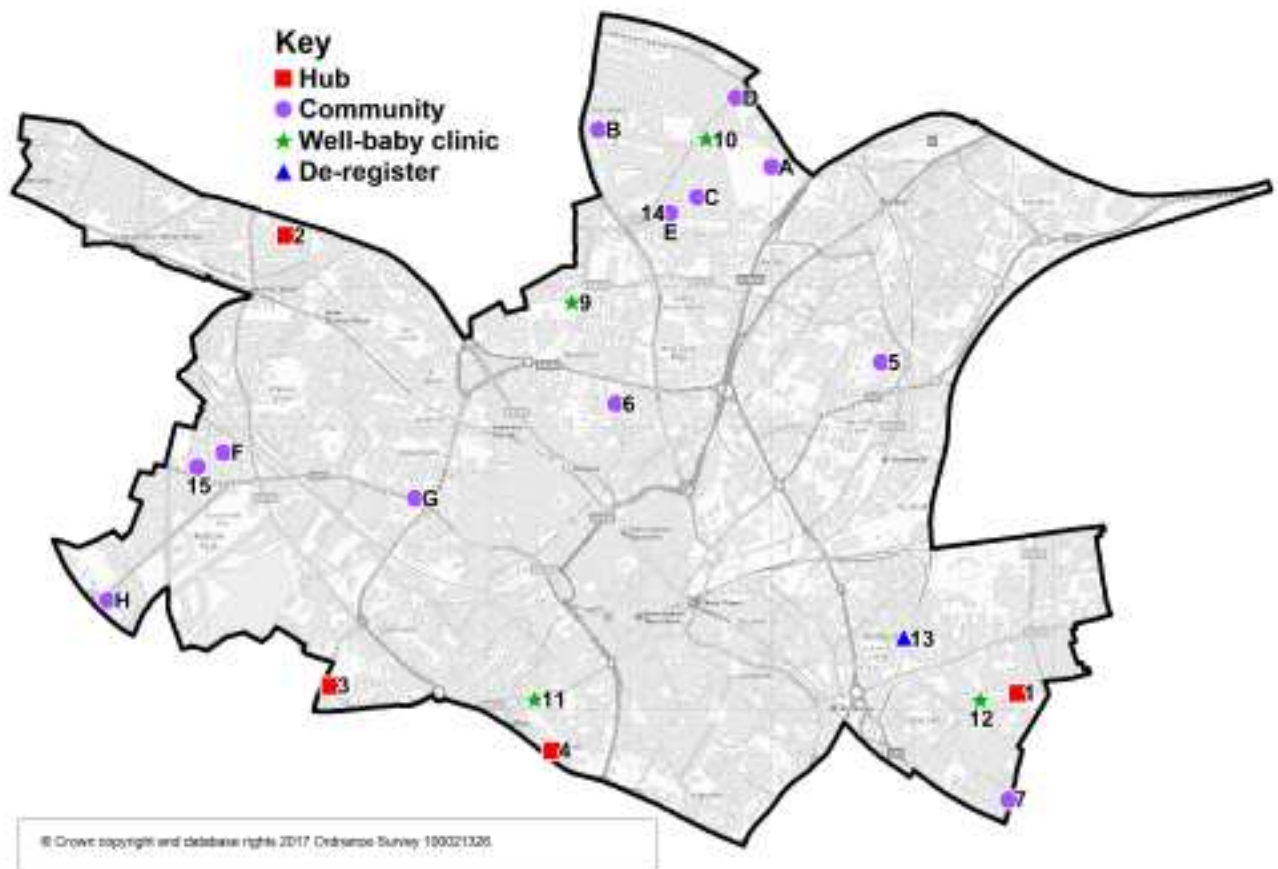
- **Agreement that the proposed locations will enable access to required services within the district**

Overall respondents were in agreement that the proposed service delivery locations would enable them to access the services that they require in Ladywood District (49.2%), with 28.0% of respondents strongly agreeing and 21.2% of respondents somewhat agreeing.

In line with these findings, it is recommended that the proposed delivery locations are accepted as accessible options for the provision of services in Ladywood District.

Revised Proposal following consultation

Taking account of a combined view of the needs of the area and views expressed by through the consultation, the following is the proposed operating model for the Ladywood district:



Please note that the references refer back to the public consultation document.

Map Ref	Venue	Road	Service Type
A	Aston Wellbeing Centre	Trinity Road	Community Location
B	Birchfield Library	Trinity Road	Community Location
C	Aston Library	Whitehead Road	Community Location
D	Birmingham Settlement	Witton Road	Community Location
E	Prince Albert Primary School	Albert Road	Community Location
F	Summerfield Junior and Infant School	Cuthbert Road	Community Location
G	Spring Hill Library	Spring Hill	Community Location
H	City Road Baptist Church	City Road	Community Location
1	Bertram Children's Centre	Bertram Road	Hub
2	Soho Children's Centre	Louise Road	Hub
3	Ladywood Children's Centre	Plough and Harrow Road	Hub
4	St Thomas Children's Centre	Bell Barn Road	Hub
5	Bloomsbury Children's Centre	Bloomsbury Street	Community Location

6	Brearley Children's Centre	Brearley Street	Community Location
7	Golden Hillock Children's Centre	Golden Hillock Road	Community Location
9	Newtown Health Centre	Melbourne Avenue	Well-baby clinic
10	Aston Health Centre	Trinity Road	Well-baby clinic
11	Attwood Green Health Centre	Bath Row	Well-baby clinic
12	Small Heath Medical Centre	Great Wood Road	Well-baby clinic
13	Bordesley Village Children's Centre	Emmeline Street	De-register
14	Six Ways Children's Centre	Albert Road	De-register
15	Summerfield Children's Centre	Cape Street	Community Location

1. Approve the revised service delivery model for the Ladywood district for implementation
 - a. Four hub locations within the Nechells, Soho and Ladywood wards (currently Bertram, Soho, St Thomas and Ladywood Children's Centres)
 - b. Twelve community locations
 - c. Four well-baby clinics
2. Approve the de-registration of the following children's centres, this will mean that children centre services will no longer be provided from these locations
 - a. Bordesley Village Children's Centre
 - b. Six Ways Children's Centre
3. Approve the de-registration of Bloomsbury, Brearley and Golden Hillock Children's Centre, services will be offered from this location but not the full children's centre service offer.
4. Approve the change for Summerfield Children's Centre from closure to de-registration to continue as a community delivery location with sessional delivery.

10.6 Northfield

Children's Needs

Within the Northfield district 9% of the population are under 5 years old. There is also a high rate of children being supported by the council's social services within this district (Children in Care, Child Protection Plans and Children in Need).

The rate of children achieving good at Early Years Foundation Stage (EYFS) assessments in Northfield district are below the city average (63.7%), with all wards

having a lower rate than the city. Northfield ward has the best rate, but is still 1.5% below the city's average.

This leaves 599 children who have not achieved good at EYFS across the district, with all wards containing over 100 children.

Recommendations from the consultation findings

- **Agreement with the proposed service delivery locations within the district**

Overall 30.1% of respondents agreed with the proposed service delivery locations for Northfield, with 11.5% of respondents strongly agreeing and 18.6% of respondents somewhat agreeing.

A majority agreement for the proposed service locations was not reached in this District.

In line with these findings, it is recommended that the delivery locations are reviewed to take account of views expressed in consultation.

- **Agreement that the proposed locations will enable access to required services within the district**

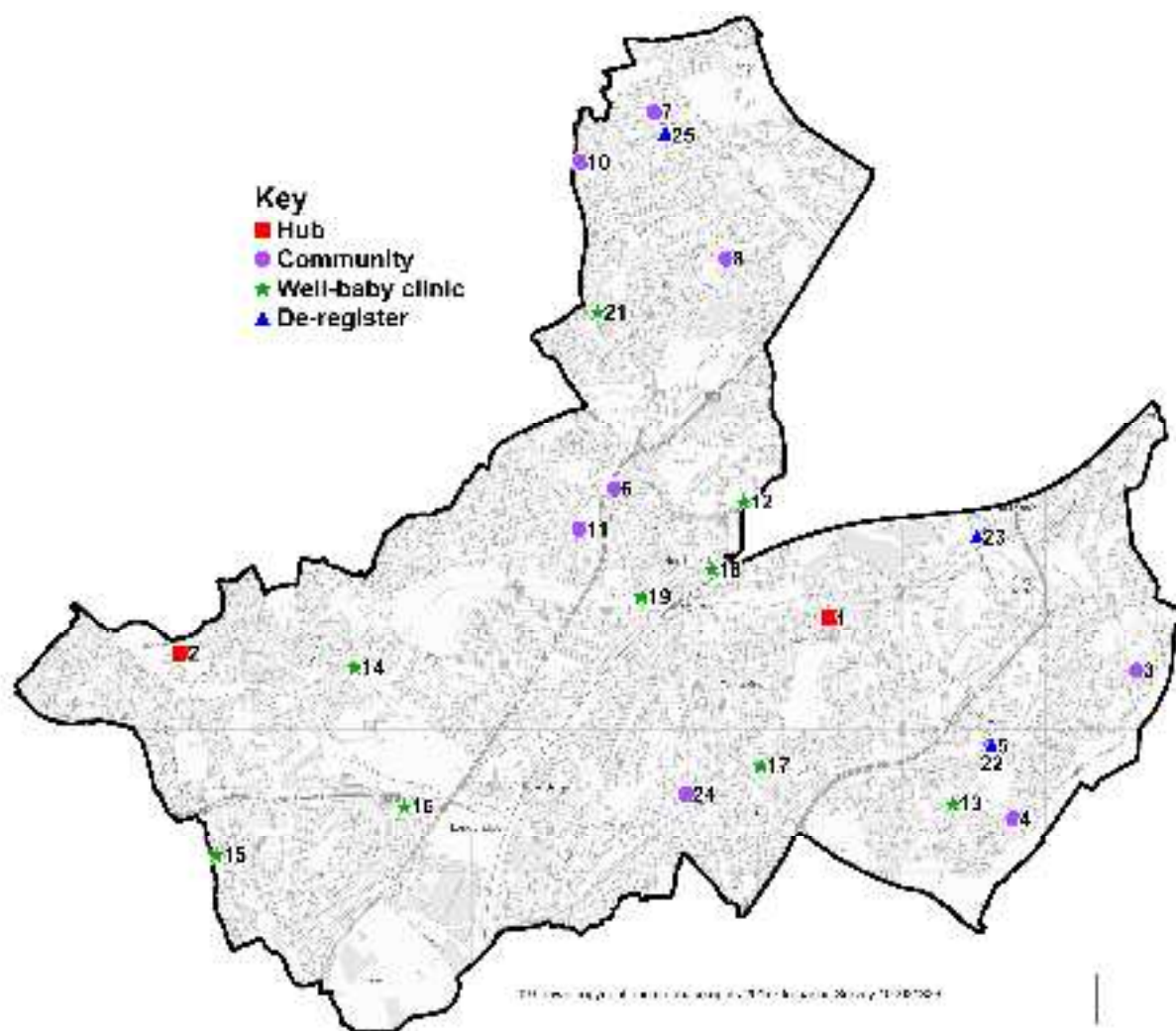
Overall, 35.3% of respondents agreed that the proposed delivery locations would enable them to access the services they require in Northfield, with 16.0% of respondents strongly agreeing and 19.2% of respondents somewhat agreeing.

A majority agreement that the proposed locations would enable access to the services required was not received in this District.

In line with these findings, it is recommended that the delivery locations are reviewed to take account of views expressed in consultation.

Revised Proposal following consultation

Taking account of a combined view of the needs of the area and views expressed by through the consultation, the following is the proposed operating model for the Northfield district:



Please note that the references refer back to the public consultation document.

Map Ref	Venue	Road	Service Type
N/A – previously 9	Holloway Hall	Ley Hill	Location within the Edgbaston district
1	Wychall Primary School - Children's Centre	Middle Field Road	Hub
2	Frankley Plus Children's Centre	New Street	Hub
3	Greaves Hall	Greaves Square	Community Location
4	Hawkesley Community Centre	Edgewood Road	Community Location
5	Primrose Hill Community Project	Teviot Grove	Community Location
6	Northfield Baptist Church	Bristol Road South	Community Location

7	Weoley Castle Library	Beckbury Road	Community Location
8	Northfield Manor Primary School	Swarthmore Road	Community Location
10	St Gabriel's Church	Marston Road	Community Location
11	Northfield Health Centre	St Heliers Road	Community Location
12	Bunbury Road Surgery	Bunbary Road	Well-baby clinic
13	Hawkesley Health Centre	Shannon Road	Well-baby clinic
14	Hollymoor Health Centre	Manor Park Grove	Well-baby clinic
15	Leach Heath Medical Centre	Leach Heath Lane	Well-baby clinic
16	Longbridge Methodist Church	Bristol Road South	Well-baby clinic
17	West Heath Primary Care	Rednal Road	Well-baby clinic
18	Woodland Road Surgery	Woodland Road	Well-baby clinic
19	Northfield Health Centre	Quarry Lane	Well-baby clinic
20	Millennium Medical Centre	Weoley Castle Road	Well-baby clinic
21	Shenley Green Surgery	Shenley Green Lane	Well-baby clinic
22	Kings Norton Children's Centre	Teviot Grove	De-register
23	Kings Norton Camp Lane Children's Centre	Westhill Road	De-register
24	Merrishaw Children's Centre	Merrishaw Road	Community Location
25	Weoley Castle Children's Centre	Weoley Castle Road	De-register

1. Approve the revised service delivery model for the Northfield district for implementation
 - a. Two Hub locations within the Kings Norton and Longbridge wards (currently Wychall and Frankley Plus Children's Centres)
 - b. Nine community locations
 - c. Ten well-baby clinics
2. Approve the change for Merrishaw Children's Centre from closure to de-registration to continue as a community delivery location with sessional delivery.
3. Approve the de-registration of the following children's centres, this will mean that children centre services will no longer be provided from these locations
 - a. King's Norton Children's Centre

- b. King's Norton Camp Lane Children's Centre
- c. Weoley Castle Children's Centre

10.7 Perry Barr

Children's Needs

Within the Perry Barr district 10% of the population are under 5 years old. There is also a high referral rate to BCC run services for disabled children than would have been expected in 2012/13 and 2013/14.

The rate of children achieving good at Early Years Foundation Stage (EYFS) assessments in Perry Barr district is above the city average (63.7%), with a split between wards, two having a higher rate than the city and two below the city.

Oscott ward has the best rate above the city average, while Lozells and East Handsworth ward has the worst rate below the city's average.

This leaves 579 children who have not achieved good at EYFS across the district, with Lozells and East Handsworth wards containing over 200 children.

Recommendation from the consultation findings

- **Agreement with the proposed service delivery locations within the district**

Overall, respondents were in agreement with the proposed service delivery locations in Perry Barr (56.1%), with a quarter of respondents (25.2%) strongly agreeing and almost a third of respondents (30.8%) somewhat agreeing.

In line with these findings it is recommended that the service delivery locations identified for Perry Barr District are utilised within the new service delivery model.

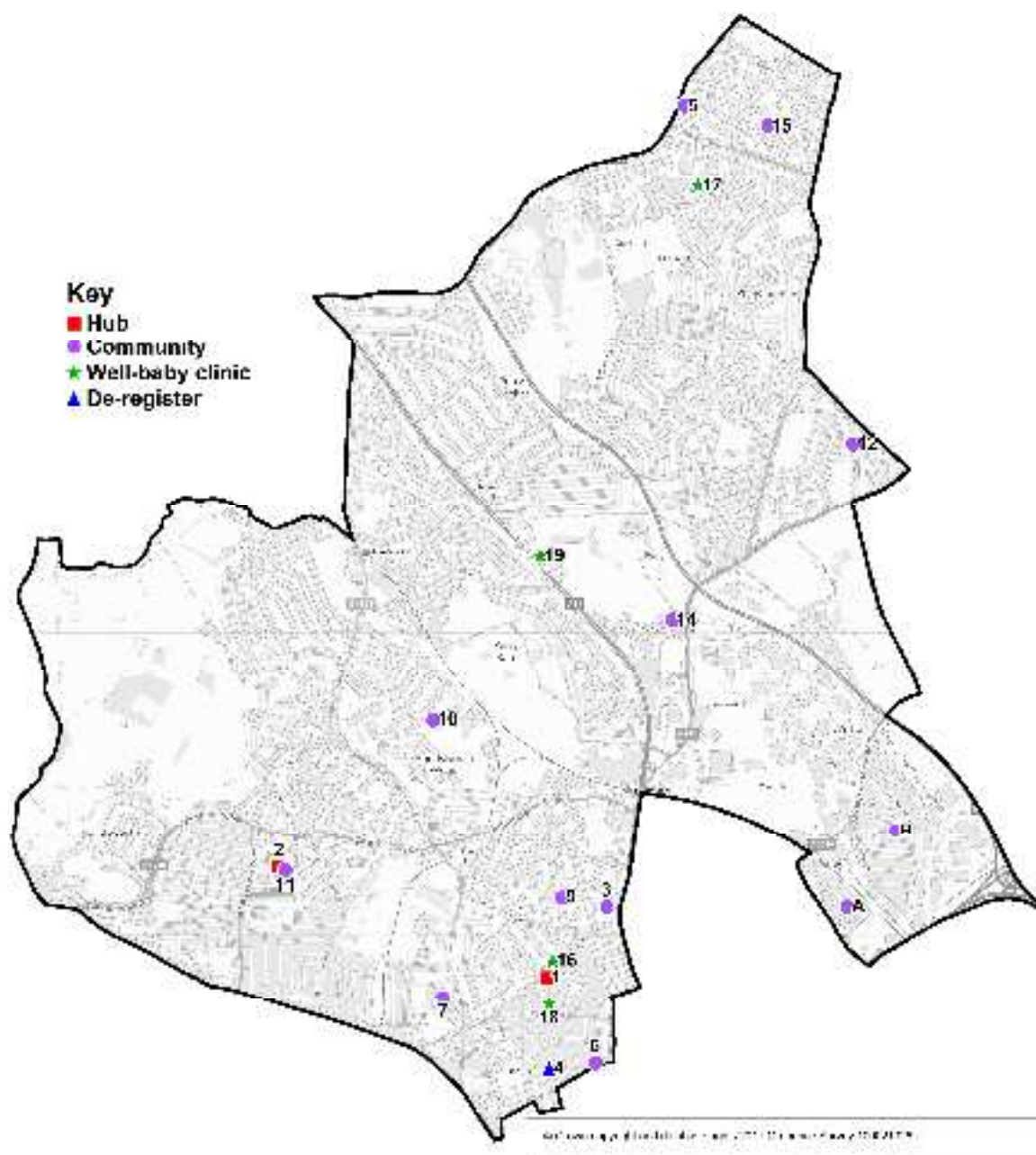
- **Agreement that the proposed locations will enable access to required services within the district**

Overall respondents were in agreement that the proposed delivery locations in Perry Barr would enable them to access the services they require (63.6%), with 29.9% strongly agreeing and 33.6% somewhat agreeing.

In line with these findings, it is recommended that the proposed delivery locations are accepted as accessible options for the provision of services in Perry Barr District.

Revised Proposal following consultation

Taking account of a combined view of the needs of the area and views expressed by through the consultation, the following is the proposed operating model for the Perry Barr district:



Please note that the references refer back to the public consultation document.

Map Ref	Venue	Road	Service Type
A	Yew Tree Community Junior and Infant School (NC)	Yew Tree Road	Community Location
B	Deykin Avenue Junior and Infant School	Deykin Avenue	Community Location
1	Lime Tree Aston Children's Centre	Heathfield Road	Hub
2	Rookery Children's Centre	Rookery Road	Hub
3	Birchfield Children's	Haughton Road	Community Location

	Centre		
4	Cherry Tree Children's Centre	Graham Street	De-register
5	Sundridge Children's Centre	Queslett Road	Community Location
6	Lozells Methodist Church	Gerrard Street	Community Location
7	Welford Primary School	Welford Road	Community Location
8	Anglesley Primary School	Anglesley Street	Remove from the model as venue no longer available
9	Westminster Primary School	Stamford Road	Community Location
10	Cherry Orchard Primary School	Cherry Orchard Road	Community Location
11	Laurel Road Community Sports Centre	Laurel Road	Community Location
12	The Elim Church	Warren Road	Community Location
13	The Circle Nursery	Kingstanding Road	Remove from the model
14	St John The Evangelist	Church Road	Community Location
15	St Marks Kingstanding Church	Bandywood Crescent	Community Location
16	Heathfield Family Centre	Heathfield Road	Well-baby clinic
17	The Oaks Medical Centre	Shady Lane	Well-baby clinic
18	Finch Road Primary Care Centre	Finch Road	Well-baby clinic
19	Tower Hill Partnership Medical Practice	Walsall Road	Well-baby clinic

1. Approve the revised service delivery model for the Perry Barr district for implementation
 - a. Two hub locations within the Kings Norton ward (currently Lime Tree and Rookery Children's Centres)
 - b. Twelve community locations
 - c. Four well-baby clinics
2. Approve the de-registration of Birchfield Children's Centre, services will be offered from this location but not the full children's centre service offer.
3. Approve the change for Cherry Tree Children's Centre from community location to de-registration/utilisation, this will mean that children centre services will no longer be provided from this location. Additional consultation will be required.

4. Approve the removal of The Circle Nursery from the model.

10.8 Selly Oak

Children's Needs

Within the Selly Oak district 8% of the population are under 5 years old. There is also a high rate of children being supported by the council's social services within this district (Children in Care, Child Protection Plans and Children in Need).

Rate of children achieving good at Early Years Foundation Stage assessments in Selly Oak district are above the city rate (63.7%), with all wards having a higher rate than the city, led by Bournville ward. However, there are still 396 children who have not achieved good at EYFS across the district, with all wards except Selly Oak containing over 100 children.

Recommendations from the consultation findings

- **Agreement with the proposed service delivery locations within the district**

Overall respondents were split in their agreement for the proposed service delivery locations in Selly Oak – 41.9% of respondents were in agreement and equally 41.9% of respondents did not agree with the proposal. 11.8% of respondents neither agreed nor disagreed with the proposal in the area. As such a majority agreement was not received on this proposal.

In line with these findings, it is recommended that the delivery locations are reviewed to take account of views expressed in consultation.

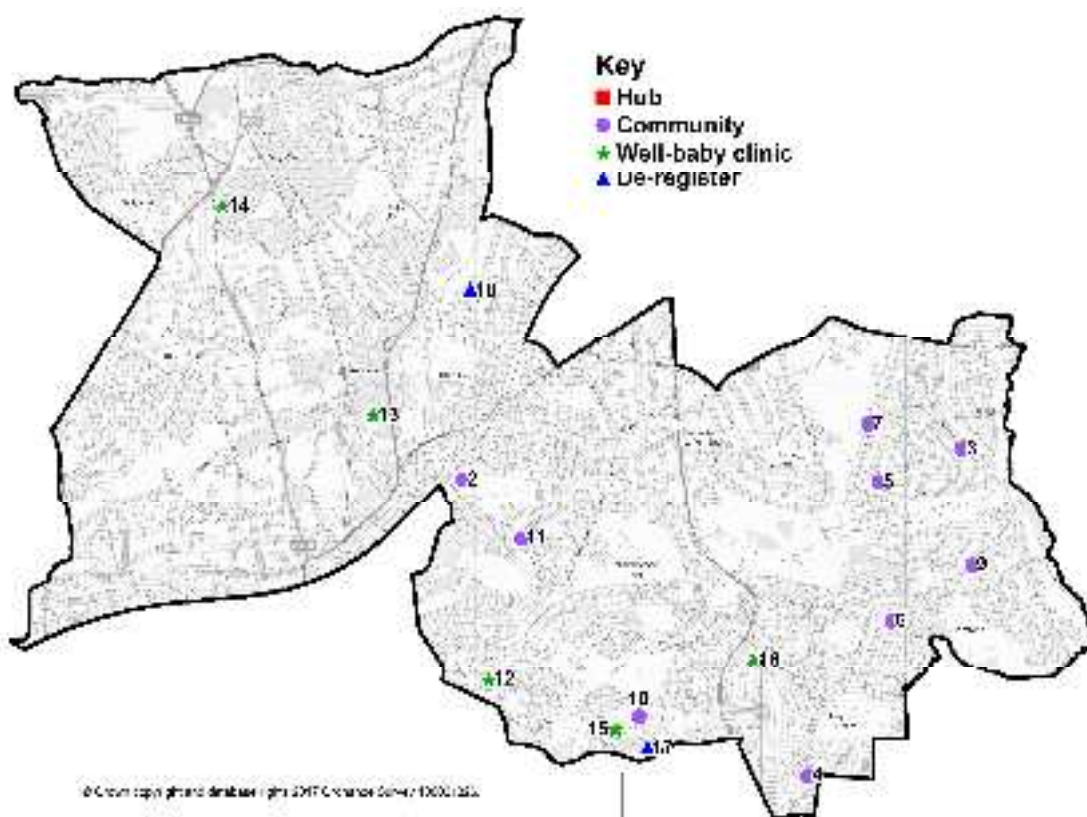
- **Agreement that the proposed locations will enable access to required services within the district**

Overall respondents were in agreement that the proposed service delivery locations in Selly Oak would enable them to access the services that they need (45.2%), with 18.3% of respondents strongly agreeing and 26.9% somewhat agreeing.

In line with these findings, it is recommended that the proposed delivery locations are accepted as accessible options for the provision of services in Selly Oak District.

Revised Proposal following consultation

Taking account of a combined view of the needs of the area and views expressed by through the consultation, the following is the proposed operating model for the Selly Oak district:



Please note that the references refer back to the public consultation document.

Map Ref	Venue	Road	Service Type
1	Chinnbrook Children's Centre	Trittiford Rd	Hub
2	Allens Croft Children's Centre	Allens Croft Road	Community Location
3	Billesley School	Trittiford Road	Community Location
4	Immanuel Church Hall	Pickenham Road	Community Location
5	Holy Cross Community Centre	Beauchamp Road	Community Location
6	Warstock Community Centre	Daisy Farn Road	Community Location
7	The Ark	Yardley Wood Road	Community Location
8	Maypole Methodist Church	Sladepool Farm Road	Community Location
9	Yardley Wood School	School Road	Community Location
10	Manningford Hall	Manningford Road	Community Location
11	St Bede's church	Bryndale Ave	Community Location
12	Broadmeadow Health Centre	Keynell Covert	Well-baby clinic
13	Charlotte Road Health Centre	Charlotte Road	Well-baby clinic
14	Selly Oak Health Centre	Katie Road	Well-baby clinic

15	Druids Heath Surgery	Pound Road	Well-baby clinic
16	Maypole Health Centre	Sladepool Farm Road	Well-baby clinic
17	Maypole Children's Centre	Grendon Road	De-register
18	Reameadow Children's Centre	River Brook Drive	De-register

1. Approve the revised service delivery model for the Selly Oak district for implementation
 - a. One hub location within the Billesley ward (currently Chinnbrook Children's Centres)
 - b. Ten community locations
 - c. Five well-baby clinics
2. Approve the de-registration of the following children's centres, this will mean that children centre services will no longer be provided from these locations
 - a. Maypole Children's Centre
 - b. Reameadow Children's Centre
3. Approve the de-registration of Allens Croft Children's Centre, services will be offered from this location but not the full children's centre service offer.

10.9 Sutton Coldfield

Children's Needs

Within the Sutton Coldfield district 6% of the population are under 5 years old.

The rate of children achieving good at Early Years Foundation Stage assessments in Sutton Coldfield district are above the city rate, with all wards having a higher rate than the city, led by Sutton Four Oaks ward.

However, there are still 267 children who have not achieved good at EYFS across the district, with Sutton Trinity ward containing the most with 85 children.

Recommendations from the consultation findings

- **Agreement with the proposed service delivery locations within the district**

Overall 30.9% of respondents agreed with the proposed service delivery locations in Sutton Coldfield, with 16.7% strongly agreeing and 14.2% somewhat agreeing.

A majority agreement with the proposed service delivery locations was not received for this District.

In line with these findings, it is recommended that the delivery locations are reviewed to take account of views expressed in consultation.

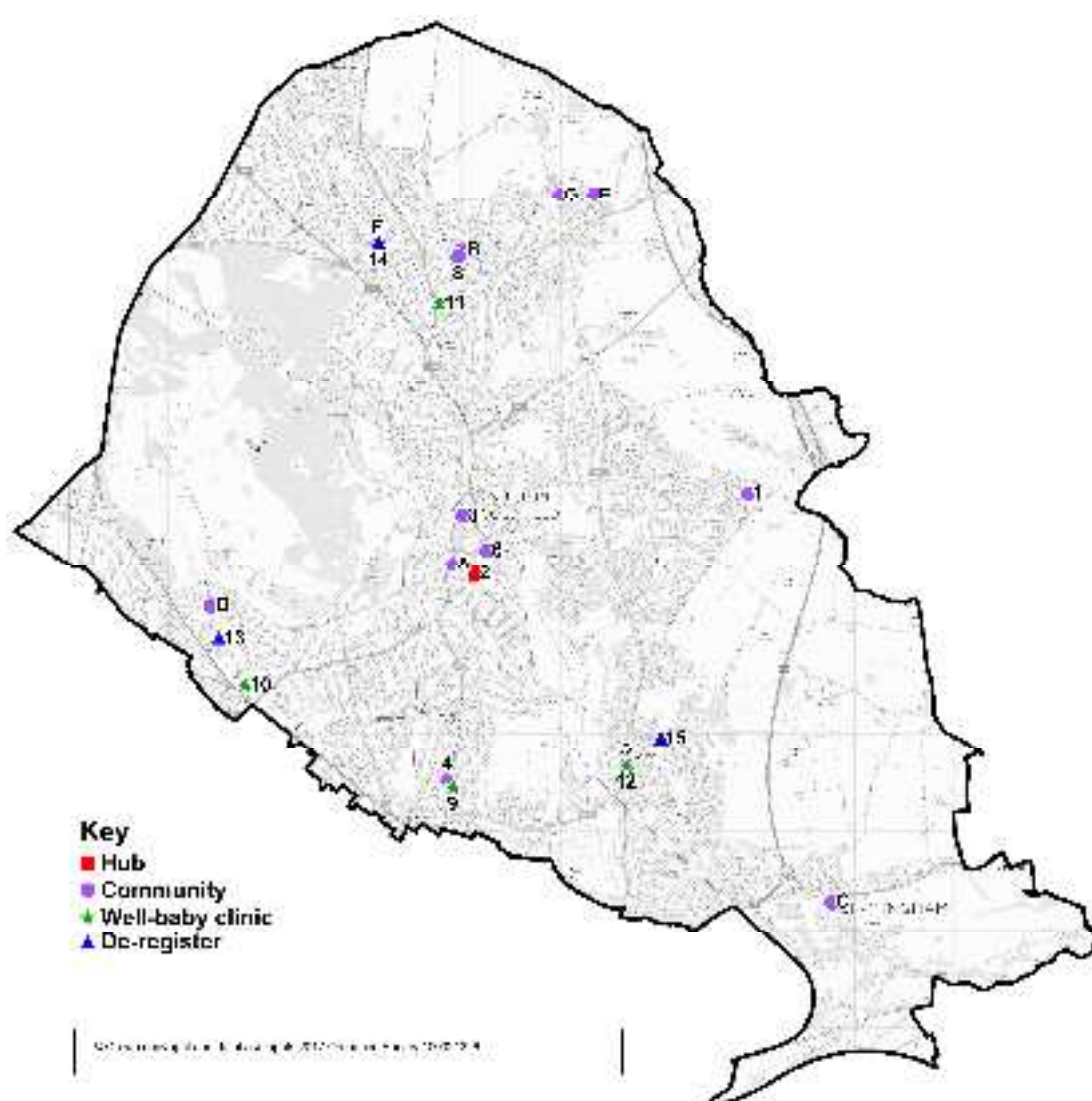
- **Agreement that the proposed locations will enable access to required services within the district**

Overall 38.1% of respondents agreed that the proposed service delivery locations in Sutton Coldfield would enable them to access the services that they require, with 18.2% strongly agreeing and 19.8% somewhat agreeing. A majority agreement was not received for this proposal in this District.

In line with these findings, it is recommended that the delivery locations are reviewed to take account of views expressed in consultation.

Revised Proposal following consultation

Taking account of a combined view of the needs of the area and views expressed by through the consultation, the following is the proposed operating model for the Sutton Coldfield district:



Please note that the references refer back to the public consultation document.

Map Ref	Venue	Road	Service Type
---------	-------	------	--------------

A	The Hub	Farthing Lane	Community Location
B	St James Church Hall	Mere Green Road	Community Location
C	Minworth Primary School	Water Orton Lane	Community Location
D	New Oscott Primary School	Markham Road	Community Location
E	Boldmere Library	Boldmere Road	Community Location
F	Arthur Terry School	Kittoe Road	Community Location
G	Harvest Fields Centre	Harvest Fields Way	Community Location
1	New Hall Children's Centre	Langley Hall Drive	Community Location
2	Holland House Children's Centre	Holland Road	Hub
3	Sutton Coldfield United Reform Church	Brassington Avenue	Community Location
4	Emmanuel Church	Little Green Lane	Community Location
5	St Johns Church	Walmley Road	Community Location
6	South Parade Methodist Church	South Parade	Community Location
7	Streetly Methodist Church	Thornhill Road	Remove from the model
8	Mere Green Community Centre	Mere Green Road	Community Location
9	Hawthorns Surgery	Birmingham Road	Well-baby clinic
10	Jockey Rd Medical Centre	Jockey Road	Well-baby clinic
11	Ley Hill Surgery	Lichfield Road	Well-baby clinic
12	Walmley Health Centre	Walmley Road	Well-baby clinic
13	Bush Babies Children's Centre	Tudor Close	De-register
14	Four Oaks Children's Centre	Kittoe Road	De-register
15	The Deanery Children's Centre	Fox Hollies Road	De-register

1. Approve the revised service delivery model for the Sutton Coldfield district for implementation
 - a. One hub location within the Sutton Trinity ward (currently Holland House Children's Centres)

- b. Thirteen community locations
 - c. Four well-baby clinics
- 2. Approve the de-registration of the following children's centres, this will mean that children centre services will no longer be provided from these locations.
 - a. Bush Babies Children's Centre
 - b. Four Oaks Children's Centre
 - c. The Deanery Children's Centre
- 3. Approve the change in main Hub delivery location from New Hall Children's Centre to Holland House Children's Centre. Additional consultation will be required about the de-registration and reduction of children's centre services from New Hall Children's Centre.
- 4. Approve the removal of Streetley Methodist Church as a community delivery location from the model.

10.10 Yardley

Children's Needs

Within the Yardley district 5% of the population are under 5 years old which equates to approximately 9148 children of these 3812 children are within the 0-10% Index of Multiple Deprivation (IMD) ward. There is also a high referral rate to BCC run services for disabled children than would have been expected in 2012/13 and 2013/14 – 10% of the referrals (2013/14) from within this district.

The rate of children achieving good at Early Years Foundation Stage (EYFS) assessments in Yardley district are above the city average (63.7%), with all wards having a higher rate than the city, led by Sheldon ward. However, there are still 598 children who have not achieved good at EYFS across the district, with South Yardley ward containing over 200 children and Acocks Green over 150.

Recommendations from the consultation findings

- **Agreement with the proposed service delivery locations within the district**

Overall 34.4% of respondents agreed with the proposed service delivery locations in Yardley District, with 15.4% of respondents strongly agreeing with the proposal and 19.0% somewhat agreeing.

There was not a majority agreement to this proposal in Yardley District.

In line with these findings, it is recommended that the delivery locations are reviewed to take account of views expressed in consultation.

- **Agreement that the proposed locations will enable access to required services within the district**

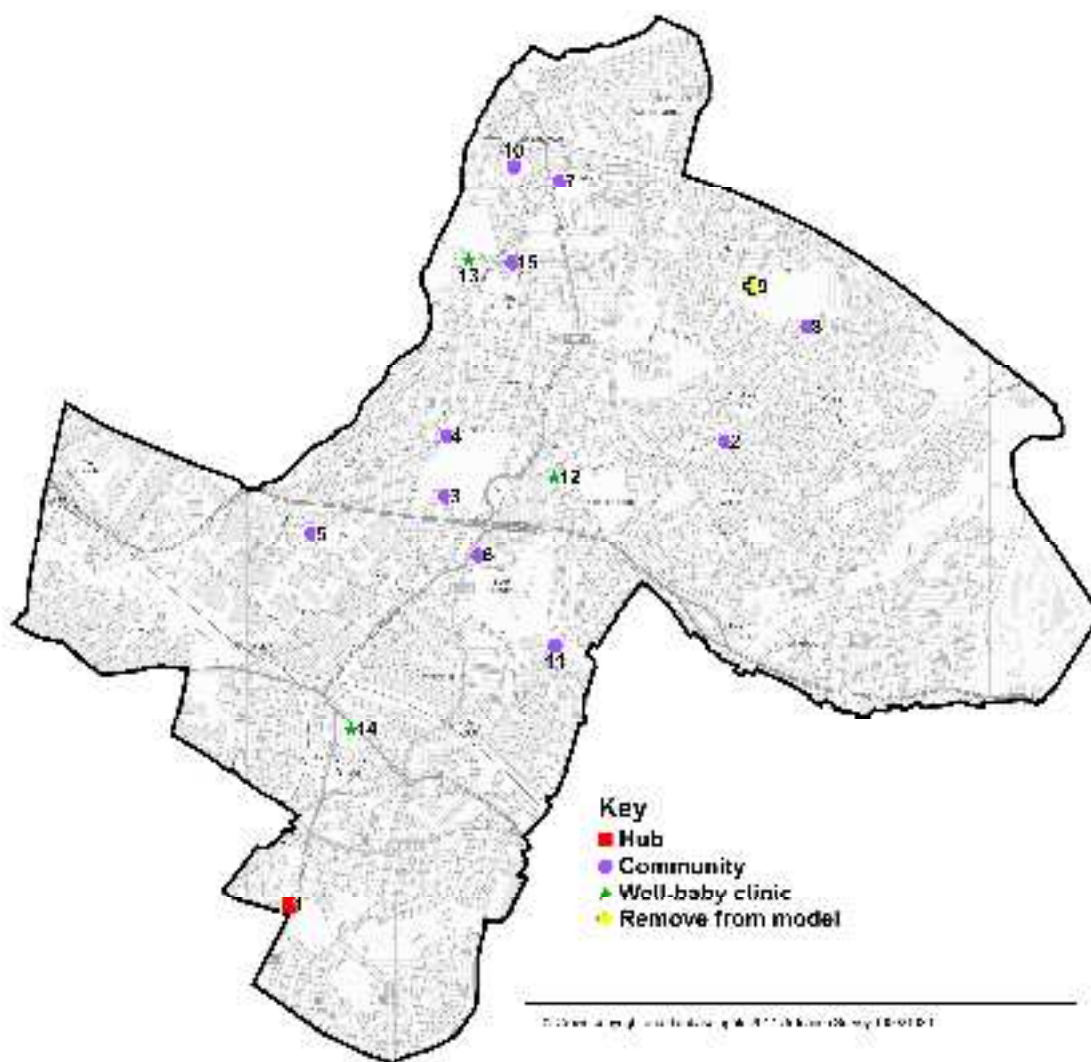
Overall 39.8% of respondents agreed that the proposed delivery locations would enable them to access the services they require in Yardley District, with 20.8% of respondents strongly agreeing and 19.0% of respondents somewhat agreeing.

There was not a majority agreement to this proposal in Yardley District.

In line with these findings, it is recommended that the delivery locations are reviewed to take account of views expressed in consultation.

Revised Proposal following consultation

Taking account of a combined view of the needs of the area and views expressed by through the consultation, the following is the proposed operating model for the Yardley district:



Please note that the references refer back to the public consultation document.

Map Ref	Venue	Road	Service Type
1	Fox Hollies Children's Centre	Fox Hollies Road	Hub
2	Garretts Green Children's Centre	Garretts Green Lane	Community Location
3	Oaklands Park Children's Centre	Boughton Road	Community Location

4	Oasis Academy/Hobmoor Primary School	Wash Lane	Community Location
5	Redhill Primary School	Redhill Road	Community Location
6	South Yardley Library	Yardley Road	Community Location
7	Stechford Cascades & leisure centre	Station Road	Community Location
8	Blakenhale Infants School	Blackenhale Road	Community Location
9	Meadway Community Centre	Meadway	Remove from model
10	Stechford Baptist Church	Victoria Road	Community Location
11	Gilberstone Primary School	Clay Lane	Community Location
12	Harvey Road Health Centre	Harvey Road	Well-baby clinic
13	Richmond Primary Care Centre	Richmond Road	Well-baby clinic
14	Acocks Green Medical Centre	Warwick Road	Well-baby clinic
15	Bordesley Green East Children's Centre	Bordesley Green East	Community Location

1. Approve the revised service delivery model for the Yardley district for implementation
 - a. One hub location within the Acocks Green ward (currently Fox Hollies Children's Centres)
 - b. Ten community locations
 - c. Three well-baby clinics
2. Approve the change for Bordesley Green East Children's Centre from a removal of children's centre services to a de-registration with community delivery on a sessional delivery.
3. Approve the de-registration of Garretts Green and Oaklands Park Children's Centre, services will be offered from this location but not the full children's centre service offer.
4. Approve the removal of Meadway Community Centre as a potential delivery location as this building now has a compulsory purchase order in place.

11. Transition to the new model

We acknowledge that the scale of change recommended is significant and considerable work will need to be undertaken to ensure that children and families currently using services are transitioned well. Following the approval of the recommendations a new phase of communications will be triggered within which local parents will be informed of what the changes mean to them.

As we commence working within local communities we anticipate the level of community based provision expanding as targeted groups are developed to meets the needs of local children and families.