

<b>Report of:</b>	<b>Cabinet Member for Children, Families and Schools</b>
<b>To:</b>	<b>Schools, Children and Families Overview and Scrutiny Committee</b>
<b>Date:</b>	<b>12<sup>th</sup> October 2016</b>

## **Progress Report on Implementation: We Need to Get It Right: A Health Check into the Council's Role in Tackling Child Sexual Exploitation**

### **Review Information**

Date approved at City Council:	2 December 2014
Member who led the original Inquiry	Cllr Anita Ward
Lead Officer for the Inquiry	Benita Wishart
Date progress last tracked:	20 <sup>th</sup> April 2016

1. In approving this Inquiry the City Council asked me, as the appropriate Cabinet Member for Children's Services, to report on progress towards these recommendations to this Overview and Scrutiny Committee.
2. Details of progress with the outstanding recommendations are shown in Appendix 2.
3. Members are asked to consider progress against the recommendations and give their view as to how progress is categorised for each.

### **4. Introduction**

Work continues by Birmingham City Council and its partners to raise awareness about, prevent, disrupt and prosecute the terrible crime of child sexual exploitation in the city since the ground-breaking overview and scrutiny report two years ago.

This work has been developed within the new West Midlands CSE framework but has been adapted to fit with the context and complexity of Birmingham. We have a CSE operational group chaired by West Midlands Police to share intelligence about victims and perpetrators, possible locations and patterns which might indicate groups of offending. For individual young people who might be at risk of sexual exploitation we have an agreed risk assessment tool and where young people are considered at risk they are subject to an assessment leading to a plan of support as appropriate. Support can be provided from a highly regarded Barnardo's voluntary sector project, through the Council's own family support service or through a child in need/child protection/child in care plan as relevant for each individual young person.

There are three CSE co-ordinators in post and a range of commissioned services to support young people and prevent CSE. CSE co-ordinators are co-located with Police and Health in MASH at Lancaster Circus. Each co-ordinator links to one of our three Children's Services areas: South; East; and North West & Central.

## **5. Commissioning**

The following services are currently commissioned:-

1. Barnardo's SPACE – working directly with children who have been, or are at risk of sexual exploitation, to develop strategies that will enable them to be effectively safeguarded and to develop coping strategies.
2. The Children's Society Streetwise – conducting return interviews with children missing from care or home to identify the push/pull factors and to develop strategies for keeping them safe. They also provide intensive support for high risk children.
3. KIKIT – working to engage young men aged 15-24 years old from the Asian community to improve behaviours and attitudes as part of the overarching agendas on tackling CSE, sexual health, substance misuse and violence against women.
4. Barnardo's Amazon – individual counselling and support services to children who have been sexually abused, and to their families, where appropriate.
5. RSVP (Rape and Sexual Violence Project) - individual counselling for children who have experienced sexual violence, abuse or exploitation.

All of these services are commissioned up to March 2018 (February 2018 for KIKIT).

Looking forward, an opportunity exists to restructure these commissions to create an integrated service model which will achieve outcomes for children and families and will work to embed ambition for young people and their families including educational attainment, stability and resilience. It is proposed that this integrated service operates at two levels as detailed below to reflect the Right Services Right Time framework.

- Early help for children, young people and families who are starting to struggle as a consequence of risk factors (Adverse Childhood Experiences)
- Targeted therapeutic support for children and families affected by exploitation.

The intention is that the commissioned service operates at the additional needs level and is developed to create a system approach taking account of both the universal service offer and the more specialist services provided by BCC Children's Social Care and Family Support services.

The new service model will be designed with reference to other commissioning activity to ensure synergy with services like Forward Thinking Birmingham.

## **6. Activity and Trends**

Please see attached CSE data analysis report. In summary:

- Overall numbers of CSE have been generally increasing - October 2015 to September 2016, although the seriousness of the risk has generally decreased. The number of children classified as at risk has continued to rise while the

numbers of those at significant or serious risk rose initially, but has since tended towards decreasing.

- There has been no significant change in the distribution between children in care, children in need or child protection the 12 month period. Overall, children in care is the most significant population of those at risk or suffering CSE. For some of these young people CSE is the reason they are in care.
- The ethnic group at most significant risk at those identifying as White – UK, which is to be expected considering the ethnic make-up of the Birmingham. However, those identifying as of Mixed Parentage (especially White/Asian, and White/Black Caribbean) have increased in number.

## **7. Tackling Offenders**

- West Midlands Police (WMP) are currently aware of 436 suspected CSE offenders across the WMP area, of whom 23 were newly identified in last quarter.
- There are challenges around the reporting of suspected offenders, who may be recorded for crimes that have no direct reference to CSE, although are part of wider disruptive and pursuit activity in relation to CSE investigations. As we improve identification of victims we expect to see improvement in our identification and pursuit of offenders. There are currently 59 complex investigations on-going.
- Across the West Midlands metropolitan area over the last 3 months a variety of 'pursue' methods have been utilised to tackle the offenders of CSE. In relation to prosecution, 12 charges have been achieved, 4 arrests have been made and 1 case is currently awaiting CPS decision. There have been two Sexual Risk Orders achieved which are the most commonly used Civil option and 15 Child Abduction Warning Notices have been served, these are vital disruption tactics and form part of the wider evidence base against a perpetrator. 3 child disruption notices have been served.
- A joint WMP/British Transport Police operation was carried out at New St Station in September to locate vulnerable children and disrupt offenders.
- In Birmingham since new legislation in March 2015, WMP have obtained six interim Sexual Risk Orders (SRO) and one full 10-year SRO to protect Birmingham children. Our legal services are looking to issue another three. SROs are a simpler way to prevent perpetrators continuing to exploit children, than the injunctions pioneered by Birmingham in 2014.

## **8. Awareness Raising**

Since April 2016 the Regional CSE Communication Group have undertaken the following activity:

- Social media drives (via Twitter and Facebook) to raise awareness of CSE
- Shared two news releases for topic of the month:
  - Lighter Nights – publication May 2016

- CSE Happens to Boys – publication July 2016
- Refreshed the See Me, Hear Me website <http://www.seeme-hearme.org.uk>)
- Launched a digital campaign '*Do you know what your friend is doing*'. This has included;
  - Production of a YouTube video,
  - Motorway advertising (M6 digital tower both north and southbound at M5 junction),
  - Designed posters for publication in washrooms at New Street Station,
  - Held an interview by Nick Page, Chief Executive, Solihull Council with Big Centre TV. To watch this interview copy the following link into your internet explorer browser.  
<https://www.youtube.com/watch?v=UpQMrrg4IRg>
  - Shared a news release highlighting the increase in hits to the website as a result of the launch of the digital campaign – publication August 2016
  - Worked on the production of a leaflet for licenced premises and the development of a toolkit for communication leads. These will be shared with LA's from September onwards.

## **Birmingham:**

- Birmingham City Council supported the National CSE Awareness Day on the 18<sup>th</sup> March 2016

By highlighting the campaign in the Birmingham Newsroom and supporting through social media, particularly arranging for BCC's Leadership Team to promote it via photos on Twitter. Corporate Communications have continued to publish and promote news releases and other media activity in relation to CSE in Birmingham.

- On the 30<sup>th</sup> June 2016 Birmingham hosted a National Conference 'Tackling CSE' facilitated by Mark Rogers, Chief Executive. The conference shared national best practice and the experiences of Oxford, Rotherham, Bristol and Rochdale in tackling CSE.
- BSCB have developed a page on its website signposting children, young people, parents and carers to the information and resources on the See Me, Hear Me website (<http://www.lscbbirmingham.org.uk/index.php/child-sexual-exploitation>)
- In August the BSCB promoted via its twitter feed and through its key partner agencies the

*See Me, Hear Me* digital campaign '*Do you know what your friend is doing*' which is targeted at young people.

- BSCB has secured advertising space with Birmingham Football Association who are developing an A4 Young People's information folder which will be distributed to young people through secondary schools, colleges and youth centres via FA Soccer Coaches and also through football grounds and club shops on match days from mid-August onwards for 12 months.
- The LA Designated Officer (LADO) service which has a role in preventing and investigating abuse in settings, has worked closely with charities such as: AFRUCA – UK, CCPAS, Faith Associates, Faith Action, National Resource Centre for

Supplementary Education (NRCSE), members of the Birmingham Supplementary Schools Consortium, and the Birmingham Faith Network.

- This work has been about raising awareness of the full range of child protection and the Responsibility of keeping all children safe. It has covered CSE as well as issues such as FGM, Forced Marriage and Radicalisation.
- Our training has involved 36 Black African Faith Leaders and 130 multi-faith leaders and volunteers, culminating in a faith leaders' summit in June 2016. More recently the Sikh community has approached us to deliver a training programme at a Conference that they are hosting at the end of this month.

## Appendices

<b>1</b>	<b>Scrutiny Office guidance on the tracking process</b>
<b>2</b>	<b>Recommendations you are tracking today</b>
<b>3</b>	<b>Recommendations tracked previously and concluded</b>

## For more information about this report, please contact

Contact Officer:	Alastair Gibbons
Title:	Executive Director for Children's Services
Telephone:	0121 675 7743
E-Mail:	<a href="mailto:Alastair.gibbons@birmingham.gov.uk">Alastair.gibbons@birmingham.gov.uk</a>

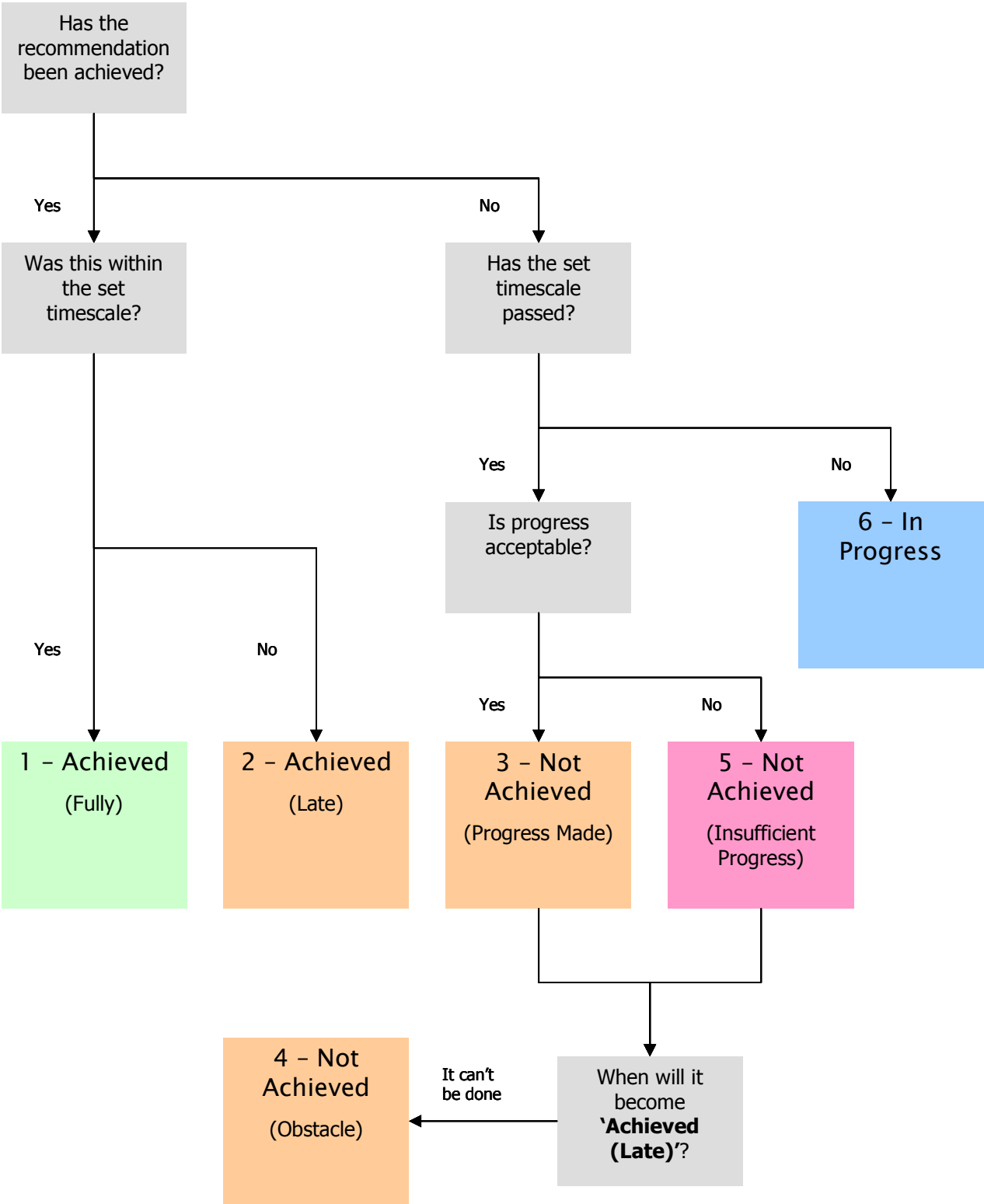
## Appendix 1: The Tracking Process

In making its assessment, the Committee may wish to consider:

- What progress/ key actions have been made against each recommendation?
- Are these actions pertinent to the measures required in the recommendation?
- Have the actions been undertaken within the time scale allocated?
- Are there any matters in the recommendation where progress is outstanding?
- Is the Committee satisfied that sufficient progress has been made and that the recommendation has been achieved?

Category	Criteria
<b>1: Achieved (Fully)</b>	The evidence provided shows that the recommendation has been fully implemented within the timescale specified.
<b>2: Achieved (Late)</b>	The evidence provided shows that the recommendation has been fully implemented but not within the timescale specified.
<b>3: Not Achieved (Progress Made)</b>	The evidence provided shows that the recommendation has not been fully achieved, but there has been significant progress made towards full achievement. <b>An anticipated date by which the recommendation is expected to become achieved must be advised.</b>
<b>4: Not Achieved (Obstacle)</b>	The evidence provided shows that the recommendation has not been fully achieved, but all possible action has been taken. Outstanding actions are prevented by obstacles beyond the control of the Council (such as passage of enabling legislation).
<b>5: Not Achieved (Insufficient Progress)</b>	The evidence provided shows that the recommendation has not been fully achieved and there has been insufficient progress made towards full achievement. <b>An anticipated date by which the recommendation is expected to become achieved must be advised.</b>
<b>6: In Progress</b>	It is not appropriate to monitor achievement of the recommendation at this time because the timescale specified has not yet expired.

The Tracking Process



## Appendix ②: Progress with Recommendations

A	Delivery of training and awareness raising on Child Sexual Exploitation			
No.	Recommendation	Responsibility	Original Date For Completion	Cabinet Member's Assessment
R06	That business forums and networks are identified to work with to ensure broader understanding of CSE and to support the roll out of the "Say Something if You See Something" campaign and guidelines with particular focus on the hospitality industry and taxis in order to increase awareness and reporting.	Cabinet Member for Children's Services  Chair BSCB	July 2015	2. Achieved – (late)
Evidence of Progress (and Anticipated Completion Date if 'Not Achieved')				
<p>See Me Hear Me postcards have been distributed to each Hackney carriage and Private Hire Driver and to Private Hire Operators. An article concerning CSE was included in the latest newsletter which was sent to all of the aforementioned licence holders. The article included information about the website. A copy was shared with the Committee in November 2015. Training is being arranged with taxi drivers to spot signs of possible CSE in relation to both victims and perpetrators. The Council has committed to supporting Barnardo's with their nightwatch campaign.</p> <p><u>Further information following the 25 November 2015 meeting</u></p> <p>The awareness raising plan will include coverage of the matters in this recommendation.</p> <p><u>Further information following the 10 February 2016 meeting</u></p> <p>Information about CSE, awareness raising, signs and how to report them, is being sent out to all 3000 licensed premises in the City.</p> <p><b>12<sup>th</sup> October 2016</b></p> <p>The attached letter is being sent to all licensed premises and mirrors the See-Something Say-Something campaign messages. Premises will also be receiving the regional campaign leaflet which has more detail on how licence holders can help to prevent CSE. This letter will have been delivered to all licensed premises within the City by the end of October (it is currently with the printing team).</p> <p>To change a Responsible Authority within our Policy requires the amendment to be agreed by City Council. As there were multiple other matters progressing which also required an amendment to the Policy, the amendment was deferred to be submitted as one report. Regrettably, the other matters were delayed but it is hoped the amendment will take place at the earliest opportunity. Officers from the licensing Service have taken advantage of this hiatus to ensure that those staff who will be responsible for responding to these matters have been briefed on their remit.</p> <p>New Licence applications will now be screened for any children's safeguarding concerns by an officer in the Child Protection Unit, who reports to the new Assistant Director Child Protection</p>				

Performance and Partnership who also has the strategic lead for Child Sexual Exploitation across Children's Services.

Since the last Overview and Scrutiny Committee Emma Rohomon has continued to attend the CSE Operations Group (COG) meetings representing not only Licensing, but colleagues within the wider Place Directorate. She is now Vice Chair of the COG. She also attends the Missing Group (MOG) meetings in order to assist with any location based issues which may arise.

We have offered the Children's Society training for those staff who conduct return home interviews for missing children in order to help them detect any issues/patterns with locations or transportation during those missing episodes.

A new Code of Conduct for Members and Officers of the Licensing and Public Protection Committee was agreed at September's LPPC meeting along with recommendations to amend the Code of Conduct for all Members within the BCC Constitution in direct response to the review carried out by Licensing following the Rotherham review.

## Appendix ③: Concluded Recommendations

**These recommendations have been tracked previously and concluded.**  
**They are presented here for information only.**

**concluded**

No.	Recommendation	Responsibility	Date Concluded by Overview and Scrutiny Committee	Tracking Assessment
R01	<p>That:</p> <ul style="list-style-type: none"> <li>a) The “see me hear me” web site<sup>1</sup> be further developed and a concerted awareness and empowerment campaign for action is delivered for the public (communities, families and children);</li> <li>b) The City Council and partners work with and build the capacity of a broad range of the city’s communities to encourage identification and reporting of CSE;</li> <li>c) Resources and sign-posting to online awareness for parents are promoted<sup>2</sup>;</li> <li>d) Awareness includes online risks of grooming, the role of the Child Exploitation and the Child OnLine Protection Centre (CEOP)<sup>3</sup> and how to locate and use the report abuse button.</li> <li>e) The Cabinet Member Children Services explores how this can be delivered and funded jointly with partners</li> </ul>	Cabinet Member for Children Services	10 Feb 2016	2 – Achieved (Late). Work will be ongoing.

### Evidence of Progress (and Anticipated Completion Date if ‘Not Achieved’)

The website ‘See Me Hear Me’ is hosted by Dudley Council as part of a West Midlands regional framework, e.g. there is now a West Midlands regional CSE co-ordinator in post. Dudley have confirmed that the website was reviewed and updated in June/July 2015 as part of the relaunch of the framework. The website has information for parents, young people and other organisations including a report it button.

<http://www.seeme-hearme.org.uk/>

The site now contains bespoke topical themes and areas and includes new channels to communicate key messages. These new channels include a video with a short pause to answer a specific question on that piece of video footage.

The link to the website has been shared with all Directorate for People staff as a reminder and it already features on birmingham.gov.

<sup>1</sup> [www.seeme-hearme.org.uk/](http://www.seeme-hearme.org.uk/)

<sup>2</sup> [www.paceuk.info/support-for-parents/](http://www.paceuk.info/support-for-parents/)

<sup>3</sup> CEOP is a National Crime Agency Command at [ceop.police.uk/](http://ceop.police.uk/)

A film called BAIT has been made with young people in Birmingham and distributed to all secondary schools with a resource pack to use with teenagers as part of structured PHSE programme. Place Directorate contributes to raising awareness of CSE to parents and communities. Four specialist Think Family Workers within Housing Services have been trained to deliver CSE awareness briefings to community groups, parents and schools.

Further information following the 25 November 2015 meeting

The BAIT resource pack has been distributed to all Secondary Schools and FE Colleges in Birmingham. The programme has also been shared with LSCBs across the region. During the Summer 2015 briefings were held for Headteachers. Designated Safeguarding Leads (DSLs) and School Governors across the city to promote use of the BAIT resource. The resource pack incorporates evaluation tools to capture feedback from teachers and most importantly the views of students who have completed the learning module. At the end of the academic year the BSCB will complete an evaluation of the BAIT programme to assess the impact on young people's attitudes and behaviour towards CSE. The finding will be disseminated to Headteachers and School Governors in due course.

The BSCB Strategic CSE Sub-Group have commissioned a tiered approach to the delivery of CSE training in Birmingham:

1. At an entry level – all practitioners complete an introduction to CSE via e-learning provided before completing face to face sessions.
2. CSE Safeguarding Children Sexual Exploitation course that builds on the e-learning introduction to CSE and delivered face to face.
3. Specialist training – developing skills for practice, targeted at practitioners who are required to attend COG, MOG and MASE meetings.
4. Regional Investigative training is being developed targeted at practitioners who are involved in joint investigations of CSE i.e. Police Officers, Social Workers and Paediatricians.

In 2014/15 the BSCB provided specialist multi-agency CSE training for 296 professionals. In 2015/16 fifteen courses were commissioned, training 50 professionals. This will be increased to 540 training places in 2016/17.

There has been a recent awareness and training programme for taxi drivers that achieved good publicity.

We have not yet developed awareness-raising in other areas, such as hotels, but this is part of the BSCB programme for 2016/17. Raising awareness is a continual process. This is jointly funded work with partners.

MASH no longer have an active twitter account as this is not a good way to receive confidential information. The Council uses blogs and other means through the press office to convey public messages.

No.	Recommendation	Responsibility	Date Concluded by Overview and Scrutiny Committee	Tracking Assessment
R02	That the Cabinet Member and BSCB encourage schools to ensure that: a) CSE is integrated into Personal, Social, Health and Economic Education (PSHE) from year 6 upwards into ALL schools in the city and to encourage best practice in understanding and dealing with CSE in schools;	Cabinet Member for Children Services	10 Feb 2016	2- Achieved (Late)

	<ul style="list-style-type: none"> <li>b) Healthy relationships and girl's empowerment (e.g. by using the "free being me" resources Girl Guiding campaign) is integrated into PSHE teaching in all years;</li> <li>c) All teaching includes appropriate provision for boys;</li> <li>d) All schools promote safety online including smartphone tracking; and</li> <li>e) All school Head Teachers and recognised Designated Safeguarding Leads (DSL) are written to, raising the issue, asking for a collaborative approach in tackling CSE and for key staff to attend training; and they adapt and agree the new model safeguarding policy from the BSCB.</li> </ul>			
<b>Evidence of Progress (and Anticipated Completion Date if 'Not Achieved')</b>				
<p>Each school in Birmingham is required to complete the section 175 school safeguarding audit released by the BSCB. The 2014/15 audit report specifically asked schools what training the Safeguarding Lead had received in CSE, what training is delivered to the school staff, if the school safeguarding policy covered CSE as a topic and if CSE was included in the curriculum. Analysis of the audit identified that only 3% of responders across the city had not received CSE training in some shape, and it was covered in degrees within the curriculum.</p> <p>CSE is included in the model safeguarding policy offered to schools as a template for their use. 82% of schools reported recently using this model. In the rollout of Right Service Right Time to schools which reached 78.6% of schools across the city CSE was presented as a case study to identify the thresholds issue and services available to support vulnerable children, and CSE has been included in the training received by schools on the multi-agency fCAF training for the past 3 years.</p> <p>The model safeguarding policy was reviewed and updated in November 2015 and is available to schools to download.</p> <p>CSE has a key topic delivered on 4, 12 and 17 November 2015 at the Schools Area Safeguarding Conferences. Within this presentation the issue of CSE integration into the PSHE curriculum of health relationships and empowerment is being covered.</p> <p>The October District Safeguarding Networks (DSN) held for designated safeguarding leads within schools covered the topic of sexting (as only 10% of schools reported they had had training on this topic) and as part of the presentation the grooming of a teenage boy was used as an illustration to show that CSE is a cross-gender issue.</p> <p>E-safety was discussed at the June DSN meetings and the school based tracking system Policy Central and Policy Central Monitor were discussed. This system allows schools to monitor IT use across the school and notifies through a 'screen shot' where an issue of concern is identified; words associated with exploitative practice form part of the trigger response. Work is still required to support Policy Central's roll out across the city and, with schools which elect not to buy the system, around the need to address school responsibilities around monitoring IT usage. To date no work has been undertaken promoting smart phone tracking with school pupils.</p> <p><u>Further information following the 25 November 2015 meeting</u> The Chair and Deputy Chair of the Committee have written a piece for the School Noticeboard on raising awareness and encouraging schools to engage in CSE tracking.</p>				

No.	Recommendation	Responsibility	Date Concluded by Overview and Scrutiny Committee	Tracking Assessment
R03	That Governor Support Team reviews safeguarding training provided in the light of this report. <sup>4</sup>	Cabinet Member for Children Services	10 Feb 2016	2 – Achieved (Late)
<b>Evidence of Progress (and Anticipated Completion Date if 'Not Achieved')</b>				
<p>School and Governor Support (S&amp;GS) commissions Services for Education (S4E) as subject experts to deliver the majority of the safeguarding training that is available to governors through the Governor Training Programme.</p> <p>S&amp;GS consulted with S4E over the recommendations of the scrutiny report and agreed changes required to the content and key messages given in governor training in order to reflect the Council's role in tackling CSE (and also covering FGM, domestic abuse and the Prevent duty).</p> <p>CSE is also planned as a topic item in the spring term agenda briefing sent to Chairs of Governors, Head Teachers and Clerks of Governing Bodies to ensure that the issue is raised at governing body level. This briefing was sent out in early November 2015, in advance, to help schools plan their spring and/or summer term agendas.</p> <p>(Members have since been emailed the termly agenda).</p>				

No.	Recommendation	Responsibility	Original Date For Completion	Cabinet Member's Assessment
R04	<p>That:</p> <p>a) All frontline staff and managers of caseloads in Children's Social Care including agency staff attend training on CSE. This should include definitions, the grooming line, symptoms and action including what can be done to disrupt / bring charges against and prosecute perpetrators. Particular barriers to disclosure of CSE by black and minority victims should be included in this.</p> <p>b) There is mandatory training on missing children and the escalation system.</p>	Cabinet Member for Children Services	July 2015	2 – Achieved (Late)
<b>Evidence of Progress (and Anticipated Completion Date if 'Not Achieved')</b>				
<p>Training delivered by Children's Learning &amp; Development Team.</p> <p>A specific CSE one day programme has been delivered over the last year, covering the above criteria to frontline Children's Social Care (CSC) staff. Staff have also participated in multi-agency Safeguarding Children Board CSE training.</p> <p>CSE is included in all safeguarding programmes at a high level. The programmes include Child Protection, Safeguarding and Child Protection Decision Making.</p> <p>We are currently developing a missing children programme to be delivered from April 2016.</p>				

<sup>4</sup> [www.rotherham.gov.uk/downloads/file/1407/independent\\_inquiry\\_cse\\_in\\_rotherham](http://www.rotherham.gov.uk/downloads/file/1407/independent_inquiry_cse_in_rotherham)

Also training has been made available to CSC staff via online training and via the BSCB which commissioned Barnardo's to deliver that training. BSCB training around CSE remains a priority in 2016/17 with 18 courses scheduled, delivering 540 training places. Training for staff and partners is iterative and on-going.

New CSE guidance has been issued to all children's social care staff from February 2016. This will be followed up with Area briefings.

Staff who are working with children and young people in the Place Directorate access CSE training through the BSCB website.

Further information following the 10 February 2016 meeting

New CSE and Missing practice guidance is in place and has been shared with staff. We have a Head of Service CSE lead. We are confident that staff have access to training as well as briefings through the line management structure in each area.

No.	Recommendation	Responsibility	Original Date For Completion	Cabinet Member's Assessment
R05	That: a) BSCB continues to provide and promote training to its partners including health organisations in the city, the West Midlands Fire Service and West Midlands Police; b) Partner organisations include CSE training within Level 1 and Level 2 safeguarding training.	Chair Birmingham Safeguarding Children Board	July 2015	2 – Achieved (Late)

**Evidence of Progress (and Anticipated Completion Date if 'Not Achieved')**

The BSCB is responsible for ensuring multi-agency training takes place as well as monitoring the effectiveness of single agency training. The BSCB delivers a comprehensive programme of multi-agency CSE training to complement each organisation's own in-house training. As CSE is a key element of the Board's strategic priorities considerable work has been undertaken to ensure that all agencies incorporate CSE within Level 1 and 2 training. The new Level 1 and 2 module developed by the BSCB includes a specific case study on CSE.

The degree to which agencies are responding to and delivering on the Board's expectations is monitored through the s175 Annual Self-Assessment and Audit in schools and FE Colleges, and the Annual s11 Audit across all statutory partner agencies.

Evidence of what an organisation is doing to address CSE is an integral part of the Self-Assessment programme.

Awareness of CSE as an issue for anyone involved with children and young people or in contact with them has improved significantly over the last year. The quality of CSE awareness training and the extent to which staff can access that training is now much better and awareness is higher through more staff from agencies undertaking training and accessing resources such as the 'See me, hear me' website.

All staff within the Place Directorate have undertaken mandatory safeguarding awareness training (level 1) during 2015. This is a competency-based training package and all staff are required to complete and achieve the 90% pass rate. This package raises awareness on the signs and indications of CSE and the appropriate reporting mechanisms.

Further information following the 10 February 2016 meeting

This action has been completed. CSE training is available to all partners through the BSCB. A continued programme of CSE awareness raising for staff in all agencies remains an on- going priority in the BSCB CSE action plan for 2016/17.

No.	Recommendation	Responsibility	Original Date For Completion	Cabinet Member's Assessment
R07	That: <ul style="list-style-type: none"><li>• CSE awareness features as part of induction training for all new councillors;</li><li>• For all current councillors there is compulsory awareness training on safeguarding including CSE;</li><li>• Regular training updates are also made available.</li></ul>	Leader	Initial feedback April 2015 and completion Dec 2015	2 – Achieved (Late)

**Evidence of Progress (and Anticipated Completion Date if 'Not Achieved')**

SHORT TERM – By mid-December

1. Relevant reference material will be added to the Member portal and this will be communicated to all Members via the Councillor Bulletin and weekly member communications. This information will also be referenced in subsequent new Member induction programmes.

CSE at a glance – NSPCC BCC works closely with NSPCC

<https://www.nspcc.org.uk/preventing-abuse/child-abuse-and-neglect/child-sexual-exploitation/>  
Child Exploitation and online protection centre – CSE arm of the national crime agency main website

<https://www.ceop.police.uk/>

2. A 'market place' event by BSCB Birmingham Safeguarding Children's Board in February 2016 Council.

MEDIUM TERM – By March 2016

1. We will review (and amend as appropriate) the current one day officer Introduction to CSE programme and make it available to Members. This could be part of a broader programme of Safeguarding learning and development – this is being investigated further
2. We are looking to upload an e-learning module on 'Child Sexual Exploitation' onto the iLearn site on the Learning Centre, People Solutions. The objectives of this e-learning module are to:
  - understand what is meant by CSE;
  - understand how to identify that CSE is taking place;
  - understand how to recognise that a young person is being groomed;
  - understand how the framework is used when assessing for CSE;
  - understand what practitioners and agencies do if a child is a victim of CSE;
  - understand how practitioners can effectively support victims of CSE.

3. The OD and Learning team HR are currently working in partnership with Place Directorate to build an e-learning module entitled Safeguarding Awareness – Children and Adults at risk. There is some content within this on CSE – a definition and the common signs and indicators. The timescale for the module is envisaged to be Spring 2016 and will be reviewed at this point to see if appropriate for Members.

LONGER TERM – during 2016

1. Various councils and public bodies have commissioned an applied theatre production to raise awareness of the issues surrounding CSE entitled 'Chelsea's Choice' by Alter Ego. This will be explored in terms of a joined up approach to awareness raising. Analysis of the costs/benefits would initially be required.

<http://www.alteregocreativesolutions.co.uk/chelseas-choice/>

2. BCC has a video learning package produced by BCC and used in schools. This BAIT programme and its relevance for Member development will be explored further as a possible alternative to the above.

Further information following the 10 February 2016 meeting

Three briefing sessions for Members were arranged in March 2016 and delivered by Barnardo's. 24 Members attended. Another is being arranged.

<b>B Policies and Procedures</b>				
<b>No.</b>	<b>Recommendation</b>	<b>Responsibility</b>	<b>Original Date For Completion</b>	<b>Cabinet Member's Assessment</b>
R08	<p>That the policies and procedures across the City Council ensure CSE is properly dealt with by:</p> <ul style="list-style-type: none"> <li>a) Adopting and working to the West Midlands Regional CSE protocol;</li> <li>b) Making better use of CareFirst (the council's system for case management) to record and analyse and share CSE cases ensuring it is dynamic and reports can be pulled out;</li> <li>c) Improving feedback from Children's Social Care referrals. (Feedback is meant to be provided in specified timescales which does not always happen);</li> <li>d) Establishing CSE champions in key teams including each of the Safeguarding and Family Support hubs who have more in-depth training (and can cascade training to the team) and can act as advisor to the team;</li> <li>e) Reviewing policies and procedures</li> </ul>	Cabinet Member for Children Services	Initial Feedback April 2015 & completion November 2015	2 – Achieved (Late)

	<p>to ensure that parents are seen as equal partners in dealing with CSE and to consider implementing the relational model developed by PACE;</p> <p>f) Reviewing the council's response to young runaways to ensure it meets the requirements of the new statutory guidance on missing children<sup>5</sup>; and</p> <p>g) Developing and embedding a robust missing strategy with clear accountabilities, reporting to the BSCB and an escalation system that is fully understood and effectively implemented; and to investigate the protocol for information sharing when children are classified as absent by the police; and address missing from school as a significant safeguarding risk.</p>			
Evidence of Progress (and Anticipated Completion Date if 'Not Achieved')				
<p>The regional framework was adopted by BSCB in April 2015 and updated regionally with the current framework agreed in September 2015.</p> <p>We are now able to report a consistent CSE data set quarterly as part of the regional framework. The data comes from CareFirst and we are able to track individual cases, though CareFirst is not a good system. MASH is undertaking review of its systems and processes and one important aim is to improve feedback to referrers</p> <p>We have not gone down the CSE champion in every team route. Rather we have one CSE co-ordinator post per area to advise and support staff and support team managers in MASE meetings. Staff in Area offices and hubs have the latest CSE guidance and briefings about CSE. There is significant innovative work in some areas between family support, social work, Police and Barnardo's in relation to responding to the needs of young people and disrupting perpetrators. We are developing ways to spread best practice to all parts of the City, building a cycle of reflection and learning. We have completed a 'Thinking workshop with Barnardo's and are now developing a more joined up partnership approach to meet young people's needs.</p> <p>The new CSE guidance emphasises the importance of keeping parents fully involved, as well as listening to the young person carefully.</p> <p>We have new guidance for children missing from home and care and the Council has signed up to the 'Runaway's charter'. The Missing from Education policy is being reviewed. The Police are in the process of acquiring a new system and policy that includes reporting 'Absent' as well as 'Missing'.</p> <p>The Chief Social Worker Officer has recently agreed to Chair the Missing Operational Group. The multi-agency group are tasked with developing and embedding a robust missing children strategy and procedures. The MOG will have clear lines of accountability and reporting for progress through the Strategic CES Sub-Group to the BSCB.</p>				

<sup>5</sup> [www.gov.uk/government/publications/children-who-run-away-or-go-missing-from-home-or-care](http://www.gov.uk/government/publications/children-who-run-away-or-go-missing-from-home-or-care)

No.	Recommendation	Responsibility	Original Date For Completion	Cabinet Member's Assessment
R09	<p>That the City Council, West Midlands Police and Birmingham Safeguarding Children Board make greater use of licensing to tackle exploitation by:</p> <p>a) Strengthening the BSCB's role in supporting agencies including licensing and trading standards and West Midlands Police to use the resources and capacity to best effect; and</p> <p>b) Licensing Committee reviewing the statement of licensing and use of powers to assess if it is possible to be more proactive in achieving the objective of: "the protection of children from harm" [e.g. in use of licensing conditions / provision of training /ensuring a clear process for reporting and developing a whistle blowing process to empower license holders and taxi drivers etc. to be proactive in reporting concerns.]</p>	Chair of Licensing Committee & Chair BSCB	July 2015	2 – Achieved (Late)
<b>Evidence of Progress (and Anticipated Completion Date if 'Not Achieved')</b>				
<p>a) Since this recommendation was made, the BSCB decided it would no longer be considered as a responsible authority under the licensing arrangement.</p> <p>b) The Licensing and Public Protection Committee carried out a full review of the Statement of Licensing Policy in 2015. The Policy was strengthened, not only in terms of its approach to the protection of children from harm, but also the other Licensing Objectives. The document is now clearer to read and easier to understand, with the aim of assisting applicants when applying for licence and also those who may wish to object to a licence. The Policy came into effect 7 July 2015.</p>				
<u>Further information following the 10 February 2016 meeting</u>				
<p>BCC Licensing and Children's Services officers met in March 2016 to review this and agreed that:</p> <ul style="list-style-type: none"> <li>• A dedicated officer in Children's Services will examine and raise queries as appropriate on all premises licensing requests. This officer will also raise licensing review requests whenever they are made aware of concerns for children or young people in relation to licensed premises. We will also have some support for that officer when she is on leave.</li> <li>• Licensing will offer induction and support to that officer so they become very familiar with the process and expectations.</li> <li>• We have appointed a new Assistant Director – Child Protection, Performance and Partnership. This person will be responsible for overseeing the staff of the safeguarding children board and the safeguarding service area. This person will ensure that the licensing safeguarding function is carried out effectively.</li> </ul>				

No.	Recommendation	Responsibility	Original Date For Completion	Cabinet Member's Assessment
R10	<p>That it is demonstrated that this area of work (including children's services, third sector commissioning and other key departments such as Legal Services and Licensing) is adequately resourced including that:</p> <ul style="list-style-type: none"> <li>a) It is mainstream funded not reliant on annual funding agreements and that third sector contracts abide by the compact;</li> <li>b) Commissioning of services specifically for dealing with victims of CSE, in particular, is improved so that they are in place in good time, prior to the beginning of the financial year;</li> <li>c) The level of resource for return interviews, plus the intensive support required to prevent reoccurrences has been risk assessed;</li> <li>d) A review of the level of administrative support in social work teams and for the CSE Co-ordinators is undertaken to ensure this is not affecting ability to manage caseloads;</li> <li>e) A review of the staffing and caseloads of the multi-agency safeguarding hub (MASH) team is undertaken;</li> <li>f) Partners review how to resource a Child Safeguarding Licensing Officer post/role.</li> </ul>	Cabinet Member for Children Services; Deputy Leader and Cabinet Member for Commissioning, Contracting and Improvement.	April 2015	2 – Achieved (Late)

**Evidence of Progress (and Anticipated Completion Date if 'Not Achieved')**

Examples of how this area of work (including children's services, third sector commissioning and other key departments such as Legal Services and Licensing) is adequately resourced include:

- a) It is mainstream funded not reliant on annual funding agreements and that third sector contracts abide by the compact.

BCC People Directorate services are funded from the mainstream Children's Commissioning Budget (total £2.95m) as part of the Commissioning Centre of Excellence budget. Barnardo's and RSVP are the provider organisations and have been awarded a contract until June 2016 with a total annual contract value of £227k. Barnardo's currently also contributes an equal amount (match funding) from its own reserves. In addition, the Children's Society provide a return interviews service when children have gone missing with a £467k BCC funding commitment over a three year period (not solely for the provision of CSE services). The Community Safety Partnership currently makes an annual £66k financial contribution towards the funding of these services.

- b) Commissioning of services specifically for dealing with victims of CSE, in particular, is improved so that they are in place in good time, prior to the beginning of the financial year.

The current commissioned services have been in place for seven years having undergone a robust selection process. Contract extensions are in place until July 2016 to allow for the development of a strategic commissioning plan for the future procurement of responses to CSE. Three year contracting arrangements will then be put in place.

- c) The level of resource for return interviews, plus the intensive support required to prevent reoccurrences has been risk assessed as sufficient.
- d) A review of the level of administrative support in social work teams and for the CSE Co-ordinators is undertaken to ensure this is not affecting ability to manage caseloads.

A recent review determined that the current level of administrative support is adequate for both social workers and CSE coordinators following a review which showed a need to remodel the support. We have now created a CSE team manager within MASH and three CSE co-ordinator posts – one per area. These are permanently funded and are being recruited to. This is double the existing resource available until now.

- e) A review of the staffing and caseloads of the multi-agency safeguarding hub (MASH) team is undertaken.

As part of the Early Help and Children's social care improvement plan a new operating model was launched in August 2015. This has resulted in the reshaping of the MASH to ensure that all functions are adequately resourced. From February 2016 there will be forty five council-funded posts, including those of the CSE team, in the MASH. We are continuing to review and refine the systems and processes in MASH to improve call-handling, minimise referrals being delayed in the system and improve feedback to referrers. In addition the new CSE team in MASH will improve our response to any CSE concern in MASH or in the areas, and improve feedback.

- (f) Partners review how to resource a Child Safeguarding Licensing Officer post/role.

A review has concluded that a specific post is not required as the collaborative efforts of the respective licensing and child protection unit have the necessary expertise and capacity to address this issue.

#### Further information following the 10 February 2016 meeting

Recruitment of CSE area coordinators now completed.

See above R09 – it has now been agreed that a named person in children's services will consider all licensing applications in relation to children's safeguarding.

No.	Recommendation	Responsibility	Date Concluded by Overview and Scrutiny Committee	Tracking Assessment
R11	That when the City Council commissions services, safeguarding, including CSE, be built into the service specification and monitoring by: a) Ensuring that any contract which will involve direct working with children and young people, families and	Deputy Leader; Cabinet Member for Commissioning, Contracting and Improvement & Cabinet Member	10 Feb 2016	1- Achieved (Fully)

	homes and transport services includes an appropriate level of requirement around CSE (e.g. information and training, procedures, and active involvement in multi-agency strategy and Family Common Assessment Framework meetings); and b) Providing reassurance that the school nurse contract due to be re-commissioned by Public Health will include these provisions.	for Health and Social Care		
--	---	----------------------------	--	--

**Evidence of Progress (and Anticipated Completion Date if 'Not Achieved')**

It is a requirement of all contracted organisations to have the necessary safeguarding policies and procedures in place and it is the responsibility of the commissioning body to ensure that they are effectively operationalised. Prior to this, during the procurement selection process, organisations are evaluated against their ability to respond effectively to the issue of CSE. The use of the Birmingham Safeguarding Children Board – Safeguarding Section 11 Audit tool provides a self-assessment framework for organisations and includes sections regarding CSE.

The school health advisory service (formerly school nursing) specification, contract compliance and monitoring requirements all include these provisions.

<b>No.</b>	<b>Recommendation</b>	<b>Responsibility</b>	<b>Original Date For Completion</b>	<b>Cabinet Member's Assessment</b>
R12	That in order to manage the specific risks of <b>looked after children</b> : a) The corporate parenting strategy is reviewed to ensure it includes proper reference to CSE; b) The Corporate Parenting Board provides clear demonstrable actions that CSE is a priority and that the vulnerability of looked after children to CSE is understood; c) Appropriate risk assessments continue to be carried out when placing children in residential care and that decisions are needs based and not resource based; and d) That there are appropriate policies and procedures (in both internal and external homes) and that staff have the confidence and tools to ensure day to day vigilance and action relating to CSE; and to ensure that these issues are considered in the children's home redesign.	Cabinet Member Children Services	April 2015 – Initial Feedback and completion November 2015	2 – Achieved (Late)

**Evidence of Progress (and Anticipated Completion Date if 'Not Achieved')**

The new corporate parenting strategy was presented to Corporate Parenting Board in March 2015 and included a focus on vulnerabilities and risks to children in care including CSE.

CSE will be a theme for a specific Corporate Parenting Board in early 2016.

A new placement process has been developed, with the emphasis on each child's needs. Costs are not an issue, rather finding the best safe and therapeutic setting that can take forward the child's tailored care plan.

All homes are Ofsted inspected against a set of standards that now include resource, skills and design to manage vulnerable young people who are at risk of CSE and other vulnerabilities. BCC does not place children where homes are deemed 'inadequate'. Five BCC internal homes are now being transferred to the Priory group from April. The Priory group have a high awareness of CSE and therapeutic needs of young people and demonstrated their quality in the procurement process. Our contract with all providers covers their ability to meet the needs of young people in relation to CSE and other risks.

Further information following the 10 February 2016 meeting

CSE is a main topic on the next Corporate Parenting Panel on June 8<sup>th</sup> 2016.

No.	Recommendation	Responsibility	Date Concluded by Overview and Scrutiny Committee	Tracking Assessment
R13	That Legal Services: a) Review and assess what can be done to: strengthen the disruption of suspected perpetrators in the Civil Courts; support victims through to prosecution; and increase conviction rates and successful use of warning letters and civil orders, in association with WMP and CPS; and b) Review the powers available to disrupt suspected perpetrators and develop a planning tool for disruption for Birmingham, building on the tool kit developed in Derbyshire. This needs to then be used and embedded in Children's Social Care.	Deputy Leader	10 Feb 2016	1 - Achieved (Fully)

**Evidence of Progress (and Anticipated Completion Date if 'Not Achieved')**

Birmingham was the first LA in November 2014 to take out injunctions against alleged perpetrators. These were Civil actions prepared with the co-operation of West Midlands Police. Subsequently the Midlands Circuit judge, Justice Keehan, requested that BCC and WM Police agreed a legal Protocol to ensure we share and agree accurate information when bringing such matters before the Court. This is a new area for the law. The protocol has been put to Justice Keehan recently and other new case law is shaping this area. Perpetrators can be disrupted by Police actions working alongside licensing when appropriate. Children's social care focus is on the safety and wellbeing of the young person including trying to rebuild family relationships wherever possible. The civil injunctions are a good example where social care and Police can work together to jointly achieve our objectives.

<b>C Multi-Agency Working</b>				
<b>No.</b>	<b>Recommendation</b>	<b>Responsibility</b>	<b>Original Date For Completion</b>	<b>Cabinet Member's Assessment</b>
R14	That the Chair of Birmingham Safeguarding Children Board: a) Takes further steps to embed the CSE strategy and implementation of the action plan by holding partners to account and ensuring they take appropriate action; b) Continues to provide challenge as required to schools following the analysis of the annual section 175 audits; and c) Evaluates the effectiveness of multi-agency working including the Strategic CSE Sub-Group, CMOG, Multi-Agency Sexual Exploitation meetings etc. (Not MASH – see Recommendation 16).	Chair of Birmingham Safeguarding Children Board	April 2015  July 2015 – Changes sustained	2 – Achieved (Late)
<i>Evidence of Progress (and Anticipated Completion Date if 'Not Achieved')</i>				
<p>The BSCB published its CSE strategy, in line with the West Midlands regional framework, in Summer 2015. It was highlighted in the BSCB annual report which was presented to Scrutiny Committee in November. The CSE sub-group continues to develop and embed CSE work across all agencies and promote collaboration. A recent example is the CSE legal protocol endorsed in the High Court.</p> <p>All schools completed their Section 175 audits this year. The audit included several questions about CSE awareness and prevention.</p> <p>A programme of multi-agency case audits of cases involving CSE is underway. This is part of an evaluation of multi-agency systems and processes.</p>				

<b>No.</b>	<b>Recommendation</b>	<b>Responsibility</b>	<b>Original Date For Completion</b>	<b>Cabinet Member's Assessment</b>
R15	That all Birmingham Safeguarding Children Board partners improve the shared understanding of CSE cases by: a) Ensuring there is consistency and all officers and partners are working to the soon to be agreed West Midlands Regional CSE operating protocol; b) Developing systems to ensure sharing information across the region to enable a full multi-agency problem profile can be updated and shared to ensure patterns and associations relating to victims, offenders and locations can be examined;	Regional CSE Co-ordinator & Chair BSCB	April 2015 – Initial Feedback and completion July 2015	2 – Achieved (Late)

	c) Using intelligence and analysis to improve understanding of what tactics and approaches work best; and d) Ensuring those providing intelligence and evidence receive appropriate feedback.			
--	--	--	--	--

***Evidence of Progress (and Anticipated Completion Date if 'Not Achieved')***

Since Summer 2015 there has been a regional CSE co-ordinator in post who collates information and data across all 7 WM LAs on CSE each quarter. We now have nine months of data and can begin to see trends, including how multi-agency actions are helping young people so that the risk level is diminished. The West Midlands regional framework was reviewed in summer 2016 and is well embedded.

As a result of intelligence and analysis, there is now a review of the risk tool to ensure it considers young people and family strengths as well as dangers.

There is a quarterly data and intelligence report that goes to all partners.

<b>No.</b>	<b>Recommendation</b>	<b>Responsibility</b>	<b>Original Date For Completion</b>	<b>Cabinet Member's Assessment</b>
R16	That reports be provided on: a) The operation of the MASH: workloads, impacts, lessons learnt, and funding (after 6 and 12 months of operation); b) Membership of and participation within MASH, including the role of health, the third sector and family support workers; and c) Data sharing between the MASH partners.	Cabinet Member Children's Services and Chair BSCB	April 2015 & September 2015	2 – Achieved (Late)

***Evidence of Progress (and Anticipated Completion Date if 'Not Achieved')***

The development and improvement of MASH is an on-going process. There has been substantial BCC, Police and Health investment in MASH. It remains the gateway and front door for all children's referrals including CSE. Within MASH the CSE co-ordinators and Police with a CSE focus are located. Recent changes have moved the child protection assessment function to the area assessment teams. The CSE co-ordination function remains in MASH and we are now building a strong Missing Children Intelligence function. Voluntary sector staff are also located in MASH.

CSE data and intelligence sharing occurs within the monthly CSE Operational group meetings chaired by WM Police. MASH provides Birmingham's data for the regional quarterly CSE data collection.

<b>No.</b>	<b>Recommendation</b>	<b>Responsibility</b>	<b>Original Date For Completion</b>	<b>Cabinet Member's Assessment</b>
R17	That after six months of operation (March 2015) there is a review to consider if a dedicated multi-agency child sexual exploitation hub should be developed alongside MASH that could provide end to end (case identification through to prosecution) support and action.	Cabinet Member Children's Services and Chair BSCB	April 2015	2 – Achieved (Late)

***Evidence of Progress (and Anticipated Completion Date if 'Not Achieved')***

It has been agreed that a multi-agency CSE team be located in MASH comprising CSE co-ordinators (BCC), and specialist Police, health and voluntary sector staff. Such an arrangement has been in place for some time, but will be strengthened by a third co-ordinator and a MASH team manager with a CSE lead. The CSE team co-ordinates intelligence about CSE young people at risk with intelligence on perpetrators and locations, so that co-ordinated action is undertaken through the CSE Operational Group.

<b>D</b>	<b>Tracking</b>			
<b>No.</b>	<b>Recommendation</b>	<b>Responsibility</b>	<b>Original Date For Completion</b>	<b>Cabinet Member's Assessment</b>
R18	That the Quartet regularly tracks improvements in this area as it relates to the City Council.	Quartet: [Leader, Cabinet Member for Children's Services, Chief Executive and Strategic Director for People]	On-going	1 – Achieved (Fully)

***Evidence of Progress (and Anticipated Completion Date if 'Not Achieved')***

The Quartet meets each fortnight to consider over-arching progress in children's services, including child protection, CSE and other risks to young people. Since January 2016 a new children's commissioner, Andrew Christie DCS of 'Tri-Borough', appointed by DfE has been in post providing challenge to BCC and the Quartet around service development including CSE.

<b>D</b>	<b>Tracking</b>			
<b>No.</b>	<b>Recommendation</b>	<b>Responsibility</b>	<b>Original Date For Completion</b>	<b>Cabinet Member's Assessment</b>
R19	That an assessment of progress against the recommendations made in this report be presented to the Education and Vulnerable Children Overview and Scrutiny Committee in March 2015. The Committee will schedule regular progress reports until all agreed recommendations are implemented.	Cabinet Member Children's Services	April 2015	1 – Achieved (Fully)

***Evidence of Progress (and Anticipated Completion Date if 'Not Achieved')***

This report is that assessment of progress.