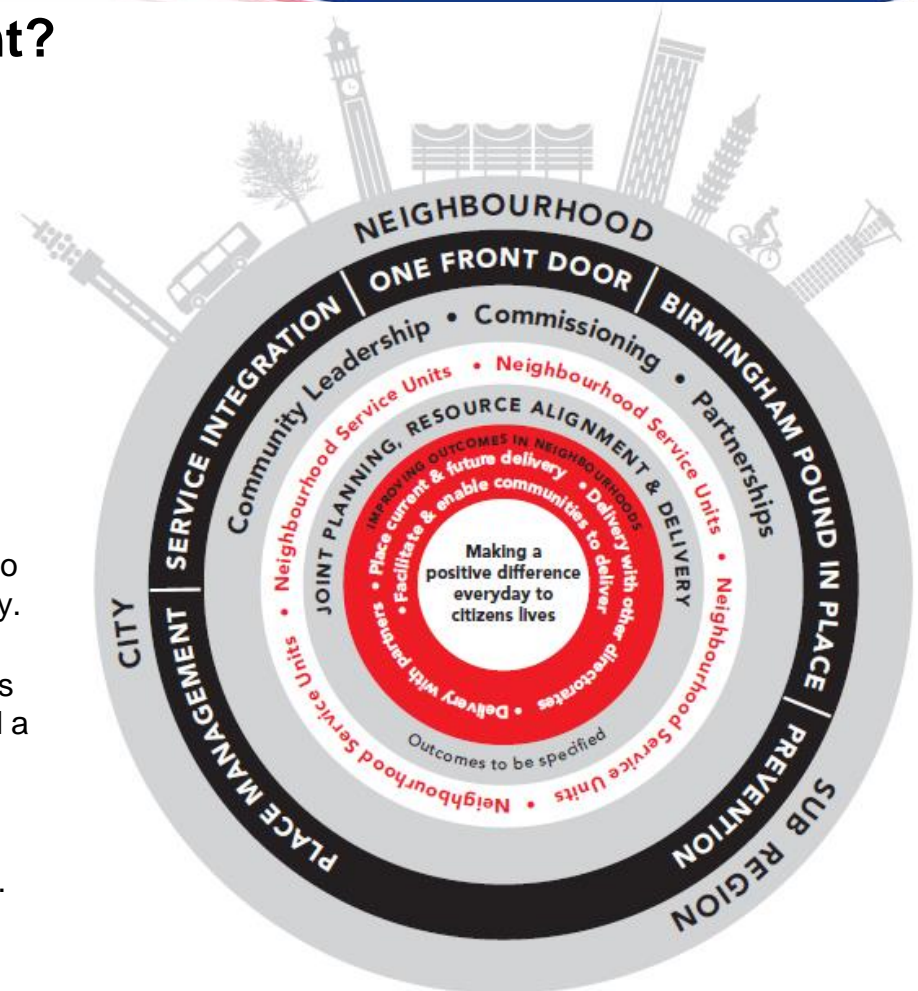


# What is Place-based Management?

- Commitment to the Clean, Green and Safe agenda
- An approach to improving how neighbourhoods are managed which includes integrated working focusing on early intervention, prevention and support.
- Using innovative solutions to longstanding problems or issues in the community.
- Engaging with stakeholders, especially the community, to get a consensus about priorities for improving the locality.
- Absolute commitment to common ownership of problems and collaboration to find solutions – One Front Door and a “Don’t walk by” attitude.
- A can-do attitude to doing things differently and working together to make things work to benefit neighbourhoods.



## Place Managers – Selly Oak

Ward	BCC stock	Single point of contact	Role	E-mail
Billesley	2445	Melvin Powell	Place Manager	Melvin.powell@birmingham.gov.uk
Bournville	883	Christopher Wood	ASB Quality & Performance – Place Manager	Christopher.wood@birmingham.gov.uk
Brandwood	2571	Alison Nicholls	Place Manager	Alison.nicholls@birmingham.gov.uk
Selly Oak	380	Michael McMillan	ASB Partnerships – Place Manager	Michael.mcmillan@birmingham.gov.uk

Sarah Wong continues as the Tenant Participation Officer



## Place Manager role

- Work across Wards, Neighbourhoods, and the South Area to deliver an excellent Landlord Service
- Coordinate services and act as Single Point of Contact to deliver a clean, green and safe environment
- Manage their team of Officers to provide an effective ASB service, Tenancy & Estate Management, and Street Scene
- Promote tenant participation and engagement
- Produce a Place Action Plan for their respective Ward and consult with the local community, partner agencies, third-sector providers, etc.
- Use effective communication e.g. Twitter/social media
- Work with partners to identify joint procurement and commissioning – maximise the use of housing budgets



# Think Family

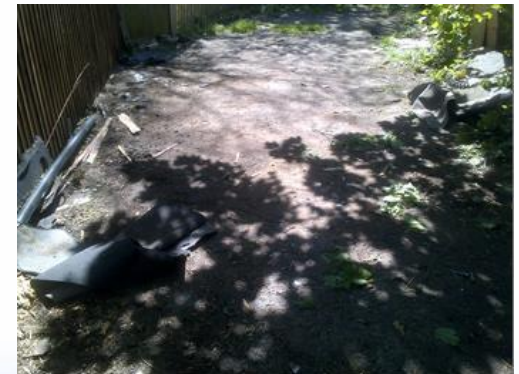
- Support for victims of domestic abuse, Referral/joint working with Birmingham and Solihull Women's Aid.
- Assistance with school applications and liaising with the Children Missing from Education Team. Improving school attendance
- Support for Autism, ADHD & ADD.
- Use of food banks
- Support with Housing Applications, housing repairs, garden clearance, integrated working with Housing Officers
- Joint meetings with the Department of Work and Pensions, Counselling referrals, Grant applications
- Referrals to West Midlands Fire Service for home safety checks
- Parenting classes
- Reduction in incidents of ASB through multi-agency working
- Debt advice & budgeting.
- Activities for after school and school holidays.

- **13** families successfully engaged - early intervention and partnership working has enabled them to effect and maintain change.
- **6** families referred through to Intensive Family Support
- **4** open assignments working with families
- **13** new referrals for Think Family Support and we will be working with these shortly





## Making a positive difference everyday to citizens lives





# #TidyBrum



## COMMUNITY FURNITURE SWAP SHOP

**MONDAY 8TH JUNE**  
**10AM TO 2PM**



**SHELLY TOWER**  
**CAR PARK**  
**OVERBURY ROAD**

DO YOU HAVE ANY FURNITURE OR HOUSEHOLD  
ITEMS YOU NO LONGER WANT? OR PERHAPS  
THERE IS SOMETHING YOU NEED FOR YOUR  
HOME?



**THEN WHY NOT COME ALONG TO OUR  
COMMUNITY FURNITURE SWAP SHOP!**



**IF YOU NEED HELP GETTING YOUR  
ITEMS TO AND FROM THE SWAP SHOP  
- JUST POP ALONG AND TALK TO A  
MEMBER OF THE SWAP SHOP TEAM  
WHO WILL BE HAPPY TO HELP YOU.**

**BRING ALONG ANY UNWANTED HOUSEHOLD  
ITEMS YOU HAVE TO DONATE, AND FEEL  
FREE TO TAKE A LOOK AT WHAT HAS BEEN  
DONATED FOR ANYTHING YOU MAY NEED.**

**ITEMS LEFT AT THE END OF THE SWAP SHOP WILL BE DIS-  
TRIBUTED BETWEEN LOCAL CHARITY SHOPS.**





## #TidyBrum





# Events

## Happy Valley event at Daisy Farm Park

- Integrated working – Senior Service Manager, Place Manager, Housing Officers and Tenant Participation Officer all in attendance
- Multi-agency working with Dog Warden, West Midlands Police, Children's Centre
- Third sector agencies such as Fusion Gymnastics, Narthex Food Bank,
- Local schools - Hollywood, Highters Heath Community, Billesley, Our Lady of Lourdes and Yardley Wood
- Elected members







- **@SSMSouthHousing**
- **@PlaceBournville**
- **@BillesHousing**
- **@BrandHousing**
- **@getinvolvedsell**
- **@WeoleyHousing**
- **@KNHousing**
- **@QuintonHousing**
- **@NorthfieldHsng**
- **@PlaceLongbridge**
- **@HarborneHousing**
- **@edgbastonri**
- **@BARTLEYHOUSING**

