

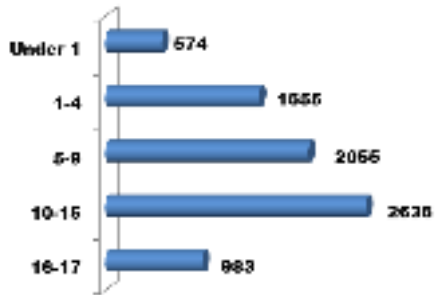
# Children's Social Care Birmingham (May 2017)



**Net Budget**  
**162.5M**

**7803**  
**Open Cases**

Ages



% Ethnicity Breakdown

Percentage of 0 to 17	England	Birmingham	BCC
White	80	43	47
Mixed/multiple ethnic group	5	10	14
Asian/Asian British:	10	36	23
Black/African/Caribbean/Black British	5	11	16



**2081** families supported by Family Support/Think Family



**101**

The number of children matched for adoption in 16/17



**971** Children with a CP Plan

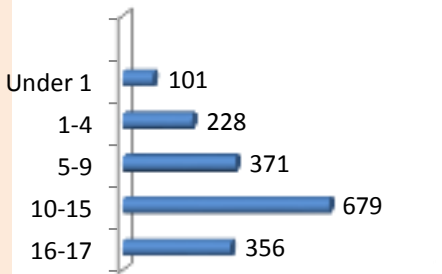


- **119** unaccompanied asylum seekers
- **349** children in families with no recourse to public funds
- **498** BCC Foster Carers



**1735**

Children in Care who are aged:



**35.80%**  
YOS reoffending rate Eng & Wales 38.0%



**4**  
Homes for disabled children

**655**  
Disabled Children