



West Midlands Ambulance Service
University NHS Foundation Trust

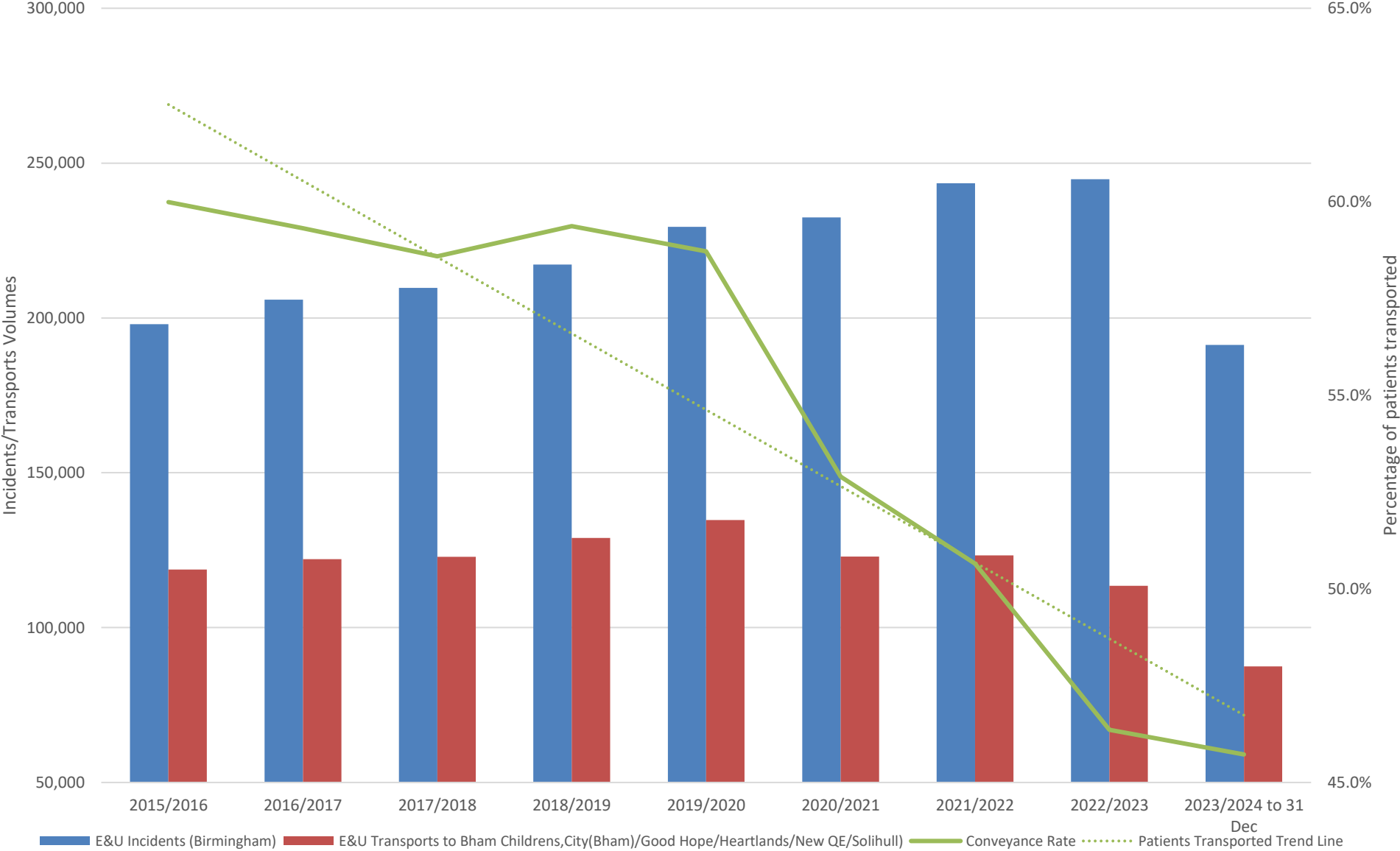


Birmingham & Solihull ICS Demand, Hospital Delays & Performance

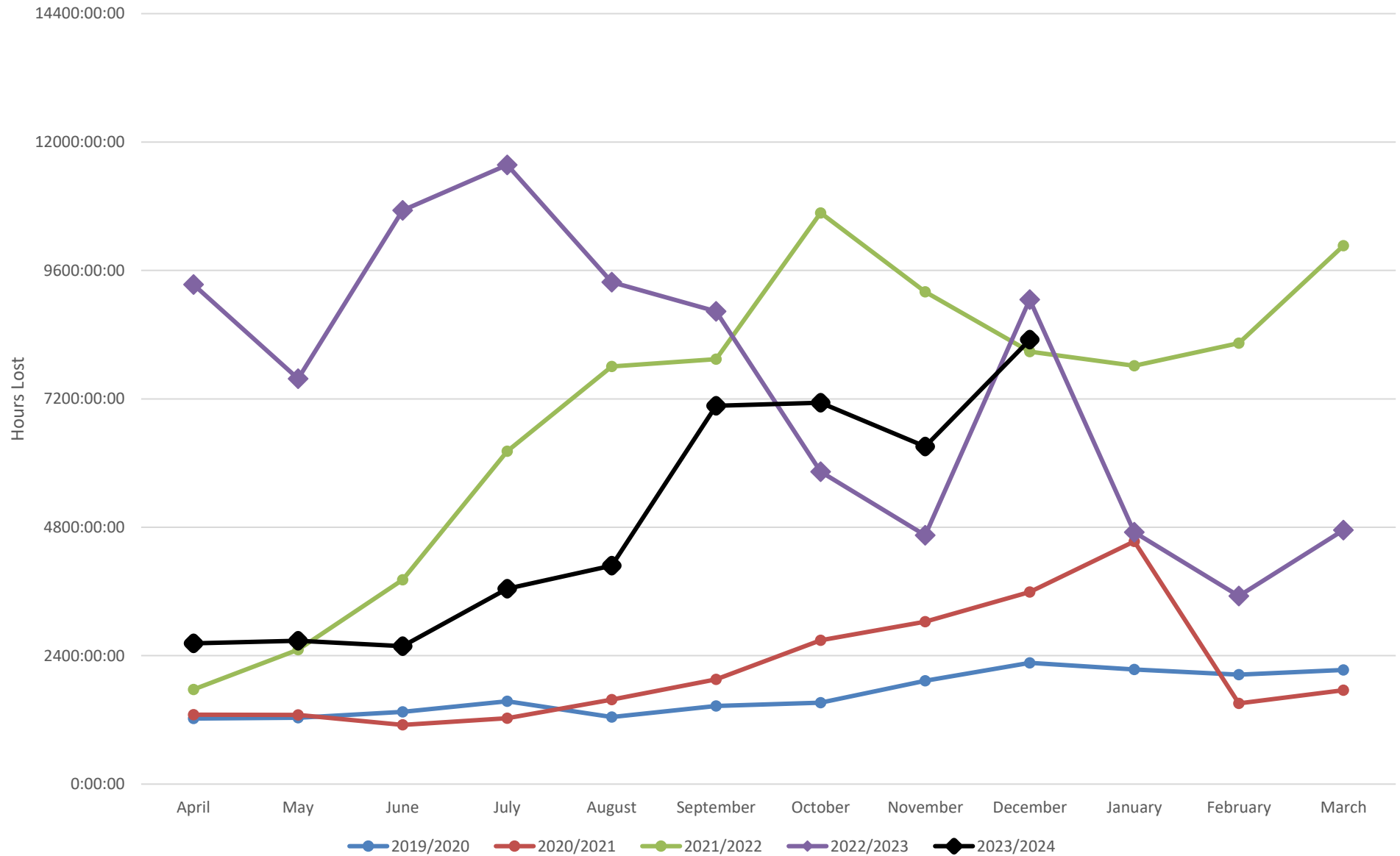
December 2023

Trust us to care.

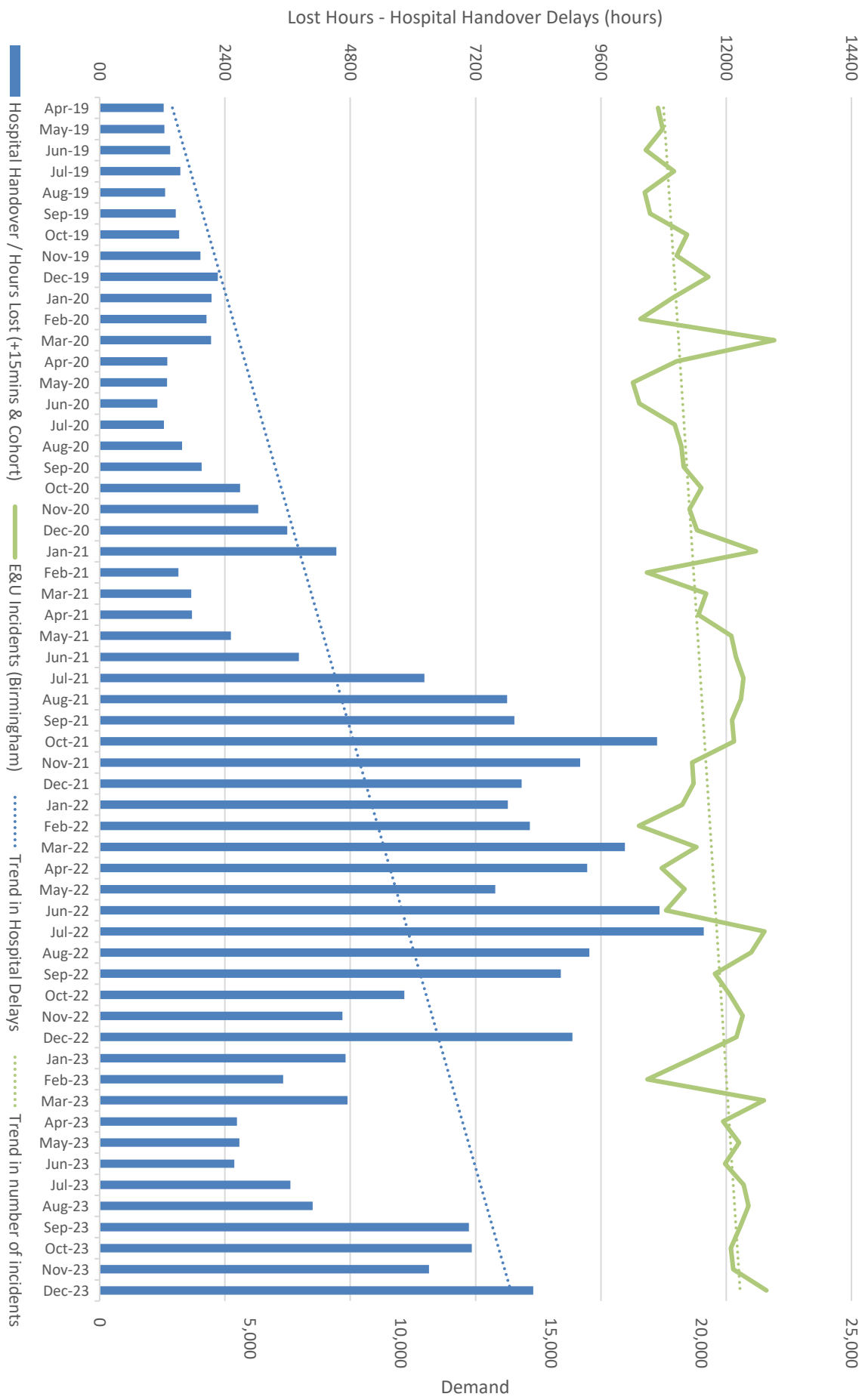
Incidents, Transports & Conveyance Rate Year on Year



Birmingham Hospitals Handover Delays >15mins (inc cohorting) - Total Hours by Month

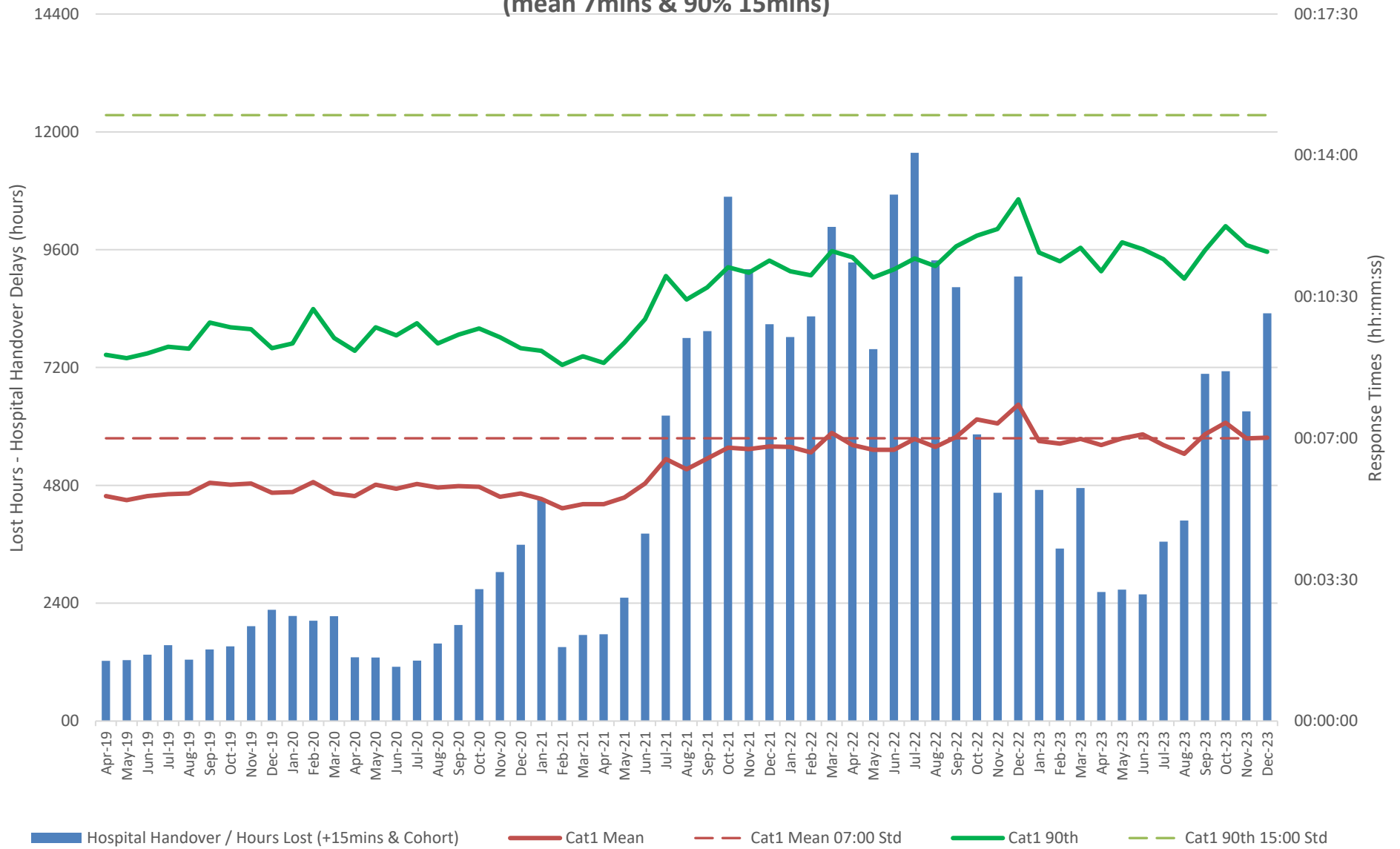


Operational Demand & Handover Delays

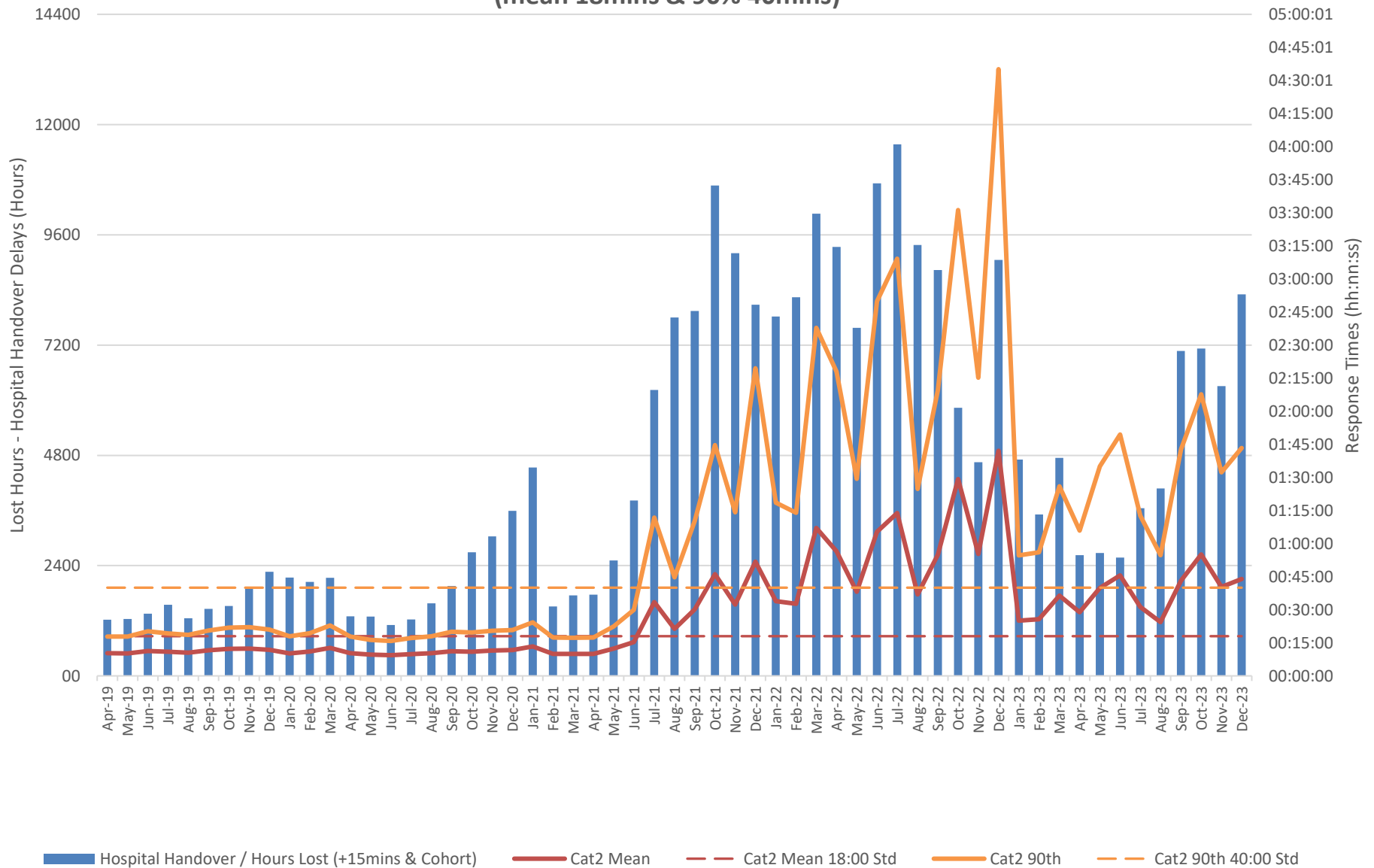


OFFICIAL - Business data that is not intended for public consumption. However, this can be shared with external partners, as required.

Hospital Handover Delays > 15mins and Cohorting vs Operational Performance Cat1 (mean 7mins & 90% 15mins)



Hospital Handover Delays > 15mins and Cohorting vs Operational Performance Cat2 (mean 18mins & 90% 40mins)



Hospital Handover Delays > 15mins and Cohorting vs Operational Performance Cat 3 (mean 60mins & 90% 120mins)

