



NATURALLY BIRMINGHAM: FUTURE PARKS ACCELERATOR

CWG 2022 OSC

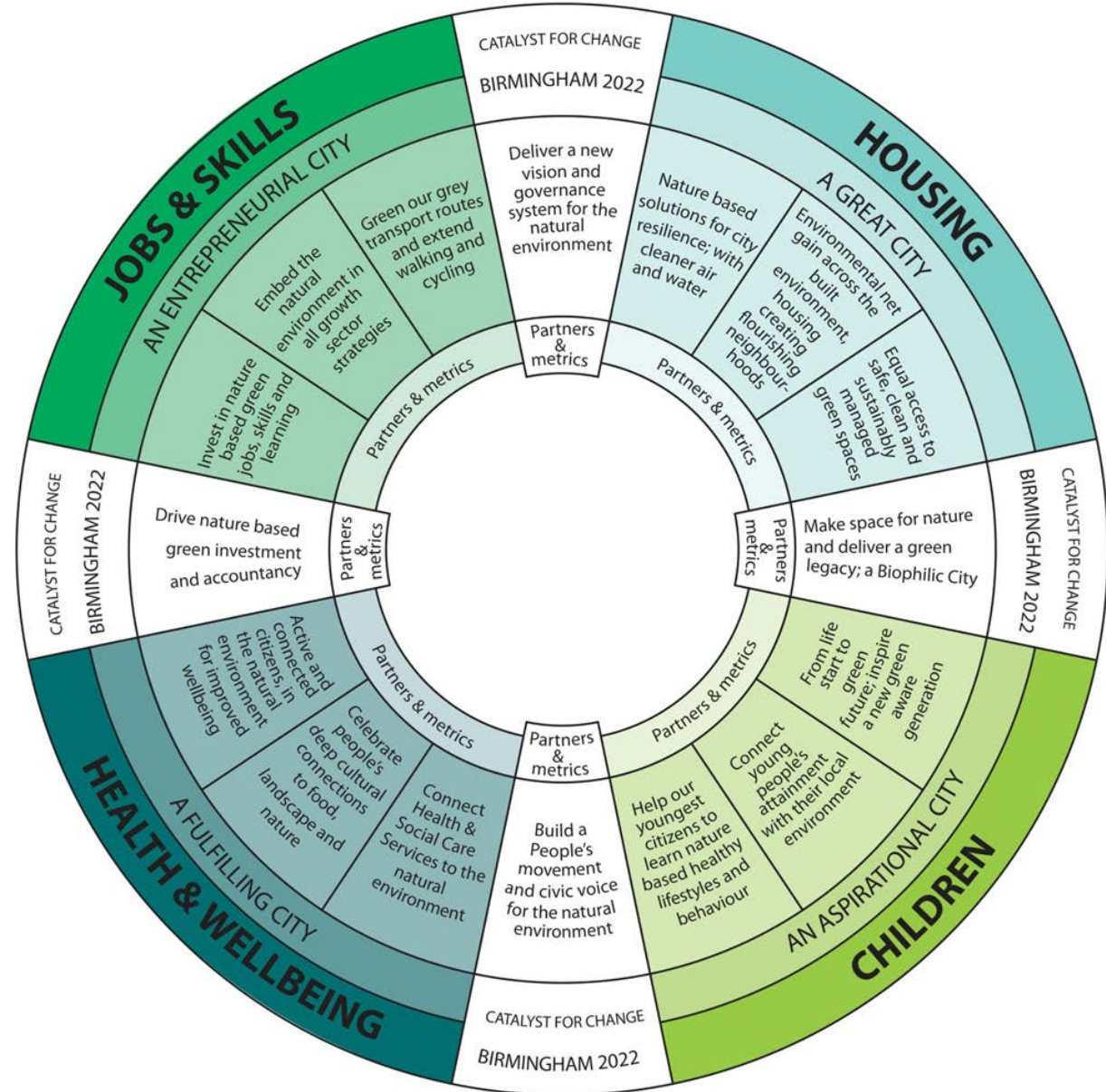
Hamira Sultan, FPA Director

INTRODUCTION

- What is Future Parks Accelerator?
- What do we mean by Environmental Justice?
- Opportunities to link up agendas

NATURALLY BIRMINGHAM'S VISION

- This wheel diagram represents the original vision for Naturally Birmingham, at the time of the bid in 2019.
- The city set itself 5 strategic outcomes around Jobs & skills, Housing and the built environment, the future of children, health & wellbeing, and maximising the benefits from hosting the 2022 Games.
- All the aspirations listed are derived from the 2018-2022 Council Plan.

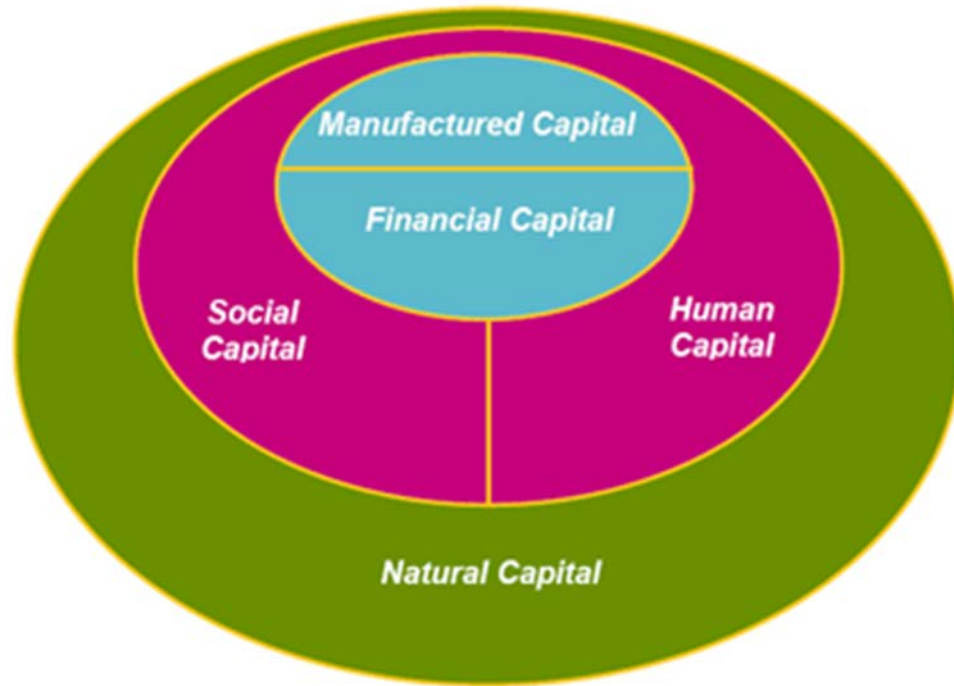


YOU SAID...WE DID...

Outcomes for Heritage		Outcomes for people	Outcomes for communities	
Better managed	In better condition	Developed skills	Your local area/community will be a better place to live, work or visit	Your organisation will be more resilient
'Naturally Birmingham' Objectives				
Integrated green neighbourhood and well-being plans – 20 minute neighbourhoods and the Dawberry Fields Effect	Better managed parks and greenspaces – CWG legacy funding to support parks foundation, communal gardens, Green User Guide	New workforce and community skills – You tube Skills showcase	A Peoples Movement and Civic Voice for the Natural Environment – Earth Stories and The Green Bham Website	Review of corporate financial mechanisms and land valuation formula – sponsorship, and crowdfunding
Draft Outcomes Framework for Health & Parks - 20 minute neighbourhoods	Organisational capacity – Green Champions Programme		New cohort of people and young generation engaged in parks – Park Stars and Mentoring Programme	Preparation for Natural Capital Investment Strategy – Eco Mapping work BBCWT
	25 year Nature Recovery and Green Infrastructure Strategy - Eco Mapping work BBCWT			Re-alignment of base budgets – Finance Steering Group
Future Parks Board				
'Naturally Birmingham 5 Frameworks				
Framework for Healthy City	New Governance Framework	Framework for Environmental Justice	Framework for Citizen Engagement	Framework for Sustainable Finance

ENVIRONMENTAL JUSTICE – KEY LINK TO CWG LEGACY OF TACKLING INEQUALITIES

- Clustering of poor outcomes – all linked with lack of access to poor quality green space
- Levelling up agenda
- How nature connects to all capitals



Financial -real estate, loans, grants, money;

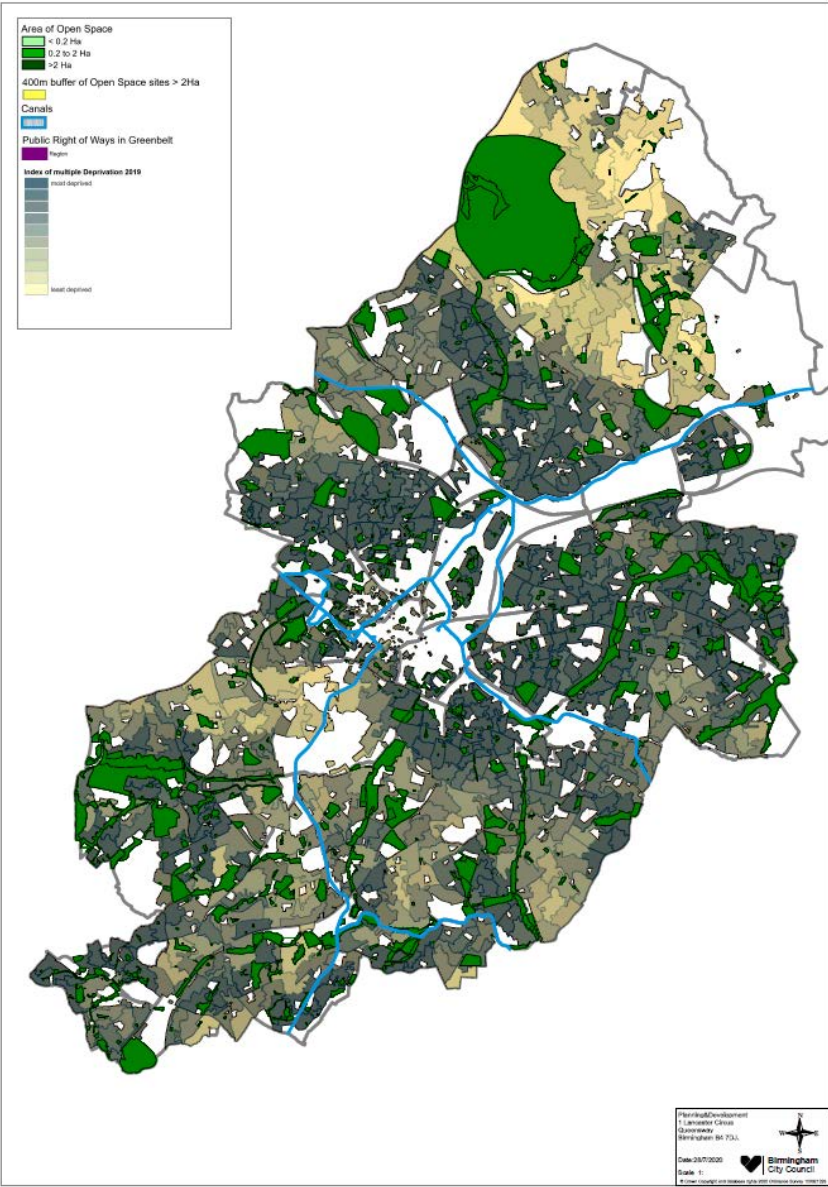
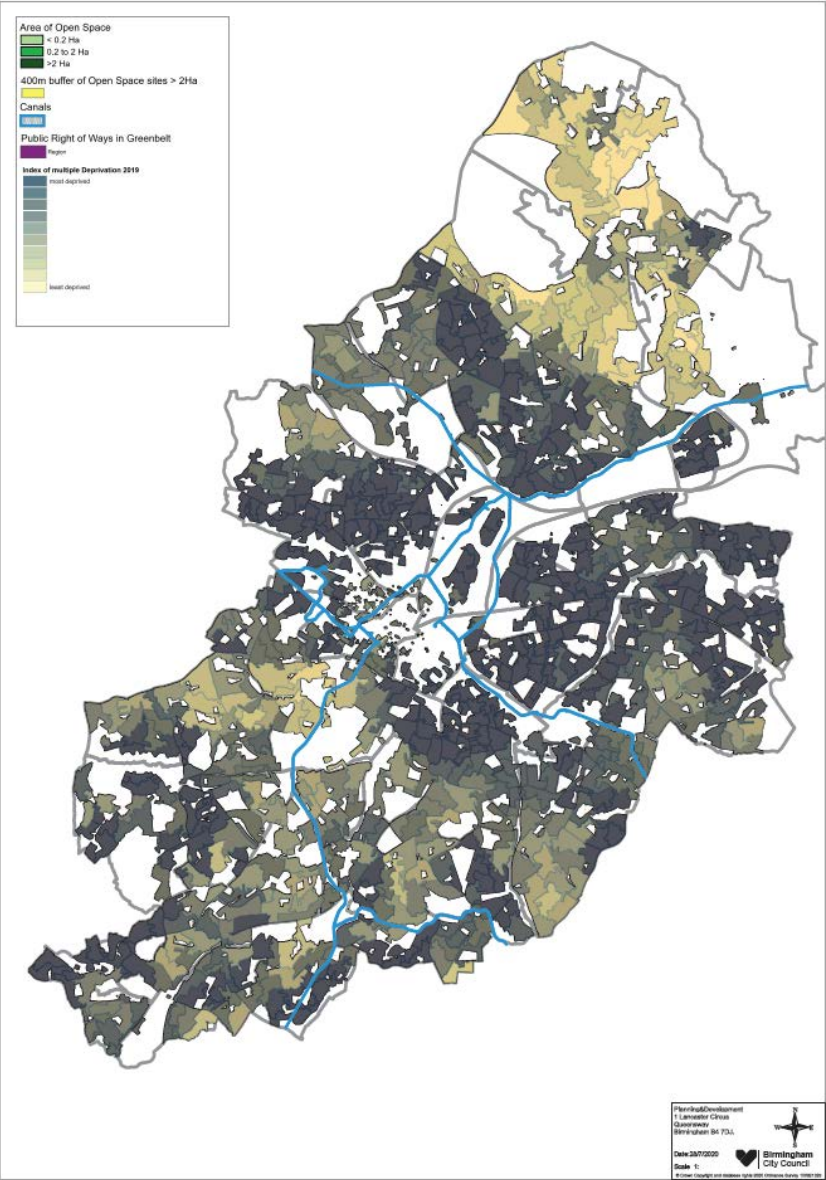
Manufactured- the built environment and all infrastructure including digital;

Human -captures skills, knowledge, education and health;

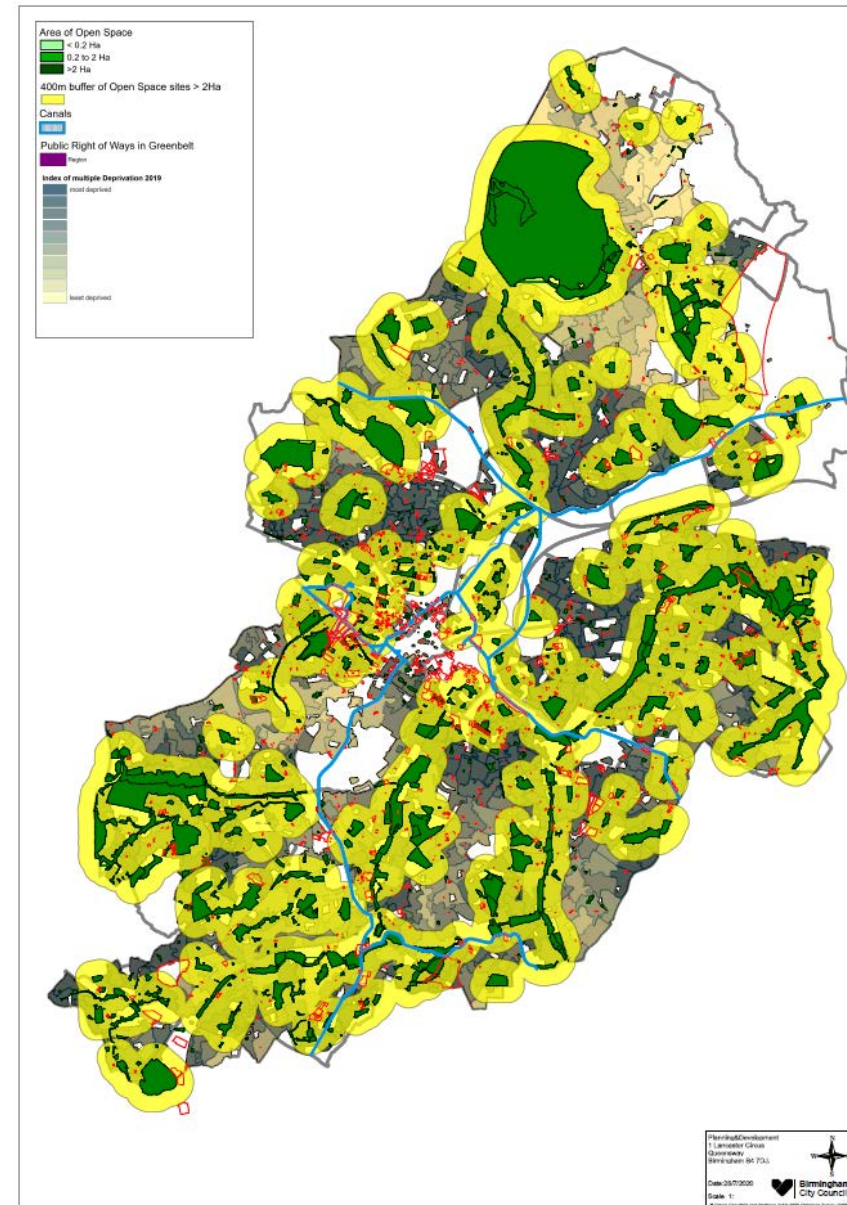
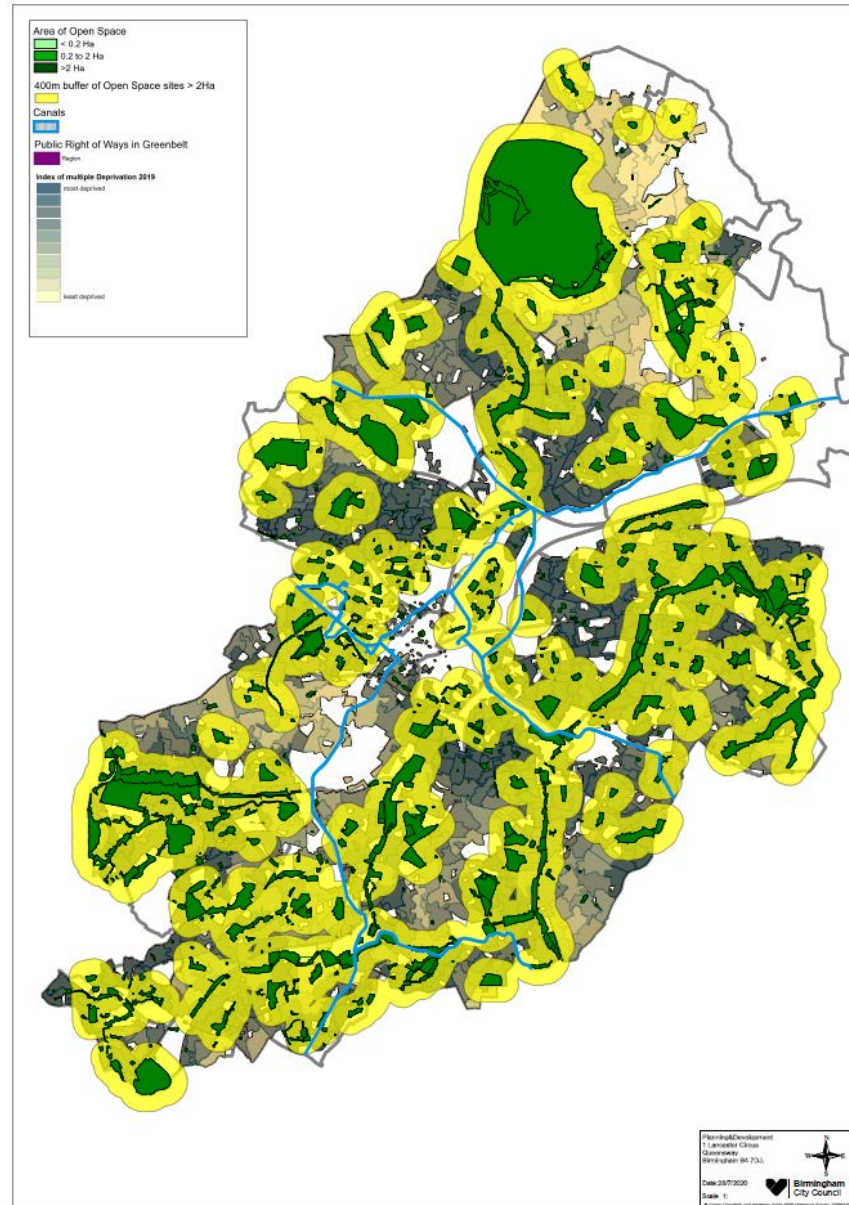
Social -culture, community & governance;

Natural -all natural resources

COMPOUND MAP – IMD AND POS



COMPOUND MAP – IMD AND POS



COMPOUND MAP – IMD AND POS



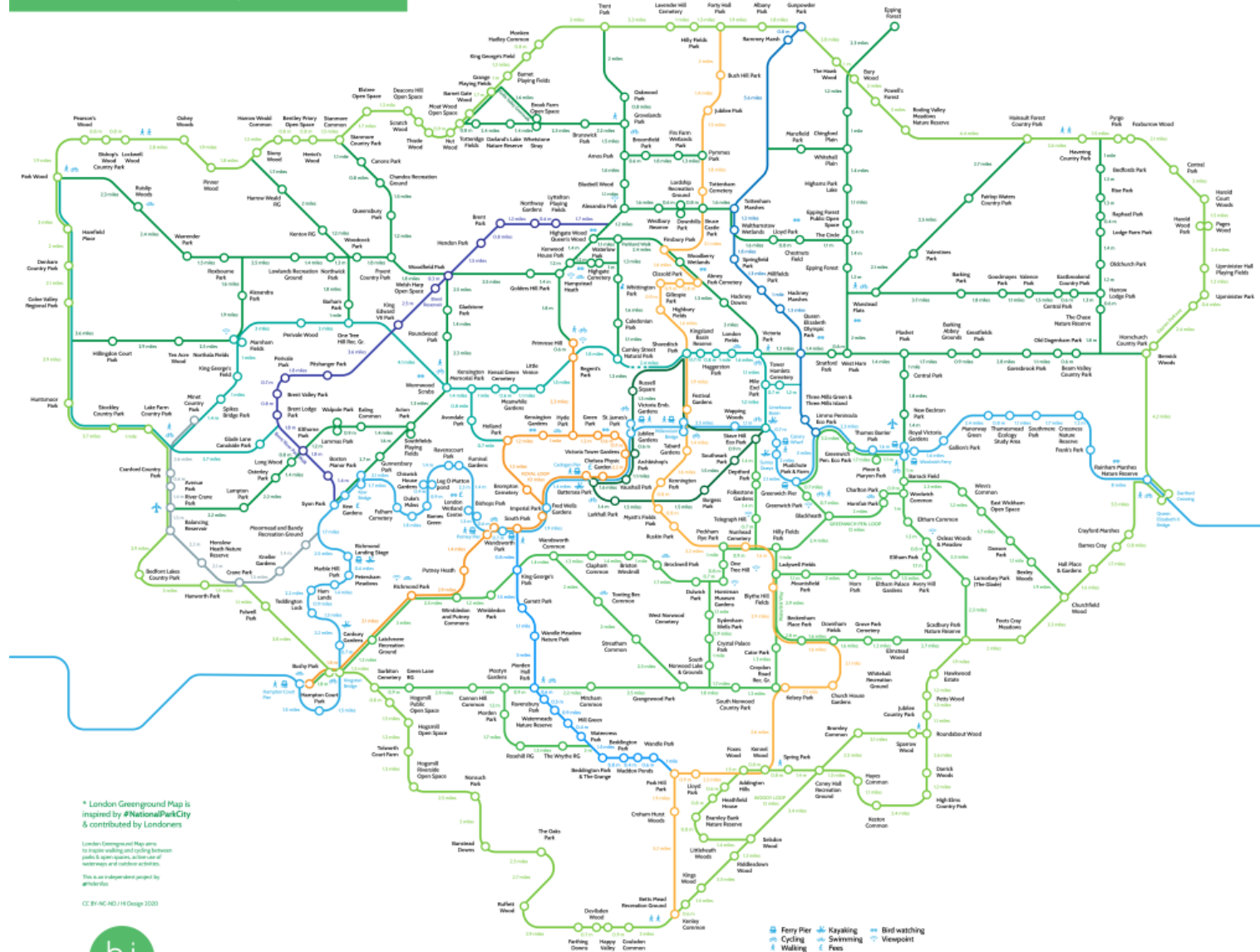
Bordesley and Highgate Ward

A	B	C	F	H	I	L	M	N
Constituency	Wards	Canopy % (25% baseline target)	PPF+ POS Ha /1000 (Ward level) BDP Minimum threshold 2Ha.	2019 Decile (1 = 10% most deprived nationally)	2018 Mid-year Population estimates by ward	Projected Area population at 2031	Revised PPF+POS/ 1000 if no change in supply	Percentage Change
Ladywood	Bordesley & Highgate	9.66	1.02	1	15,760	38,604	0.42	-59%
Ladywood	Ladywood	14.6	0.75	2	28,420	46,695	0.46	-39%
Sutton Coldfield	Sutton Walmley & Minworth	19.2	6.85	7	15,980	23,863	4.59	-33%
Ladywood	Newtown	12	1.24	1	14,620	20,140	0.90	-27%
Ladywood	Soho & Jewellery Quarter	18.8	0.99	2	27,130	36,116	0.75	-25%
Perry Barr	Perry Barr	20	5.72	4	20,620	26,200	4.50	-21%

LINKING UP AGENDAS

- How does FPA and CWG link up?
- Both want to see green spaces being maximised as assets
- Both want to tackle inequalities
- Learning from Witton Lakes pilot – green spaces not only offer a chance to increase Physical Activity, but also increase connectedness and wellbeing
- Seen great success of Active parks – but funding is reducing
- So what are we doing?
 - Supporting Birmingham Open Spaces Forum to operate more like a Parks Foundation – 130 Friends of Park groups
 - Sponsorship of parks
 - Working with Wellbeing Service to make better use of green spaces in conjunction with wellbeing centres
 - Making the hidden more visible

London Greenground *



* London Greenground Map is inspired by #NationalParkCity & contributed by Londoners

London Greenground Map aims to inspire walking and cycling between parks & open spaces, active use of waterways and outdoor activities. This is an independent project by @hi.design

CC BY-NC-ND 4.0 Design 2020



QUESTIONS