

# Covid Vaccination Project

## Data extracted on 18.05.2021

# First Doses

- As of 20.05.21 the rollout has reached people aged 34yrs or over, including those who turn 34yrs before the 1<sup>st</sup> of July
- People who are eligible under the age of 30yrs for a vaccine are offered the choice to have either the Pfizer or the Astra Zeneca vaccine following a conversation with a healthcare professional
- Continuing to accommodate cohorts 1-11 bookings (40+) who have not yet had their first dose to take up the offer
- System comms/text messaging/ and direct contact from GPs in areas where uptake is low

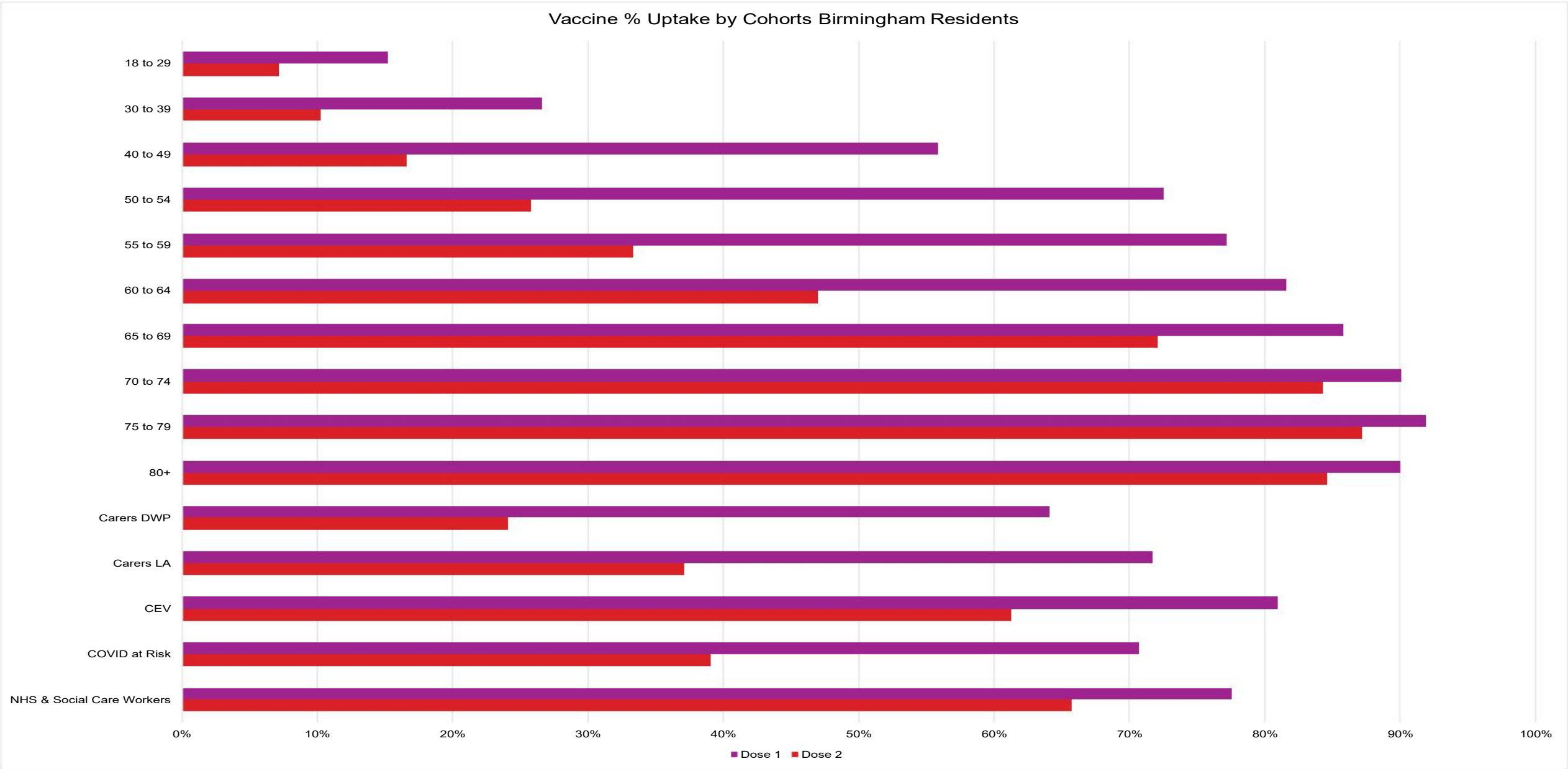
# Second Doses

- In line with revised JCVI guidance 2<sup>nd</sup> Doses for Cohorts 1-9 accelerated from 12 weeks to 8 weeks, aiming to complete this by 13<sup>th</sup> June 2021
- Second dose reconciliation continues, including forward notification texts and DNA follow ups across all delivery pillars
- Targeting PCN LVSs with overdue second doses (> 84 days)

# Low Uptake

- Mobile Vaccination Units – reviewing opportunities for sites in Sparkhill, Ward End and Stechford
- Pop-up sessions - UHB team to trial several days in same location and same location on same day for continuous weeks
- Joined up approach between UHB & PCN LVS with combined spreadsheet of site allocation and plans to bring under one operational team
- Pilot on 20.05.21 administering Pfizer from the Mobile Units
- SMI uptake data shared with PCN Leads and Health Inequalities Board
- Continued support from late career GPs, GP Peer Support Team, Practice Managerial Sessions to improve vaccine uptake in communities where this remains low

# Uptake by Cohort in Birmingham Residents – NIMS Data (Extracted 18/05/21)



# Priority Groups currently being called for vaccination: 1<sup>st</sup> dose

Priority	Risk group	% First Dose Uptake				
		NHS Birmingham & Solihull		NHS Sandwell & West Birmingham		Birmingham
		Total	Birmingham	Total	Birmingham	
1	Residents in a care home for older adults and staff working in care homes for older adults	N/A on NIMS				
2	All those 80 years of age and over	92.6%	91.2%	89.3%	81.1%	90.0%
	Frontline health and social care workers *	80.8%	79.4%	74.2%	66.4%	77.6%
3	All those 75 years of age and over	93.9%	92.8%	90.7%	84.0%	91.9%
4	All those 70 years of age and over	92.6%	91.3%	88.9%	80.1%	90.1%
	Clinically extremely vulnerable individuals (not including pregnant women and those under 16 years of age)	84.1%	82.5%	82.3%	73.8%	81.0%
5	All those 65 years of age and over	89.3%	87.7%	84.8%	73.7%	85.8%
	COVID At Risk	75.7%	73.1%	72.3%	58.7%	70.7%
6	All those 60 years and over	86.2%	84.1%	80.2%	67.0%	81.6%
7	All those 55 years of age and over	82.5%	80.1%	75.8%	61.1%	77.2%
8	All those 50 years of age and over	78.1%	75.3%	72.4%	58.1%	72.5%
	All those 40 years of age and over	62.8%	59.3%	55.3%	41.6%	55.9%

\* Current significant data issues in denominator definition

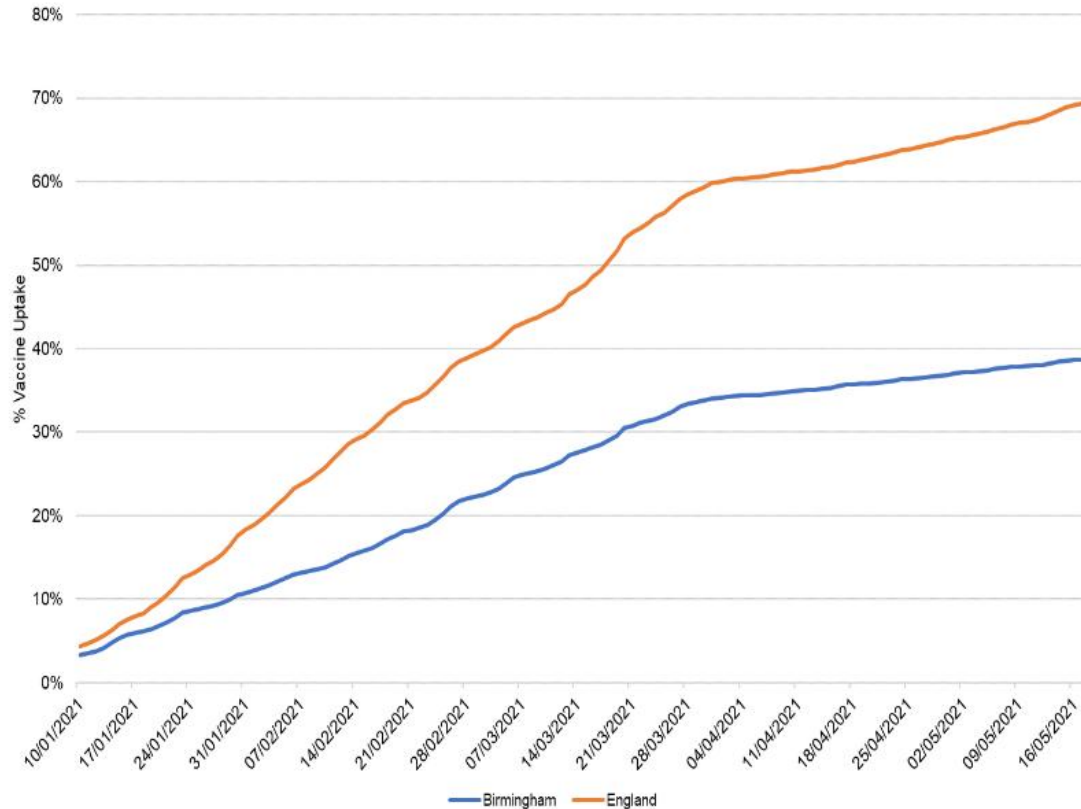
# Priority Groups currently being called for vaccination: 2<sup>nd</sup> dose

Priority	Risk group	% Second Dose Uptake				
		NHS Birmingham & Solihull		NHS Sandwell & West Birmingham		Birmingham
		Total	Birmingham	Total	Birmingham	
1	Residents in a care home for older adults and staff working in care homes for older adults	N/A on NIMS				
2	All those 80 years of age and over	88.5%	86.3%	83.8%	73.3%	84.6%
	Frontline health and social care workers *	69.8%	68.2%	60.0%	51.6%	65.7%
3	All those 75 years of age and over	90.2%	88.5%	86.4%	77.4%	87.2%
4	All those 70 years of age and over	88.1%	85.9%	83.5%	72.3%	84.3%
	Clinically extremely vulnerable individuals (not including pregnant women and those under 16 years of age)	67.3%	64.0%	63.7%	51.1%	61.3%
5	All those 65 years of age and over	77.7%	75.1%	74.4%	56.6%	72.1%
	COVID At Risk	43.4%	42.0%	38.0%	27.6%	39.0%
6	All those 60 years and over	50.2%	50.9%	37.5%	31.2%	47.0%
7	All those 55 years of age and over	34.7%	35.7%	28.7%	23.6%	33.3%
8	All those 50 years of age and over	27.1%	27.7%	24.7%	18.5%	25.8%
	All those 40 years of age and over	18.5%	18.1%	15.7%	11.3%	16.6%

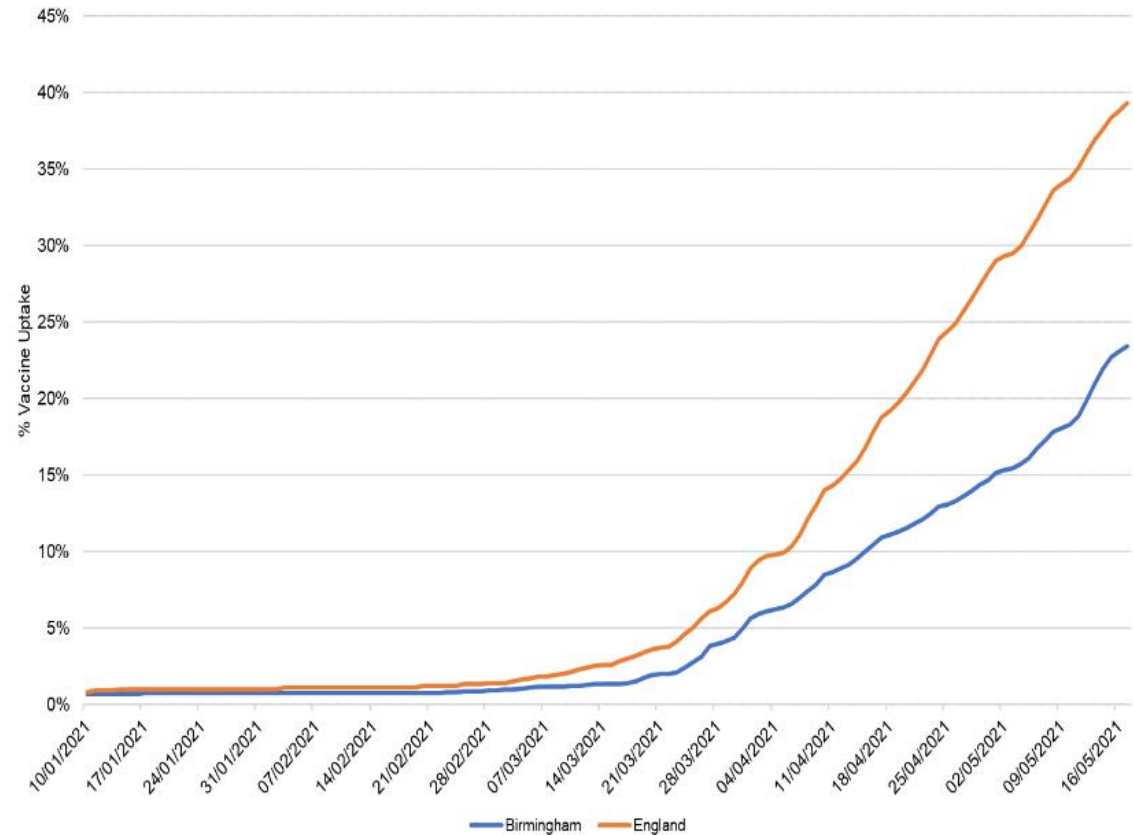
\* Current significant data issues in denominator definition

# Uptake by Date of Vaccination

1st Dose Vaccination Uptake Aged 18+ by Date



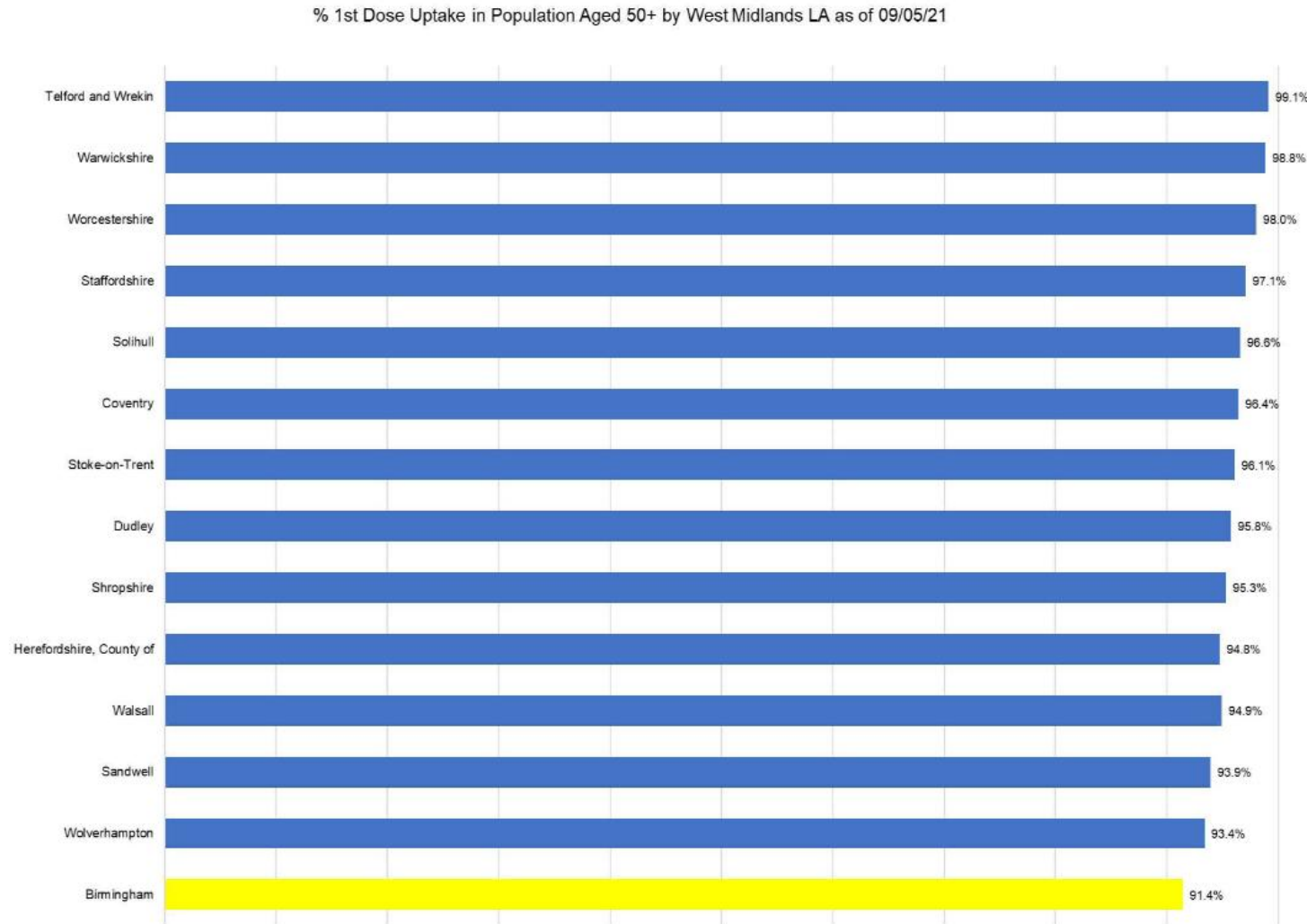
2nd Dose Vaccination Uptake Aged 18+ by Date



Uptake of 1<sup>st</sup> dose has slowed since mid March whilst uptake of 2<sup>nd</sup> dose has accelerated. The rate of uptake in Birmingham is behind the national average for 1<sup>st</sup> and 2<sup>nd</sup> doses.



# Uptake in Birmingham vs West Midlands Local Authorities



Uptake in of 1<sup>st</sup> dose in the population aged 50+ is lowest in Birmingham compared with all West Midlands local authorities.

Data Source: NHS

<https://www.england.nhs.uk/statistics/statistical-work-areas/covid-19-vaccinations/>

# Vaccine Uptake by Ward

## -40 with lowest uptake

Vaccine uptake is low in some wards that have observed the highest case rates since the start of the pandemic.

The following wards have low vaccine uptake and high case rates:

- Newtown
- Soho & Jewellery Quarter
- Aston
- Lozells
- Birchfield
- Sparkbrook & Balsall Heath East
- Small Heath
- Sparkhill
- Ward End
- Heartlands

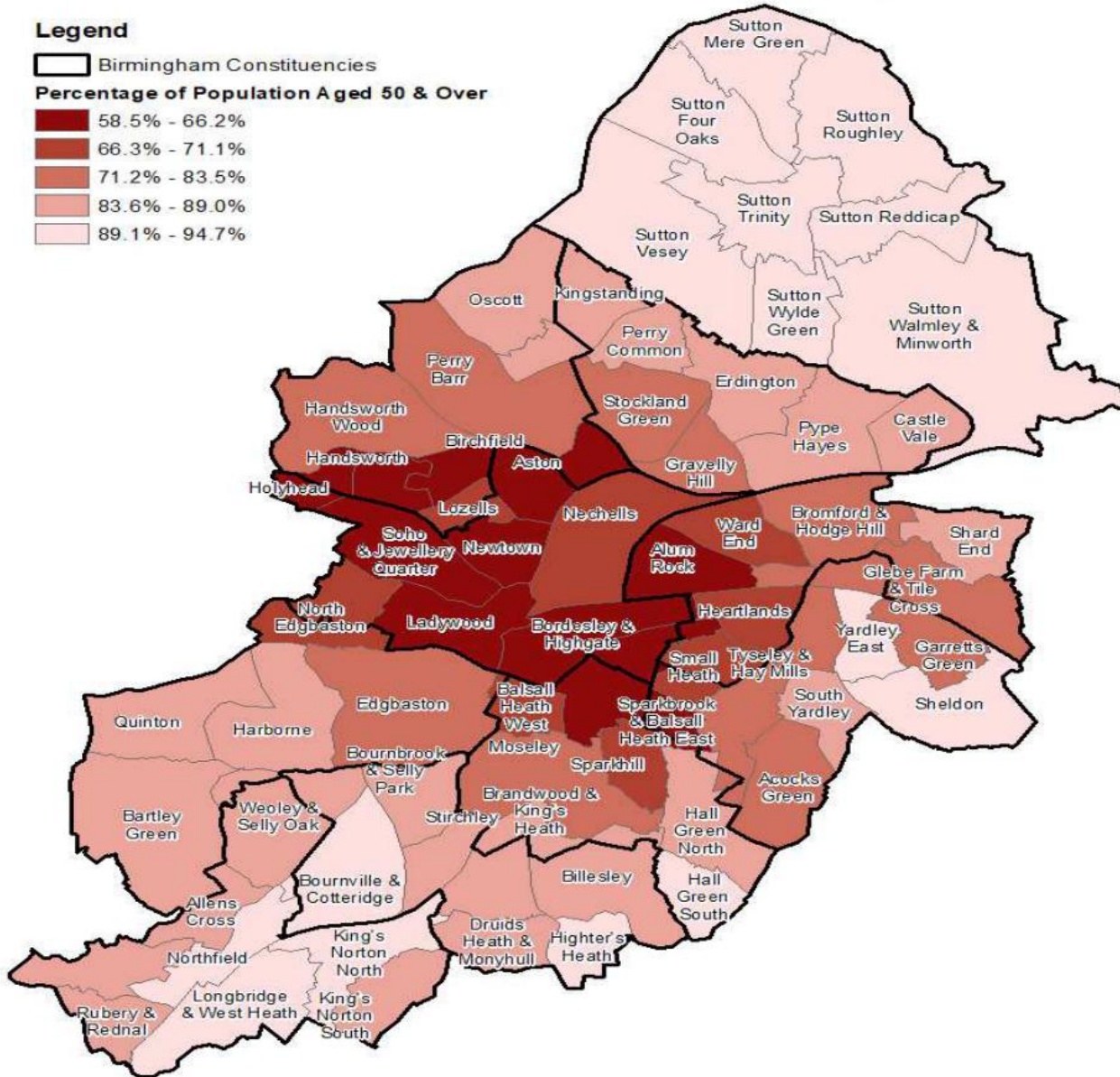
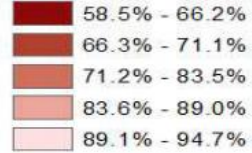
Ward Name	Total Uptake 18+	Total Uptake 50+	Case Rate
Newtown	32.1%	58.5%	9,651
Bournbrook & Selly Park	34.1%	84.7%	8,785
Ladywood	34.2%	66.2%	7,243
Soho & Jewellery Quarter	36.8%	62.1%	10,091
Bordesley & Highgate	36.6%	65.9%	7,378
Nechells	37.6%	67.1%	7,583
Holyhead	38.1%	60.8%	9,330
Alum Rock	39.6%	65.0%	10,974
Aston	40.0%	65.4%	10,641
Bordesley Green	40.8%	65.3%	9,920
Sparkbrook & Balsall Heath East	39.9%	65.9%	11,353
Birchfield	40.9%	63.9%	10,577
Lozells	42.0%	67.0%	13,365
Handsworth	42.1%	64.4%	9,502
Small Heath	43.8%	70.4%	10,889
Edgbaston	42.7%	80.6%	8,854
Sparkhill	42.1%	69.3%	11,472
Balsall Heath West	42.9%	70.4%	9,785
Ward End	44.6%	71.1%	11,008
North Edgbaston	43.8%	67.9%	9,366
Heartlands	45.9%	70.8%	11,544
Tyseley & Hay Mills	50.9%	78.5%	8,978
Gravelly Hill	51.6%	76.4%	9,029
Stockland Green	51.4%	77.7%	8,346
Bromford & Hodge Hill	54.8%	83.0%	11,467
Yardley West & Stechford	55.2%	81.8%	10,054
Perry Barr	54.8%	81.6%	9,355
Handsworth Wood	56.1%	79.5%	11,499
Glebe Farm & Tile Cross	55.8%	82.6%	9,567
Acocks Green	57.5%	83.5%	9,951
Hall Green North	56.5%	83.8%	10,770
Garretts Green	58.2%	82.5%	9,364
Weoley & Selly Oak	60.1%	85.4%	7,735
Moseley	60.0%	82.4%	8,193
Harborne	62.4%	84.4%	6,188
Erdington	62.0%	85.3%	8,361
Kingstanding	63.2%	84.8%	8,593
Stirchley	63.0%	86.9%	7,245
King's Norton South	62.6%	86.2%	7,488
Pype Hayes	63.8%	85.6%	9,088

## Birmingham Percentage Uptake of 1st Dose of COVID-19 Vaccine for Population Aged 50 & Over by Ward

### Legend

□ Birmingham Constituencies

### Percentage of Population Aged 50 & Over



Uptake is lowest in central and western wards within Birmingham.

These are the wards with highest deprivation and highest proportion of BME population



# North Locality

	% uptake of 1st Dose of Covid Vaccination data extracted 18/05											
Ward Name	Over 80yr olds	75-79yrs	70-74yrs	65-69yrs	60-64yrs	55-59yrs	50-54yrs	40-49yrs	CEV	COVID at Risk	Carers - LA	Carers - DWP
Castle Vale	91.8%	94.6%	93.3%	92.3%	86.9%	83.5%	80.5%	65.5%	88.4%	79.6%	76.7%	67.8%
Erdington	93.2%	94.5%	91.6%	88.8%	83.4%	79.0%	77.0%	62.1%	86.6%	77.3%	77.4%	66.3%
Gravelly Hill	87.7%	89.6%	87.3%	81.7%	74.8%	71.6%	66.8%	49.7%	79.8%	67.5%	73.1%	66.3%
Kingstanding	88.8%	93.7%	90.2%	89.5%	84.3%	81.9%	77.0%	66.5%	86.6%	76.3%	76.4%	72.7%
Perry Common	91.5%	93.4%	89.9%	89.7%	85.8%	80.4%	78.0%	63.1%	84.6%	74.5%	77.3%	71.4%
Pype Hayes	91.7%	93.6%	91.3%	88.4%	86.9%	81.7%	78.1%	63.9%	87.9%	77.6%	74.8%	67.3%
Stockland Green	87.7%	88.6%	87.8%	83.4%	78.5%	72.4%	67.6%	51.4%	80.4%	68.6%	74.2%	64.6%
Sutton Four Oaks	95.8%	97.6%	96.0%	95.4%	92.7%	94.0%	92.5%	83.6%	96.8%	90.3%	84.8%	83.9%
Sutton Mere Green	97.1%	97.8%	95.9%	95.6%	91.7%	91.5%	91.9%	84.1%	94.1%	89.0%	88.5%	84.6%
Sutton Reddicap	93.7%	97.5%	94.5%	91.3%	90.4%	86.9%	86.2%	76.4%	92.3%	83.4%	84.8%	67.2%
Sutton Roughley	95.8%	96.8%	96.2%	95.0%	92.9%	93.0%	90.3%	82.6%	94.6%	90.6%	89.6%	78.6%
Sutton Trinity	96.9%	94.1%	95.6%	94.2%	92.3%	88.8%	88.7%	80.1%	94.3%	88.3%	89.5%	75.8%
Sutton Vesey	95.6%	95.5%	96.4%	93.5%	91.0%	88.1%	86.5%	81.4%	93.3%	86.5%	86.7%	77.3%
Sutton Walmley & Minworth	94.9%	95.6%	96.6%	95.0%	93.0%	89.6%	88.3%	80.7%	93.6%	88.9%	83.8%	79.1%
Sutton Wylde Green	96.8%	95.8%	95.7%	94.0%	92.4%	90.0%	89.2%	80.9%	94.3%	87.9%	93.3%	88.9%

# East Locality

	% uptake of 1st Dose of Covid Vaccination data extracted 18/05											
Ward Name	Over 80yr olds	75-79yrs	70-74yrs	65-69yrs	60-64yrs	55-59yrs	50-54yrs	40-49yrs	CEV	COVID at Risk	Carers - LA	Carers - DWP
Acocks Green	91.9%	91.6%	89.9%	85.2%	82.9%	80.4%	75.6%	57.1%	83.6%	73.6%	71.5%	68.8%
Alum Rock	70.0%	75.4%	76.6%	69.7%	68.8%	60.7%	56.5%	39.7%	67.7%	54.7%	64.3%	54.6%
Bromford & Hodge Hill	93.2%	93.2%	91.0%	87.3%	82.4%	78.8%	71.0%	53.8%	79.1%	68.8%	69.3%	62.3%
Garretts Green	89.5%	92.1%	90.6%	82.8%	80.2%	79.6%	76.0%	59.9%	82.7%	71.5%	71.0%	65.6%
Glebe Farm & Tile Cross	90.9%	91.9%	89.2%	88.3%	81.8%	78.5%	73.0%	55.6%	77.6%	69.6%	69.0%	62.7%
Heartlands	80.9%	83.2%	79.9%	76.3%	69.9%	63.3%	65.0%	48.1%	73.2%	61.3%	71.1%	56.7%
Shard End	93.3%	94.0%	94.6%	90.4%	90.0%	83.2%	81.5%	63.8%	87.6%	77.7%	70.7%	67.1%
Sheldon	93.9%	96.1%	94.2%	93.0%	89.3%	86.3%	83.9%	70.6%	86.6%	80.8%	77.1%	70.4%
Small Heath	77.1%	82.0%	78.8%	77.5%	74.7%	62.6%	62.7%	44.1%	74.9%	60.9%	64.6%	61.9%
South Yardley	92.3%	94.0%	91.3%	90.0%	87.6%	84.7%	80.8%	68.0%	83.5%	79.8%	85.4%	75.9%
Tyseley & Hay Mills	84.4%	86.6%	85.9%	82.3%	80.6%	77.5%	68.6%	50.4%	80.8%	68.5%	67.1%	65.1%
Ward End	83.5%	83.4%	75.9%	79.3%	72.3%	65.2%	62.4%	44.6%	71.1%	60.6%	60.4%	57.3%
Yardley East	94.3%	95.2%	95.1%	90.9%	90.9%	84.8%	82.5%	63.1%	87.0%	77.4%	77.2%	73.0%
Yardley West & Stechford	89.2%	91.5%	89.4%	86.0%	85.8%	76.8%	70.2%	55.5%	80.4%	69.5%	70.0%	66.9%

# South Locality

Ward Name	% uptake of 1st Dose of Covid Vaccination data extracted 18/05										Carers - LA	Carers - DWP
	Over 80yr olds	75-79yrs	70-74yrs	65-69yrs	60-64yrs	55-59yrs	50-54yrs	40-49yrs	CEV	COVID at Risk		
Allens Cross	94.9%	94.4%	93.0%	91.3%	87.9%	82.0%	79.1%	66.1%	88.8%	80.6%	82.4%	66.2%
Bartley Green	91.6%	95.2%	93.9%	88.9%	86.4%	82.7%	78.2%	62.0%	85.1%	76.4%	79.0%	70.6%
Edgbaston	88.9%	89.0%	89.8%	83.4%	75.6%	75.4%	70.2%	43.4%	83.3%	71.9%	77.4%	55.4%
Frankley Great Park	94.7%	96.4%	95.2%	90.9%	90.6%	84.7%	79.4%	71.2%	86.4%	78.1%	77.6%	65.4%
Harborne	92.2%	92.0%	91.3%	88.3%	82.0%	80.3%	73.6%	60.2%	85.9%	77.5%	82.3%	64.8%
King's Norton North	95.2%	94.6%	94.6%	91.2%	89.4%	87.2%	83.1%	68.3%	89.3%	81.6%	81.9%	63.8%
King's Norton South	95.0%	93.7%	92.4%	87.3%	85.4%	81.7%	76.8%	62.7%	86.0%	73.7%	73.5%	60.7%
Longbridge & West Heath	96.2%	95.1%	94.5%	92.1%	89.6%	87.1%	83.6%	71.7%	90.9%	78.4%	84.1%	67.7%
Northfield	95.9%	97.9%	96.5%	90.5%	91.3%	89.8%	85.1%	75.0%	90.5%	83.3%	85.6%	72.5%
Quinton	93.0%	93.9%	91.8%	89.3%	87.9%	84.5%	81.2%	65.7%	87.6%	79.4%	79.9%	71.0%
Rubery & Rednal	94.1%	97.3%	94.5%	90.6%	88.4%	85.9%	82.6%	68.8%	88.8%	78.3%	79.3%	64.0%
Weoley & Selly Oak	94.9%	93.6%	91.2%	87.3%	83.8%	81.1%	75.0%	56.0%	86.3%	75.2%	76.4%	65.7%



# West Locality

	% uptake of 1st Dose of Covid Vaccination data extracted 18/05											
Ward Name	Over 80yr olds	75-79yrs	70-74yrs	65-69yrs	60-64yrs	55-59yrs	50-54yrs	40-49yrs	CEV	COVID at Risk	Carers - LA	Carers - DWP
Aston	75.8%	80.2%	73.5%	71.9%	66.0%	57.8%	58.1%	40.0%	73.7%	57.3%	63.5%	59.0%
Birchfield	74.1%	80.8%	80.0%	70.8%	61.2%	56.7%	56.4%	37.0%	70.9%	54.7%	61.5%	57.1%
Bordesley & Highgate	75.5%	78.6%	80.1%	67.9%	67.1%	62.0%	59.0%	43.4%	68.5%	53.7%	60.8%	54.1%
Bordesley Green	77.0%	75.6%	75.8%	71.1%	67.7%	58.3%	57.2%	41.1%	69.6%	57.6%	59.4%	57.9%
Handsworth	74.5%	84.5%	81.4%	74.1%	61.1%	55.5%	56.5%	42.0%	76.2%	57.7%	60.3%	59.0%
Handsworth Wood	88.5%	87.6%	87.3%	86.3%	77.5%	74.7%	70.1%	52.6%	82.1%	68.6%	71.2%	64.6%
Holyhead	79.6%	78.8%	71.0%	66.1%	62.1%	54.8%	49.0%	36.2%	73.5%	55.7%	59.8%	48.4%
Ladywood	80.2%	77.5%	75.1%	68.8%	67.1%	63.4%	58.5%	42.7%	71.0%	60.5%	58.9%	53.8%
Lozells	77.9%	77.4%	80.8%	72.7%	62.2%	62.2%	61.8%	46.2%	76.9%	54.6%	64.1%	66.2%
Nechells	77.4%	82.3%	85.5%	72.3%	68.3%	61.7%	54.8%	45.9%	70.5%	58.6%	60.2%	60.2%
Newtown	75.1%	76.4%	68.2%	61.8%	56.4%	53.5%	51.6%	37.1%	63.3%	46.7%	51.5%	54.6%
North Edgbaston	78.4%	87.0%	83.1%	76.4%	67.0%	61.7%	56.0%	43.4%	73.8%	61.8%	60.2%	56.5%
Oscott	90.9%	93.8%	90.4%	83.8%	81.7%	75.1%	71.5%	54.8%	82.1%	69.9%	70.2%	65.8%
Perry Barr	76.5%	79.6%	74.9%	67.8%	63.0%	54.6%	53.7%	39.3%	71.0%	55.1%	62.7%	55.1%
Soho & Jewellery Quarter	76.5%	79.9%	74.9%	67.3%	63.6%	54.6%	53.4%	36.2%	70.9%	54.6%	62.0%	54.6%

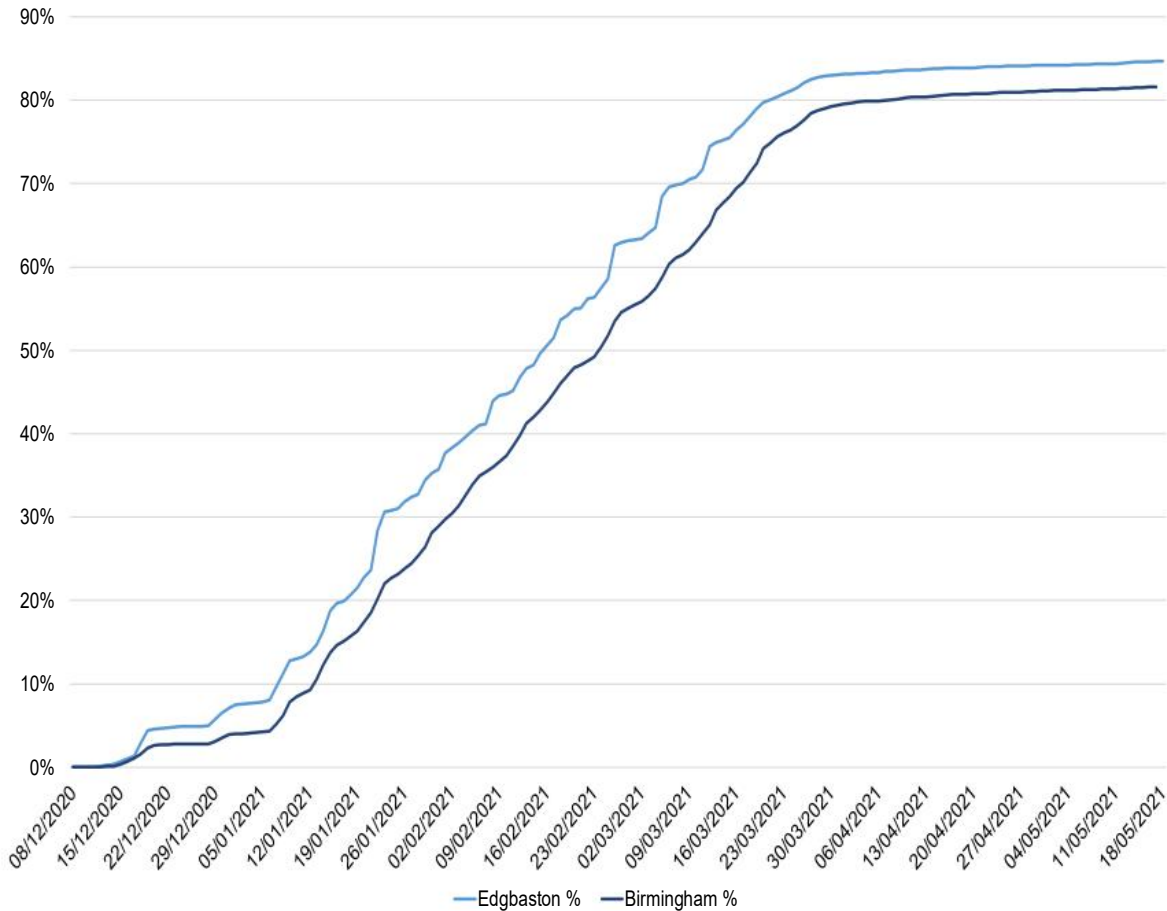
# Central Locality

	% uptake of 1st Dose of Covid Vaccination data extracted 18/05											
Ward Name	Over 80yr olds	75-79yrs	70-74yrs	65-69yrs	60-64yrs	55-59yrs	50-54yrs	40-49yrs	CEV	COVID at Risk	Carers - LA	Carers - DWP
Balsall Heath West	93.4%	94.4%	93.4%	91.9%	82.8%	81.7%	69.5%	38.4%	85.3%	74.7%	71.0%	64.7%
Billesley	94.1%	96.3%	95.0%	91.1%	90.9%	84.9%	83.2%	71.1%	90.0%	83.4%	79.6%	66.7%
Bournbrook & Selly Park	93.5%	93.0%	91.3%	90.8%	86.0%	85.9%	81.8%	70.1%	87.5%	79.6%	82.6%	69.3%
Bournville & Cotteridge	95.9%	92.1%	92.2%	90.8%	89.4%	81.5%	80.9%	69.1%	89.0%	74.8%	83.0%	67.0%
Brandwood & King's Heath	89.9%	92.0%	93.5%	88.7%	83.2%	81.2%	72.9%	59.1%	82.5%	68.9%	68.7%	65.0%
Druids Heath & Monyhull	94.8%	96.2%	96.6%	92.6%	90.1%	88.9%	84.2%	74.4%	89.1%	82.2%	86.5%	81.8%
Hall Green North	92.6%	95.2%	92.6%	93.2%	89.2%	88.6%	86.7%	71.2%	89.6%	81.4%	79.8%	68.7%
Hall Green South	90.6%	91.4%	89.7%	87.8%	81.6%	76.8%	72.1%	60.4%	82.2%	70.7%	69.2%	61.6%
Highters Heath	72.9%	77.7%	76.1%	74.1%	68.0%	61.2%	55.7%	39.5%	70.1%	51.1%	57.4%	52.8%
Moseley	81.1%	81.1%	76.1%	76.5%	68.6%	65.4%	58.6%	42.2%	72.4%	56.1%	63.6%	58.7%
Sparkbrook & Balsall Heath East	92.7%	94.5%	90.8%	88.5%	88.6%	82.3%	81.9%	67.1%	88.3%	78.0%	79.6%	68.6%
Sparkhill	81.8%	79.5%	77.7%	76.0%	69.0%	65.7%	58.6%	41.6%	72.4%	55.9%	63.6%	58.7%
Stirchley	92.2%	94.8%	90.9%	89.7%	87.5%	82.4%	81.9%	66.5%	88.2%	77.5%	79.6%	68.2%

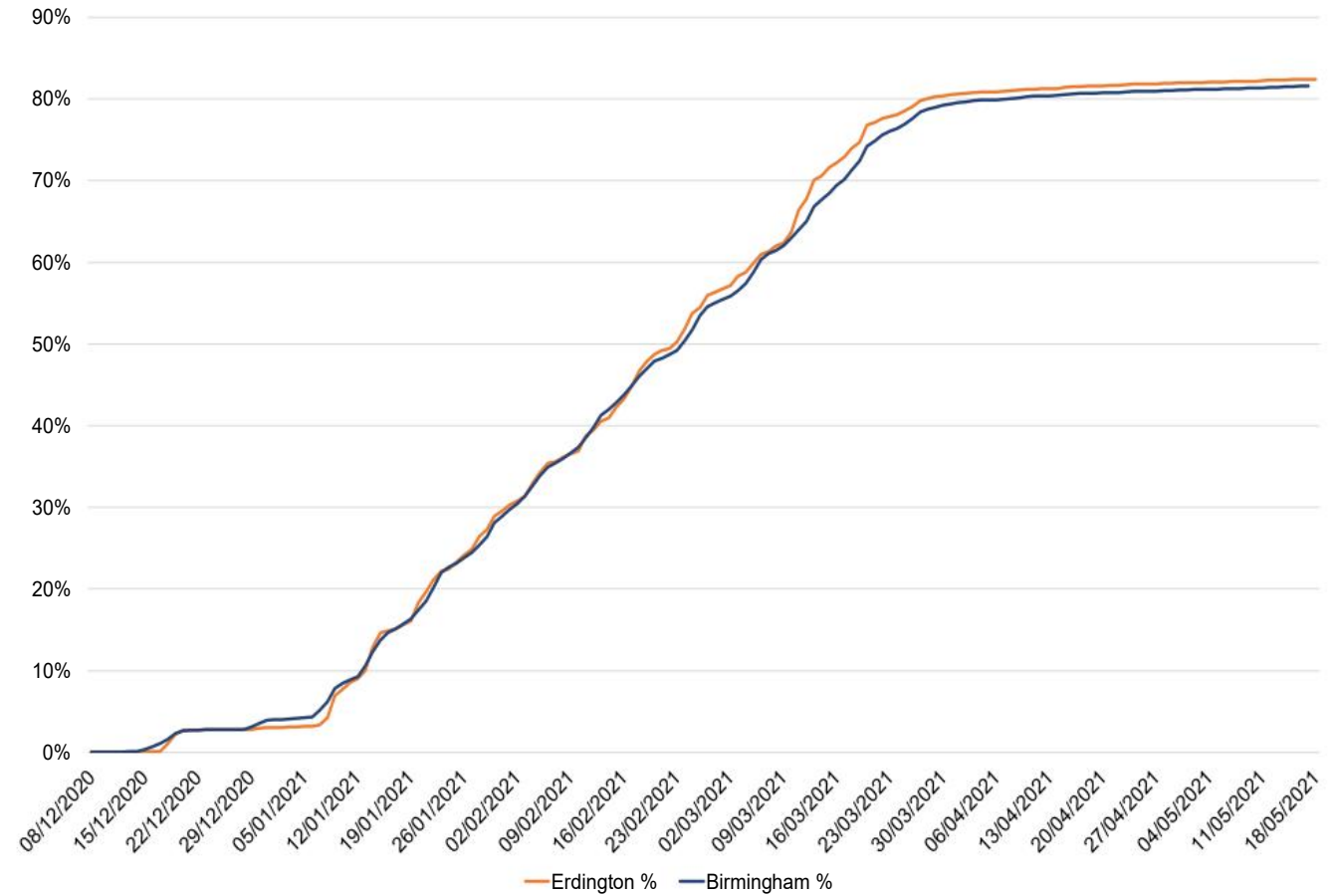


# Uptake Progress by Constituency

Covid Vaccination % 1st Dose Uptake by Constituency in Age 50+ Population

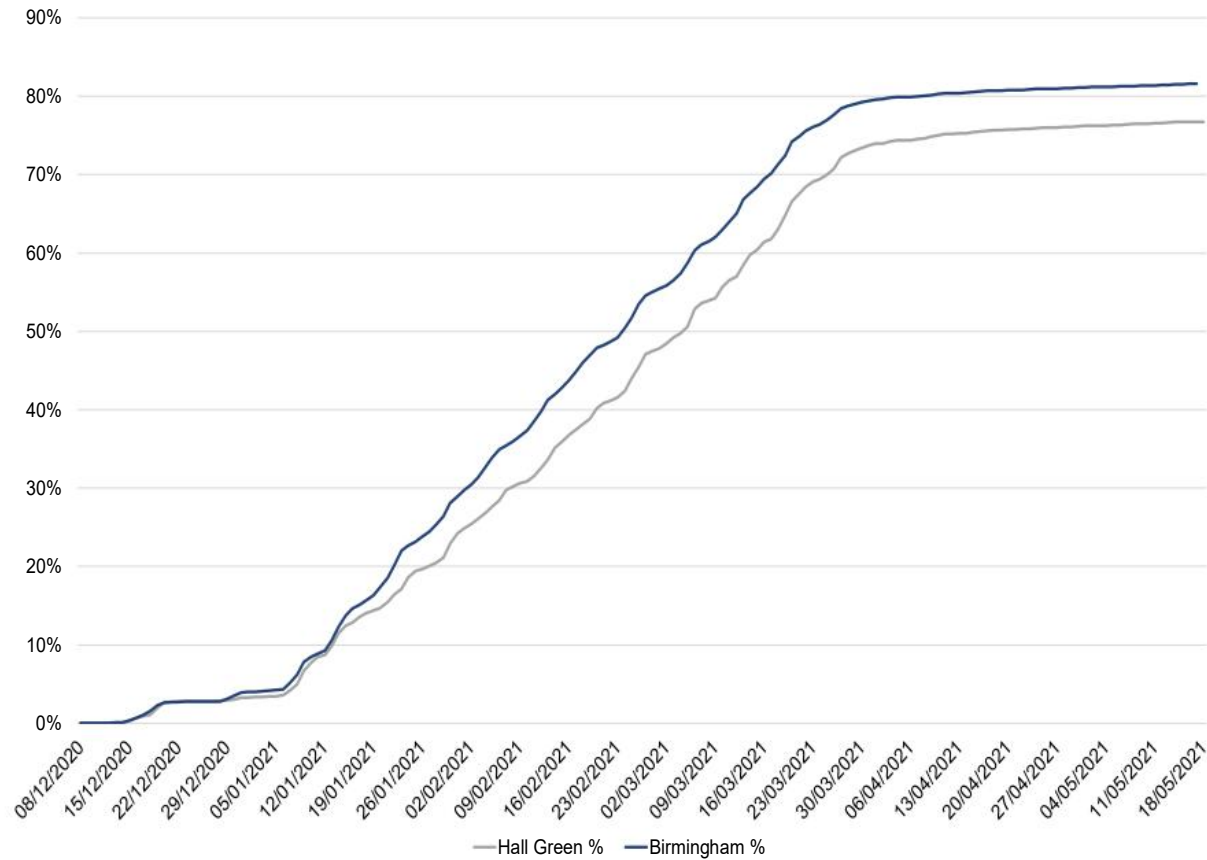


Covid Vaccination % 1st Dose Uptake by Constituency in Age 50+ Population

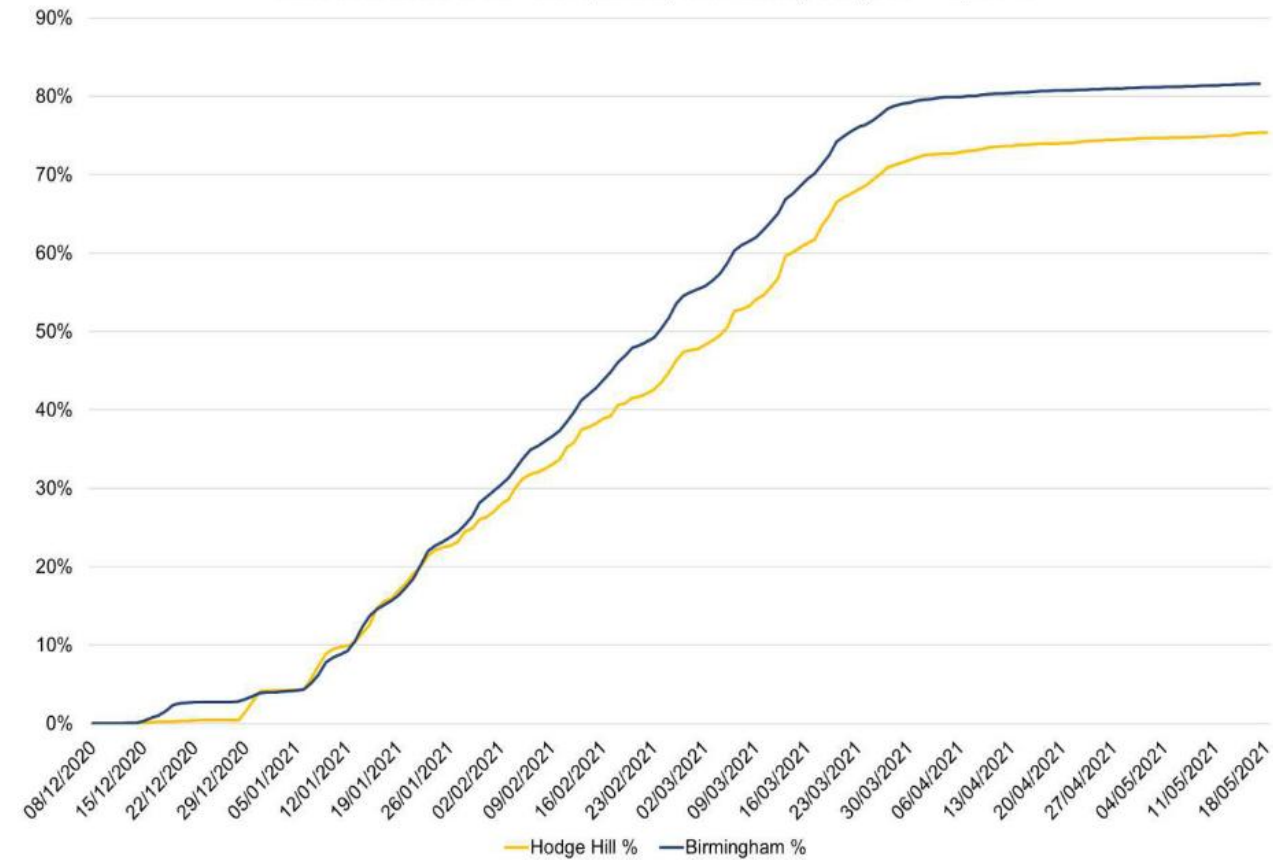


# Uptake Progress by Constituency

Covid Vaccination % 1st Dose Uptake by Constituency in Age 50+ Population

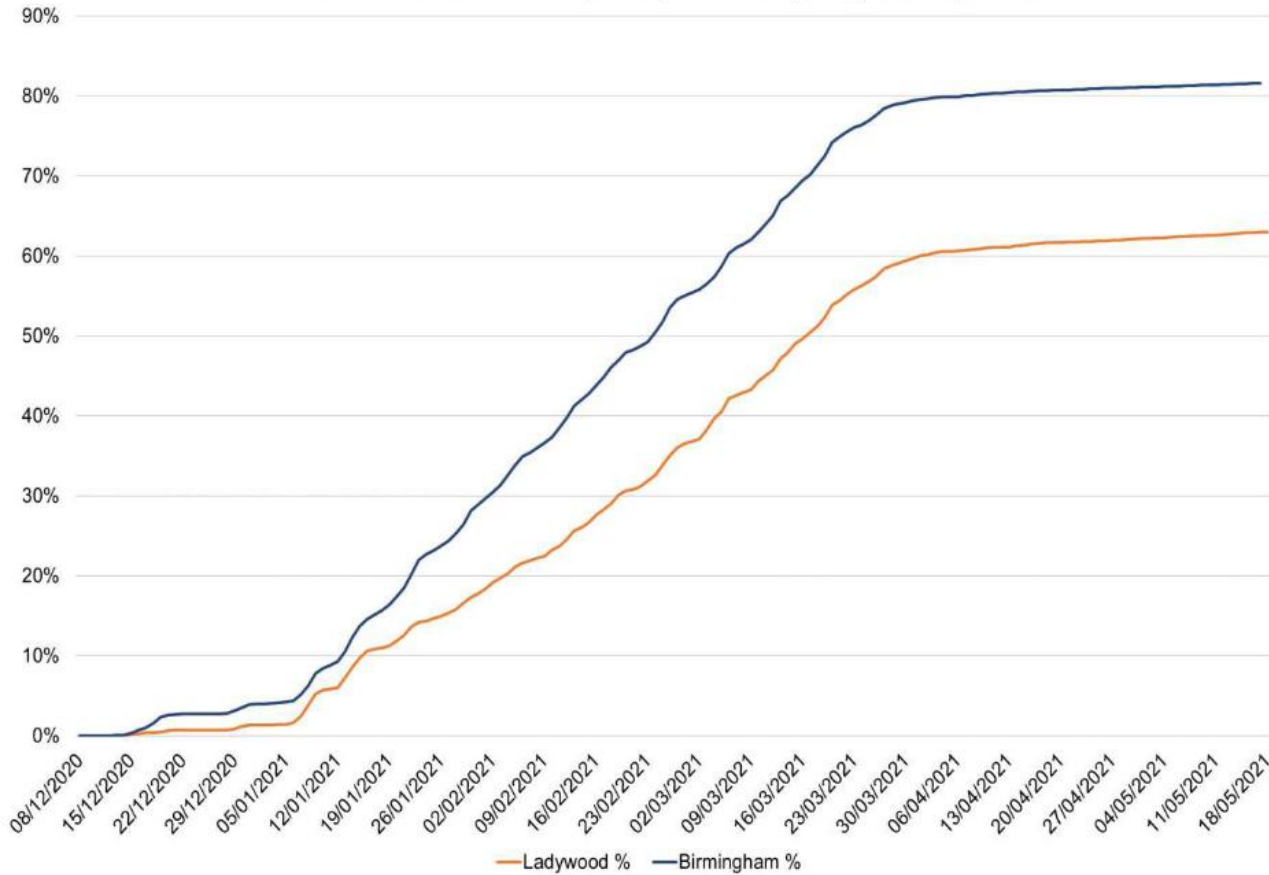


Covid Vaccination % 1st Dose Uptake by Constituency in Age 50+ Population

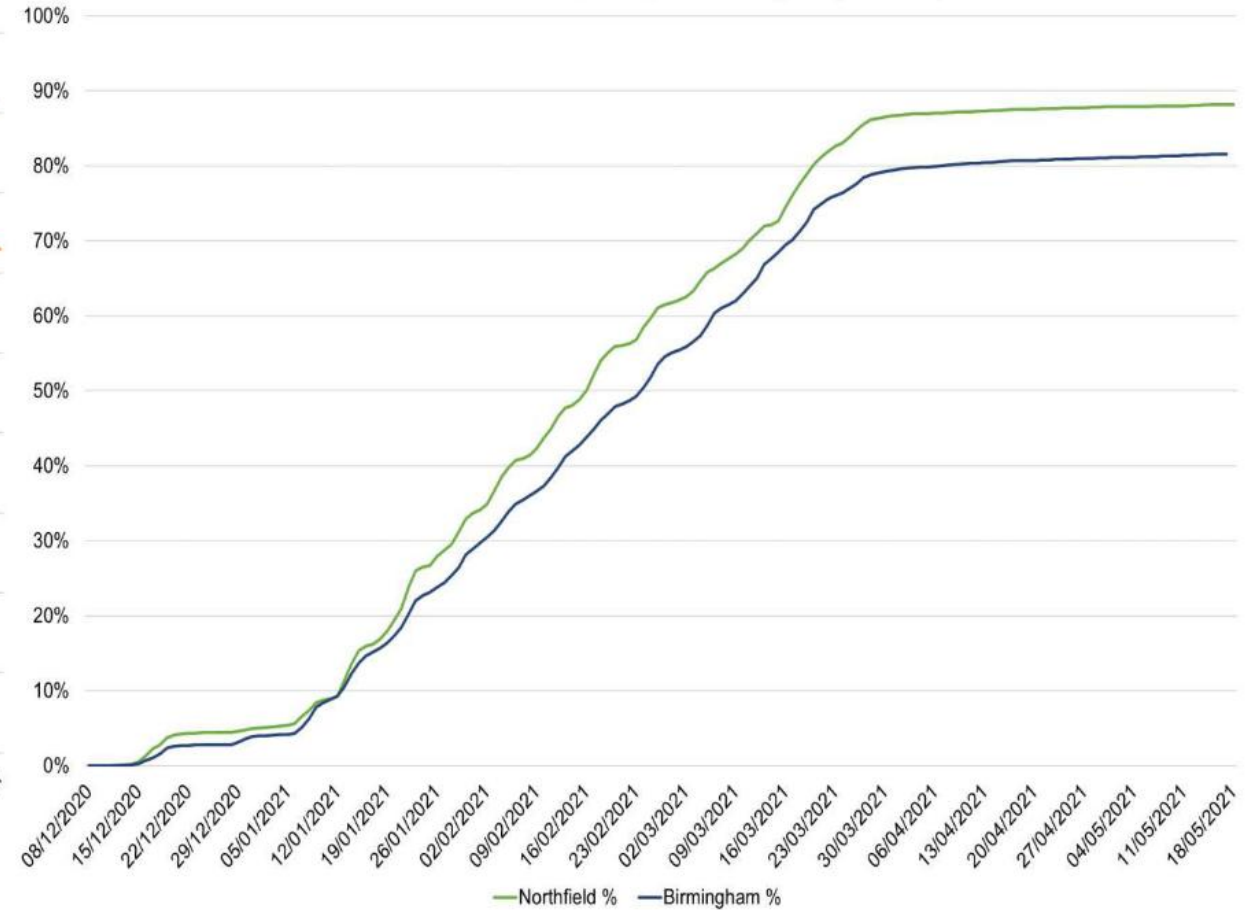


# Uptake Progress by Constituency

Covid Vaccination % 1st Dose Uptake by Constituency in Age 50+ Population

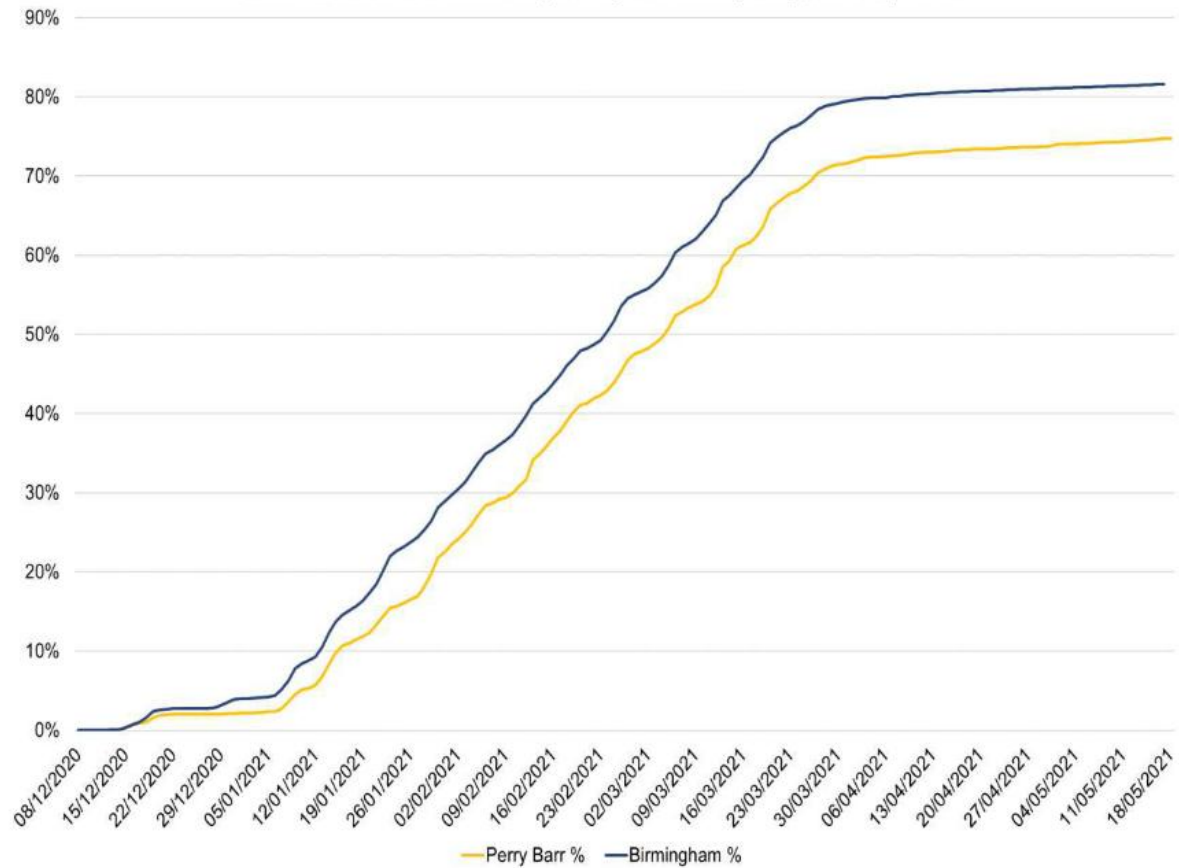


Covid Vaccination % 1st Dose Uptake by Constituency in Age 50+ Population

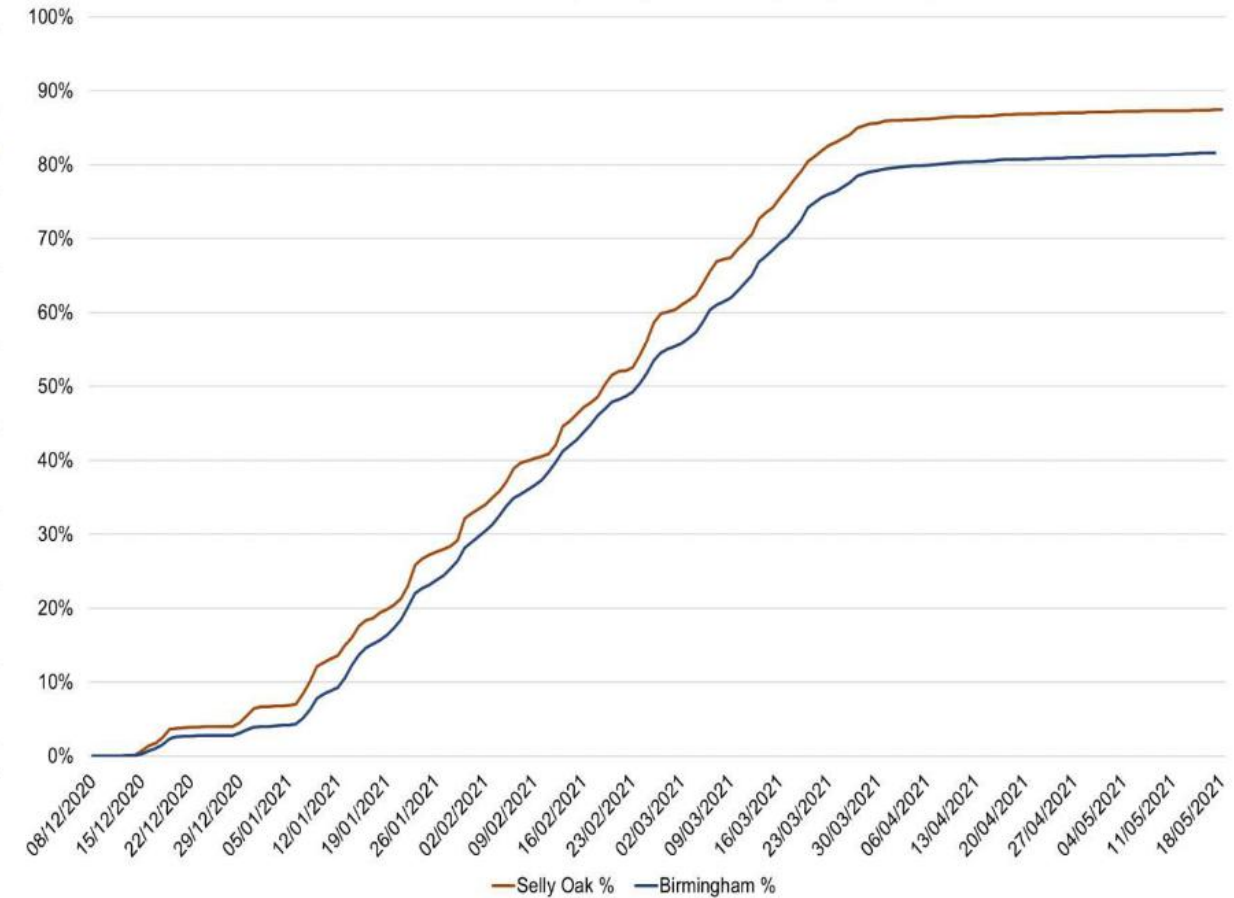


# Uptake Progress by Constituency

Covid Vaccination % 1st Dose Uptake by Constituency in Age 50+ Population



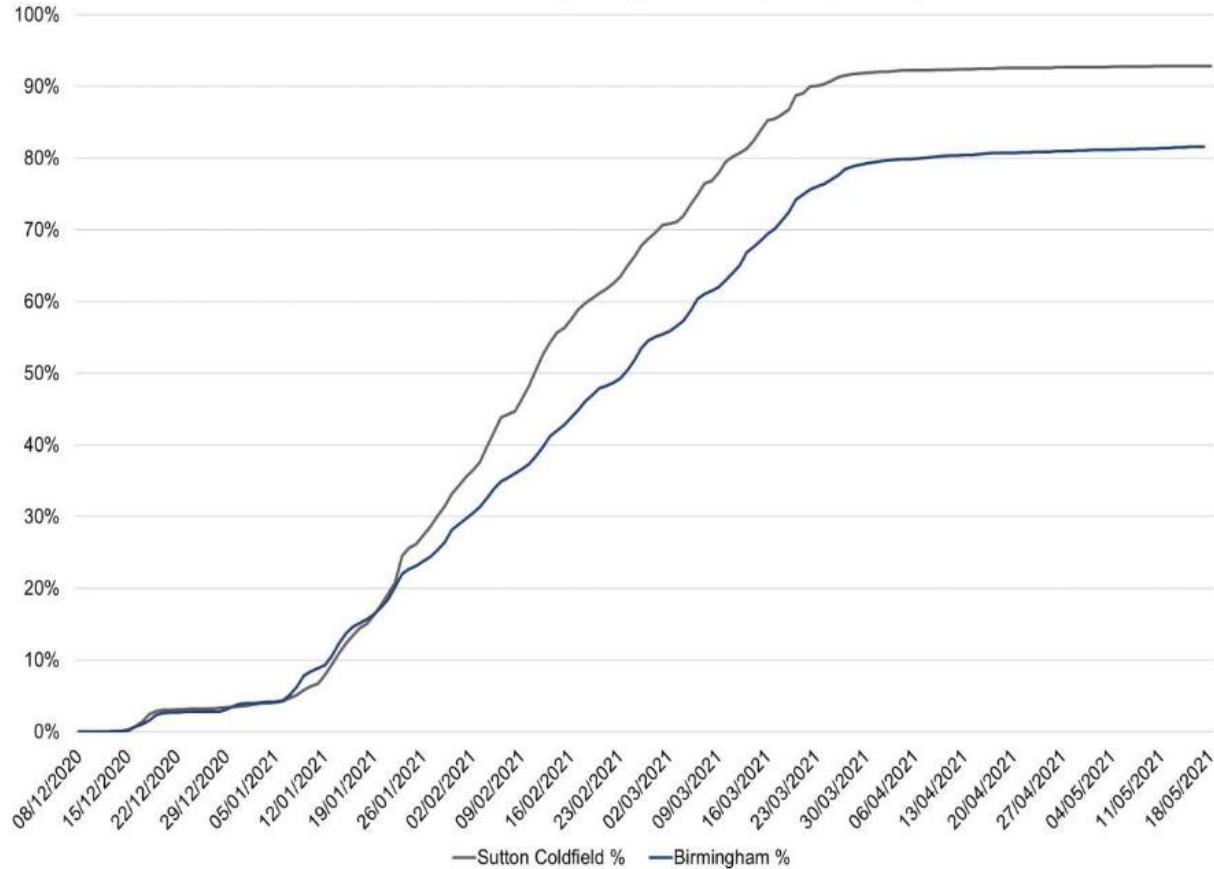
Covid Vaccination % 1st Dose Uptake by Constituency in Age 50+ Population



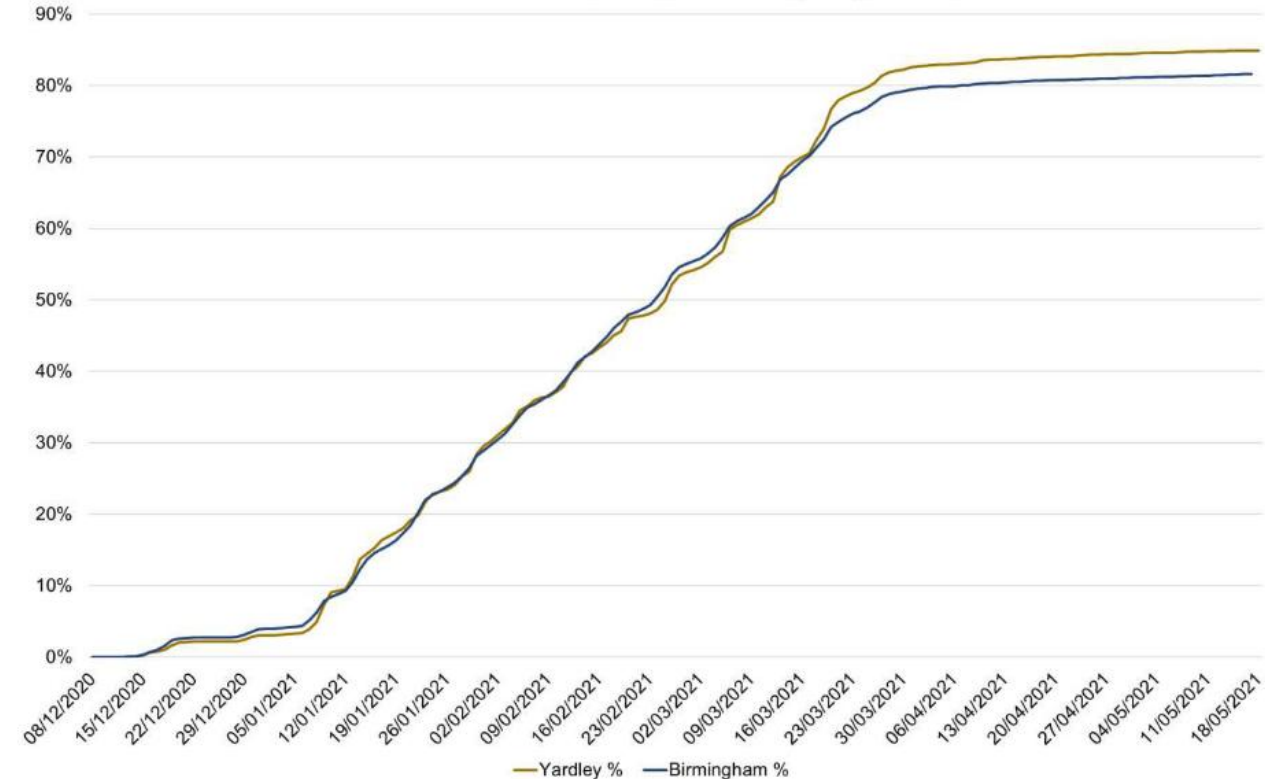


# Uptake Progress by Constituency

Covid Vaccination % 1st Dose Uptake by Constituency in Age 50+ Population



Covid Vaccination % 1st Dose Uptake by Constituency in Age 50+ Population



## Demographics of uptake: Deprivation (extract 18/05/2021)

Uptake of vaccine by deprivation shows lower uptake in more deprived communities than in more affluent communities.

This data is for Birmingham and Solihull CCG and Sandwell and West Birmingham CCG only.

IMD Deprivation Quintile	% uptake of 1st Dose of Covid Vaccination data extracted 18/05										
	Over 80yr olds	75-79yrs	70-74yrs	65-69yrs	60-64yrs	55-59yrs	50-54yrs	CEV	COVID At Risk	Carers - LA	Carers - DWP
Deprived (DQ1)	87.2%	89.8%	87.8%	83.2%	79.0%	74.0%	69.6%	79.7%	68.9%	69.0%	64.5%
Moderately Deprived (DQ2)	92.9%	93.3%	92.3%	88.9%	85.9%	82.3%	78.6%	86.9%	77.9%	78.3%	70.9%
Average (DQ3)	94.8%	95.3%	94.6%	92.8%	89.7%	87.5%	84.4%	90.4%	82.4%	84.2%	75.6%
Moderately Affluent (DQ4)	95.8%	95.6%	95.5%	93.6%	91.4%	89.7%	86.8%	93.1%	87.0%	89.1%	81.3%
Affluent (DQ5)	96.8%	97.1%	96.3%	95.4%	94.0%	92.4%	90.6%	96.0%	90.5%	91.5%	83.4%

## Demographics of uptake: Gender (extract 18/05/2021)

Uptake of vaccine is similar in both genders.

This data is for Birmingham and Solihull CCG and Sandwell and West Birmingham CCG only.

Gender	% uptake of 1st Dose of Covid Vaccination data extracted 18/05										
	Over 80yr olds	75-79yrs	70-74yrs	65-69yrs	60-64yrs	55-59yrs	50-54yrs	CEV	COVID At Risk	Carers - LA	Carers - DWP
Female	92.0%	93.2%	91.8%	88.9%	86.2%	83.1%	80.2%	0.0%	100.0%	0.0%	67.8%
Male	91.4%	92.8%	91.5%	87.3%	82.8%	78.1%	73.0%	82.3%	75.3%	75.2%	65.9%

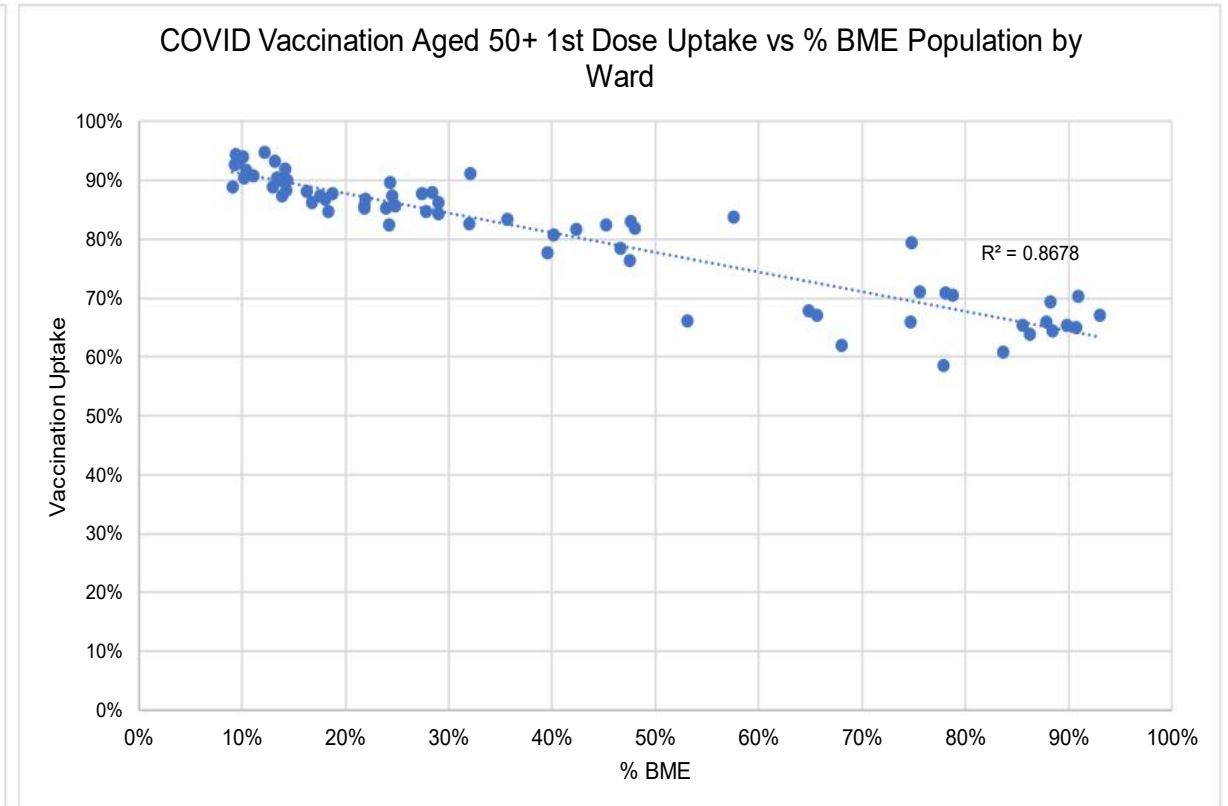
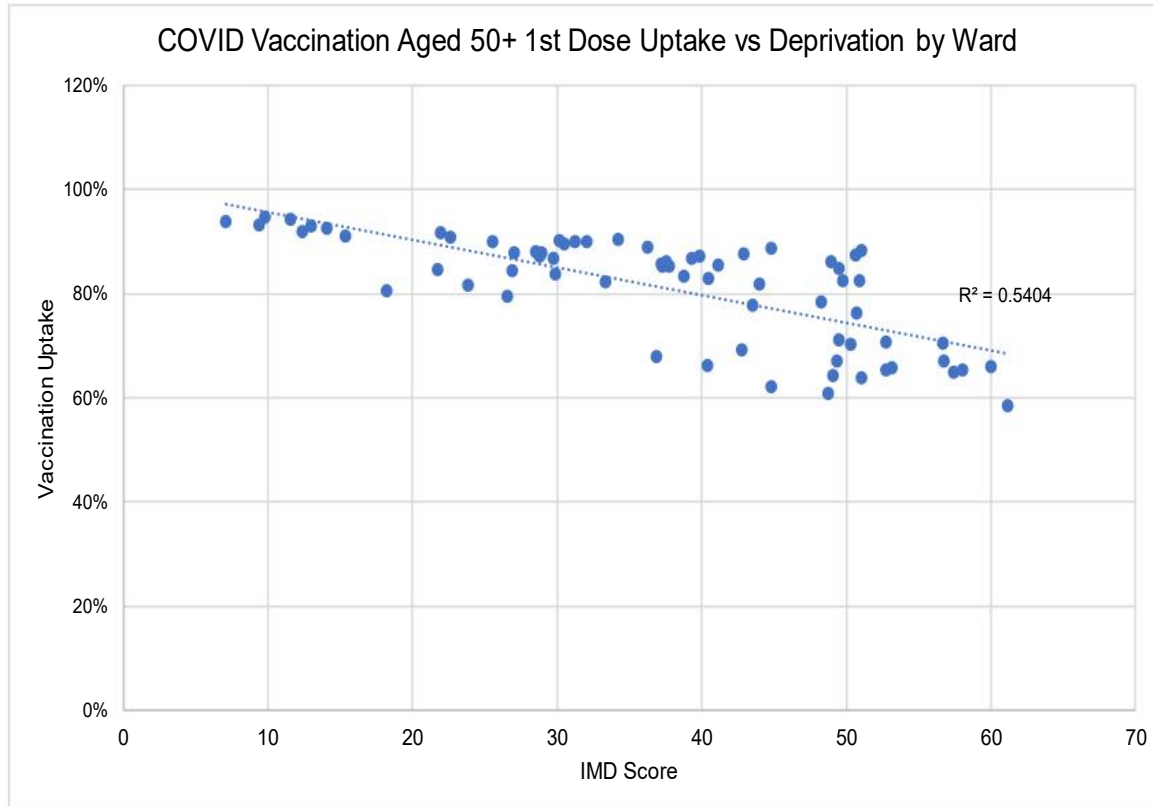
# Demographics of uptake: Ethnicity

(extract 11/04)

Across the priority groups uptake of vaccine is lower in African, Caribbean and Black communities and then Pakistani and Bangladeshi communities, but there is a significant difference in the size of different ethnic groups in different priority groups e.g. the total eligible population of >80yrs from a Pakistani ethnic group is 3,526 compared to 396 from African ethnic groups. This data is just for Birmingham & Solihull and Sandwell & West Birmingham CCGs.

Ethnic Group	% uptake of 1st Dose of Covid Vaccination data extracted 18/05										
	Over 80yr olds	75-79yrs	70-74yrs	65-69yrs	60-64yrs	55-59yrs	50-54yrs	CEV	COVID At Risk	Carers - LA	Carers - DWP
Not recorded	69.7%	78.5%	77.4%	70.2%	62.4%	56.2%	51.0%	78.3%	63.5%	68.8%	55.4%
African	66.5%	66.9%	64.9%	67.3%	66.5%	62.1%	60.7%	65.8%	54.1%	54.6%	50.7%
Any other Asian background	81.1%	83.6%	83.9%	81.7%	78.8%	74.1%	71.5%	76.2%	68.3%	62.6%	61.2%
Any other Black background	73.8%	65.8%	68.7%	64.2%	60.7%	56.8%	54.4%	60.3%	48.6%	55.9%	41.3%
Any other ethnic group	75.2%	81.1%	73.3%	72.3%	68.8%	65.1%	62.9%	67.2%	56.7%	64.4%	54.9%
Any other mixed background	82.5%	84.8%	74.0%	75.9%	71.7%	70.1%	66.4%	71.2%	53.6%	54.9%	43.8%
Any other White background	93.5%	91.4%	88.8%	80.8%	75.3%	73.0%	66.8%	79.9%	65.1%	77.0%	61.6%
Arab	81.1%	55.0%	71.4%	69.6%	58.0%	63.4%	50.0%	52.0%	53.0%	44.4%	53.1%
Bangladeshi or British Bangladeshi	80.1%	78.8%	85.0%	84.8%	84.5%	84.0%	81.8%	83.3%	72.9%	70.5%	73.9%
British, Mixed British	96.6%	96.8%	96.3%	94.8%	93.1%	91.1%	89.0%	93.1%	84.5%	84.5%	75.2%
Caribbean	75.1%	76.0%	70.2%	65.0%	60.4%	54.4%	51.1%	64.9%	48.8%	48.0%	35.6%
Chinese	83.7%	71.8%	69.1%	71.1%	70.0%	72.6%	72.9%	82.7%	71.8%	84.8%	86.4%
Indian or British Indian	90.5%	90.2%	89.5%	89.7%	88.5%	85.6%	82.7%	89.2%	81.8%	81.5%	79.1%
Irish	94.6%	95.2%	92.2%	91.9%	87.8%	84.7%	82.6%	93.2%	79.4%	86.8%	68.8%
Pakistani or British Pakistani	78.4%	80.4%	79.5%	76.7%	75.8%	71.2%	67.6%	71.7%	59.6%	60.4%	59.1%
Traveller	0.0%	0.0%	0.0%	0.0%	6.7%	16.7%	25.0%	11.8%	10.0%	0.0%	0.0%
White and Asian	80.6%	80.6%	80.8%	80.0%	83.9%	81.7%	77.1%	73.2%	67.8%	60.0%	63.2%
White and Black African	71.1%	75.0%	58.0%	59.5%	71.6%	59.4%	63.3%	69.6%	56.4%	61.5%	40.7%
White and Black Caribbean	74.3%	75.2%	74.8%	70.6%	68.0%	62.7%	60.4%	65.2%	49.3%	40.6%	34.0%

# Demographics of uptake: Relationship between Deprivation, BME Population & Uptake



A strong relationship between % BME population vs 1<sup>st</sup> dose uptake and a moderate relationship between deprivation vs 1<sup>st</sup> dose uptake are observed.