

	<b><u>Agenda Item: 11</u></b>
<b>Report to:</b>	<b>Birmingham Health &amp; Wellbeing Board</b>
<b>Date:</b>	<b>23<sup>rd</sup> July 2020</b>
<b>TITLE:</b>	<b>LOCAL COVID-19 OUTBREAK ENGAGEMENT BOARD</b>
<b>Organisation</b>	<b>Birmingham City Council</b>
<b>Presenting Officer</b>	<b>Elizabeth Griffiths, Assistant Director of Public Health</b>

<b>Report Type:</b>	<b>Presentation</b>
---------------------	---------------------

<b>1. Purpose:</b>
To inform the Board of Governance and purpose of the new sub-Group of the Health and Wellbeing Board, the Local COVID-19 Outbreak Engagement Board.

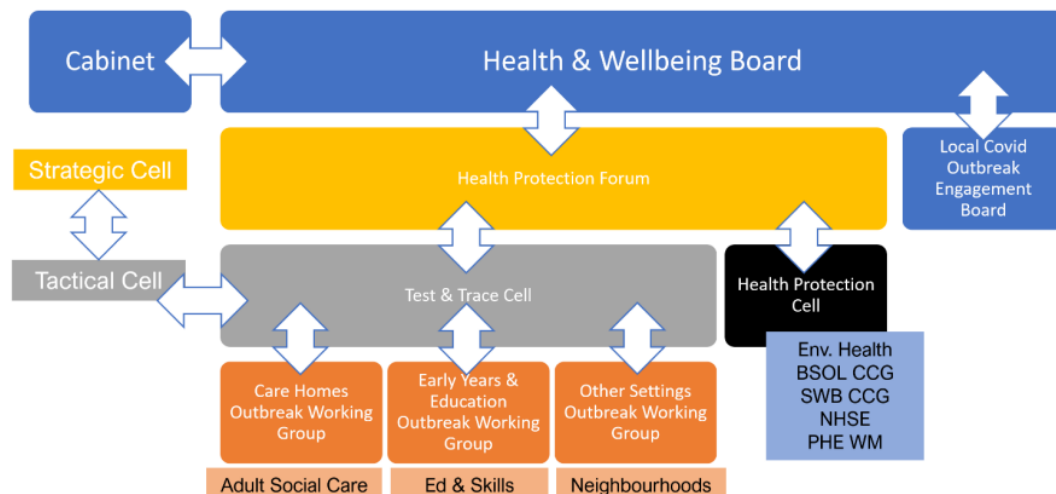
2. Implications:		
BHWB Strategy Priorities	Childhood Obesity	
	Health Inequalities	✓
Joint Strategic Needs Assessment		
Creating a Healthy Food City		
Creating a Mentally Healthy City		
Creating an Active City		
Creating a City without Inequality		
Health Protection		✓

<b>3. Recommendation</b>
3.1 The Board is asked to note the governance and purpose of the Local Covid Outbreak Engagement Board.

<b>4. Report Body</b>
4.1 The Local COVID-19 Outbreak Engagement Board is a new sub-committee of the Birmingham Health and Wellbeing Board. The Board is required by national guidelines for each upper tier local Authority's response to the COVID-19 outbreak.

- 4.2 The purpose of the Board is to provide political ownership and public-facing engagement and communication for outbreak response to Covid19 in Birmingham.
- 4.3 The Board has been set up to:
- Take an overview of the progress of the local implementation of Test and Trace.
  - Ensure that the Test and Trace response in Birmingham is delivering the right interventions to protect the health and wellbeing of citizens
  - To influence the development of the local Test and Trace programme.
  - To promote communication and engagement with stakeholders and residents of Birmingham related to COVID-19 and the Test and Trace programme.
- 4.4 The Board is chaired by the Leader of the Council; membership comprises five elected Members, the Director of Public Health, Assistant Director of Public Health, the Birmingham and Solihull and the Sandwell and West Birmingham Clinical Commissioning Groups, WM Police, BVSC and Birmingham Healthwatch.
- 4.5 Whilst the emergency plan is activated, the governance and decision making for Test and Trace lies within the emergency plan cell structures. The Test and Trace Cell is a Silver level command reporting to the Tactical Cell. In Parallel the Test and Trace cell reports to the Health Protection Forum.
- 4.6 The Engagement Board does not have decision making powers; its role is to provide democratic oversight of the response to Covid19 in Birmingham.
- 4.7 The Engagement Board provides an opportunity for members of the public to raise lines of questioning on the response to Covid-19 in Birmingham. Lines of questioning can be put in writing to the Board via [HealthyBrum@Birmingham.gov.uk](mailto:HealthyBrum@Birmingham.gov.uk)
- 4.8 The local governance structure is outlined in figure 1 and table 1.

**Figure 1: Local Governance**



**Table 1: Local Governance Responsibilities**

Forum/ Board	Health and Wellbeing Board	Local Covid Outbreak Engagement Board	Health Protection Forum	Test and Trace Cell	Setting Outbreak Working Groups
Governance	Statutory committee of the Council	Sub-group of Health and Wellbeing Board	Sub-group of Health and Wellbeing Board	Tactical level cell under the emergency command structure. In parallel reports to the Health Protection Forum	Sub-groups of Test and Trace Cell
Responsibility	Strategic long-term oversight of health and wellbeing	Political and public accountability and oversight of COVID-19 outbreak response	Strategic interagency delivery of outbreak response plan	Operational delivery of outbreak response plan	Setting specific inter-agency response support
Chair	Cabinet Member for Adult Social care and Health	Leader	Director of Public Health	Assistant Director of Public Health	AD within Directorates and Consultant in Public Health
Frequency of meeting	Bi-monthly	Monthly	Fortnightly	Twice weekly	Twice weekly

## **5. Compliance Issues**

### **5.1 HWBB Forum Responsibility and Board Update**

5.1.1 Whilst Birmingham's emergency plan is activated, the Test and Trace Cell will form part of the "Silver" command structure as a cell of the Tactical Cell. In parallel, the Test and Trace Cell feeds into the Birmingham Health Protection Forum, chaired by the Director of Public Health, which is a sub-group of the Health and Wellbeing Board.

- 5.1.2 Recognising that Test and Trace is likely to extend beyond twelve months, at such a time as the emergency response structures are stood down, formal governance of the Test and Trace Cell will be via the Health Protection Forum.
- 5.1.3 The Local COVID-19 Outbreak Engagement Board will provide democratic oversight to the Test and Trace response.

## **5.2 Management Responsibility**

The Director of Public Health is responsible for publishing the Local Outbreak Response Plan for the City and Chairs the Health Protection Forum.

The Assistant Director of Public Health chairs the Test and Trace Cell and is responsible for the local operational delivery of Test and Trace in Birmingham.

The following people have been involved in the preparation of this board paper:

Elizabeth Griffiths, Assistant Director of Public Health