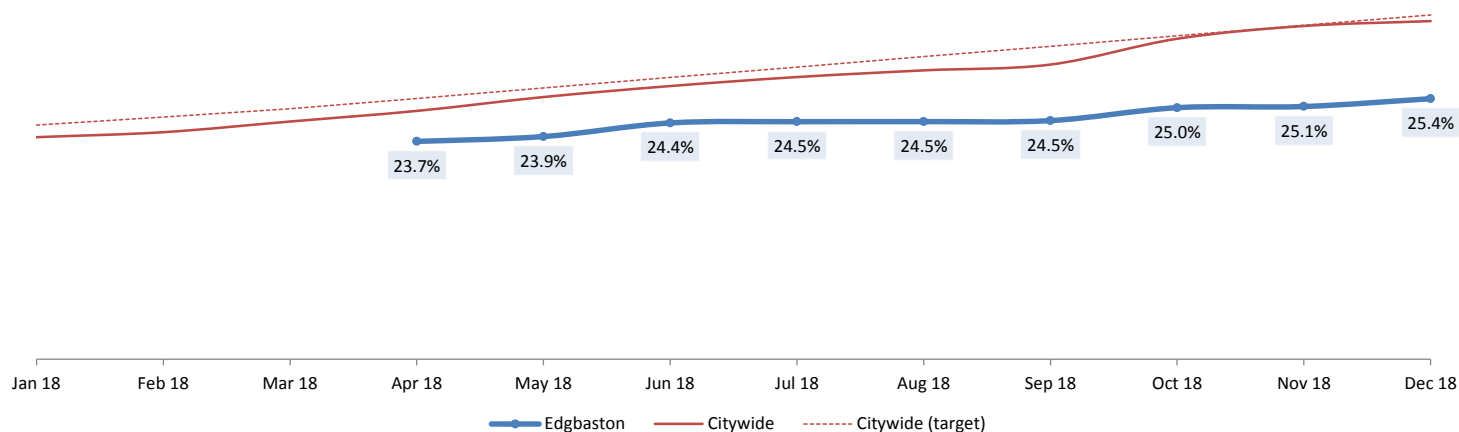


Constituency Scorecard Breakdown - December 2018

Showing results for people assigned to the team that covers Edgbaston

Proportion of eligible people in receipt of direct payments



Spread of results

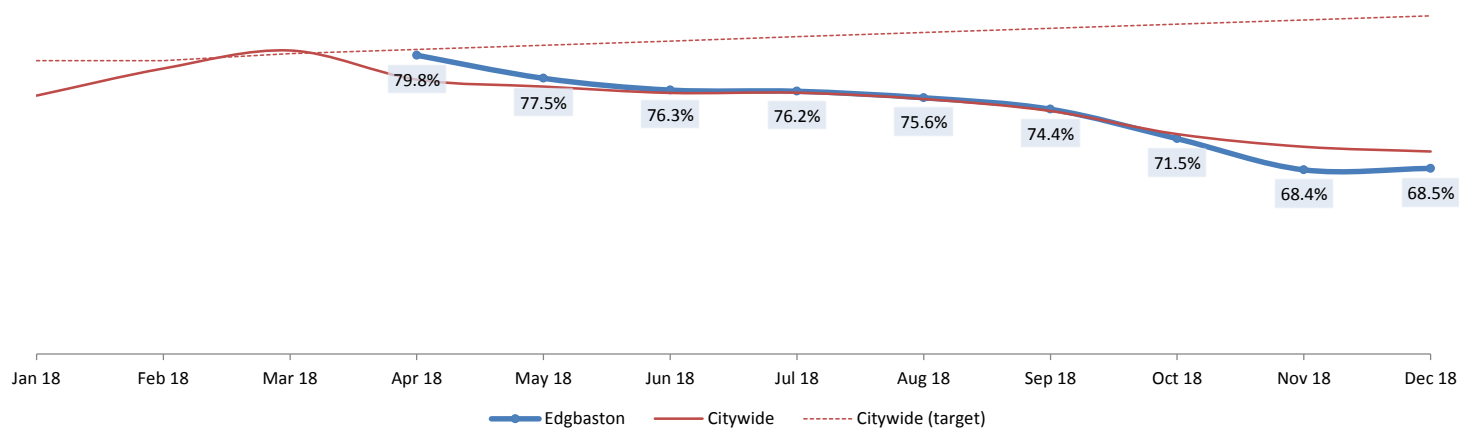
This month

Lowest	Northfield 22.6%	Yardley 23.4%	Selly Oak 23.7%	Edgbaston 25.4%	Erdington 27.2%	Hodge Hill 27.3%	Citywide 28.5%	Hall Green 29.1%	Sutton 31.5%	Ladywood 34.6%	Perry Barr 36.8%	Highest
--------	---------------------	------------------	--------------------	----------------------------	--------------------	---------------------	---------------------------	---------------------	-----------------	-------------------	---------------------	---------

12 month average

Lowest	Yardley 20.9%	Northfield 21.8%	Selly Oak 22.0%	Edgbaston 24.6%	Erdington 24.9%	Hodge Hill 25.4%	Citywide 26.1%	Hall Green 26.8%	Sutton 29.0%	Ladywood 32.8%	Perry Barr 34.8%	Highest
--------	------------------	---------------------	--------------------	----------------------------	--------------------	---------------------	---------------------------	---------------------	-----------------	-------------------	---------------------	---------

Proportion of clients reviewed or assessed in the last 12 months



Spread of results

This month

Lowest	Perry Barr 60.7%	Hall Green 63.8%	Northfield 64.6%	Hodge Hill 65.1%	Edgbaston 68.5%	Citywide 70.2%	Yardley 70.3%	Selly Oak 71.0%	Ladywood 72.6%	Erdington 78.2%	Sutton 79.6%	Highest
--------	---------------------	---------------------	---------------------	---------------------	----------------------------	---------------------------	------------------	--------------------	-------------------	--------------------	-----------------	---------

12 month average

Lowest	Perry Barr 69.3%	Selly Oak 70.9%	Northfield 72.4%	Hall Green 72.6%	Edgbaston 74.7%	Citywide 75.3%	Hodge Hill 75.4%	Ladywood 77.2%	Yardley 78.0%	Sutton 79.6%	Erdington 81.4%	Highest
--------	---------------------	--------------------	---------------------	---------------------	----------------------------	---------------------------	---------------------	-------------------	------------------	-----------------	--------------------	---------

Showing results for people assigned to the team that covers Edgbaston



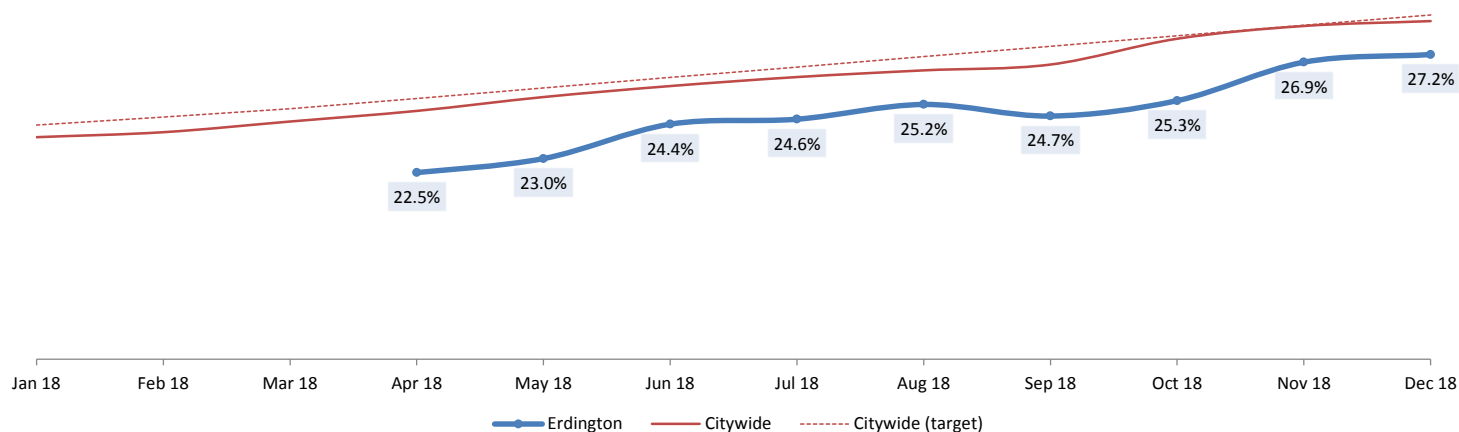
This month												
Lowest	Sutton	Ladywood	Hodge Hill	Erdington	Northfield	Perry Barr	Citywide	Yardley	Edgbaston	Hall Green	Selly Oak	Highest
	50.0%	76.9%	77.8%	85.7%	87.5%	88.9%	92.3%	94.4%	100.0%	100.0%		
	Performance for people under non-constituency teams: 0.0%											

12 month overall												
Lowest	Sutton	Perry Barr	Hodge Hill	Edgbaston	Erdington	Ladywood	Citywide	Hall Green	Selly Oak	Northfield	Yardley	Highest
	75.3%	83.1%	85.5%	86.8%	87.1%	87.2%	87.3%	89.9%	90.1%	92.2%	92.7%	
	Performance for people under non-constituency teams: 82.3%											

Constituency Scorecard Breakdown - December 2018

Showing results for people assigned to the team that covers Erdington

Proportion of eligible people in receipt of direct payments



Spread of results

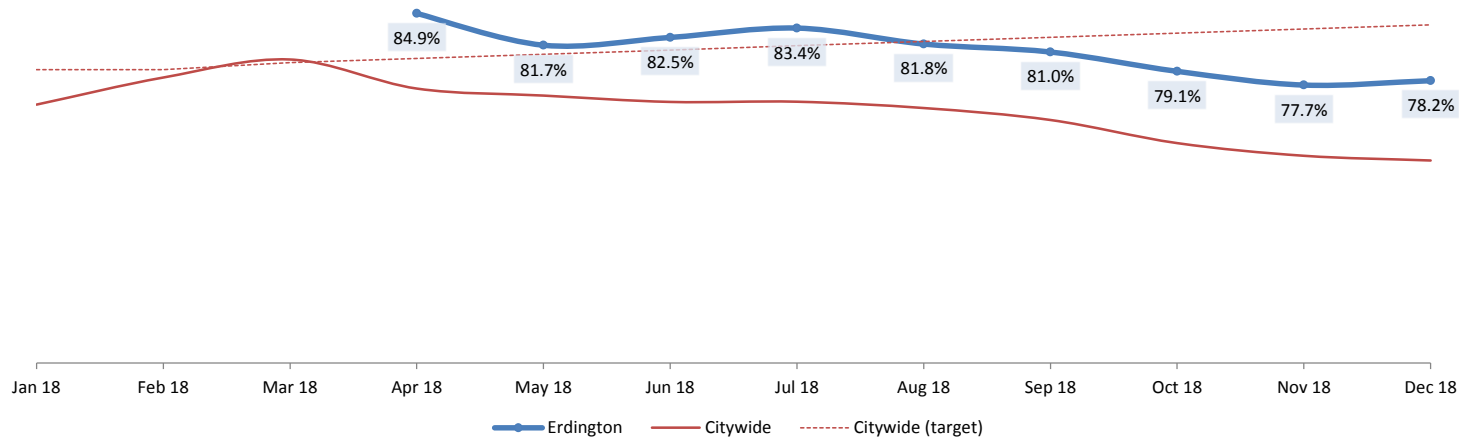
This month

Lowest	Northfield 22.6%	Yardley 23.4%	Selly Oak 23.7%	Edgbaston 25.4%	Erdington 27.2%	Hodge Hill 27.3%	Citywide 28.5%	Hall Green 29.1%	Sutton 31.5%	Ladywood 34.6%	Perry Barr 36.8%	Highest
--------	---------------------	------------------	--------------------	--------------------	----------------------------	---------------------	---------------------------	---------------------	-----------------	-------------------	---------------------	---------

12 month average

Lowest	Yardley 20.9%	Northfield 21.8%	Selly Oak 22.0%	Edgbaston 24.6%	Erdington 24.9%	Hodge Hill 25.4%	Citywide 26.1%	Hall Green 26.8%	Sutton 29.0%	Ladywood 32.8%	Perry Barr 34.8%	Highest
--------	------------------	---------------------	--------------------	--------------------	----------------------------	---------------------	---------------------------	---------------------	-----------------	-------------------	---------------------	---------

Proportion of clients reviewed or assessed in the last 12 months



Spread of results

This month

Lowest	Perry Barr 60.7%	Hall Green 63.8%	Northfield 64.6%	Hodge Hill 65.1%	Edgbaston 68.5%	Citywide 70.2%	Yardley 70.3%	Selly Oak 71.0%	Ladywood 72.6%	Erdington 78.2%	Sutton 79.6%	Highest
--------	---------------------	---------------------	---------------------	---------------------	--------------------	---------------------------	------------------	--------------------	-------------------	----------------------------	-----------------	---------

12 month average

Lowest	Perry Barr 69.3%	Selly Oak 70.9%	Northfield 72.4%	Hall Green 72.6%	Edgbaston 74.7%	Citywide 75.3%	Hodge Hill 75.4%	Ladywood 77.2%	Yardley 78.0%	Sutton 79.6%	Erdington 81.4%	Highest
--------	---------------------	--------------------	---------------------	---------------------	--------------------	---------------------------	---------------------	-------------------	------------------	-----------------	----------------------------	---------

Showing results for people assigned to the team that covers Erdington



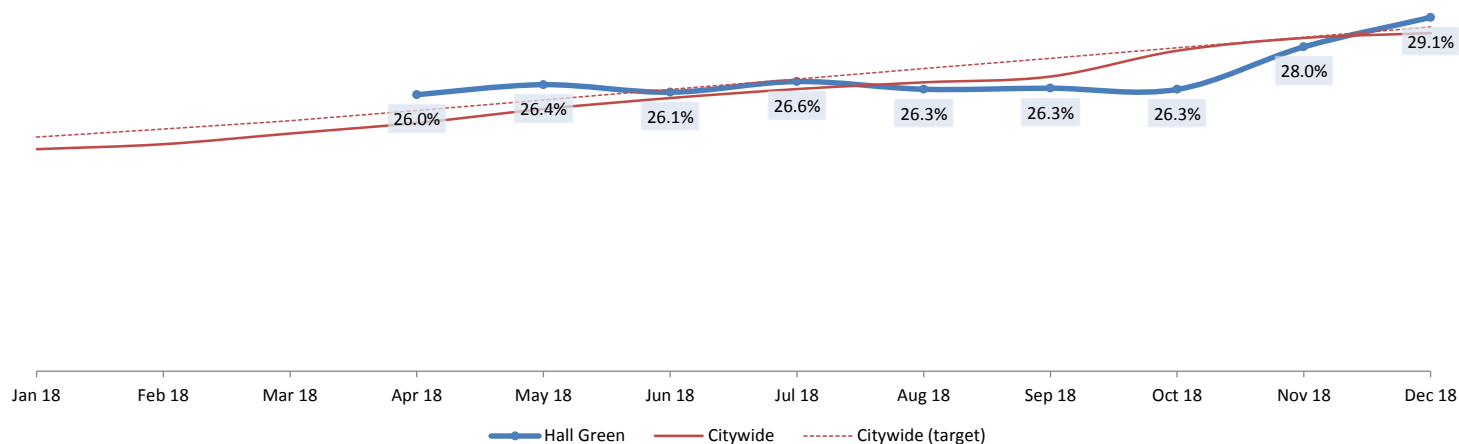
Performance for people under non-constituency teams: 0.0%

Performance for people under non-constituency teams: 82.3%

Constituency Scorecard Breakdown - December 2018

Showing results for people assigned to the team that covers Hall Green

Proportion of eligible people in receipt of direct payments

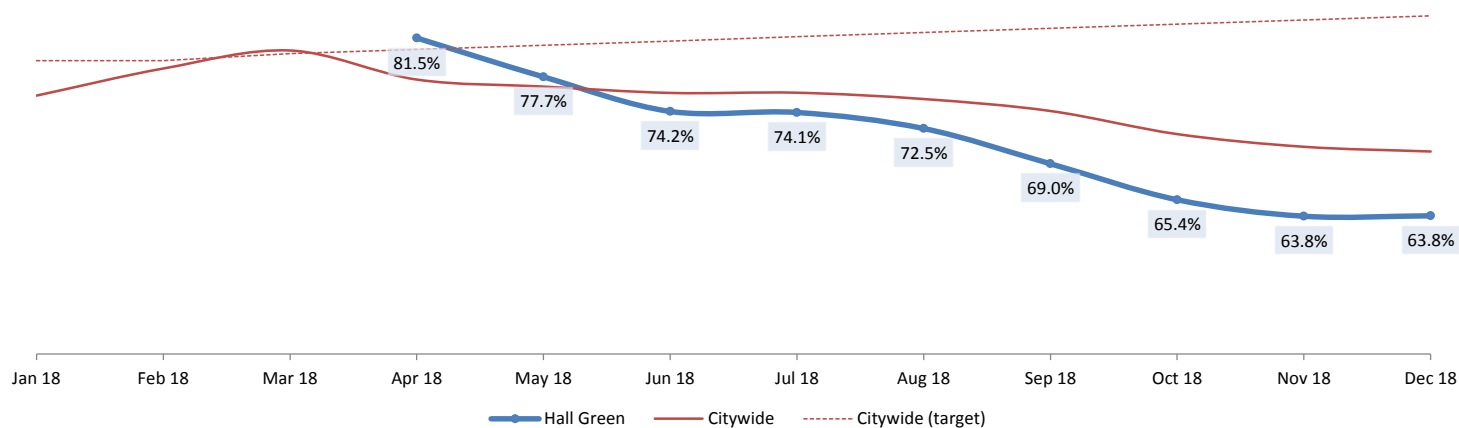


Spread of results

This month												
Lowest	Northfield	Yardley	Selly Oak	Edgbaston	Erdington	Hodge Hill	Citywide	Hall Green	Sutton	Ladywood	Perry Barr	Highest
	22.6%	23.4%	23.7%	25.4%	27.2%	27.3%	28.5%	29.1%	31.5%	34.6%	36.8%	

12 month average												
Lowest	Yardley	Northfield	Selly Oak	Edgbaston	Erdington	Hodge Hill	Citywide	Hall Green	Sutton	Ladywood	Perry Barr	Highest
	20.9%	21.8%	22.0%	24.6%	24.9%	25.4%	26.1%	26.8%	29.0%	32.8%	34.8%	

Proportion of clients reviewed or assessed in the last 12 months



Spread of results

This month												
Lowest	Perry Barr	Hall Green	Northfield	Hodge Hill	Edgbaston	Citywide	Yardley	Selly Oak	Ladywood	Erdington	Sutton	Highest
	60.7%	63.8%	64.6%	65.1%	68.5%	70.2%	70.3%	71.0%	72.6%	78.2%	79.6%	

12 month average												
Lowest	Perry Barr	Selly Oak	Northfield	Hall Green	Edgbaston	Citywide	Hodge Hill	Ladywood	Yardley	Sutton	Erdington	Highest
	69.3%	70.9%	72.4%	72.6%	74.7%	75.3%	75.4%	77.2%	78.0%	79.6%	81.4%	

Showing results for people assigned to the team that covers Hall Green



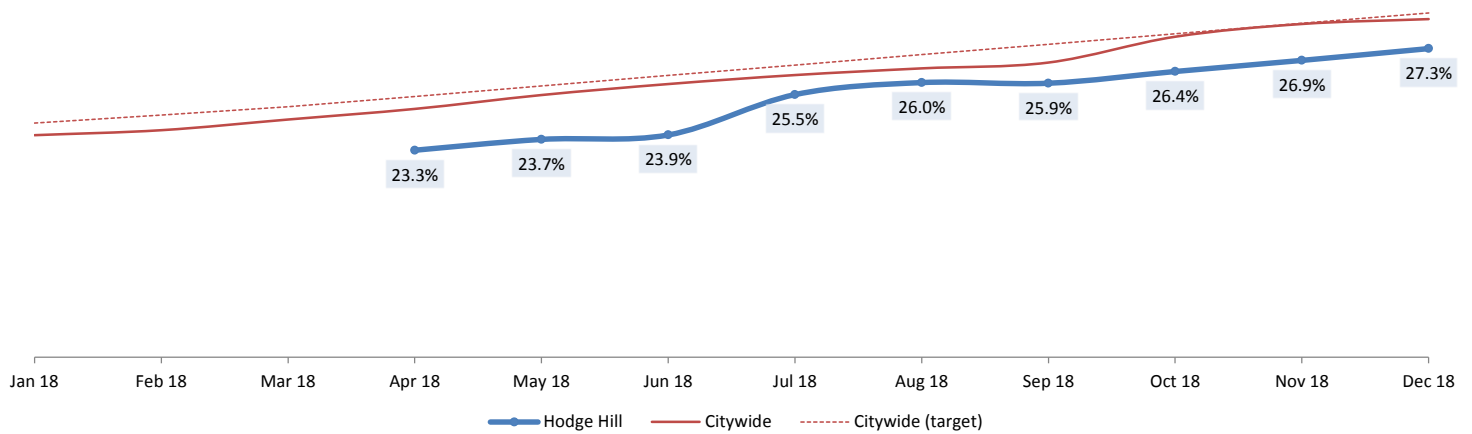
Performance for people under non-constituency teams: 0.0%

Performance for people under non-constituency teams: 82.3%

Constituency Scorecard Breakdown - December 2018

Showing results for people assigned to the team that covers Hodge Hill

Proportion of eligible people in receipt of direct payments

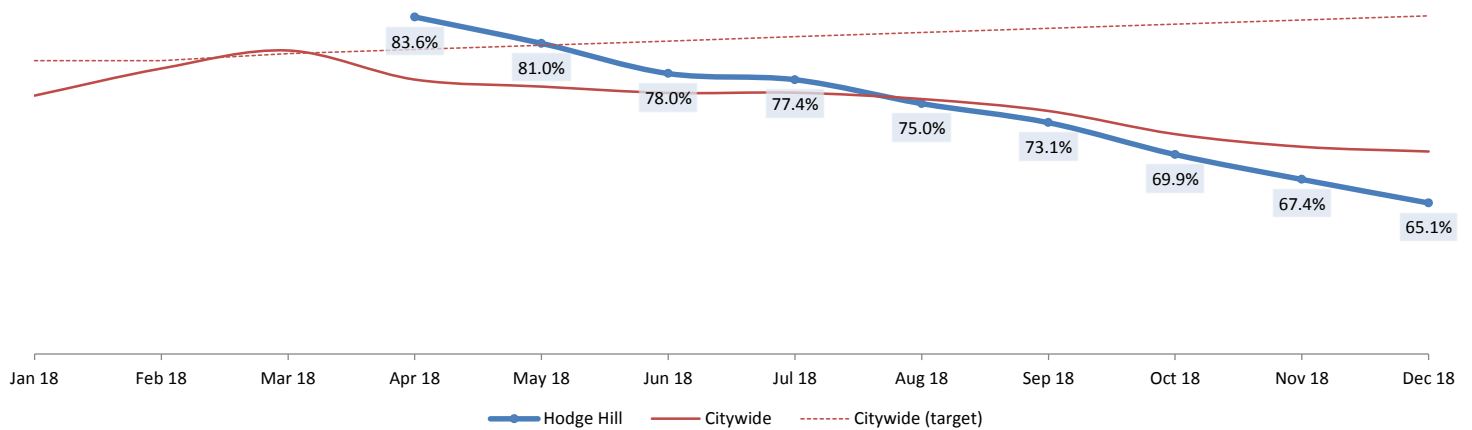


Spread of results

This month												
Lowest	Northfield	Yardley	Selly Oak	Edgbaston	Erdington	Hodge Hill	Citywide	Hall Green	Sutton	Ladywood	Perry Barr	Highest
	22.6%	23.4%	23.7%	25.4%	27.2%	27.3%	28.5%	29.1%	31.5%	34.6%	36.8%	

12 month average												
Lowest	Yardley	Northfield	Selly Oak	Edgbaston	Erdington	Hodge Hill	Citywide	Hall Green	Sutton	Ladywood	Perry Barr	Highest
	20.9%	21.8%	22.0%	24.6%	24.9%	25.4%	26.1%	26.8%	29.0%	32.8%	34.8%	

Proportion of clients reviewed or assessed in the last 12 months

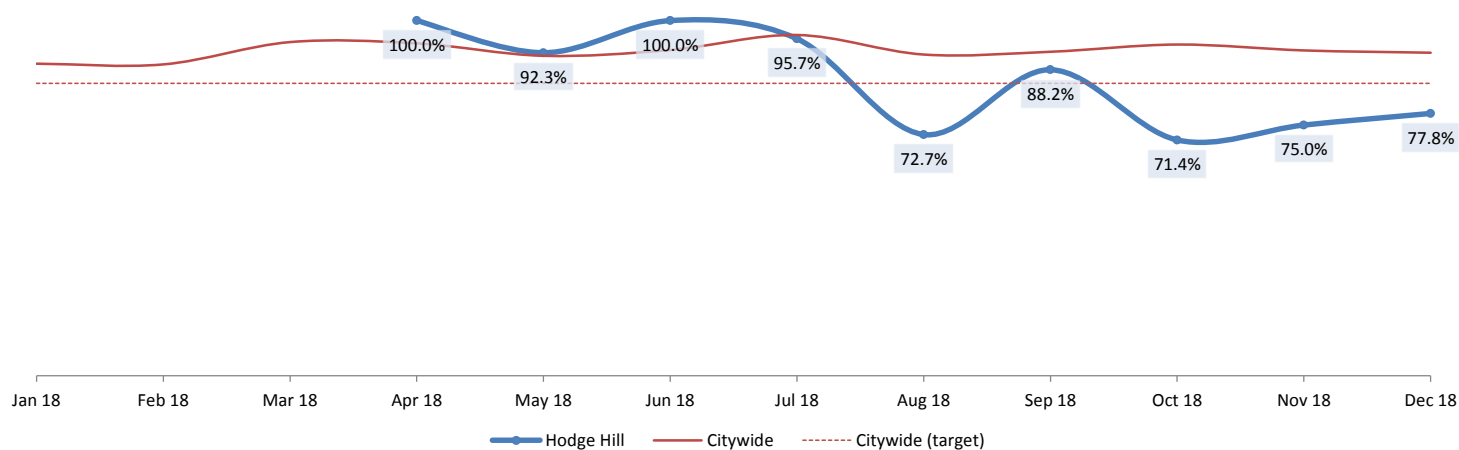


Spread of results

This month												
Lowest	Perry Barr	Hall Green	Northfield	Hodge Hill	Edgbaston	Citywide	Yardley	Selly Oak	Ladywood	Erdington	Sutton	Highest
	60.7%	63.8%	64.6%	65.1%	68.5%	70.2%	70.3%	71.0%	72.6%	78.2%	79.6%	

12 month average												
Lowest	Perry Barr	Selly Oak	Northfield	Hall Green	Edgbaston	Citywide	Hodge Hill	Ladywood	Yardley	Sutton	Erdington	Highest
	69.3%	70.9%	72.4%	72.6%	74.7%	75.3%	75.4%	77.2%	78.0%	79.6%	81.4%	

Showing results for people assigned to the team that covers Hodge Hill



This month												
Lowest	Sutton 50.0%	Ladywood 76.9%	Hodge Hill 77.8%	Erdington 85.7%	Northfield 87.5%	Perry Barr 88.9%	Citywide 92.3%	Yardley 94.4%	Edgbaston 100.0%	Hall Green 100.0%	Selly Oak 100.0%	Highest

Performance for people under non-constituency teams: 0.0%

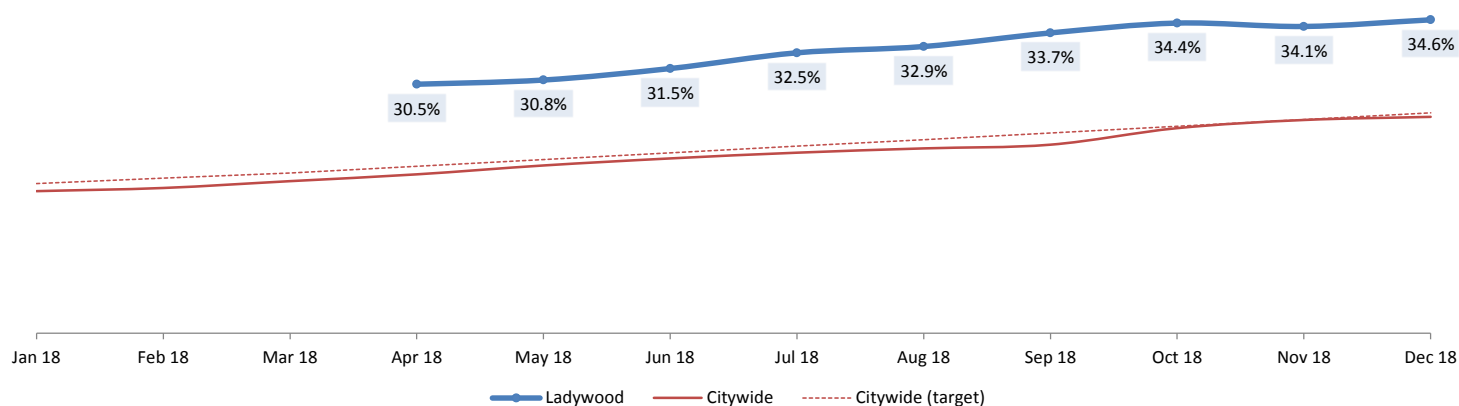
12 month total												
Lowest	Sutton	Perry Barr	Hodge Hill	Edgbaston	Erdington	Ladywood	Citywide	Hall Green	Selly Oak	Northfield	Yardley	Highest
	75.3%	83.1%	85.5%	86.8%	87.1%	87.2%	87.3%	89.9%	90.1%	92.2%	92.7%	

Performance for people under non-constituency teams: 82.3%

Constituency Scorecard Breakdown - December 2018

Showing results for people assigned to the team that covers Ladywood

Proportion of eligible people in receipt of direct payments



Spread of results

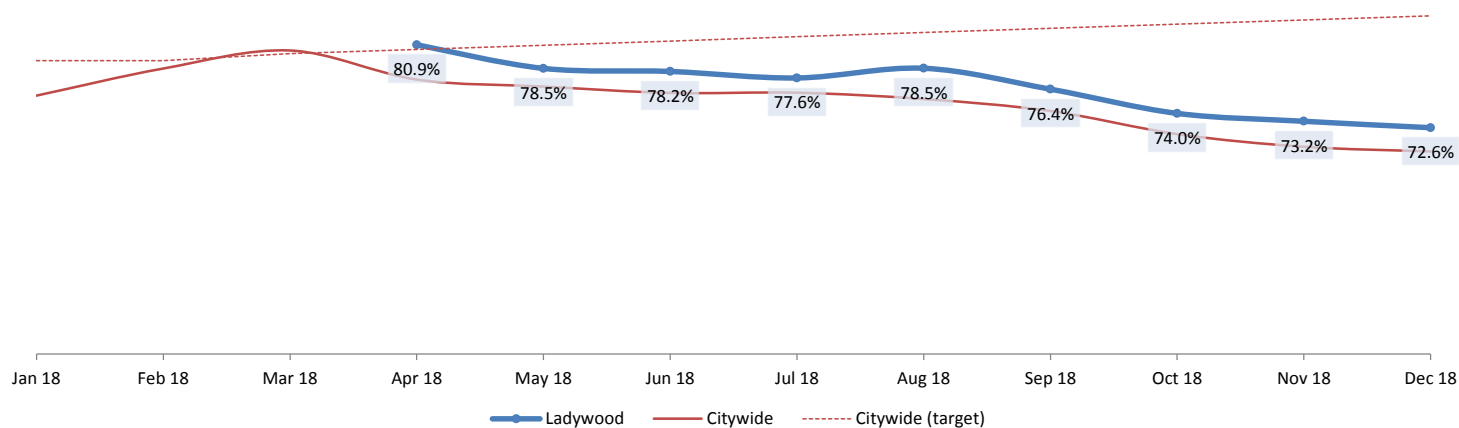
This month

Lowest	Northfield	Yardley	Selly Oak	Edgbaston	Erdington	Hodge Hill	Citywide	Hall Green	Sutton	Ladywood	Perry Barr	Highest
	22.6%	23.4%	23.7%	25.4%	27.2%	27.3%	28.5%	29.1%	31.5%	34.6%	36.8%	

12 month average

Lowest	Yardley	Northfield	Selly Oak	Edgbaston	Erdington	Hodge Hill	Citywide	Hall Green	Sutton	Ladywood	Perry Barr	Highest
	20.9%	21.8%	22.0%	24.6%	24.9%	25.4%	26.1%	26.8%	29.0%	32.8%	34.8%	

Proportion of clients reviewed or assessed in the last 12 months



Spread of results

This month

Lowest	Perry Barr	Hall Green	Northfield	Hodge Hill	Edgbaston	Citywide	Yardley	Selly Oak	Ladywood	Erdington	Sutton	Highest
	60.7%	63.8%	64.6%	65.1%	68.5%	70.2%	70.3%	71.0%	72.6%	78.2%	79.6%	

12 month average

Lowest	Perry Barr	Selly Oak	Northfield	Hall Green	Edgbaston	Citywide	Hodge Hill	Ladywood	Yardley	Sutton	Erdington	Highest
	69.3%	70.9%	72.4%	72.6%	74.7%	75.3%	75.4%	77.2%	78.0%	79.6%	81.4%	

Showing results for people assigned to the team that covers Ladywood



This month												
Lowest	Sutton 50.0%	Ladywood 76.9%	Hodge Hill 77.8%	Erdington 85.7%	Northfield 87.5%	Perry Barr 88.9%	Citywide 92.3%	Yardley 94.4%	Edgbaston 100.0%	Hall Green 100.0%	Selly Oak 100.0%	Highest

Performance for people under non-constituency teams: 0.0%

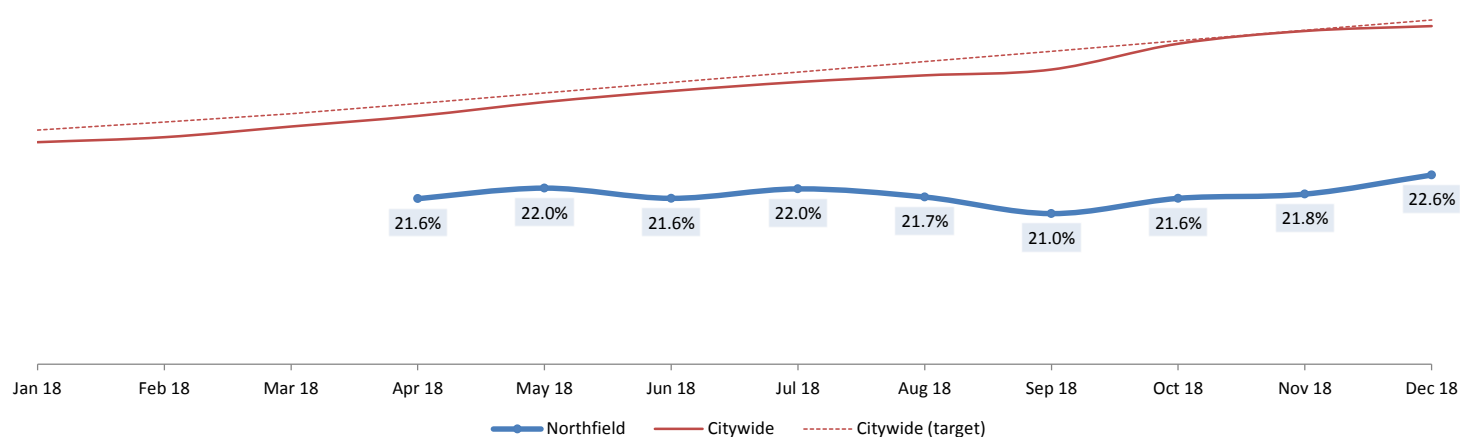
12 month total												
Lowest	Sutton	Perry Barr	Hodge Hill	Edgbaston	Erdington	Ladywood	Citywide	Hall Green	Selly Oak	Northfield	Yardley	Highest
	75.3%	83.1%	85.5%	86.8%	87.1%	87.2%	87.3%	89.9%	90.1%	92.2%	92.7%	

Performance for people under non-constituency teams: 82.3%

Constituency Scorecard Breakdown - December 2018

Showing results for people assigned to the team that covers Northfield

Proportion of eligible people in receipt of direct payments



Spread of results

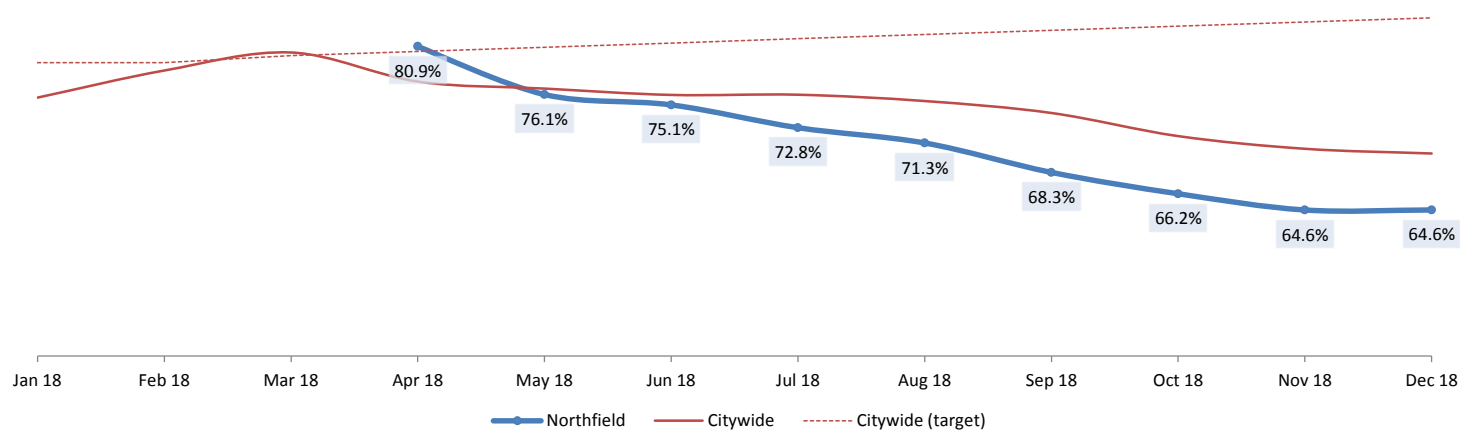
This month

Lowest	Northfield 22.6%	Yardley 23.4%	Selly Oak 23.7%	Edgbaston 25.4%	Erdington 27.2%	Hodge Hill 27.3%	Citywide 28.5%	Hall Green 29.1%	Sutton 31.5%	Ladywood 34.6%	Perry Barr 36.8%	Highest
--------	----------------------------	------------------	--------------------	--------------------	--------------------	---------------------	--------------------------	---------------------	-----------------	-------------------	---------------------	---------

12 month average

Lowest	Yardley 20.9%	Northfield 21.8%	Selly Oak 22.0%	Edgbaston 24.6%	Erdington 24.9%	Hodge Hill 25.4%	Citywide 26.1%	Hall Green 26.8%	Sutton 29.0%	Ladywood 32.8%	Perry Barr 34.8%	Highest
--------	------------------	----------------------------	--------------------	--------------------	--------------------	---------------------	--------------------------	---------------------	-----------------	-------------------	---------------------	---------

Proportion of clients reviewed or assessed in the last 12 months



Spread of results

This month

Lowest	Perry Barr 60.7%	Hall Green 63.8%	Northfield 64.6%	Hodge Hill 65.1%	Edgbaston 68.5%	Citywide 70.2%	Yardley 70.3%	Selly Oak 71.0%	Ladywood 72.6%	Erdington 78.2%	Sutton 79.6%	Highest
--------	---------------------	---------------------	----------------------------	---------------------	--------------------	--------------------------	------------------	--------------------	-------------------	--------------------	-----------------	---------

12 month average

Lowest	Perry Barr 69.3%	Selly Oak 70.9%	Northfield 72.4%	Hall Green 72.6%	Edgbaston 74.7%	Citywide 75.3%	Hodge Hill 75.4%	Ladywood 77.2%	Yardley 78.0%	Sutton 79.6%	Erdington 81.4%	Highest
--------	---------------------	--------------------	----------------------------	---------------------	--------------------	--------------------------	---------------------	-------------------	------------------	-----------------	--------------------	---------

Showing results for people assigned to the team that covers Northfield



Performance by constituency												
Lowest	This month										Highest	
	Sutton	Ladywood	Hodge Hill	Erdington	Northfield	Perry Barr	Citywide	Yardley	Edgbaston	Hall Green		Selly Oak
	50.0%	76.9%	77.8%	85.7%	87.5%	88.9%	92.3%	94.4%	100.0%	100.0%		100.0%
Performance for people under non-constituency teams: 0.0%												

12 month overall												
Lowest	Sutton	Perry Barr	Hodge Hill	Edgbaston	Erdington	Ladywood	Citywide	Hall Green	Selly Oak	Northfield	Yardley	Highest
	75.3%	83.1%	85.5%	86.8%	87.1%	87.2%	87.3%	89.9%	90.1%	92.2%	92.7%	
	Performance for people under non-constituency teams: 82.3%											

Showing results for people assigned to the team that covers Perry Barr

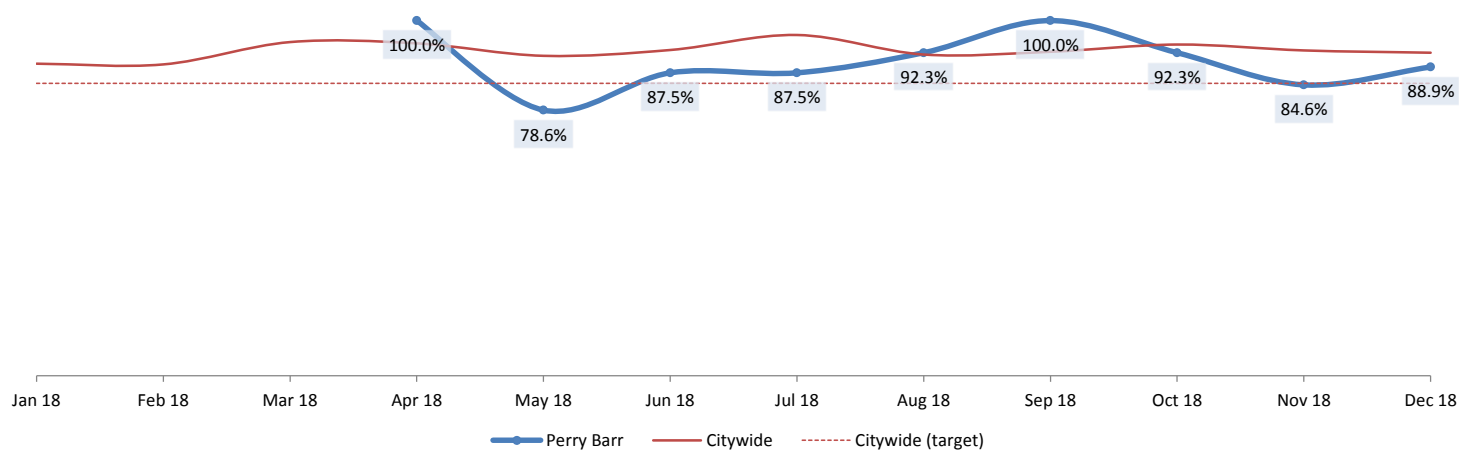


12 month average												
Lowest	Yardley 20.9%	Northfield 21.8%	Selly Oak 22.0%	Edgbaston 24.6%	Erdington 24.9%	Hodge Hill 25.4%	Citywide 26.1%	Hall Green 26.8%	Sutton 29.0%	Ladywood 32.8%	Perry Barr 34.8%	Highest



12 month average												
Lowest	Perry Barr 69.3%	Selly Oak 70.9%	Northfield 72.4%	Hall Green 72.6%	Edgbaston 74.7%	Citywide 75.3%	Hodge Hill 75.4%	Ladywood 77.2%	Yardley 78.0%	Sutton 79.6%	Erdington 81.4%	Highest

Showing results for people assigned to the team that covers Perry Barr



This month												
Lowest	Sutton	Ladywood	Hodge Hill	Erdington	Northfield	Perry Barr	Citywide	Yardley	Edgbaston	Hall Green	Selly Oak	Highest
	50.0%	76.9%	77.8%	85.7%	87.5%	88.9%	92.3%	94.4%	100.0%	100.0%	100.0%	

Performance for people under non-constituency teams: 0.0%

12 month overall

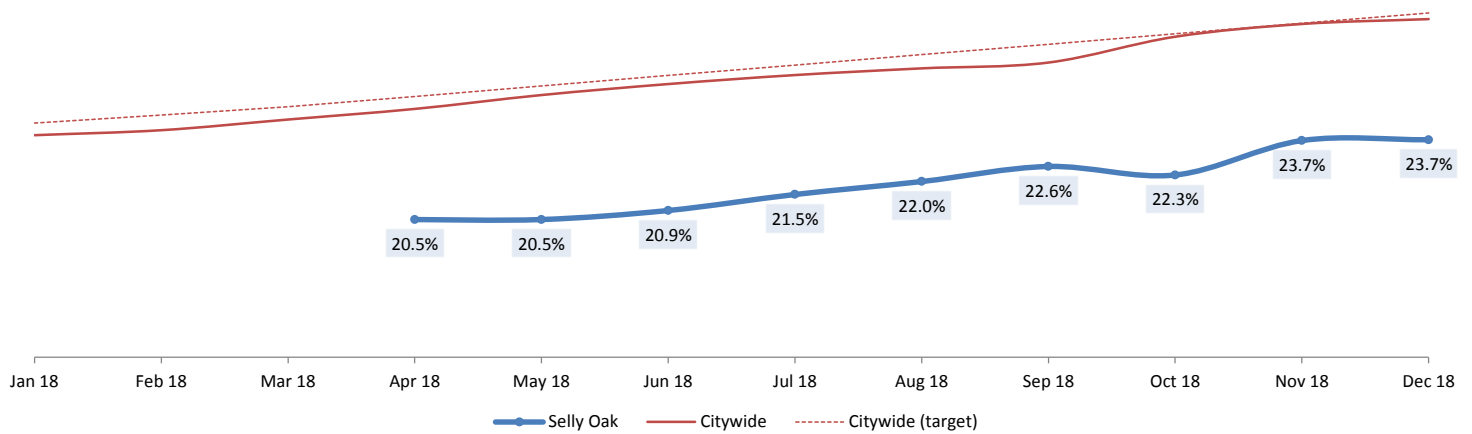
Lowest	22 months' carbon										Highest
	Sutton 75.3%	Perry Barr 83.1%	Hodge Hill 85.5%	Edgbaston 86.8%	Erdington 87.1%	Ladywood 87.2%	Citywide 87.3%	Hall Green 89.9%	Selly Oak 90.1%	Northfield 92.2%	Yardley 92.7%

Performance for people under non-constituency teams: 82.3%

Constituency Scorecard Breakdown - December 2018

Showing results for people assigned to the team that covers Selly Oak

Proportion of eligible people in receipt of direct payments

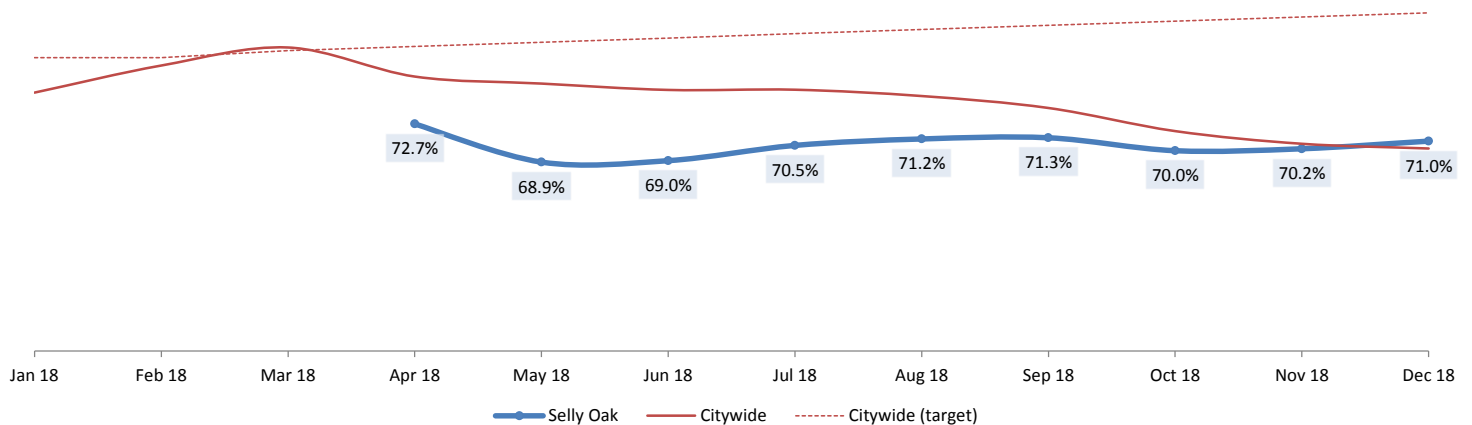


Spread of results

This month												
Lowest	Northfield	Yardley	Selly Oak	Edgbaston	Erdington	Hodge Hill	Citywide	Hall Green	Sutton	Ladywood	Perry Barr	Highest
	22.6%	23.4%	23.7%	25.4%	27.2%	27.3%	28.5%	29.1%	31.5%	34.6%	36.8%	

12 month average												
Lowest	Yardley	Northfield	Selly Oak	Edgbaston	Erdington	Hodge Hill	Citywide	Hall Green	Sutton	Ladywood	Perry Barr	Highest
	20.9%	21.8%	22.0%	24.6%	24.9%	25.4%	26.1%	26.8%	29.0%	32.8%	34.8%	

Proportion of clients reviewed or assessed in the last 12 months



Spread of results

This month												
Lowest	Perry Barr	Hall Green	Northfield	Hodge Hill	Edgbaston	Citywide	Yardley	Selly Oak	Ladywood	Erdington	Sutton	Highest
	60.7%	63.8%	64.6%	65.1%	68.5%	70.2%	70.3%	71.0%	72.6%	78.2%	79.6%	

12 month average												
Lowest	Perry Barr	Selly Oak	Northfield	Hall Green	Edgbaston	Citywide	Hodge Hill	Ladywood	Yardley	Sutton	Erdington	Highest
	69.3%	70.9%	72.4%	72.6%	74.7%	75.3%	75.4%	77.2%	78.0%	79.6%	81.4%	

Showing results for people assigned to the team that covers Selly Oak



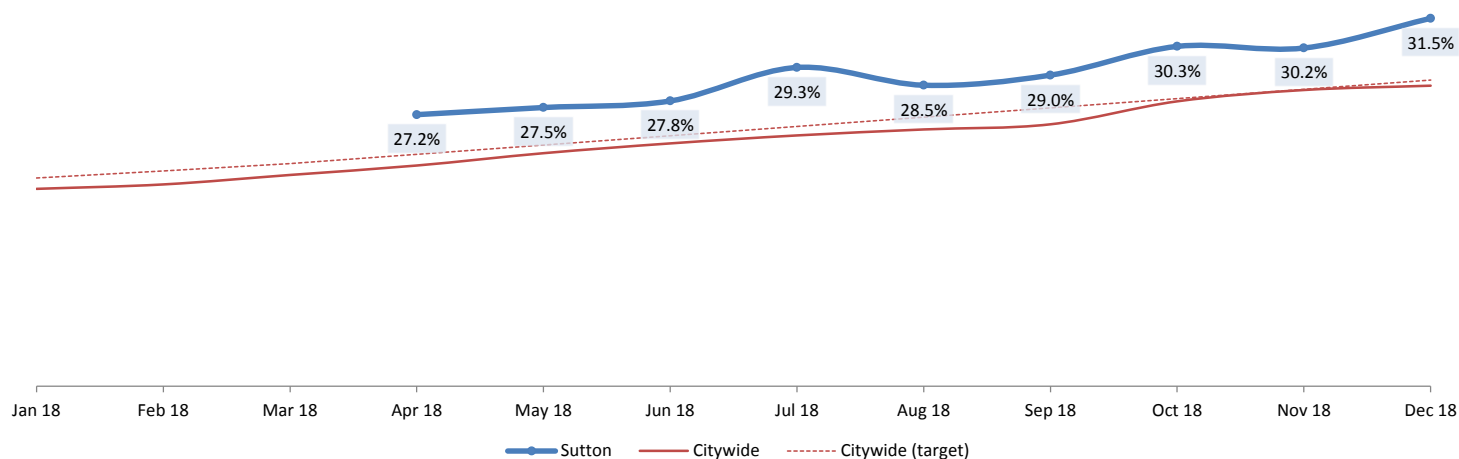
Performance for people under non-constituency teams: 0.0%

Performance for people under non-constituency teams: 82.3%

Constituency Scorecard Breakdown - December 2018

Showing results for people assigned to the team that covers Sutton Coldfield

Proportion of eligible people in receipt of direct payments

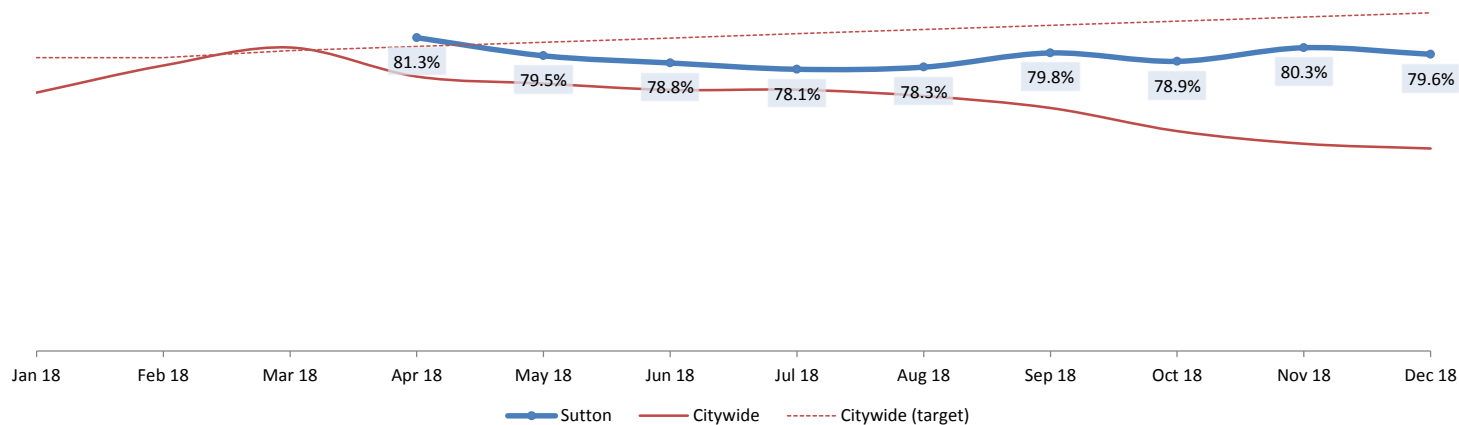


Spread of results

This month												
Lowest	Northfield	Yardley	Selly Oak	Edgbaston	Erdington	Hodge Hill	Citywide	Hall Green	Sutton	Ladywood	Perry Barr	Highest
	22.6%	23.4%	23.7%	25.4%	27.2%	27.3%	28.5%	29.1%	31.5%	34.6%	36.8%	

12 month average												
Lowest	Yardley	Northfield	Selly Oak	Edgbaston	Erdington	Hodge Hill	Citywide	Hall Green	Sutton	Ladywood	Perry Barr	Highest
	20.9%	21.8%	22.0%	24.6%	24.9%	25.4%	26.1%	26.8%	29.0%	32.8%	34.8%	

Proportion of clients reviewed or assessed in the last 12 months



Spread of results

This month												
Lowest	Perry Barr	Hall Green	Northfield	Hodge Hill	Edgbaston	Citywide	Yardley	Selly Oak	Ladywood	Erdington	Sutton	Highest
	60.7%	63.8%	64.6%	65.1%	68.5%	70.2%	70.3%	71.0%	72.6%	78.2%	79.6%	

12 month average												
Lowest	Perry Barr	Selly Oak	Northfield	Hall Green	Edgbaston	Citywide	Hodge Hill	Ladywood	Yardley	Sutton	Erdington	Highest
	69.3%	70.9%	72.4%	72.6%	74.7%	75.3%	75.4%	77.2%	78.0%	79.6%	81.4%	

Showing results for people assigned to the team that covers Sutton Coldfield



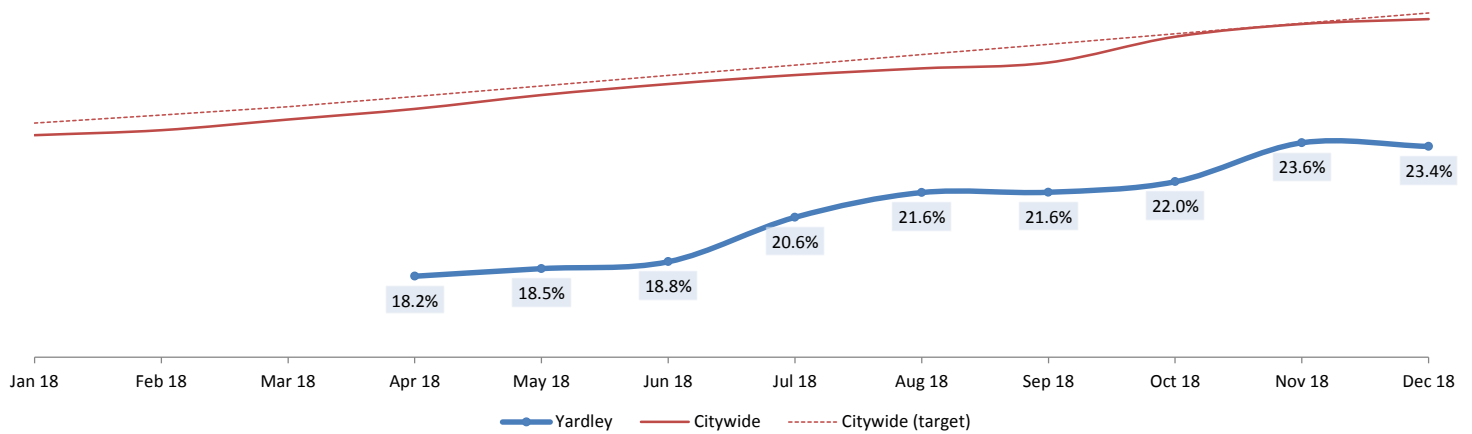
Performance for people under non-constituency teams: 0.0%

Performance for people under non-constituency teams: 82.3%

Constituency Scorecard Breakdown - December 2018

Showing results for people assigned to the team that covers Yardley

Proportion of eligible people in receipt of direct payments

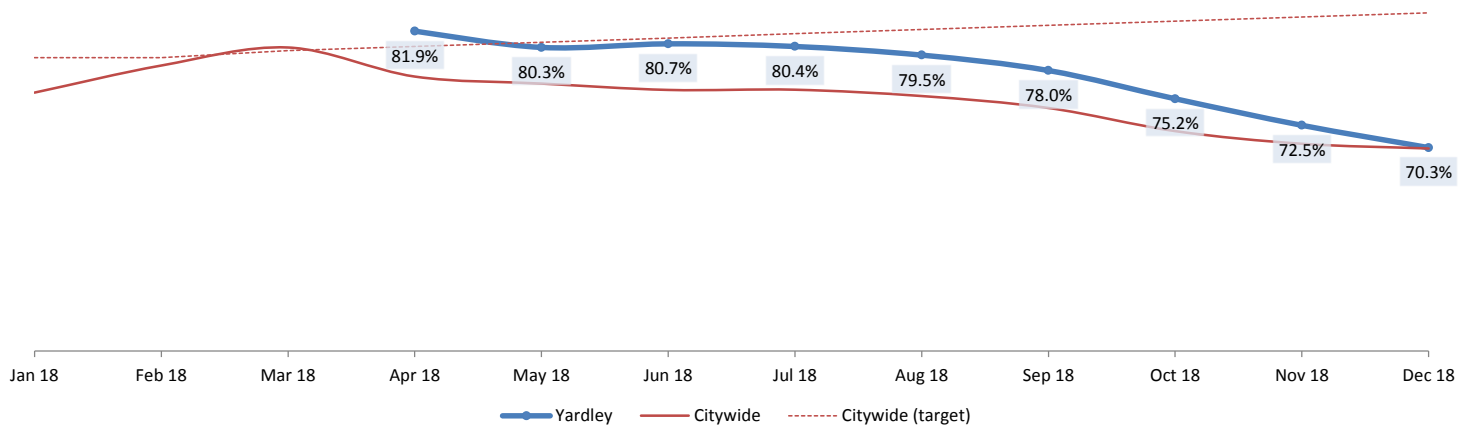


Spread of results

This month												
Lowest	Northfield	Yardley	Selly Oak	Edgbaston	Erdington	Hodge Hill	Citywide	Hall Green	Sutton	Ladywood	Perry Barr	Highest
	22.6%	23.4%	23.7%	25.4%	27.2%	27.3%	28.5%	29.1%	31.5%	34.6%	36.8%	

12 month average												
Lowest	Yardley	Northfield	Selly Oak	Edgbaston	Erdington	Hodge Hill	Citywide	Hall Green	Sutton	Ladywood	Perry Barr	Highest
	20.9%	21.8%	22.0%	24.6%	24.9%	25.4%	26.1%	26.8%	29.0%	32.8%	34.8%	

Proportion of clients reviewed or assessed in the last 12 months

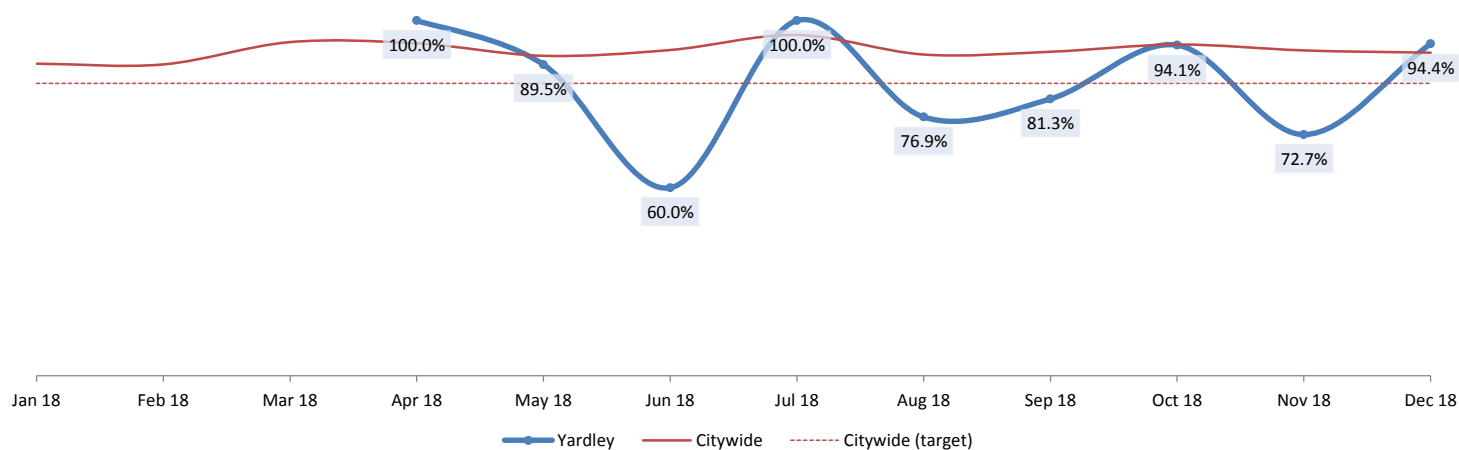


Spread of results

This month												
Lowest	Perry Barr	Hall Green	Northfield	Hodge Hill	Edgbaston	Citywide	Yardley	Selly Oak	Ladywood	Erdington	Sutton	Highest
	60.7%	63.8%	64.6%	65.1%	68.5%	70.2%	70.3%	71.0%	72.6%	78.2%	79.6%	

12 month average												
Lowest	Perry Barr	Selly Oak	Northfield	Hall Green	Edgbaston	Citywide	Hodge Hill	Ladywood	Yardley	Sutton	Erdington	Highest
	69.3%	70.9%	72.4%	72.6%	74.7%	75.3%	75.4%	77.2%	78.0%	79.6%	81.4%	

Showing results for people assigned to the team that covers Yardley



This month												
Lowest	Sutton	Ladywood	Hodge Hill	Erdington	Northfield	Perry Barr	Citywide	Yardley	Edgbaston	Hall Green	Selly Oak	Highest
	50.0%	76.9%	77.8%	85.7%	87.5%	88.9%	92.3%	94.4%	100.0%	100.0%	100.0%	
	Performance for people under non-constituency teams: 0.0%											

12 month overall												
Lowest	Sutton	Perry Barr	Hodge Hill	Edgbaston	Erdington	Ladywood	Citywide	Hall Green	Selly Oak	Northfield	Yardley	Highest
	75.3%	83.1%	85.5%	86.8%	87.1%	87.2%	87.3%	89.9%	90.1%	92.2%	92.7%	
	Performance for people under non-constituency teams: 82.3%											