

# **Sexual Health: Testing & Treatment Service in Birmingham**

Health & Social Care  
Overview & Scrutiny Committee

16<sup>th</sup> February 2021

# Umbrella Sexual Health Service Overview

- Jointly commissioned with Solihull Metropolitan Borough Council from August 2015
- Delivered by Umbrella, led by University Hospitals Birmingham NHS Foundation Trust (UHB), 5 year contract 10<sup>th</sup> August 2015 – 9<sup>th</sup> August 2020 with a 2 year option to extend exercised. Current contract ends 9<sup>th</sup> August 2022
- Annual contract value for 2020/1 and 2021/22: 5% reduction from 2019/20

Year	Contract Value
2015-16 (10.08.15 – 31.03.16)	£11,229,444
2016-17	£14,539,845
2017-18	£14,754,091
2018-19	£14,826,148
2019-20	£14,777,460
2020-21	£14,038,467
2021-22	£14,038,467

Core City Cost Comparison
Contract spend per head of population benchmarked against 8 core cities in 2019/20:
Highest Spend: <b>£21.23</b> per head – Nottingham
Median Spend: <b>£13.39</b> per head
<b>Birmingham:</b> <b>£12.86</b> per head of population 4 <sup>th</sup> highest spend out of 8 core cities
Lowest Spend: <b>£9.25</b> per head – Sheffield

# Statutory Service Mandated to Commission:

- Open access sexual health services
- Sexually transmitted infection testing (STI) and treatment
- Advice and access to a broad range of contraception
- Advice on preventing unplanned pregnancy

## Key Outcomes

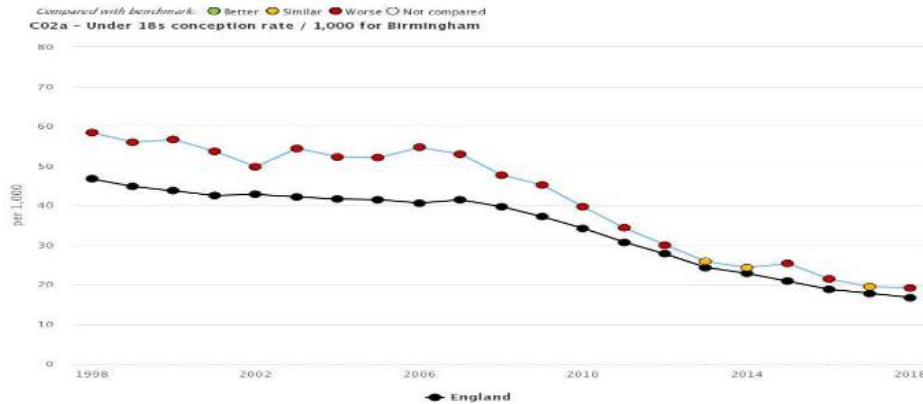
Public Health Outcome Framework and locally agreed outcomes:

- Increasing the use of good quality contraception to reduce under-18 conceptions and abortions for all ages (PHOF Indicator)
- Reducing the late diagnosis of HIV and transmission of Sexually Transmitted Infections and Blood Borne Viruses to prevent reinfection by ensuring prompt access for earlier diagnosis and treatment (PHOF Indicator)
- Providing better access to services for high risk priority groups
- Improved support for people vulnerable to, and victims of, sexual coercion, sexual violence and exploitation
- Increasing the chlamydia screened diagnostic rate in the 15 - 24 age group (PHOF Indicator)

# Public Health Outcomes Framework Performance

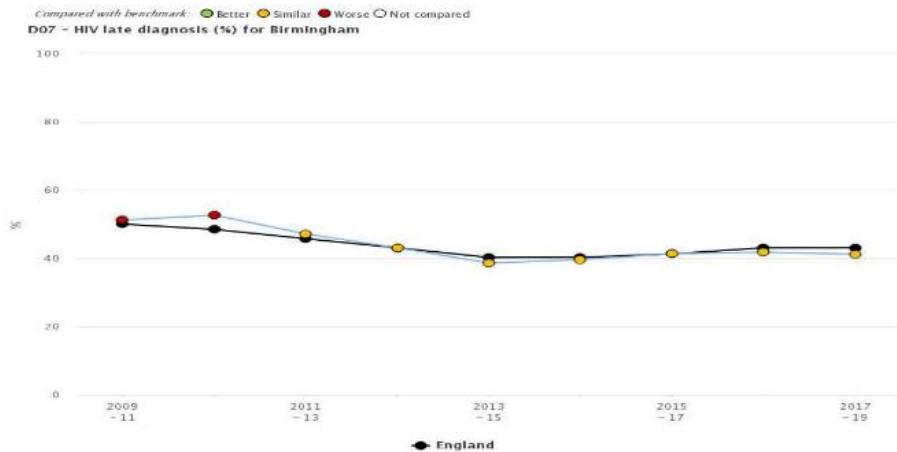
Data Source: <https://fingertips.phe.org.uk/> (accessed 19/01/2021)

## Reducing Under 18 Conceptions



The conceptions rate per 1,000 women aged 15-17 continues to decline in line with England rates: in 2018, the rate in Birmingham was 19.2 compared to 16.7 for England and 19.1 for the West Midlands.

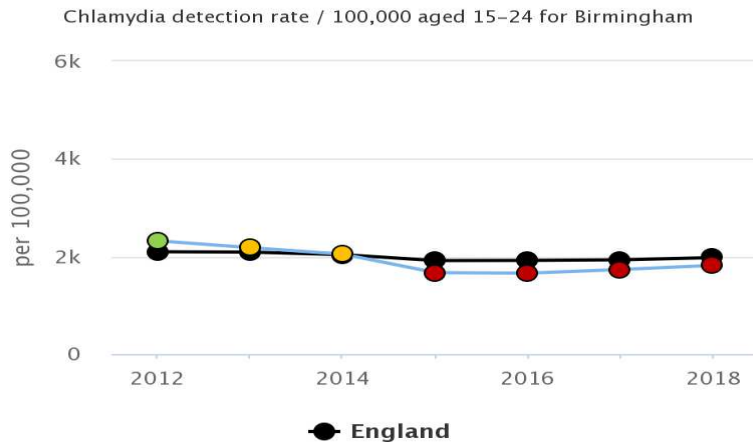
## Reducing the Late Diagnosis of HIV



Between 2017-19, the percentage of late HIV diagnoses in Birmingham was 41.2% - slightly below the England average of 43.1% and below the West Midlands average of 45.2%

# Public Health Outcomes Framework Performance

## Increasing Chlamydia Diagnosis in 15-24 year-olds



Birmingham has made steady progress towards the national target of 2,300 diagnoses per 100,000 of 15-24 year-olds: a rate of 1,827 was achieved in 2019, compared to 2,043 for England and 1,698 for the West Midlands.

## Core City Performance Comparison

Out of the 8 core cities:

- **Reducing Under 18 Conceptions** - Birmingham ranks 2<sup>nd</sup> highest
- **Reducing the Late Diagnosis of HIV** - Birmingham ranks highest
- **Increasing Chlamydia Diagnosis in 15-24 year-olds** - Birmingham ranks 4<sup>th</sup> highest

# Future Plans

## **HIV PrEP (Pre-Exposure Prophylaxis)**

- PrEP (funded by the NHS) prevents the transmission of HIV and taken by someone who is HIV-negative. PrEP forms part of combination HIV prevention alongside health promotion, condom use, regular testing and HIV treatment where indicated.
- National 3-year Impact trial ended in September 2020 and routine commissioning of PrEP related activities from Umbrella commenced in October 2020.
- Targeted promotion of PrEP to key risk groups

## **HIV/BBV Fast Track City**

- Set up of Project Board and Steering Group to take Fast Track Cities+ forward
- Approval received from Cabinet on 15<sup>th</sup> December 2020
- Currently in the process of commissioning Community Engagement and Needs Assessment
- Commissioning of services where gaps identified and changing pathways to deliver efficiencies (this will include increased testing with a targeted community approach)

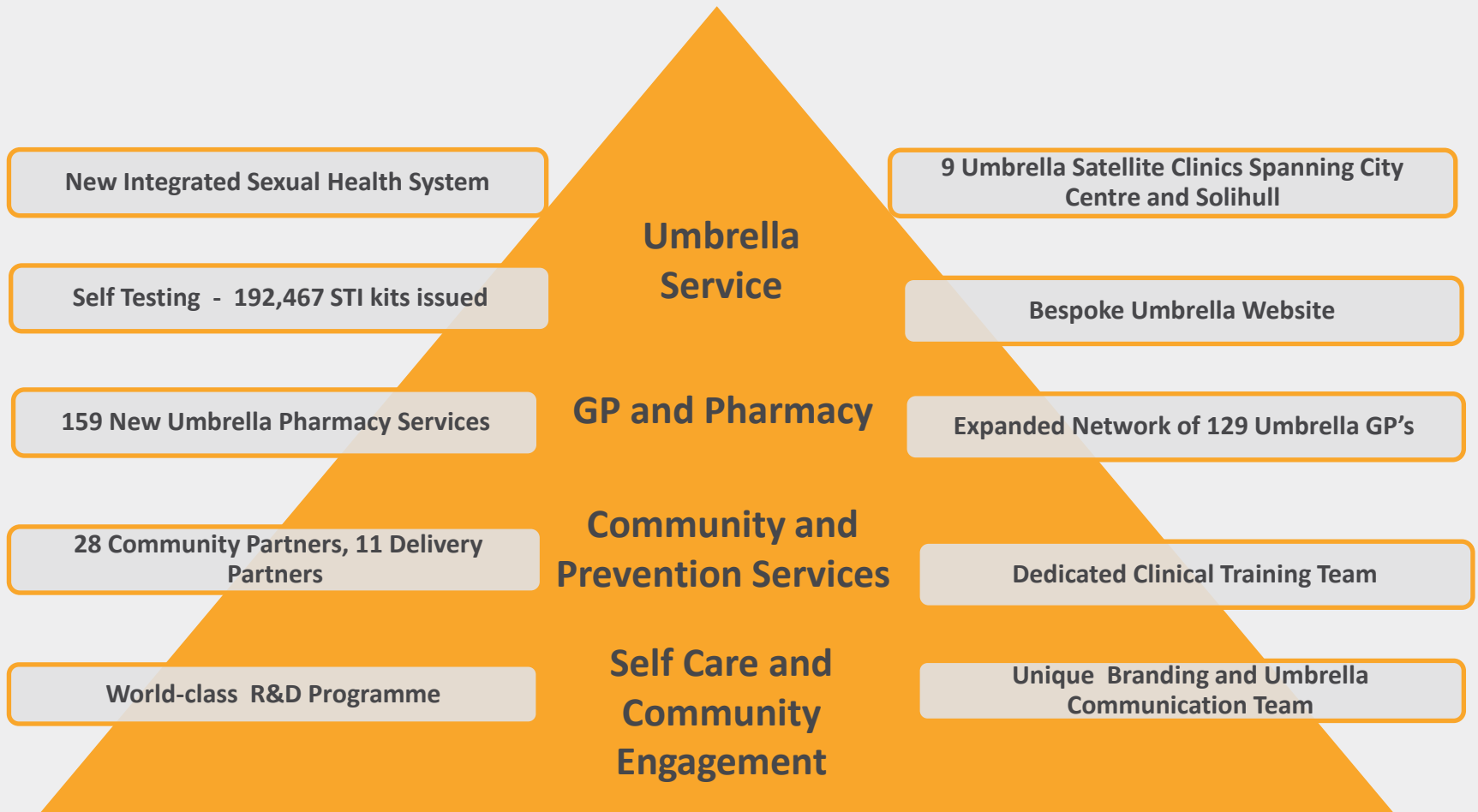
## **Contract Re-Procurement**

- Current Umbrella contract ends on 9<sup>th</sup> August 2022
- Re-procurement process has commenced

**Oversight and Scrutiny Committee**  
**February 16<sup>th</sup> 2021**



# **Umbrella's First 5 Years (Aug 2015-Aug 2020) Key Achievements**





# The First 5 Years – in numbers

*(10 August 2015 to 31 July 2020)*

## Umbrella Delivery Partners

- **40%** increase in GPs (92 to 129)
- **30,479** GP fitted LARC's
- Pharmacies increased from 98 in 2016 to **159** (from August 2020)
- **160,489** pharmacy interventions (August 2017 to July 2020)
- **3,029** Chlamydia screens in GP's 15-25 age group (**8%** positivity rate)
- Over **2,000** sexual assault interventions by rape & sexual violence project advisors

## Umbrella Clinics/Screens/Tests

- **496,067** clinic attendances
- **192,467** STI kits issued
- **15,445** under-18 contraception
- **260,996** HIV tests
- **162,878** total Chlamydia screens for 15-25 age group (**11%** positivity rate)
- 7,275,927 hits on website
- Over 40 campaigns - HIV, Pride, Chlamydia, Fresher's week, Vulnerable Young People, General awareness

# Covid-19 The Journey So Far & Umbrella's Response

## First National Lockdown 23 March 2020

Stopped walk ins/closed clinics

Tele/Vid F2f urgent/Med clinics

Staff repurposed core staff retained

May – July recovery plans – reopened clinics

\* September shortage of STI kits. Mitigations in place

## Second National Lockdown 5/11/ 2020 to 5/12/2020

Satellite clinics closed WSC/Boots CC retain core service

### ***BASHH – Covid-19 guidelines***

Confirmed STI  
Under 18 years  
Test results queries  
Syphilis queries  
PEPSE  
Sexual Assault

Pharmacies and GP's continuing to provide Sexual Health Services

Ongoing comms to Pharmacies, GPs, weekly updates with BCC/SMBC

## Third National Lockdown 5/01/2021

4 Jan reopened STI kit website limited stock

Retained core service from Boots/WSC, Sol

Delivery partners RSVP, BLGBT, Loudmouth operating stop f2f activity phone service only

11.01.2021 increase in COVID-19 cases.  
Boots CC closed.  
Operating from WSC & Boots Sol only



# Covid -19 The Journey in numbers

Total no. of incoming calls	Apr-20	May-20	Jun-20	Jul-20	Aug-20	Sep-20	Oct-20	Nov-20	Dec-20	Total
	2,416	1,896	6,064	8,163	9,350	12,119	12,268	10,677	8,304	71,257

No. of telephone consultations	Apr-20	May-20	Jun-20	Jul-20	Aug-20	Sep-20	Oct-20	Nov-20	Dec-20	Total
	935	1,088	2,070	3,899	3,129	4,050	3,919	3,381	3,028	25,499

No. calls converted for f-2-f consultation	Apr-20	May-20	Jun-20	Jul-20	Aug-20	Sep-20	Oct-20	Nov-20	Dec-20	Total
	383	281	367	619	673	1,024	1,030	968	1,039	6,384

No. of video consultations	Apr-20	May-20	Jun-20	Jul-20	Aug-20	Sep-20	Oct-20	Nov-20	Dec-20	Total
	0	145	84	150	131	172	152	105	67	1,006

Total face to face clinical activity	Apr-20	May-20	Jun-20	Jul-20	Aug-20	Sep-20	Oct-20	Nov-20	Dec-20	Total
	625	1,034	1,458	1,502	1,359	2,011	1,983	1,782	1,716	13,470

Sexual abuse including rape	Apr-20	May-20	Jun-20	Jul-20	Aug-20	Sep-20	Oct-20	Nov-20	Dec-20	Total
	11	11	27	30	32	38	34	35	24	242

STI kits	Apr-20	May-20	Jun-20	Jul-20	Aug-20	Sep-20	Oct-20	Nov-20	Dec-20	Total
No. STI kits issued	2,818	3,448	4,406	5,742	5,434	937	746	741	639	24,911
No. STI kits returned	1,906	2,168	2,971	3,802	3,122	884	649	472	514	16,488

# Covid – 19 response

## What has worked well

- Staff response – team effort, professionalism
- Service maintained BASHH – Covid-19 guidelines
- Telephone consultations
- Vidyo consultations
- Postal Prescription clinics
- Revised protocols to support Pharmacies
- Fast track pathway to GPs
- Regular engagement with BCC/SMBC
- Commenced PrEP in October 2020

# Strategic Plans Period 2020-2022

## We will

- Align plans with Sexual Health Strategy in England
- Tackle late diagnosis of STIs and address the stigma of STIs and HIV
- Establish new BME partnerships
- Integrate services that “evidence based”
- Expand and develop GP and Pharmacy network
- Increased access for the most vulnerable groups, < 18 year olds, young people, and looked after children
- Provide an integrated, multidisciplinary model of care for women affected by sexual and domestic abuse

## How

- Increase health promotion; Embed PrEP into mainstream service provision, work with “Fast Track Birmingham” to eradicate HIV
- Engage with prospective third sector BME organisations
- Outcomes from Umbrella R&D
- Enhanced Tier 2 pharmacy service, robust clinical pathways to GP partners, new GP tender
- Build on successful YP partnerships, developed, notably with Birmingham Children's Trust
- Collaborative partnership with RSVP and BWAID