

Education & Children's Social Care Overview & Scrutiny Committee

Annual report by Cllr Jayne Francis, Cabinet Member for Education, Skills & Culture

11 September 2019



Priorities for the year ahead

- Supporting Birmingham's bid to become a Child Friendly City, with Birmingham schools' success in UNICEF's Rights Respecting Schools programme as a platform.
- Encouraging more schools to join the Rights Respecting Schools programme and ensuring children, young people and schools benefit as much as possible from the Commonwealth Games.

Priorities for the year ahead

- Improving achievement and attainment for all children and young people in Birmingham.
- Helping young people into adulthood, to develop life skills, be ready for work and lead fulfilling lives
- Increasing the number of children and young people participating and engaging in learning
- Ensuring there is appropriate, high-quality provision across the city in all communities from Early Years through to Post 16

Overview of Education in Birmingham

443

schools



184,980 pupils

27 Nursery Schools

	Birmingham	Nationally
BME	66.6%	28.9%
EAL	35.8%	17.3%
FSM	28.9%	15.2%
SEN	17.8%	15.5%

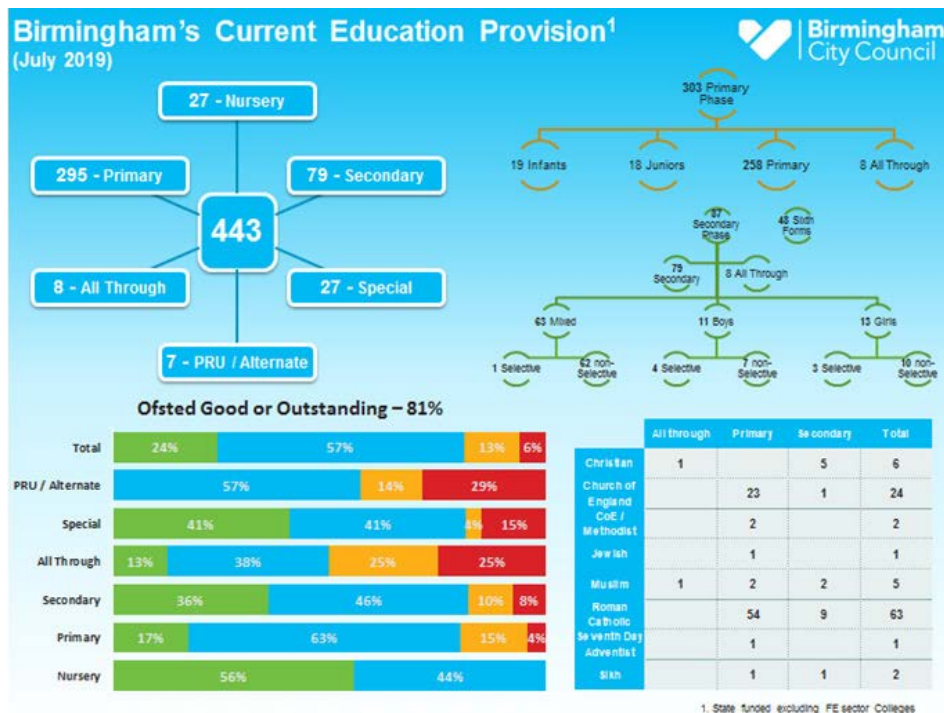
1221 Early Years Settings

81%

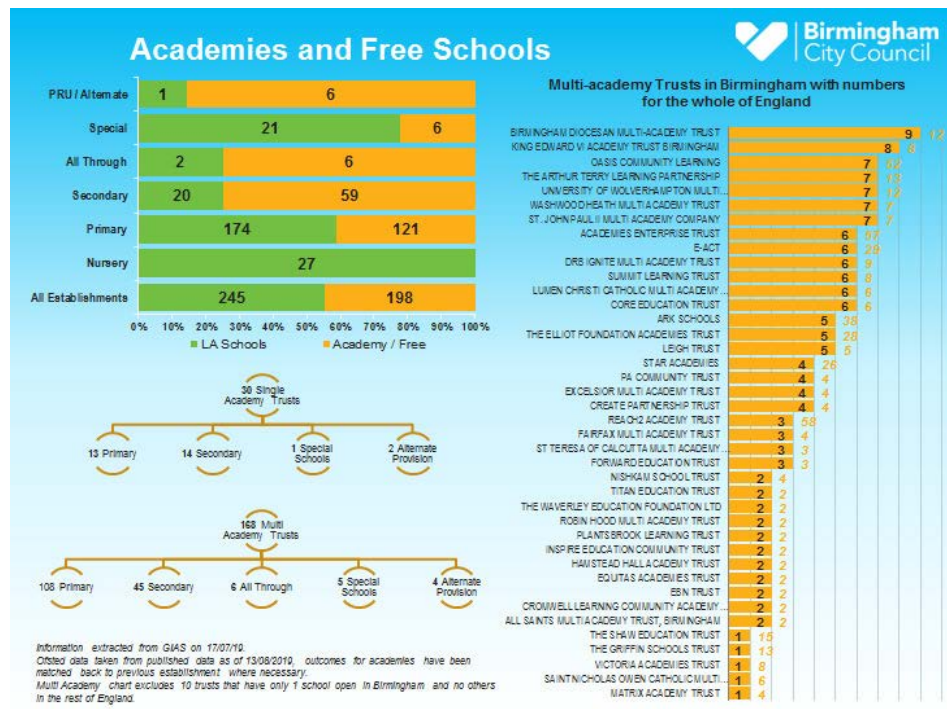
GOOD

OR OUTSTANDING

Overview of Education in Birmingham



Overview of Education in Birmingham



School budget deficits

£1,188,833m

total funding

£542.858m

direct to academies & free schools

£645.975m

for LEA maintained schools

In 2018/19

53 = £12.573m

schools with deficits

In 2017/18

37 = £10.952m

schools with deficits

School admissions and fair access

14,907

pupils offered secondary places

858

families' preferences not met

14,184

pupils offered primary places

233

families' preferences not met

£321,000

capital investment into upgrade of IT system to support school admissions with new portal