



# NATURALLY BIRMINGHAM: FUTURE PARKS ACCELERATOR

Sustainability and Transport  
OSC

Hamira Sultan, FPA Director

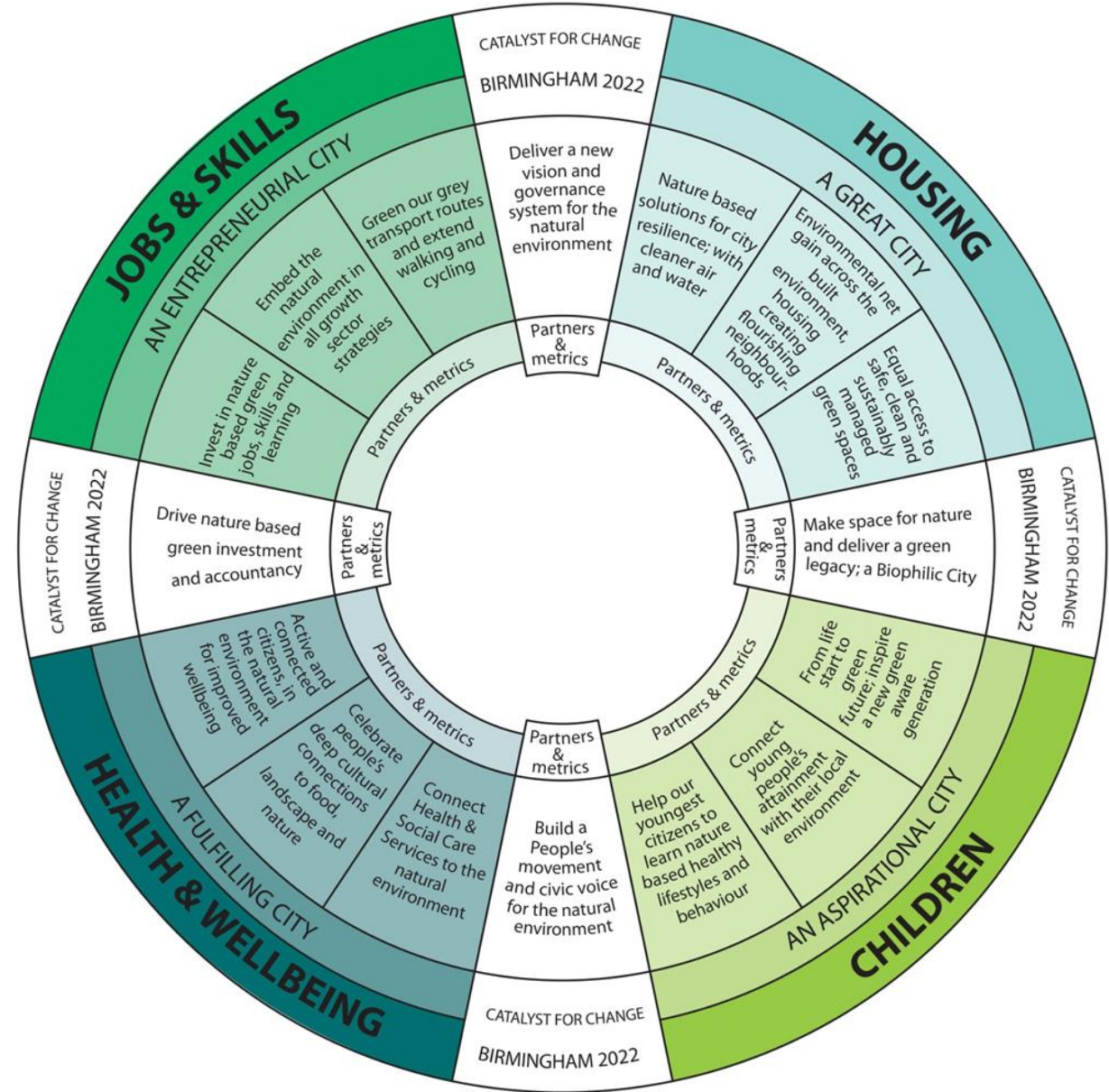


# INTRODUCTION

- What is Future Parks Accelerator?
- What do we mean by Environmental Justice?
- Opportunities to link up agendas

# NATURALLY BIRMINGHAM'S VISION

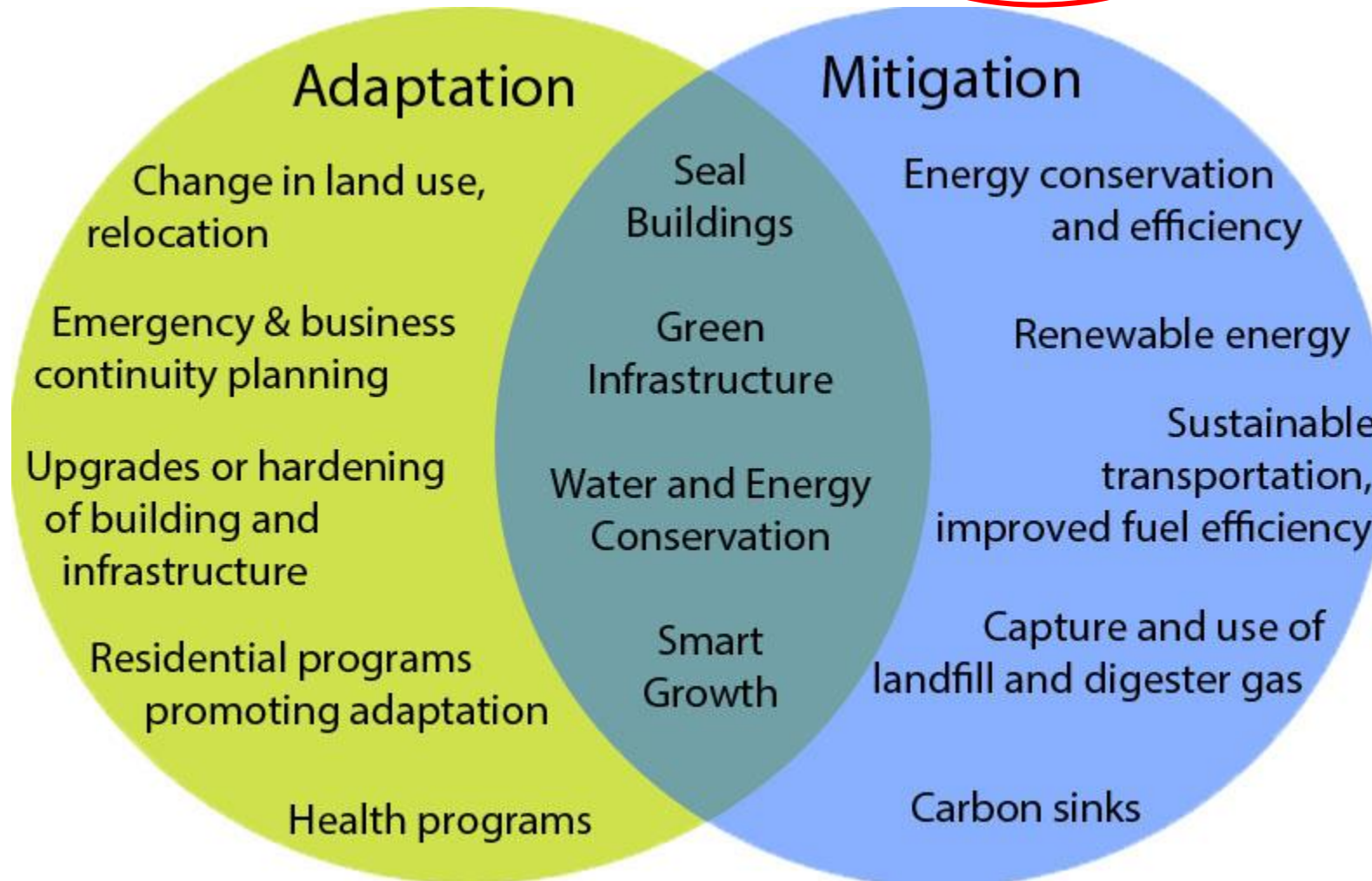
- This wheel diagram represents the original vision for Naturally Birmingham, at the time of the bid in 2019.
- The city set itself 5 strategic outcomes around Jobs & skills, Housing and the built environment, the future of children, health & wellbeing, and maximising the benefits from hosting the 2022 Games.
- All the aspirations listed are derived from the 2018-2022 Council Plan.





# TWO DIMENSIONS TO CLIMATE CHANGE

- Climate change – **mitigation** (tackling causes) vs **adaptation** (changing way we live)



Centre for Clean Air Policy, 2020

# YOU SAID...WE DID...

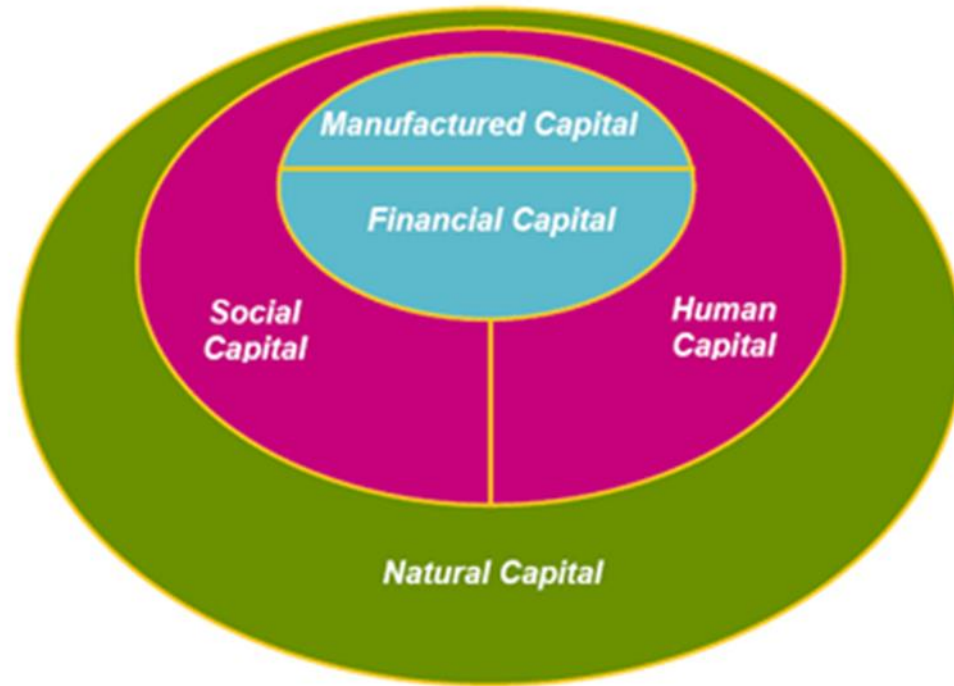
Outcomes for Heritage		Outcomes for people	Outcomes for communities	
Better managed	In better condition	Developed skills	Your local area/community will be a better place to live, work or visit	Your organisation will be more resilient
'Naturally Birmingham' Objectives				
Integrated green neighbourhood and well-being plans – 20 minute neighbourhoods and the Dawberry Fields Effect	Better managed parks and greenspaces – CWG legacy funding to support parks foundation, communal gardens, Green User Guide	New workforce and community skills – You tube Skills showcase	A Peoples Movement and Civic Voice for the Natural Environment – Earth Stories and The Green Bham Website	Review of corporate financial mechanisms and land valuation formula – sponsorship, and crowdfunding
Draft Outcomes Framework for Health & Parks - 20 minute neighbourhoods	Organisational capacity – Green Champions Programme		New cohort of people and young generation engaged in parks – Park Stars and Mentoring Programme	Preparation for Natural Capital Investment Strategy – <b>Nick</b>
	25 year Nature Recovery and Green Infrastructure Strategy - Eco Mapping work BBCWT			Re-alignment of base budgets – <b>Nick</b>
Future Parks Board				
'Naturally Birmingham 5 Frameworks				
Framework for Healthy City	New Governance Framework	Framework for Environmental Justice	Framework for Citizen Engagement	Framework for Sustainable Finance

# ALIGNMENT OF CITY POLICIES AND INITIATIVES

Route to Zero	New Build	Retrofit Housing	Transport & EV charging	Waste	Energy	Natural environment
Our Future City Plan 2040 6 moves	City of inclusive Growth	City of centres	City of connections	City of layers	City of Creativity & innovation	City of Nature
Birmingham Design Guide		Healthy living & working places	Streets & spaces	Birmingham ID	Efficient and future ready	Landscape and Gi
West Midlands Design Charter	Engagement & stewardship	Health & wellbeing	Connectivity & mobility	Character	Future readiness	? No mention?
FPA 5 design principles	Equitable design	Sustainable neighbourhoods	Green & blue Infrastructure	Climate change design		Biodiversity design (& Green & blue Infrastructure)
Possible unification?	City of prosperity for all	City of neighbourhoods	City of connections	Circular City		City of Nature
Sustainable Development Goals	1. Poverty/income 8.Inclusive growth 11. Sustainable cities 17. Global partnerships	6. (Water) Sanitation 7. Energy 9. Resilience 11. Sustainable cities 12.Sustainable consumption 13.Climate change 14.Ocean protection	2. Hunger & Food 3. Health 4. Education & learning 8. Full employment	4. Lifelong learning 5. Gender equality 9. Resilience 10. Social equity 11. Sustainable cities 16. Justice & inclusive societies (6,11,13,16)- Voice		2. Hunger & Food 6. Freshwater 11. Sustainable cities 13.Climate change 14. Ocean protection 15.Land use & ecosystems
FPA Frameworks	Sustainable Finance Framework	Environmental Justice Framework	Healthy City Framework	Citizen Engagement Framework		Green Governance Framework
5 Capitals	Financial Capital	Manufactured capital	Human capital	Social capital		Natural capital

# ENVIRONMENTAL JUSTICE – KEY LINK TO CWG LEGACY OF TACKLING INEQUALITIES

- Clustering of poor outcomes – all linked with lack of access to poor quality green space
- Levelling up agenda
- How nature connects to all capitals



**Financial** -real estate, loans, grants, money;

**Manufactured**- the built environment and all infrastructure including digital;

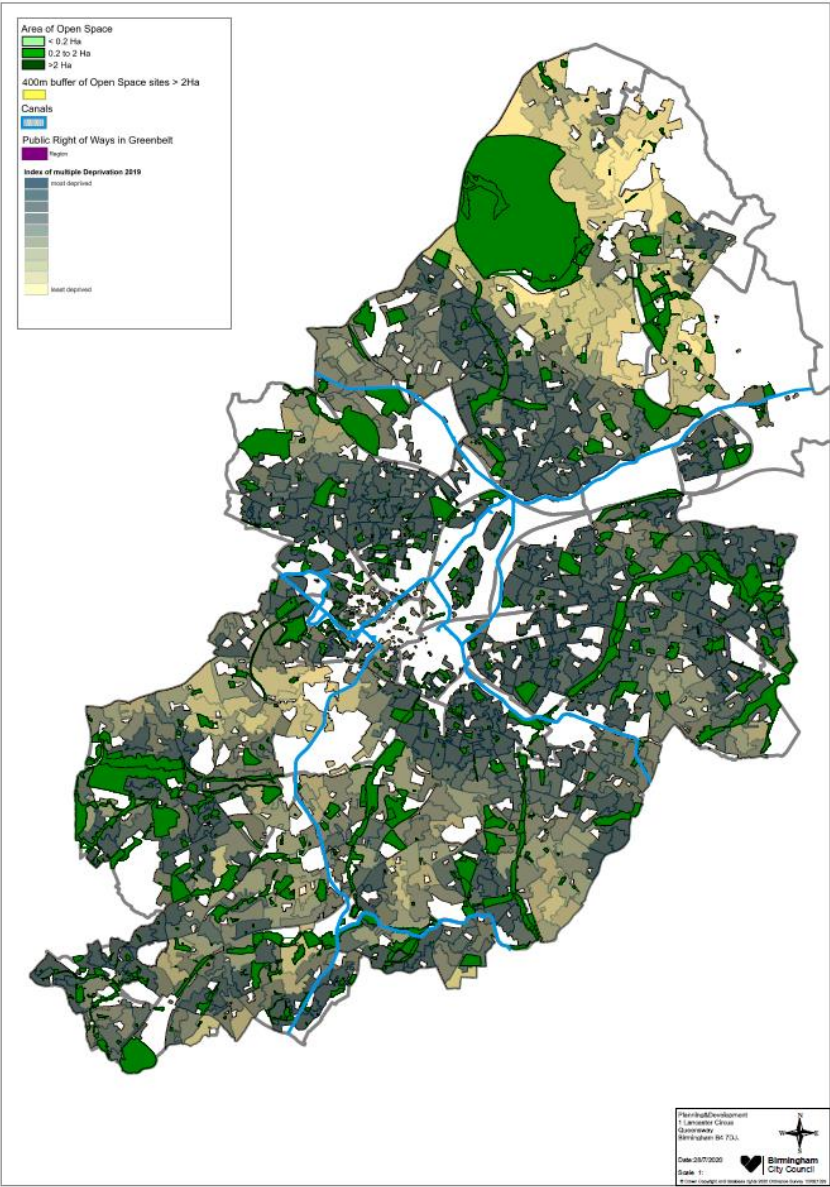
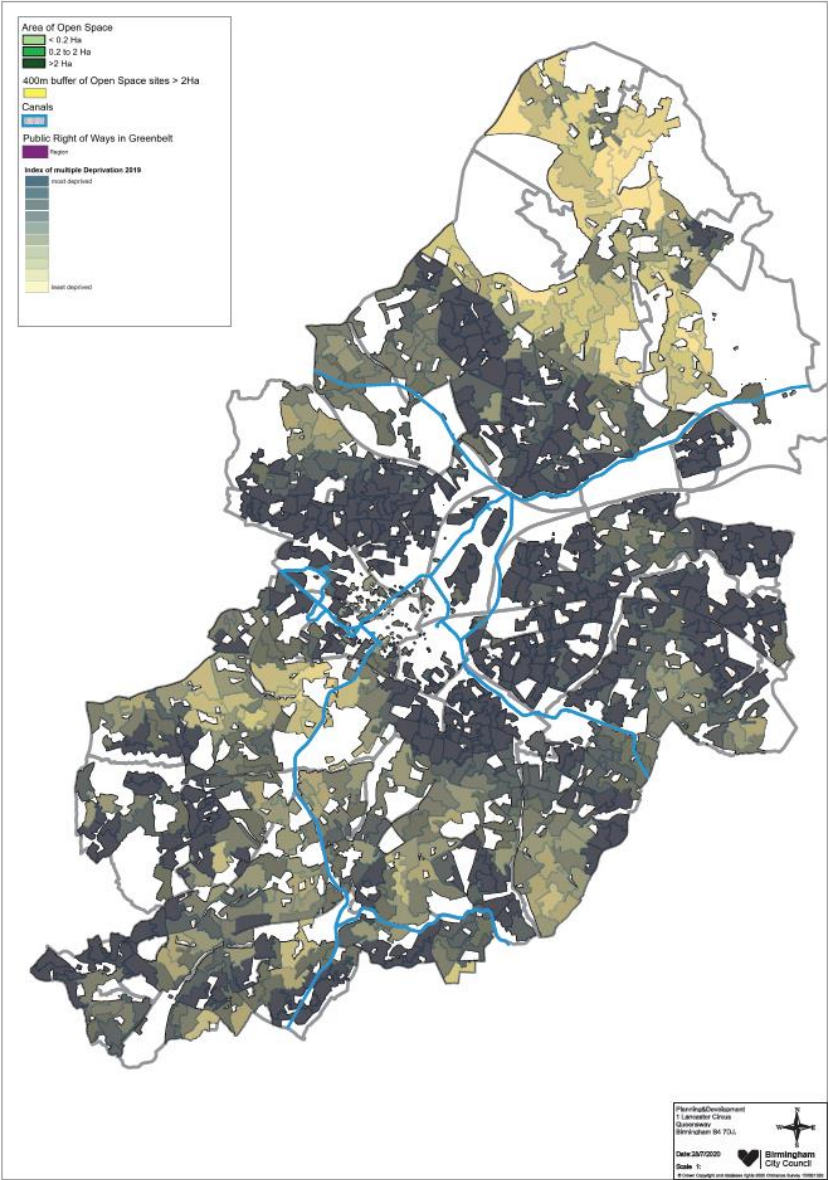
**Human** -captures skills, knowledge, education and health;

**Social** -culture, community & governance;

**Natural** -all natural resources

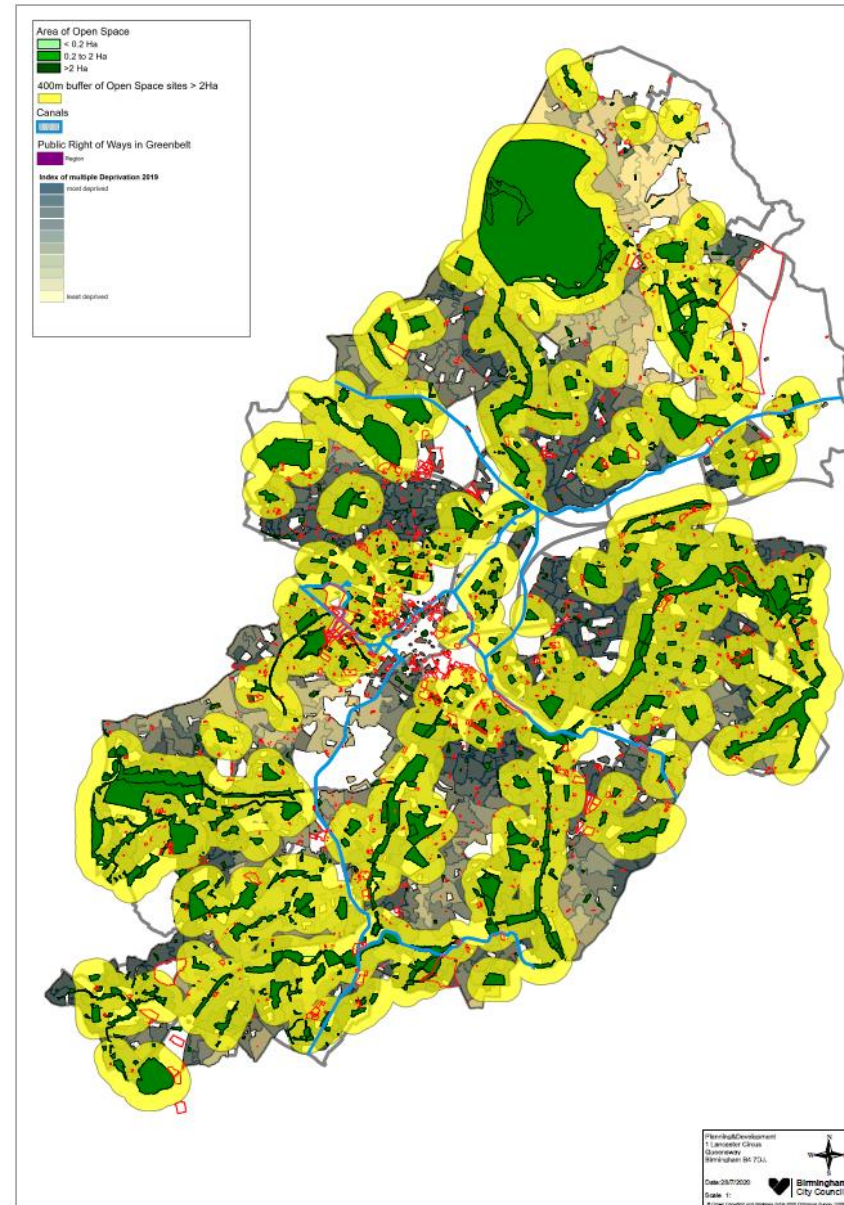
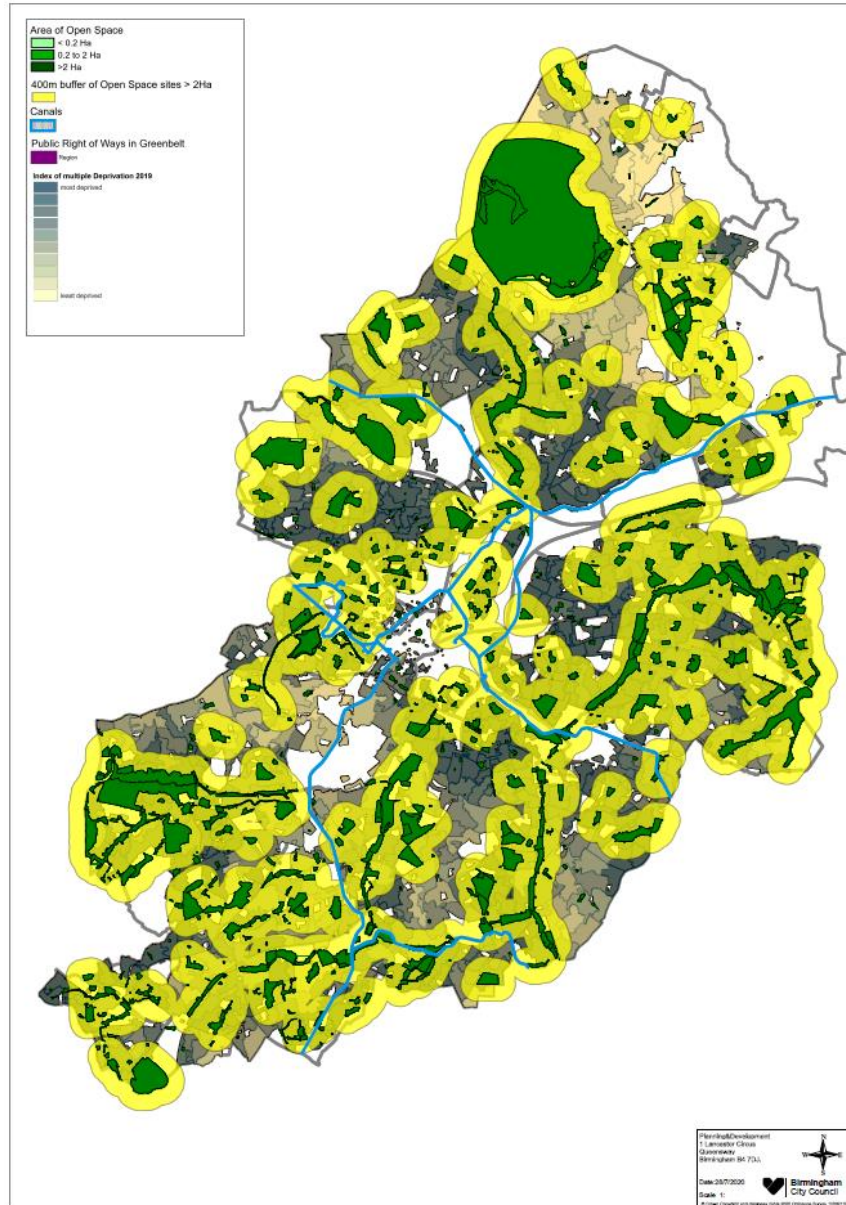


# COMPOUND MAP – IMD AND POS

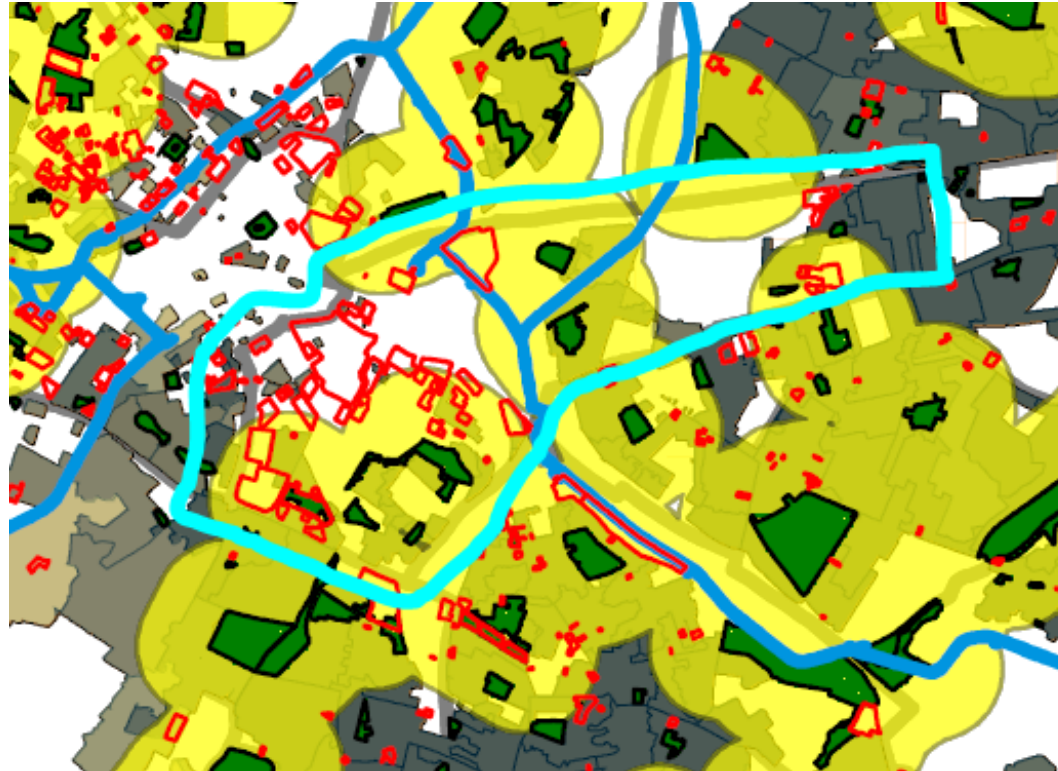




# COMPOUND MAP – IMD AND POS



# COMPOUND MAP – IMD AND POS



Bordesley and Highgate Ward

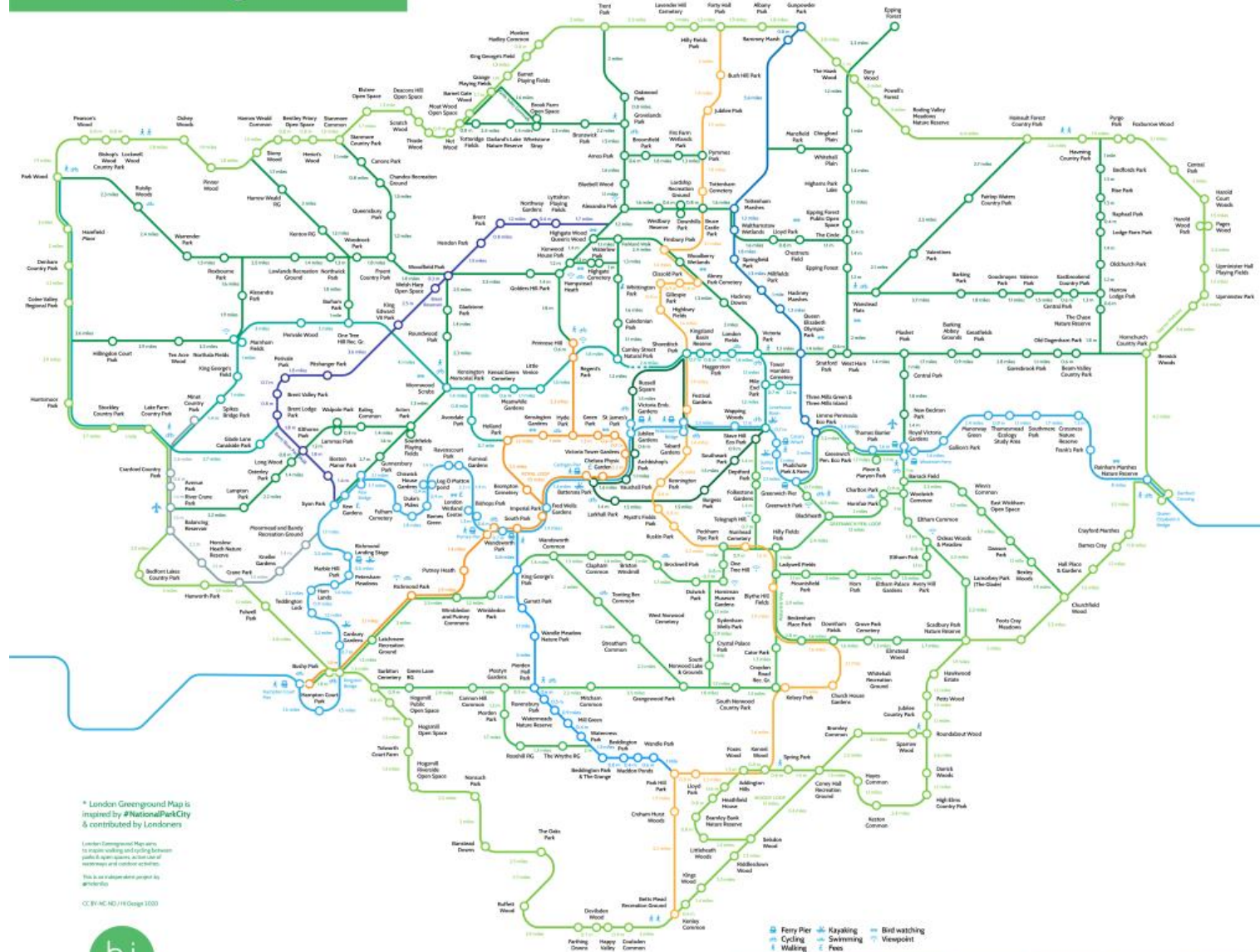
A	B	C	F	H	I	L	M	N
Constituency	Wards	Canopy % (25% baseline target)	PPF+ POS Ha /1000 (Ward level) BDP Minimum threshold 2Ha.	2019 Decile (1 = 10% most deprived nationally)	2018 Mid-year Population estimates by ward	Projected Area population at 2031	Revised PPF+POS/ 1000 if no change in supply	Percentage Change
Ladywood	Bordesley & Highgate	9.66	1.02	1	15,760	38,604	0.42	-59%
Ladywood	Ladywood	14.6	0.75	2	28,420	46,695	0.46	-39%
Sutton Coldfield	Sutton Walmley & Minworth	19.2	6.85	7	15,980	23,863	4.59	-33%
Ladywood	Newtown	12	1.24	1	14,620	20,140	0.90	-27%
Ladywood	Soho & Jewellery Quarter	18.8	0.99	2	27,130	36,116	0.75	-25%
Perry Barr	Perry Barr	20	5.72	4	20,620	26,200	4.50	-21%

# LINKING UP AGENDAS

- How does FPA and Sustainability link up?
- Both want to see green spaces being maximised as assets
- Both want to tackle inequalities
- Linked in with CWG agenda – both Legacy and Sustainability working groups
- Learning from Witton Lakes pilot – green spaces not only offer a chance to increase Physical Activities, but also increase connectedness and wellbeing
- Seen great success of Active parks – but funding is reducing
- So what are we doing?
  - Supporting Birmingham Open Spaces Forum to operate more like a Parks Foundation – 130 Friends of Park groups
  - Sponsorship of parks
  - Working with Wellbeing Service to make better use of green spaces in conjunction with wellbeing centres
  - Making the invisible more visible



# London Greenground \*



# WHAT DO WE NEED THIS COMMITTEE TO WORK THROUGH?

- Decisions about development, especially housing –
  - WHERE are we going to build?
  - Are we going to reconsider the balance between size of development and loss of nature?
  - How much POS are we willing to lose?
  - And where we do lose it, what are we going to do enhance it?
- Decisions about finance – is the system going to support nature, biodiversity and green infrastructure to help us continue adaptation to climate change?
- Are we doing enough to allow ALL our residents to engage with the green space and climate change agenda – whatever their resources and/ or the scale they want to work at?
- Are we going to hold other parts of the Council to account to ensure they fulfil their role in supporting green spaces and green infrastructure?

# QUESTIONS