

**BIRMINGHAM COMMUNITY
SAFETY PARTNERSHIP**

WORKING TOGETHER FOR A SAFER CITY

Birmingham Community Safety Partnership

Report to

Neighbourhood and Community Services Overview & Scrutiny Committee

18 February 2016

CONTENTS	Page
Foreword by Mashuq Ally, Head of BCSP	3
West Midlands Police & Crime Commissioner and Community Safety Fund Arrangements	4
Introduction	5
BCSP Structures diagram	7
BCSP Central Thematic Activity 1 April - 31 December 2015 - Overviews	8
• Business Crime	8
• Cross Cutting	8
• Domestic Violence	8
• Mobilising Communities	9
• Vulnerable People	9
○ Vulnerable People Case study	9
• Youth Violence	10
○ Youth Violence Case Study	10
Local CSP Activity 1 April - 31 December 2015 Overviews	12
○ Local CSP Case Study	12
• East Quadrant	13
• North Quadrant	14
• South Quadrant	14
• West & Central Quadrant	14
Annex A BCSP Central Strategic Groups, Detail of Interventions	16
• Business Crime	16
○ Case Study – Facewatch outcomes	16
• Cross Cutting	21
• Domestic Violence	26
• Mobilising Communities	29
• Vulnerable People	30
○ Barnardos Case Study	31
○ BRAVE Case Study	33
• Youth Violence	37
○ Youth Violence Case Study	38
Annex B Quadrant / Local CSPs, Detail of Interventions	39
• East Quadrant	39
• North Quadrant	41
• South Quadrant	45
• West & Central Quadrant	49

REPORT ON BIRMINGHAM COMMUNITY SAFETY PARTNERSHIP

FOREWORD

Welcome to this report of the Birmingham Community Safety Partnership (BCSP) which has been prepared for the Neighbourhood and Community Service Overview & Scrutiny Committee meeting on 18 February 2016.

This current financial year has also been the second part of the two year programme initiated in 2014. That programme identified five priorities to be taken forward centrally (now six with the addition of Cross Cutting in 2015), together with support for local interventions through the four Local Community Safety Partnerships (formerly known as Local Delivery Groups or LDGs).

Community Safety sits within my department, the Equalities, Community Safety and Cohesion service. We have worked closely with all partners to deliver on stated BCSP aims and objectives, which make a real difference to the lives of citizens of the city. However, we know that the issues of crime and anti-social behaviour are still major concerns for many people in and around the city.

Over the recent months we have undertaken a significant review of the BCSP facilitated by the Peer Support Group. I would like to personally thank the Partnership Board for its continued support and focus in respect of the commitment shown by all partners at a time of significant change and uncertainty.

I would also like to thank the Chairperson, Assistant Chief Constable Marcus Beale, for stepping in to the role as Chair of the Executive Board, which has presided over the BCSP review.

Dr Mashuq Ally
Assistant Director
Equalities, Community Safety and Cohesion

WEST MIDLANDS POLICE & CRIME COMMISSIONER

The Police Reform and Social Responsibility Act 2011 requires the Police and Crime Commissioner (PCC) to have regard to the relevant priorities of each Community Safety Partnership (CSP) in the region; and to co-operate with them in relation to that police area.

The PCC power has the power to:

- Make grants for the reduction of crime and disorder.
- Hold CSP's to account by calling a meeting to discuss strategies, which the PCC will chair. (The PCC must consult with the responsible authorities prior to calling a meeting, and can only do so if reasonable and proportionate.)
- Request a written report from a CSP in the event that the PCC feels it is not carrying out its functions in an effective and efficient manner.

Over the period of this report the PCC was Derek Jamieson (standing for re-election in May 2016).

The Deputy PCC was Cllr Yvonne Mosquito, with special responsibility for Birmingham.

The PCC grant to Birmingham for the reduction of crime and disorder is the Community Safety Fund, which is discussed below.

Community Safety Fund

The PCC allocates Community Safety Fund (CSF) grants across the region, using a formula based on the size of the local population. For both 2014-15 and 2015-16 the CSF allocation to Birmingham was £2,498,000.

INTRODUCTION

The Birmingham Community Safety Partnership (BCSP) comprises representatives from public sector agencies, elected officials and members of the community. The 1998 Crime & Disorder Act (and subsequent legislation) outlined the requirements for English cities to put in place Partnerships which would focus on strategic approaches and delivery arrangements in respect of crime and crime reduction initiatives. The legislation also identified the key agencies in respect of these activities, and placed a statutory duty on them to form a partnership which considered the crime affecting the local authority area and to set in place strategies and interventions to tackle the problems.

In Birmingham the Partnership has been strengthened by inviting other partners and agencies in this enterprise. In November 2013, arrangements were put in place to invite up to four community members to contribute to the Partnership.

The full list of Board members is detailed below:

- Birmingham and Solihull Mental Health Foundation Trust
- Birmingham Chamber of Commerce
- Birmingham City Council
- Birmingham Cross City Clinical Commissioning Group,
- Birmingham South & Central Clinical Commissioning Group
- Birmingham Voluntary Service Council
- Castle Vale Community Housing Association
- Community Representatives (four)
- National Probation Service
- Office of the Police and Crime Commissioner
- Political representation from all three main parties
- Registered Housing Providers
- Sandwell & Birmingham West Clinical Commissioning Group
- Staffordshire and West Midlands Probation CRC
- Victim Support
- West Midlands Fire Service
- West Midlands Police
- Women's Aid

The BCSP's reach is across the whole city through a highly-developed structure, broken down below as Central and Local delivery mechanisms.

Central Structures

Centrally, the Birmingham Community Safety, Police and Crime Board acts as the key strategic body for the Partnership. A Partnership Delivery Group (PDG) is in place to support and guide work on local initiatives and projects in respect of delivery and operations.

The BCSP structure is set out below. The PDG addresses operational matters with particular emphasis on events that can have city-wide impact, such as providing funding for the policing operation of the Frankfurt Christmas Market. The Group also provides support on issues which may affect local areas but where a central approach is required.

In spring 2014, the Birmingham Community Safety Police and Crime Board agreed three strategic outcome measures for the Partnership (detailed below) which would be used to track and monitor the overall performance.

1. Reduce total recorded crime
2. Increase perceptions of safety
3. Reduce reoffending

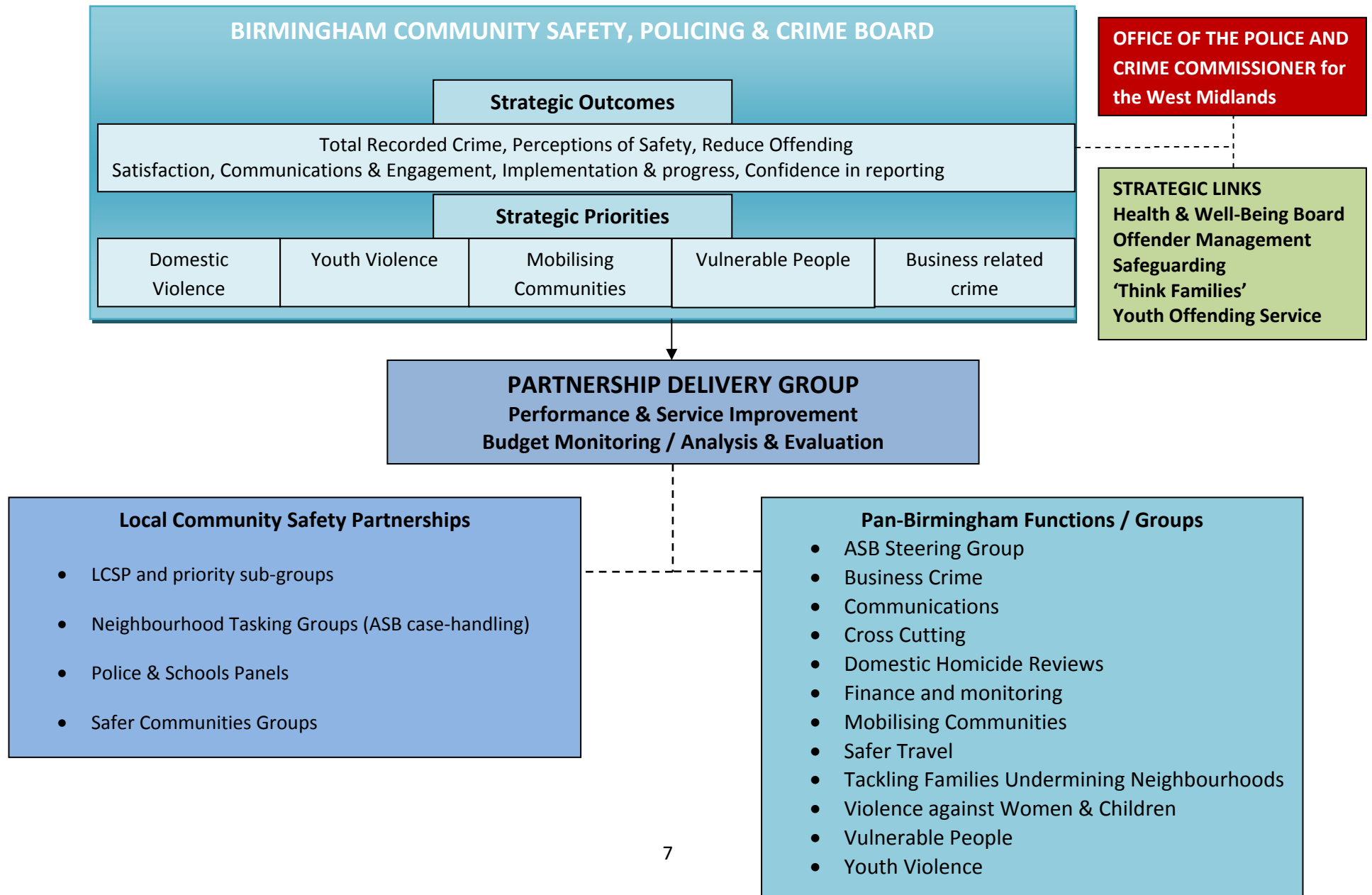
The Birmingham Community Safety Police and Crime Board also has six overarching strategic thematic priorities, each having a delivery plan and performance framework relevant to the subject area. The details of this are set out in Annex A below.

- Business Crime
- Cross Cutting
- Domestic Violence
- Mobilising Communities
- Vulnerable People
- Youth Violence

Local Delivery Mechanisms

In Birmingham there is a long tradition of initiatives to support Local Delivery Groups (LDGs) working to address crime and disorder at local levels and respond to local concerns. The principle vehicle for this is the Neighbourhood Tasking Groups which tackle localised issues of crime and anti-social behaviour affecting communities. Community safety work is enhanced at a local level through cross departmental and partnership working across the full range of business (e.g. domestic violence and ASB). In 2015 LDGs became Local Community Safety Partnerships (LCSPs).

The Structure of the BIRMINGHAM COMMUNITY SAFETY PARTNERSHIP



BCSP CENTRAL THEMATIC ACTIVITY OVERVIEW 1 April to 31 December 2015

For the period of 2014-16 BCSP agreed to five overarching strategic thematic priorities, increased to six during 2015 with the addition of the Cross Cutting Theme. This was the first occasion when priority planning had stretched beyond a single business year.

A summary of these workstrands per priority is set out below, detailed progress as at 31 December 2015 is presented in Annex A.

Business Crime

There are three strands to tackling business crime: -

- Business Crime Engagement & Co-ordination (across all delivery strands)
- Night-time Economy
- Day-time Economy.

Cross Cutting

There are three strands to cross cutting. These are: -

- Offender Management.
- Safer Travel
- Youth Offending Service.

Domestic Violence

Interventions commissioned to address Domestic Violence (DV) in Birmingham are based on evidence from the DV Needs Assessment and deliver against the Birmingham Violence Against Women Strategy 2013-15 objectives, which are to:

- Protect victims and children from harm, enabling them to access specialist advice, advocacy, support and protection commensurate with need. Provide specialist services (IDVA, ISVA¹), support the MARAC² process and commission DV group work. Identify cases of domestic violence early to prevent escalation and develop fit for purpose performance monitoring arrangements. Hold perpetrators to account to reduce risk and act as a deterrent
- Increase public awareness to reduce public acceptability of domestic violence. Develop engagement locally and promote prevention with young people and adults.
- Develop evidence-based multi-agency services with partner agencies in Birmingham and the West Midlands. This includes, where applicable, congruence with the Victim Charter Action Plan and using findings from Domestic Homicide Reviews.

Mobilising Communities

¹ Independent Domestic Violence / Sexual Violence Adviser.

² MARAC – Multi agency risk assessment conference

Aim: To increase community engagement in Community Safety and respond to Local Concerns. This is delivered through three workstrands.

- Road Safety.
- A small Grants Programme, where community groups at grassroots level are encouraged to deal with local problems and a sum of up to £5,000 can be requested. (Note from April 2015 this funding was granted to LCSP's).
- A Community Grant Programme where more established community groups could apply for grants up to £10,000 on a match-funding basis.

Vulnerable People

This strand oversees seven interventions which support socially disadvantaged people bringing additionality to mainstream services.

CASE STUDY

SIFA FIRESIDE PSYCHOLOGICAL WORKER

Client RM - Sessions attended: 5

RM is a 33 year old Polish man who first came to SIFA in December 2015. He was very anxious and distressed due to his recent experiences of being trafficked, as he had been brought to the UK on the promise of work. He was then exploited by his employer and unable to leave for some months. An additional source of distress was concern that if he didn't get his benefits sorted out he was at risk of losing his flat. As a result he was referred to a Welfare Worker, allowing SIFA to focus on reducing his anxiety and building coping skills. At the end of the first session it was agreed to conduct a fuller assessment of his needs.

During the assessment it emerged that RM was feeling suicidal so a risk assessment was carried out and the offer of support outlined. His emotions were discussed and an action plan agreed which included referral to 'in house' nurse and mental health surgeries. He was also referred to the Birmingham Law Centre and the CAB for advice. His language skills were another issue so he was booked to attend ESOL classes.

RM is now attending our SIFA Fireside Job Club and has started applying for work in the building trade. His mood has improved, he feels confident about the future and expects to be back in work soon.

The full list of interventions within the Vulnerable People's Delivery Group are:

- Aurora (WM Fire Service), engaging with 'at risk' young people, providing structure in chaotic lives, leading to engagement with education.
- Birmingham Space Barnardos, providing refuge and life-skills coaching to address CSE.
- BRAVE (Victim Support), providing practical and emotional support to victims of ASB.

- KIKIT, tackling Khat use and criminal behaviour among the Somali community.
- Mental Health First Aid Training, well-respected training for front-line staff when providing services to people suffering from mental health.
- Sifa, bespoke support for the homeless (mostly males) often afflicted by mental health and / or substance misuse issues.
- Stop HATE UK, providing alternative support to victims of hate crime who are reluctant to report to formal agencies.

Youth Violence

This work embraces young people from 10 to 29 years old, with the emphasis on Prevention, Intervention (inc. Offender Management and Diversions) and Engagement.

This strand comprises a comprehensive series of interventions which impact in these ways either in part or whole with young people.

The interventions are:

- Miss Dorothy Prevention Programmes early prevention programme
- Police & Schools Panel For Alternative Providers
- Intensive Support & Mentoring Programmes
- Multi Agency Gangs Unit (MAGU) Barriers Fund
- Youth Service 'Adrenaline Rush'

Youth Violence Case Study

Youth Excellence Awards

This was an event aimed at celebrating the contributions of young people as individuals and good citizens/role models are recognised and valued. British values of respect and tolerance were also promoted through positive engagement with police and partners. In total 20 schools and 3 youth centres participated in nominating young people in the 10 categories, advertised via posters, social media and school websites. A nomination form was completed for each young person and the school decided which category was the most appropriate. There was an outstanding number of nominations outlining amazing stories of talent, generosity and spirit, demonstrating the extraordinary ways young people are contributing to their families and the wider community.

Many nominees had overcome significant barriers to their education, or difficult personal circumstances leading to poor commitment to school. These included overcoming illnesses or family illnesses where they had become the main carers.

A special 'Youth Service' award celebrated the contribution from 'young leaders' for their commitment in planning and delivering activities during half term and summer holidays. This included those leading youth councils and influencing the spending of the centre budgets by attending meetings and liaising with Councillors and partners. The 'Significant Contribution to the Community' Award was won by a pupil who had raised over £6500

through fund raising events and had joined efforts with the local community and Councillors to save a local heritage site.

The overall winner of the 'Outstanding Individual Achievement' Award went to a pupil from Balaam Wood Academy. They arrived in England after fleeing a war torn village in Iraq, leaving behind all of their friends and personal belongings. Despite speaking no English and having no friends at the school this pupil has shown dedication and commitment to their studies which has resulted in them now attending a Sports College to pursue their passion for sports through further education.

At the end of the evening feedback from schools was extremely positive and many of them have stated they would wish to repeat the same style of event within their own schools in the future.

LOCAL CSP ACTIVITY OVERVIEW 1 April – 31 December 2015

BCSP has a long tradition of supporting local working through Local Community Safety Partnerships (LCSP's formerly LDGs) which address crime and disorder at local levels and respond to local concerns. Community safety work is delivered here through cross departmental and multi-agency working across the full range of activity (e.g. tackling domestic violence, road safety and ASB). The principle vehicle is the Neighbourhood Tasking Groups which identify issues of crime and anti-social behaviour at grass roots level and take steps to reduce them.

The four LCSP's deliver against planned priorities which support centrally agreed themes at local level, alongside pressing local concerns. The priorities at each of the 4 LCSP's are set out below, with details on progress by 31 December 2015 presented in Annex B below.

A very good example of LCSP activity occurred in response to shooting incidents in Hockley in October 2015. This is shown as a case study below.

Case Study of LCSP Working

Background

The Hockley/St George's Estate is located in South Newtown (South of New John Street West) and forms part of the Aston Ward. It comprises just over 1,000 properties located across nine High-rise blocks and a number of maisonette and street level properties. There has been considerable population churn in recent years, which has impacted on community cohesion. The estate has historically generated a high number of ASB complaints, both a neighbour nuisance type (noise between flats) and of more serious nature. In 2011 a significant Police and Housing operation led to a number of injunctions and possession orders against known criminals, which resulted in a drop in crime.

Recent Events

On 11 October 2015 four shootings took place outside the parade of shops at Great Hampton Row. Naturally this event increased concerns about personal safety for both staff and tenants. In response the Police mounted Operation Fry to tackle the gun crime and bring reassurance to the local community.

Response

A wider partnership meeting was held under the auspices of the Local Community Safety Partnership involving senior managers from BCC (Rob James, Dawn Roberts and Mashuq Ally); police Superintendent Andy Beard and Kate Foley (BCC Landlord Services) and Nicci Collins, Safer Neighbourhoods Partnerships Manager.

An approach utilising the PACE methodology was agreed: -

PACE:

- **PLAN** - detail what's going to happen, who is going to do it, how long it will take and how we know if it's complete.

- **ACT**
- **CONTROL/COMMUNICATE** - carefully watching what's being done in relation to what was planned. On track? On time? Consistent and timely reviews of progress and plan are critical. Keeping the scope in line with what was planned is a key element to success.
- **EVALUATE** - How did we do?

Agreed Actions

- Define geography of the area / Identify opportunities for data analysis / Provide Housing data, e.g. stock, turnover
- Obtain Neighbourhood Statistics regarding ethnicity
- Prepare a Problem Profile and a police analysis suitable for sharing with partners
- Share intelligence including specific families to enable multi-agency problem solving
- Identify and implement actions to improve the housing stock and estate in general
- Identify local schools
- Propose youth interventions
- Plan an engagement and communications strategy, including community reference group(s) and other interested parties
 - Identify other local resources / Provide a list of community and faith groups within the area
 - Map links with local establishments and potential partners
 - Create links with other strategic groups
 - Facilitate a multi-agency cohesive approach to problem solving in the area

Identify learning and tactical options which could be used in the future across the wider city to tackle similar issues.

These actions are still ongoing at the time of writing.

LCSP PRIORITIES - EAST QUADRANT

The priorities for Local Community Safety Partnership South for 2015-16 are as follows:-

- Business Related Crime
- Domestic Violence
- Mobilising Communities (which also includes Road Safety, Environment, Substance Misuse and Burglary)
- Preventing Violent Extremism
- Vulnerable People with a particular focus on Child Sexual Exploitation and Mental Health
- Youth Violence

NORTH QUADRANT

The priorities for the North Birmingham Local Community Safety Partnership for 2015-16 are as follows:

- Domestic Violence
- Young People – with a focus on Child Sexual Exploitation, DV and Healthy lifestyles.
- Mobilising Communities (Building Neighbourhoods Forum) which also includes
 - Road Safety
 - Environment
 - Place Management
 - Neighbourhood Tasking
 - Burglary
- Vulnerable People – with a Mental Health, Adult Safeguarding and services in the community.
- Business Related Crime
- Children and Families safeguarding.

SOUTH QUADRANT

The priorities for Local Community Safety Partnership South for 2015-16 are as follows:-

- Domestic Violence
- Young people (10-24yrs)
- Mobilising Communities (this is with a particular focus on theme of "Safer, Stronger, Sustainable Neighbourhoods")
 - a. Substance Misuse (particularly enforcement, drug use and dealing)
 - b. Road Safety
 - c. Environment
- Vulnerable People (safeguarding children, safeguarding adults, older adults, mental health)
- Business Crime & Partnerships

WEST & CENTRAL QUADRANT

The priorities for the West & Central Birmingham Local Community Safety Partnership for 2015-16 are as follows:

Vulnerable Adults

- Mental Health
- Homelessness
- Hoarding
- Domestic Violence (Forum)
- Safer Communities Groups

Vulnerable Youth

- Child Sexual Exploitation
- Youth Diversion
- Prevent

Local Priorities

- Third sector engagement
- Emerging Communities
- Neighbourhood Working

BCSP CENTRAL THEMATIC ACTIVITY OVERVIEW 1 April to 31 December 2015

BUSINESS CRIME

Strand 1 Engagement & Co-ordination (across all delivery strands) – Outcome Improved working, profile raising and engagement with business communities to tackle priority issues

- **Engagement Events (Grand Central, Get Safe Online)** events held for key stakeholders and wider business community for the launch and induction of Grand Central. A further event was held for the introduction of the Face Watch scheme.
- **Marketing Literature & Hand Outs**– A variety of publications have been purchased and distributed within the 4 LPU areas and publicity events. Funding was used to purchase leaflets publicising Action Fraud, Credit Card cons and Face watch. Furthermore a quantity of the WMP “Little Book of Big Scams” Vulnerable Edition & Business Edition booklets have been purchased and circulated locally.
- **City Wide FACEWATCH (FW) User Groups**– FW is a secure online crime & information reporting and networking platform. Since project launch on 1st October 2015 FW user groups have been created for all 11 Business Improvement Districts (BID) areas as well as a pan Birmingham Public Place Management user group (for better case management of reported street sleeping, begging, homelessness & public place ASB). Project management team and FW have engaged all 11 BIDs to brief, train and facilitate BIDs to start using the system. All but 1 BID area are now using FW to report low level crime & nuisance and share community intelligence.

Businesses can report low level crimes and nuisance within a 20 minute timeframe (including upload of CCTV) rather than wait for a routine police diary appointment. This can speed up an investigation by 14-21 days as officers are no longer required to collect CCTV DVDs and book viewing appointments with Forensic CCTV Viewing facilities Birmingham East LPU report a 30% reduction in routine calls for service directly attributed to FW.

This project is supported in principle for up to 3 years of Business Crime CSP funding to fully embed the systems within all eligible businesses, BIDs and Business Crime Reduction Partnership

Benefits of FaceWatch

Early successes include a FW report to arrest within 5 hours (Selfridges prolific shop theft offender responsible for 2 thefts totalling £210), Identification and arrest of suspects leading to the clearance of £12,000 worth of national shop theft and the arrest of a prolific shop lifter responsible for over £2,000 theft from a BS LPU supermarket. FW CCTV footage was key to identifying the suspect and securing admissions leading to an expedited court appearance.

There are now approximately 400 retailers and partners registered on the Birmingham FW user groups. WMP research suggests crime reports made via FW system saves 240 minutes of officer time (based on 1 officer dealing) which equates to a value of £150 per initial report.

- **Business Crime Survey 2016**– Due to be launched online 18th January 2016. The purpose is to repeat the 2015 business crime survey for comparison of results and benchmarking.

Strand 2 Day Time Economy – Outcome Improved activity to provide interventions that impact on threats to DTE businesses & customers

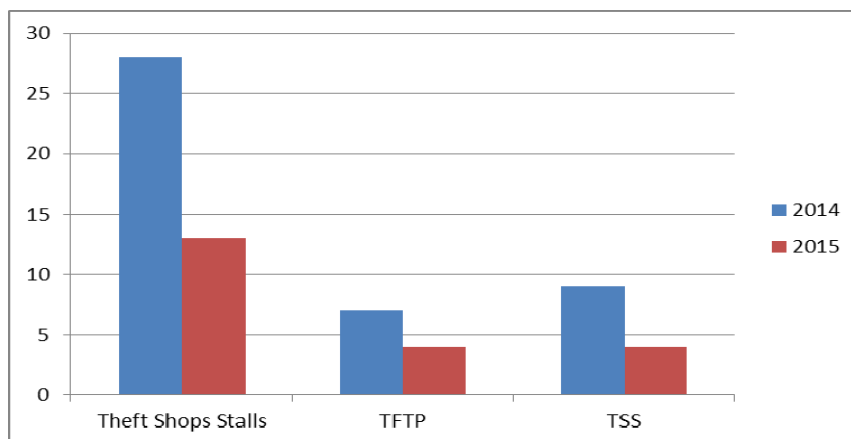
City Centre Operation– targeted overt and plain clothes patrols on 28th/29th November (Black Friday weekend) & 18th – 20th December 2015 (seasonal peak weekend). As a result there were no serious disorders and several proactive arrests of key offenders including: -

- Male arrested for multi shop lifting offences from Grand Central – fragrances stolen over several days, worth several thousand pounds
- Prolific travelling offender who entered John Lewis and concealed numerous items under his coat

Furthermore several known local offenders and suspected Eastern European beggars/pick pockets were engaged and deterred. Officers reported reduced footfall which is believed to be due to the Paris attacks. Overall, year to date comparisons of the targeted dates show a reduction in reported theft offences particularly theft from the person & other opportunist thefts.

City Centre Crime Comparison 2014 – 2015

	2014	2015
Theft Shops Stalls	28	13
TFTP	7	4
Theft Other	9	4



Strand 3 Night Time Economy – Outcome Improved activity to provide interventions that impact on threats to NTE businesses & customers

Interventions

- **Seasonal Resilience (Freshers/Christmas)**

West & Central – additional patrols provided 9 extra officers on targeted dates during December 2015, reductions were recorded during these dates for Public Place Violence; a 45% reduction (6 offences) on 27/12/15. The targeted patrols led to only 4 arrests for disorderly behaviour.

North – additional patrols of extra police officers and CCTV operator took place over 9 targeted dates during December 2015). Officers were deployed to hotspot areas and potential disorder locations as identified by the CCTV operator. This pre-emptive tactic is believed to be a key factor in the LPU reducing reported Public Place Violence (woundings) by 43% (6 offences) on the targeted dates.

South – This project started Freshers week (September) through to 31st December 2015 on selected dates for additional targeted patrols across Selly Oak Ward. The project had 2 specific strands (1) student engagement regarding safer drinking/drug use (2) reducing the LPU vulnerability of BDH due to a high number of unoccupied student accommodation. The LPU has recorded a 21% reduction in BDH offences across Sell Oak Ward. Significant arrests were recorded for offences of BDH, Going Equipped to Steal, Vehicle Interference, Theft of Pedal Cycle (x6) together with large numbers stop/search & IMS submissions of known active criminals connected with BDH, drugs, and cycle thefts

- **Ladywell Walk Closure Proposal** – The closure was put in place with diversions via A38. The funding has provided 2 additional taxi marshals, increasing Southside taxi marshal coverage by 50% to staff 2 separate taxi ranks to safely convey NTE customers out of the city safely. Funding has also provided additional public information signage and a perception of safety survey that showed increase of 12.1% compared to 2012 data (based on survey of 100 people). The project team will be surveying relevant NTE licenced premises and taxi drivers during February 2016 - the results will be known ahead of the Quarter 4 end of project report.
- **Taxi Marshall Scheme** – This funding helps support a longstanding commitment by BCC Regulatory Services Dept. to provide taxi marshals within the Westside & Southside BID areas. Taxi marshals provide assistance, information and reassurance to the public using designated taxi ranks within both BID areas; prioritising early help to vulnerable people and diffusing potentially disorderly situations and signposting people to authorised & licenced taxis and private hire vehicles. The project has reduced the risks of sexual abuse, sexual exploitation, opportunist thefts and violence/disorder. Statistical data for the numbers of taxis and customers using the marshalled taxi ranks shows Southside 64,756 taxis and 102,497 customers, whilst Westside shows significantly less taxis but higher customer footfall (52,867 taxis and 136,654 customers).

- **UCB Safer Students Project** – University College Birmingham safer student walking route from Broad St Project aims to reduce vulnerability & violence & promote more responsible behaviour among students. Funding safeguards provision of radio link with NTE venues for next 3 years . Four student wardens work predominantly Wednesday evenings (peak night for students) to deter vehicles who ordinarily pull up and pester/intimidate students, particularly lone females. The wardens note the VRM of offending vehicles and communicate the details via retail radio to University security officers and WMP. On average 40 – 50 vehicles are reported in a calendar month.
- **NTE “Sharing Best Practice” Engagement Event** - Event scheduled for 25th February 2016 and will focus on the impact of alcohol and NPS within the NTE. The purpose of the event is to example the impact and current partner service provision, to identify gaps and propose partnership solutions. The event will seek to create and agree a corporate action plan that will shape NTE delivery plans into 2016/17
- **CRI/Reach Out Recovery UP-ROR project** - The purpose of the project is the promotion of health protection advice to the various student communities across the city. Events and initiatives include social media campaigns, hand outs and literature, attendance and engagement at typical student events in colleges and Universities. Students from BMET college have started to design a range of drug and alcohol harm reduction leaflets as part of their course work. The project aims to engage up to 1000 students by the end of February 2016. To date 351 young people have received bespoke personal health protection advice, and more general information including hand outs have been distributed at 8 NTE events within various venues attended by 9,500 young people. CRI are also conducting an alcohol/drugs user survey to assist partners in better understanding the issues, risks and interventions required to maximise early intervention harm reduction opportunities. A full project report will be produced at the end of February 2016.

Successes

Substantial support was provided to the creation, launch and subsequent publicity of the West Midlands PCC Birmingham pilot “Support to Victims of Business Crime” project. This project went live November 2015. It is a £60,000 pilot project is under consideration for being widened into a force wide 12 month programme. The work stream’s assistance to market and refer suitable businesses will continue throughout the duration of the 6 month pilot project.

Community Engagement

Considerable efforts have been made to engage and form sustainable partnerships with the Greater Birmingham Chamber of Commerce, which resulted in attendance at a recent Greater Birmingham Chamber “Council” meeting. The Chamber proved extremely receptive to joint working, which we will seek to further develop into Quarter 4. During January 2016 WMP supported a Birmingham Chamber of Commerce event at Waverley School –to engage young people regarding skills, employment and careers – supporting the PCC objectives of supporting economic prosperity.

Branding and Publicity

- 26/11/15 – Publicity across all 11 Business Improvement Districts for a FaceWatch open training event at Tally Ho Conference Centre.
- 07/01/16 - Publicity will commence regarding the forthcoming NTE Alcohol & Novel Psychoactive Substances (formerly Legal High's) Conference arranged for 25/02/16.
- 18/01/16 – Support to the PCC Business Summit (Cyber Crime) within the networks and wider BID stakeholders.
- 18/01/16 – Publicity regarding the launch of the Birmingham Business Crime Survey 2016
- 19/01/16 – Work stream has helped to market the Southside BID Cyber Event, funded via DTE funding (retail crime project).

CROSS-CUTTING

The BCSP Cross-Cutting Theme oversees three major programmes, each with discrete interventions:

- Offender Management
- Safer Travel.
- Youth Offending Service

Offender Management

Integrated Offender Management Co-ordinator. Outcome - Reduced crime levels through effective management of the most challenging offenders

Intensive and sophisticated programme of work to

- develop and improve multi-agency processes,
- engage third sector providers,
- develop performance data and partnership systems, plus
- options to deliver Restorative Justice.

Programme is on course.

Pilot with GPS tags on Prolific and Priority Offenders. Outcome - Reduce offending and re-offending. Reduction in demand for Police and Probation services. Assist investigations into offences and curfew breaches.

Initial findings *to be confirmed*

- A basic comparison with Sandwell suggested the GPS tags might prevent more re-offending than with offenders who are not tagged.
- Curfew breaches are detected
- The tags **may** be reducing offending by around a quarter

Safer Travel

Project Empower. Outcome Increased awareness among young people (ladies) of how to respond if approached for sexual / grooming purposes

Programme of rolling out interactive theatre performance in 12 key schools across the city.

Intelligence-led policing responding to emerging crime trends on the public transport network. Outcome Greater uptake on the public transport system through reduce crime / ASB

Measure	YTD 14/15	YTD 15/16	Percentage Inc/Dec	Trend	Prev. % Change (Apr - Nov)
Total Public Transport	4665	4470	-4%	Reducing	-4%
Total Bus Crime	2142	2076	-3%	Reducing	-3%
Total Rail Crime	2523	2394	-5%	Reducing	-5%

Rail	LSTF - 14/15 to 15/16				Previous % Change (Apr-Nov)
Route/Concern	Baseline YTD 14/15	YTD 15/16	% Change (Apr - Dec)	Status	
Total Recorded Crime (on LSTF Routes as below)	1421	1342	-5.6%	Reducing	-4.2%
Black Country	562	524	-6.8%	Reducing	-4.2%
Central Birmingham	859	818	-4.8%	Reducing	-4.2%

Youth Offending Service

Sophisticated programme of interventions to interact positively with young people in the Criminal Justice System.

The programme directly addresses: -

- Improve public perceptions of safety
- Manage Young Offenders
- Reduce gang & youth violence
- Knife crime
- Sexually harmful behaviour
- Offending by young females
- Maximise the use of Restorative Justice with young people

Birmingham YOS Report

- 1. Rate of First Time Entrants per 100,000 per 10-17 year olds in the population;** Birmingham's rate per 100,000 10-17 year population fell from 512 to 492 between April – September 2015. Birmingham performs in the top quartile when compared with other core cities, however is above the national average (388) and the West Midlands region (461).
- 2. Use of custody rate per 1,000 of 10-17 population;** Birmingham's custodial sentences were as high as 206 in 2011/12 falling to 103 (0.88 per 1000 of the 10-17 population) in 2014/15. In 2015/16 there has been a rise in custodial sentencing in the first two quarters to 64. The custody rate per 1,000 of the 10-17 population is currently 0.92. This is average for the core cities however it is above the national and west midlands average. The three main offences that resulted in a custodial sentence in Birmingham over the period were Robbery; Violence against the Person and Breach of Statutory Order. Black or dual heritage young people remain over-represented in the custodial population in relation to the number of black young people aged 10-17 in the general population.
- 3. Reoffending rates after 12 months Nationally** there has been a rise in the frequency rate for re-offending. However, Birmingham currently has the lowest re-offending rate (0.93) of all core cities for the 12 month cohort and is below the national average (1.18) and the West Midlands average (0.96). Within this cohort were 1049 young offenders, the largest across the core cities, with 33.7% re-offending, which is the lowest percentage of re-offenders of all core cities and compared favourably with 32.4% (West Midlands) and 37.9% nationally. There are cohorts that are vulnerable to poorer outcomes and these are outlined in the latest Youth Justice Strategic Plan

Young People feedback 01/04/15 -31/12/15

Young people leaving the service are asked to complete an online interactive Service Quality questionnaire (Viewpoint). The three areas in which the highest proportion of young people felt that their time at the YOS had helped them were:

- Understanding their offending (65.71%)
- Making better decisions (57.14%)
- School / training / getting a job (45.71%)
- 93.94% of young people felt that they had learnt from the work they did with the YOS.
- 93.75% claimed not to have reoffended since the start of their time with the YOS.

Public Perceptions of Safety Intervention / Activity	Target	Achieved
High visibility Community Payback: Reparation. Graffiti Removal, Ring and Ride Project, Charitable fundraising.	85 per year young people completing Ring and Ride and Graffiti Removal	Yes
	90% of court orders completed to include element of community reparation	On track
Referral Panels are chaired by trained members of the Community to determine content of Referral Order for First Time young offenders in the court system	90% of Referral Orders where NS timescales have expired to include input from Community Panels.	On track

Offender Management Intervention / Activity	Target	Achieved
Risk assessments and Risk management plans related to risk to others	80% of cases assessed in the period with an identified risk to others have a risk management plan within timescales	On track
Safeguarding assessments and management plans related to risk to self	80% of cases assessed in the period with an identified risk to self to have a vulnerability management plan within YJB timescales	Ahead
Compliance with programmes within the community	80% of missed appointments followed up within 1 working day.	On track
Work in partnership with Secure Estate to strengthen programmes in the Estate and congruence with resettlement plan	90% of DTO initial planning meetings held in compliance with National Standards	On track
Re-settle young people exiting custody to ensure wrap around support and surveillance	90% of young people leaving custody have suitable accommodation to go to.	Ahead

Additional tracking young people to ensure compliance	90% of young people starting ISS programme to include electronic tagging	Ahead
Support young people to achieve with assessments and interventions that reduce re-offending and harm	75% in full-time education, training and employment	On track
	20% of young people to have improved ETE at end of order	Ahead
Integrated Offender management. Risk assessments and intervention plans related to risk and welfare	Latest Binary Re-offending rate cohort tracked 12 months to be lower than national average (National average 36.6 / July 2012- June 2013 cohort)	Ahead
	Reduced use of custody for 10-17 year population. Less than 1.57	Off track
Deliver effective services for victims	90% of identified personal victims offered support	Ahead
	Victim satisfaction rates above 90%	Ahead
Restorative Justice and Direct and Indirect mediation.	10% of participating victims engaged in direct and indirect restorative process.	On track
Assessments of all yp referred through Safer Estates for reducing ASB. Includes civil pre-court (acceptable behaviour contracts) and court reports and actions	60 young people per annum	Achieved
Reduction in First Time entrants	Reduction in FTEs to lower than 684 per 100,000 population.	Ahead
Raising awareness of Knife offences	90% of all YOS cases ending in the period receiving Knife Crime Awareness programme	Ahead
Tackling knife enabled offending	90% of yp ending programme in period for a knife enabled offence prevention	On track

All Young People in the Youth Justice System: 'Risk to Others' Assessments

Qtr 2015	'Risk to Others' Assessments Completed	New	Improved or Maintained	Deteriorated	Improved or Maintained (%)	Deteriorated (%)
Q1	649	121	494	34	93.6%	6.4%
Q2	634	133	463	38	92.4%	7.6%
Q3 (provisional)	558	117	413	28	93.7%	6.3%

All Young People in the Youth Justice System: 'Risk to Self'/Vulnerability Assessments

Qtr 2015	'Risk to Self' Assessments Completed	New	Improved or Maintained	Deteriorated	Improved or Maintained (%)	Deteriorated (%)
Q1	661	131	484	46	91.3%	8.7%
Q2	624	133	457	34	93.1%	6.9%
Q3 (provisional)	553	108	414	31	93.0%	7.0%

Domestic Violence

Protect victims and children from harm. Ensure safety in times of crisis, plus ability to identify and intervene earlier to reduce harm

Interventions

Since April 2015, the **Domestic Violence Helpline** has responded to 1360 victims, 126 family and friends and 538 calls from professionals seeking support for domestic violence, homelessness and safety planning. Issues of housing, finance, immigration and child safeguarding featuring highly in responses to professionals.

Women's Safety Unit provision of advocacy and support to high risk domestic violence cases has supported 1479 victims with 1112 children so far this year. There has been a surge in referrals from MARAC³ with more double the number of cases being dealt with this quarter compared to previous. Beyond criminal justice, homelessness has been prevented in 422 cases; 583 victims have been supported with mental health or substance misuse issues and 451 families with safeguarding concerns.

Independent Sexual Violence Advisor (ISVA) service continues to exceed targets for delivery. Whilst referrals have maintained, the length of support needed for court proceedings and wider issues, is increasing.

LGBT IDVA⁴ Self referrals have maintained to this new service which is demonstrating a significant number (40%) of high risk victims and majority of victims seeking support for mental health or substance misuse issues. Although self-referral is anticipated as the main route through to this service, no referrals have yet been made from the Police or City Council services.

Domestic Violence Group Work Programme delivering a structured community based model in all areas except Birmingham South, together with evaluation of best practice in group work. The programme has received 185 referrals, mainly from social care, and supported 162 women of whom 93 are mothers. Participants have a broad range of ethnicities and have language support provided by trained volunteers where needed.

The groups run alongside Women's Aid drop-in services in the community as many victims have ongoing safety and practical concerns which need to be addressed alongside their participation in group.

Developing safe methods of delivering groups is a vital feature of this programme and learning is already available around running open or closed groups; the mechanisms of language support; running groups in partnership with probation, mental health and children's centre services; the impact of compulsion (child protection) on participation and engagement.

³ MARAC – Multi agency risk assessment conference.

⁴ Independent Domestic Violence Adviser.

Increase public awareness / young people. Promoting awareness of unacceptability of DV, particularly among young people

Intervention

Women's Aid **Positive Relationship Programme** for schools has been delivered to over 1200 students across primary, secondary, pupil referral units and youth groups. 130 briefings for teachers and 15 sessions for parents. Unlike the first year of the programme, the majority of schools are now engaging with the full 6 week preventative programme for year groups rather than individual sessions.

To increase the awareness of FGM⁵ and its consequences with

- **practicing communities to enable the practice to end**
- **professionals and schools to enable better identification, and improved safeguarding practice**

Interventions

To increase the capacity of the FGM Project to enable development of Community Champions and undertake work on FGM –

FGM Community Engagement Project The project has supported 106 women affected by FGM from 13 countries of origin; provided 22 drop in sessions at maternity services; supported 17 community champions; provided 20 community awareness raising events; trained teachers and teaching assistants in 7 schools and provided awareness raising for 234 professionals including children's centres to pregnancy outreach workers.

The project supported a woman to gain the first FGM Protection Order in the region and worked with the Police and Family Court to set up a free court drop-in and to make changes to the wording of Protection Orders to better safeguard the mother and child.

Six community champions are now confident to co-deliver community awareness raising sessions, regular weekly sessions have commenced with the Somali Women and Youth Service and new peer researchers are being trained from the existing community champions.

Develop evidence-based multi-agency services. Pursuit of excellence in mitigating the damage to lives caused by DV

Interventions

Domestic Violence Standards: Birmingham first developed standards for domestic violence in 2004 and has trained against them for over ten years. Drawing on this experience, we contributed to the re-drafting of new standards, adopted regionally and being promoted locally during this 3rd quarter.

⁵ FGM Female Genital Mutilation.

Blue Light Project: Birmingham is participating in a national project with Alcohol Concern and AVA to develop responses to domestic violence and problematic substance misuse using evidence from domestic homicide reviews. The programme is drawing up guidelines following facilitated strategic workshops on Domestic Violence And Change Resistant Drinkers which were held in Birmingham through September.

Domestic Homicide Reviews: An on-going programme of multi-agency training is being delivered to disseminate key findings of homicide reviews with a significant focus on coercive control. Frameworks for quality assurance and learning and development have been developed to strengthen organisation's ability to respond effectively to the findings from the reviews..

Risk

It is recommended that a capacity of 16.5 IDVAs are required to meet the demand of Birmingham's MARACs. Presently there are 8, funded through a range of sources and all are at capacity. A cut in BCC funding will further reduce these numbers by 2 FTE. This would seriously undermine the MARAC process.

Local Delivery

The city has four local domestic violence forums which engage at a local level, alongside the schools programmes and FGM project which focus on engagement across all communities.

Summary

The range of services provided through this funding has shown to be critical in addressing the safety and support needs of high risk victims of domestic violence as well as reaching victims earlier to prevent harm escalating and serving primary and secondary prevention. The services are subject to rigorous monitoring on outputs and outcomes and can well evidence how victims and their children are safer and how through the extended range of services, they, and the professionals that support them, are guided through to the most suitable services to meet their needs in a highly complex environment.

MOBILISING COMMUNITIES

Aim: To increase community engagement in Community Safety and respond to local concerns.

Interventions

These are: Road Safety, Small Grants and Community Grants Programmes

Road Safety. Outcomes Reduced speeding in residential areas; tackling inconsiderate / dangerous parking and street racing.

Working together with West Midland Fire Service there are three projects

- The Honest Truth- focuses on reducing the number of young drivers and their passengers involved in road traffic collisions.
- The Community Speed Watch Programme focuses on monitoring speed at targeted and safe locations, addressing the concerns of local residents whilst raising awareness and providing re-education to road users in that area.
- The introduction of 'Road Safety Parking Boxes', a toolkit for members of the school and wider community to begin to address the issue of inappropriate parking by becoming actively involved in road safety.

Mediation

Outcome: The resolution of low level neighbourhood ASB through mediation

The project has received 26 referrals between October – December 2015. 13 cases were closed with successful outcome. Referrals were made by Birmingham City Council (23) and Social Landlords (3). Year to date the service has received 88 cases and 84 have closed with 45 cases having a successful outcome. An independent evaluation has been undertaken of the project from the contract start date July 2013 to October 2015 assessing the work and impact.

VULNERABLE PEOPLE

Aim: To bring 'additionality' to mainstream services with the aim of reducing demand. Identified areas are: supporting at-risk' young people, Mental Health, repeat and vulnerable victims of ASB, Hate Crime, Child Sexual Exploitation and Female Genital Mutilation (FGM).

Aurora – Intensive structured support for 'at risk' young people (12-17) WM Fire Service. Outcomes Young People to cease offending & Young people to re-enter education

- One Phase two course has now been completed where 7 of the 9 young people completed. (A further course dues to start in January). This phase has included inputs around knife crime and gang affiliation, life aspirations / goal setting, together with consequence- based practical inputs around vehicle crime and arson. There was also an outdoor education session which took place at Malvern. Instructors are following up by providing the young people with ongoing (post course) support and via telephone and home visits on a fortnightly basis. This includes regularly contacting parents / carers and referral officers for updates on behaviour and attitude.
- Another 4-day residential outdoor education course is scheduled for March 2016. The course is only offered to those young people who have shown a marked improvement in behaviour, attitude and school attendance. This is the 'incentivisation' element of Aurora.

Barnardos Space

Providing shelter and bespoke to young people who have been victims of, or are deemed at risk of, Child Sexual Exploitation.

Birmingham Community Safety Partnership (CSP) funding will assist meeting the following targets.	Q1,2,3 CSP funding highlighted in pink on Monitoring Tool	Q1,2,3 Safeguarding Funding highlighted in blue on Monitoring Tool	Q1,2,3 Other funding	Total
Direct work with 50 young people who are vulnerable/sexually exploited	40	32	61	133
Deliver 12 events to 300 professionals to raise awareness of Child Sexual Exploitation (CSE)	11 events to 240	9 events to 246		20 to 486
Deliver 10 events to 200 children and young people to raise awareness of CSE	Q2&3: 15 events to 301 yp	Q1&3: 60 sessions to 480 young people		75 sessions to 781 young people

Training and Presentations to Adults Working with Children and Young People

12 November 2015 Family Nurse Partnership Board – South – Barnardos models of work – 1 hour – 11 participants

Safeguarding Department/ BSCB/other funded:

BSCB Multi Agency CSE: Raising Awareness Full Day Programme:

- 21 October 2015 – 24 participants
- 17 November 2015 – 29 participants
- 15 December 2015 – 22 participants

Group work/events with young people in Q3:

- Nov-Dec 2015 Aston Manor Academy Y9 4 classes (total 160 pupils) 3 sessions per class Total 12 sessions Session 1: Healthy relationships Session 2: Grooming and Session 3: Sexual Health
- 16-20 Nov 2015 South & City College Birmingham. 8 workshops (total 127 pupils)

Barnardos Case Study 'Anonymised' Study

The service user 'M', aged 16, was referred to Barnardos Space in December 2014, due to concerns that she was regularly missing from home, staying overnight with men she had met on the street, and had recently met up with an older 'boyfriend' who she had met over the internet. The Barnardos worker met with 'M' and her family, and the FCASE model work plan was agreed.

The issues identified included:

- Conflict exists within the family which often results in M being subjected to derogatory name calling. Dynamics are poor within the family – a push factor in that M seeks attention from outside the family
- M has been a victim of grooming for sexual exploitation.
- The perpetrators live in the area, are terrorizing the family and may still have a strong influence over M. The family wish to move to another property due to the risk the area poses to M and her family
- M does not recognise the exploitative and abusive relationships she is experiencing which continues to place her at immediate risk of CSE
- The parents struggle to recognise the grooming process and that M is a victim of this. They blame her for the violence that she has experienced.

Over the 9 months of the work plan, there were 23 sessions with M and 6 with the parents. Work was also undertaken to report through formal multi-agency procedures.

Positive outcomes achieved:

- M recognises how she has been groomed and exploited and she is now recovering from the abuse experienced

- M no longer associates with people who are risky and likely to exploit her, and no longer goes missing
- Relationships within the family have improved
- M and the family are now linked with agencies who can continue to provide support as needed
- The family have been rehoused and are no longer the target of abuse from perpetrators.
- The perpetrators were identified and police involvement is continuing

Work was completed and the case closed in November 2015.

The BRAVE Project

Victim Support - Supporting victims of repeat ASB

Category	October	November	December	Total
Number of new referrals into BRAVE	24	28	26	78
Reactivated cases (inc. in above)	3	2	1	6

Geography of New Referrals

Area	October	November	December	Total
North	4	11	5	20
South	8	13	12	33
Central & West	7	2	6	15
East	5	2	3	10
Total	24	28	26	78

Service Delivery

	Qtr 3
Referrals / Conversion to cases	78 ⁶
Initial Needs assessed	54
No needs identified (client did not take up the service)	1
Action plan for service users	53
Current open caseload for nine month intake	109
Cases still live referred before April 2015	6
Total open cases as of 31 December 2015	115
Cases closed	19
Total cases cleared (including abandoned, rejected and service declined.	57

Based against the total intake of 78 referrals, this gives a successful conversion rate of 78% (against a target of 80%). This led to completed needs assessments for 53 clients. The 78 referrals affected a total of 143 victims, (average of 1.83 victims per referral). Referrals are now ahead of the annual target.

⁶ 17 cases fell outside of the project remit. In 7 cases no consent was received.

Client Satisfaction

Of 38 clients who have completed the wellbeing questionnaire (to date) on closure of their case, the following results were given.

Improved emotional wellbeing	84%
Improved confidence in dealing with ASB	84%
Improved knowledge on how to deal with ASB	81%
Improved motivation in dealing with ASB	68%

BRAVE Case Study

A resident of Kings Norton was referred to BRAVE in July 2014. The neighbour in the flat above were conducting a campaign of intimidation by posting notes through the letterbox, shouting abuse in the street and spreading malicious rumours. This had started in 2013 and by July 2014 the client was severely depressed and demoralised, feeling very close to the point of mental and nervous breakdown. At first BRAVE support comprised a series of calls to explain the service, protocols and ethos around confidentiality.

The next series of calls provided support which served to relieve anxieties and the frustrations. As the abuse continued the client had now become a prisoner in their own home. With BRAVE supporting client, the Housing ASB team investigated, including installing noise monitoring equipment. BRAVE emphasised the importance of gathering information and evidence by keeping a diary of all incidents, so that the investigators became aware of the alleged perpetrators activities. The case reached court on numerous occasions where, due to the severity of the ASB, the perpetrator was imprisoned - but only for short periods. On release the campaign would resume. BRAVE played a key role in providing a constant source of support for the victim.

This case concluded successfully when the perpetrator was evicted.

KIKIT Outcomes

KIKIT provided mentoring support for an additional 29 young people identified as vulnerable to gang involvement or at risk of offending. The project also provided employment, education and additional workshops for mentees. These include:

- 3 referrals into the Princes Trust (12 week programme)
- 2 young people supported into full-time employment
- 12 awareness workshops on: Antisocial Behaviour; Child Sexual Exploitation / Grooming; Domestic violence; Extremism; Gang Involvement; Gun crime; Knife Crime / Law and Substance misuse and the Law

5 new mentees were referred to KIKIT through family referrals and West Midlands Police. West Midlands Police have written to BCC requesting for this grant program to continue in 2016 as the feedback from families have also been positive.

Outputs	Total qtr 3	Year to date
Engage 100 vulnerable young (14 - 32 year)	29	75 ytd
Complete 15 hours of intensive mentoring support with individual mentees.	20	39
Complete 1547.5 hours of intensive mentoring support.	1123	2206.5
Target minimum of 25 young people no longer using drugs through Intensive mentoring	15	22 ytd
Target minimum of 28 young people no longer offending from postcodes: B11, B12, B13.	16	32 ytd
Complete 25 support group sessions with minimum 14 of mentees.	21	30 completed
Arrange 4 Khat awareness workshops (1 per quarter) with up to 200 attendees.	2	4 ytd
Target minimum of 45 people supported using Khat through awareness workshops.	25	90

SIFA Fireside

Using woodwork to upskill vulnerable people & create working culture / Psychological Wellbeing worker. **Outcomes** To reduce homelessness through Individual and group sessions to improve confidence & resilience; reduce anxiety & depression

Set up a social enterprise as a trading arm of Sifa Fireside

'Out of the Woodwork' (OOW) is now an established social enterprise which provides work placement opportunities to the long term unemployed. Quarter 3 update: -

- 6 items sold (annual target 10).
- Furniture renovation undertaken for a customer.

Developments

i-SE and the Women's Enterprise Network in Birmingham have agreed to showcase OOW products at their business premises. Also a large retailer has agreed (provisionally) to advertise OOW furniture on their community boards in store.

18 clients Trained In Upcycling Furniture

To date 11 clients have joined the programme. Of these:

- 4 now employed.
- 6 currently in training (3 due to complete during January).

Other clients

- 1 dropped out shortly after starting but did gain qualifications in Health & Safety and COSHH.
- A further 8 received the Health & Safety training but did not go on to take a training placement

- 1 person was unable to join the programme due to failing a Risk Assessment.

Clients supported into safe and stable accommodation

- 1 rough sleeper supported into secure privately rented accommodation.
- Others retained accommodation due to regular OOW activity and access to support for other needs e.g. welfare and benefits, debt advice etc. that needed dealing with prior to joining the programme. .

6 volunteers advertised and recruited through BVSC to support the furniture project.

Achieved. In the new year efforts will be made to secure further volunteers.

- 2 successfully completed their time.
- 2 currently working and
- 2 dropped out due to their personal circumstances.

Mental Health First Aid Training

- 7 x Mental Health First Aid (MHFA Standard), 2 day training courses.
- 5 x Mental Health First Aid Lite (MHFA Lite), ½ day training courses.

MHFA Standard 2 day course: (16 places per course):

Date	Numbers attending/or places booked.
Wednesday 4th & Thursday 5th November 2015	10
Thursday 3rd & Friday 4th December 2015	14
Tuesday 5th & Wednesday 6th January 2016	12
Monday 18th & Tuesday 19th January 2016	All 16 places booked.
Tuesday 9th & Wednesday 10th February 2016	All 16 places booked.
Monday 7th & Tuesday 8th March 2016	All 16 places booked.
Thursday 17th & Friday 18th March 2016	All 16 places booked.

MHFA Lite ½ day course: (25 places per course): Planned dates: Tuesday 2nd February, Friday 26th February, Thursday 31st March, Thursday 14th April and Thursday 28th April

STOP HATE UK - Intervention

Provision of a 24/7 telephone hotline to report Hate Crime for victims and witness with concerns about contacting the police.

In the first 3 quarters there were 66 contacts to the Stop Hate Line service. Service users either reported incidents, sought updates on cases or professional advice about general Hate Crime matters. 37 calls were to report specific incidents, and where practical, consent was gained from the service user to make referrals for onward investigation and support to the Police, Victim Support and other agencies.

Community Engagement

BRAVE A presentation was given to New Entrant police officers as part of their training at Tally Ho. BRAVE attended The Birmingham University Guild of Students recruitment fair in October and a similar event at Aston University. A Fire Service Open day in October. Inputs on three occasions to WMP Neighbourhood teams training in B'ham South LPU.

Stop Hate UK engaged with the West Midlands PCC Victims Commission and attended the Birmingham Hate Crime Reduction Partnership meetings (in January we will be giving a presentation about our work and activity within Birmingham). Stop Hate supported the event in November 2015 organised by the Victims Champion and made a number of local contacts, including Victim Support, and representatives of the Somaliland community in Birmingham. Use has been made of Social Media to run a number of paid for Facebook adverts. These reached approx. 6,000 people in the city and generated significant interaction with people unaware of the service. Stop Hate will also be attending a community event organised by Ann Frank Trust in February 2016 and is continuing to develop links with Victim Support.

YOUTH VIOLENCE

This work embraces young people from 10 to 29 years old, with the emphasis on Prevention, Intervention (inc. Offender Management and Diversions) and Engagement. This strand comprises a series of collective interventions which impact in these ways either in part or whole with young people.

Miss Dorothy Prevention Programmes

Exclusion data is utilised to target schools for awareness raising around Miss Dorothy early prevention programme, its benefits and are provided with information and opportunities to access training/support. Schools and agency partners are engaged and trained to deliver Miss Dorothy programme. Referrals for external agency support generated from running Miss Dorothy sessions (Think Family, FCAF, MASH)

Positive feedback on the programme continues to be received from teachers, pupils and parents. Examples include:-

- *Children feel they are able to speak out if they believe they or a friend are at risk of becoming a victim of gang violence or child abuse.*
 - *“From doing the programme I have learnt that what I do has a consequence which can be good or bad “ yr. 6 pupil.*
- *The programme teaches children the skills to prevent them becoming victims of gang and violent crime.*
 - *“The Dot values program helped us understand the problems and difficulties of growing up in life.” Pupil in Yr5*
- *Children feel they have a chance to talk and think about who they trust, what they value, the differences between right and wrong, and making the right choices.*
 - *“If we are in danger we all know what to do e.g. call the police, ask an adult for help and we can run away. The Dot programme helped us understand the problems and difficulties of growing up in life”Y6 pupil*

Police & Schools Panel For Alternative Providers

Ofsted-inspected Alternative Education Providers (AEPs) fully engaged with the AEP Panel from October 2015. The meetings address, information sharing and action planning resources to prevent and intervene where young people are vulnerable to involvement in gang activity or serious youth violence.

A framework for sustainable engagement between AEPs with Police and other partners is developed and implemented for the benefit of young people not attending mainstream school thereby improving outcomes for young people.

Intensive Support & Mentoring Programmes

Young people are engaged in regular support that increases their resilience to further involvement in gang and serious youth violence, leading to education, employment/training (ETE) which will further increase their resilience to subsequent offending

Multi Agency Gangs Unit (MAGU) Barriers Fund

Young people believed to be involved in gang activity are engaged in regular support that increases their resilience to further involvement in gang and serious youth violence. As a result of support and mentoring they gain access to education, employment/training (ETE) and suitable accommodation which will further increase their resilience to subsequent offending

Youth Service ‘Adrenaline Rush’

Young people are identified for engagement in programmes commissioned under the Youth Violence Delivery Plan. A targeted cohort of young people access and consistently engage with the programme to increase their resilience and disengage from further involvement in violence and / or gang-related crime. The Youth Service is fully engaged with all partners, with a focus on developing relationships and direct engagement with schools, for the purpose of information sharing and monitoring the impact of the programme on young people. Young people at risk of involvement in gang or serious youth violence are referred for appropriate intervention, i.e. CAF, Think Family, MASH, Mental Health etc.

Case Study

C has begun to show significant improvement with his use of language and behaviour and more importantly controlling his anger and his attitude toward carrying a weapon. His behaviour at the start of the programme was very quiet and introverted and he struggled to deal appropriately with conflict as he would get angry very easily and lash out. There were a number of occasions where he harmed others. He would quite openly talk about knives and the need to carry a shank with him on occasions whenever he was “*in beef*” with other young people. However during our one to one discussions it has become evident that C no longer carries a knife with him when he feels threatened or “*in beef*”. He attributes this change in attitude due to the impact of the first few knife crime workshops and the testimony of a mother who has lost her son to knife crime. C now understands the impact and potential risks / possible consequences. The structure of the programme has allowed C to be among other young people his own age and to positively engage in activities that are challenging, fun as well as allowing him to release some of the frustrations. The group discussions and one to one discussions have allowed the youth workers to challenge his myopic views and prejudices. He struggled at first to but now he is more outspoken and ready to engage. Expressing an interest in volunteering at the youth centre as a young leader after the programme has resulted in him using his influence to help guide the younger attendees. There has been a clear change in behaviour from a young person with low aspirations and self-esteem to a young man working hard to stay out of trouble, actively participate in positive activities and seeking an alternative life path. There has been no self-reporting of violence/ conflict in the area that C has been involved in.

LOCAL CSP ACTIVITY OVERVIEW 1 April – 31 December 2015

EAST QUADRANT

<i>Priorities / Intervention/s & Status</i>	<i>Update</i>
Domestic Violence	
DV Forum / Ongoing	Work continues to progress through the forum around welfare reform and developing a local awareness campaign. The forum now numbers approximately 80 people and around 30 different organisations are represented from both the statutory and voluntary sectors. A First Night campaign to generate donations for refuges has been organised for December – January, and Civil Orders training will take place in January 2016
DV Training / Ongoing	Training has been scheduled for Q4. This will involve staff from Family Support teams in statutory and voluntary sector.
Youth Violence	
Youth ASB Diversion / Partially completed and ongoing	Evaluation of summer activities for youth related ASB is complete. A further project in two nbhoods is being developed around youth mentoring. The partnership has agreed to focus on two nbhoods in future partnership activity
Youth Forum / Ongoing	A network has been established and an event planned
Mobilising Communities	
General / 14 community projects supported in East Birmingham	There has been significant support in East Birmingham to promote, decide and facilitate the Small grants programme. This has seen a marked increase in the number of small grants bids for this area (nearly £150k was applied for against a pot of £45k). Evaluations to be completed in Q4.
Website / Ceased	This project will not be continuing, and will use existing BCSP website instead
Social Media Training / Ongoing	Commenced – to complete in Q4
Road Safety / Ongoing	Awaiting for delivery of goods
Sparkbrook Environmental / Ongoing	This project will no longer require funding as it is being delivered through alternative funds. Significant progress made in develop multi-agency working to tackle clean and green

Neighbourhood Tasking / Ongoing	This is now linked to the BCC Place Management programme and for each ward there are local priorities identified. These include a number of community safety priorities. The partnership is working hard to ensure these local priorities link in to the broader priorities and can be supported.
Vulnerable People	
ASB Training / Ongoing	A package has been developed. Will be delivered in February and March 2016
FGM Training / Ceased	This project is no longer delivering as the provider has decided to focus on other priorities.
Mental Health Networking / No final outcome yet	First event held in December. Outcomes now being taken forward by a multi-agency working group. Second event involving voluntary sector to be held in Q4. In terms of wider Mental Health work, the partnership has worked alongside Birmingham MIND and Birmingham Social Housing Partnership to prepare a bid for vulnerable victims of ASB from the Victims of Crime fund at the PCC office
Safer Communities Groups/ Ongoing	The groups have now merged across East Birmingham and are forming an ASB network for this part of the city. They are also being better linked to training opportunities and delivering an ASB service as a whole
Business Crime	
Moseley Business Engagement / Ongoing	Project delayed but will complete in February
South Yardley Facewatch / 30 businesses signed up	Project launched in October 2015. Over 30 new businesses now part of the Facewatch family. PCC attended launch

Community Engagement - Moseley Village Business Engagement

Branding and Publicity PCC was invited to launch of South Yardley Facewatch

Other Activity

- Safer Communities Groups to tackle ASB – to be merged into one meeting.
- Op Raindrop – LCSP has supported WMP as part of its latest No Deal drugs operation. This has involved co-ordinating partnership work from pharmacies; CCGs; Mental Health, KIKIT and Think Family workers.
- Public Health & Yardley – The LCSP is working alongside the new Yardley Public Health Group which has priorities around dementia, domestic violence and mental health. Progress to date has been made in terms of relationships with CCGs and linking data into ward plans.
- Small Grants – Following extensive local promotion 38 bids (totalling £147k) were submitted and 12 approved. A range of activities have been supported and successful bids will be allocated a buddy for support.
- Mental Health First Aid – the LCSPs have promoted this opportunity and spaces are being filled.

NORTH QUADRANT

North Local Community Safety Partnership Priorities and Progress

Domestic Violence Priority

- DV Forum Outcome Training delivered to 13 officers DV recovery Tool kit programme in place, second programme planned for March 2016.
- One partnership Referral form for Freedom and DV recovery with a SPOC from Children Services in place.
- Monitor/support groups in place.

Progress Update –

The forum is working well and attendance has increased 85 members in total with an average attendance at meetings being 30/40.

Finance Update, £5000 committed to train 13 officers to be able to deliver the DV recovery tool kit. Training has been completed. One DV recovery tool kit programme being delivered now and another being planned for March 2016.

There is now a North referral form in place for Freedom and DV recovery which is monitored via a SPOC. All trained officers work together and have also introduced coffee morning/support groups with all victims who have attended the freedom/DV recovery. Campaigns continue in the form of raising awareness of DV and links are now in place with all GP surgeries. The group supported the teenage abuse campaign and pens with pull out banners are been provided to all youth groups and secondary schools.

- **Area of concern – lack of counselling services for victims of Domestic Abuse being delivered in North**

Young People Priority

- Youth ASB Diversion
- CSE
- Domestic Abuse
- Healthy lifestyles

£21k of external funding received to delivery projects around raising awareness of CSE to parents and providing support for YP affected. One to one monitoring.

Summer activities completed increased detached work in Sutton park ASB hotspot locations, working with YP effected by bullying, Boot camp activities with YP with learning disabilities and providing 15 YP who were NEET with obtaining their construction cards, some of whom are now working with Wilmot Dixon and the KRT.

Progress Update

Business cases have been developed around CSE, self-Harm, Health and wellbeing, Domestic Abuse and building confidence and esteem. External funding of £21K has been secured. There is another £50k worth of bids pending.

Finance Update

£10,407.00 spent to date. The funding was used to provide summer activities and also to support YP into employment. Summer activities included – increased detached work in Sutton park ASB hotspot locations, working with YP effected by bullying, Boot camp activities with YP with learning disabilities and providing 15 YP who were NEET with obtaining their construction cards, some of whom are now working with Wilmot Dixon and the KRT.

Mobilising Communities Priority

- Neighbourhood Tasking Interventions.
- Place management partnership profiles.
- Road Safety Interventions.
- Quad Bike Interventions.
- Ownership of the small grants fund.
- All 8 tasking groups offered social media training extended to Sutton HLB.
- Keep Safe Project – partnership approach to keep the home safe and engaging residents to take ownership of their street.
- Community survey launched, finding to be used at priority setting event. To be delivered by Police/Fire/BCC street scene/North LCSP/Probation Community Payback.
- Small Grants – no underspent predicted.

Progress Update

Neighbourhood Tasking – external funding was secured to provide all 8 neighbourhood tasking groups with social media training and to set up their own blog and provide them all with a tablet. This was extended to include Sutton HLB. ASB partnership training has been completed.

The Keep Safe project has been reintroduced and 3 projects delivered in Kingstanding, Stockland Green and Falcon Lodge, another is planned for Kingstanding on 25 January. This is a burglary reduction project but also includes clean and green with support from community payback and BCC street scene officers. Fire service officer safe and well checks.

Finance Update

£2,628.55 spent to date. This includes items to deliver Keep Safe.

Small Grants Update

To date £43k have been spent and there a bid of £5k being considered and other bids pending. This fund will be fully spent over 15 different projects/groups.

Vulnerable People Priority

- To form a Vulnerable People partnership. Launch event has taken place with 38 partners.
- Delivery plan now in place.
- Supporting Adults panel have had 4 meetings and 9 referrals.
- Pop Up Café now supported by ACAP and adult social care and carer's team.
- Kinship fully operational 38 referrals.

Progress Update

Group is established membership includes – Adult social care, BSMHFT, ACAP, environmental services, Public Health, BCC landlord services, RP, Children Services, Aquarius, CRI, MIND, Victim Support and Shelter.

Projects being delivered – Supporting Adults Panel is now in place and has had 4 meetings and 9 referrals all of which were accepted and progressed.

The Pop Up Café will be in operation from March 2016 and ACAP and the adult's carer's team will be taking part.

Finance Update

£5,559.25 has been spent to date. This includes the Kinship project which has now received 38 referral in North and set up a number of activities and support groups for vulnerable people who are supporting families affected by substance misuse.

Business related crime and NTE Priority

- Purple Flag
- Op Festive Cheer
- Support to Erdington and Sutton BID's
- Purple flag application being sent in the next round.
- CCTV app about to be delivered in Sutton centre

Progress Update

Partnership work being delivered on Erdington High Street supported by the BID bi monthly includes environmental enforcement. Public Place Protection Order package now received for Erdington High Street – consultation in progress.

Sutton restaurant quarter now in place and purple flag web page set up. 2 x extended partnership meetings with pubs/clubs/restaurant have taken place.

Op Festive Cheer completed review meeting in February.

Violence

- Police have produced a violence profile to identify areas of concern / Profile broken down into themes YP/DV/Public Place. Three priority geographical areas identified – Stockland Green / Kingstanding / Erdington.

Progress

Partnership meetings have taken place with Police / SNPM/ Place Mangers/ Aquarius/CRI/Youth workers. Actions agreed.

Funding

North Local CSP has ring fenced £3k to support activities will be spent in Q4

North Local CSP Annual Priority Setting - 22 January 2016

To identify priorities for 2016/17 produce delivery plan and review all sub groups including terms of reference for sub groups and the North Local CSP.

Aims: -

Production of delivery plan for 2016/17.

Review sub groups.

Review Terms of Reference.

General

North Local Community Safety structures and partnerships. Review completed of partnership for safe guarding children and families. Group working well. Web page to be launched in February

Progress Update

The 3 HIM meetings in North have been reduced to one Hub Integration Partnership. This group sits alongside the North LCSP. Terms of Reference signed off and delivery plan now in place.

SOUTH QUADRANT

Priorities & Intervention/s	Outcome	Update
<p>Domestic Violence</p> <p>1. <i>Maintaining regular Birmingham South Domestic Violence Forum and network of agencies and services, which has a focus on:</i></p>	<p>Established Network of services in relation to DV</p>	<p>One of the four annual forums has now taken place and it continues to be very well supported with an attendance of approximately 50 practitioners and managers, as well as a wider network of 300+ representatives from across health, children's services, community safety, voluntary sector</p> <p>Relevant Information is circulated DV Forum members on a regular basis</p> <p>Next Forum is planned for February 2016.</p>
<p>2. <i>Deliver awareness campaigns for agencies and communities to address seasonal risks and to coincide with wider opportunities and events, which can influence local awareness raising. This includes:</i></p> <ul style="list-style-type: none"> a. <i>First Night Campaign – November-February</i> b. <i>Domestic Abuse No Excuse – May-September</i> 	<p>Awareness/ Campaigns/ Newsletters circulated</p>	<p>"Domestic Abuse No Excuse" items circulated during Q1 via local networks Regular updates made on social media/ websites in relation to local and national campaigns around domestic abuse.</p> <p>First Night Campaign launched 14th December, 6 public collection points across South Birmingham, including 3 fire stations and 1 collection point for Staff only at Royal Orthopaedic Hospital. A further collection point coming online in January at Birmingham Women's Hospital which will also be for Staff Only.</p> <p>WMFS have been proactively promoting this campaign via station and corporate communications twitter accounts, a number of enquiries have been received as to whether this campaign extends beyond Birmingham.</p>
<p>3. <i>Commission training for local practitioners in multi-agency settings to raise awareness of domestic abuse, but also to increase skills and competencies</i></p>	<p>Currently seeking Advice and Guidance on how to progress this</p>	<p>Discussions ongoing with the Safeguarding Children's Board, awaiting update in relation to commissioning training for North and South quadrants – no update has been received from Children's</p>

		Safeguarding, currently seeking advice from Birmingham Community Safety Partnership in relation to alternative providers and the specification.
Young People 4. <i>Using an intelligence led and cross-sector, coordinated approach, commission/fund additional youth provision and opportunities in areas where young people are most at risk of becoming involved in ASB and crime. Particularly during the summer months.</i>	10 Separate Youth Programmes completed through the summer and October half term across South Birmingham 5 additional projects supported from Involving Communities Funding Young People's Question Time	Summer activity funding process delivered to provide £27,000 (match-funding of £12,000 from Housing Liaison Boards) of funding for activities for young people from June to September Activities included sports, music, media and educational days etc., providers included BCC Youth Service, Pertemps Coachright, InUnity and Spearhead Trust. Further projects took place in October half term. In addition the Involving Communities Funding has supported projects in Shenley, Brandwood, Druid's Heath, Quinton and Northfield totally £16k The LCSP supported the Young Peoples Question Time organised by WMP, this covered a wide range of community safety issues including bullying and road safety to name a few.
5. <i>Maintain and further develop "What's On South Brum" as a web and social media platform, including the development of a format just for young people</i>	6118 visits to website since April	Youth Services commissioned to take on the management and development of this website for an interim period whilst voluntary sector options to take on the ownership and development of the "What's On South Brum" brand.
Mobilising Communities 6. <i>Involving Communities – development and establishment of local delivery for Mobilising Communities Small Grants.</i>	3 meetings held 11 projects supported	Total commitment to date: £37,225 Projects supported include: 6 x Youth Interventions 4 x Community Based Interventions 1 x Road Safety Intervention Further meeting to be held end of January
7. <i>Road Safety – Deliver the partnership off-road biking plan in profiled hotspots and emerging areas of concern. This is with a focus on repeat locations, repeat callers and communities, as well as</i>	Joint Patrols have been completed Intelligence sharing between agencies	Community and youth related leaflets have been printed and been delivered to hotspots and "risk" locations. Intelligence has been shared between agencies and joint patrols have taken place between WMP and WMFS. Partnership event has been held to

offenders		raise awareness amongst communities and an off ride bike was crushed as a demonstration. This is an ongoing project with data being shared between agencies on a regular basis.
8. <i>Road Safety – Develop a local community safety partnership plan and offer to supporting Birmingham's Bike Revolution and safer cycling – in current hotspots and areas where cycling may develop</i>	<p>Safer Cycling Partnership Event -October</p> <p>Cycle Training Supported by Involving Communities Funding</p>	<p>Safe passing distance prop being developed currently to highlight to drivers the safe passing distance of 1.5 metre. This will be used in accident hotspots and driver awareness events. This is currently awaiting design sign off cost is approximately £700</p> <p>A Partnership event to promote safer cycling amongst students took place in October involving WMP, WMFS and Birmingham University Guild of Students, this was widely advertised by South Birmingham Community Safety, Bournbrook Fire, Guild of Students and WMP twitter accounts.</p> <p>Involving Communities has funded a cycling project in relation to cycling confidence tuition and bike maintenance classes to promote safer cycling, the project runs from 1st Dec until 31st March.</p>
<p>Vulnerable People</p> <p>9. <i>Children & Families –</i></p>	Regular Partnership Meetings Taking place	<p>Meetings of the partnership are regularly taking place to share good practise and highlight changes in procedures, attendance at each meeting is approximately 25 – 30 individuals from various agencies. The next meeting is scheduled for 21st January, the agenda includes updates on Prevent Strategy and Neglect Strategy</p>
10. <i>Supporting Adults – Continue to develop local awareness and understanding of mental health and wellbeing issues, as well as the services available to refer and signpost to, through:</i> a. <i>Delivery of mental</i>	<p>Training Dates Now available.</p> <p>66 places for South Birmingham</p>	<p>MHFA Training is commenced in October and dates available run through to March 2016, where there was non-attendance this is being followed up with individuals and line managers. In addition awareness training in relation to Mental Capacity Assessments was commissioned and delivered by CCG, 2 sessions took</p>

WEST & CENTRAL QUADRANT

Priorities / Intervention/s	Outcome	Update
Vulnerable Adults; Domestic Violence Explore appointment of a DV worker on Fri/Sat nights	Ceased	The project won't move forward this year as needs to be part of a wider strategy. Funds are being reallocated.
Provide a regular Violence Against Women forum for networking, joint planning and sharing of information/ trends	Ongoing exchange of information and training for members. Possibility of joint projects.	Members consulted on the purpose of DV Forum; agreed as networking and training. Next planned for February with a training session around civil interventions.
Deliver LGBT DV training	Raising awareness and reporting mechanisms for LGBT DV	Training provided to frontline workers in Q3 by BLGBT.
Vulnerable Adults; Mental Health Hold information session for LDG partners to understand the scale and nature of Mental Health in addressing local community safety, identify and address gaps.	Increase partnership working and create improved outcomes for those affected by mental health issues	Safer Neighbourhoods Partnership Managers continue to meet with BSMHFT monthly. Joint Mental Health and Housing conference by SPNM and BSMHFT in November for strategic and local levels.
Engage Mental Health services in LDG	Increase p'ship w'king to create improved outcomes for mental health patients	BSMHFT now attend LCSP and link in to our wider group, e.g. HIM review, SGP Panel meeting, etc.
Front line training on Mental Health	Increase understanding and interventions around Mental Health	Front line workers trained in Mental Health, training commissioned centrally across the city. W&C plan to fund a further session locally (Q4) due to unprecedented demand.
Support the continued evolution of the City's Hoarding Strategy building on the work of W&C 15/16	Increase p'ship w'king and create improved outcomes for those affected by hoarding, including providers	Cost benefit analysis prepared (led by South Supporting Adults Panel) to be considered by BCSP Vulnerable People group. Q3 - Still awaiting outcome.
Vulnerable Youth; Youth Diversion Interactive Google Map of all youth	Enabling partners to tap into youth providers in local	We continue to map youth providers on W&C and now have over 100 listed under

providers on West & Central available to partners and more widely	areas. E.g. reduce youth-related ASB/crime	Wards. Q2 - Technical issues around WMP preparing a google map may have been resolved – tbc. Q3 update – we hope to have the goggle map operational by the end of February. SportBham have offered to generate this.
Map hotspots of youth related reported ASB for the last three years and summer periods	To provide a geographic evidence base for targeted interventions	Complete Q1. Analysis updated in Q3.
Share ASB hotspot information widely and review analysis based on local, current Intel	See above	Complete Q1. Analysis updated in Q3.
Summer Youth Diversion – outreach activities in key locations of youth related crime and ASB, linking to existing provision.	Reductions in youth related ASB and crime in ASB hotspot locations	Four youth providers commissioned to provide outreach over the summer and continued engagement through September. Q2 - £8000 now spent.
Evaluate summer youth outreach to ensure medium term engagement with existing youth provisions has been achieved beyond the summer	Reductions in youth related ASB and crime in ASB hotspot locations beyond the summer period	Q3 - Evaluation forms returned from all 4 youth providers showing positive outcomes and sustained engagement, especially in relation to new engagement with Somalian young people.
Explore linking youth outreach programme to training and employment opportunities	Reductions in youth related ASB, crime and NEETs	Contact been made with Economy Directorate and discussions have begun. Project to link in with our youth diversion post-summer. £50k multi-agency bid to Youth Promise Devolved Employment Fund – re Hidden and other NEETs. Bid unsuccessful to be resubmitted 2016/17.
Vulnerable Youth; Prevent Developing interventions around Prevent, particularly in the context of young people	PVE	We will initially ensure our four youth providers for the summer project (workers and volunteers) receive appropriate training.
Vulnerable Adults; Safer Communities Groups Develop, support and review	Reductions in ASB	Final two partnership sessions on the new ASB powers delivered in May.

interventions around the new ASB powers, embedding a wide partnership approach		Ongoing work via the SCG. Q3 update – little capacity on W&C currently for officers to move forward with new ASB actions.
Local Priorities; Neighbourhood Working Hold a multi-agency summit on Neighbourhood Working and review NTGs within this context	To agree and implement a local partnership approach around neighbourhood working within the context of neighbourhood policing and place management	Ongoing, delay due to changes in Police lead. To be rearranged but likely to be 2016/17 now.
Partnership interventions to take place in each of the Wards under “Place Management”	Improve community safety in its widest sense as part of Place Management	LCSP allocated approx. £1000 to each Ward. This has been largely spent on joint interventions around improving the environment; e.g. community clean ups, gating. Much has been led by Street Scene co-ordinator.
Pilot project on a small geographic area around environmental/housing issues as well as guns and gang related crime.	Increase safety and feelings of safety as well as the general environment and BCC Housing standards on St Georges Estate, Hockley. To develop best practice to implement elsewhere.	Intense piece of work started in November in response to community concerns around a shooting incident. Project due to conclude in Q4 with mainstreaming of some interventions. Aiming to evaluate and communicate the outcomes in Q4.
Local Priorities; Third Sector Engagement Continue to build on our partnership work with third sector organisations and increasingly involve them in the delivery of LCSP strategic objectives	To increasingly engage the third sector in developing and delivery LCSP interventions, as an alternative to the public sector	Two of the four youth providers commissioned by our youth outreach project are third sector organisations. Ongoing. Links with community sector have been strengthened through the Small Grants Pot process.
Local Priorities; Third Sector Engagement/Neighbourhood Working Promote to and support community groups to apply for Small Grants Pot monies	Mobilise communities to take their own action for improvements	35 groups applied, 11 granted funding totalling £33.6k on 14 th October. Further meeting planned 18 th Jan to allocate up to £21.4k.

Deliver Social Media courses	Increase connectivity & promote safety via using social media	Planned for Q4
Vulnerable Youth Review the three HIMs (Hub Integration Meetings for Child Safeguarding Partnerships) on West & Central	All relevant partners engaged, improved communications and partnership working. Outcomes tbc after away day.	M/agency away day 13 Nov. Q3 update – Meeting put on hold pending recommendations of central Localities meeting, possibly for generic city-wide approach.
Vulnerable Adults / Youth Review and influence the commissioned delivery of substance misuse services on West & Central	Improved partnership working and communications. Locally targeted delivery. Reductions in substance misuse.	Task and Finish Group to met 19 Oct. Q3 – A number of key actions generated at and progressed following the meeting. Future progress linked to the District Health Theme Groups.
Vulnerable Adults; Mental Health Delivering BCSP funded training to partners on W&C (citywide)	Improved understanding and interventions around m health.	Participants currently booking on training dates Nov – Jan. Q3 update – training delivered

Branding and Publicity

Campaign materials used in the LGBT DV campaign. BCSP logo provided to Small Grants Pot groups. Regular reports to Ladywood District Committee which is attended by the deputy PCC. We are now actively considering where it is appropriate to invite the PCC to events.

Report ends\