

# Birmingham Health & Wellbeing Board COVID-19 Update

17/05/2022



**A BOLDER  
HEALTHIER  
BIRMINGHAM**



**Birmingham**  
City Council

# Data Position

## Cases: 28 days, 4 April to 1 May 2022

- The case rate in the most recent 28 days was **631.6 cases/100k** population, **a decrease of 60%** compared to previous 28 days (1,583.5/100k).
  - The 7-day case rate has **decreased by 35%**, from 121.0/100k (18-24 April) to 78.2/100k (25 April-1 May)
- 943.1/100k case rate in 60+ age group
- 565.9/100k case rate in 0-59 age group
- The 80+ age group had the highest case rate this month (1,035.5/100k)

## Pillar 2 Testing: 28 days up to 30 April

- **654 PCR** tests/100k in last 28 days
- **11.2%** of PCR tests were positive (previous 28 days: 28.8%)
- **9,363 LFD** tests/100k in last 28 days
- **8.6%** of LFD tests were positive (previous 28 days: 9.1%)
- There has been a recent decrease in data confidence due to the fall in testing (following the end of universal free testing) and the discontinuation of waste water analysis. Cases reported here are those positively identified in the city via a PCR or LFD test.

## Vaccination: aged 12+ (extracted 4 May)

- **68.3%** 1<sup>st</sup> Dose
- **63.4%** 2<sup>nd</sup> Dose
- **42.6%** booster dose
  - 82.7% over-65s
  - 84.3% over-80s
- 290,540 aged under 50 are unvaccinated
- 51,979 aged 50+ are unvaccinated
- 61,347 clinically at risk (all ages) are unvaccinated

## Deaths: 28 days

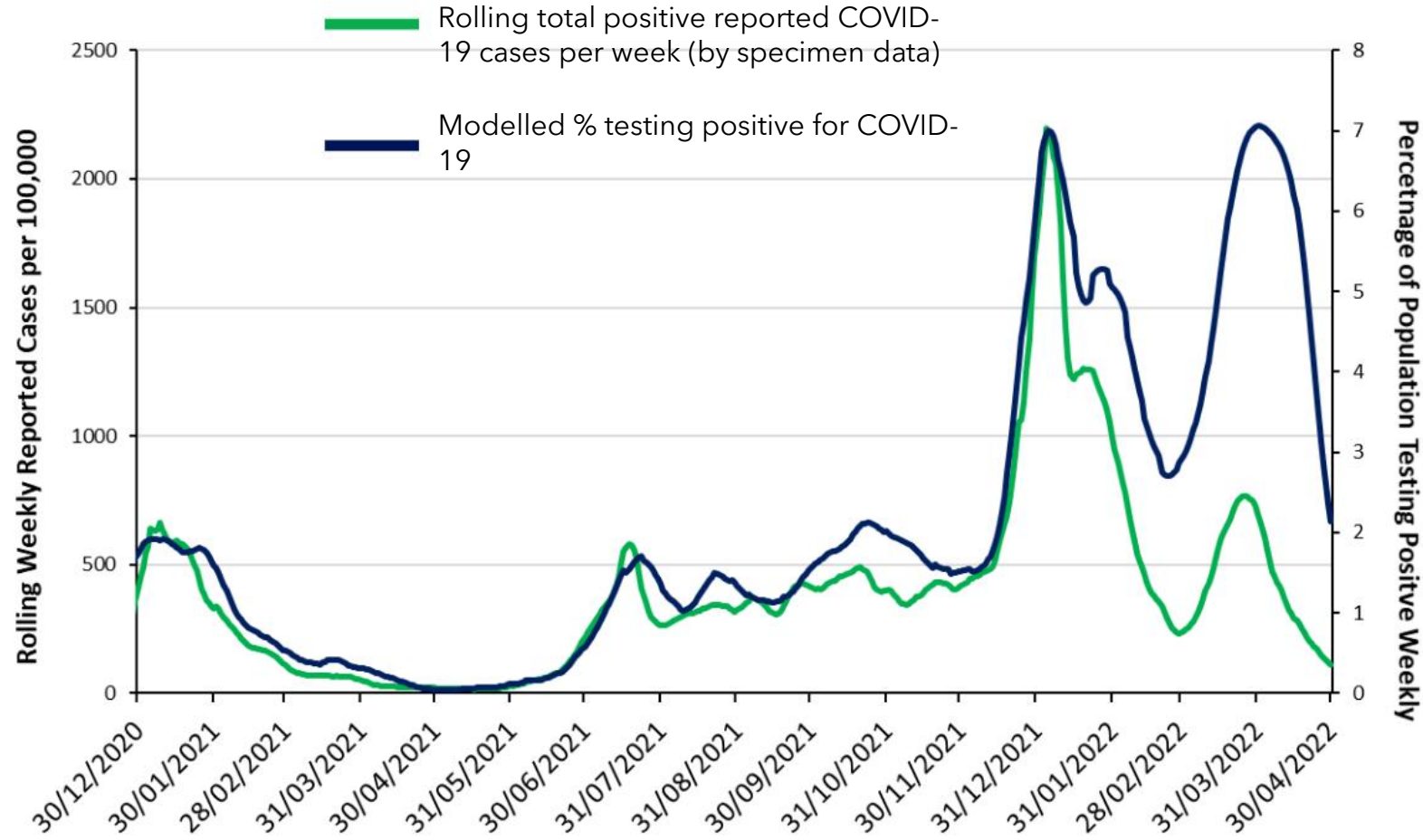
- **60 deaths** within 28 days of a positive COVID-19 test (28 days to 3 May).
- **34 deaths** with COVID-19 on death certificate (28 days to 22 April).

Sources: UK Health Security Agency; National Immunisation Management System; NHS Test & Trace Secure Reporting Environment; NHS NIMS; GOV.UK



# ONS COVID-19 Infection Survey 6 May 2022

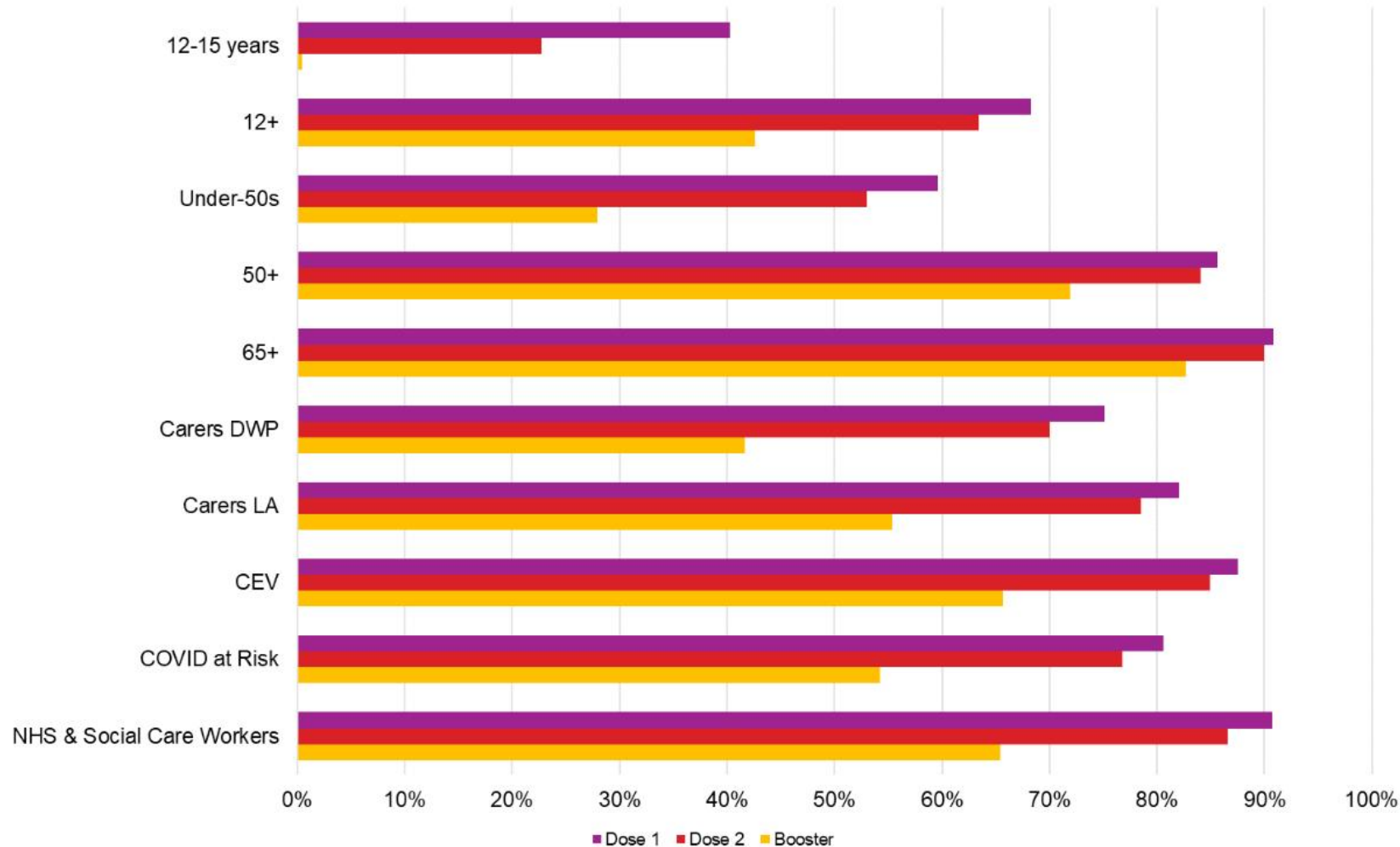
## West Midlands ONS Modelled Weekly Positivity Percentage and Rolling Weekly Reported Case Rate per 100,000



- The latest published ONS Infection Survey shows modelled cases in the West Midlands to have peaked in early April and to be declining since then. This trend is reflected in the reported cases in the West Midlands.
- Up until the end of 2021, we have seen a strong correlation between ONS measured COVID-19 prevalence (*blue line*) and reported cases (*green line*). However, from mid-January 2022 this **correlation has been broken**, coinciding with reduction in community testing and restrictions. This suggests that **COVID-19 cases could be far higher than those reported**.
- ONS estimates predict that in the week ending 23 April up to 50,183 cases could have occurred in **Birmingham**, compared to the 1,385 cases that were reported (*most up to date sub-regional estimate*).

# Uptake in Birmingham Residents -1<sup>st</sup>, 2<sup>nd</sup> and Booster Doses

Vaccine 1st, 2nd and Booster % Uptake among Birmingham Residents



- Uptake of 1<sup>st</sup>, 2<sup>nd</sup> and booster doses remain consistently lower amongst under-50s compared to over-50s.
- Identified vulnerable groups including over-65s, clinically extremely vulnerable and COVID at-risk cohorts show good uptake of 1<sup>st</sup> and 2<sup>nd</sup> doses, with booster uptake between 50% and 65%.
- Booster uptake in NHS and social care workers is lower compared to the uptake of 1<sup>st</sup> and 2<sup>nd</sup> doses.

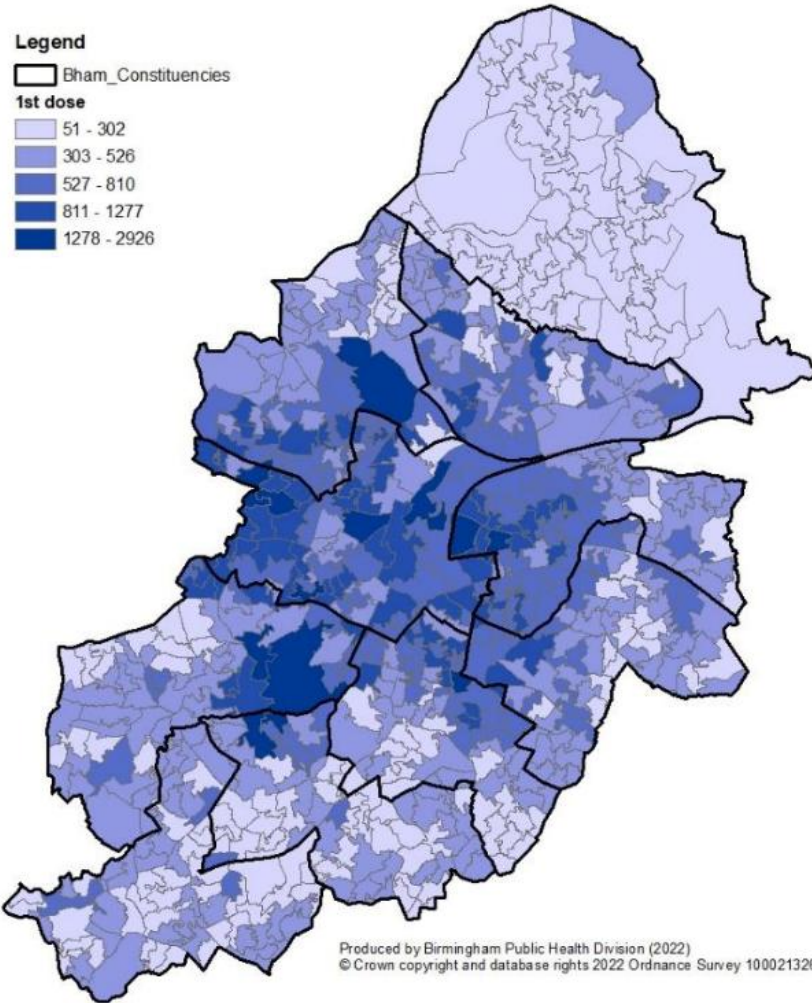
- CEV - clinically extremely vulnerable group at risk of severe illness from COVID-19
- Carers LA/DWP - Carers under local authority or Department for Work and Pensions jurisdiction

Source: NHS NIMS Extracted 04/05/2022

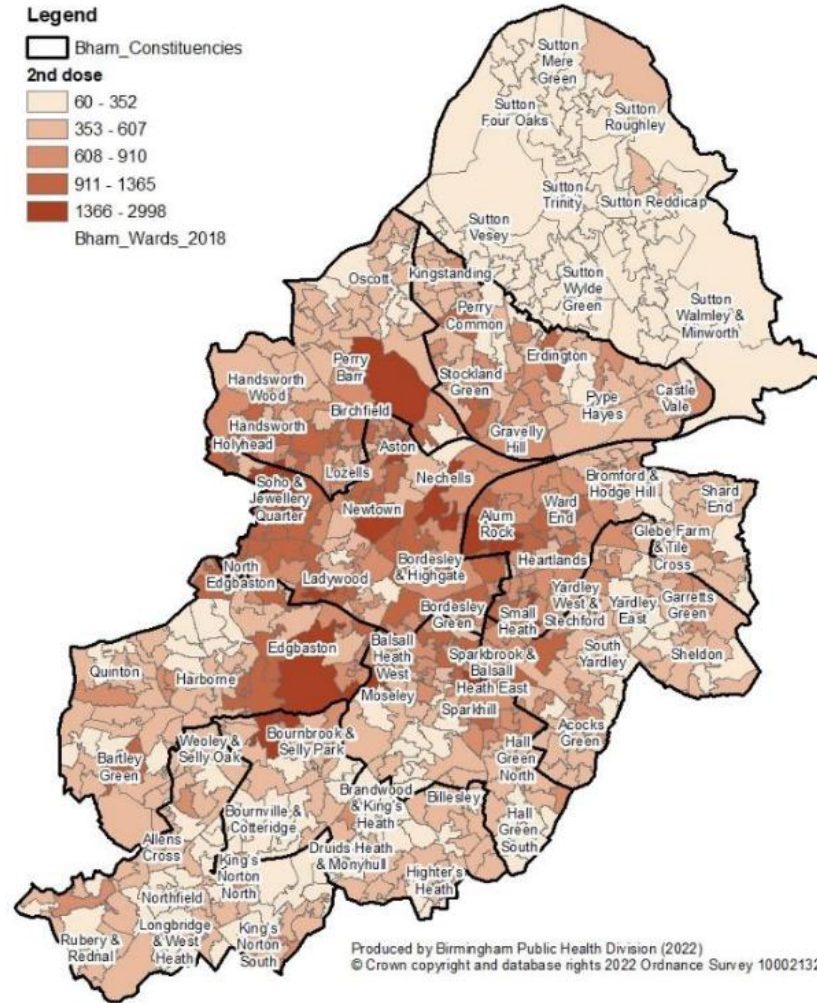
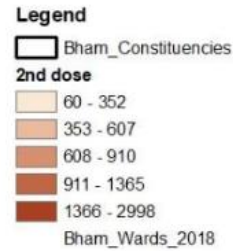


# Numbers of unvaccinated by LSOA, 1<sup>st</sup>, 2<sup>nd</sup> and booster doses

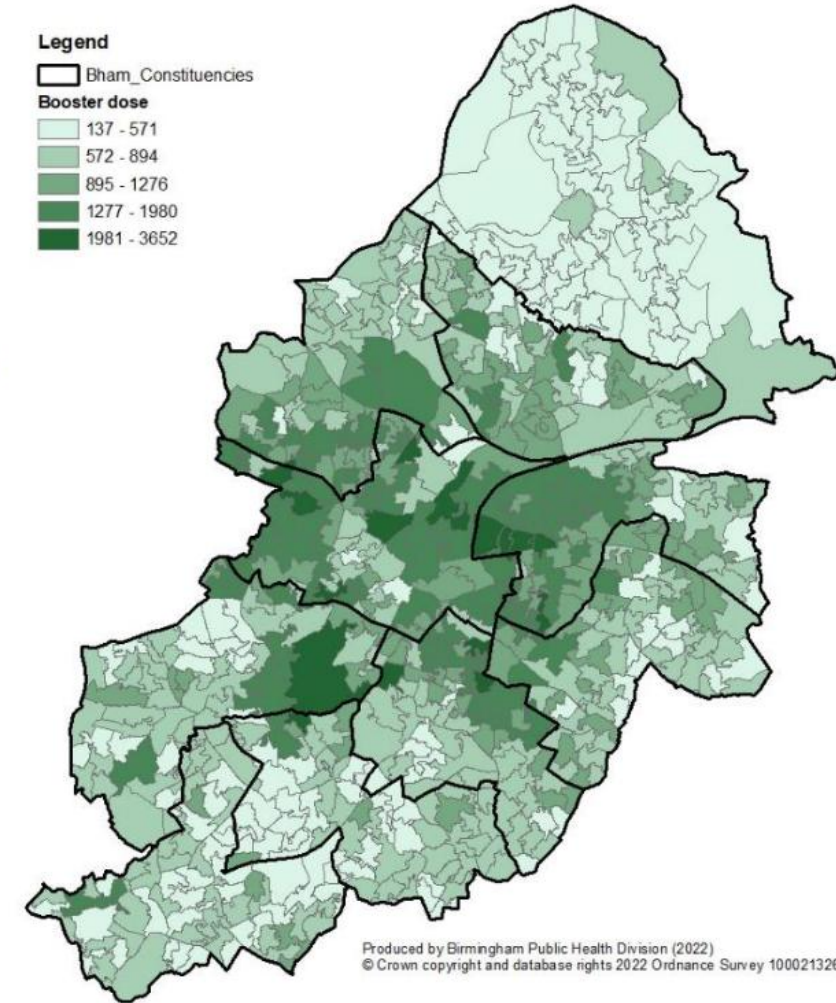
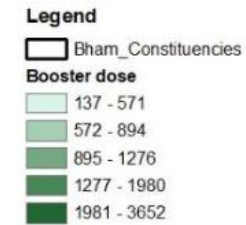
1st dose



2nd dose



Booster dose



The largest concentration of unvaccinated individuals appear to be concentrated in the Edgbaston area, which has a large student population.

- The 18-29 years age group in this LSOA area of Edgbaston account for 64% of the estimated eligible resident population, compared to 21% in Birmingham
- This LSOA area has the largest eligible population (7.5k) for vaccination in Birmingham. Within this population, around 50% are fully vaccinated, and a 38% have had their boosters, with gradual growth being seen.
- However, according to two surveys undertaken by the University of Birmingham, around 95% of students said they have been fully vaccinated.
- The 10 LSOAs with the largest numbers of unvaccinated are in six wards: **Edgbaston, Bournbrook & Selly Park, Soho & Jewellery Quarter, Newtown, Alum Rock** and **Perry Barr**

# Birmingham Health & Wellbeing Board Commonwealth Games Public Health Update

17/05/2022



**A BOLDER  
HEALTHIER  
BIRMINGHAM**



**Birmingham**  
City Council



# Public Health Commonwealth Games Projects Update

- **Healthy Eating**
  - Cook the Commonwealth campaign launches in June
  - Food & Music Celebrations:
    - Ghana – 3<sup>rd</sup> June @Nechelles Pod
    - Trinidad and Tobago – 17<sup>th</sup> July, Simmerdown festival in Handsworth Park
    - Nigeria – 23<sup>rd</sup> July, Birchfield Jazz Festival at St Mary's Church
    - Further events to come covering Jamaica, India, Pakistan, Bangladesh, Kenya, Sri Lanka
- **Physical Activity**
  - Working with WMLegacy to bring daily mile activation to ten parks across Birmingham
  - Tola Time refresh launch in July focusing on active travel and road safety
  - Tender has been awarded to develop culturally competent resources on physical activity in Punjabi, Urdu, Bengali, Farsi to be launched in Summer
  - Health and sports posters in final draft stage
  - First cohort of healthcare professionals have completed physical activity training
- **Health Literacy**



# Birmingham Health & Wellbeing Board BLACHIR Update

17/05/2022



**A BOLDER  
HEALTHIER  
BIRMINGHAM**



**Birmingham**  
City Council



# Next Steps

- Public launch of fully designed and accessible report and data in two launch events in the two localities – **Birmingham (9 June 2022)** and Lewisham (7 June 2022).
- Further community health profiles to be published by the summer focused on Kenya, Somalia, Nigeria and Caribbean island heritage communities.
- Some pilot work already happening in relation to the recommendations including culturally tailored interventions on bereavement support, suicide prevention, weight management, healthy eating and physical activity for African and Caribbean communities.
- Implementation to be overseen through a sub-group of Health and Wellbeing Board Creating a City Without Inequality Forum working with commissioned engagement partners.
- Currently commissioning engagement partners to work with our Black African, Black Caribbean communities and two specific partners to work with young black men and young black women. These opportunities can be found on the FinditinBirmingham tender portal.

